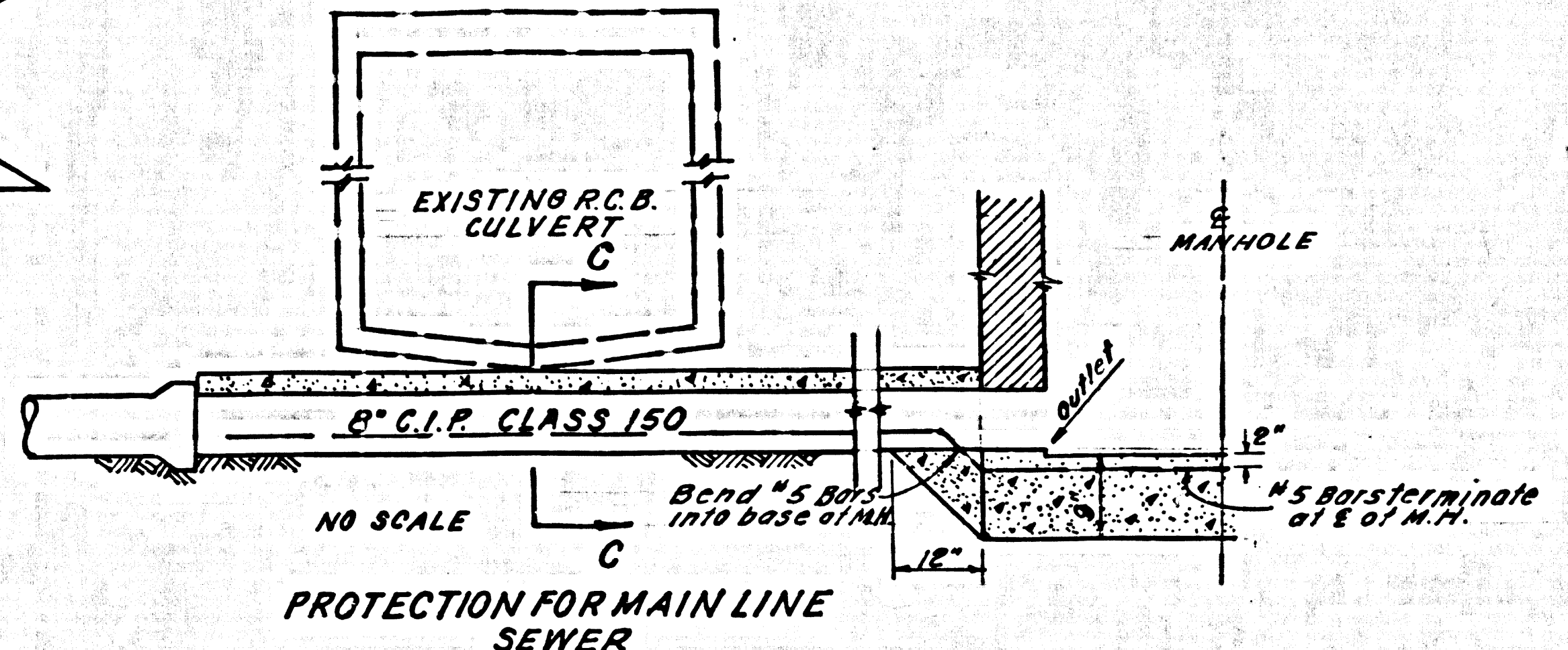
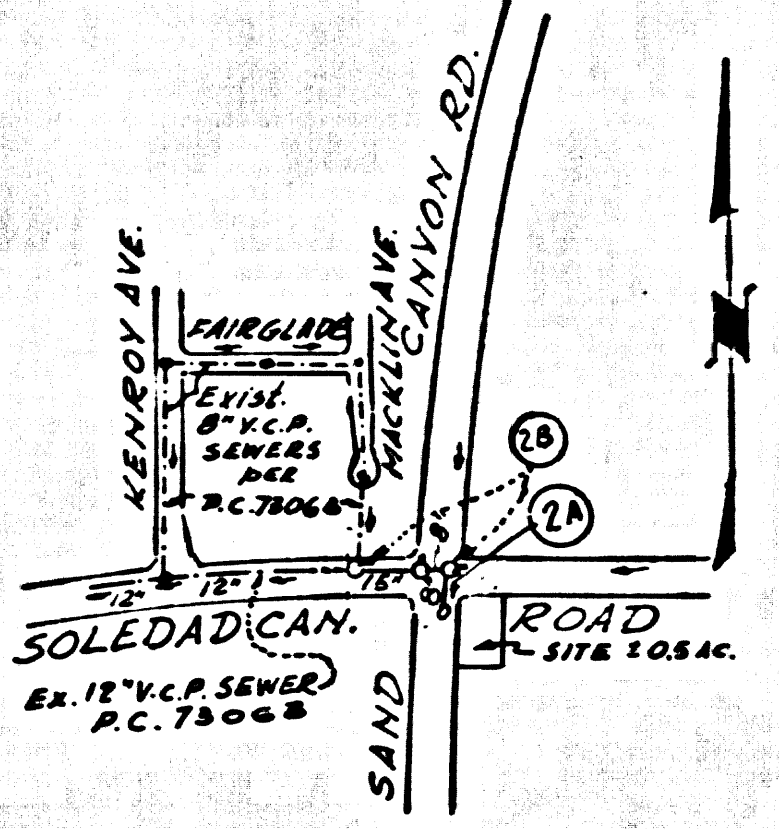


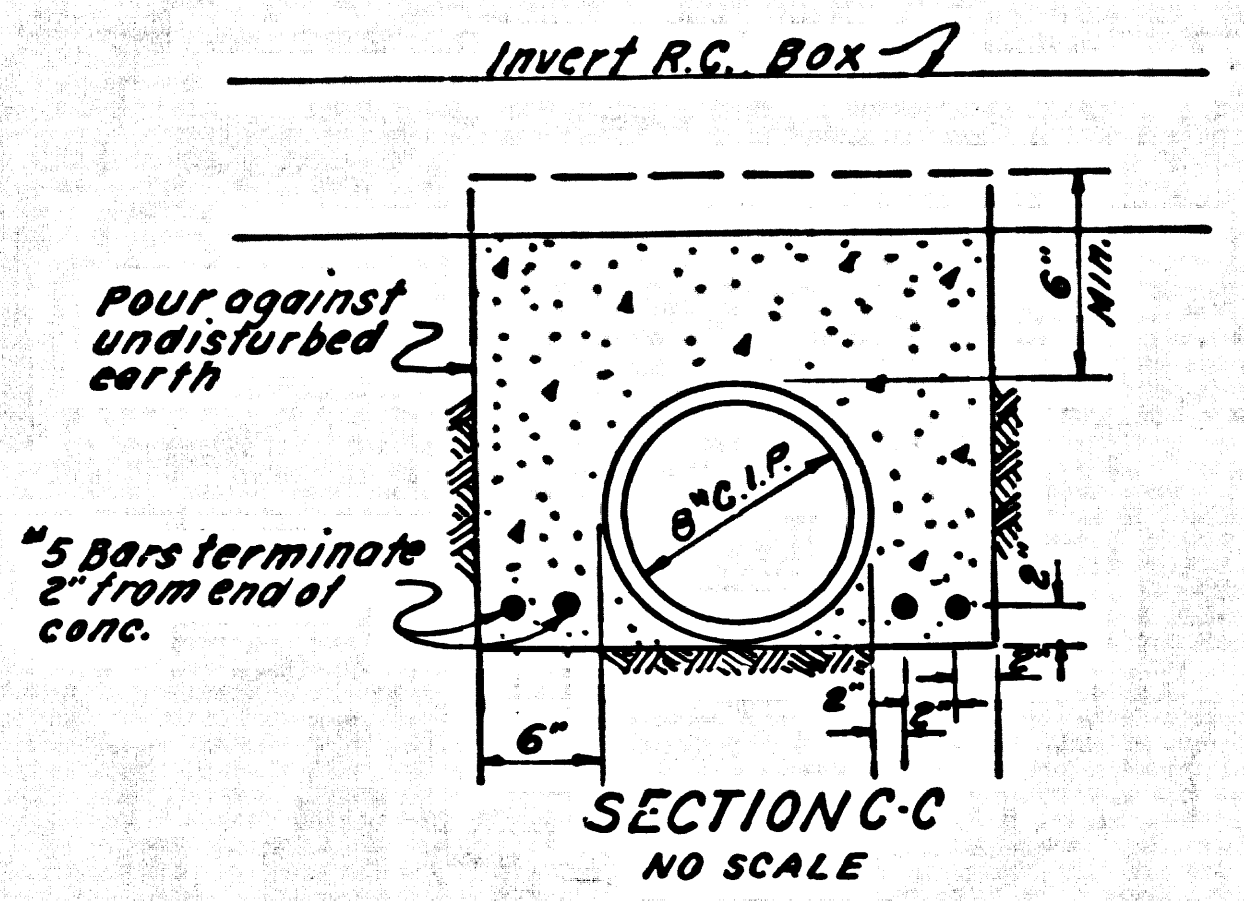
B.M. 2943 ELEV. 1580.424
 R.D.M. TAG AT SOUTHWEST CORNER
 SAND CANYON RD. & SOLEDAD
 CANYON RD. - 3 1/2 B.C. & 1/2 S. &
 40' N/O E INTERSECTION
 NEWHALL QUAD. 19.65



PROTECTION FOR MAIN LINE SEWER



INDEX MAP
 SCALE: 1"=600'
 P.C. 8115



SECTION C-C
 NO SCALE

County Sanitation Districts shall be notified prior to the following as they required inspection may be made (Phone 837-1023 or 440-0097)

Acceptance of the project.

No connections for the disposal of industrial wastes shall be made as shown on these drawings without written permission from the Chief Engineer and General Manager of the County Sanitation Districts.

THE FOLLOWING COUNTY ENGINEER STANDARD PLANS APPLY TO THIS PROJECT:

LEGEND

- MINIMUM PUBLIC SAFETY REQUIREMENTS 5-1
- BRICK MANHOLE 5-2
- REINFORCED PRECAST CONC. MANHOLE 5-3
- MANHOLE FRAME AND COVER 5-4
- MANHOLE STEP 5-17
- BEDDING FOR SEWER PIPE 5-21
- ALLOWABLE TRENCH WIDTH 5-25
- CRADLING & ENCASUREMENT 5-26
- 5 BARS TO SURFACE 5-27
- NON-REINFORCED PRECAST CONC. MANHOLE 5-28

DOUBLE SCALE
 NEWHALL BLDG. DIST. NO. 82

PROFILE, ALIGNMENT AND GRADE OF P.C. 8115
 SANITARY SEWERS PAGE 1

TO BE CONSTRUCTED IN
 SOLEDAD CANYON ROAD
 AND
 SAND CANYON ROAD
 PRIVATE CONTRACT NO. 8115

W.S. 62-D-2

1 SHEET 2 PAGES

41255

SCALE: VERT. 1"=8'

HORIZ. 1"=40'

MAY, 1960

PREPARED IN THE OFFICE OF
 VOORHEIS-TRINDLE CO.

5919 VAN NUYS BLVD., VAN NUYS, CALIFORNIA.

By Michael F. Madden

REG. C. E. NO. 16744

FOR LEGEND SEE PLAN NO. S-1

1. PROVIDE STAKES ON THE PROPERTY LINE OR PROPERTY LINES PRODUCED AT RIGHT ANGLES TO THE SEWER LINE AT THE CENTER LINE OF EACH MANHOLE.
2. NO REPRESENTATIVE OF THE COUNTY ENGINEER WILL SURVEY OR LAY OUT ANY PORTION OF THE WORK.
3. THE PRIVATE ENGINEER SHALL FURNISH THE COUNTY ENGINEER WITH GRADE SHEETS AND STATIONING FOR ALL HOUSE LATERALS AND "T" BRANCHES AS WELL AS STATIONING FOR ALL MAIN LINE SEWERS. ALL HOUSE LATERALS SHALL BE CONSTRUCTED IN A STRAIGHT ALIGNMENT AT RIGHT ANGLES FROM THE MAIN LINE SEWER EXCEPT AS SHOWN ON THE PLANS. HOUSE LATERALS FROM CHIMNEYS SHALL NOT HAVE AN ANGLE OF LESS THAN 45° WITH THE MAIN LINE SEWER. ANY CHANGE IN ALIGNMENT SHALL BE REQUESTED IN WRITING BY THE PRIVATE ENGINEER.
4. THE PRIVATE ENGINEER SHALL FURNISH THE HOUSE LATERAL DEPTH AT THE PROPERTY LINE BELOW THE TOP OF CURB ELEVATION FOR EACH HOUSE LATERAL ON THE GRADE SHEET.
5. NO REVISIONS SHALL BE MADE IN THESE PLANS WITHOUT THE APPROVAL OF THE COUNTY ENGINEER.
6. THE CONTRACTOR SHALL NOTIFY THE CONSTRUCTION DIVISION BY TELEPHONE, MADISON 9-87, EXT. 8158, AT LEAST TWENTY-FOUR HOURS BEFORE STARTING ANY WORK UNDER THIS CONTRACT.
7. ALL STRUCTURES SHALL BE BRICK, MANHOLES PER S-3 OR PRECAST CONCRETE MANHOLES PER S-4. ALL SHALL BE USED UNLESS OTHERWISE APPROVED BY THE COUNTY ENGINEER.
8. "T" BRANCHES MAY BE USED FOR CONNECTIONS TO MAINLINE SEWER EXCEPT AS NOTED.
9. MANHOLE TOPS IN UNIMPROVED RIGHTS-OF-WAY TO BE SIX INCHES ABOVE FINISHED GRADE.
10. USE EXTRA STRENGTH V.C.P. PIPE, EXCEPT AS NOTED.
11. VITRIFIED CLAY PIPE JOINTS SHALL BE TYPE "D", "F" OR "G" PER STD. SEC. 208-2.
12. IF A POWER POLE IS WITHIN THREE FEET OF THE SEWER, THE SEWER SHALL BE ENCASED, PER S-25, TWO FEET ON EACH SIDE FROM THE POINT OF INTERFERENCE.
13. IF DURING THE COURSE OF CONSTRUCTION IT IS DETERMINED THAT THERE IS LESS THAN FOUR FEET OF COVER OVER THE TOP OF A MAIN LINE OR HOUSE LATERAL V.C.P. SEWER WHICH IS NOT INDICATED ON THE PLANS, THE PIPE SHALL BE ENCASED PER S-25, UNLESS OTHERWISE APPROVED BY THE COUNTY ENGINEER.
14. HOUSE LATERALS TO BE CONSTRUCTED WITH INVERTS AT PROPERTY LINE & FIVE FEET BELOW CURB GRADE EXCEPT AS NOTED.
15. RESURFACE ALL TRENCHES WITHIN PAVED AREAS TO MEET L.A. COUNTY ROAD DEPT. OR CALIFORNIA STATE HIGHWAY REQUIREMENTS IN ACCORDANCE WITH PERMITS.
16. SEWERS TO BE TESTED FOR LEAKAGE PER SEC. 206-2.3.7. OF STD. SPECS.
17. REFER TO SECTION 7-10.4.1 OF THE STD. SPECS. REGARDING SAFETY ORDERS.

18 SEWER PIPE BEDDING SHALL CONFORM TO S-21.
 19 ALL JOINTS BETWEEN CAST IRON PIPE AND VITRIFIED CLAY PIPE SHALL BE MADE WITH THE SQUARE SLEEVE JOINT TYPE "C" OR "D" (WITH BUSHING IF NECESSARY), PER STD. SPECS. SECTION 208-2.

NOTICE TO CONTRACTOR

The existence and location of any underground utility pipes or structures shown on these plans are obtained by a search of the available records. To the best of my knowledge there are no existing utilities except as shown on these plans. The contractor is required to take due precautionary measures to protect the utility lines shown and any other lines not of record or not shown on these plans.

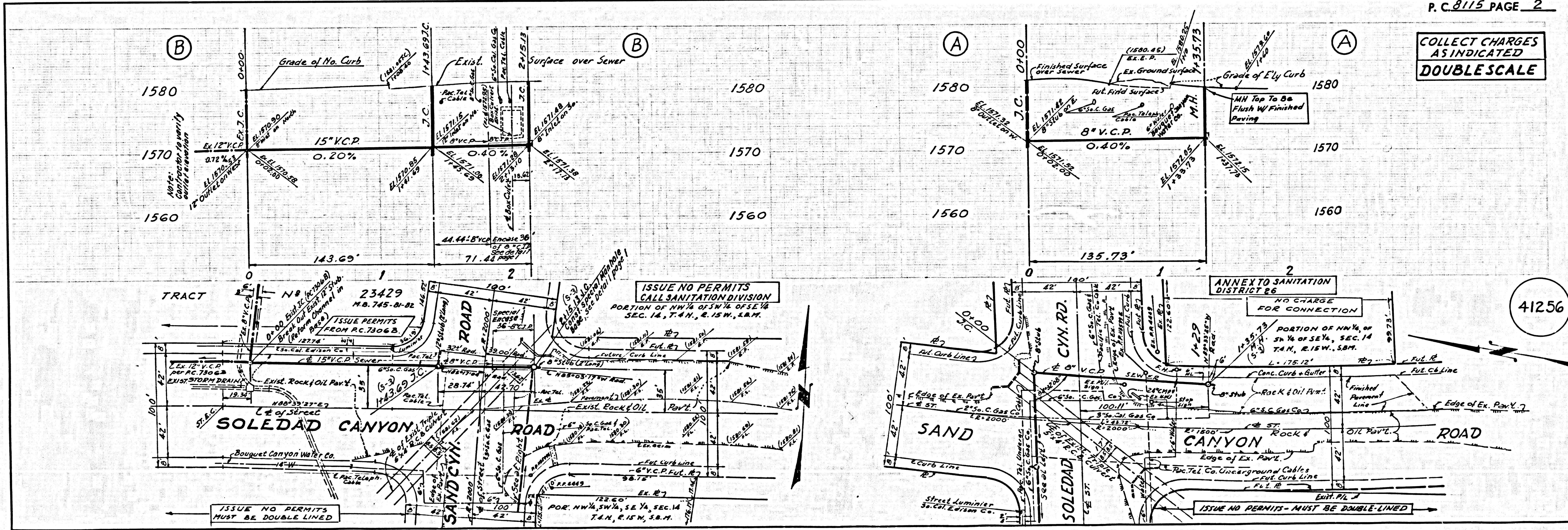
Michael F. Madden
 R.C.E. 16744

COLLECT CHARGES AS INDICATED

COUNTY OF LOS ANGELES, CALIFORNIA
 JOHN A. LAMBE, COUNTY ENGINEER
 J. D. PARKHURST, CHIEF ENGINEER
 CO. SAN. DIST. NO. 26
 APPROVED BY: [Signature]
 OFFICE ENGINEER

APPROVED BY: [Signature]
 REGIONAL ENGINEER
 CHECKED BY: Ralph Schaller 6/23/64
 REG. CAL. NO. 13486

J.N. 0369.28



P.C. 8115 PAGE 2

COLLECT CHARGES AS INDICATED
 DOUBLESCALE

41256