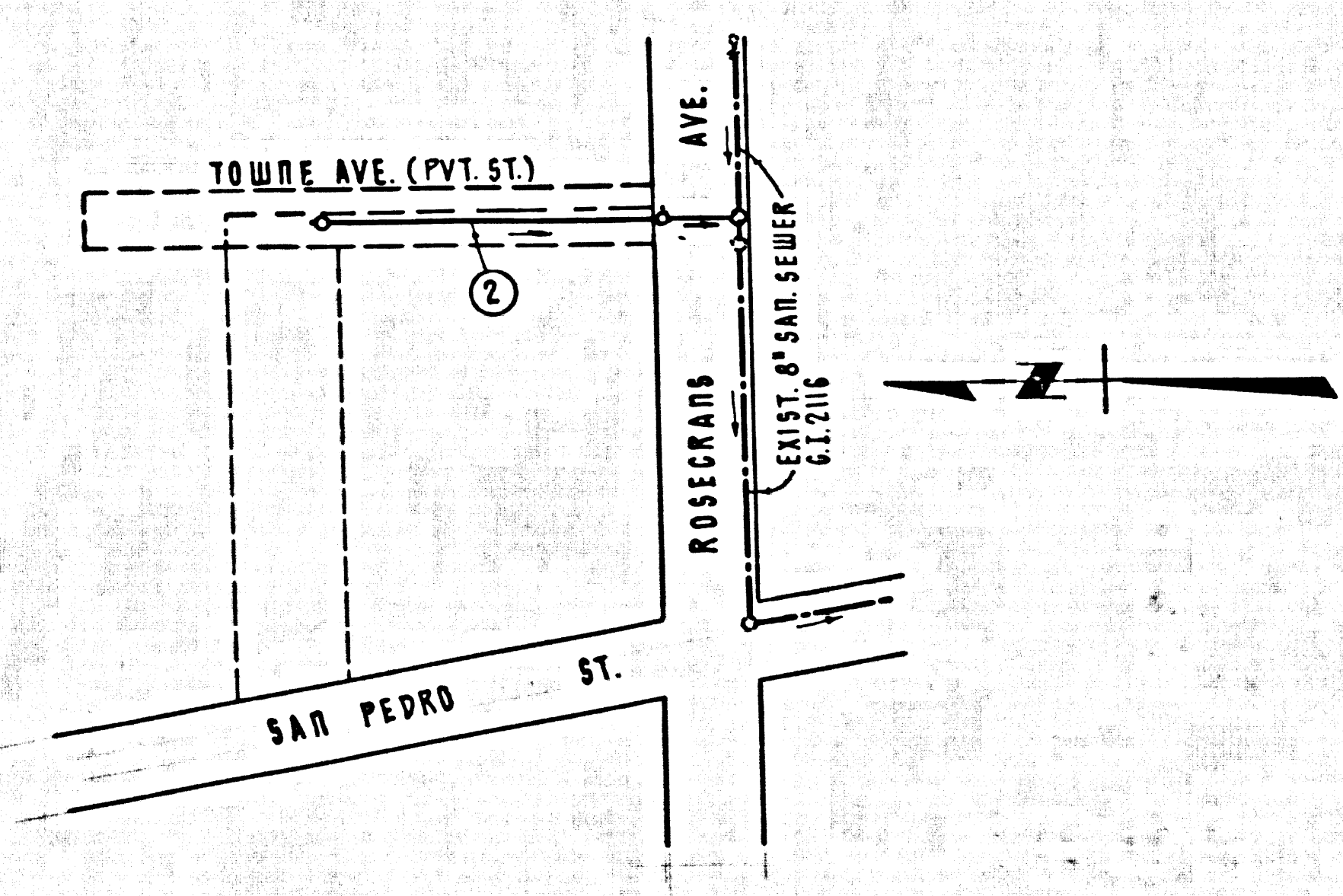


B.M. 21-4A ELEV. HS. 470, F.S. 1931-9A
 ROSECRANS AVE & AVAARD BLVD. 166.5' W/O A INTERSECTION
 6.415' W OF A OF AVAARD BLVD. IN A WELL PROTECTED
 BY A CAST IRON COVER MARKED "C.E. 1001"
 C.E. MARK STAMPED "D.M. 21-4A 1960 R.E. 5869"
 SET IN CONC. 10" BELOW TOP OF CURB.
 QUAD. 1965



INDEX MAP
 SCALE: 1" = 200'
 P.C. 8119

REVISION:
 CONSTRUCTED J.C. AROUND EXIST. 8" SEWER
 AND REALIGNED CROSSING OF ROSECRANS
 AVENUE
 APPROVED: *Bernard J. Walsh*
 RLE 10653 DATE 6-8-69

NO CONNECTIONS FOR THE DISPOSAL OF
 INDUSTRIAL WASTES SHALL BE MADE TO
 SEWERS SHOWN ON THESE DRAWINGS
 WITHOUT WRITTEN PERMISSION FROM THE
 CHIEF ENGINEER AND GENERAL MANAGER
 OF THE COUNTY SANITATION DISTRICTS.

- Sanitary Sanitation Districts shall be notified prior to the following so that required inspection can be made (Phone NE 630977)
- (X) Commencement of construction of manhole on trunk sewer.
 - (X) Breaking into existing manhole on District trunk sewer.
 - (X) Commencing District trunk sewer.
 - (X) Construction of house connections to District trunk sewer.
 - (X) Acceptance of the project.

LENNOX BLDG. DIST. NO. 7

- NOTES:
1. PROVIDE STAKES ON THE PROPERTY LINE OR PROPERTY LINES PRODUCED AT RIGHT ANGLES TO THE SEWER LINE AT THE CENTER LINE OF EACH MANHOLE.
 2. NO REPRESENTATIVE OF THE COUNTY ENGINEER WILL SURVEY OR LAY OUT ANY PORTION OF THE WORK.
 3. THE PRIVATE ENGINEER SHALL FURNISH THE COUNTY ENGINEER WITH GRADE SHEETS AND STATIONING FOR ALL HOUSE LATERALS AND "T" BRANCHES AND SHALL PROVIDE STAKES FOR THEM AT THEIR PROPER LOCATIONS WITH STATIONING PLAINLY MARKED.
 4. ALL HOUSE LATERALS SHALL BE CONSTRUCTED IN A STRAIGHT ALIGNMENT AT RIGHT ANGLES FROM THE MAIN LINE SEWER EXCEPT AS SHOWN ON THE PLANS. HOUSE LATERALS FROM CHIMNEYS SHALL NOT HAVE AN ANGLE OF LESS THAN 45° WITH THE MAIN LINE SEWER. ANY CHANGE IN ALIGNMENT SHALL BE REQUESTED IN WRITING BY THE PRIVATE ENGINEER.
 5. THE PRIVATE ENGINEER SHALL FURNISH THE HOUSE LATERAL DEPTH AT THE PROPERTY LINE BELOW THE TOP OF CURB ELEVATION FOR EACH HOUSE LATERAL ON THE GRADE SHEET.
 6. NO REVISIONS SHALL BE MADE IN THESE PLANS WITHOUT THE APPROVAL OF THE COUNTY ENGINEER.
 7. THE CONTRACTOR SHALL NOTIFY THE CONSTRUCTION DIVISION BY TELEPHONE, HARBOR 9-474, EXT. 8151, AT LEAST TWENTY-FOUR HOURS BEFORE STARTING ANY WORK UNDER THIS CONTRACT.
 8. ALL STRUCTURES SHALL BE EITHER BRICK MANHOLES PER 6-3 OR PRECAST CONCRETE MANHOLES PER 6-5 OR 6-6, EXCEPT AS NOTED.
 9. USE STANDARD MANHOLE FRAMES AND COVERS, S.I.E. EXCEPT AS NOTED.
 10. MANHOLE TOPS IN UNIMPROVED RIGHTS-OF-WAY TO BE SIX INCHES ABOVE FINISHED GRADE.
 11. USE EXTRA STRENGTH PIPE. ALL PIPE IS STANDARD DEPTH EXCEPT AS NOTED.
 12. VITRIFIED CLAY PIPE JOINTS SHALL BE TYPE "D", "P", OR "G" PER STD. SPEC. SEC. 206-2.
 13. IF A POWER POLE IS WITHIN THREE FEET OF THE SEWER, THE SEWER SHALL BE ENCASED, PER 6-23, TWO FEET ON EACH SIDE FROM THE POINT OF INTERFERENCE.
 14. IF DURING THE COURSE OF CONSTRUCTION IT IS DETERMINED THAT THERE IS LESS THAN FOUR FEET OF COVER OVER THE TOP OF A MAIN LINE OR HOUSE LATERAL V.C.P. SEWER WHICH IS NOT INDICATED ON THE PLANS, THE PIPE SHALL BE ENCASED PER 6-23, UNLESS OTHERWISE APPROVED BY THE COUNTY ENGINEER.
 15. HOUSE LATERALS TO BE CONSTRUCTED WITH INVERTS AT 8 1/2" UNLESS OTHERWISE NOTED.
 16. RESURFACE ALL TRENCHES WITHIN PAVED AREAS TO MEET L.A. COUNTY ROAD DEPT. OR CALIFORNIA STATE HIGHWAY REQUIREMENTS IN ACCORDANCE WITH PERMITS.
 17. SEWERS TO BE TESTED FOR LEAKAGE PER SECTION 306-2.8.7. STANDARD SPECIFICATIONS.
 18. REFER TO SECTION 7-10-4.1 OF THE STANDARD SPECIFICATIONS, REGARDING SAFETY CIRCLES.

THE FOLLOWING COUNTY ENGINEER STANDARD PLANS APPLY TO THIS PROJECT.

LEGEND	5-1
MINIMUM EXCAVATION SAFETY REQUIREMENTS	5-1
BRICK MANHOLE	5-3
PRECAST CONCRETE MANHOLE	5-3
REINFORCED PRECAST CONCRETE MANHOLE	5-3
MANHOLE FRAME AND COVER	5-15
MANHOLE SIDING	5-17
RECORDING FOR SEWER PIPE	5-21
CRACKING AND ENCASING	5-23
WAYS ON THE SUPPORT	5-25
ILLUMINABLE TRENCH WIDTHS	5-28

COLLECT CHARGES AS INDICATED

ISSUE NO HOUSE CONNECTION PERMITS UNTIL RIGHT OF WAY IS RECORDED

PROFILE, ALIGNMENT AND GRADE OF P.C. 8119
 SANITARY SEWERS PAGE 1
 TO BE CONSTRUCTED IN
 TOWNE AVENUE (PVT. STREET)

PRIVATE CONTRACT NO. 8119

W.S. 26
 1 SHEET OF 2 PAGES
 SCALE: VERT. 1" = 4' HORIZ. 1" = 40'
 JUNE, 1968
 PREPARED IN THE OFFICES OF
 L.M. KERENDAHM & ASSOC. INC.
 7456 BEVERLY BLVD., L.A. CALIF. 90036
 REG. C.E. NO. 5856

40398

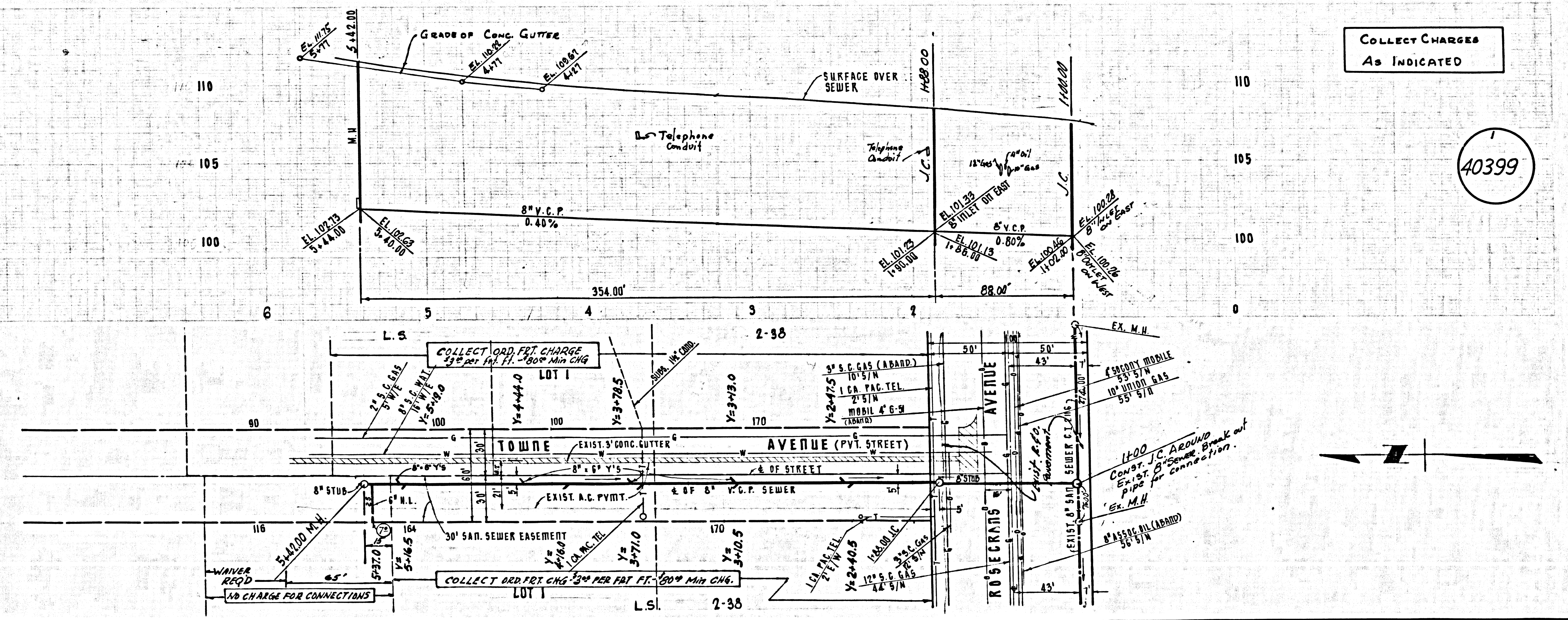
FOR LEGEND SEE PLAN NO. S-1
 THE PUBLIC WORKS CONSTRUCTION AND COUNTY ENGINEER SPECIAL PROVISIONS DATED FEB. 15, 1965, AS REQUIRED.
 GRADES TO WHICH THIS IMPROVEMENT IS TO BE CONSTRUCTED ARE SHOWN ON PLANS AND PROFILES. GRADE POINTS FOR TOP OF CURB, CENTER LINE OF STREETS, OR CENTER LINE OF ALLEYS ARE SHOWN BY CIRCLES ON PROFILES. AT ALL POINTS BETWEEN DESIGNATED POINTS THE GRADE SHALL BE ESTABLISHED SO AS TO CONFORM TO A STRAIGHT LINE DRAWN BETWEEN SAID DESIGNATED POINTS. ELEVATIONS ARE IN FEET ABOVE U.S.C. & G.S. MEAN SEA LEVEL DATUM OF 1929.
 THIS DRAWING AND THE DATA HEREON ARE HEREBY MADE A PART OF THE SPECIFICATIONS.
 WORK SHALL BE CONSTRUCTED ACCORDING TO STANDARD SPECIFICATIONS DATED 1965.
 BEFORE WORK CAN BE STARTED, THE CONTRACTOR MUST OBTAIN A PERMIT TO EXCAVATE IN COUNTY STREETS FROM THE L.A. COUNTY ROAD DEPT., DISTRICT OFFICE NO. 10, AND PAY A FEE TO THE COUNTY ENGINEER, ROOM 300, COUNTY ENGINEERING BUILDING, THE WEST SECOND STREET CORNER CALIFORNIA STATE HIGHWAY 101, LOS ANGELES, CALIFORNIA. REGIONAL OFFICE, EQUIPMENT TO COVER THE COST OF CONSTRUCTION INSPECTION AND RECORD PLANS.
 APPROVAL OF THIS PLAN BY THE COUNTY OF LOS ANGELES DOES NOT CONSTITUTE A REPRESENTATION AS TO THE ACCURACY OF THE LOCATION OR THE EXISTENCE OR NON-EXISTENCE OF ANY UNDERGROUND UTILITY PIPE, OR STRUCTURE WITHIN THE LIMITS OF THIS PROJECT. THIS NOTE APPLIES TO ALL PAGES.
 IF WORK IS TO BE DONE IN A STATE HIGHWAY, A PERMIT MUST BE OBTAINED FROM THE STATE OF CALIFORNIA, DIVISION OF HIGHWAYS, THE SOUTH BRANCH STREET, LOS ANGELES, CALIFORNIA.

COUNTY OF LOS ANGELES, CALIFORNIA
 JOHN A. LAMBE, COUNTY ENGINEER J. D. PARKHURST, CHIEF ENGINEER
 CO. SAN. DIST. NO. 7
 APPROVED BY: *Bernard J. Walsh* REGIONAL ENGINEER APPROVED BY: *J. D. Parkhurst* CHIEF ENGINEER

CHECKED BY: *Bernard J. Walsh*
 REG. C.E. NO. 10453

J.N. 0369.29

P.C. 8119 PAGE 2



COLLECT CHARGES AS INDICATED

40398