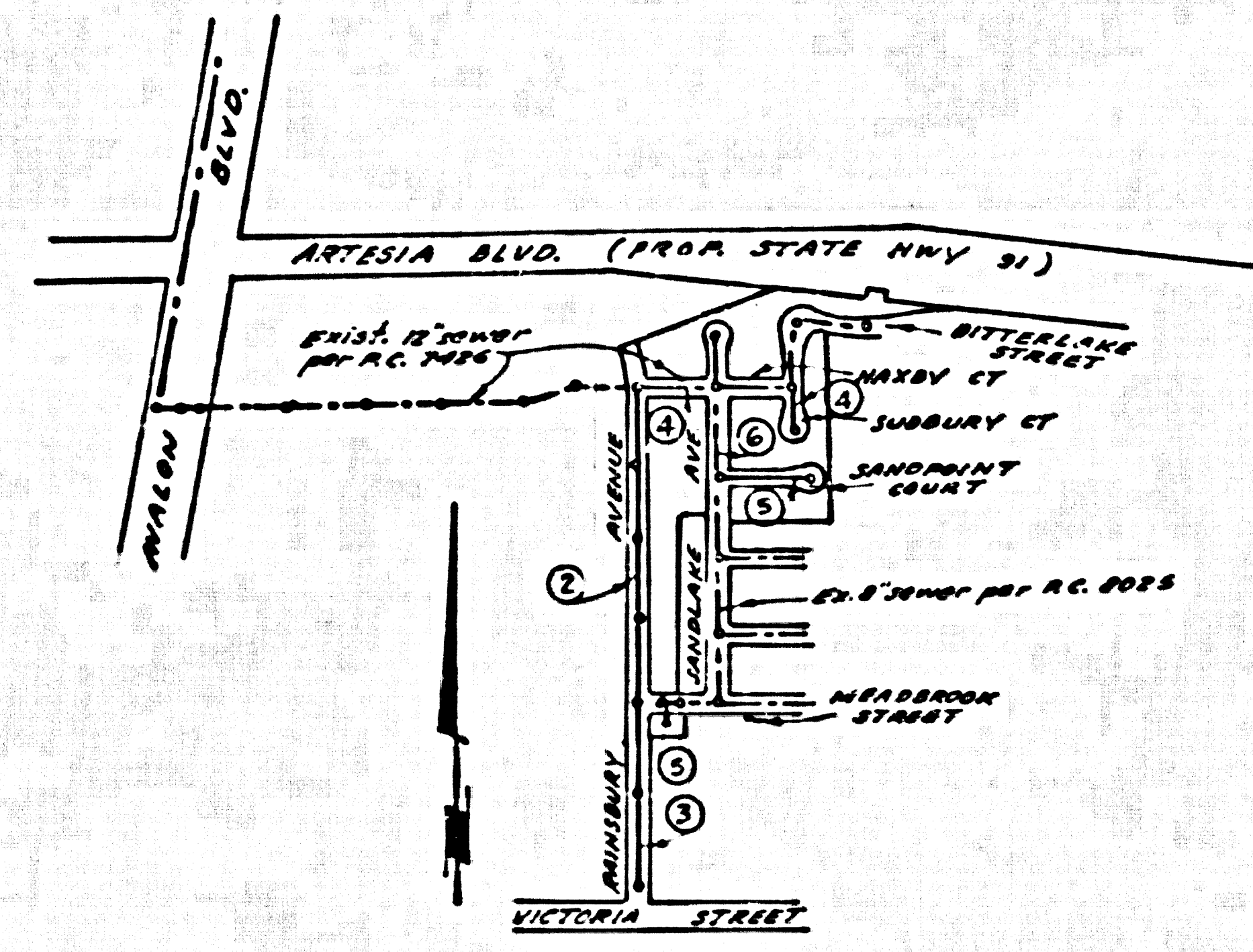


B.M. 5Y-3125 ELEV. 42.502
 4.5' in concrete base of N.E. leg
 of Power Transformer w/1 on E
 of Artesia Boulevard 1st Tower
 South of Artesia Boulevard
 GARDENA QUAD. 1960



INDEX MAP
 TRACT N^o 28669
 P.C. 8122
 Scale 1" = 500'

No connections for the disposal of
 industrial wastes shall be made to
 sewers shown on these drawings
 without written permission from the
 Chief Engineer and General Manager
 of the County Sanitation Districts.

5-22-69 Added M.H. @ Sta. 4+42.15, Page 5 &
 reversed from existing plan when note.
 Added C.L.P.C. & F.310 E. Page 3
 Added 10' encasement on Page 4

Approved: *Paul H. Barrios*
 Reg. C.E. No. 13960

THE FOLLOWING LATEST REVISED STANDARD PLANS ON FILE IN THE OFFICE OF
 THE COUNTY ENGINEER SHALL APPLY IN THE CONSTRUCTION OF THIS PROJECT:

LEGEND	5-1
MINIMUM EXCAVATION SAFETY REQUIREMENTS	5-2
BLACK MANHOLE	5-3
MAN-REINFORCED RECAST CONCRETE MANHOLE	5-5
MANHOLE FRAME AND COVER	5-13
MANHOLE STEP	5-17
BEDDING FOR SEWER PIPE	5-21
CRADLING AND ENCASUREMENT	5-23
WIP AND TIE SUPPORT	5-24
ALLOWABLE TRENCH WIDTHS	5-33

LENNOX BLDG. DIST. NO. 7

- NOTES:
1. PROVIDE STAKES ON THE PROPERTY LINE OR PROPERTY LINES PRODUCED AT RIGHT ANGLES TO THE SEWER LINE AT THE CENTER LINE OF EACH MANHOLE.
 2. NO REPRESENTATIVE OF THE COUNTY ENGINEER WILL SURVEY OR LAY OUT ANY PORTION OF THE WORK.
 3. THE PRIVATE ENGINEER SHALL FURNISH THE COUNTY ENGINEER WITH GRADE SHEETS AND STATIONING FOR ALL HOUSE LATERALS "T" AND "Y" BRANCHES AND SHALL PROVIDE STAKES FOR THEM AT THEIR PROPER LOCATIONS WITH STATIONING PLAINLY MARKED. ALL HOUSE LATERALS SHALL BE CONSTRUCTED BY A STRAIGHT ALIGNMENT AT RIGHT ANGLES FROM THE MAIN LINE SEWER EXCEPT AS SHOWN ON THE PLANS. HOUSE LATERALS FROM CHIMNEYS SHALL HAVE AN ANGLE OF LESS THAN 45° WITH THE MAIN LINE SEWER AND CHANGE IN ALIGNMENT SHALL BE INDICATED BY NOTES BY THE PRIVATE ENGINEER.
 4. THE PRIVATE ENGINEER SHALL FURNISH THE HOUSE LATERAL DEPTH AT THE PROPERTY LINE BELOW THE TOP OF CURB ELEVATION FOR EACH HOUSE LATERAL ON THE GRADE SHEET.
 5. NO REVISIONS SHALL BE MADE IN THESE PLANS WITHOUT THE APPROVAL OF THE COUNTY ENGINEER.
 6. THE CONTRACTOR SHALL NOTIFY THE CONSTRUCTION DIVISION BY TELEPHONE, MARSHALL 5-8400, EXT. 01300, AT LEAST TWENTY-FOUR HOURS BEFORE SHARING ANY WORK UNDER THIS CONTRACT.
 7. ALL STRUCTURES SHALL BE EITHER BRICK MANHOLES PER S-3 OR PRECAST CONCRETE MANHOLES PER S-5 OR S-6, EXCEPT AS NOTED.
 8. USE STANDARD MANHOLE FRAMES AND COVERS, S-13, EXCEPT AS NOTED.
 9. MANHOLE TOPS IN UNIMPROVED RIGHTS-OF-WAY TO BE SIX INCHES ABOVE FINISHED GRADE.
 10. USE EXTRA STRENGTH PIPE, ALL PIPE IS STANDARD DEPTH EXCEPT AS NOTED.
 11. UNGRADED CLAY PIPE LATERALS SHALL BE 12" X 12" FOR STD. SPEC. SEC. 202-8
 12. IF A POWER POLE IS WITHIN THREE FEET OF THE SEWER, THE SEWER SHALL BE ENCASED, PER S-23, TWO FEET ON EACH SIDE FROM THE POINT OF INTERFERENCE.
 13. IN DETERMINING THE COURSE OF CONSTRUCTION IT IS DETERMINED THAT THERE IS LESS THAN FOUR FEET OF COVER OVER THE TOP OF A MAIN LINE OR HOUSE LATERAL V.C.P. SEWER WHICH IS NOT INDICATED ON THE PLANS, THE PIPE SHALL BE ENCASED PER S-23, UNLESS OTHERWISE APPROVED BY THE COUNTY ENGINEER.
 14. HOUSE LATERALS TO BE CONSTRUCTED WITHIN PROPERTY LINE 6 FEET BELOW CURB GRADE EXCEPT AS NOTED.
 15. RESURFACE ALL TRENCHES WITHIN PAVED AREAS TO MEET L.A. COUNTY ROAD DEPT. OR CALIFORNIA STATE HIGHWAY REQUIREMENTS IN ACCORDANCE WITH PERMITS.
 16. SEWERS TO BE TESTED FOR LEAKAGE PER SECTION 206-2-3-3 STD. SPEC'S
 17. Refer to Section 206-2-1 of the Standard Specifications regarding safety orders.
 18. "Y" BRANCHES MAY BE USED IN PLACE OF "T" BRANCHES, EXCEPT AS NOTED.

County Sanitation Districts shall be notified prior to the following as that required inspection can be made (Phone 639-3888 x 636-9077)

Acceptance of the project.

COLLECT CHARGES AS INDICATED

NOTICE TO CONTRACTOR
 The existence and location of any underground utility pipes or structures shown on these plans are obtained by a search of the available records. To the best of my knowledge there are no existing utilities except as shown on these plans. The contractor is required to take due precautionary measures to protect the utility lines shown and any other lines not of record or not shown on these plans.

Paul H. Barrios
 Reg. C.E. No. 13960

TRACT N^o 28669
 PRIVATE CONTRACT NO. 8122

W.S. 26
 3 SHEETS, 6 PAGES
 SCALE: HORIZ. 1" = 100'
 VERT. 1" = 10'
 May, 1968

PREPARED BY THE OFFICE OF
E. L. PEARSON AND ASSOCIATES.

Paul H. Barrios May 23, 1968
 Reg. C.E. No. 13960

FOR LEGEND SEE PLAN NO. S-1

NOTES:
 GRADES TO WHICH THIS IMPROVEMENT IS TO BE CONSTRUCTED ARE SHOWN ON PLANS AND PROFILE. GRADE POINTS FOR TOP OF CURB, CENTER LINE OF STREET, OR CENTER LINE OF ALLEY ARE SHOWN BY CIRCLES ON PROFILES. ALL GRADE POINTS BETWEEN DESIGNATED POINTS THE GRADE SHALL BE ESTABLISHED SO AS TO CONFORM TO A STRAIGHT LINE DRAWN BETWEEN SAID DESIGNATED POINTS. ELEVATIONS ARE IN FEET ABOVE U.S.C. & G.S. MEAN LEVEL OF 1929.
 THE DRAWING AND THE DATA HEREON ARE HEREBY MADE A PART OF THE SPECIFICATIONS.
 WORK SHALL BE CONSTRUCTED ACCORDING TO STANDARD SPECIFICATIONS FOR PUBLIC WORKS CONSTRUCTION AND COUNTY ENGINEER SPECIAL SPECIFICATIONS DATED JAN. 1, 1968. ANY SHALL BE PROVIDED BY THE COUNTY ENGINEER.
 BEFORE WORK CAN BE STARTED, THE CONTRACTOR MUST OBTAIN A PERMIT TO EXCAVATE OR COUNTY STREET FROM THE L.A. COUNTY ROAD DEPT., DISTRICT OFFICE NO. 25, AND PAY A FEE TO THE COUNTY ENGINEER, ROOM 300, COUNTY ENGINEER'S BUILDING, 100 WEST SECOND STREET, LOS ANGELES, CALIFORNIA 90012. SPECIAL OFFICE, SUFFICIENT TO COVER THE COST OF CONSTRUCTION INSPECTION AND SECOND PLANS.
 APPROVAL OF THIS PLAN BY THE COUNTY OF LOS ANGELES DOES NOT CONSTITUTE A REPRESENTATION AS TO THE ACCURACY OF THE LOCATION OF OR THE EXISTENCE OR NON-EXISTENCE OF ANY UNDERGROUND UTILITY PIPE, OR STRUCTURE WITHIN THE LIMITS OF THE PROJECT. THIS NOTE APPLIES TO ALL PAGES.
 IF WORK IS TO BE DONE IN A STATE HIGHWAY, A PERMIT MUST BE OBTAINED FROM THE STATE OF CALIFORNIA, DIVISION OF HIGHWAYS, 100 SOUTH SPRING STREET, LOS ANGELES, CALIFORNIA.

COUNTY OF LOS ANGELES, CALIFORNIA
 JOHN A. LAMBIE, COUNTY ENGINEER
 I. D. PARKHURST, CHIEF ENGINEER

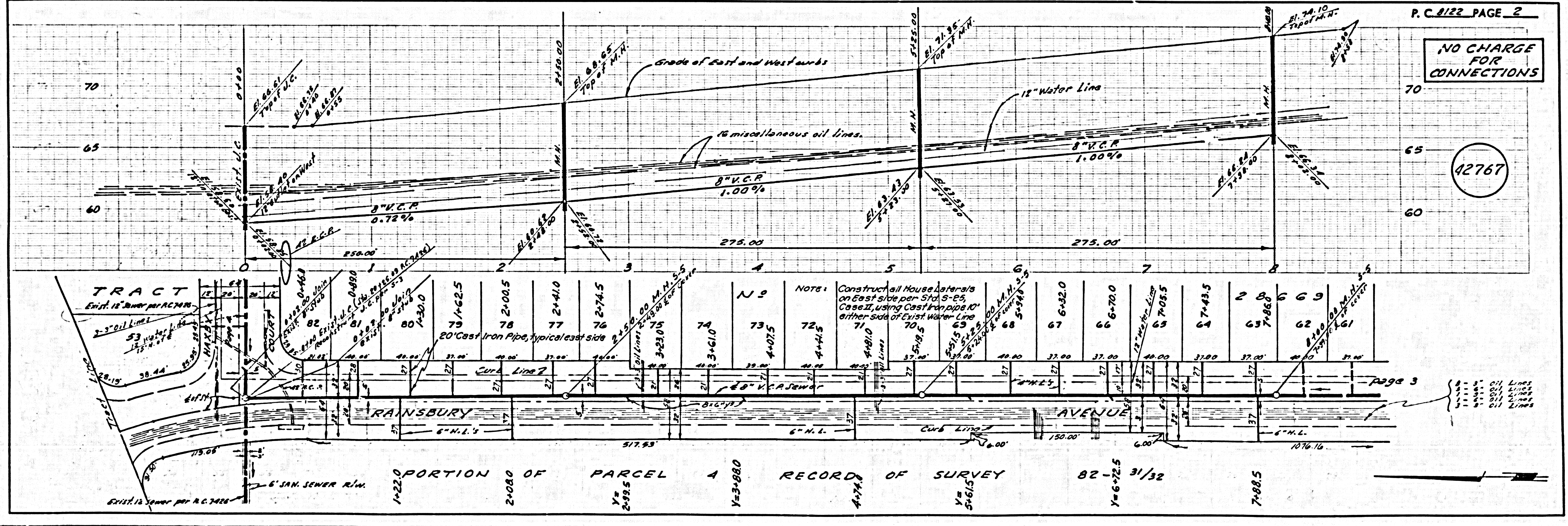
APPROVED BY: *Paul H. Barrios*
 Reg. C.E. No. 13960

APPROVED BY: *I. D. Parkhurst*
 CHIEF ENGINEER

CHECKED BY: *W. Guide*
 REG. C.E. NO. 2424

42766

J.N. 0250.02



NO CHARGE FOR CONNECTIONS

42767

page 3

