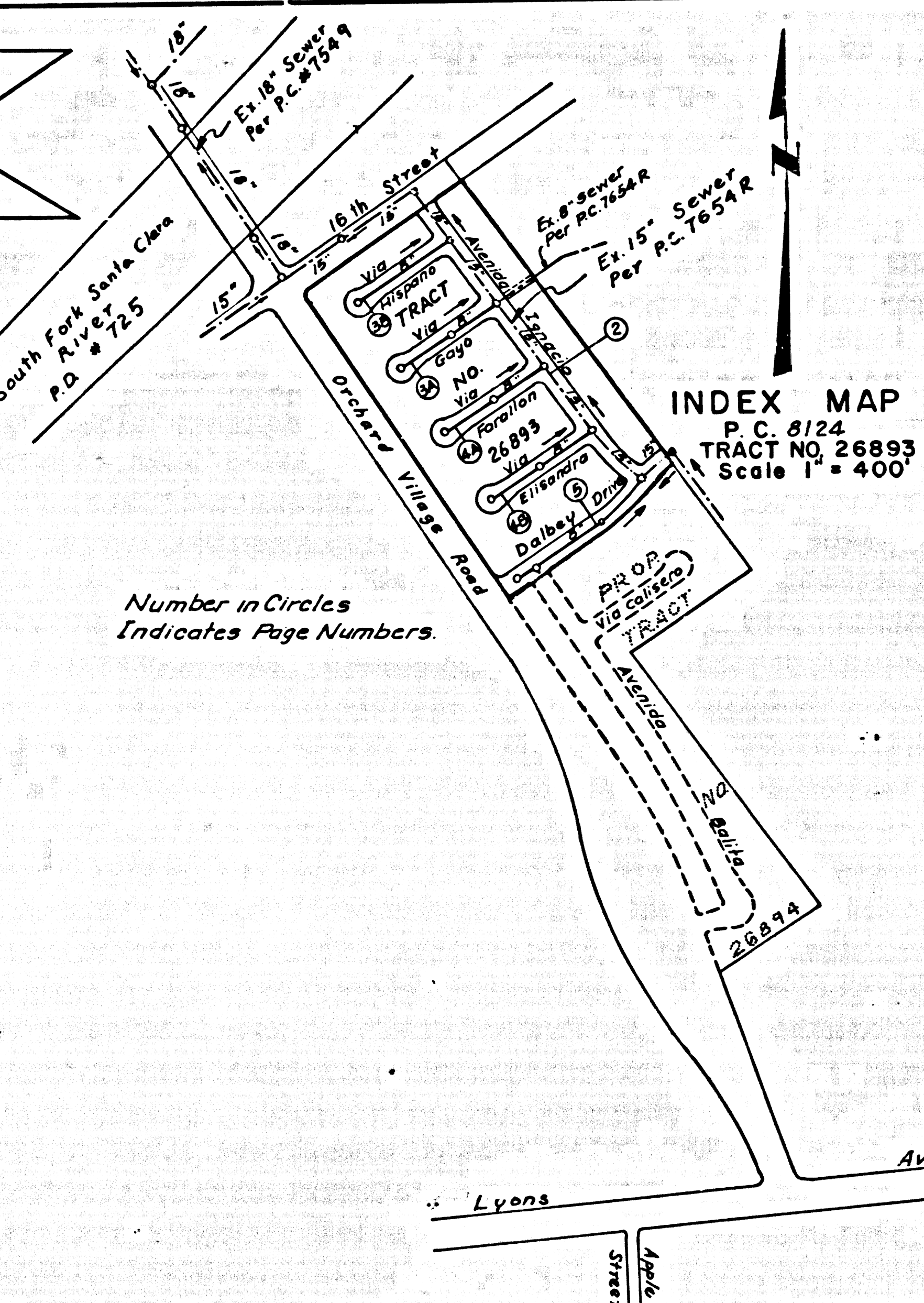


B.M. 51 642 ELEV. 1262.071  
 Road Dept. B.M. Top No. side Conc. base  
 at NE Cor. Edison High Tension Tower  
 at 173 W-383 35 St. & Lyons Avenue  
 and at 30 E & Wiley Canyon Road  
 NEWHALL QUAD. 19 58



ISSUE NO PERMITS  
 UNTIL P.C. 7654R 15  
 ACCEPTED BY THE  
 COUNTY OF LOS ANGELES

INDEX MAP  
 P.C. 8124  
 TRACT NO. 26893  
 Scale 1" = 400'

Number in Circles  
 Indicates Page Numbers.

NO CONNECTIONS FOR THE DISPOSAL OF  
 INDUSTRIAL WASTES SHALL BE MADE TO  
 SEWERS SHOWN ON THESE DRAWINGS  
 WITHOUT WRITTEN PERMISSION FROM THE  
 CHIEF ENGINEER AND GENERAL MANAGER  
 OF THE COUNTY SANITATION DISTRICT.

### DOUBLE SCALE NEWHALL BLDG. DIST. NO. 82

- NOTES:
- PROVIDE STAKES ON THE PROPERTY LINE OR PROPERTY LINES PRODUCE AT RIGHT ANGLES TO THE SEWER LINE AT THE CENTER LINE OF EACH MANHOLE.
  - NO REPRESENTATIVE OF THE COUNTY ENGINEER WILL SURVEY OR LAY OUT ANY PORTION OF THE WORK.
  - THE PRIVATE ENGINEER SHALL FURNISH THE COUNTY ENGINEER WITH GRADE SHEETS AND STATIONING FOR ALL HOUSE LATERALS AND 15' BRANCHES AND SHALL PROVIDE STAKES FOR THEM AT THESE PROPER LOCATIONS WITH STATIONING PLAINLY MARKED. ALL HOUSE LATERALS SHALL BE CONSTRUCTED IN A STRAIGHT ALIGNMENT AT RIGHT ANGLES FROM THE MAIN LINE SEWER EXCEPT AS SHOWN ON THE PLANS. HOUSE LATERALS FROM CHIMNEYS SHALL NOT HAVE AN ANGLE OF LESS THAN 45° WITH THE MAIN LINE SEWER. ANY CHANGE IN ALIGNMENT SHALL BE REQUESTED IN WRITING BY THE PRIVATE ENGINEER.
  - THE PRIVATE ENGINEER SHALL FURNISH THE HOUSE LATERAL DEPTH AT THE PROPERTY LINE BELOW THE TOP OF CURB ELEVATION FOR EACH HOUSE LATERAL ON THE GRADE SHEET.
  - NO REVISIONS SHALL BE MADE IN THESE PLANS WITHOUT THE APPROVAL OF THE COUNTY ENGINEER.
  - THE CONTRACTOR SHALL NOTIFY THE CONSTRUCTION DIVISION BY TELEPHONE, HARBOR 9-470, EXT. 8133, AT LEAST TWENTY-FOUR HOURS BEFORE STARTING ANY WORK UNDER THIS CONTRACT.
  - MANHOLES SHALL BE BRICK SEWER STRUCTURES PER S.S. PRECAST CONCRETE MANHOLES PER S-2 OR S-4 MAY BE USED AS AN ALTERNATE IN LOCATIONS APPROVED BY THE COUNTY ENGINEER.
  - "T" JOINT BRICKWORK MAY BE USED FOR CONDUCTIONS TO MAINLINE EXCEPT AS NOTED.
  - MANHOLES SHALL BE CONSTRUCTED TO A MINIMUM DEPTH OF 5' TO BE 6" ABOVE FINISHED GRADE.
  - USE EXTRA STRENGTH PIPE. ALL PIPE IS STANDARD DEPTH EXCEPT AS NOTED.
  - VITRIFIED CLAY PIPE JOINTS SHALL BE TYPE "D" "F" OR "G" PER STD. SPECS. SEC. 208-2.
  - IF A POWER POLE IS WITHIN THREE FEET OF THE SEWER, THE SEWER SHALL BE ENCASED, PER S-23, TWO FEET ON EACH SIDE FROM THE POINT OF INTERFERENCE.
  - IF DURING THE COURSE OF CONSTRUCTION IT IS DETERMINED THAT THERE IS LESS THAN FOUR FEET OF COVER OVER THE TOP OF A MAIN LINE OR HOUSE LATERAL V.C.P. SEWER WHICH IS NOT INDICATED ON THE PLANS, THE PIPE SHALL BE ENCASED PER S-23, UNLESS OTHERWISE APPROVED BY THE COUNTY ENGINEER.
  - HOUSE LATERALS TO BE CONSTRUCTED WITH INVERTS AT PROPERTY LINE 4 FEET BELOW CURB GRADE.
  - REINFORCE ALL TRENCHES WITHIN PAVED AREAS TO MEET L.A. COUNTY ROAD DEPT. OR CALIFORNIA STATE HIGHWAY REQUIREMENTS IN ACCORDANCE WITH PERMITS.
  - SEWERS TO BE TESTED FOR LEAKAGE PER SECTION 208-2.5.7 STD. SPECS.
  - REFER TO SECTION 7-10.4.1 OF THE STD. SPECS. REGARDING SAFETY BARRIERS. ON THE COUNTY ENGINEER'S STANDARD PLANS.
  - SEWER PIPE BEDDING SHALL CONFORM TO S-21.

THE FOLLOWING COUNTY ENGINEER STANDARD PLANS APPLY TO THIS PROJECT

LEGEND	MINIMUM PUBLIC SAFETY REQUIREMENTS	S-1
BRICK MANHOLE	NON REINFORCED PRECAST CONCRETE MANHOLE	S-2
MANHOLE FRAMES AND COVER	MANHOLE FRAMES AND COVER	S-3
MANHOLE STEP	MANHOLE STEP	S-4
BEDDING FOR SEWER PIPE	COLLARS AND ENCASING	S-5
WYE OR TEE SUPPORT	ALLOWABLE TRENCH WIDTHS	S-6
		S-7
		S-8
		S-9
		S-10
		S-11
		S-12
		S-13
		S-14
		S-15
		S-16
		S-17
		S-18
		S-19
		S-20
		S-21
		S-22
		S-23
		S-24
		S-25
		S-26
		S-27
		S-28
		S-29
		S-30
		S-31
		S-32
		S-33
		S-34
		S-35
		S-36
		S-37
		S-38
		S-39
		S-40
		S-41
		S-42
		S-43
		S-44
		S-45
		S-46
		S-47
		S-48
		S-49
		S-50
		S-51
		S-52
		S-53
		S-54
		S-55
		S-56
		S-57
		S-58
		S-59
		S-60
		S-61
		S-62
		S-63
		S-64
		S-65
		S-66
		S-67
		S-68
		S-69
		S-70
		S-71
		S-72
		S-73
		S-74
		S-75
		S-76
		S-77
		S-78
		S-79
		S-80
		S-81
		S-82
		S-83
		S-84
		S-85
		S-86
		S-87
		S-88
		S-89
		S-90
		S-91
		S-92
		S-93
		S-94
		S-95
		S-96
		S-97
		S-98
		S-99
		S-100

COLLECT CHARGES  
 County Sanitation Districts shall be  
 notified prior to the following so  
 that required inspection can be made.  
 (Phone 551-1000 or 600-8007)

NOTICE TO CONTRACTOR  
 The existence and location of any underground  
 utility pipes or structures shown on these plans  
 are obtained by a search of the available records.  
 The contractor is required to take due precau-  
 tionary measures to protect the utility lines shown  
 and any other lines not of record or not shown on  
 these plans.

PROFILE, ALIGNMENT AND GRADE OF  
 SANITARY SEWERS PAGE 1

CONSTRUCTED IN  
 TRACT NO. 26893

PRIVATE CONTRACT NO. 8124

W.S. 62  
 3 SHEETS, 5 PAGES  
 SCALE: VERT. 1" = 8' HORIZ. 1" = 40' JULY, 1968  
 PREPARED IN THE OFFICE OF  
 VOORHEIS-TRINDLE CO.  
 8919 Van Nuys Blvd., Van Nuys, California  
 REG. C. E. NO. 25/3

FOR LEGEND SEE PLAN NO. S-1  
 NOTE: GRADES TO WHICH THIS IMPROVEMENT IS TO BE CONSTRUCTED ARE SHOWN ON PLANS AND PROFILES. GRADE POINTS FOR TOP OF CURB, CENTER LINE OF STREETS, OR CENTER LINE OF ALLEYS ARE SHOWN BY CIRCLES ON PROFILES. AT ALL POINTS BETWEEN DESIGNATED POINTS THE GRADE SHALL BE ESTABLISHED SO AS TO CONFORM TO A STRAIGHT LINE DRAWN BETWEEN SAID DESIGNATED POINTS. ELEVATIONS ARE IN FEET ABOVE U.S.C. & G.S. SEA LEVEL DATUM OF 1929. THIS DRAWING AND THE DATA HEREON ARE HEREBY MADE A PART OF THE SPECIFICATIONS. WORK SHALL BE CONSTRUCTED ACCORDING TO STANDARD SPECIFICATIONS FOR PUBLIC WORKS CONSTRUCTION AND COUNTY ENGINEER SPECIAL PROVISIONS DATED FEB. 15, 1968 AS REVISED AND SHALL BE PROSECUTED ONLY IN THE PRESENCE OF THE COUNTY ENGINEER. BEFORE WORK CAN BE STARTED, THE CONTRACTOR MUST OBTAIN A PERMIT TO EXCAVATE IN COUNTY STREETS FROM THE L.A. COUNTY ROAD DEPT., DISTRICT ENGINEER, 1000 S. MAIN ST., LOS ANGELES, CALIF. AND PAY A FEE TO THE COUNTY ENGINEER, ROOM 300, COUNTY ENGINEERING BUILDING, 1000 S. MAIN ST., LOS ANGELES, CALIF. APPROVAL OF THIS PLAN BY THE COUNTY OF LOS ANGELES DOES NOT CONSTITUTE A REPRESENTATION AS TO THE ACCURACY OF THE LOCATION OF OR THE EXISTENCE OR NON-EXISTENCE OF ANY UNDERGROUND UTILITY PIPE, OR STRUCTURE WITHIN THE LIMITS OF THIS PROJECT. THIS NOTE APPLIES TO ALL PAGES. IF WORK IS TO BE DONE IN A STATE HIGHWAY, A PERMIT MUST BE OBTAINED FROM THE STATE OF CALIFORNIA, DIVISION OF HIGHWAYS, 120 SOUTH SPRING STREET, LOS ANGELES, CALIFORNIA.

COUNTY OF LOS ANGELES, CALIFORNIA  
 JOHN A. LAMBE, COUNTY ENGINEER J. D. PARKHURST, CHIEF ENGINEER  
 CO. SAN. DIST. NO. 82

APPROVED BY: *Sudley Williamson* REGIONAL ENGINEER APPROVED BY: *J. D. Parkhurst* CHIEF ENGINEER  
 CHECKED BY: *Ralph Schuler* 9/26/68 REG. C. E. NO. 13426

J.N. 0250.02

