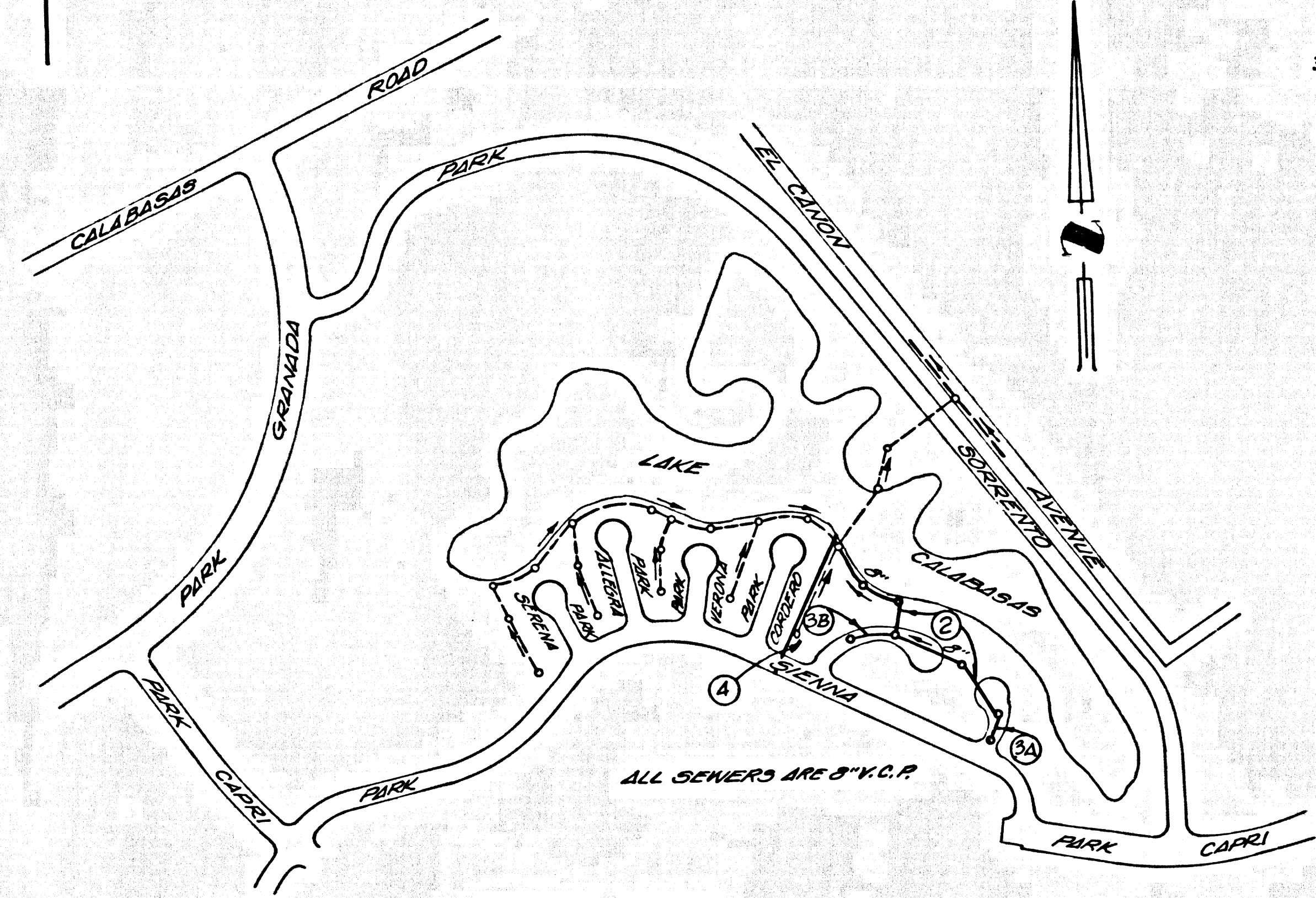


B.M. 7599 ELEV. 1005.804
 R.D.B.M. TAG 1 FT. N. B.C.R. @ NW
 COR. CRAFTSMAN RD. & CALABASAS
 RD. 61 FT. N. 18 FT. W. OF INT.
 MALIBU QUAD. 19 65



L.A.S. WIDENING MUNICIPAL WATER DISTRICT TESTING PROCEDURES

- TESTING OF SEWER LINES SHALL BE DONE BY THE AIR METHOD.
- MANHOLE LEAKAGE TESTS: AT THE DISCRETION OF THE DISTRICT ENGINEER, LEAKAGE TESTS MAY BE MADE BY THE AIR METHOD. THE AIR METHOD SHALL BE USED FOR ALL LINES AND MANHOLES. THE AIR METHOD SHALL BE USED FOR ALL LINES AND MANHOLES. THE AIR METHOD SHALL BE USED FOR ALL LINES AND MANHOLES.
- MAIN LINE TESTING: ALL LINES SHALL BE AIR TESTED. AIR PRESSURE IN TEST SECTION SHALL NOT EXCEED FIVE (5) POUNDS PER SQUARE INCH GAUGE PRESSURE AT ANY TIME. THE AIR SHALL BE SUPPLIED FROM A SOURCE WHICH GUARANTEES TO TWO (2) PSI PER SQUARE INCH GAUGE PRESSURE. TO TWO (2) PSI PER SQUARE INCH GAUGE PRESSURE. TO TWO (2) PSI PER SQUARE INCH GAUGE PRESSURE.

DOUBLE SCALE
 CALABASAS BLDG. DIST. NO. 9.1

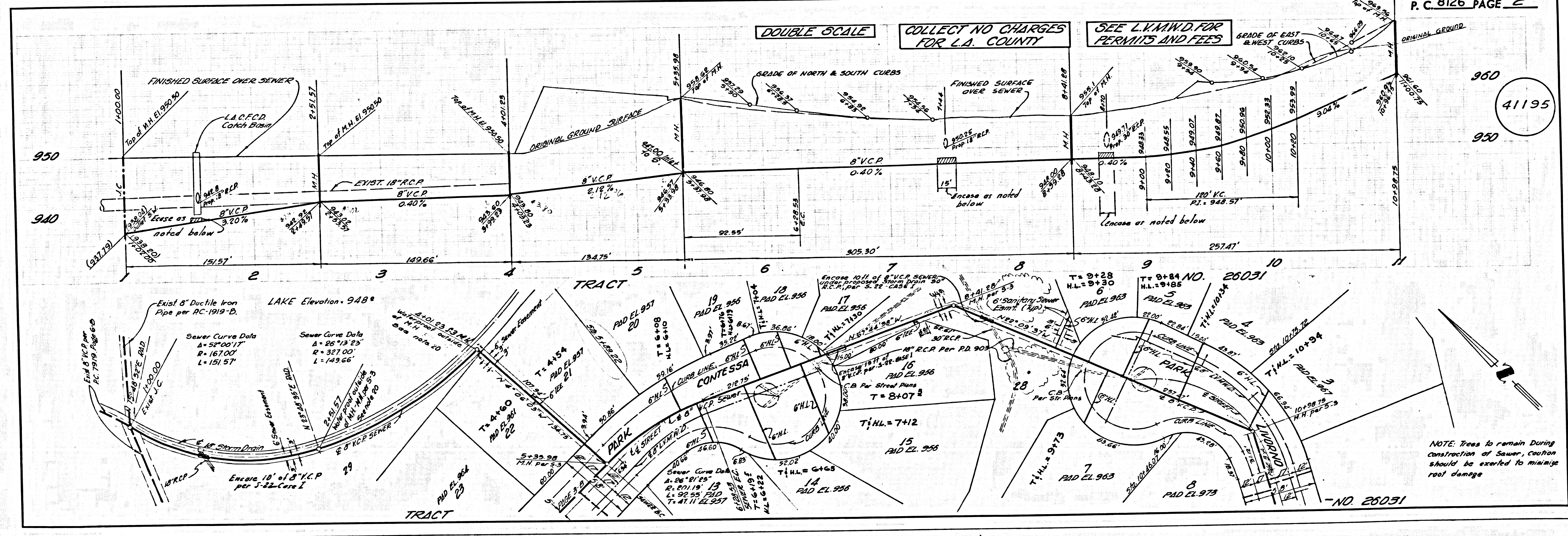
PROFILE, ALIGNMENT AND GRADE OF
 SANITARY SEWERS C. 8126
 AGE 1
 TO BE CONSTRUCTED IN

TRACT NO. 26031
 PRIVATE CONTRACT NO. 8126

W.S.
 2 SHEETS; 4 PAGES
 SCALE: VERT. 1" = 8'
 HORIZ. 1" = 40'
 MAY, 1969
 PREPARED IN THE OFFICES OF
 BECHTEL CORPORATION
 23600 CALABASAS ROAD, CALABASAS, CALIFORNIA
 BY: R.R. FEDERICI REG. C. E. NO. 14600

NOTE: GRADES TO WHICH THIS IMPROVEMENT IS TO BE CONSTRUCTED ARE SHOWN ON PLANS AND PROFILES. GRADE POINTS FOR TOP OF CURBS, CENTER LINE OF STREETS, OR CENTER LINE OF ALLEYS ARE SHOWN BY CIRCLES ON PROFILES. AT ALL POINTS BETWEEN DESIGNATED POINTS THE GRADE SHALL BE ESTABLISHED SO AS TO CONFORM TO A STRAIGHT LINE DRAWN BETWEEN SAID DESIGNATED POINTS. ELEVATIONS ARE IN FEET ABOVE M.S.L. & C.S. SEA LEVEL DATUM OF 1929. WORK SHALL BE CONSTRUCTED ACCORDING TO THE STANDARD SPECIFICATIONS FOR PUBLIC WORKS CONSTRUCTION AND SPECIAL PROVISIONS FOR THE CONSTRUCTION OF SANITARY SEWERS, PART 5, 1968, AS REVISED, AND SHALL BE PROSECUTED ONLY IN THE PRESENCE OF THE COUNTY ENGINEER. BEFORE WORK CAN BE STARTED, THE CONTRACTOR MUST OBTAIN A PERMIT TO EXCAVATE IN COUNTY STREETS FROM THE L. A. COUNTY ROAD DEPT., DISTRICT OFFICE NO. 3, AND PAY A FEE TO THE COUNTY ENGINEER, ROOM 330, COUNTY ENGINEERING BUILDING, 108 WEST SECOND STREET OR MALIBU, REGIONAL OFFICE, SUFFICIENT TO COVER THE COST OF CONSTRUCTION INSPECTION AND RECORD DRAWING. APPROVAL OF THIS PLAN BY THE COUNTY OF LOS ANGELES DOES NOT CONSTITUTE A REPRESENTATION AS TO THE ACCURACY OF THE LOCATION OR THE EXISTENCE OR NON-EXISTENCE OF ANY UNDERGROUND UTILITY PIPE, OR STRUCTURE WITHIN THE LIMITS OF THIS PROJECT. THIS NOTE APPLIES TO ALL PAGES. IF WORK IS TO BE DONE IN A STATE HIGHWAY, A PERMIT MUST BE OBTAINED FROM THE STATE OF CALIFORNIA, DIVISION OF HIGHWAYS, 130 SOUTH SPRING STREET, LOS ANGELES, CALIFORNIA. COUNTY OF LOS ANGELES, CALIFORNIA
 JOHN A. LAMBIE, COUNTY ENGINEER
 APPROVED BY: [Signature] DATE: 5-9-69
 APPROVED BY: [Signature] DATE: 5-9-69
 CHECKED BY: [Signature] DATE: 5-9-69
 REG. C.E. NO. 14280

COLLECT CHARGES
 AS INDICATED



NOTE: Trees to remain During construction of Sewer, caution should be exercised to minimize root damage

