

B.M. 5L C42 ELEV. 1262.07
 Road Dept. B.M. Top No. 316 conc. base
 of N.E. Cor. Edison High Tension Tower
 at N. 37.3 W. 5.3 E. 35.00' E Lyons Avenue
 and E. 30' E Wiley Canyon Road.
 NEWHALL QUAD. 19 58

THE FOLLOWING COUNTY ENGINEER STANDARD PLANS
 APPLY TO THIS PROJECT

LEGEND	5-1
MINIMUM PUBLIC SAFETY REQUIREMENTS	5-2
BRICK MANHOLE	5-3
NON REINFORCED PRECAST CONCRETE MANHOLE	5-5
REINFORCED PRECAST CONCRETE MANHOLE	5-6
MANHOLE FRAME AND COVER	5-15
MANHOLE STEP	5-17
BEDDING FOR SEWER PIPE	5-21
CRAPLING AND ENCASUREMENT	5-23
WYE OR TEE SUPPORT	5-26
ALLOWABLE TRENCH WIDTHS	5-33
CHIMNEY PIPE AND BASE	5-37

NOTE: CONTRACTOR SHALL NOTIFY
 PACIFIC LIGHTING SERVICE (SUPPLY CO.)
 24 HOURS PRIOR TO CONSTRUCTION
 IN THE VICINITY OF THE
 GAS LINES. ALSO NOTIFY
 SOUTHERN CALIFORNIA EDISON CO.
 PRIOR TO CONSTRUCTION IN THE
 VICINITY OF DUCTS.

INDEX MAP
 P.C. 8132
 TRACT NO. 28671
 Scale 1" = 400'

NOTE: Number in circles
 indicates page numbers

Lots not served: 117 thru 119
 Pedestrian walk.

County Sanitation Districts shall be
 notified prior to the following so
 that required inspection can be made
 17-118 537-1023 & 538-0887

Acceptance of the project:

No connections for the disposal of
 industrial wastes shall be made to
 sewers shown on these drawings
 without written permission from the
 Chief Engineer and General Manager
 of the County Sanitation Districts.

DOUBLE SCALE
 NEWHALL BLDG. DIST. NO. 82

PROFILE, ALIGNMENT AND GRADE OF
 SANITARY SEWERS PAGE 1

CONSTRUCTED IN
 TRACT NO. 28671
 AND VARIOUS RIGHTS OF WAY

PRIVATE CONTRACT NO. 8132

W.S. 62

5 SHEETS, 10 PAGES

SCALE: VERT. 1" = 4' HORIZ. 1" = 40'

PREPARED IN THE OFFICES OF
 VOORHEES-TRINDLE CO.
 5319 Van Nuys Blvd., Van Nuys, California

REG. C. E. NO. 7573

FOR LEGEND SEE PLAN NO. S-1

NOTE:
 GRADES TO WHICH THIS IMPROVEMENT IS TO BE CONSTRUCTED ARE SHOWN ON PLANS AND PROFILE. GRADE POINTS FOR TOP OF CURBS, CENTER LINE OF STREETS, OR CENTER LINE OF ALLEYS ARE SHOWN BY CIRCLES ON PROFILES. AT ALL POINTS BETWEEN DESIGNATED POINTS THE GRADE SHALL BE ESTABLISHED SO AS TO CONFORM TO A STRAIGHT LINE DRAWN BETWEEN SAID DESIGNATED POINTS. ELEVATIONS ARE IN FEET ABOVE U.S.C. & G.S. MEAN DATUM OF 1929.
 THIS DRAWING AND THE DATA HEREON ARE HEREBY MADE A PART OF THE SPECIFICATIONS.
 SPECIAL PROVISIONS DATED FEB. 12, 1934 AS REVISED AND SHALL BE PROSECUTED ONLY IN THE PRESENCE OF THE COUNTY ENGINEER. WORK SHALL BE CONDUCTED ACCORDING TO THE STANDARD SPECIFICATIONS FOR PUBLIC WORKS CONSTRUCTION AND COUNTY ENGINEER'S SPECIAL PROVISIONS DATED FEB. 12, 1934 AS REVISED AND SHALL BE PROSECUTED ONLY IN THE PRESENCE OF THE COUNTY ENGINEER. ROAD DEPT. DISTRICT OFFICE NO. 3, LOS ANGELES, CALIFORNIA, AND PAY A FEE TO THE COUNTY ENGINEER, ROOM 320, COUNTY ENGINEER'S BUILDING, 100 WEST SECOND STREET, LOS ANGELES, CALIFORNIA, FOR THE COST OF CONSTRUCTION INSPECTION AND RECORD PLANS.
 APPROVAL OF THIS PLAN BY THE COUNTY OF LOS ANGELES DOES NOT CONSTITUTE A REPRESENTATION AS TO THE ACCURACY OF THE LOCATION OF OR THE EXISTENCE OR NON-EXISTENCE OF ANY UNDERGROUND UTILITY PIPE, OR STRUCTURE WITHIN THE LIMITS OF THIS PROJECT. THIS NOTE APPLIES TO THE COUNTY OF LOS ANGELES. IF WORK IS TO BE DONE IN A STATE HIGHWAY, A PERMIT MUST BE OBTAINED FROM THE STATE OF CALIFORNIA, DIVISION OF HIGHWAYS, 120 SOUTH SPRING STREET, LOS ANGELES, CALIFORNIA.

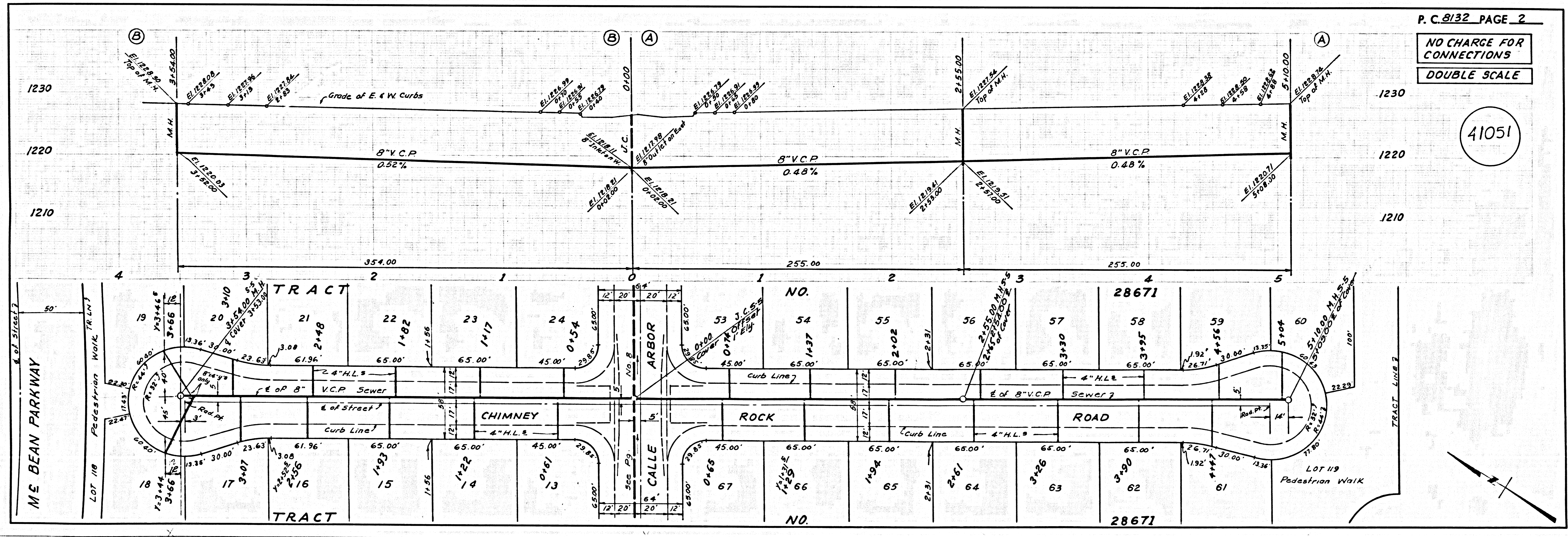
COUNTY OF LOS ANGELES, CALIFORNIA
 JOHN A. LAMBE, COUNTY ENGINEER J. D. PARKHURST, CHIEF ENGINEER
 CO. SAN DIST. NO. 32

APPROVED BY: *William Williams* REGIONAL ENGINEER APPROVED BY: *Walter ...* OFFICE ENGINEER
 CHECKED BY: *Ralph Schaff* REG. C.E. NO. 13906

J.N. 0250.02

COLLECT CHARGES
 AS INDICATED

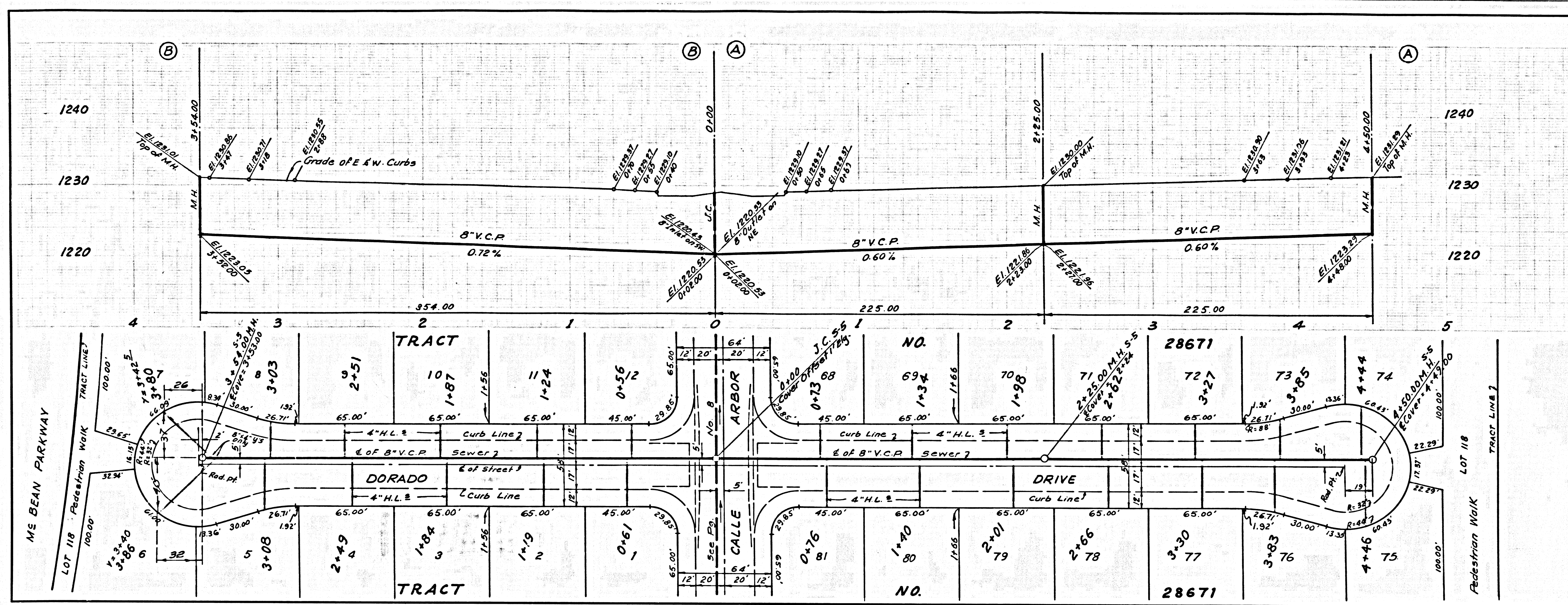
NOTICE TO CONTRACTOR
 The existence and location of any underground utility pipes or structures shown on these plans are obtained by a search of the available records. To the best of my knowledge there are no existing utilities, except as shown on these plans. The contractor is required to take due precautionary measures to protect the utility lines shown and any other lines not of record or not shown on these plans.
E. M. Lewis REG. C.E. NO. 1503



P. C. 8132 PAGE 2

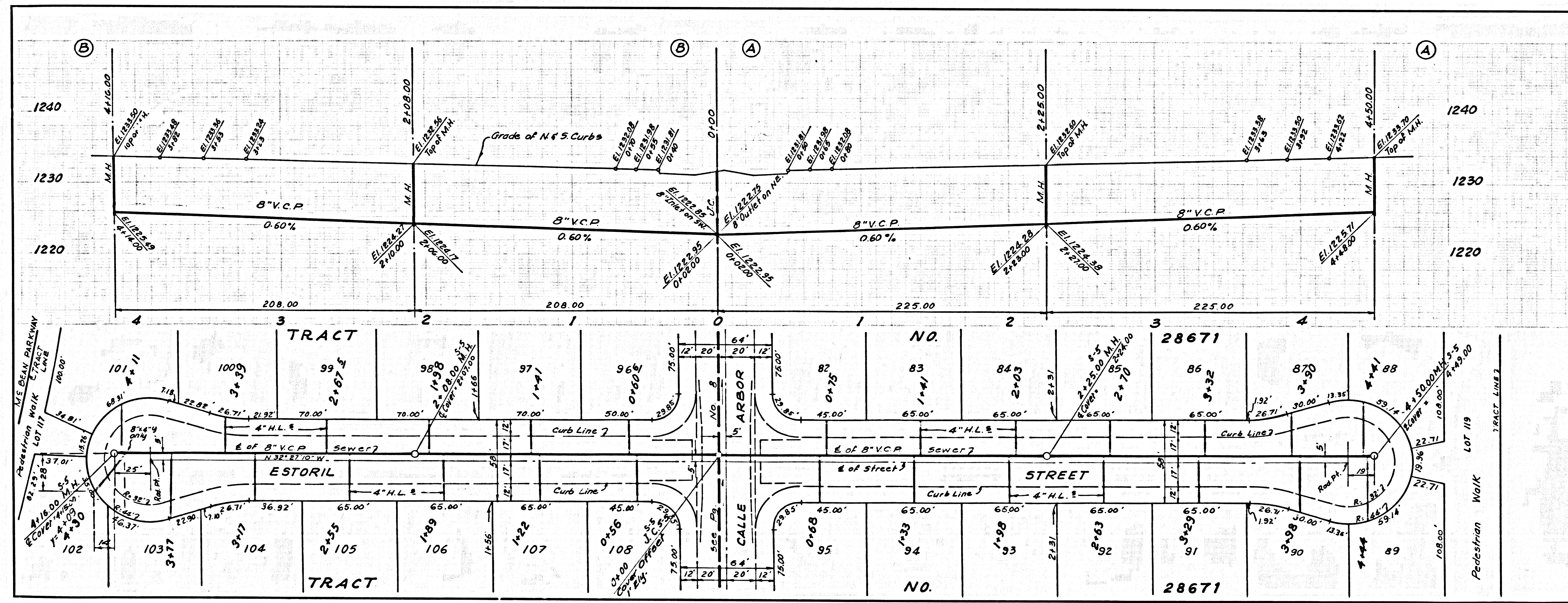
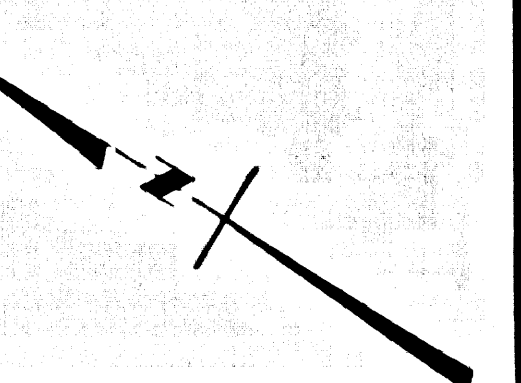
NO CHARGE FOR CONNECTIONS
 DOUBLE SCALE

41051



PC 8132 PAGE 3
 NO CHARGE FOR CONNECTIONS
 DOUBLE SCALE

41052



PC 8132 PAGE 4
 NO CHARGE FOR CONNECTIONS
 DOUBLE SCALE

41053

