

B.M. BY 3956 ELEV. 37.906
 L.F.T. E. end of conc. for trap of auto-
 matic signal 7 ft. E. of Wilmington
 Ave. 25 ft. N. of Lincoln St.
 GARDENA QUAD. 1965 ADJ.

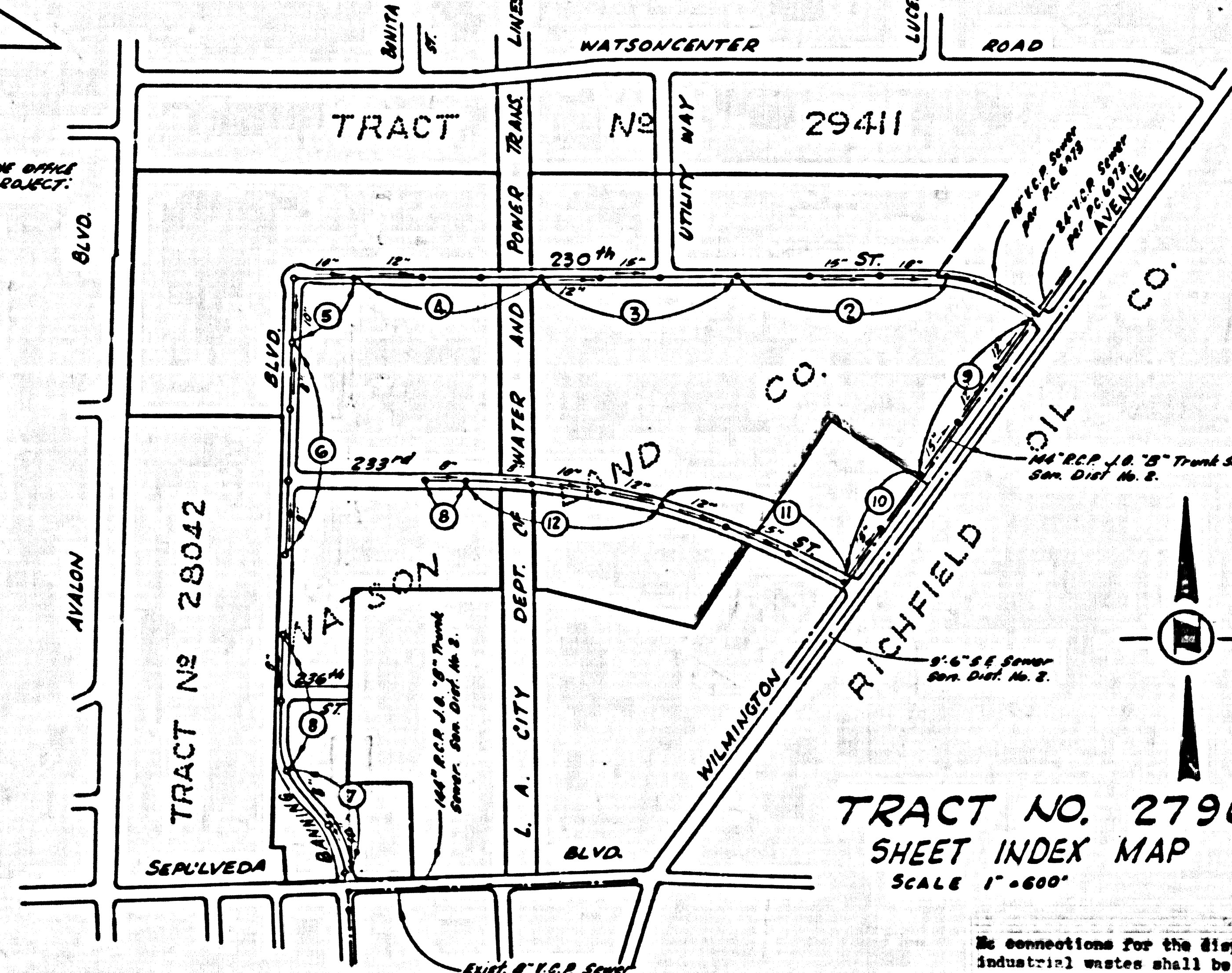
Revisions:
 Added to page 7 - 6" H.C. 18" R.C.P. and
 30" S.C.P. - 8" H.C.P. 18" R.C.P. 8-1-52
 Approved by: *Marion E. Moore*, 5-31-52

DOUBLE SCALE CITY OF CARSON BLDG. DIST. NO. 12.05

PROFILE, ALIGNMENT AND GRADE OF **P.C. 8138**
SANITARY SEWERS PAGE 1
 TO BE CONSTRUCTED IN
TRACT NO. 27962
WATSON INDUSTRIAL CENTER
PRIVATE CONTRACT NO. 8138

- THE FOLLOWING LATEST REVISED STANDARD PLANS ON FILE IN THE OFFICE OF THE CITY ENGINEER SHALL APPLY IN THE CONSTRUCTION OF THIS PROJECT.
- LEGEND
 - MINIMUM EXCAVATION SAFETY REQUIREMENTS 5-1
 - BRICK MANHOLE 5-2
 - NON-REINFORCED PRECAST CONCRETE MANHOLE 5-3
 - REINFORCED PRECAST CONCRETE MANHOLE 5-4
 - TRAP MANHOLE BASE 5-10
 - MANHOLE FRAME AND COVER 5-15
 - STANDARD MANHOLE STEP 5-17
 - TRAP MANHOLE CASTING 5-18
 - BEDDING FOR SEWER PIPE 5-21
 - SPECIAL SUPPORT AND PROTECTION 5-22
 - CRADLING AND EMBEZZEMENT 5-23
 - PILE OR TIE SUPPORT 5-24
 - CHIMNEY PIPE AND BASE 5-27
 - STOPPER 5-30
 - ALLOWABLE TRENCH WIDTHS 5-33

- Revisions:
 Added 6" H.C. on Pages 7 & 8
 changed manhole to 10" pipe
 No. 12/14/52
 Approved by: *Marion E. Moore*, 12-14-52
 R.C.E. 18,544
- Revisions:
 Added 6" H.C. on Pages 2 & 3
 Approved by: *B. Volante*, 2/17/53
 R.C.E. 10653
- Revisions:
 Added 6" H.C. on Pages 2, 3, 4, 5, 6, 7, 8
 Added manhole app 4618
 Approved by: *K. O. Thompson*, 1/13/53
 R.C.E. 10656



- NOTES:
1. PROVIDE STAKES ON THE PROPERTY LINE OR PROPERTY LINES PRODUCED AT RIGHT ANGLES TO THE SEWER LINE AT THE CENTER LINE OF EACH MANHOLE.
 2. NO REPRESENTATIVE OF THE CITY ENGINEER WILL SURVEY OR LAY OUT ANY PORTION OF THE WORK.
 3. THE PRIVATE ENGINEER SHALL FURNISH THE CITY ENGINEER 11" GRADE SHEETS AND STATIONING FOR ALL HOUSE LATERALS, AND 12" BRANCHES AND SHALL PROVIDE STAKES FOR THEM AT THEIR PROPER LOCATIONS WITH STATIONING PLAINLY MARKED. ALL HOUSE LATERALS SHALL BE CONSTRUCTED IN A STRAIGHT ALIGNMENT AT RIGHT ANGLES FROM THE MAIN LINE SEWER EXCEPT AS SHOWN ON THE PLANS. HOUSE LATERALS FROM CHIMNEYS SHALL NOT HAVE AN ANGLE OF LESS THAN 45° WITH THE MAIN LINE SEWER. ANY CHANGE IN ALIGNMENT SHALL BE REQUESTED IN WRITING BY THE PRIVATE ENGINEER.
 4. THE PRIVATE ENGINEER SHALL FURNISH THE HOUSE LATERAL DEPTH AT THE PROPERTY LINE BELOW THE TOP OF CURB ELEVATION FOR EACH HOUSE LATERAL ON THE GRADE SHEET.
 5. NO REVISIONS SHALL BE MADE IN THESE PLANS WITHOUT THE APPROVAL OF THE CITY ENGINEER.
 6. THE CONTRACTOR SHALL NOTIFY THE CONSTRUCTION DIVISION BY TELEPHONE, RADIO OR BY MAIL, AT LEAST TWENTY-FOUR HOURS BEFORE STARTING ANY WORK UNDER THIS CONTRACT.
 7. MANHOLES SHALL BE BRICK SEWER STRUCTURES PER S-3. PRECAST CONCRETE MANHOLES PER S-4 OR S-5 MAY BE USED AS AN ALTERNATE IN LOCATIONS APPROVED BY THE CITY ENGINEER.
 8. MANHOLES SHALL BE CONSTRUCTED ACCORDING TO STANDARD SPECIFICATIONS FOR PUBLIC UTILITY CONSTRUCTION, DATED JANUARY 1948 AS REVISED AND SHALL BE PROSECUTED ONLY IN THE PRESENCE OF THE CITY ENGINEER.
 9. BEFORE WORK CAN BE STARTED, THE CONTRACTOR MUST OBTAIN A PERMIT TO EXCAVATE IN CITY STREETS FROM THE CITY ROAD DEPT., DISTRICT OFFICE NO. 3 AND PAY A FEE TO THE CITY ENGINEER, PER S-18, STANDARD SPECIFICATIONS FOR PUBLIC UTILITY CONSTRUCTION, DATED JANUARY 1948 AS REVISED.
 10. USE EXTRA STRENGTH PIPE. ALL PIPE IS STANDARD UNLESS SPECIFIED AS NOTED.
 11. REINFORCED CLAY PIPE JOINTS SHALL BE TYPE "D", "E" OR "F" PER STD. SPEC. SEC. 500-2.
 12. IF A POWER POLE IS WITHIN THREE FEET OF THE SEWER, THE SEWER SHALL BE ENCASED, PER S-22, TWO FEET ON EACH SIDE FROM THE POINT OF INTERFERENCE.
 13. IF DURING THE COURSE OF CONSTRUCTION IT IS DETERMINED THAT THERE IS LESS THAN FOUR FEET OF COVER OVER THE TOP OF A MAIN LINE OR HOUSE LATERAL V.C.P. SPHERE WHICH IS NOT INDICATED ON THE PLANS, THE PIPE SHALL BE ENCASED PER S-22, UNLESS OTHERWISE APPROVED BY THE CITY ENGINEER.
 14. HOUSE LATERALS TO BE CONSTRUCTED WITH 1/2" OVER PER FOOT TO THE PROPOSED PROPERTY LINE.
 15. RESURFACE ALL TRENCHES WITHIN PAVED AREAS TO MEET L.A. COUNTY ROAD DEPT. OR CALIFORNIA STATE HIGHWAY REQUIREMENTS IN ACCORDANCE WITH PERMITS.
 16. SEWERS TO BE TESTED PER LENGTH PER SECTION 206-2.2.1, STANDARD SPECIFICATIONS.
 17. REFER TO SECTION 2-10.01 OF THE STANDARD SPECIFICATIONS REGARDING SAFETY DEGREE.

W.S. 28
 6 SHEETS, 12 PAGES
 SCALE: HORIZ. 1"=800' VERT. 1"=10'
 MAY 1948
 PREPARED IN THE OFFICES OF
H. M. Scott & Associates, Inc.
 ROSEMEAD, CALIFORNIA
 BY: *George J. Jenkins*, 10/28/52
 George J. Jenkins REG. C.E. NO. 17284

**PRIVATE ENGINEER'S
 NOTICE TO CONTRACTOR**

The existence and location of any underground utility pipes or structures shown on these plans are defined by a survey of the available records. To the best of my knowledge there are no existing utilities except as shown on these plans.

The Contractor is required to take due precautionary measures to protect the utility lines shown and any other lines not of record or not shown on these plans.

The contractor shall notify all utility companies prior to construction of improvements shown on these plans.

County Sanitation Districts shall be notified prior to the following work that required inspection can be made (Phone 297-1025 - 636-3097)
 Care Drilling District trunk sewers
 Acceptance of the project.

**COLLECT CHARGES
 AS INDICATED**

CITY OF CARSON, CALIFORNIA

JOHN A. LAMBIE, CITY ENGINEER
John A. Lambie
 APPROVED BY: ORIGINAL SIGNATURE

J. D. PARKHURST, CHIEF ENGINEER
J. D. Parkhurst
 APPROVED BY: ORIGINAL SIGNATURE

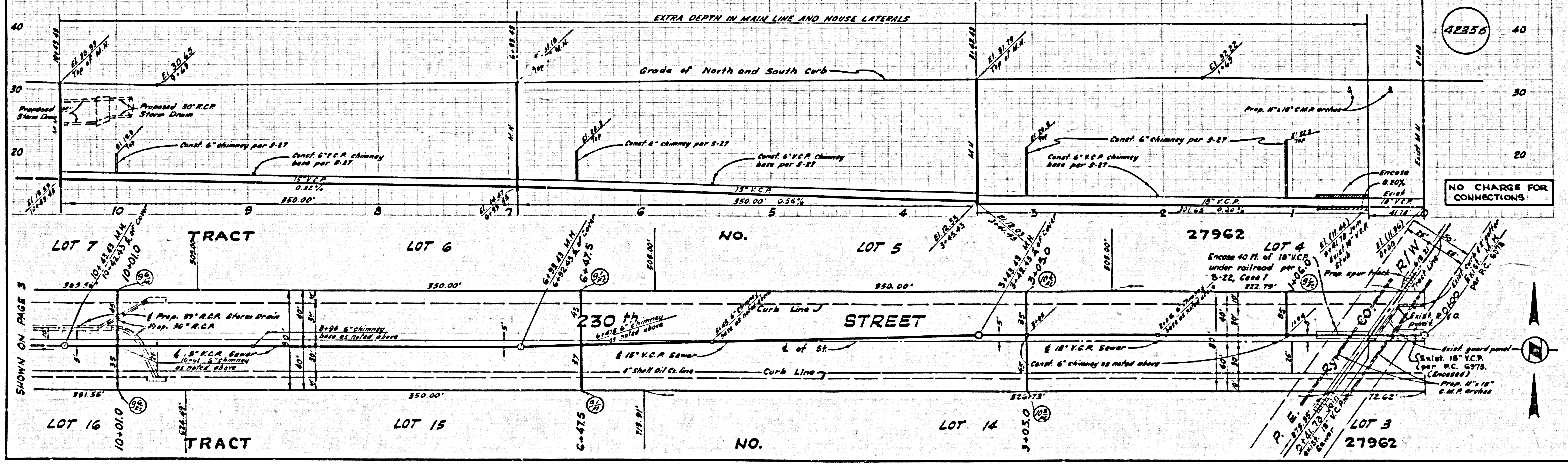
CHECKED BY: *Bernard Valley*, 1/13/53
 REG. C.E. NO. 10523

J.M. 3758 74

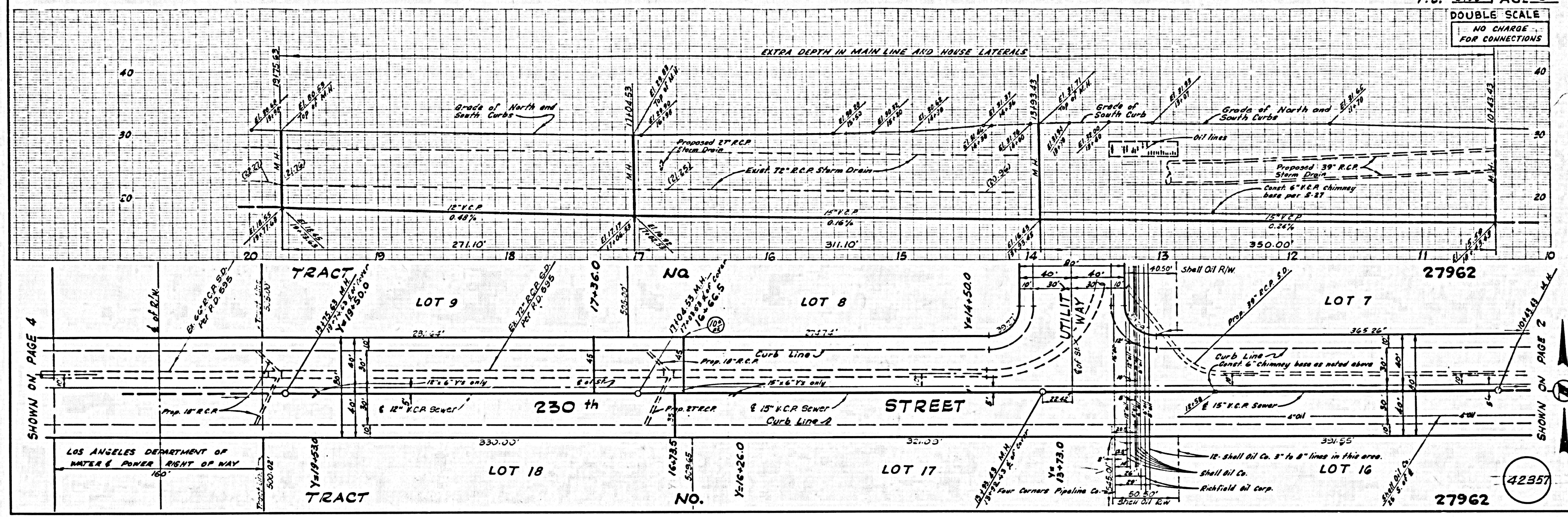
DOUBLE SCALE

42356

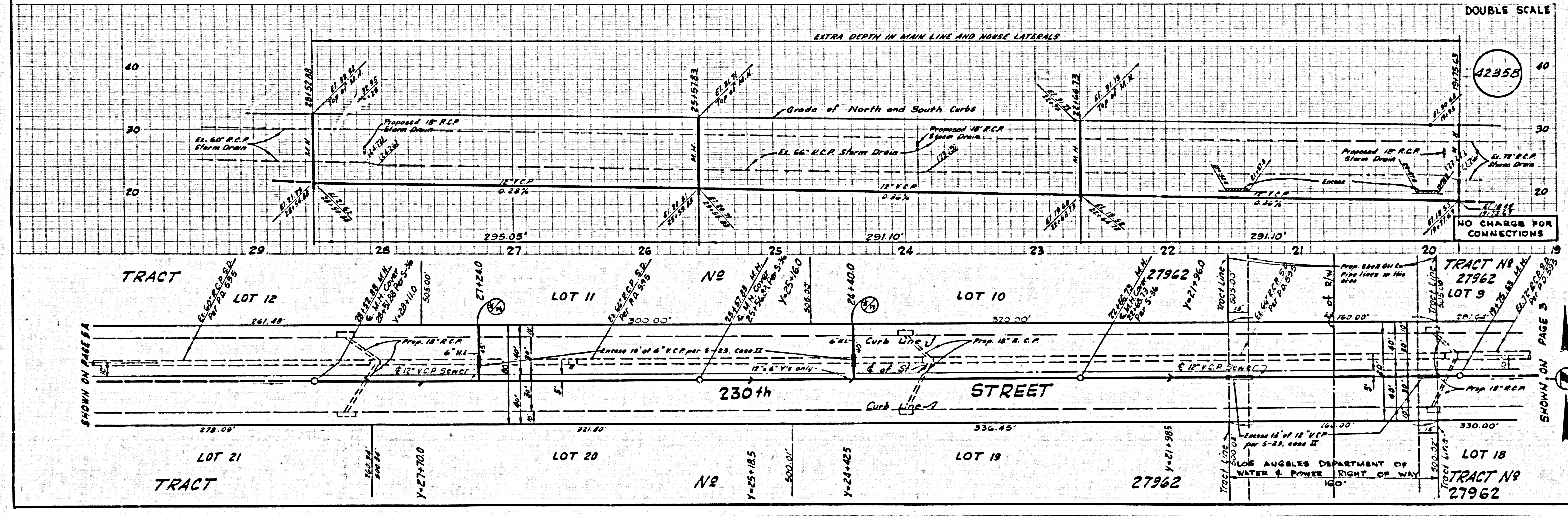
NO CHARGE FOR CONNECTIONS

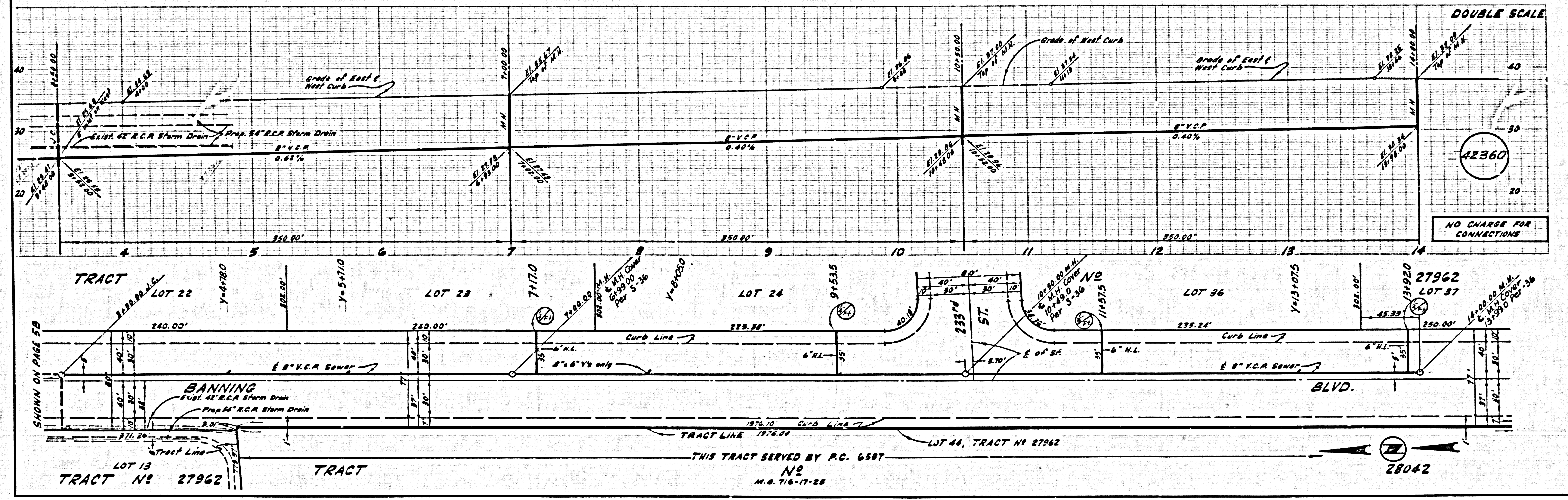
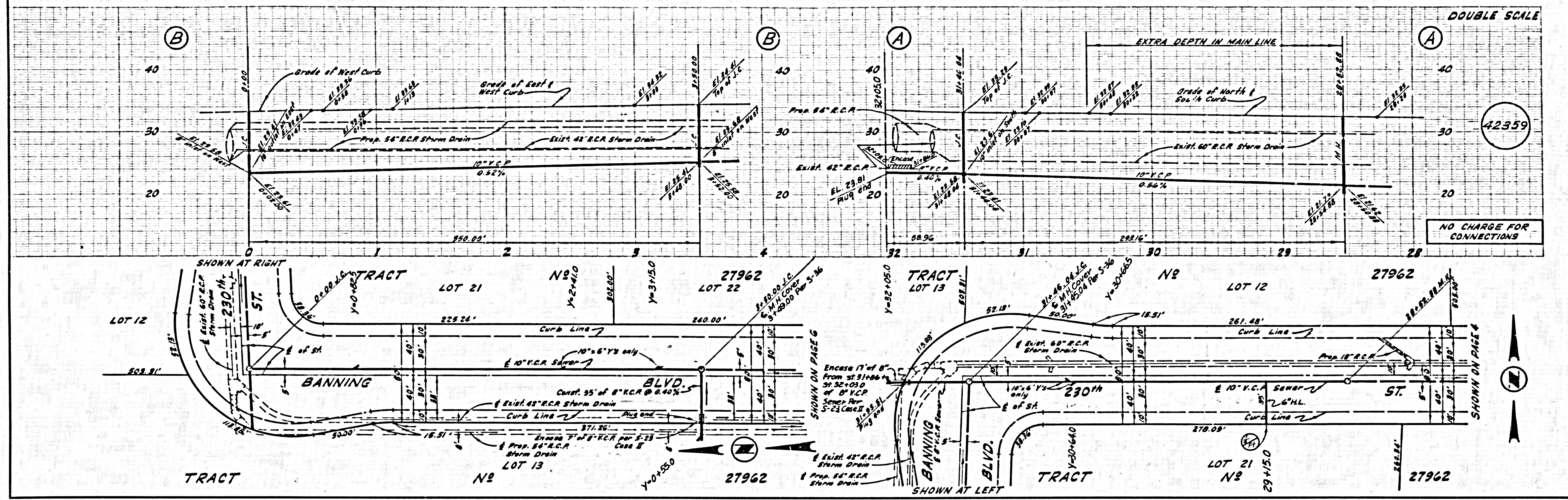


DOUBLE SCALE
NO CHARGE FOR CONNECTIONS

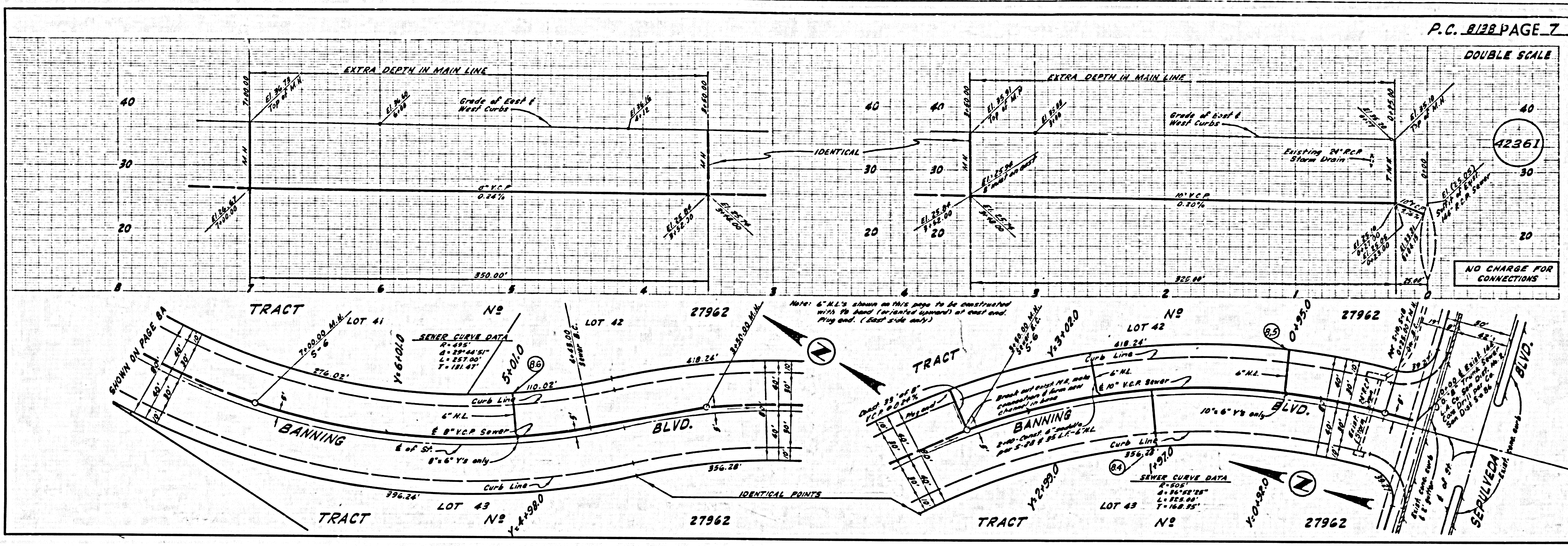


DOUBLE SCALE
NO CHARGE FOR CONNECTIONS



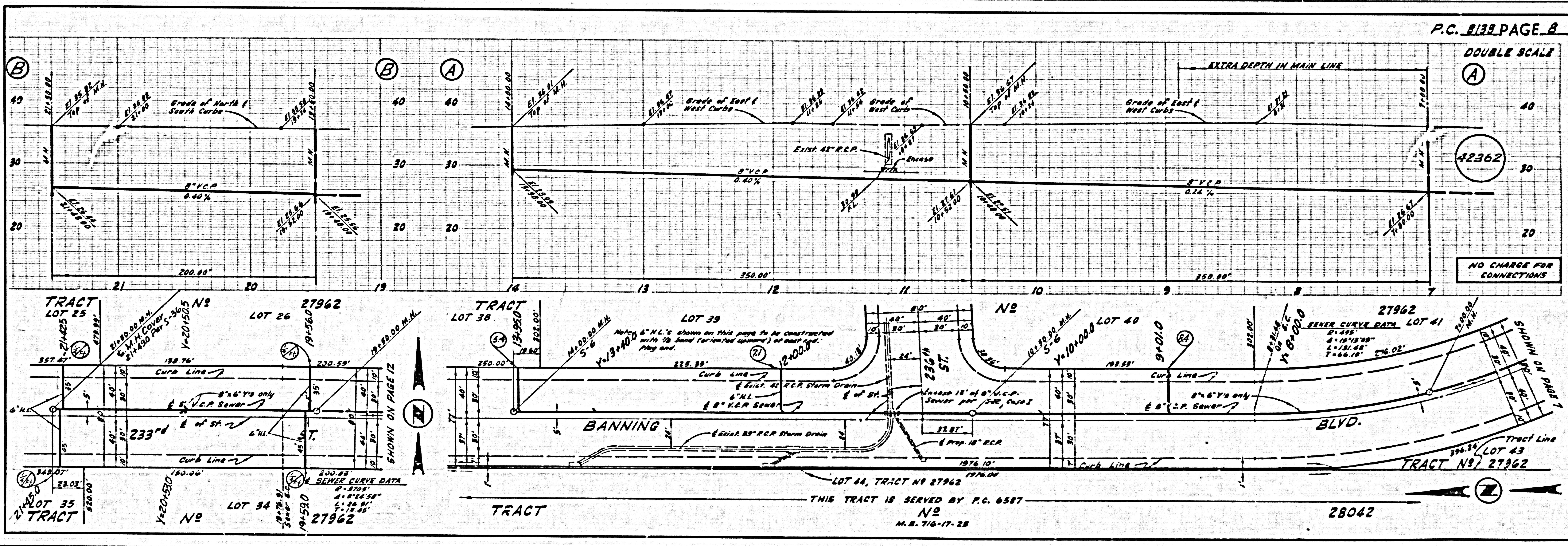


DOUBLE SCALE

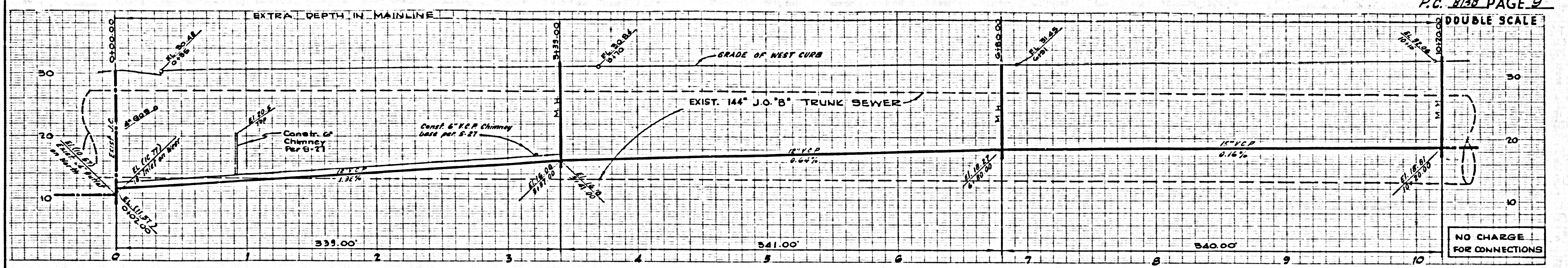


NO CHARGE FOR CONNECTIONS

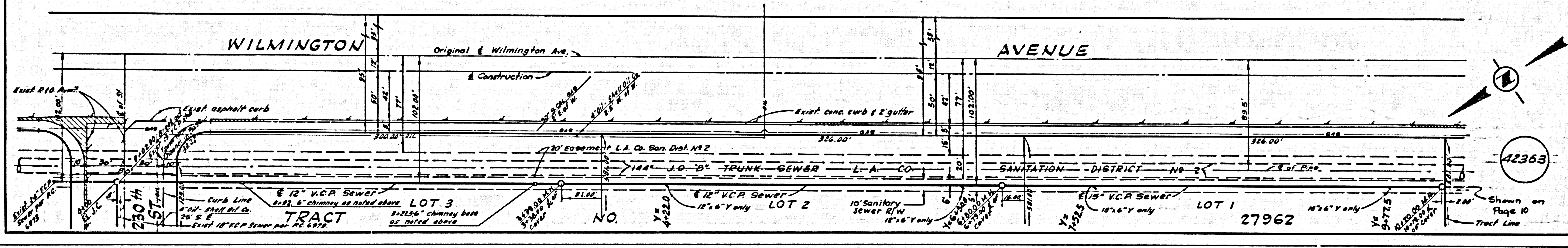
DOUBLE SCALE



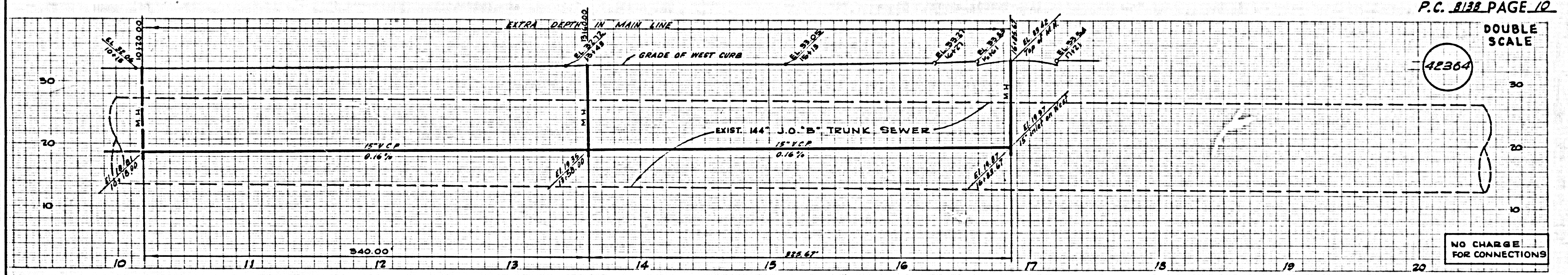
NO CHARGE FOR CONNECTIONS



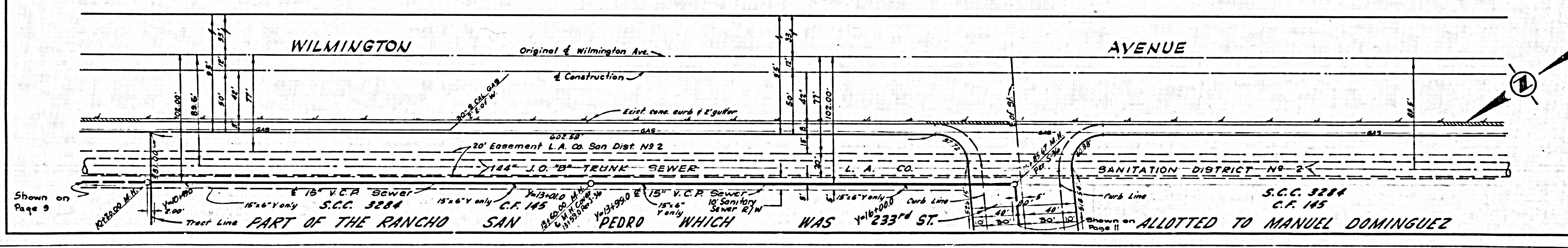
NO CHARGE FOR CONNECTIONS



NO CHARGE FOR CONNECTIONS



NO CHARGE FOR CONNECTIONS



NO CHARGE FOR CONNECTIONS

