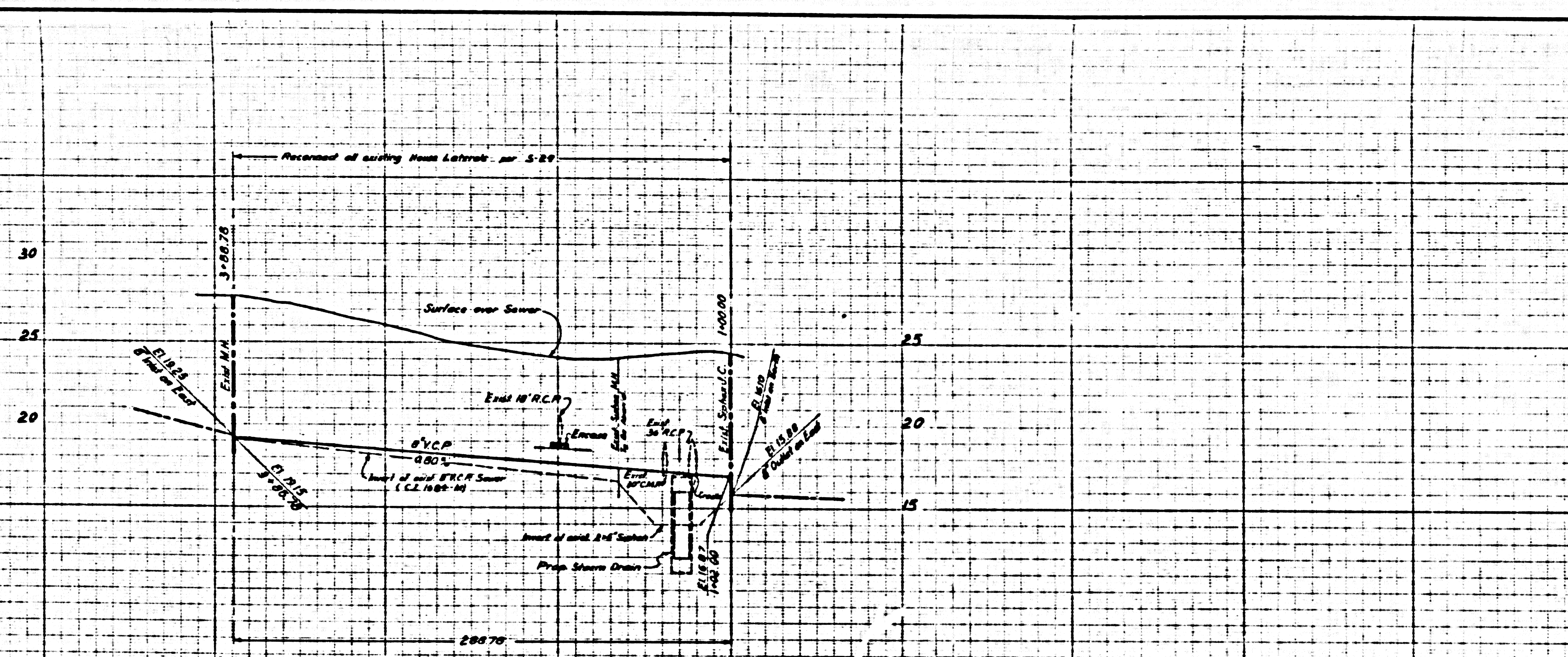


**SCALE**

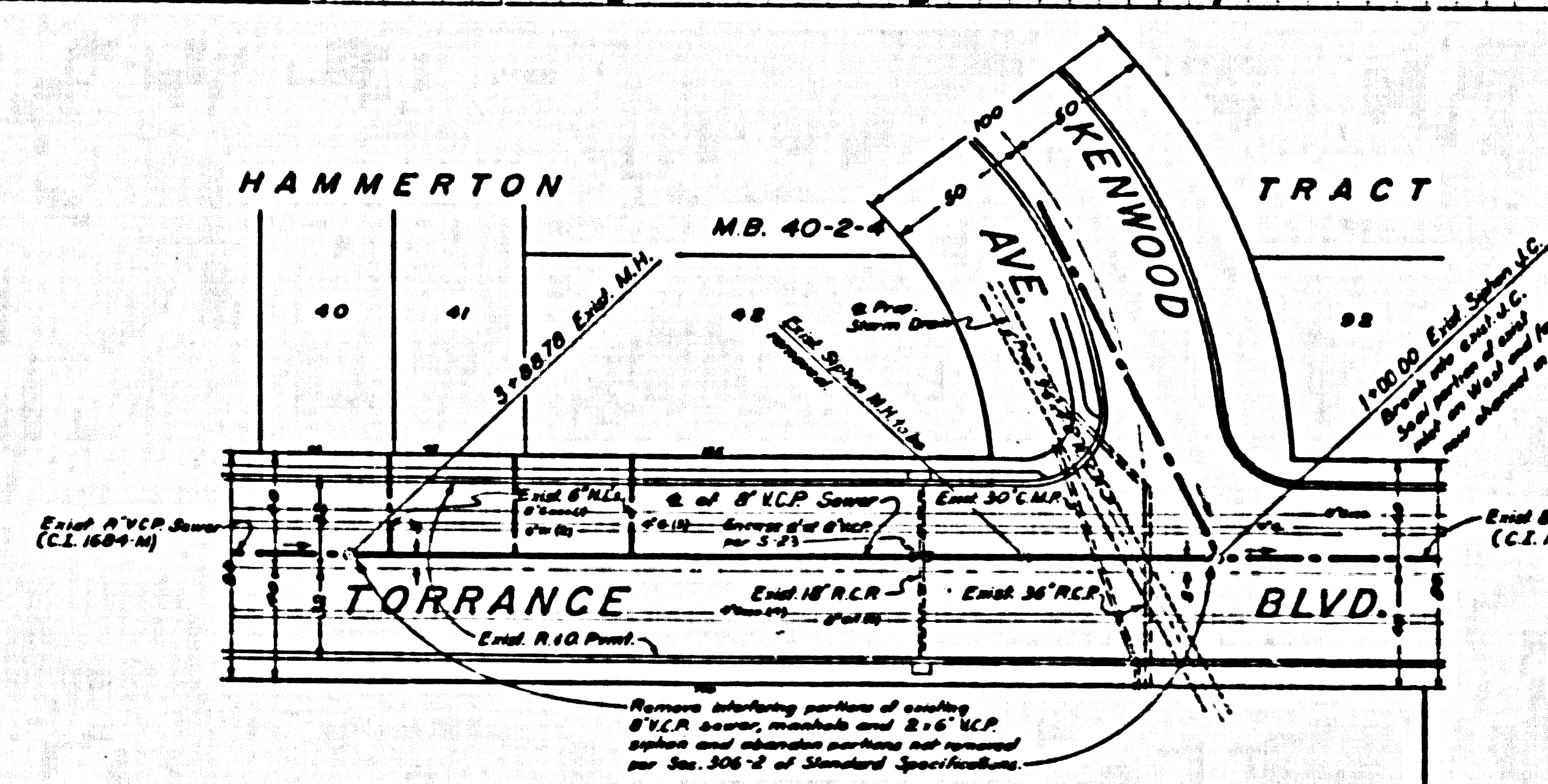
Horiz. 1" = 40'  
Vert. 1" = 4'

B.M. BY 3038 Elev. 37.371 F.B. 8772-7  
E. Mt. Normandie Ave. & Torrance Blvd.  
LACE Man. Bar Mon. in Wall w. Cover.



**GENERAL SEWER NOTES**

- Sanitary sewers shall be constructed in accordance with the Standard Specifications for Public Works Construction (hereinafter referred to as the Standard Specifications), Special Provisions and Standard Plans on file in the office of the County Engineer.
  - Sewer Pipe and appurtenances shall be abandoned in accordance with Section 306-3 of Standard Specifications.
  - Refer to Section 7-10.4.1 of the Standard Specifications, regarding Safety orders.
  - Existing sewer services and flow shall be maintained at all times.
  - All cast iron sewer pipe and joints shall be in accordance with Sections 207-9.1 (b) and 207-9.7 of the Special Provisions.
  - The Contractor shall notify the Construction Division of the County Engineer by telephone 629-4747, Ext. 81551, at least 24 hours before starting any work under this contract.
  - In addition to Standard Specifications noted above, the following latest revised Standard Plans shall apply in the construction of this project: S-1, S-2, S-3, S-5, S-6, S-13, S-15, S-17, S-21, S-22, S-23, S-25, S-26, S-29, S-30 and S-33.
- County Sanitation Districts shall be notified prior to the following as that required inspection and be as follows (Phone 629-4747):
- Commencement of construction of manhole on District trunk sewer.
  - Line into existing manhole on District trunk sewer.
  - Installation of house connections to District trunk sewer.
  - Acceptance of the project.
- NO CONNECTIONS FOR THE DISPOSAL OF INDUSTRIAL WASTES SHALL BE MADE TO SEWERS SHOWN ON THESE DRAWINGS WITHOUT WRITTEN PERMISSION FROM THE CHIEF ENGINEER AND GENERAL MANAGER OF THE COUNTY ENGINEER'S OFFICE.



Note: Existing 30" C.M.P. and 36" R.C.P. to be removed in accordance with the specifications of Bond Issue Project 685.

41742

The unshaded white areas are to be filled in with the following:  
(1) Sand fill  
(2) Excavation material  
(3) Soil  
(4) Shad fill

DRAWN BY	REVISIONS		
	MARK	DATE	DESCRIPTION

TRACT M.B. 68-1 No. 6378



APPROVED  
**JOHN D. PARKHURST**  
CHIEF ENGINEER  
CO. ENG. DIST. NO. 0  
BY *E. P. Bennett*  
CHIEF ENGINEER

PREPARED BY  
**JOHN A. LAMBIE**  
COUNTY ENGINEER  
C.C. 6140  
RECOMMENDED BY  
*Richard M. Carr*  
ASST. CHIEF ENGINEER - SANITATION GROUP

1964 STORM DRAIN BOND ISSUE  
LOS ANGELES COUNTY  
FLOOD CONTROL DISTRICT

STA. TO STA.  
**PLAN AND PROFILE**

APPROVED BY: [Signature] ASST. CHIEF ENGINEER  
APPROVED BY: [Signature] ASST. CHIEF ENGINEER

SCALE: Horiz. 1" = 40'  
Vert. 1" = 4'

DATE: [Blank] DWG. NO. [Blank]  
SHEET: [Blank] OF [Blank]