

B.M. BY 1140 ELEV. 256.745
 C&G MON. IN WELL 11/4 IN. DI. @ OR.
 NE. C/L INT. IMPERIAL HWY. AND
 SANTA GERTRUDES AVE. M.K.D.
 (AUX LA HABRA A 10 A)
 LA MIRADA QUAD. 19 65

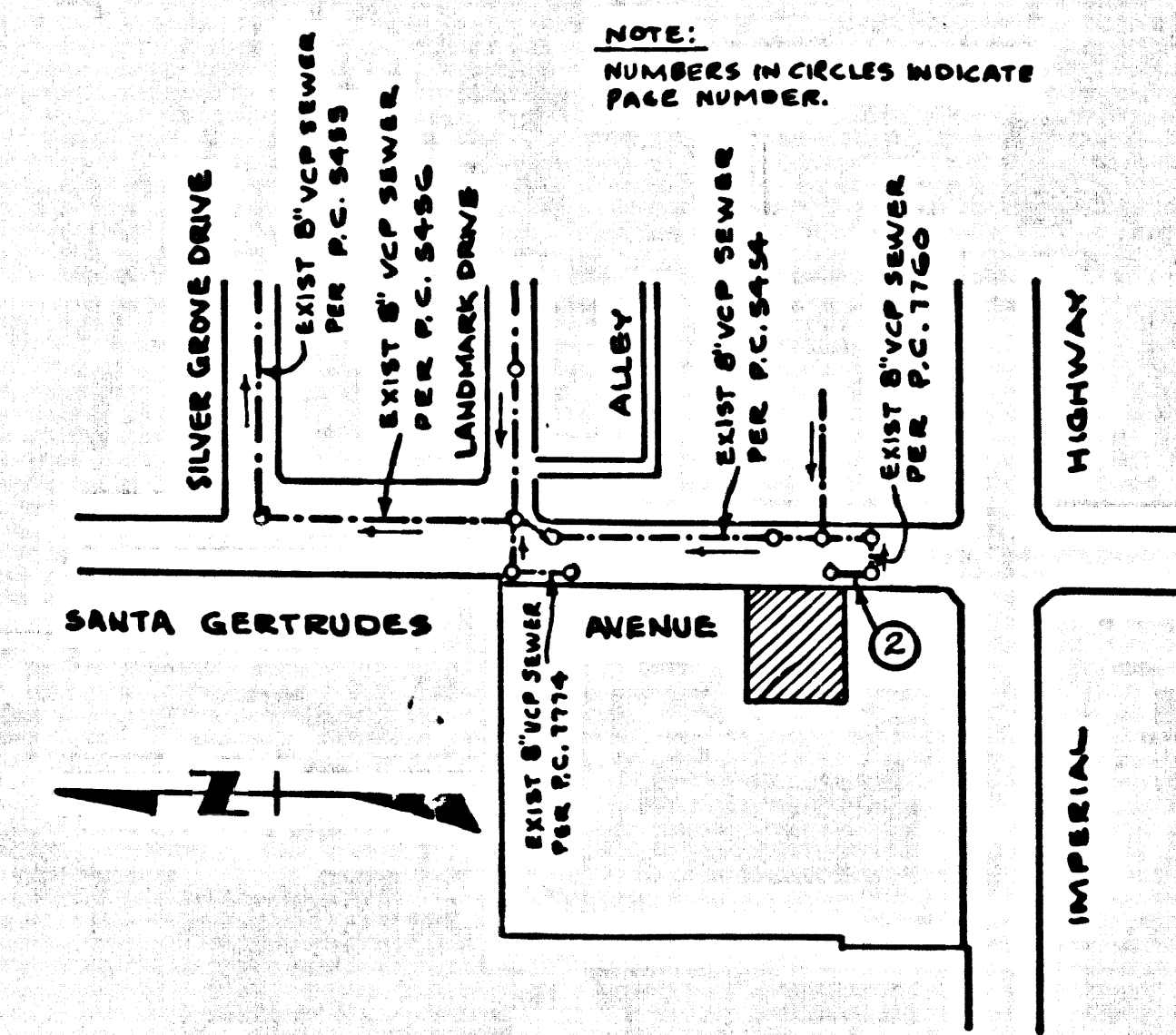
LA MIRADA BLDG. DIST. NO. 4.08

PROFILE, ALIGNMENT AND GRADE OF
 SANITARY SEWERS P.C. 8141
 TO BE CONSTRUCTED IN PAGE 1

SANTA GERTRUDES AVENUE
 PRIVATE CONTRACT NO. 8141

W.S. 34
 1 SHEET ; 2 PAGES
 SCALE: HORIZ. 1" = 40' VERT. 1" = 4' AUGUST 1968 40552
 PREPARED IN THE OFFICES OF
 ABELL & COUGHLIN - 5658 1/2 E. Beverly Blvd.
 LOS ANGELES, CALIF. 90022 TELEPHONE 723-5812
 BY: *John P. Abell*
 JOHN P. ABELL REG. C. E. NO. 2022

- County Sanitation Districts shall be notified prior to the following so that required inspection can be made (Phone 337-1025)
- (1) Commencement of construction of manhole on District trunk sewer.
 - (2) Breaking into existing manhole on District trunk sewer.
 - (3) Core drilling District trunk sewer.
 - (4) Construction of house connections to District trunk sewer.
 - (5) Acceptance of the project.



INDEX MAP P.C.8141
 SCALE: 1" = 300'
 SANTA GERTRUDES AVENUE

- NOTES:
1. HOUSE LATERALS TO BE CONSTRUCTED WITH INVERTS AT PROPERTY LINE 6 FEET BELOW CURB GRADE EXCEPT AS NOTED.
 2. PROVIDE STAKES ON THE PROPERTY LINE OR PROPERTY LINES PRODUCED AT RIGHT ANGLES TO THE SEWER LINE AT THE CENTER LINE OF EACH MANHOLE.
 3. NO REPRESENTATIVE OF THE CITY ENGINEER WILL SURVEY OR LAY OUT ANY PORTION OF THE WORK.
 4. THE PRIVATE ENGINEER SHALL FURNISH THE CITY ENGINEER WITH GRADE SHEETS AND STATIONING FOR ALL HOUSE LATERALS AND "T" OR "T" BRANCHES AND SHALL PROVIDE STAKES FOR THEM AT THEIR PROPER LOCATIONS WITH STATIONING PLAINLY MARKED. ALL HOUSE LATERALS SHALL BE CONSTRUCTED IN A STRAIGHT ALIGNMENT AT RIGHT ANGLES FROM THE MAIN LINE SEWER EXCEPT AS SHOWN ON THE PLANS. HOUSE LATERALS FROM CHIMNEYS SHALL NOT HAVE AN ANGLE OF LESS THAN 45° WITH THE MAIN LINE SEWER. ANY CHANGE IN ALIGNMENT SHALL BE REQUESTED IN WRITING BY THE PRIVATE ENGINEER.
 5. THE PRIVATE ENGINEER SHALL FURNISH THE HOUSE LATERAL 80% AT THE PROPERTY LINE BELOW THE TOP OF CURB ELEVATION FOR EACH HOUSE LATERAL ON THE GRADE SHEET.
 6. NO REVISIONS SHALL BE MADE IN THESE PLANS WITHOUT THE APPROVAL OF THE CITY ENGINEER.
 7. THE CONTRACTOR SHALL NOTIFY THE CONSTRUCTION DIVISION BY TELEPHONE, MADISON 9-0747, EXT. 8152, AT LEAST TWENTY-FOUR HOURS BEFORE STARTING ANY WORK UNDER THIS CONTRACT.
 8. ALL STRUCTURES SHALL BE EITHER BRICK MANHOLES PER S-3 OR PRECAST CONCRETE MANHOLES PER S-4 OR S-6, EXCEPT AS NOTED.
 9. "T" OR "T" BRANCHES MAY BE USED FOR CONNECTIONS TO MAINLINE SEWERS EXCEPT AS NOTED.
 10. MANHOLE TOPS IN UNIMPROVED RIGHTS OF WAY TO BE SIX INCHES ABOVE FINISHED GRADE.
 11. USE EXTRA STRENGTH PIPE. ALL PIPE IS STANDARD DEPTH EXCEPT AS NOTED.
 12. VITRIFIED CLAY PIPE JOINTS SHALL BE TYPE "D", "F", OR "G" PER STANDARD SPECIFICATIONS SECTION 306-2.
 13. IF A POWER POLE IS WITHIN THREE FEET OF THE SEWER, THE SEWER SHALL BE ENCASED, PER S-23, TWO FEET ON EACH SIDE FROM THE POINT OF INTERFERENCE.
 14. IF BURNING THE COURSE OF CONSTRUCTION IT IS DETERMINED THAT THERE IS LESS THAN FOUR FEET OF COVER OVER THE TOP OF A MAIN LINE OR HOUSE LATERAL V.C.P. SEWER WHICH IS NOT INDICATED ON THE PLANS, THE PIPE SHALL BE ENCASED PER S-23, UNLESS OTHERWISE APPROVED BY THE CITY ENGINEER.
 15. RESURFACE ALL TRENCHES WITHIN PAVED AREAS TO MEET L.A. COUNTY ROAD DEPT. OR CALIFORNIA STATE HIGHWAY REQUIREMENTS IN ACCORDANCE WITH PERMITS.
 16. SEWERS TO BE TESTED FOR LEAKAGE PER SECTION 306-2.3.7 OF THE STANDARD SPECIFICATIONS.
 17. REFER TO SECTION 7-10.4.1 OF THE STANDARD SPECIFICATIONS, REGARDING SAFETY ORDERS.
 18. ALL JOINTS BETWEEN CAST IRON PIPE AND VITRIFIED CLAY PIPE SHALL BE MADE WITH A RUBBER SLEEVE JOINT, TYPE "C" OR "D", WITH FLASHING IF NECESSARY PER STANDARD SPECIFICATIONS, SECTION 306-2.
- THE FOLLOWING LATEST REVISED STANDARD PLANS ON FILE IN THE OFFICE OF THE COUNTY ENGINEER SHALL APPLY IN THE CONSTRUCTION OF THIS PROJECT.

MINIMUM PLASTIC SAFETY REQUIREMENTS	S-2
BRICK MANHOLE	S-3
NON-REINFORCED PRECAST CONCRETE MANHOLE	S-4
REINFORCED PRECAST CONCRETE MANHOLE	S-6
MANHOLE FRAME AND COVER	S-18
STANDARD MANHOLE STEP	S-17
SETTING FOR SEWER PIPE	S-21
CRASSING AND INCLINATION	S-20
WYS OR THE SUPPORT	S-24
ALLOWABLE TRENCH WIDTHS	S-23

NO CONNECTIONS FOR THE DISPOSAL OF INDUSTRIAL WASTES SHALL BE MADE TO SEWERS SHOWN ON THESE DRAWINGS WITHOUT WRITTEN PERMISSION FROM THE CHIEF ENGINEER AND GENERAL MANAGER OF THE COUNTY SANITATION DISTRICTS.

NOTICE TO CONTRACTOR

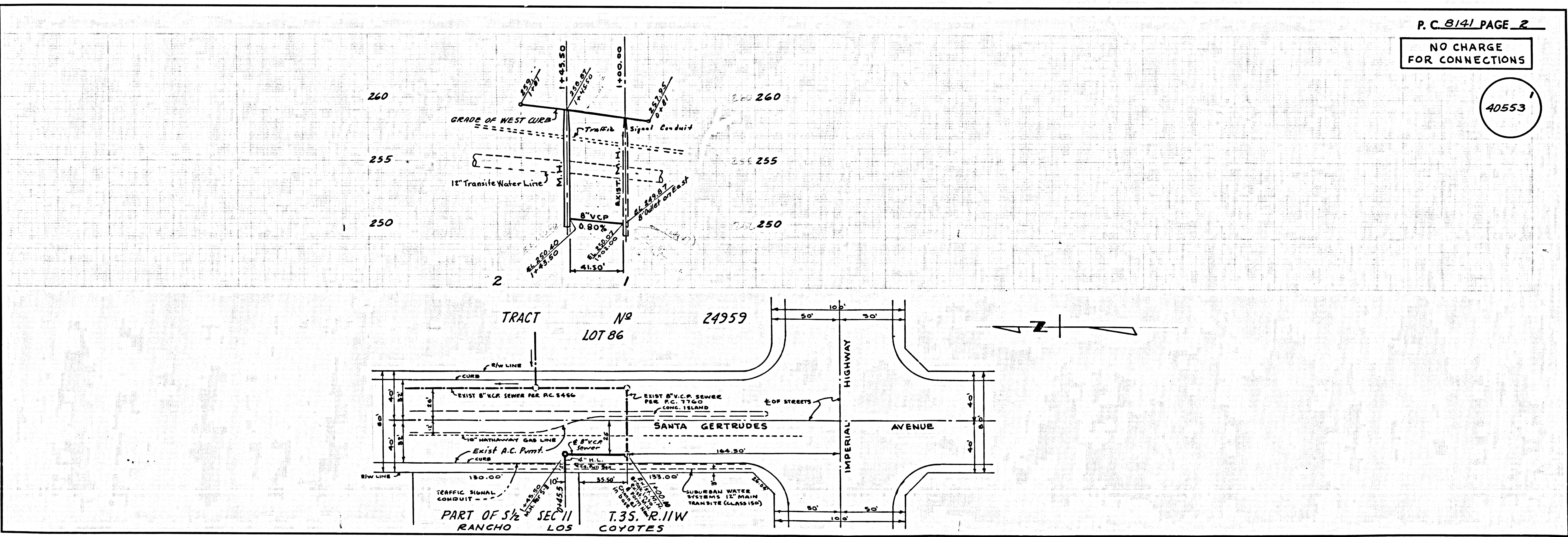
THE EXISTENCE AND LOCATION OF ANY UNDERGROUND UTILITY PIPES OR STRUCTURES SHOWN ON THESE PLANS ARE OBTAINED BY A SEARCH OF THE AVAILABLE RECORDS TO THE BEST OF MY KNOWLEDGE THERE ARE NO EXISTING UTILITIES EXCEPT AS SHOWN ON THESE PLANS.

THE CONTRACTOR IS REQUIRED TO TAKE DUE PRECAUTIONARY MEASURES TO PROTECT THE UTILITY LINES SHOWN AND ANY OTHER LINES NOT OF RECORD & NOT SHOWN ON THESE PLANS.

John P. Abell
 JOHN P. ABELL E.C.E. 5070

COLLECT CHARGES AS INDICATED

CITY OF LA MIRADA, CALIFORNIA
 JOHN A. LAMBIE CITY ENGINEER J. D. PARKMURST, CHIEF ENGINEER
 CO. SAN. DIST. NO. 4.08
 APPROVED BY: *John P. Abell* APPROVED BY: *J. D. Parkmurst*
 REGIONAL ENGINEER DATE: AUG 10 1968 OFFICE ENGINEER
 CHECKED BY: *Russell A. Jones* 8-10-68
 (SHEET)



P.C. 8141 PAGE 2
 NO CHARGE FOR CONNECTIONS

40553