

B.M. S.L. 642 ELEV. 1262.07
 ROAD DEPT. B.M. NO. SIDE CONC. BASE
 AT N.E. COR. EDISON HIGH TENSION
 TOWER #1-373 W. 31st SO. LYONS AVE.
 E 30 E. WILEY CANYON RD.
 NEWHALL QUAD. 1958

THE FOLLOWING COUNTY ENGINEER STANDARD PLANS
 APPLY TO THIS PROJECT:

LEGEND	
MINIMUM PUBLIC SAFETY REQUIREMENTS	5-1
BRICK MANHOLE	5-2
NON-REINFORCED PRECAST CONC. MANHOLE	5-3
REINFORCED PRECAST CONC. MANHOLE	5-4
MANHOLE FRAME AND COVER	5-5
MANHOLE STEP	5-15
BEDDING FOR SEWER PIPE	5-17
GRADING & ENCASUREMENT	5-21
WYE & Tee SUPPORT	5-26
ALLOWABLE TRENCH WIDTH	5-35
WYE SADDLE-HOUSE LATERAL	5-28
SPECIAL SUPPORT & PROTECTION	5-22

DOUBLE SCALE
 NEWHALL BLDG. DIST. NO. 8.2

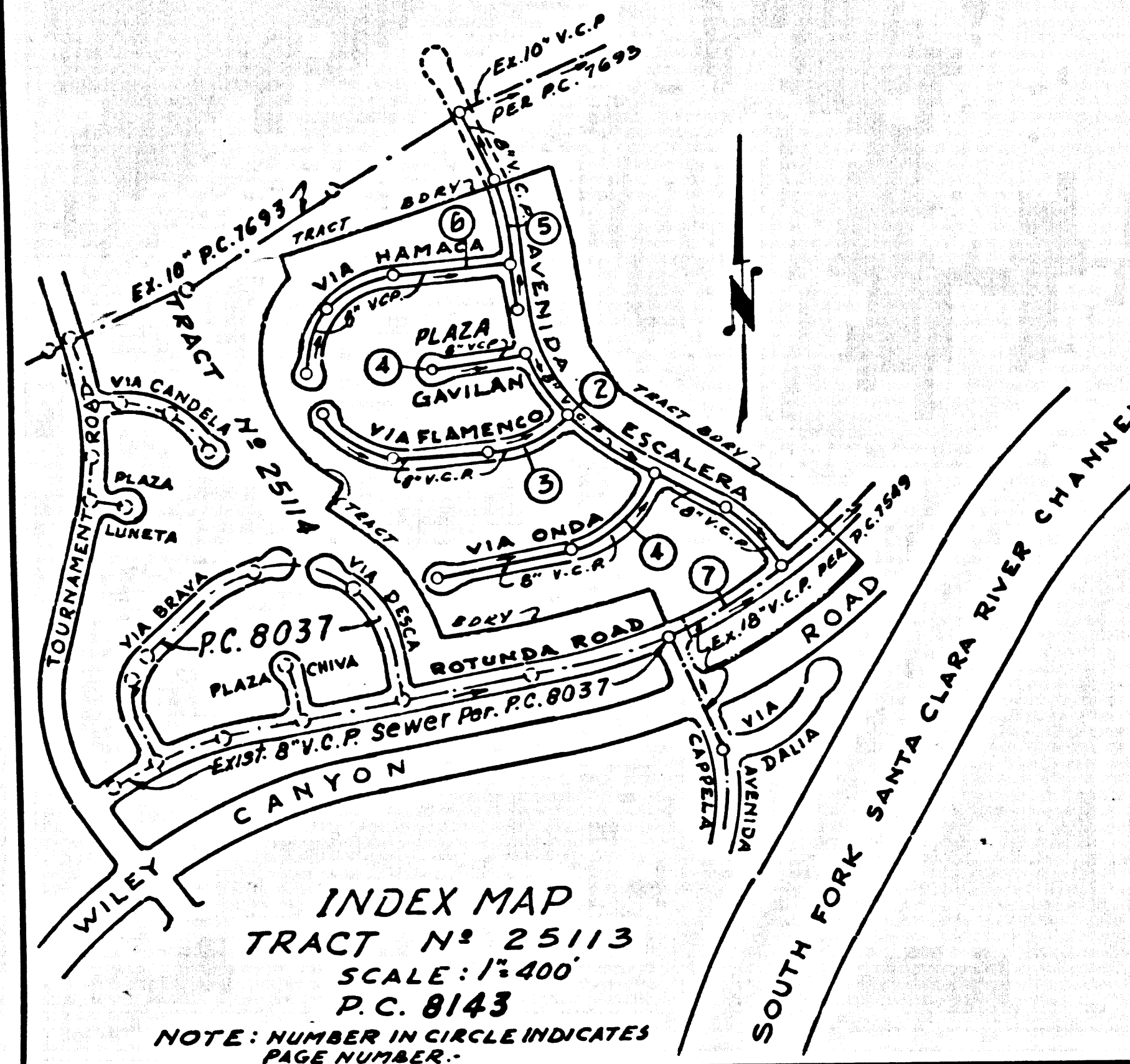
PROFILE, ALIGNMENT AND GRADE OF P.C. 8143
 SANITARY SEWERS PAGE 1
 CONSTRUCTED IN

TRACT No 25113
 PRIVATE CONTRACT NO. 8143

W.S. 63
 4 SHEETS, 7 PAGES
 SCALE: VERT. 1"=8' HORIZ. 1"=40' July, 1963
 PREPARED BY THE OFFICE OF
 VOORHEIS-TRINDLE CO.
 5919 VAN NUYS BLVD. VAN NUYS, CALIF.
 BY: *Michael J. Madden*
 REG. C. E. NO. 16748

40990

FOR LEGEND SEE PLAN NO. S-1



NO CONNECTIONS FOR THE DISPOSAL OF INDUSTRIAL WASTES SHALL BE MADE TO SEWERS SHOWN ON THESE DRAWINGS WITHOUT WRITTEN PERMISSION FROM THE CHIEF ENGINEER AND GENERAL MANAGER OF THE COUNTY SANITATION DISTRICTS.

County Sanitation Districts shall be notified prior to the following so that required inspection can be made (Phone 297-1025 - 488-8887).

Acceptance of the project.

GRADING TO BE DONE PRIOR TO SEWER CONSTRUCTION
 LOTS 95, 96, 97 ARE RESTRICTED USE FOR WALKS, TREES, PLANTING AND LANDSCAPING

- NOTES:
- PROVIDE STAKES ON THE PROPERTY LINE OR PROPERTY LINES PRODUCED AT RIGHT ANGLES TO THE SEWER LINE AT THE CENTER LINE OF EACH MANHOLE.
 - NO REPRESENTATIVE OF THE COUNTY ENGINEER WILL SURVEY OR LAY OUT ANY PORTION OF THE WORK.
 - THE PRIVATE ENGINEER SHALL FURNISH THE COUNTY ENGINEER WITH GRADE SHEETS AND STATIONING FOR ALL HOUSE LATERALS AND V.C.P. BRANCHES AND SHALL PROVIDE STAKES FOR THEM AT THEIR PROPER LOCATIONS WITH STATIONING PLAINLY MARKED. ALL HOUSE LATERALS SHALL BE CONSTRUCTED IN A STRAIGHT ALIGNMENT AT RIGHT ANGLES FROM THE MAIN LINE SEWER EXCEPT AS SHOWN ON THE PLANS. HOUSE LATERALS FROM CHIMNEYS SHALL NOT HAVE AN ANGLE OF LESS THAN 45° WITH THE MAIN LINE SEWER. ANY CHANGE IN ALIGNMENT SHALL BE REQUESTED IN WRITING BY THE PRIVATE ENGINEER.
 - THE PRIVATE ENGINEER SHALL FURNISH THE HOUSE LATERAL DEPTH AT THE PROPERTY LINE BELOW THE TOP OF CURB ELEVATION FOR EACH HOUSE LATERAL ON THE GRADE SHEET.
 - NO REVISIONS SHALL BE MADE IN THESE PLANS WITHOUT THE APPROVAL OF THE COUNTY ENGINEER.
 - THE CONTRACTOR SHALL NOTIFY THE CONSTRUCTION DIVISION BY TELEPHONE, MADISON 9-6767, EXT. 81581, AT LEAST TWENTY-FOUR HOURS BEFORE STARTING ANY WORK UNDER THIS CONTRACT.
 - ALL STRUCTURES SHALL BE EITHER BRICK MANHOLES PER S-3 OR PRECAST CONCRETE MANHOLES PER S-30S-5 EXCEPT AS NOTED.
 - USE STANDARD MANHOLE FRAMES AND COVERS, S-15.
 - MANHOLE TOPS IN UNIMPROVED RIGHTS-OF-WAY TO BE SIX INCHES ABOVE FINISHED GRADE.
 - USE EXTRA STRENGTH PIPE. ALL PIPE IS STANDARD DEPTH EXCEPT AS NOTED.
 - VITRIFIED CLAY PIPE JOINTS SHALL BE TYPE "D" "D" "D" PER STD. 466-208-B.
 - IF A POWER POLE IS WITHIN THREE FEET OF THE SEWER, THE SEWER SHALL BE ENCASED PER S-25, TWO FEET ON EACH SIDE FROM THE POINT OF INTERFERENCE.
 - IF BURING THE COURSE OF CONSTRUCTION IT IS DETERMINED THAT THERE IS LESS THAN FOUR FEET OF COVER OVER THE TOP OF A MAIN LINE OR HOUSE LATERAL V.C.P. SEWER WHICH IS NOT INDICATED ON THE PLANS, THE PIPE SHALL BE ENCASED PER S-25, UNLESS OTHERWISE APPROVED BY THE COUNTY ENGINEER.
 - HOUSE LATERALS TO BE CONSTRUCTED WITH INVERTS AT PROPERTY LINE 6 FEET BELOW CURB GRADE EXCEPT AS NOTED.
 - RESURFACE ALL TRENCHES WITHIN PAVED AREAS TO MEET L.A. COUNTY ROAD DEPT. OR CALIFORNIA STATE HIGHWAY REQUIREMENTS IN ACCORDANCE WITH PERMITS.
 - SEWERS TO BE TESTED FOR LEAKAGE PER SEC. 304-2.3.7 OF STD. SPEC.
 - REFER TO SEC. 7-10.4.1 OF THE STD. SPECIFICATIONS REGARDING SAFETY DEARES.
 - TEE OR WYE BRANCHES MAY BE USED FOR CONNECTION TO MAIN LINE SEWERS EXCEPT AS NOTED.
 - SPECIAL BACKFILL IN DESIGNATED AREAS: (A) BACKFILL TRENCH & REPLACE OTHER SOFT EXCEPT AS NOTED; (B) EXPOSED SO TO ACHIEVE THE NATURAL OR FINISHED GRADE AND MARKS SHOWN IN GRADING PLAN APPROVED FOR THIS TRACT BY THE BUILDING & SAFETY DIVISION; (C) ALL BACKFILL AND EARTH REPLACED SHALL BE COMPACTED TO THE MIN. OF 90% OF MAX. DENSITY PER ASTM STD. METHOD OF TEST D 998-57T IN PROGRESS. ACCEPTABLE CERTIFICATION OF SUCH COMPACTIONS SHALL BE SUBMITTED TO THE CIVIL DIVISION.
 - SEWER PIPE BEDDINGS SHALL COMPLY TO S-21.

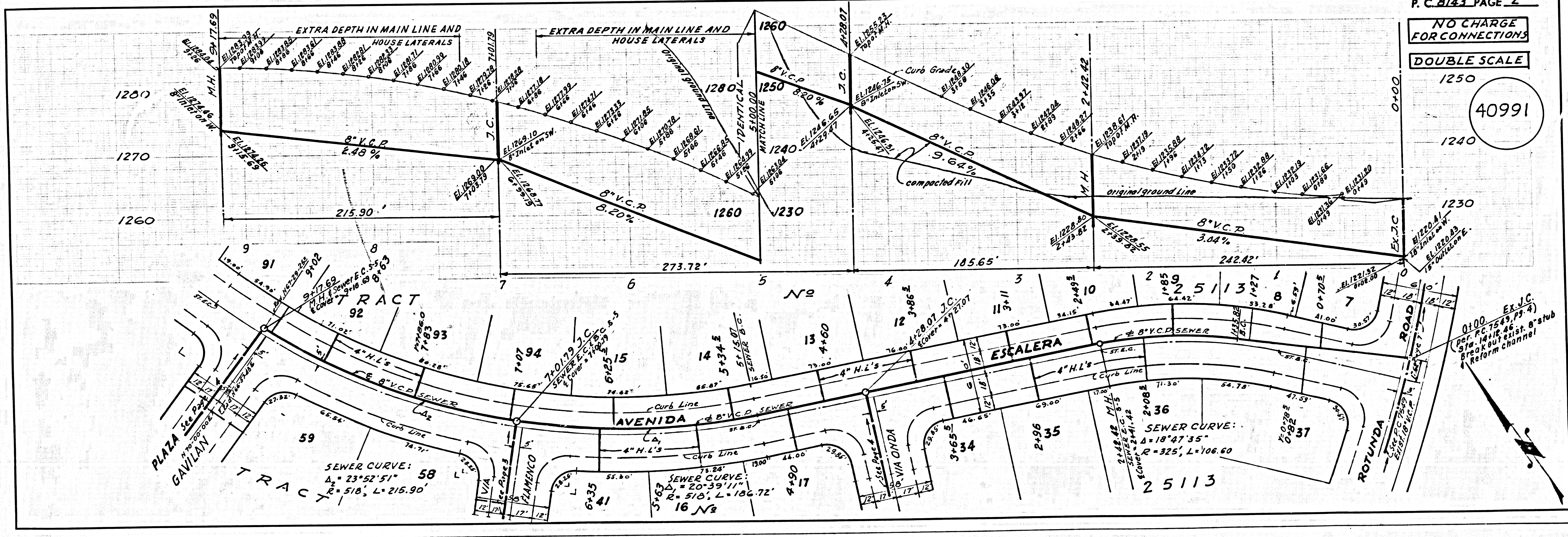
NOTICE TO CONTRACTOR
 The existence and location of any underground utility pipes or structures shown on these plans are obtained by a search of the available records. To the best of my knowledge there are no existing utilities except as shown on these plans. The contractor is required to take due precautionary measures to protect the utility lines shown and any other lines not of record or not shown on these plans.
Michael J. Madden
 REG. C. E. NO. 16748

NOTES:
 GRADES TO WHICH THIS IMPROVEMENT IS TO BE CONSTRUCTED ARE SHOWN ON PLANS AND PROFILES. GRADE POINTS FOR TOP OF CURB, CENTER LINE OF STREET, OR CENTER LINE OF ALLEYS ARE SHOWN BY CIRCLES ON PROFILES. AT ALL POINTS BETWEEN DESIGNATED POINTS THE GRADE SHALL BE ESTABLISHED SO AS TO CONFORM TO A STRAIGHT LINE DRAWN BETWEEN SAID DESIGNATED POINTS. ELEVATIONS ARE IN FEET ABOVE U.S.C. & G.S. SEA LEVEL UNLESS OTHERWISE INDICATED.
 WORK SHALL BE CONSTRUCTED ACCORDING TO STANDARD SPECIFICATIONS FOR PUBLIC WORKS CONSTRUCTION (C.D. 600-1) WHICH ARE AVAILABLE TO THE PUBLIC AT THE COUNTY ENGINEER'S OFFICE, 5919 VAN NUYS BLVD., VAN NUYS, CALIF. SPECIAL PROVISIONS DATED FEB. 15, 1963 AS AMENDED AND SHALL BE PRACTICED ONLY IN THE PRESENCE OF THE COUNTY ENGINEER OR HIS DEPUTY. THE CONTRACTOR MUST OBTAIN A PERMIT TO EXCAVATE IN COUNTY STREETS FROM THE L.A. COUNTY ROAD DEPT., DISTRICT OFFICE NO. 2, 1200 N. GARDEN ST., LOS ANGELES, CALIF. AND PAY A FEE TO THE COUNTY ENGINEER, ROOM 300, COUNTY ENGINEERING BUILDING, 5919 VAN NUYS BLVD., VAN NUYS, CALIF. THE MOST RECENT EDITION OF THE STANDARD SPECIFICATIONS FOR PUBLIC WORKS CONSTRUCTION AND SECOND PLANS. APPROVAL OF THIS PLAN BY THE COUNTY OF LOS ANGELES DOES NOT CONSTITUTE A REPRESENTATION AS TO THE ACCURACY OF THE LOCATION OF OR THE EXISTENCE OR NON-EXISTENCE OF ANY UNDERGROUND UTILITY PIPE, OR STRUCTURE WITHIN THE LIMITS OF THE PROJECT. THIS NOTICE APPLIES TO ALL PAGES. IF WORK IS TO BE DONE IN A STATE HIGHWAY, A PERMIT MUST BE OBTAINED FROM THE STATE OF CALIFORNIA, DIVISION OF HIGHWAYS, 120 SOUTH SPRING STREET, LOS ANGELES, CALIFORNIA.

COUNTY OF LOS ANGELES, CALIFORNIA
 JOHN A. LAMBIE, COUNTY ENGINEER
 J. D. PARKHURST, CHIEF ENGINEER
 CO. SAN. DIST. NO. 8.2
 APPROVED BY: *J. D. Parkhurst*
 CIVIL ENGINEER

APPROVED BY: *Linda Williams*
 CHECKED BY: *Ralph ...*
 REG. C. E. NO. 13426

J.N. 0250.02



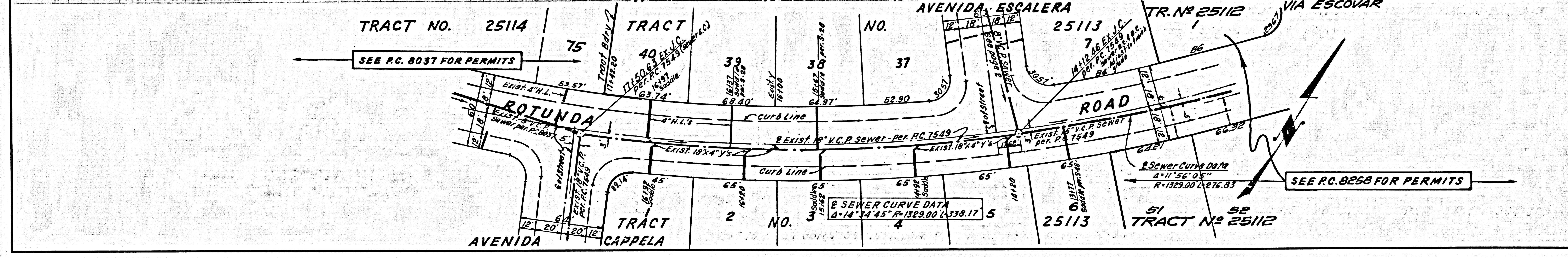
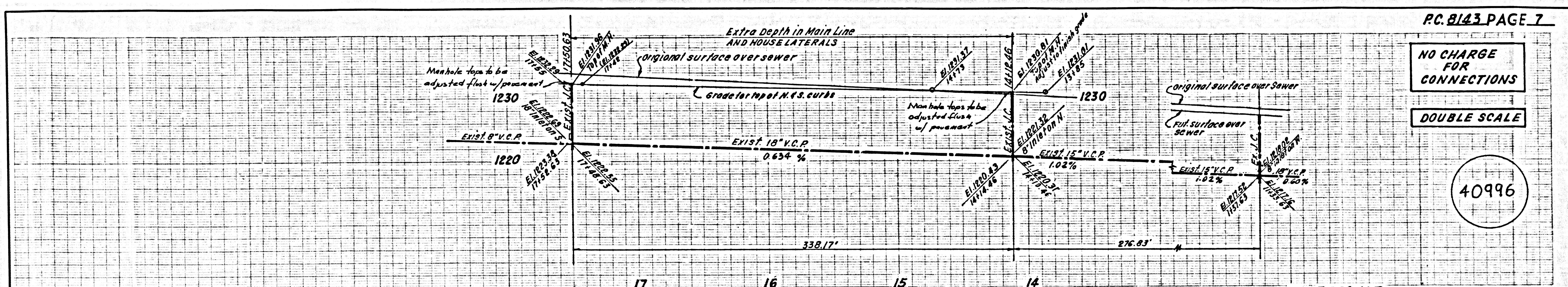
P.C. 8143 PAGE 2
 NO CHARGE FOR CONNECTIONS
 DOUBLE SCALE

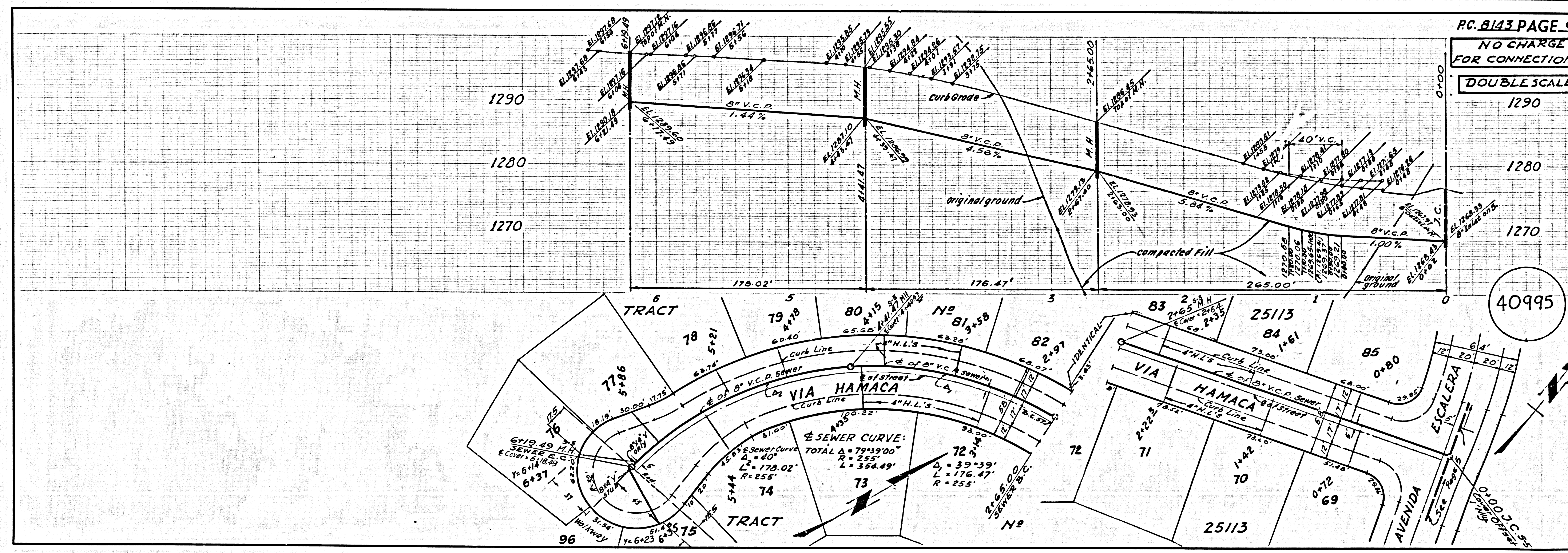
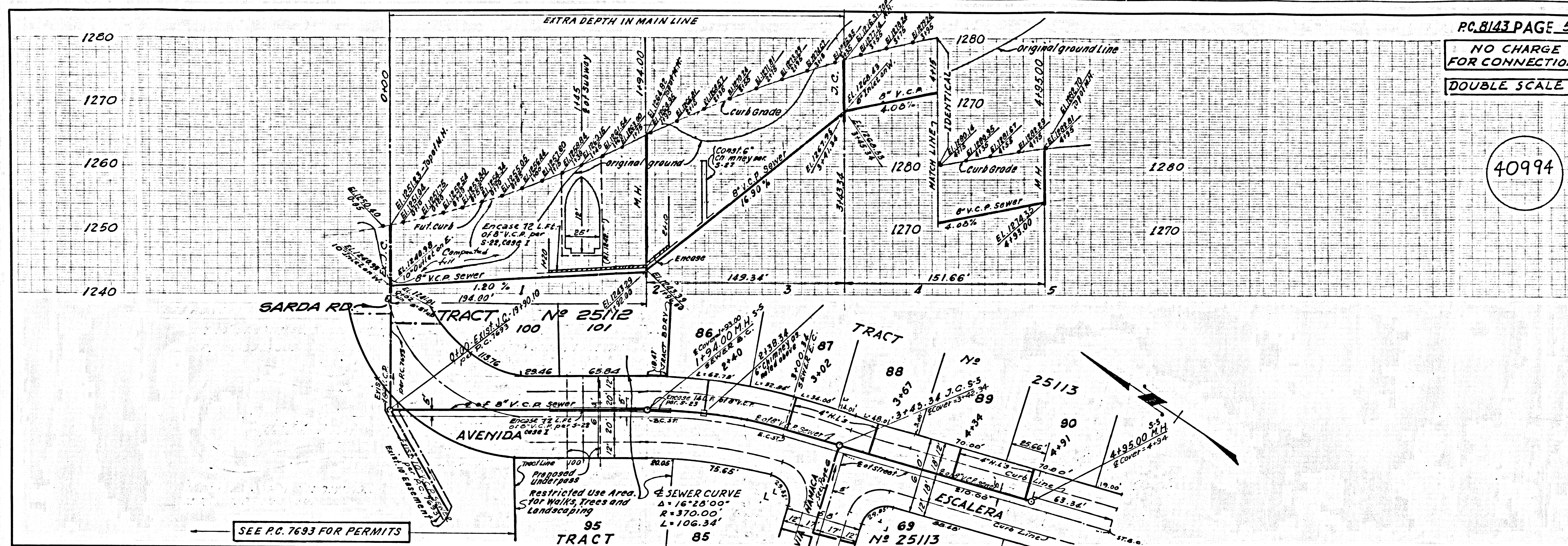
40991

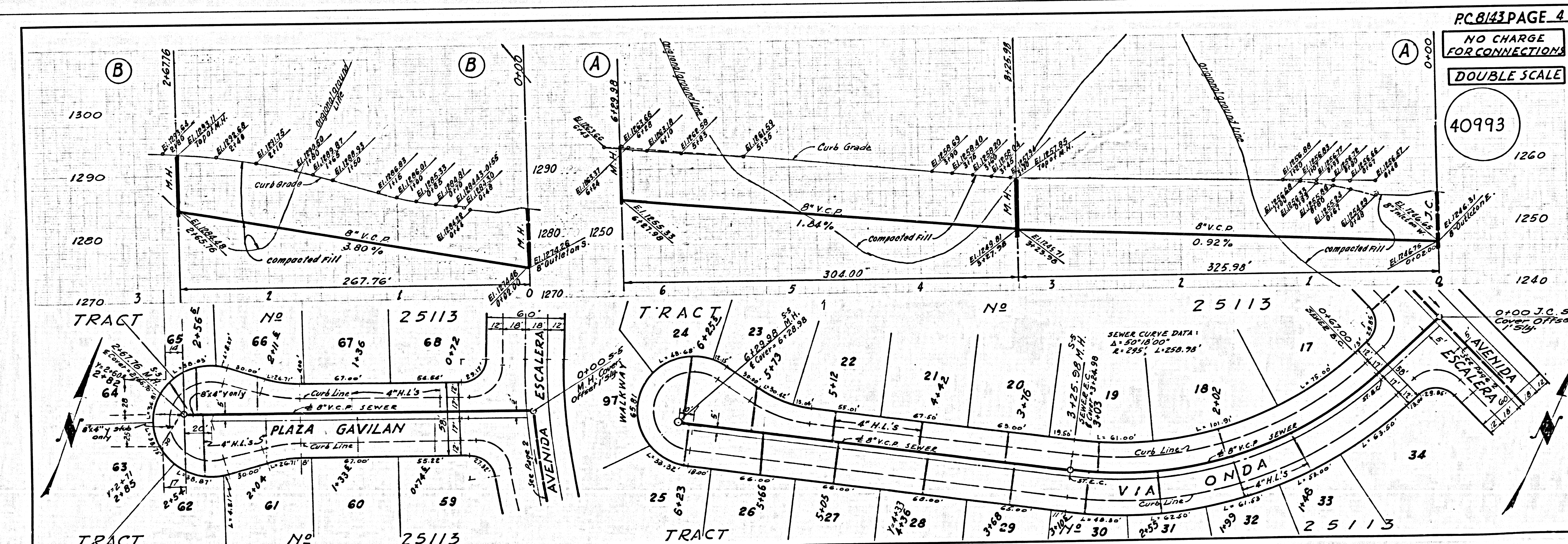
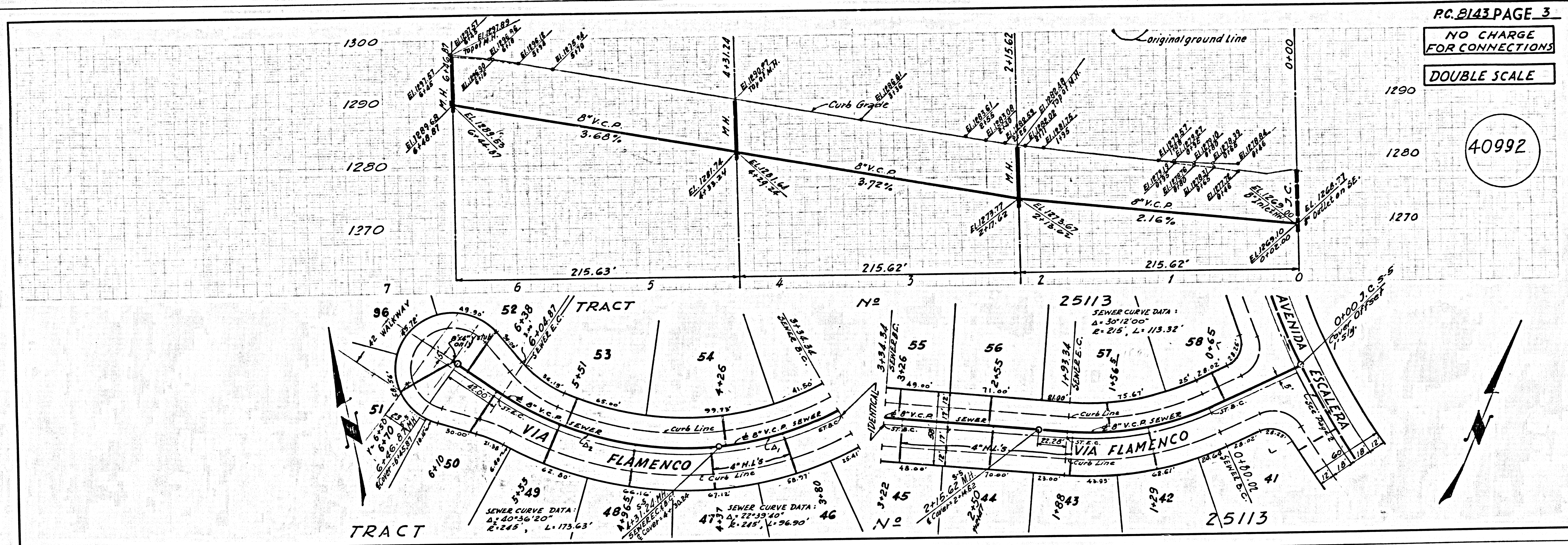
NO CHARGE FOR CONNECTIONS

DOUBLE SCALE

40996







NO CHARGE FOR CONNECTIONS

DOUBLE SCALE

40996

