

155UE NO HOUSE CONNECTION PERMITS UNTIL P.C. 8124 AND P.C. 7654-R ARE ACCEPTED

County Sanitation Districts shall be notified prior to the following so that required inspection can be made (Phone 237-1025 - 609-8897)

No connections for the disposal of industrial wastes shall be made to sewers shown on these drawings without written permission from the Chief Engineer and General Manager of the County Sanitation Districts.

THE FOLLOWING COUNTY ENGINEER STANDARD PLANS APPLY TO THIS PROJECT:

LEGEND	S-1
MIN. PUBLIC SAFETY REQUIREMENTS	S-2
BRICK MANHOLE	S-3
NON REINFORCED PRECAST CONCRETE MANHOLE	S-4
REINFORCED PRECAST CONCRETE MANHOLE	S-5
MANHOLE FRAME AND COVER	S-18
MANHOLE STEP	S-19
BEDDING FOR SEWER PIPE	S-21
CRADLING AND ENCASMENT	S-23
WYE OR TEE SUPPORT	S-24
ALLOWABLE TRENCH WIDTHS	S-25

NEWHALL BLDG. DIST. NO. 82

- NOTES:
1. PROFILE STAKES ON THE PROPERTY LINE OR PROPERTY LINES PRODUCED AT RIGHT ANGLES TO THE SEWER LINE AT THE CENTER LINE OF EACH MANHOLE.
 2. NO REPRESENTATIVE OF THE COUNTY ENGINEER WILL SURVEY OR LAY OUT ANY PORTION OF THE WORK.
 3. THE PRIVATE ENGINEER SHALL FURNISH THE COUNTY ENGINEER WITH GRADE SHEETS AND STATIONING FOR ALL HOUSE LATERALS AND 7" OR 8" MANHOLES AND SHALL PROVIDE STAKES FOR THEM AT THEIR PROPER LOCATIONS WITH STATIONING PLAINLY MARKED. ALL HOUSE LATERALS SHALL BE CONSTRUCTED IN A STRAIGHT ALIGNMENT AT RIGHT ANGLES FROM THE MAIN LINE SEWER EXCEPT AS SHOWN ON THE PLANS. HOUSE LATERALS FROM CURBSETS SHALL NOT HAVE AN ANGLE OF LESS THAN 45° WITH THE MAIN LINE SEWER. ANY CHANGE IN ALIGNMENT SHALL BE REQUESTED IN WRITING BY THE PRIVATE ENGINEER.
 4. THE PRIVATE ENGINEER SHALL FURNISH THE HOUSE LATERAL DEPTH AT THE PROPERTY LINE BELOW THE TOP OF CURB ELEVATION FOR EACH HOUSE LATERAL ON THE GRADE SHEET.
 5. NO REVISIONS SHALL BE MADE IN THESE PLANS WITHOUT THE APPROVAL OF THE COUNTY ENGINEER.
 6. THE CONTRACTOR SHALL NOTIFY THE CONSTRUCTION DIVISION BY TELEPHONE, HARBOR 9-2747, EXT. 8121, AT LEAST TWENTY-FOUR HOURS BEFORE STARTING ANY WORK UNDER THIS CONTRACT.
 7. MANHOLES SHALL BE BRICK SEWER STRUCTURES PER S-3. PRECAST CONCRETE MANHOLES PER S-4 OR S-5 MAY BE USED AS AN ALTERNATE IN LOCATIONS APPROVED BY THE COUNTY ENGINEER.
 8. 7" OR 8" MANHOLES MAY BE USED FOR CONNECTIONS TO MAINLINE SEWERS EXCEPT AS NOTED.
 9. MANHOLES FOR NON-UNIMPROVED HOUSES OR WAYS TO BE 26-INCHES ABOVE FINISHED GRADE.
 10. USE EXTRA STRENGTH PIPE ALL PIPE IS STANDARD DEPTH EXCEPT AS NOTED.
 11. WYPOREO CLAY PIPE JOINTS SHALL BE TYPE "D" "F" OR "B" PER STANDARD SPEC. SEC. 208-2.
 12. IF A POWER POLE IS WITHIN THREE FEET OF THE SEWER, THE SEWER SHALL BE ENCASED, PER S-23, TWO FEET ON EACH SIDE FROM THE POINT OF INTERFERENCE.
 13. IF DURING THE COURSE OF CONSTRUCTION IT IS DETERMINED THAT THERE IS LESS THAN FOUR FEET OF COVER OVER THE TOP OF A MAIN LINE OR HOUSE LATERAL V.C.P. SEWER WHICH IS NOT INDICATED ON THE PLANS, THE PIPE SHALL BE ENCASED PER S-23, UNLESS OTHERWISE APPROVED BY THE COUNTY ENGINEER.
 14. HOUSE LATERALS TO BE CONSTRUCTED WITH INVERTS AT PROPERTY LINE 6 FEET BELOW CURB GRADE EXCEPT AS NOTED.
 15. REINFORCE ALL TRENCHES WITHIN PAVED AREAS TO MEET L.A. COUNTY ROAD DEPT. OR CALIFORNIA STATE HIGHWAY REQUIREMENTS IN ACCORDANCE WITH PERMITS.
 16. SEWERS TO BE TESTED FOR LEAKAGE PER SEC. 208-2.8.7 OF STANDARD SPEC.
 17. REFER TO SECT. 7-10.4.1 OF THE STANDARD SPECIFICATIONS REGARDING SAFETY ORDERS.
 18. SEWER PIPE BEDDING SHALL COMPLY TO S-21.
 19. ALL JOINTS BETWEEN CAST IRON PIPE AND VYPOREO CLAY PIPE SHALL BE MADE WITH A RUBBER SLEEVE JOINT, TYPE "C" OR "D", (WITH BUSHING, IF NECESSARY) PER STANDARD SPECIFICATIONS, SEC. 208-2.

NOTICE TO CONTRACTOR

The existence and location of any underground utility pipes or structures shown on these plans are obtained by a search of the available records. The contractor is required to take due precautionary measures to protect the utility lines shown and any other lines not of record or not shown on these plans.

E.H. McManis
REG. 4513

PROFILE, ALIGNMENT AND GRADE OF
SANITARY SEWERS PAGE 1
CONSTRUCTED IN
TRACT NO. 26894

PRIVATE CONTRACT NO. 8144

INDEX ~~W.S. 82~~
2 SHEETS, 4 PAGES
SCALE: VERT. 1" = 4' HORIZ. 1" = 40'
DECEMBER 1968
PREPARED IN THE OFFICE OF
VOORHEIS-TRINDLE CO.
5919 Van Nuys Blvd., Van Nuys, California
By: *E.H. McManis*
REG. C. E. NO. 2513

FOR LEGEND SEE PLAN NO. S-1

NOTE: GRADES TO WHICH THIS IMPROVEMENT IS TO BE CONSTRUCTED ARE SHOWN ON PLANS AND PROFILES. GRADE POINTS FOR TOP OF CURBS, CENTER LINE OF STREETS, OR CENTER LINE OF ALLEYS ARE SHOWN BY CIRCLES ON PROFILES. AT ALL POINTS BETWEEN DESIGNATED POINTS THE GRADE SHALL BE ESTABLISHED SO AS TO CONFORM TO A STRAIGHT LINE DRAWN BETWEEN SAID DESIGNATED POINTS. ELEVATIONS ARE IN FEET ABOVE U.S.C. & G.S. MEAN LEVEL DATUM OF 1929.

WORK SHALL BE CONSTRUCTED ACCORDING TO STANDARD SPECIFICATIONS FOR PUBLIC WORKS CONSTRUCTION AND COUNTY ENGINEER SPECIAL PROVISIONS DATED JAN. 21, 1965, AS REVISED AND SHALL BE PROCEEDED ONLY IN THE PRESENCE OF THE COUNTY ENGINEER. BEFORE WORK CAN BE STARTED, THE CONTRACTOR MUST OBTAIN A PERMIT TO EXCAVATE IN COUNTY STREETS FROM THE L.A. COUNTY ROAD DEPT., DISTRICT OFFICE IN VAN NUYS, CALIF. AND PAY A FEE TO THE COUNTY ENGINEER, ROOM 300, COUNTY ENGINEERING BUILDING, 100 WEST SECOND STREET, LOS ANGELES, CALIF. REGIONAL OFFICE, SUFFICIENT TO COVER THE COST OF CONSTRUCTION INSPECTION AND RECORD PLANS.

APPROVAL OF THIS PLAN BY THE COUNTY OF LOS ANGELES DOES NOT CONSTITUTE A REPRESENTATION AS TO THE ACCURACY OF THE LOCATION OF OR THE EXISTENCE OR NON-EXISTENCE OF ANY UNDERGROUND UTILITY PIPE, OR STRUCTURE WITHIN THE LIMITS OF THE PROJECT. THIS NOTE APPLIES TO ALL PAGES.

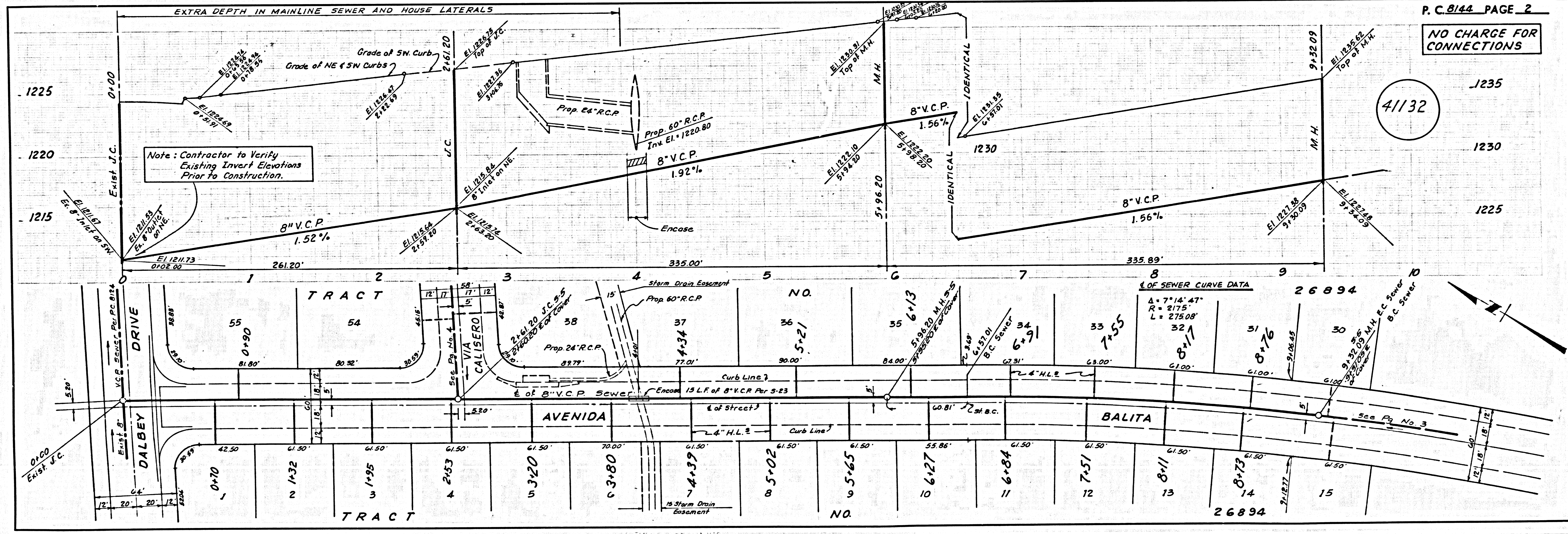
IF WORK IS TO BE DONE IN A STATE HIGHWAY, A PERMIT MUST BE OBTAINED FROM THE STATE OF CALIFORNIA, DIVISION OF HIGHWAYS, THE SOUTH SPRING STREET, LOS ANGELES, CALIFORNIA.

COUNTY OF LOS ANGELES, CALIFORNIA
JOHN A. LAMBIE, COUNTY ENGINEER
APPROVED BY: *[Signature]* REGIONAL ENGINEER

J. D. PARKHURST, CHIEF ENGINEER
APPROVED BY: *[Signature]* OFFICE ENGINEER

CHECKED BY: *Ralph Adams* 1/10/69
REG. C. E. NO. 13926

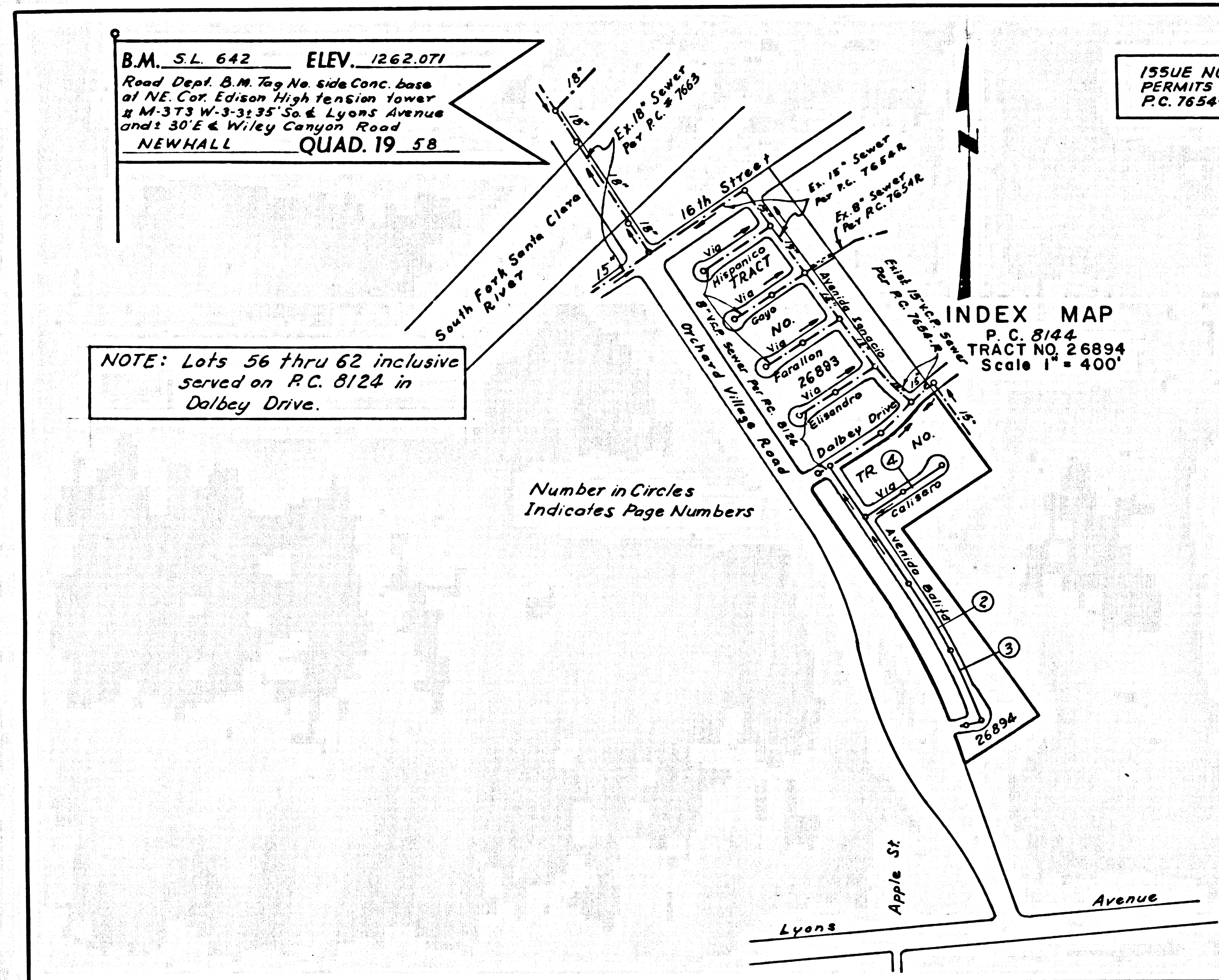
J. N. 025002



P. C. 8144 PAGE 2

NO CHARGE FOR CONNECTIONS

41132



ISSUE NO HOUSE CONNECTION PERMITS UNTIL P.C. 8144 AND P.C. 7654-R ARE ACCEPTED

County Sanitation Districts shall be notified prior to the following so that required inspection can be made (Phone 337-1025 - 666-8097)

Acceptance of the project:
No connections for the disposal of industrial wastes shall be made to sewers shown on these drawings without written permission from the Chief Engineer and General Manager of the County Sanitation Districts.

THE FOLLOWING COUNTY ENGINEER STANDARD PLANS APPLY TO THIS PROJECT:

LEGEND	3-1
MIN. PUBLIC SAFETY REQUIREMENTS	3-2
BRICK MANHOLE	3-3
NON REINFORCED PRECAST CONCRETE MANHOLE	3-4
REINFORCED PRECAST CONCRETE MANHOLE	3-5
MANHOLE FRAMES AND COVER	3-15
MANHOLE STEP	3-17
BEDDING FOR SEWER PIPE	3-21
CRADLING AND ENCASUREMENT	3-23
PIPE OR TRENCH SUPPORT	3-25
ALLOWABLE TRENCH WIDTHS	3-25

NEWHALL BLDG. DIST. NO. 8.2

- NOTES:
- PROVIDE STAKES ON THE PROPERTY LINE OR PROPERTY LINES PRODUCED AT RIGHT ANGLES TO THE SEWER LINE AT THE CENTER LINE OF EACH MANHOLE.
 - NO REPRESENTATIVE OF THE COUNTY ENGINEER WILL SURVEY OR LAY OUT ANY PORTION OF THE WORK.
 - THE PRIVATE ENGINEER SHALL FURNISH THE COUNTY ENGINEER WITH GRADE SHEETS AND STATIONING FOR ALL HOUSE LATERALS AND "T" OR "Y" BRANCHES AND SHALL PROVIDE STAKES FOR THEM AT THEIR PROPER LOCATIONS WITH STATIONING PLAINLY MARKED. ALL HOUSE LATERALS SHALL BE CONSTRUCTED IN A STRAIGHT ALIGNMENT AT RIGHT ANGLES FROM THE MAIN LINE SEWER EXCEPT AS SHOWN ON THE PLANS. HOUSE LATERALS FROM CHIMNEYS SHALL NOT HAVE AN ANGLE OF LESS THAN 45° WITH THE MAIN LINE SEWER. ANY CHANGE IN ALIGNMENT SHALL BE REQUESTED IN WRITING BY THE PRIVATE ENGINEER.
 - THE PRIVATE ENGINEER SHALL FURNISH THE HOUSE LATERAL DEPTH AT THE PROPERTY LINE BELOW THE TOP OF CURB ELEVATION FOR EACH HOUSE LATERAL ON THE GRADE SHEET.
 - NO REVISIONS SHALL BE MADE IN THESE PLANS WITHOUT THE APPROVAL OF THE COUNTY ENGINEER.
 - THE CONTRACTOR SHALL NOTIFY THE CONSTRUCTION DIVISION BY TELEPHONE, MADISON 9-0747, EXT. 8151, AT LEAST TWENTY-FOUR HOURS BEFORE STARTING ANY WORK UNDER THIS CONTRACT.
 - MANHOLES SHALL BE 36" O.C. SEWER STRUCTURES PER S.E. PRECAST CONCRETE MANHOLES PER 3-4 OR 3-5 MAY BE USED AS AN ALTERNATE IN LOCATIONS APPROVED BY THE COUNTY ENGINEER.
 - "T" OR "Y" BRANCHES MAY BE USED FOR CONNECTIONS TO MAINLINE SEWERS EXCEPT AS NOTED.
 - MANHOLES SHALL BE UNIMPROVED RIGHTS-OF-WAY TO BE 36" INCHES ABOVE FINISHED GRADE.
 - USE EXTRA STRENGTH PIPE, ALL PIPE IS STANDARD DEPTH EXCEPT AS NOTED.
 - WRAPPED CLAY PIPE JOINTS SHALL BE TYPE "D" "P" OR "V" PER STANDARD SPEC. SEC. 203-E.
 - IF A POWER POLE IS WITHIN THREE FEET OF THE SEWER, THE SEWER SHALL BE ENCASED, PER 3-23, TWO FEET ON EACH SIDE FROM THE POINT OF INTERFERENCE.
 - IF DURING THE COURSE OF CONSTRUCTION IT IS DETERMINED THAT THERE IS LESS THAN FOUR FEET OF COVER OVER THE TOP OF A MAIN LINE OR HOUSE LATERAL V.C.P. SEWER WHICH IS NOT INDICATED ON THE PLANS, THE PIPE SHALL BE ENCASED PER 3-23, UNLESS OTHERWISE APPROVED BY THE COUNTY ENGINEER.
 - HOUSE LATERALS TO BE CONSTRUCTED WITH INVERTS AT PROPERTY LINE 4 FEET BELOW CURB GRADE EXCEPT AS NOTED.
 - RESURFACE ALL TRENCHES WITHIN PAVED AREAS TO MEET L.A. COUNTY ROAD DEPT. OR CALIFORNIA STATE HIGHWAY REQUIREMENTS IN ACCORDANCE WITH PERMITS.
 - SEWERS TO BE TESTED FOR LEAKAGE PER SEC. 206-2.3.7 OF STANDARD SPECS.
 - REFER TO SPEC. 7-04.1 ON THE STANDARD SPECIFICATIONS REGARDING SAFETY ORDER.
 - SEWER PIPE BEDDING SHALL CONFORM TO 3-21.
 - ALL JOINTS BETWEEN CAST-IRON PIPE AND WRAPPED CLAY PIPE SHALL BE MADE WITH A RUBBER SLEEVES JOINT, TYPE "C" OR "D", (WITH BUSHING IF NECESSARY) PER STANDARD SPECIFICATIONS, SEC. 203-E.

NOTICE TO CONTRACTOR
The existence and location of any underground utility pipes or structures shown on these plans are obtained by a search of the available records to the best of my knowledge there are no existing utilities except as shown on these plans. The contractor is required to take due precautionary measures to protect the utility lines shown and any other lines not of record or not shown on these plans.
E.H. McQuinn
REG. 9515

CONSTRUCTED IN
TRACT NO. 26894

PRIVATE CONTRACT NO. 8144

INDEX 1 - 41131
2 SHEETS, 4 PAGES

SCALE: VERT. 1" = 4' HORIZ. 1" = 40'
DECEMBER 1968

PREPARED IN THE OFFICE OF
VOORHEIS-TRINDLE CO.
5919 Von Nuyss Blvd., Van Nuys, California
REG. C. E. NO. 2513

FOR LEGEND SEE PLAN NO. 3-1

NOTES:
GRADE TO WHICH THE IMPROVEMENT IS TO BE CONSTRUCTED ARE SHOWN ON PLANS AND PROFILES. GRADE POINTS FOR TOP OF CURBS, CENTER LINE OF STREETS, OR CENTER LINE OF ALLEYS ARE SHOWN BY CIRCLES ON PROFILES. AT ALL POINTS BETWEEN DESIGNATED POINTS THE GRADE SHALL BE ESTABLISHED SO AS TO CONFORM TO A STRAIGHT LINE DRAWN BETWEEN SAID DESIGNATED POINTS. ELEVATIONS ARE IN FEET ABOVE U.S.C. & G.S. SEA LEVEL DATUM OF 1929.
THE ENGINEER AND THE BUREAU ENGINEER ARE HEREBY MADE A PART OF THE IMPROVEMENTS.
WORK SHALL BE CONSTRUCTED ACCORDING TO STANDARD SPECIFICATIONS FOR PUBLIC WORKS CONSTRUCTION AND COUNTY ENGINEER SPECIAL PROVISIONS DATED JAN. 1, 1968, AS REVISED AND SHALL BE PROSECUTED ONLY IN THE PRESENCE OF THE COUNTY ENGINEER. BEFORE WORK CAN BE STARTED, THE CONTRACTOR MUST OBTAIN A PERMIT TO EXCAVATE IN COUNTY STREETS FROM THE L.A. COUNTY ROAD DEPT., DISTRICT OFFICE NO. 1, AND PAY A FEE TO THE COUNTY ENGINEER, ROOM 308, COUNTY ENGINEER'S BUILDING, 128 WEST SECOND STREET, LOS ANGELES, CALIFORNIA.
APPROVAL OF THIS PLAN BY THE COUNTY OF LOS ANGELES DOES NOT CONSTITUTE A REPRESENTATION AS TO THE ACCURACY OF THE LOCATION OR OF THE EXISTENCE OF ANY UNDERGROUND UTILITY PIPE, OR STRUCTURE WITHIN THE LIMITS OF THIS PROJECT. THIS NOTE APPLIES TO ALL PAGES.
IF WORK IS TO BE DONE IN A STATE HIGHWAY, A PERMIT MUST BE OBTAINED FROM THE STATE OF CALIFORNIA, DIVISION OF HIGHWAY, 128 SOUTH SPRING STREET, LOS ANGELES, CALIFORNIA.

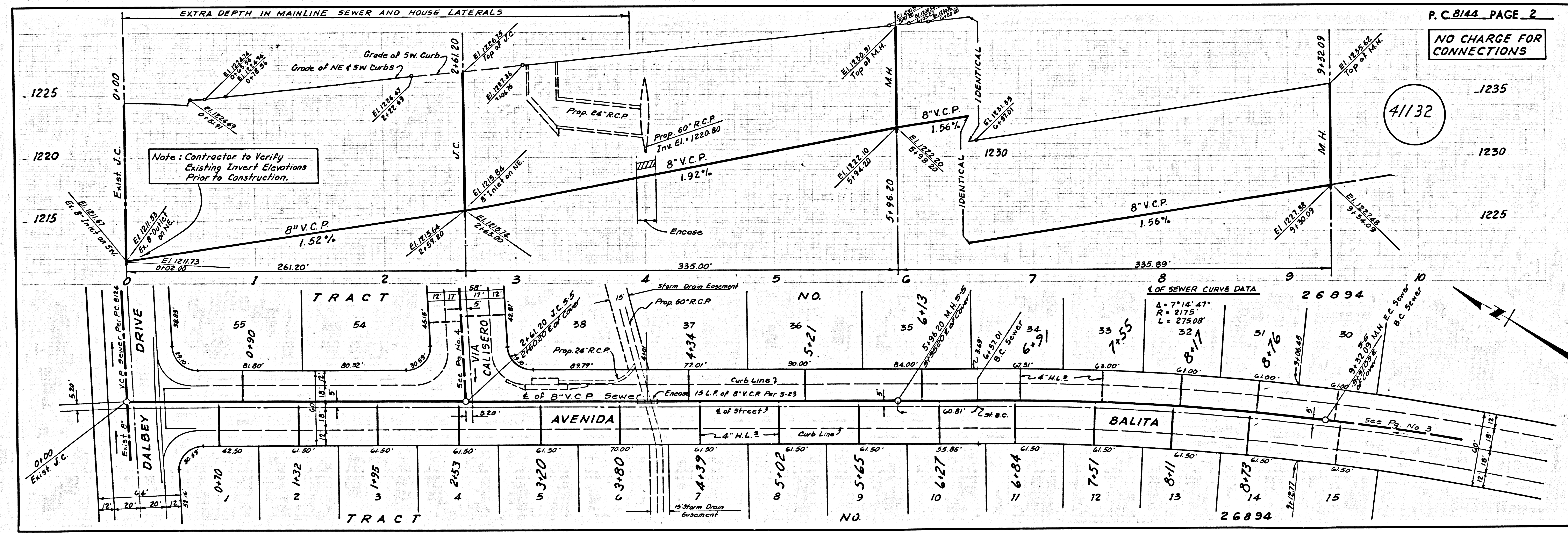
COUNTY OF LOS ANGELES, CALIFORNIA
JOHN A. LAMBIE, COUNTY ENGINEER J. D. PARKHURST, CHIEF ENGINEER
CO. SAN. DIST. NO. 82

APPROVED BY *[Signature]* REGIONAL ENGINEER

APPROVED BY *[Signature]* OFFICE ENGINEER

DESIGNED BY *[Signature]*
CHECKED BY *[Signature]* 1/10/69
REG. C. E. NO. 13406

J.N. 0250.02



41132

