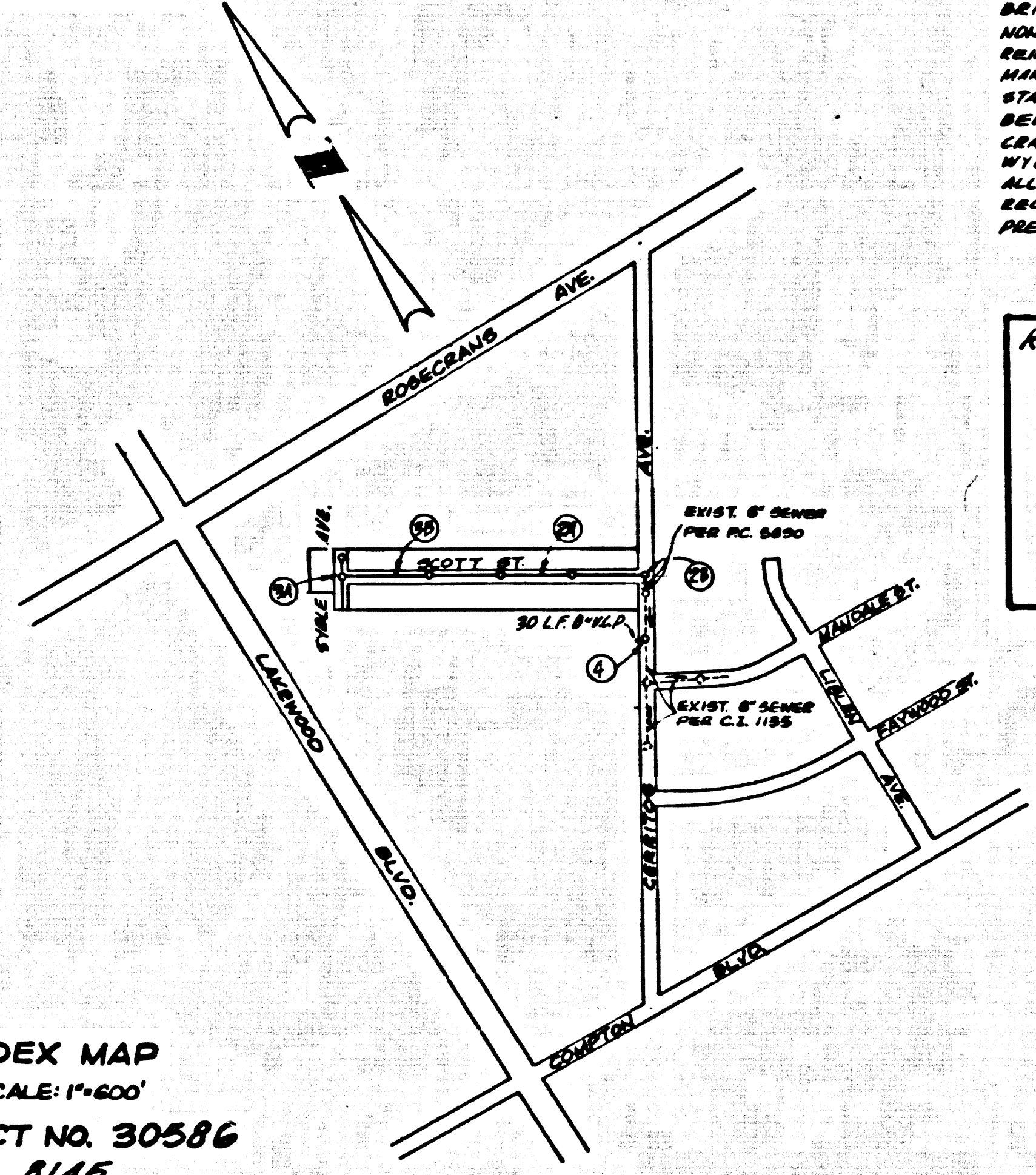


B.M. BY 2009 ELEV. 70.473
 TAG IN WEST CORNER 8' SOUTH OF C.C.R. @
 S.W. CORNER LINDWOOD BLVD. (CONTIGUOUS)
 BLVD. 36' SOUTH OF 1/2" WEST OF E.M.T.
 NODWALK QUAD. 1965



INDEX MAP
 SCALE: 1"=600'
 TRACT NO. 30586
 P.C. 8145

THE FOLLOWING LATEST REVISED STANDARD PLANS ON FILE IN THE OFFICE OF THE CITY ENGINEER SHALL APPLY IN THE CONSTRUCTION OF THIS PROJECT

LEGEND	S-1
MINIMUM PUBLIC SAFETY REQUIREMENTS	S-2
BRICK MANHOLE	S-3
NON-REINFORCED PRECAST CONCRETE MANHOLE	S-4
REINFORCED PRECAST CONCRETE MANHOLE	S-5
MANHOLE FRAMES AND COVERS	S-6
STANDARD MANHOLE STEP	S-7
DESIGNS FOR SEWER PIPE	S-8
LOADING AND ENCASMENT	S-9
WYS OR TEE SUPPORT	S-10
ALLOWABLE TRENCH WIDTHS	S-11
RECTANGULAR SHALLOW MANHOLE	S-12
PRECAST CONCRETE SHALLOW MANHOLE	S-13

REVISION NO. 1
 L. A. ROSS J.C. FOR FUTURE STREET PAV. 4.
 REPRODUCTION BY
Donald D. Greek
 APPROVED: *Donald D. Greek* 4/16/68
 REC 1291

NO CONNECTIONS FOR THE DISPOSAL OF INDUSTRIAL WASTES SHALL BE MADE TO SEWERS SHOWN ON THESE DRAWINGS WITHOUT WRITTEN PERMISSION FROM THE CHIEF ENGINEER AND GENERAL MANAGER OF THE COUNTY SANITATION DISTRICTS.

County Sanitation Districts shall be notified prior to the following so that required inspection can be made (Phone 332-2288 - 636-3097)

Acceptance of the project.

BELLFLOWER BLDG. DIST. NO. 4.07

- NOTES
1. PROVIDE STAKES ON THE PROPERTY LINE OR PROPERTY LINES PRODUCED AT RIGHT ANGLES TO THE SEWER LINE AT THE CENTER LINE OF EACH MANHOLE.
 2. NO REPRESENTATIVE OF THE CITY ENGINEER WILL SURVEY OR LAY OUT ANY PORTION OF THE WORK.
 3. THE PRIVATE ENGINEER SHALL FURNISH THE CITY ENGINEER WITH GRADE SHEETS AND STATIONING FOR ALL HOUSE LATERALS AND "Y" OR "T" BRANCHES AND SHALL PROVIDE STAKES FOR THEM AT THEIR PROPER LOCATIONS WITH STATIONING PLAINLY MARKED. ALL HOUSE LATERALS SHALL BE CONSTRUCTED IN A STRAIGHT ALIGNMENT AT RIGHT ANGLES FROM THE MAIN LINE SEWER EXCEPT AS SHOWN ON THE PLANS. ANY CHANGE IN ALIGNMENT SHALL BE REQUESTED IN WRITING BY THE PRIVATE ENGINEER.
 4. THE PRIVATE ENGINEER SHALL FURNISH THE HOUSE LATERAL DEPTH AT THE PROPERTY LINE BELOW THE TOP OF CURB ELEVATION FOR EACH HOUSE LATERAL ON THE GRADE SHEET.
 5. NO REVISIONS SHALL BE MADE IN THESE PLANS WITHOUT THE APPROVAL OF THE CITY ENGINEER.
 6. THE CONTRACTOR SHALL NOTIFY THE CONSTRUCTION DIVISION BY TELEPHONE, MADISON 9-67, EXT. 878, AT LEAST TWENTY-FOUR HOURS BEFORE STARTING ANY WORK UNDER THIS CONTRACT.
 7. MANHOLES SHALL BE BRICK SEWER STRUCTURES PER S-2, EXCEPT AS NOTED.
 8. USE STANDARD MANHOLE FRAMES AND COVERS, S-13, EXCEPT AS NOTED.
 9. MANHOLE TOPS TO BE AT FINISHED GRADE.
 10. USE EXTRA STRENGTH PIPE, ALL PIPE IS STANDARD DEPTH.
 11. USE MECHANICAL COMPRESSION JOINTS FOR ALL V.C.P. JOINTS PER SPEC. SECT. 34, 42 & 49.
 12. VITRIFIED CLAY PIPE JOINTS SHALL BE TYPE "D," "E" & "F" PER STANDARD SPECIFICATIONS SECTION 34-1.
 13. IF DURING THE COURSE OF CONSTRUCTION IT IS DETERMINED THAT THERE IS LESS THAN FOUR FEET OF COVER OVER THE TOP OF A MAIN LINE OR HOUSE LATERAL V.C.P. SEWER WHICH IS NOT INDICATED ON THE PLANS, THE PIPE SHALL BE ENCASED PER S-23, UNLESS OTHERWISE APPROVED BY THE CITY ENGINEER.
 14. HOUSE LATERALS TO BE CONSTRUCTED WITH 1/4" RISE PER FOOT TO THE PROPERTY LINE.
 15. RESURFACE ALL TRENCHES WITHIN PAVED AREAS TO CITY OF BELLFLOWER ROAD DEPT. REQUIREMENTS IN ACCORDANCE WITH PERMITS.
 16. MANHOLES TO BE TESTED FOR LEAKS PER SECTION 308.8.7 OF THE STANDARD SPECIFICATIONS.
 17. REFER TO SECTION 7-10.41 OF THE STANDARD SPECIFICATIONS, REGARDING SAFETY SIGNALS.
 18. "Y" OR "T" BRANCHES MAY BE USED FOR CONNECTIONS TO MAINLINE SEWERS, EXCEPT AS NOTED.
 19. ALL JOINTS BETWEEN CAST IRON PIPE AND VITRIFIED CLAY PIPE SHALL BE MADE WITH A RUBBER GASKET THAT TYPE "C" OR "D" WITH BUSHING IF NECESSARY PER STANDARD SPECIFICATIONS, SECTION 34-1.
 20. IF A POWER POLE IS WITHIN THREE FEET OF THIS SEWER, THE SEWER SHALL BE ENCASED PER S-23, TWO FEET ON EACH SIDE FROM THE POINT OF INTERFERENCE.

COLLECT CHARGES AS INDICATED

PROFILE, ALIGNMENT AND GRADE OF
 SANITARY SEWERS PAGE 1

TRACT NO. 30586 40576

PRIVATE CONTRACT NO. 8145

W.S. 33
 2 SHEETS, 4 PAGES
 SCALE: VERT. 1"=4' HORIZ. 1"=40'
 AUGUST, 1968

PREPARED IN THE OFFICE OF
 DONALD D. GREEK, CONSULTING CIVIL ENGINEER
 80 PLAZA, ORANGE, CALIFORNIA
Donald D. Greek
 REG. C. E. NO. 12911

FOR LEGEND SEE PLAN NO. S-1

NOTES
 GRADES TO WHICH THIS IMPROVEMENT IS TO BE CONSTRUCTED ARE SHOWN ON PLANS AND PROFILE. GRADE POINTS FOR TOP OF CURB, CENTER LINE OF STREETS, ON CENTER LINE OF ALLEYS AND POINTS BY CIRCLES ON PROPERTY, AT ALL POINTS BETWEEN DESIGNATED POINTS THE GRADE SHALL BE ESTABLISHED SO AS TO CONFORM TO A STRAIGHT LINE BETWEEN SAID DESIGNATED POINTS. REVISIONS IN THIS PLAN MUST BE MADE BY THE CITY ENGINEER. THE CONTRACTOR SHALL BE RESPONSIBLE FOR OBTAINING ALL NECESSARY PERMITS FROM THE CITY OF BELLFLOWER AND THE COUNTY OF SOUTHERN CALIFORNIA. THE CONTRACTOR SHALL BE RESPONSIBLE FOR OBTAINING ALL NECESSARY PERMITS FROM THE BELLFLOWER ROAD DEPARTMENT AND THE CITY OF BELLFLOWER. THE CONTRACTOR SHALL BE RESPONSIBLE FOR OBTAINING ALL NECESSARY PERMITS FROM THE BELLFLOWER ROAD DEPARTMENT AND THE CITY OF BELLFLOWER. THE CONTRACTOR SHALL BE RESPONSIBLE FOR OBTAINING ALL NECESSARY PERMITS FROM THE BELLFLOWER ROAD DEPARTMENT AND THE CITY OF BELLFLOWER. THE CONTRACTOR SHALL BE RESPONSIBLE FOR OBTAINING ALL NECESSARY PERMITS FROM THE BELLFLOWER ROAD DEPARTMENT AND THE CITY OF BELLFLOWER.

CITY OF BELLFLOWER, CALIFORNIA
 JOHN A. LAMBIE, CITY ENGINEER
 APPROVED BY *John A. Lambie*
 REG. CIVIL ENGINEER

APPROVED BY *Donald D. Greek*
 REG. CIVIL ENGINEER

CHECKED BY *Donald D. Greek* 4/16/68
 REG. CIVIL ENGINEER

