

B.M. 51.642 ELEV. 1262.07  
 Lower Depart. 8.75' Top 14.5' side conc. base  
 of NE. Cor. Edison High Tension Tower  
 W. of 373 W 3 1/2 St. & Lyons Avenue  
 and 230 E Wiley Canyon Road  
 NEWHALL QUAD. 1958

THE FOLLOWING COUNTY ENGINEER STANDARD PLANS  
 APPLY TO THIS PROJECT:

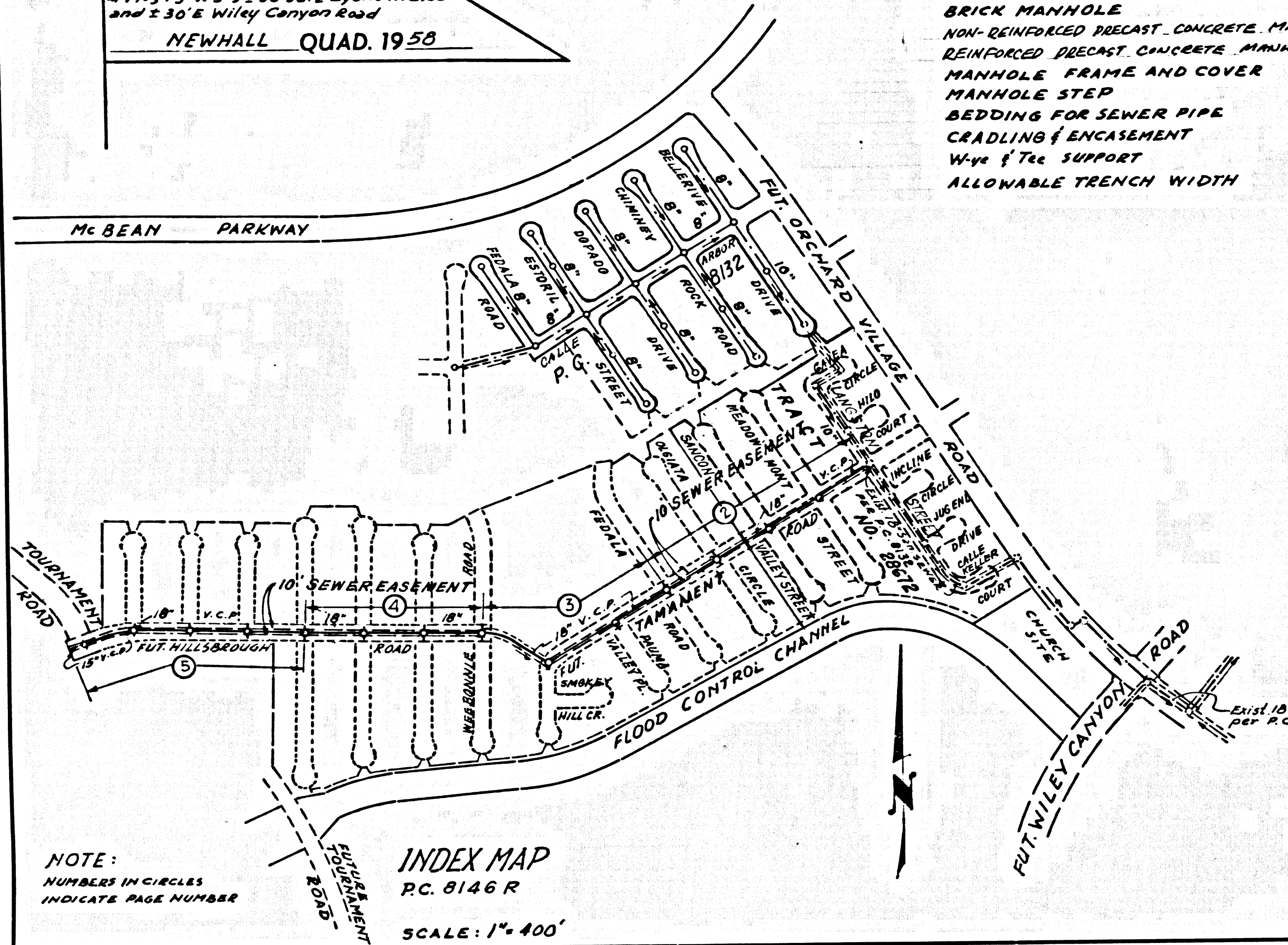
LEGEND	5-1
MINIMUM PUBLIC SAFETY REQUIREMENTS	5-2
BRICK MANHOLE	5-3
NON-REINFORCED PRECAST CONCRETE MANHOLES	5-5
REINFORCED PRECAST CONCRETE MANHOLES	5-6
MANHOLE FRAME AND COVER	5-15
MANHOLE STEP	5-17
BEDDING FOR SEWER PIPE	5-21
CRADLING & ENCASUREMENT	5-23
Ways & Tree SUPPORT	5-24
ALLOWABLE TRENCH WIDTH	5-33

**DOUBLE SCALE**  
 NEWHALL BLDG. DIST. NO. 8.2

PROFILE, ALIGNMENT AND GRADE OF **P.C. 8146 R**  
**SANITARY SEWERS PAGE 1**  
 CONSTRUCTED IN  
 RIGHT OF WAY SOUTH OF McBEAN PARKWAY  
 BETWEEN LANGSTON STREET AND TOURNAMENT ROAD

**PRIVATE CONTRACT NO. 8146 R**

W.S. 62  
 3 SHEETS, 5 PAGES  
 SCALE: HORIZ. 1" = 40' VERT. 1" = 4'  
 DATE: AUGUST, 1968  
 PREPARED IN THE OFFICES OF  
**VOORHEIS-TRINDLE CO.**  
 5919 Van Nuys Blvd., Van Nuys, California  
 By: *Michael F. Maddox*  
 REG. C. E. NO. 16744



County Sanitation Districts shall be notified prior to the following so that required inspection can be made (Phone 331-1023 - 800-8099)

Acceptance of the project.

No connections for the disposal of industrial wastes shall be made to sewers shown on these drawings without written permission from the Chief Engineer and General Manager of the County Sanitation Districts.

- NOTES:
- PROVIDE STAKES ON THE PROPERTY LINE OR PROPERTY LINES PRODUCED AT RIGHT ANGLES TO THE SEWER LINE AT THE CENTER LINE OF EACH MANHOLE.
  - NO REPRESENTATIVE OF THE COUNTY ENGINEER WILL SURVEY OR LAY OUT ANY PORTION OF THE WORK.
  - THE PRIVATE ENGINEER SHALL FURNISH THE COUNTY ENGINEER WITH GRADE SHEETS AND STATIONING FOR ALL "Y" OR "T" MANHOLES AND SHALL PROVIDE STAKES FOR THEM AT THEIR PROPER LOCATIONS WITH STATIONING PLAINLY MARKED.
  - THE COUNTY ENGINEER WILL BE RESPONSIBLE FOR THE PROTECTION OF ALL UTILITIES LOCATED WITHIN THE RIGHT OF WAY.
  - NO REVISIONS SHALL BE MADE IN THESE PLANS WITHOUT THE APPROVAL OF THE COUNTY ENGINEER.
  - THE CONTRACTOR SHALL NOTIFY THE CONSTRUCTION DIVISION BY TELEPHONE, MADISON 9-02, EXT. 8188, AT LEAST TWENTY-FOUR HOURS BEFORE STARTING ANY WORK UNDER THIS CONTRACT.
  - MANHOLES SHALL BE SUCH SEWER STRUCTURES PER 8-1 OR PRECAST CONCRETE MANHOLES PER 5-5 OR 5-6, EXCEPT AS NOTED.
  - USE STANDARD MANHOLE FRAMES AND COVERS, 6-15.
  - MANHOLE TOPS IN UNIMPROVED RIGHTS-OF-WAY TO BE SIX INCHES ABOVE FINISHED GRADE.
  - USE EXTRA STRENGTH PIPE. ALL PIPE IS STANDARD DAPIN EXCEPT AS NOTED.
  - VITRIFIED CLAY PIPE JOINTS SHALL BE TYPE "B" - 1" OR "C" - 1" PER 2-00-2.
  - A POWER POLE IS WITHIN THREE FEET OF THE SEWER. THE SEWER SHALL BE ENCASED, PER 5-20, TWO FEET ON EACH SIDE FROM THE POINT OF INTERFERENCE.
  - IF DURING THE COURSE OF CONSTRUCTION IT IS DETERMINED THAT THERE IS LESS THAN FOUR FEET OF COVER OVER THE TOP OF A MAIN LINE OR HOUSE LATERAL V.C.P. SEWER WHICH IS NOT INDICATED ON THE PLANS, THE PIPE SHALL BE ENCASED PER 5-22, UNLESS OTHERWISE APPROVED BY THE COUNTY ENGINEER.
  - RESURFACE ALL TRENCHES WITHIN PAVED AREAS TO MEET L.A. COUNTY ROAD DEPT. OR CALIFORNIA STATE HIGHWAY REQUIREMENTS IN ACCORDANCE WITH PERMITS.
  - SEWER TO BE TESTED FOR LEAKAGE PER SEC. 306-2-3.7 OF P.C. 306.
  - REFER TO SEC. 7-10.8.1 OF THE STANDARD SPECIFICATIONS REGARDING SAFETY ORDERS.
  - TRUNK LINE BRANCHES MAY BE MADE FOR CONNECTION TO MAIN LINE SEWERS, EXCEPT AS NOTED.
  - SPECIAL BACKFILL IN DESIGNATED AREAS: 1. BACKFILL TRENCH AND SERVICE HOLES WITH RECOMMENDED SAND TO ACHIEVE THE NATURAL OR ROUNDED GRADES AND SLOPES SHOWN ON DRAWING PLANS, TR-80876-8873-2871, APPROX. BY THE BUILDING AND SAFETY DIVISION; 2. ALL BACKFILL AND SAND REPLACED SHALL BE COMPACTED TO THE MIN. OF 90% OF MAXIMUM DENSITY PER ASTM METHOD OF TEST D-1557-57 AS MODIFIED, ACCEPTABLE CERTIFICATION OF SUCH CONNECTION SHALL BE SUBMITTED TO THE COUNTY DIVISION.
  - SEWER PIPE BEDDING SHALL CONFORM TO 5-21.

THE SEWER EASEMENT FOR THIS PROJECT HAS BEEN DEDICATED PER TRACT NO. 28671, M.B. 781-78-84

**NOTICE TO CONTRACTOR**  
 The existence and location of any underground utility pipes or structures shown on these plans are obtained by a search of the available records. To the best of my knowledge there are no existing utilities except as shown on these plans. The contractor is required to take due precautionary measures to protect the utility lines shown and any other lines not of record or not shown on these plans.  
*Michael F. Maddox*  
 REG. C. E. NO. 16744

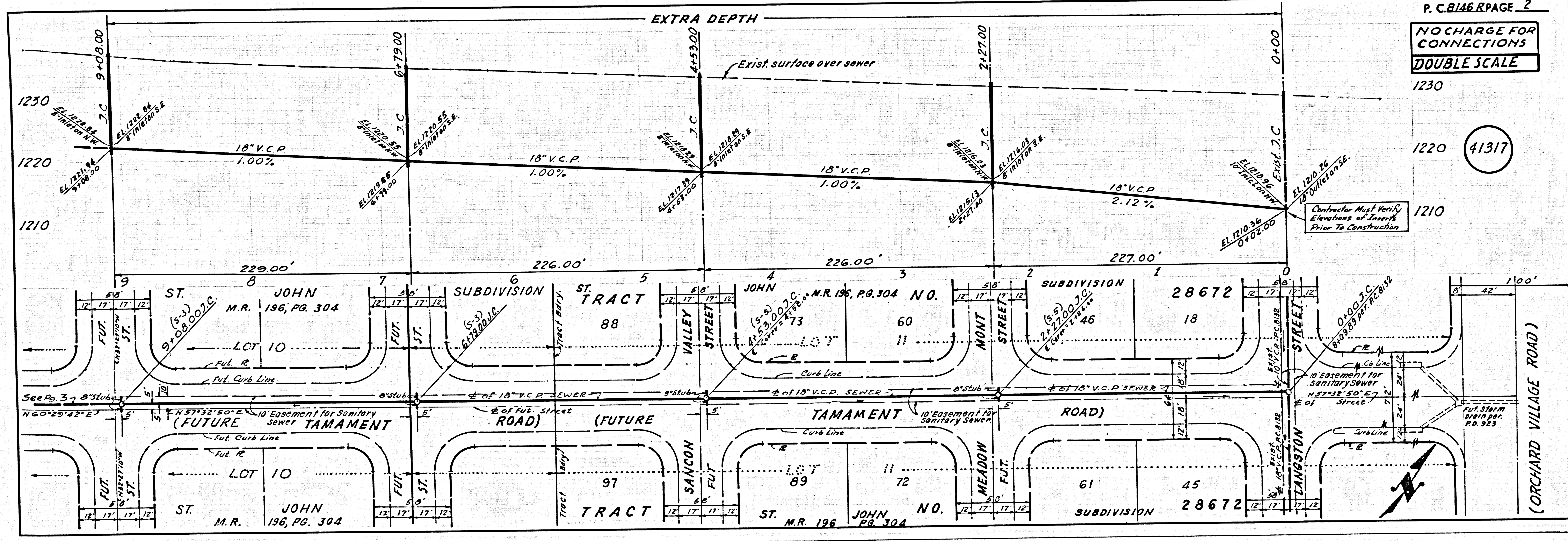
**DO NOT ISSUE HOUSE CONNECTION PERMITS UNTIL P.C. 8132 IS ACCEPTED**

NOTES:  
 GRADES TO WHICH THIS IMPROVEMENT IS TO BE CONSTRUCTED ARE SHOWN ON PLANS AND PROFILES. GRADE POINTS FOR TOP OF CURBS, CENTER LINE OF STREETS, OR CENTER LINE OF ALLEYS ARE SHOWN BY CIRCLES ON PROFILES. AT ALL POINTS BETWEEN DESIGNATED POINTS THE GRADE SHALL BE ESTABLISHED SO AS TO CONFORM TO A STRAIGHT LINE DRAWN BETWEEN SAID DESIGNATED POINTS. ELEVATIONS ARE IN FEET ABOVE U.S.C. & G.S. SEA LEVEL DATUM OF 1929.  
 THIS DRAWING AND THE DATA HEREON ARE HEREBY MADE A PART OF THE SPECIFICATIONS.  
 WORK SHALL BE CONSTRUCTED ACCORDING TO STANDARD SPECIFICATIONS FOR PUBLIC WORKS CONSTRUCTION COUNTY ENGINEER'S MANUAL, DATED JAN. 2, 1969 AS REVISED AND SHALL BE PROSECUTED IN THE OFFICE OF THE COUNTY ENGINEER.  
 BEFORE WORK CAN BE STARTED, THE CONTRACTOR MUST OBTAIN A PERMIT TO EXCAVATE IN COUNTY STREETS FROM THE L.A. COUNTY ROAD DEPT., DISTRICT OFFICE NO. 5, AND PAY A FEE TO THE COUNTY ENGINEER, ROOM 308, COUNTY ENGINEERING BUILDING, 100 WEST SECOND STREET, LOS ANGELES, CALIFORNIA. MIDNIGHT OFFICE, SUFFICIENT TO COVER THE COST OF CONSTRUCTION INSPECTION AND RECORD PLANS.  
 APPROVAL OF THIS PLAN BY THE COUNTY OF LOS ANGELES DOES NOT CONSTITUTE A REPRESENTATION AS TO THE ACCURACY OF THE LOCATION OF OR THE EXISTENCE OR NON-EXISTENCE OF ANY UNDERGROUND UTILITY PIPE, OR STRUCTURE WITHIN THE LIMITS OF THE PROJECT. THIS NOTE APPLIES TO ALL PAGES.  
 IF WORK IS TO BE DONE IN A STATE HIGHWAY, A PERMIT MUST BE OBTAINED FROM THE STATE OF CALIFORNIA, DIVISION OF HIGHWAYS, 128 SOUTH SPRING STREET, LOS ANGELES, CALIFORNIA.

COUNTY OF LOS ANGELES, CALIFORNIA  
 JOHN A. LAMBIE, COUNTY ENGINEER  
 J. D. PARKHURST, CHIEF ENGINEER  
 CO. SAN. DIST. NO. 22  
 APPROVED BY: *[Signature]*  
 OFFICE ENGINEER

APPROVED BY: *[Signature]*  
 CHECKED BY: *Ralph Schupp* 2/21/69  
 REG. C. E. NO. 13906

J.N. 0369.34

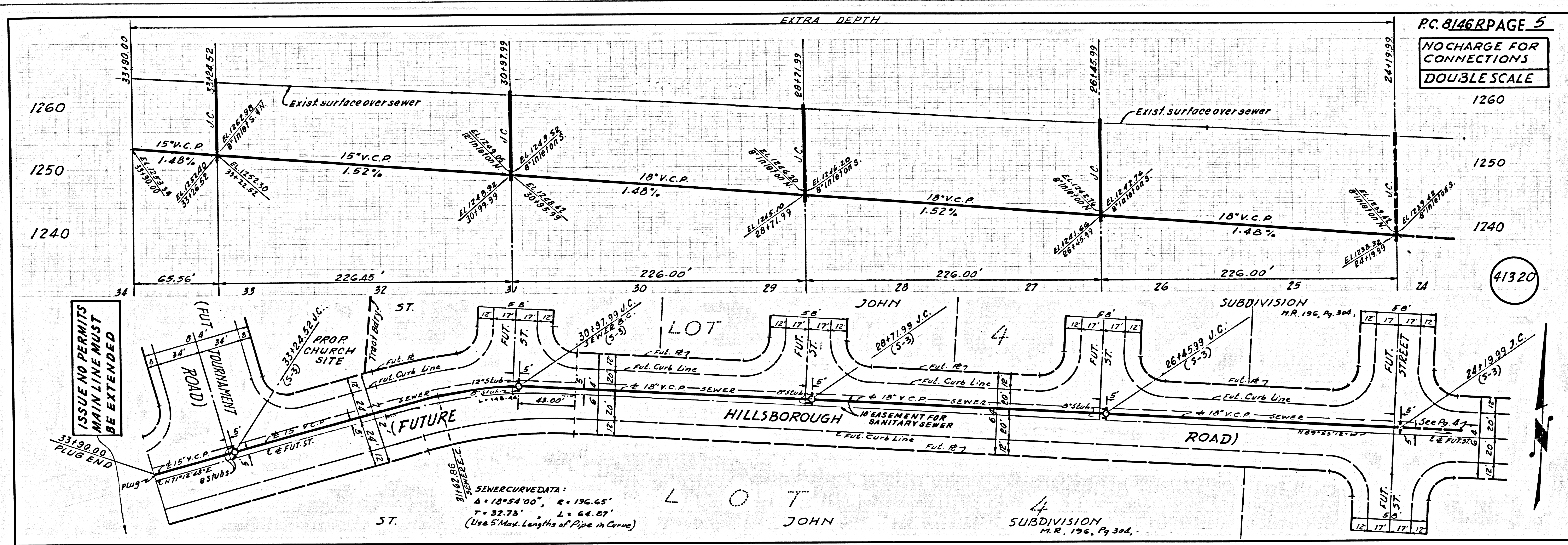


P.C. 8146 R PAGE 2  
 NO CHARGE FOR CONNECTIONS  
**DOUBLE SCALE**

41317

Contractor Must Verify Elevations of Joints Prior To Construction





PAGE