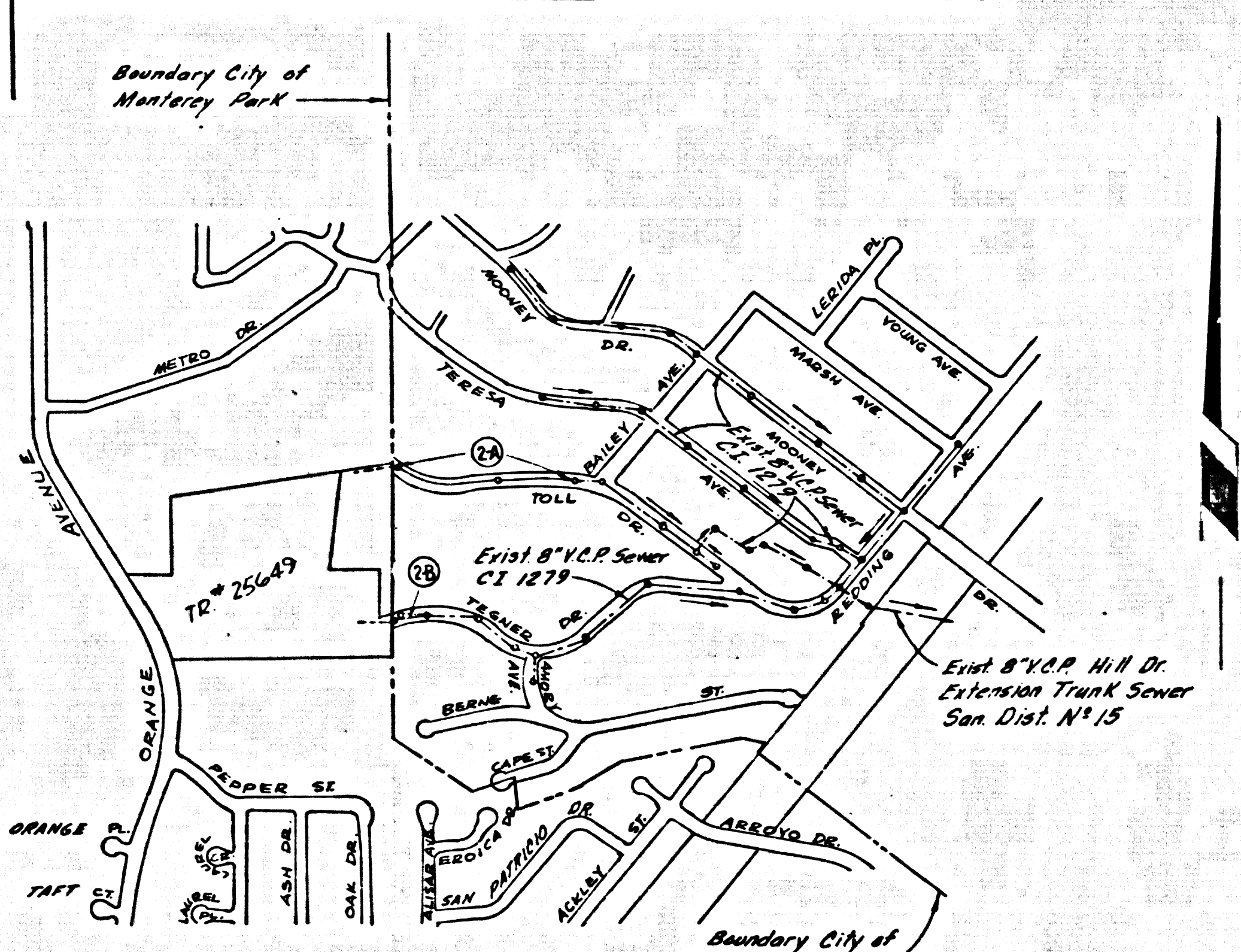


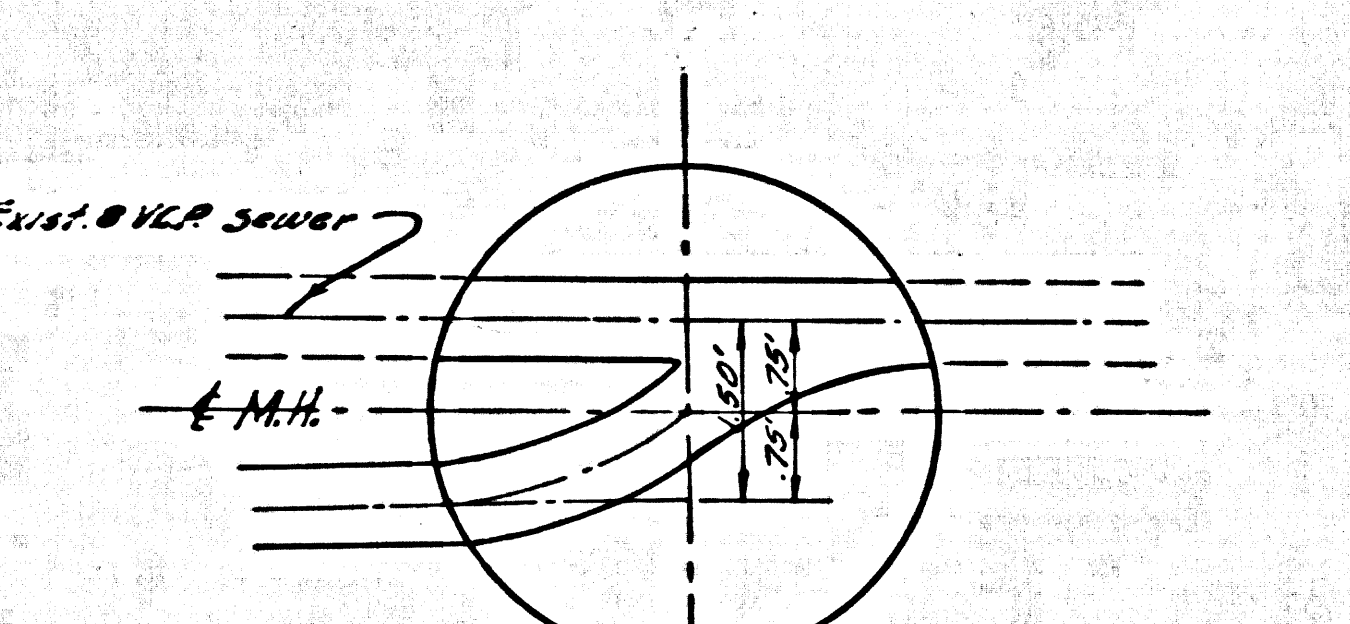
B.M. W.M. 504 ELEV. 399.398 C.S.F.B. 2.184 p.8  
 TOLL DR. S SIDE AT BAILEY AVE.,  
 LFT IN CONC. WALK TO HOUSE N° 7328



INDEX MAP  
 TRACT N° 25649  
 P.C. 8147  
 SCALE 1"=600'

THE FOLLOWING COUNTY ENGINEER STANDARD PLANS APPLY TO THIS PROJECT

- Legend . . . . . S-1  
 Min. Public Safety Requirements . . . . . S-2  
 Brick Manhole . . . . . S-3  
 Non Reinforced Precast Concrete Manhole . . . . . S-4  
 Reinforced Precast Concrete Manhole . . . . . S-5  
 Manhole Frame and Cover . . . . . S-15  
 Manhole Step . . . . . S-17  
 Bedding for Sewer Pipe . . . . . S-23  
 Grading and Encasement . . . . . S-25  
 Wye or Tee Support . . . . . S-28  
 Allowable Trench Widths . . . . . S-35



JUNCTION CHAMBER  
 TEGNER DR. 5th 18+65.00

DOUBLE SCALE  
 TEMPLE CITY BLDG. DIST. NO. 5

- NOTES:
1. PROVIDE SEASONS ON THE PROPERTY LINE OR PROPERTY LINES PRODUCED AT RIGHT ANGLES TO THE SEWER LINE AT THE CENTER LINE OF EACH MANHOLE.
  2. NO REPRESENTATIVE OF THE COUNTY ENGINEER WILL SURVEY OR LAY OUT ANY PORTION OF THE WORK.
  3. THE PRIVATE ENGINEER SHALL FURNISH THE COUNTY ENGINEER WITH GRAD SHEETS AND STATIONING FOR ALL HOUSE LATERALS AND 1" OF 7" BRANCHES AND SHALL PROVIDE SEASONS FOR THEM AT THEIR PROPER LOCATIONS WITH STATIONING PLANTS MARKED. ALL HOUSE LATERALS SHALL BE CONSTRUCTED IN A STRAIGHT ALIGNMENT AT RIGHT ANGLES FROM THE MAIN LINE SEWER EXCEPT AS SHOWN ON THE PLANS. HOUSE LATERALS FROM CHIMNEYS SHALL NOT HAVE AN ANGLE OF LESS THAN 45° WITH THE MAIN LINE SEWER. ANY CHANGE IN ALIGNMENT SHALL BE REQUESTED IN WRITING BY THE PRIVATE ENGINEER.
  4. THE PRIVATE ENGINEER SHALL FURNISH THE HOUSE LATERAL DEPTH AT THE PROPERTY LINE BELOW THE TOP OF CURB ELEVATION FOR EACH HOUSE LATERAL ON THE GRAD SHEET.
  5. NO REVISIONS SHALL BE MADE IN THESE PLANS WITHOUT THE APPROVAL OF THE COUNTY ENGINEER.
  6. THE CONTRACTOR SHALL NOTIFY THE CONSTRUCTION DIVISION BY TELEPHONE, MADISON 9-424, EXT. 8151, AT LEAST TWENTY-FOUR HOURS BEFORE STARTING ANY WORK UNDER THIS CONTRACT.
  7. ALL STRUCTURES SHALL BE EITHER BRICK MANHOLES PER S-3 OR PRECAST CONCRETE MANHOLES PER S-4 OR S-5, EXCEPT AS NOTED.
  8. "T" or "Y" Branches may be used for connections to manhole sewers except as noted.
  9. MANHOLE TOPS IN UNIMPROVED RIGHTS-OF-WAY TO BE SIX INCHES ABOVE FINISHED GRADE.
  10. USE EXTRA STRENGTH PIPE. ALL PIPE IS STANDARD DEPTH EXCEPT AS NOTED.
  11. *Whitford Clay Pipe Joints shall be Type "D", 7" or "8" per S.H. Spec. Sec. 208.2.*
  12. IF A POWER POLE IS WITHIN THREE FEET OF THE SEWER, THE SEWER SHALL BE ENCASED, PER S-25, TWO FEET ON EACH SIDE FROM THE POINT OF INTERFERENCE.
  13. IF DURING THE COURSE OF CONSTRUCTION IT IS DETERMINED THAT THERE IS LESS THAN FOUR FEET OF COVER OVER THE TOP OF A MAIN LINE OR HOUSE LATERAL V.C.P. SEWER WHICH IS NOT INDICATED ON THE PLANS, THE PIPE SHALL BE ENCASED PER S-25, UNLESS OTHERWISE APPROVED BY THE COUNTY ENGINEER.
  14. HOUSE LATERALS TO BE CONSTRUCTED WITH INVERTS AT PROPERTY LINE 6 FEET BELOW CURB GRADE EXCEPT AS NOTED.
  15. RESURFACE ALL TRENCHES WITHIN PAVED AREAS TO MEET L.A. COUNTY ROAD DEPT. OR CALIFORNIA STATE HIGHWAY REQUIREMENTS BY ACCORDANCE WITH PERMITS.
  16. SEWERS TO BE TESTED FOR LEAKAGE PER SECTION 306-237 STANDARD SPECIFICATIONS.
  17. Refer to Section 7-6.1.1 of the Standard Specifications regarding Safety Orders.
  18. SPECIAL ACCURACY IN DESIGNATED AREAS:  
 (a) BACKFILL TRENCH AND REPLACE OTHER EARTH REMOVED SO AS TO ACHIEVE THE NATURAL OR FINISHED GRADES AND SLOPES SHOWN ON THE GRADING PLAN APPROVED FOR THIS TRACT BY THE BUILDING AND SAFETY DIVISION.  
 (b) ALL BACKFILL AND EARTH REPLACED SHALL BE COMPLETED TO A MINIMUM OF 90% OF MAXIMUM DENSITY PER A.S.T.M. STANDARD METHOD OF TEST D955-57 AS MODIFIED. ACCEPTABLE CERTIFICATION OF SUCH COMPACTION SHALL BE SUBMITTED TO THE CONSTRUCTION DIVISION.  
 (c) All Joints between Cast Iron Pipe and Whitford Clay Pipe shall be made with a Rubber Sleeve Joint, Type "C" or "D" with bedding if necessary per Standard Specifications Section 208.2.

County Sanitation Districts shall be notified prior to the following so that required inspection can be made (Phone 337-1025 - 466-8997)

Acceptance of the project:

**COLLECT CHARGES AS INDICATED**

No connections for the disposal of industrial wastes shall be made to sewers shown on these drawings without written permission from the Chief Engineer and General Manager of the County Sanitation Districts.

PROFILE ALIGNMENT AND GRADE OF  
 SANITARY SEWERS P.C. 8147  
 TO BE CONSTRUCTED IN PAGE 1  
 TRACT N° 25649

PRIVATE CONTRACT NO. 8147  
 W.S. 36, C-1  
 1 SHEETS; 2 PAGES  
 SCALE: VERT. 1"=8'  
 HORIZ. 1"=80'  
 NOVEMBER, 1968  
 PREPARED IN THE OFFICES OF  
**EVANS & ASSOCIATES INC.**  
 1543 WEST GARVEY AVE. WEST COVINA, CALIF. 91791-4081  
 REG. C. E. NO. 14748  
 FOR LEGEND SEE PLAN NO. S-1

NOTE: GRADES TO WHICH THIS IMPROVEMENT IS TO BE CONSTRUCTED ARE SHOWN ON PLANS AND PROFILES. GRADE POINTS FOR TOP OF CURB, CENTER LINE OF STREET, OR CENTER LINE OF ALLEYS ARE SHOWN BY CHECKS ON PROFILES. AT ALL POINTS BETWEEN DESIGNATED POINTS THE GRADE SHALL BE ESTABLISHED SO AS TO CONFORM TO A STRAIGHT LINE DRAWN BETWEEN SAID DESIGNATED POINTS. ELEVATIONS ARE IN FEET ABOVE U.S.C. & G.S. SEA LEVEL DATUM OF 1929. THIS DRAWING AND THE DATA HEREON ARE HEREBY MADE A PART OF THE SPECIFICATIONS. WORK SHALL BE CONSTRUCTED ACCORDING TO THE STANDARD SPECIFICATIONS FOR PUBLIC WORKS CONSTRUCTION AND COUNTY ENGINEER SPECIAL PROVISIONS DATED FEB. 15, 1960. AS REVISED, AND SHALL BE PROSECUTED ONLY IN THE PRESENCE OF THE COUNTY ENGINEER. BEFORE WORK CAN BE STARTED, THE CONTRACTOR MUST OBTAIN A PERMIT TO EXCAVATE IN COUNTY STREETS FROM THE L.A. COUNTY ROAD DEPT., DISTRICT OFFICE NO. 3241 BAYVIEW AVE. LOS ANGELES, CALIF. 90007. APPROVAL OF THIS PLAN BY THE COUNTY OF LOS ANGELES DOES NOT CONSTITUTE A REPRESENTATION AS TO THE ACCURACY OF THE LOCATION OF OR THE EXISTENCE OR NON-EXISTENCE OF ANY UNDERGROUND UTILITY PIPE, OR STRUCTURE WITHIN THE LIMITS OF THIS PROJECT. THIS NOTE APPLIES TO ALL PAGES. IF WORK IS TO BE DONE IN A STATE HIGHWAY, A PERMIT MUST BE OBTAINED FROM THE STATE OF CALIFORNIA, DIVISION OF HIGHWAYS, 120 SOUTH SPRING STREET, LOS ANGELES, CALIFORNIA.

COUNTY OF LOS ANGELES, CALIFORNIA  
 JOHN A. LAMBIE, COUNTY ENGINEER J. D. PARKHURST, CHIEF ENGINEER  
 CO. SAN DIST. NO. 13  
 APPROVED BY: *[Signature]* DATE: 11-25-68 APPROVED BY: *[Signature]* DATE: 11-25-68  
 REGIONAL ENGINEER CITY ENGINEER  
 CHECKED BY: *[Signature]* DATE: 11-25-68 APPROVED BY: *[Signature]* DATE: 11-25-68  
 REG. C. E. NO. 1666 CITY ENGINEER  
 J.N. 0250.02

