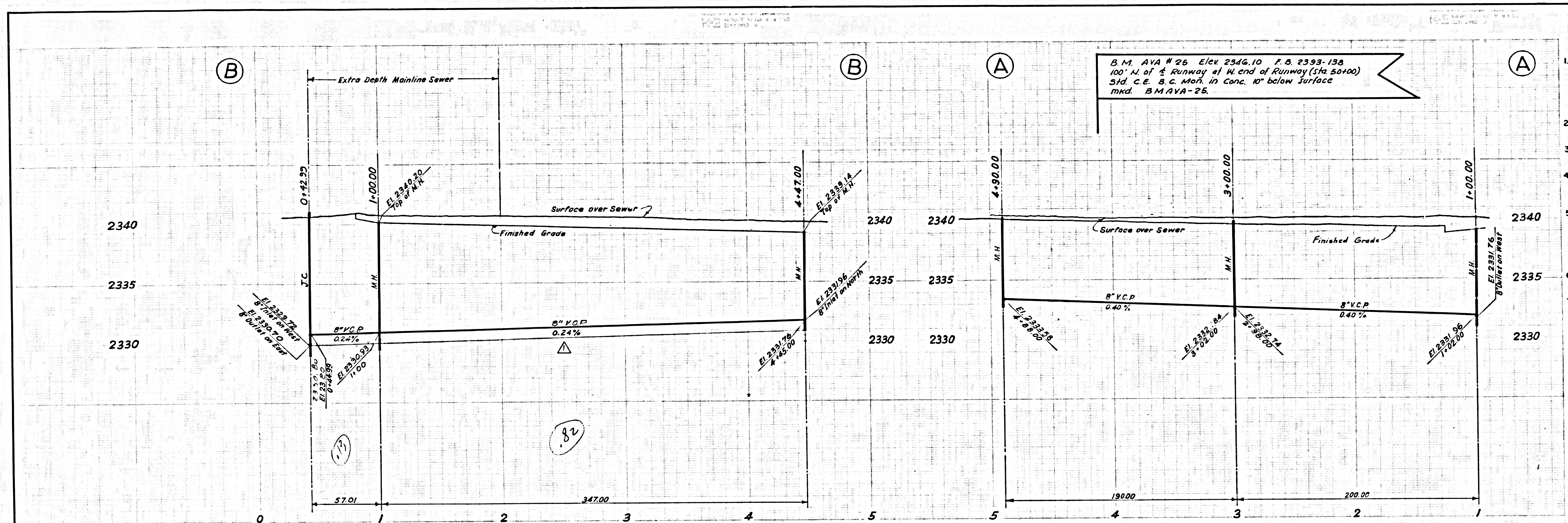
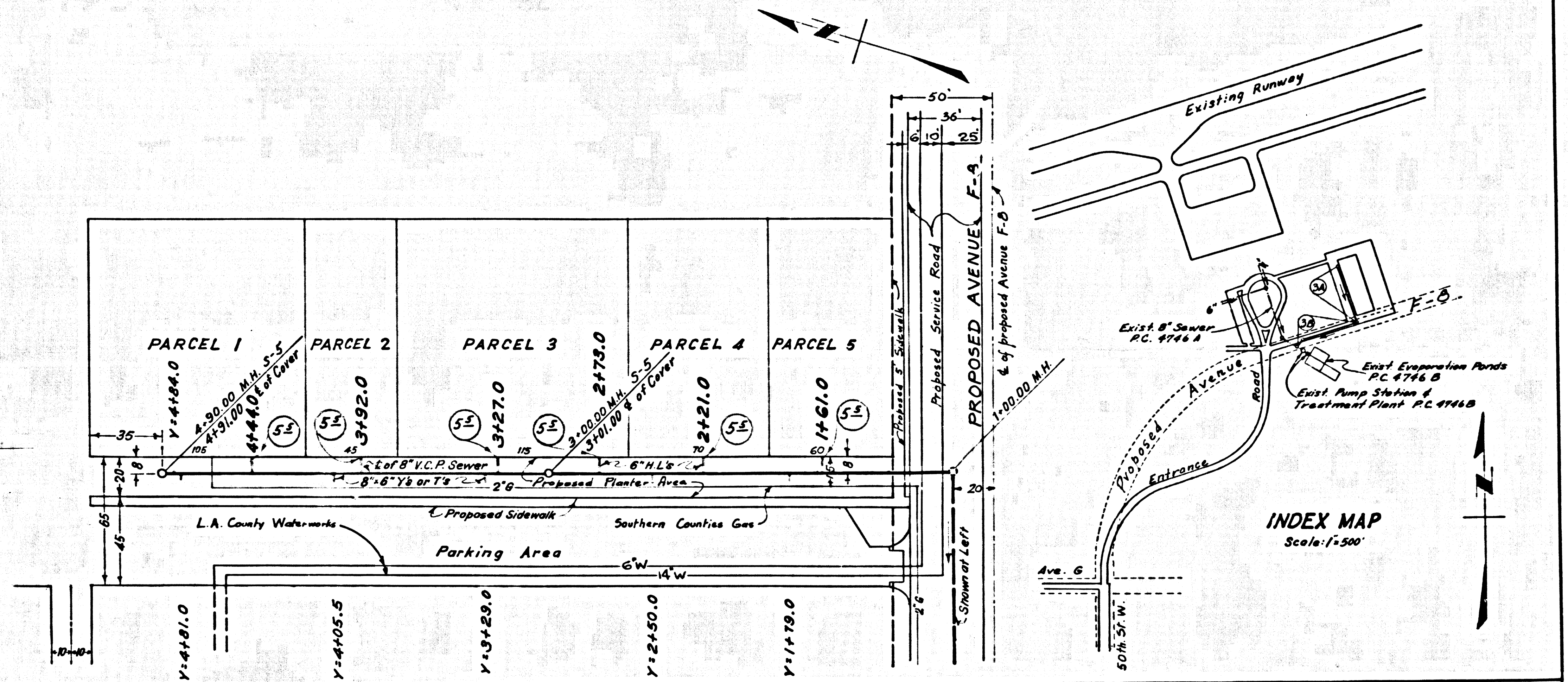
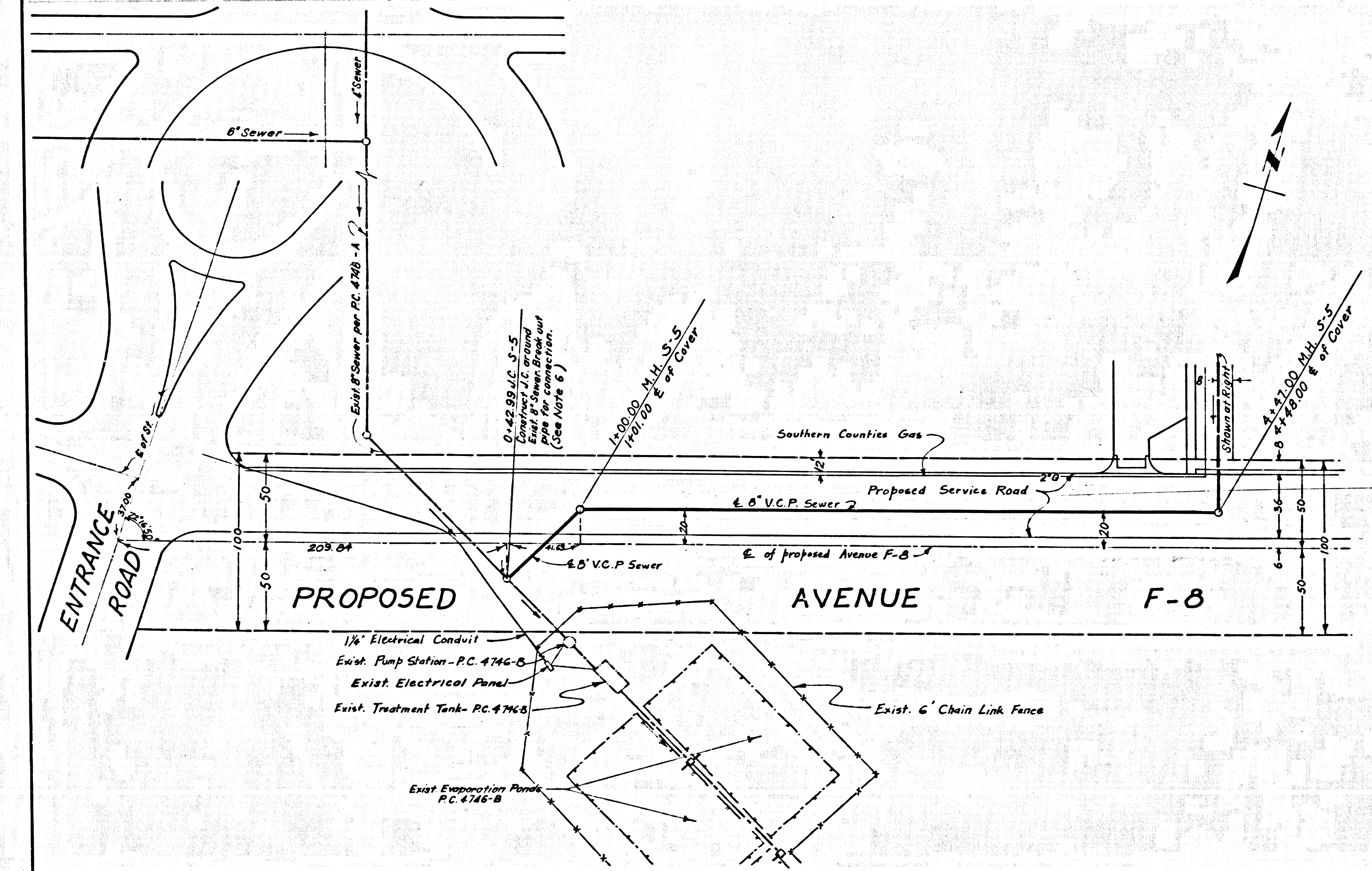


**GENERAL SEWER NOTES**

- Sanitary Sewers shall be constructed in accordance with the Standard Specifications for Public Works Construction (hereafter referred to as the Standard Specifications), Special Provisions and Standard Plans on file in the office of the County Engineer.
- Refer to Section 7-10.4.1 of the Standard Specifications, regarding Safety Orders.
- Existing sewer service and flow shall be maintained at all times.
- The Contractor shall notify the Construction Division of the County Engineer by telephone 629-4747, Ext 81551, at least 24 hours before starting any work under this contract.
- The Contractor shall secure a fee-exempt Construction permit from the County Engineer before starting sewer construction. Application for this permit is to be made to the County Engineer, Sanitation Division, Room 309, 108 West Second Street, Los Angeles 12, California.
- Manhole tops in unimproved rights-of-way to be six inches above finished grade.
- The following latest revised Standard Plans shall apply in the construction of this project: S-1, S-2, S-3, S-5, S-6, S-15, S-17, S-21, S-26, S-30 and S-33.



41234



INDEX MAP  
Scale 1/500'

REVISIONS		
No.	Description	By / Date
1	Change grade between Sta. 0+42.99 and Sta. 4+47.00 (Section B-B) from 0.40% to 0.24%.	KW / 1/10/69

DEPARTMENT OF THE COUNTY ENGINEER COUNTY OF LOS ANGELES APPROVED: <i>[Signature]</i> SANITATION DIVISION DATE: MAR 17, 1969	DATE: MARCH 1969 DESIGNED BY: <i>[Signature]</i> CHECKED BY: <i>[Signature]</i> DRAWN BY: <i>[Signature]</i> AS BUILT CORRECTIONS	FOX AIRFIELD SANITARY SEWER SYSTEM TENANT SITE DEVELOPMENT CASH CONTRACT NO. 8153	SPEC. NO. 2888 D-D WORK ORDER 7441.24 CAPITAL PROJECT 74-41 SHEET NO. 3 OF 6 SHEETS
---	---	--	---