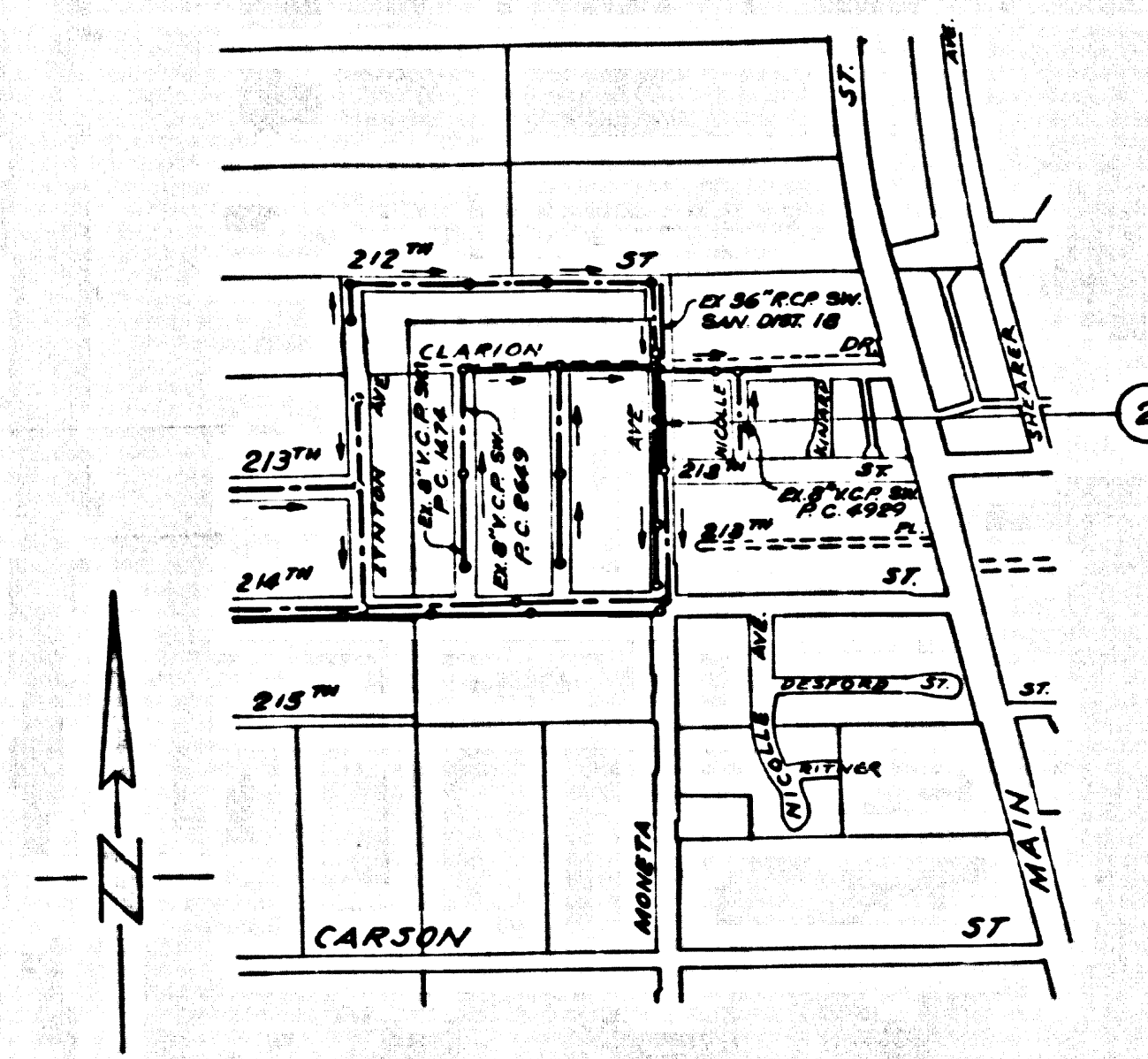


CITY OF CARSON
BUILDING DISTRICT No.12.05

B.M. SY 3914 ELEV. 28.828
L.F.T. ± 19' WEST & INT.
213TH ST. & MAIN ST.
GARDENA QUAD.



INDEX MAP
SCALE: 1"=600'

USE EXTRA STRENGTH PIPE, ALL PIPE IS STANDARD DEPTH EXCEPT AS NOTED. ALLOWABLE TRENCH WIDTH UNLIMITED.
USE MECHANICAL COMPRESSION JOINTS FOR ALL VITRIFIED CLAY PIPE SEWERS.
ALL STRUCTURES SHALL BE BRICK MANHOLES, EXCEPT AS NOTED.
USE STANDARD MANHOLE FRAMES AND COVERS, EXCEPT AS NOTED.
THE ENGINEER SHALL NOTIFY THE CONSTRUCTION DIVISION BY TELEPHONE MADISON 9-4747, EXT. 81891 AT LEAST 24 HOURS BEFORE STARTING ANY WORK UNDER THIS CONTRACT.
ALL STATE AND LOCAL TRENCH SAFETY ORDERS WILL BE RIGIDLY ENFORCED.
RESURFACING SCHEDULE: RESURFACE TRENCH WITHIN PAVED AREA WITH PREMIUM TYPE II ASPHALT CONCRETE 8 INCHES IN THICKNESS.
PORTY-EIGHT HOURS PRIOR TO STARTING CONSTRUCTION NOTIFY:
MR. JANE GARRETT, 615-1514
SOUTHERN CALIFORNIA GAS CO. EXT. 824
DOMINGUEZ WATER CORPORATION
MR. B. JOHNSON, 778-2901 EXT. 818
OFFICE OF THE CITY ENGINEER OF CARSON 328-2420

ALL CONCRETE CROSS CUTTERS, CURBS, CUTTERS, PAVEMENT, AND DRIVEWAYS SHALL BE TURNED OR JACKED PER LOS ANGELES COUNTY ROAD DEPARTMENT REQUIREMENTS.
THE FOLLOWING LATEST REVISED STANDARD PLANS ON FILE IN THE OFFICE OF COUNTY ENGINEER SHALL APPLY IN THE CONSTRUCTION OF THIS PROJECT.

LEGEND	5-1
MINIMUM EXCAVATION SAFETY REQUIREMENTS	5-2
BRICK MANHOLE	5-3
MANHOLE FRAME AND COVER	5-18
MANHOLE STEP	5-17
ROOFING FOR SEWER PIPE	5-21
SPECIAL SUPPORT AND PROTECTION	5-22
CRABBING AND ENCASING	5-23
STANDARD WYE SUPPORT	5-26
STOPPER	5-30

PRIVATE CONTRACT NO. 8156

PROFILE, ALIGNMENT AND GRADE OF
SANITARY SEWERS
TO BE CONSTRUCTED IN

MONETA AVE.

40565

1 SHEET; 2 PAGES

SCALE: HORIZ. 1"=40' VERT. 1"=4'

1968

PREPARED IN THE OFFICE OF THE CHIEF ENGINEER OF COUNTY
SANITATION DISTRICT NO. 8 OF LOS ANGELES COUNTY.

JOHN A. LAMBIE CITY ENGINEER

W.S. 26-37

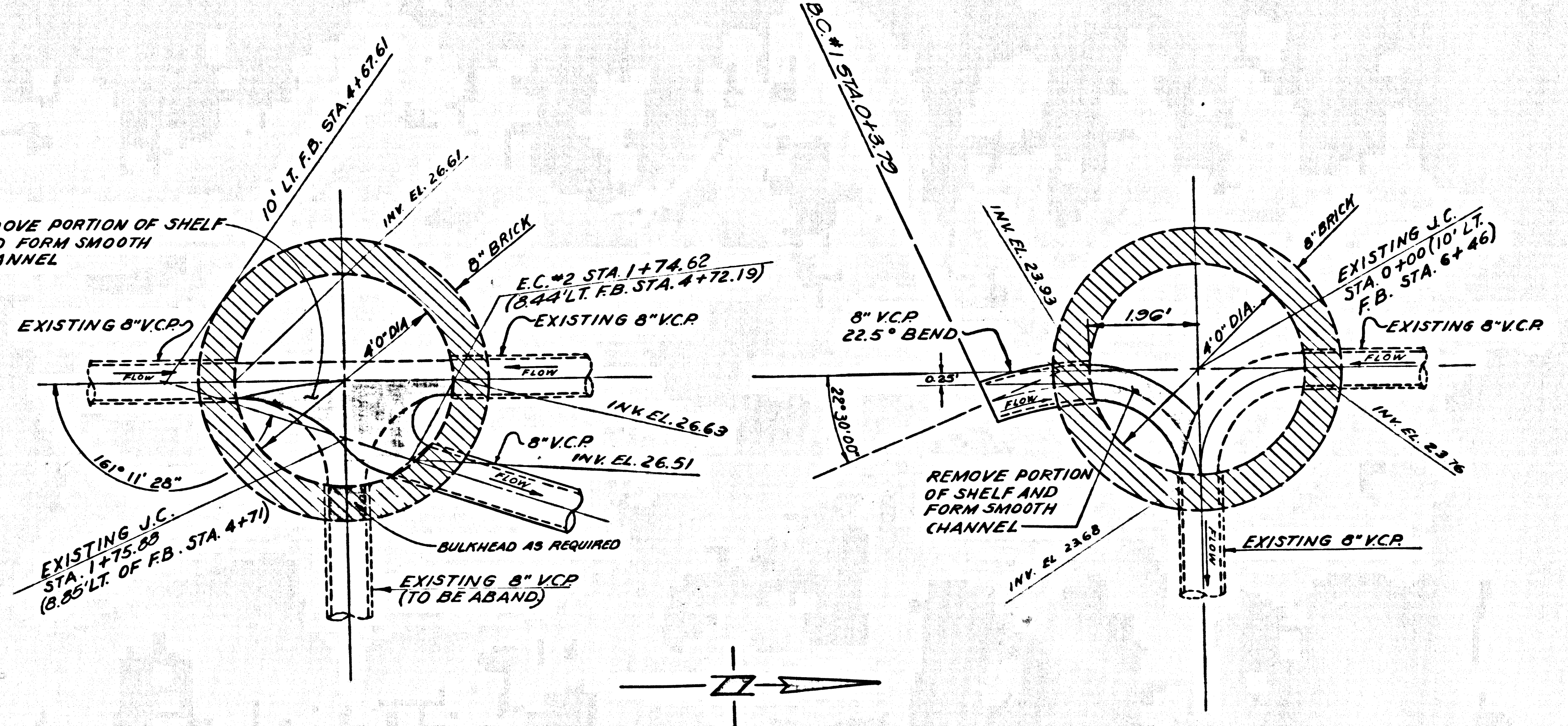
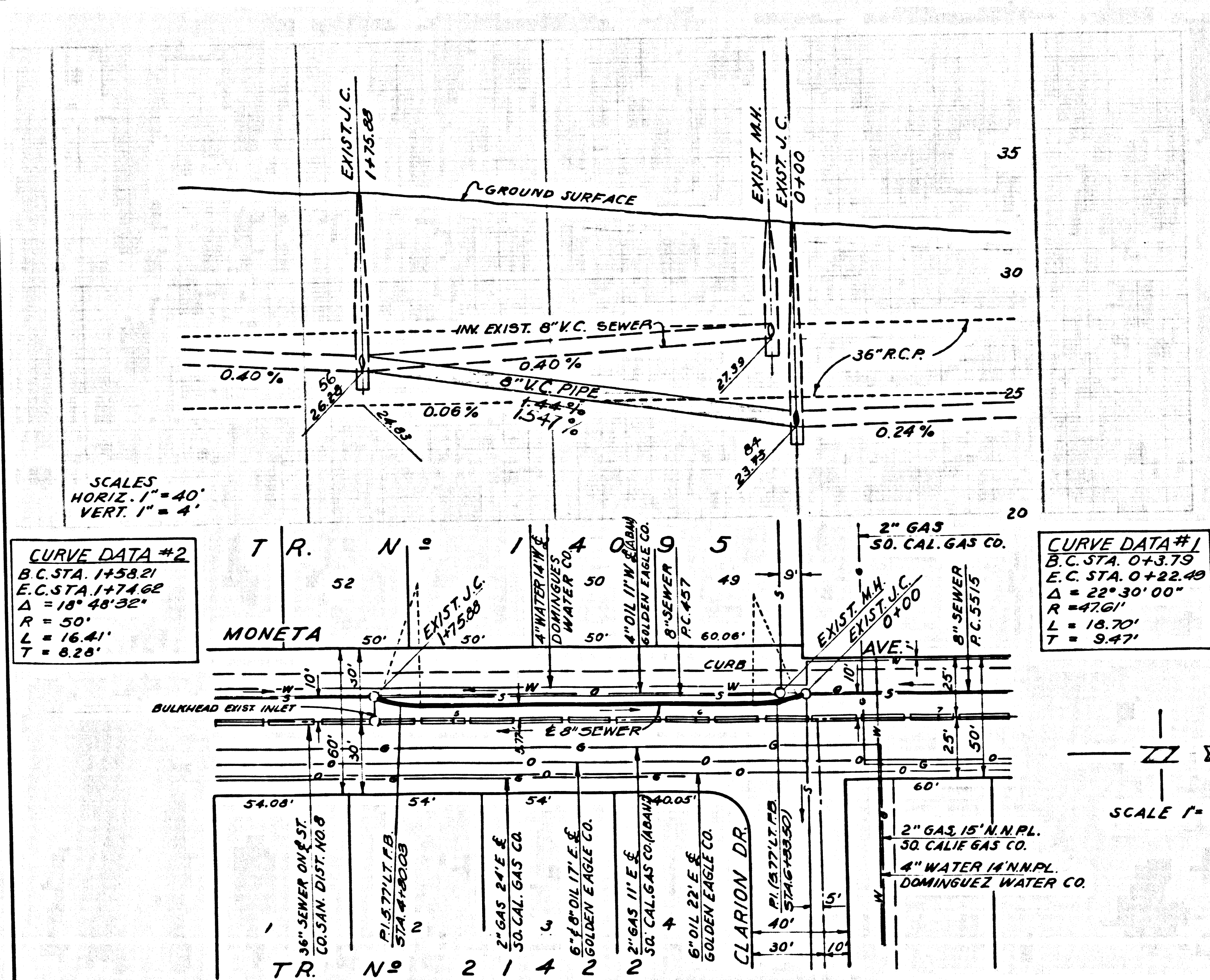
APPROVED BY Robert W. Miller REGIONAL ENGINEER

J. D. PARKHURST
CHIEF ENGINEER OF COUNTY
SANITATION DISTRICT NO. 8
APPROVED BY [Signature] OFFICE ENGINEER

NOTES:
WORK SHALL BE CONSTRUCTED ACCORDING TO STANDARD SPECIFICATIONS FOR PUBLIC WORKS CONSTRUCTION AND CITY ENGINEER SPECIAL PROVISIONS FOR THE CONSTRUCTION OF SANITARY SEWERS, DATED FEB. 18, 1964, AS REVISED, AND SHALL BE PROSECUTED ONLY IN THE PRESENCE OF THE CITY ENGINEER.
GRADES TO WHICH THIS IMPROVEMENT IS TO BE CONSTRUCTED ARE SHOWN ON PLANS AND PROFILES. GRADE POINTS FOR TOP OF CURB, CENTER LINE OF STREET OR CENTER LINE OF ALLEY ARE SHOWN BY CIRCLES ON PROFILES. AT ALL POINTS BETWEEN DESIGNATED POINTS THE GRADE SHALL BE ESTABLISHED SO AS TO CONFORM TO A STRAIGHT LINE DRAWN BETWEEN SAID DESIGNATED POINTS.
ELEVATIONS ARE IN FEET ABOVE U.S.C. & G.S. SEA LEVEL DATUM OF 1929.
THIS DRAWING AND THE DATA HEREON ARE HEREBY MADE A PART OF THE SPECIFICATIONS.

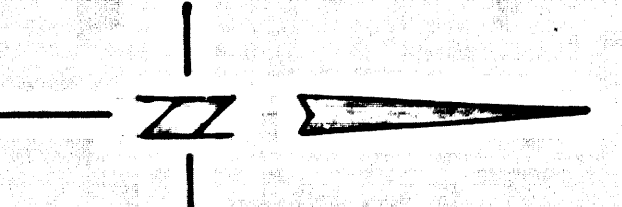
PLAN & PROFILE	DESIGNED BY	DATE
	A.W. SMITH, JR.	12/10/68
	REVISION	
	REVISION	
	REVISION	
	REVISION	
	REVISION	

40566



DETAIL OF EXISTING J.C.
AT STA 1+75.88

DETAIL OF EXISTING J.C.
AT STA 0+00



SCALE: 1/2"=1'-0"

CITY OF CARSON
BUILDING DISTRICT No. 12.05

B.M. SY 3914 ELEV. 28.828
L & T. ± 19' WEST & INT.
213TH ST. & MAIN ST.
GARDENA QUAD.

USE EXTRA STRENGTH PIPE. ALL PIPE IS STANDARD DEPTH EXCEPT AS NOTED. ALLOWABLE TRENCH WIDTH UNLIMITED.
USE MECHANICAL COMPRESSION JOINTS FOR ALL VITRIFIED CLAY PIPE SEWERS.
ALL STRUCTURES SHALL BE BRICK MANHOLES, EXCEPT AS NOTED.
USE STANDARD MANHOLE FRAMES AND COVERS, EXCEPT AS NOTED.
THE ENGINEER SHALL NOTIFY THE CONSTRUCTION DIVISION BY TELEPHONE MADISON 9-4747, EXT. 8181 AT LEAST 24 HOURS BEFORE STARTING ANY WORK UNDER THIS CONTRACT.
ALL STATE AND LOCAL TRENCH SAFETY ORDERS WILL BE RIGIDLY ENFORCED.
RESURFACING SCHEDULE: RESURFACE TRENCH WITHIN PAVED AREA WITH PREMIX TYPE II ASPHALT CONCRETE 8 INCHES IN THICKNESS.
FOURTY-EIGHT HOURS PRIOR TO STARTING CONSTRUCTION NOTIFY:
MR. JAMES GIBBELL 838-0581
SOUTHERN CALIFORNIA GAS CO. EXT. 524
DOMINGUEZ WATER CORPORATION
MR. B. JORDAN 779-2801 EXT. 519
OFFICE OF THE CITY ENGINEER OF CARSON 326-3450

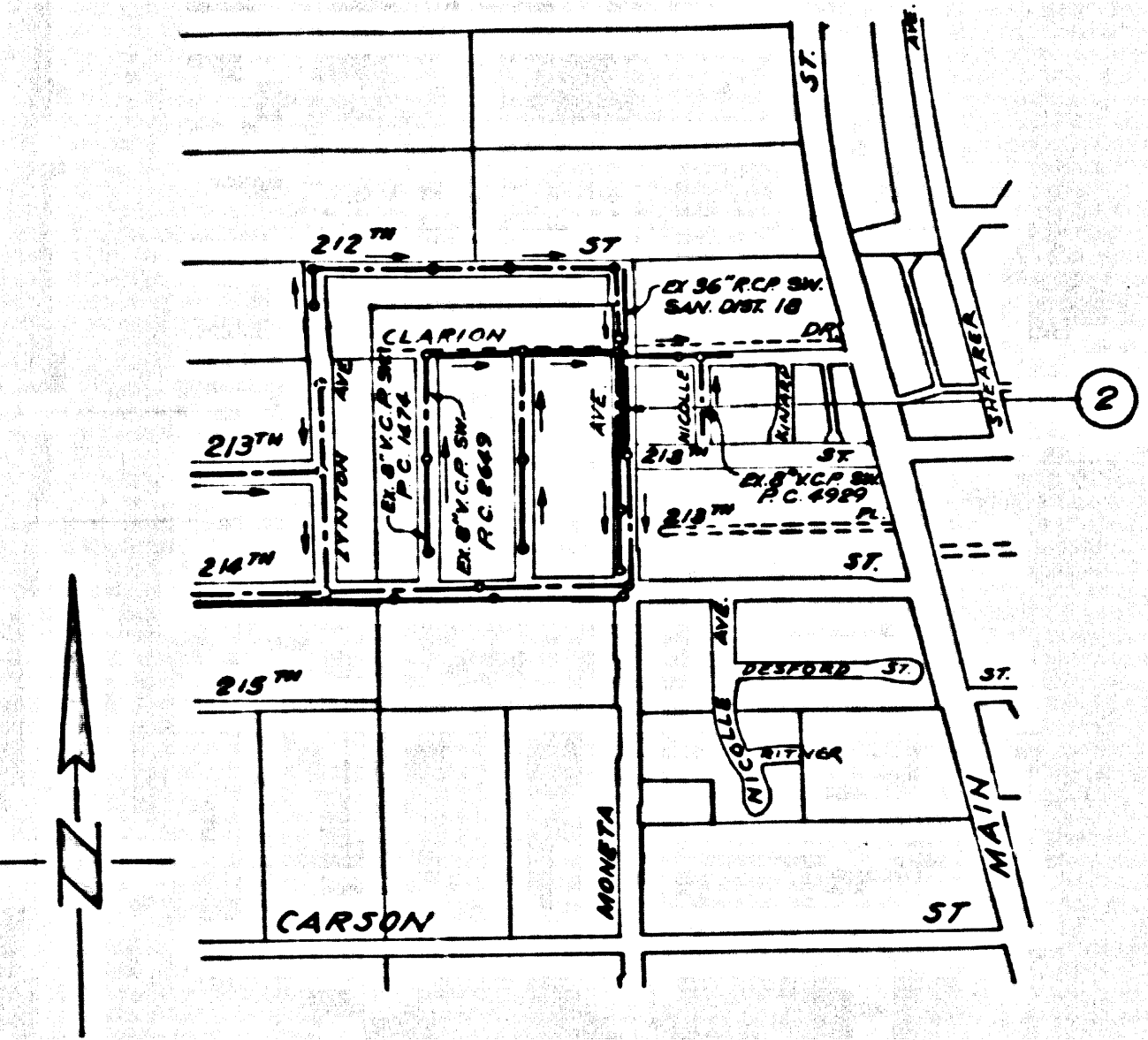
PRIVATE CONTRACT NO. 8156

PROFILE, ALIGNMENT AND GRADE OF
SANITARY SEWERS
TO BE CONSTRUCTED IN

MONETA AVE.

40565

1 SHEET, 2 PAGES



INDEX MAP
SCALE: 1"=600'

ALL CONCRETE CROSS GUTTERS, CURBS, GUTTERS, PAVEMENT, AND DRIVEWAYS SHALL BE TUMBLEB OR JACKED PER LOS ANGELES COUNTY ROAD DEPARTMENT REQUIREMENTS.
THE FOLLOWING LATEST REVISED STANDARD PLANS ON FILE IN THE OFFICE OF COUNTY ENGINEER SHALL APPLY IN THE CONSTRUCTION OF THIS PROJECT:

LEGEND	51
MINIMUM EXCAVATION SAFETY REQUIREMENTS	52
BRICK MANHOLE	53
MANHOLE FRAME AND COVER	519
MANHOLE STEP	520
MOORING FOR SEWER PIPE	521
SPECIAL SUPPORT AND PROTECTION	522
CRADLING AND ENCASEMENT	523
STANDARD WYE SUPPORT	524
STOPPER	525

SCALE VERT. 1"=4'
HORIZ. 1"=40'

PREPARED IN THE OFFICE OF THE CHIEF ENGINEER OF COUNTY
SANITATION DISTRICT NO. 8 OF LOS ANGELES COUNTY.

JOHN A. LAMBIE CITY ENGINEER

APPROVED BY *Robert W. Walker*
REGIONAL ENGINEER

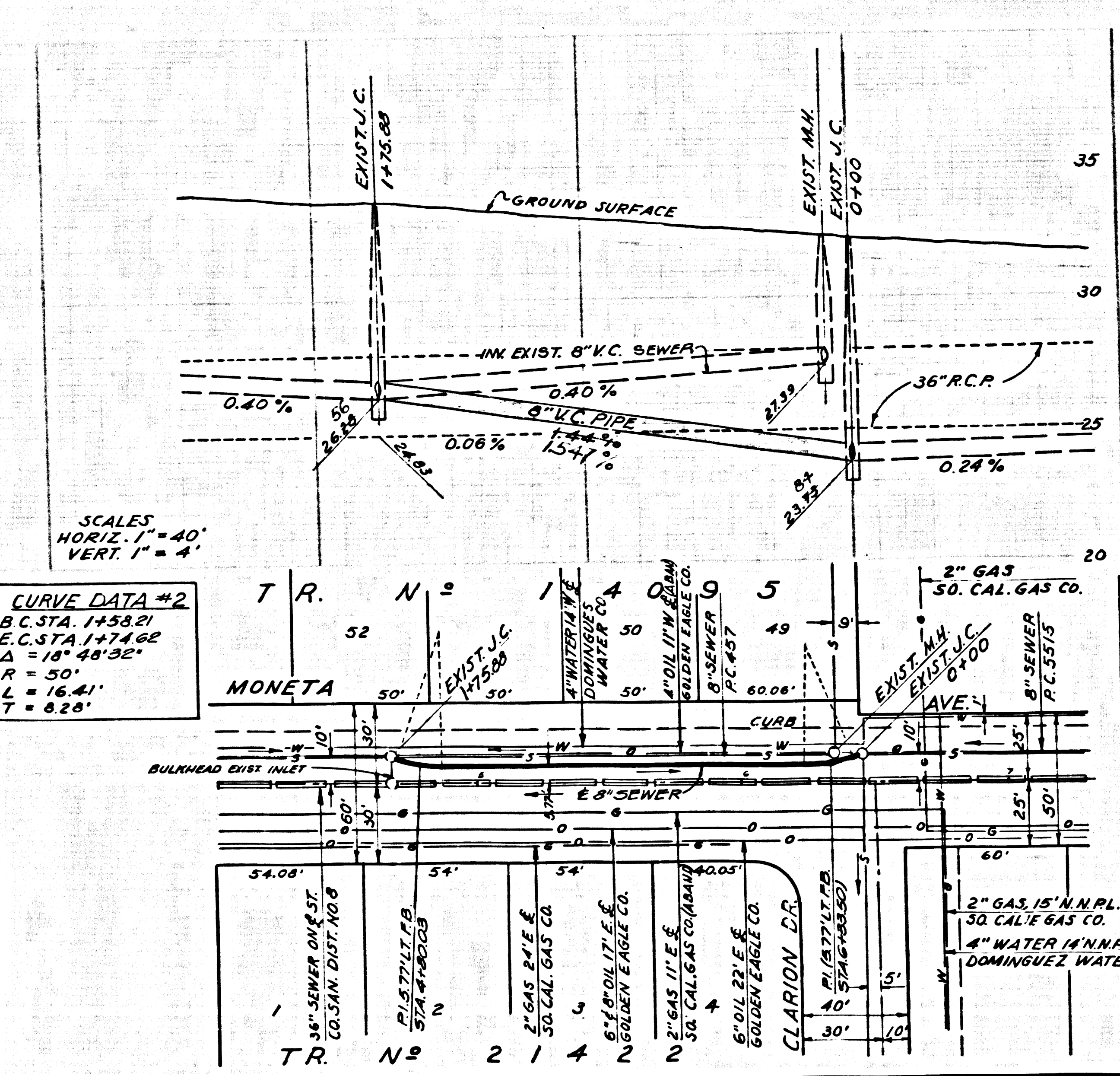
J. D. PARKHURST
CHIEF ENGINEER OF COUNTY
SANITATION DISTRICT NO. 8

APPROVED BY *J. D. Parkhurst*
OFFICE ENGINEER

NOTES:
WORK SHALL BE CONSTRUCTED ACCORDING TO STANDARD SPECIFICATIONS FOR PUBLIC WORKS CONSTRUCTION AND CITY ENGINEER SPECIAL PROVISIONS FOR THE CONSTRUCTION OF SANITARY SEWERS, DATED FEB. 16, 1964, AS REVISED.
GRADES TO WHICH THIS IMPROVEMENT IS TO BE CONSTRUCTED ARE SHOWN ON PLANS AND PROFILES. GRADE POINTS FOR TOP OF CURB, CENTER LINE OF STREET OR CENTER LINE OF ALLEY ARE SHOWN BY CIRCLES ON PROFILES. AT ALL POINTS BETWEEN DESIGNATED POINTS THE GRADE SHALL BE ESTABLISHED SO AS TO CONFORM TO A STRAIGHT LINE GRADE BETWEEN SAID DESIGNATED POINTS.
ELEVATIONS ARE IN FEET ABOVE U.S.C. & G.S. SEA LEVEL DATUM OF 1929.
THIS DRAWING AND THE DATA HEREON ARE HEREBY MADE A PART OF THE SPECIFICATIONS.

PLAN & PROFILE	BY	DATE		
			REVISED	DATE
	J. A. Lambie	1/25/68		
	R. W. Walker	1/25/68		
	J. D. Parkhurst	1/25/68		
	J. D. Parkhurst	1/25/68		

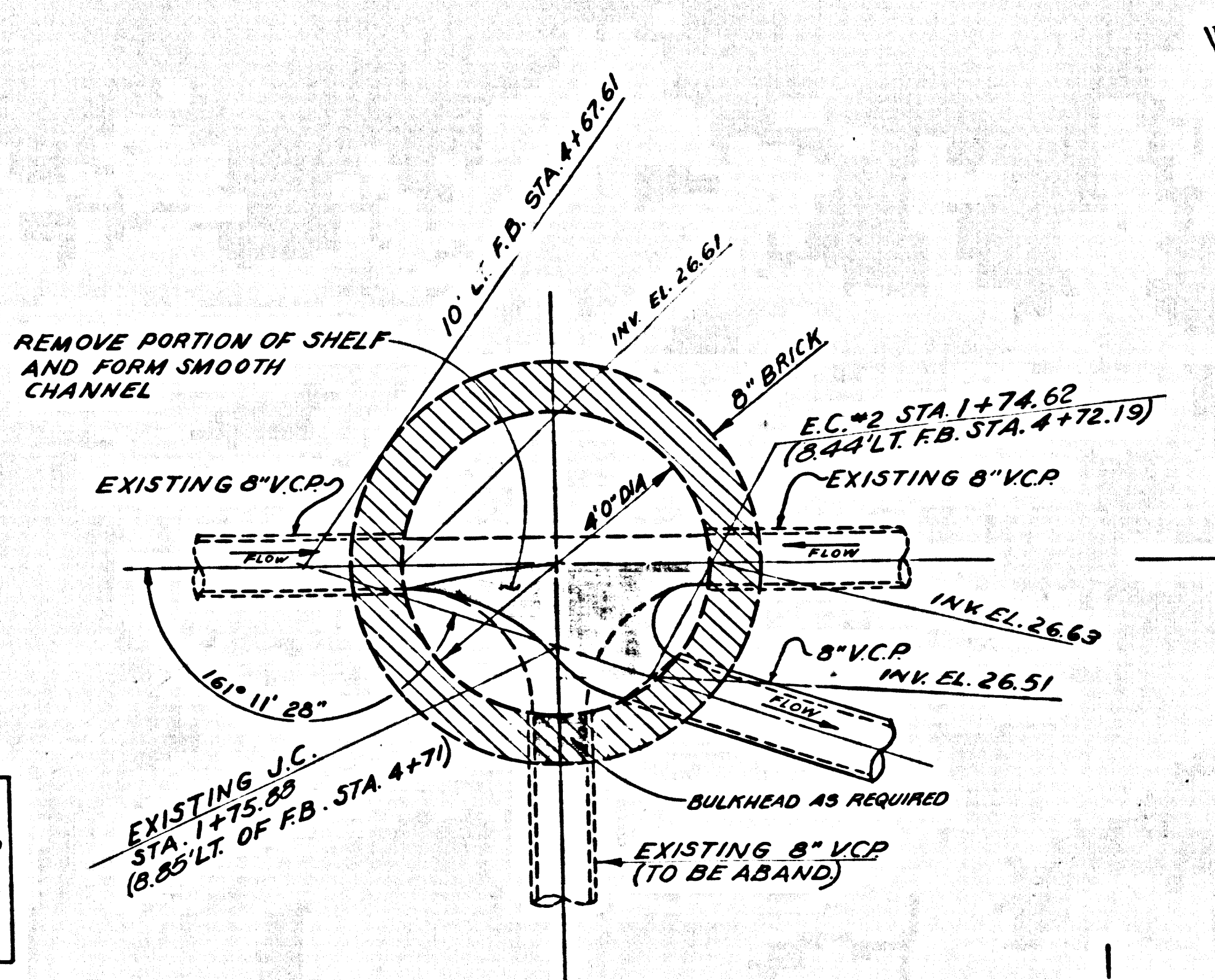
40566



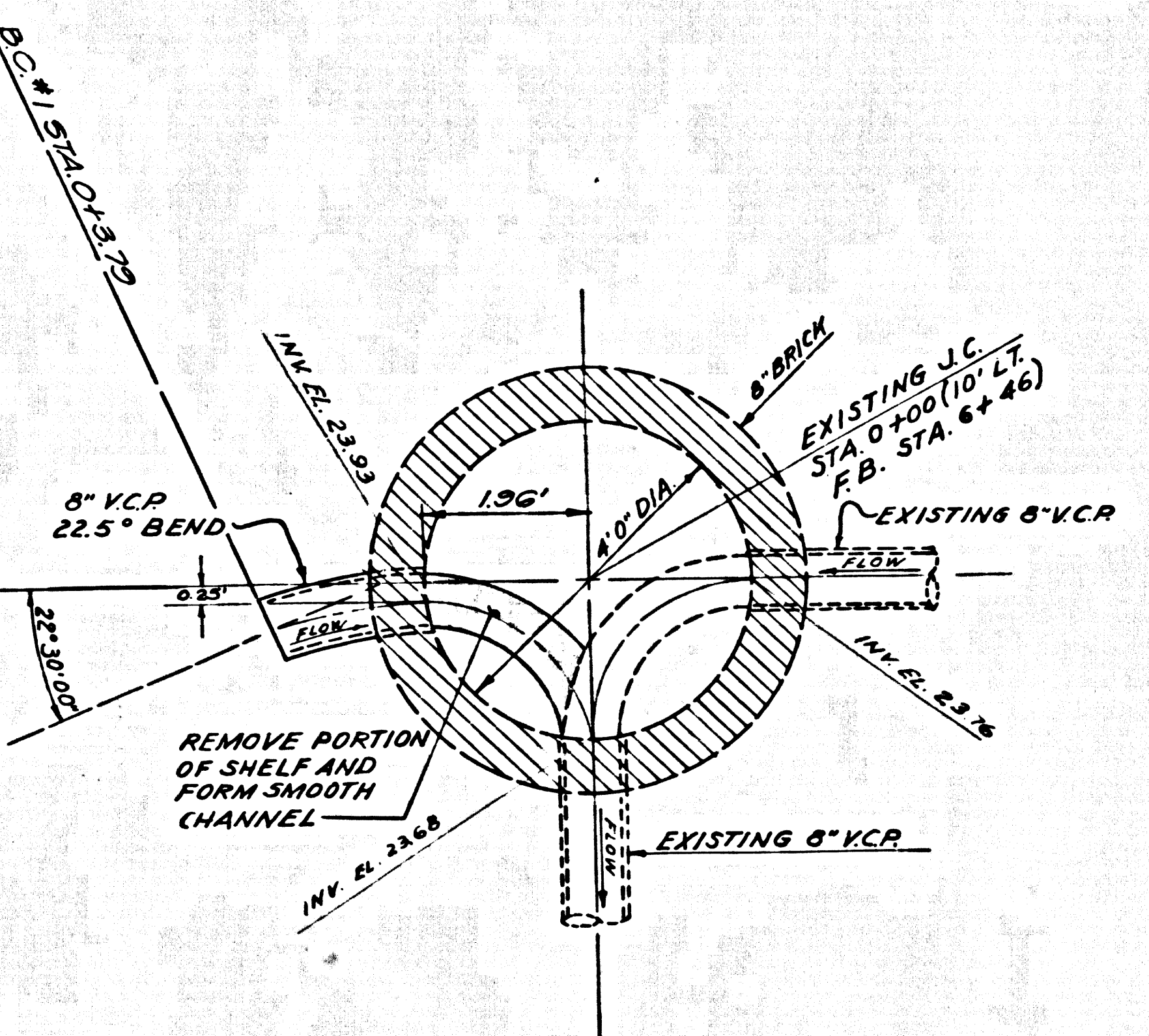
CURVE DATA #2
B.C. STA. 1+38.21
E.C. STA. 1+74.62
Δ = 18° 48' 36"
R = 50'
L = 16.41'
T = 8.28'

CURVE DATA #1
B.C. STA. 0+37.5
E.C. STA. 0+82.49
Δ = 22° 30' 00"
R = 47.01'
L = 19.70'
T = 9.47'

SCALE 1"=40'



DETAIL OF EXISTING J.C.
AT STA 1+75.88



DETAIL OF EXISTING J.C.
AT STA 0+00

SCALE: 1/2"=1'-0"