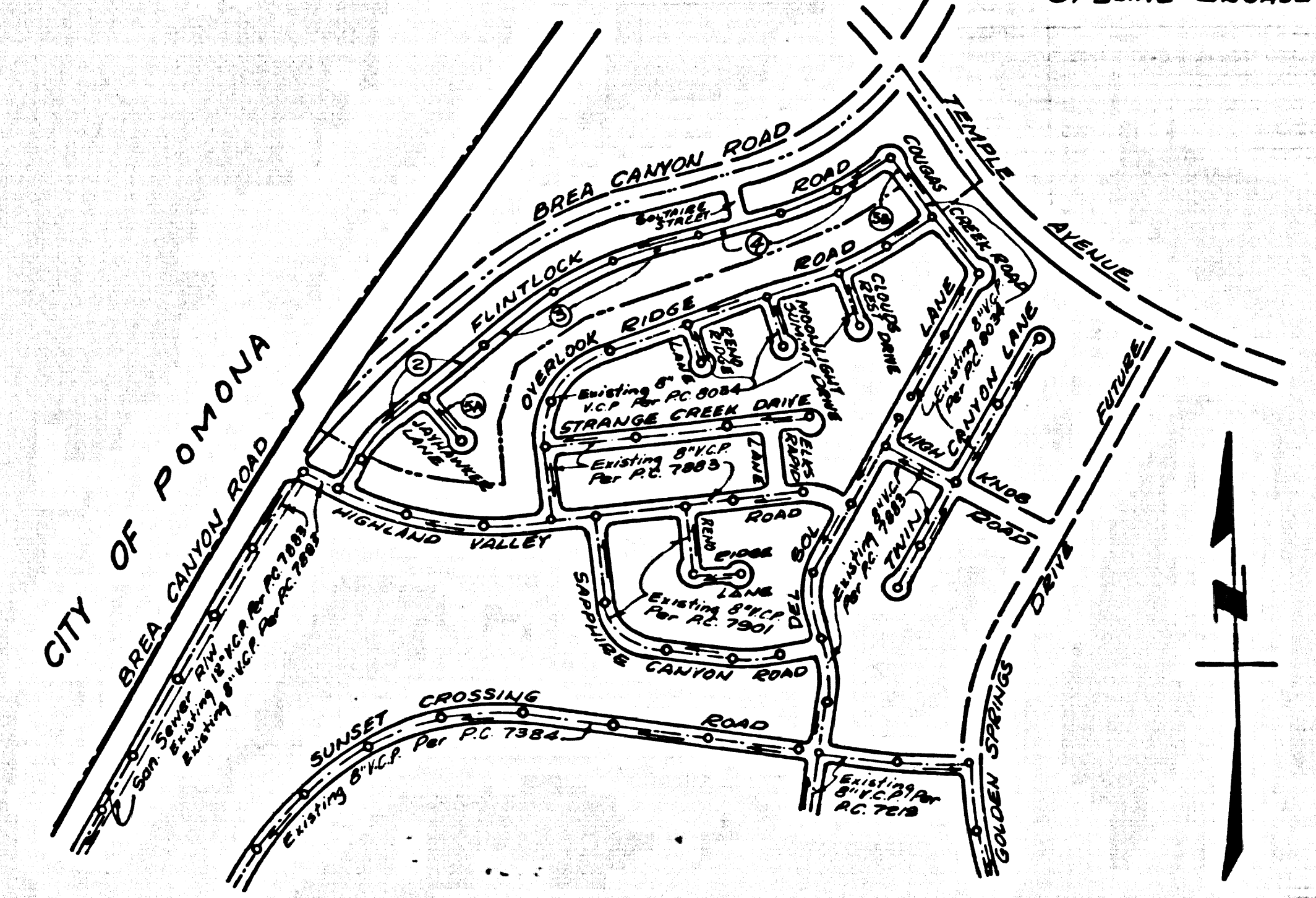


B.M. 86 2065 ELEV. 765.734
 R.O.B.M. TAG IN CONC. BASE OF
 FENCE POST 15 FT. S. OF GATE
 51 FT. W. BREA CANYON ROAD 110
 MI. N. DIAMOND BAR BOULEVARD.
 OTTERBEIN QUAD. 19 65

THE FOLLOWING LATEST REVISED STANDARD PLANS ON FILE IN THE OFFICE OF THE COUNTY ENGINEER SHALL APPLY IN THE CONSTRUCTION OF THIS PROJECT

| | |
|--|------|
| LEGEND | 5-1 |
| MINIMUM PUBLIC SAFETY REQUIREMENTS | 5-2 |
| BRICK MANHOLES | 5-3 |
| NEW REINFORCED PRECAST CONCRETE MANHOLES | 5-5 |
| REINFORCED PRECAST CONCRETE MANHOLES | 5-6 |
| MANHOLE FRAME AND COVER | 5-15 |
| MANHOLE STEP | 5-17 |
| BEDDING FOR SEWER PIPE | 5-21 |
| CRADLING AND ENCASEMENT | 5-23 |
| WYE OR Tee SUPPORT | 5-25 |
| ALLOWABLE TRENCH WIDTHS | 5-29 |
| SPECIAL ENCASEMENT | 5-29 |



INDEX MAP
 SCALE: 1" = 600'
 PC. 8159

NO CONNECTIONS FOR THE DISPOSAL OF INDUSTRIAL WASTE SHALL BE MADE TO SEWERS SHOWN ON THESE DRAWINGS WITHOUT WRITTEN PERMISSION FROM THE CHIEF ENGINEER AND GENERAL MANAGER OF THE COUNTY SANITARY DISTRICTS.

County Sanitation Districts shall be notified prior to the following on that required inspection can be made (Phone 297-1088 x 600-3000)

Acceptance of the project.

DOUBLE SCALE
 SAN DIMAS BLDG. DIST. NO. 10

- NOTE:
1. HOUSE STAKES ON THE PROPERTY LINE OR PROPERTY LINES PRODUCED AT RIGHT ANGLES TO THE SEWER LINE AT THE CENTER LINE OF EACH MANHOLE.
 2. NO REPRESENTATIVE OF THE COUNTY ENGINEER WILL SURVEY OR LAY OUT ANY PORTION OF THE WORK.
 3. THE PRIVATE ENGINEER SHALL FURNISH THE COUNTY ENGINEER WITH GRADE SHEETS AND STATIONING FOR ALL HOUSE LATERALS AND "T" OR "Y" BRANCHES AND SHALL PROVIDE STAKES FOR THEM AT THEIR PROPER LOCATIONS WITH STATIONING PLAINLY MARKED. ALL HOUSE LATERALS SHALL BE CONSTRUCTED IN A STRAIGHT ALIGNMENT AT RIGHT ANGLES FROM THE MAIN LINE SEWER EXCEPT AS SHOWN ON THE PLANS. HOUSE LATERALS FROM CHIMNEYS SHALL NOT HAVE AN ANGLE OF USE FROM 45° WITH THE MAIN LINE SEWER. ANY CHANGE IN ALIGNMENT SHALL BE REQUESTED IN WRITING BY THE PRIVATE ENGINEER.
 4. THE PRIVATE ENGINEER SHALL FURNISH THE HOUSE LATERAL DEPTH AT THE PROPERTY LINE BELOW THE TOP OF CURB ELEVATION FOR EACH HOUSE LATERAL ON THE GRADE SHEET.
 5. NO REVISIONS SHALL BE MADE IN THESE PLANS WITHOUT THE APPROVAL OF THE COUNTY ENGINEER.
 6. THE CONTRACTOR SHALL NOTIFY THE CONSTRUCTION DIVISION BY TELEPHONE, MADISON 9-4747, EXT. 81531, AT LEAST TWENTY-FOUR HOURS BEFORE STARTING ANY WORK UNDER THIS CONTRACT.
 7. ALL STRUCTURES SHALL BE EITHER BRICK MANHOLES PER 5-3 OR PRECAST CONCRETE MANHOLES 5-5 OR 5-6 EXCEPT AS NOTED.
 8. "T" OR "Y" BRANCHES MAY BE USED FOR CONNECTIONS TO MAIN LINE SEWERS EXCEPT AS NOTED.
 9. MANHOLE TOPS BE UNIMPROVED HEIGHTS OF WAY TO BE SIX INCHES ABOVE FINISHED GRADE.
 10. USE EXTRA STRENGTH PIPE, ALL PIPE IS STANDARD DEPTH EXCEPT AS NOTED.
 11. VITRIFIED CLAY PIPE JOINTS SHALL BE TYPE "D", "F" OR "G" PER STD. SPEC. SEC. 808-S
 12. ALLEYS AT ENDS OF H.L.'S INDICATE H.L.'S SHALL NOT BE CONSTRUCTED UPSTREAM OF THIS STATION.
 13. IF A POWER POLE IS WITHIN THREE FEET OF THE SEWER, THE SEWER SHALL BE ENCASED, PER 5-23
 14. IF DURING THE COURSE OF CONSTRUCTION IT IS DETERMINED THAT THERE IS LESS THAN FOUR FEET OF COVER OVER THE TOP OF A MAIN LINE OR HOUSE LATERAL V.C.P. SEWER WHICH IS NOT INDICATED ON THE PLANS, THE PIPE SHALL BE ENCASED PER 5-23, UNLESS OTHERWISE APPROVED BY THE COUNTY ENGINEER.
 15. HOUSE LATERALS TO BE CONSTRUCTED WITH INVERTS AT PROPERTY LINE. 8" MIN. COVER GRADE EXCEPT AS NOTED.
 16. SEWERS TO BE TESTED FOR LEAKAGE PER SECTION 308-S, 3 AND 7 STANDARD SPECIFICATIONS.
 17. BEFORE THE SECTION 308-S, THE STAKEMAN SPECIFICATIONS REGARDING SWIFTY CHANGES.
 18. SPECIAL BACKFILL IN DESIGNATED AREAS
 19. BACKFILL TRENCH AND REPLACE OTHER EARTH REMOVAL SO AS TO ACHIEVE THE NATURAL OR FINISHED GRADES AND SLOPES SHOWN ON THE GRADING PLAN APPROVED FOR THIS TRACT BY THE BUILDING AND SAFETY DIVISION.
 20. ALL BACKFILL AND EARTH REPLACEMENT SHALL BE COMPACTED TO A MINIMUM OF 90% OF MAXIMUM DENSITY PER A S.T.M. STANDARD METHOD OF TEST D-69-S-77 AS MODIFIED. ACCEPTABLE CERTIFICATION OF SUCH COMPACTION SHALL BE SUBMITTED TO THE CONSTRUCTION DIVISION.
 21. ALL JOINTS BETWEEN CAST IRON PIPE AND VITRIFIED CLAY PIPE SHALL BE MADE WITH A RUBBER SLEEVE JOINT, TYPE "C" OR "D" (WITH BUSHING IF NECESSARY) PER STANDARD SPECIFICATIONS SECTION 108-2.
 22. ALL WORDS IN CIRCLES AT ENDS OF H.L.'S INDICATE H.L.'S SHALL BE CONSTRUCTED WITH 1/4" RISE PER FT. TO P.L.
 23. RESURFACE ALL TRENCHES WITHIN PAVED AREAS TO MEET LA COUNTY ROAD DEPT. OR CALIF. STATE HIGHWAY REQUIREMENTS IN ACCORDANCE WITH PERMITS.

COLLECT CHARGES
 AS INDICATED

PROFILE ALIGNMENT AND GRADE OF
 SANITARY SEWERS PAGE 1
 CONSTRUCTED IN

TRACT NO. 27538
 PRIVATE CONTRACT NO. 8159

W.S. 39
 3 SHEETS, 5 PAGES
 SCALE: THE PLAN AUGUST 1968 40807

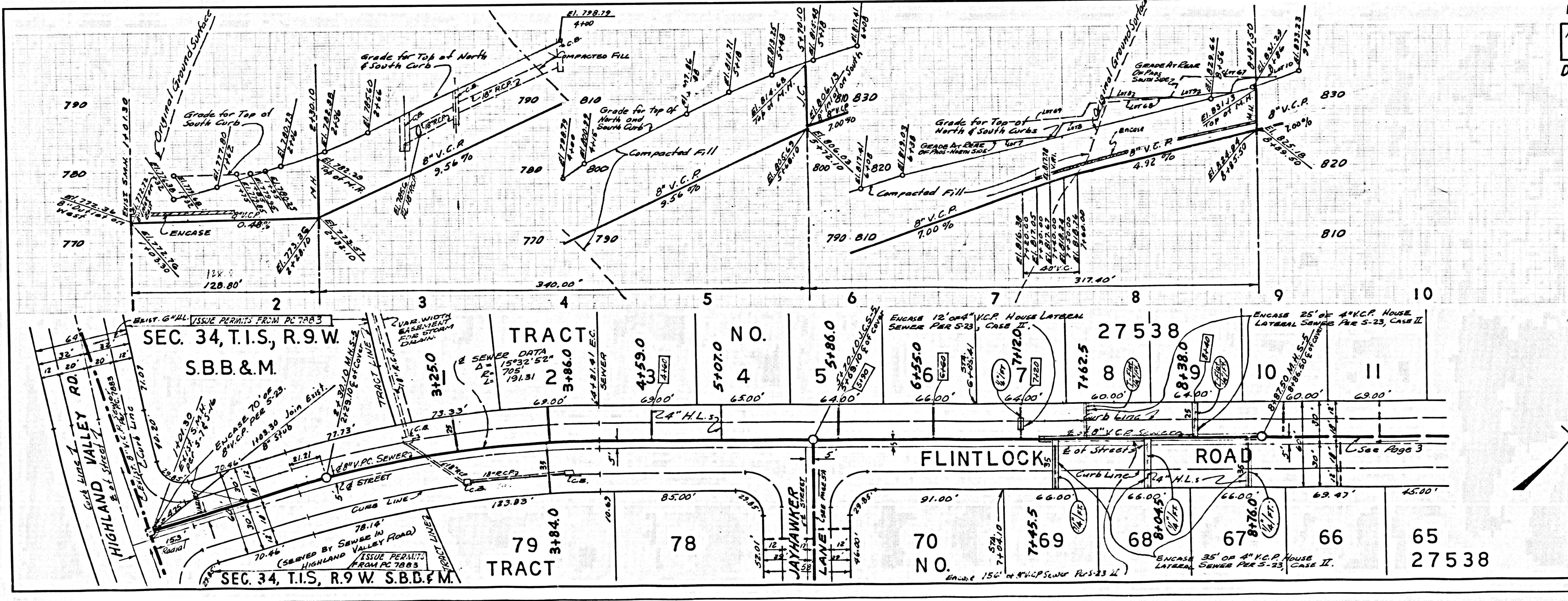
PREPARED IN THE OFFICES OF
 TRI-STATE ENGINEERING CO.

By Thomas A. Sullivan
 REG. C.E. NO. 12827
 FOR LEGEND SEE PLAN NO. S-1

NOTE:
 GRADES TO WHICH THE IMPROVEMENT IS TO BE CONSTRUCTED ARE SHOWN ON PLANS AND PROFILES. GRADE POINTS FOR TOP OF CURBS, CENTER LINE OF STREETS, OR CENTER LINE OF ALLEYS ARE SHOWN BY CIRCLES ON PROFILES AT ALL POINTS BETWEEN DESIGNATED POINTS. THE GRADE SHALL BE ESTABLISHED SO AS TO CONFORM TO A STRAIGHT LINE DRAWN BETWEEN SAID DESIGNATED POINTS. ELEVATIONS ARE IN FEET ABOVE U.S.C. & G.S. SEA LEVEL DATUM OF 1929.
 THIS DRAWING AND THE DATA HEREON ARE HEREBY MADE A PART OF THE SPECIFICATIONS FOR PUBLIC WORKS CONSTRUCTION AND SHALL BE CONSIDERED ACCORDING TO STANDARD SPECIFICATIONS FOR PUBLIC WORKS CONSTRUCTION AND SPECIAL PROVISIONS 308-S AS REVISIONS SHALL BE PROVIDED ONLY IN THE PRESENCE OF THE COUNTY ENGINEER.
 BEFORE WORK CAN BE STARTED, THE CONTRACTOR MUST OBTAIN A PERMIT TO EXCAVATE IN COUNTY STREETS FROM THE L.A. COUNTY ROAD DEPT., DISTRICT OFFICE NO. 1 AND PAY A FEE TO THE COUNTY ENGINEER, ROOM 302, COUNTY ENGINEERING BUILDING, 104 WEST SECOND STREET OR 204 S. SANTA ANE, SAN DIMAS, REGIONAL OFFICE, SUFFICIENT TO COVER THE COST OF CONSTRUCTION INSPECTION AND RECORD PLANS.
 APPROVAL OF THIS PLAN BY THE COUNTY OF LOS ANGELES DOES NOT CONSTITUTE A REPRESENTATION AS TO THE ACCURACY OF THE LOCATION OF OR THE EXISTENCE OR NON-EXISTENCE OF ANY UNDERGROUND UTILITY PIPE, OR STRUCTURE WITHIN THE LIMITS OF THE PROJECT. THIS NOTE APPLIES TO ALL PAGES.
 IF WORK IS TO BE DONE IN A STATE HIGHWAY, A PERMIT MUST BE OBTAINED FROM THE STATE OF CALIFORNIA, DIVISION OF HIGHWAYS, 128 SOUTH SPRING STREET, LOS ANGELES, CALIFORNIA.

COUNTY OF LOS ANGELES, CALIFORNIA
 JOHN A. LAMBE, COUNTY ENGINEER J. D. PARKHURST, CHIEF ENGINEER
 APPROVED BY: [Signature] APPROVED BY: [Signature]
 SAN DIMAS REGIONAL ENGINEER OFFICE ENGINEER

CHECKED BY: [Signature] 11/3/68
 REG. C.E. NO. 12827

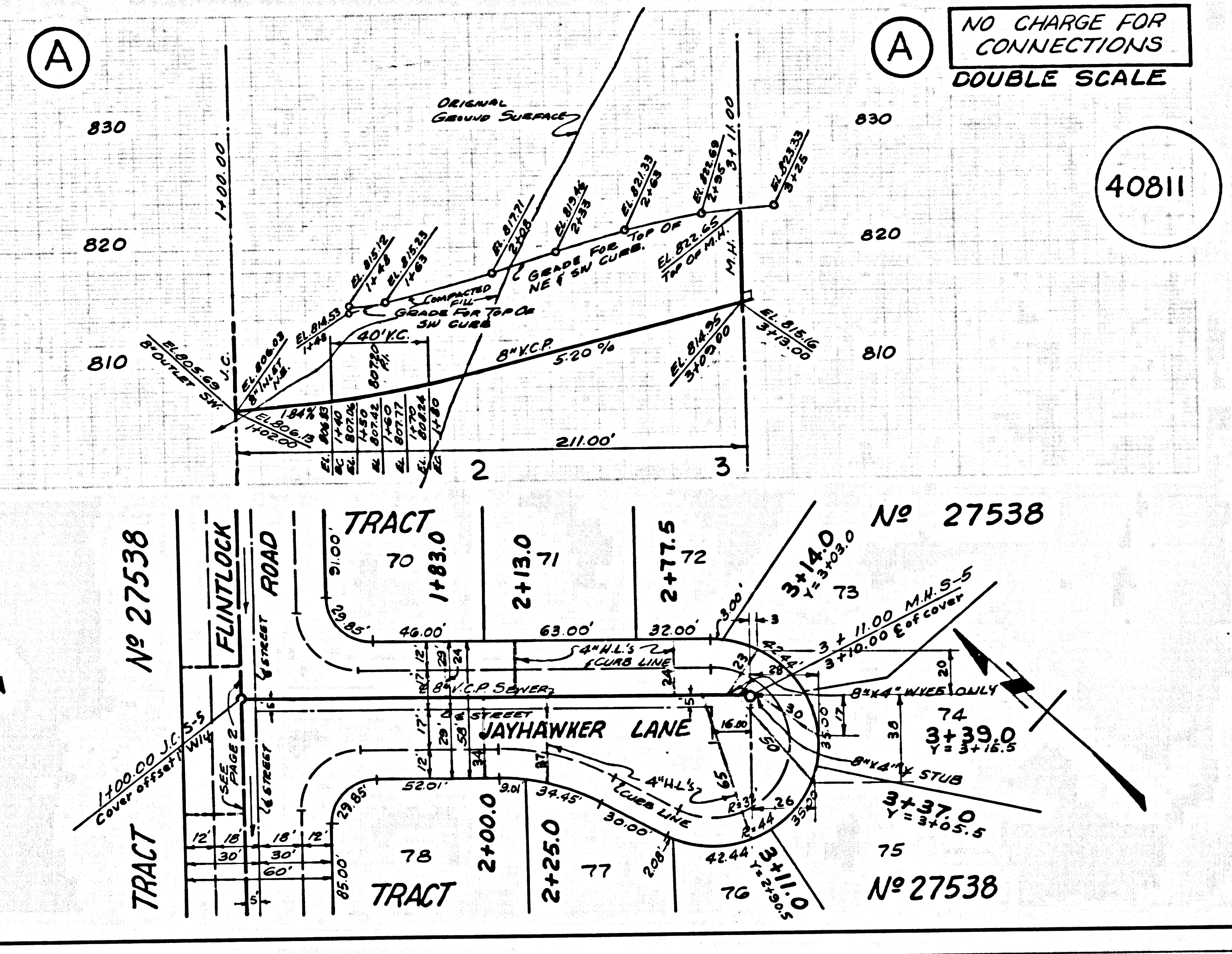
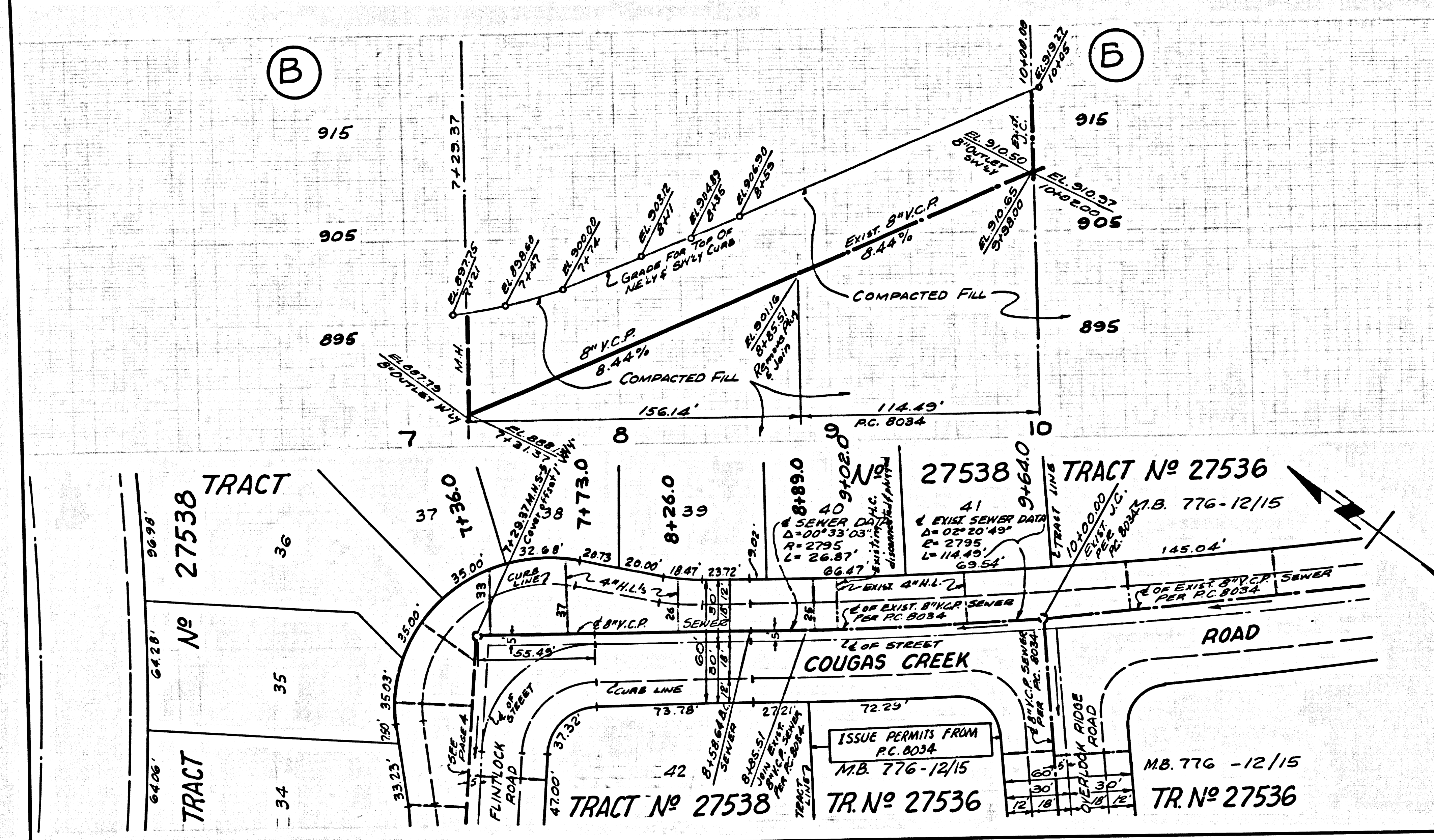


P.C. 8159 PAGE 2
 NO CHARGE FOR CONNECTIONS
 DOUBLE SCALE

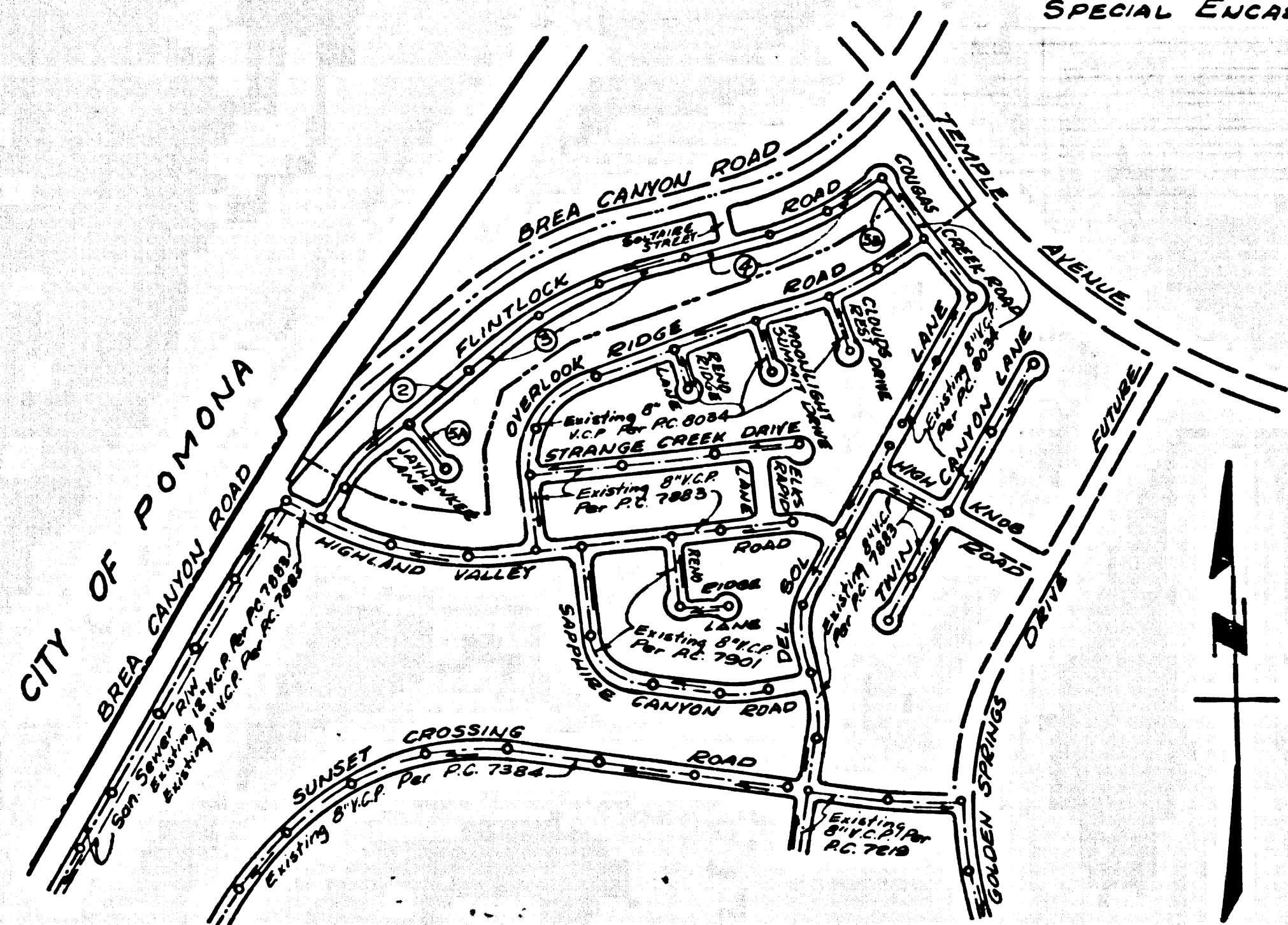
40808

NO CHARGE FOR CONNECTIONS
DOUBLE SCALE

40811



B.M. 86 2065 ELEV. 765.734
 R.D. B.M. TAG IN CONC. BASE OF
 FENCE POST 15 FT. S. OF GATE,
 51 FT. W. & BREA CANYON ROAD #10
 W. N. DIAMOND BAR BOULEVARD,
 OTTERBEIN QUAD. 19 65



INDEX MAP
 SCALE: 1" = 600'
 P.C. 8159

THE FOLLOWING LATEST REVISED STANDARD PLANS ON FILE IN THE OFFICE OF THE COUNTY ENGINEER SHALL APPLY IN THE CONSTRUCTION OF THIS PROJECT

| | |
|--|------|
| LEGEND | S-1 |
| MINIMUM PUBLIC SAFETY REQUIREMENTS | S-2 |
| BRICK MANHOLES | S-3 |
| NON REINFORCED PRECAST CONCRETE MANHOLES | S-4 |
| REINFORCED PRECAST CONCRETE MANHOLES | S-5 |
| MANHOLE FRAME AND COVER | S-6 |
| MANHOLE STEPS | S-7 |
| BEDDING FOR SEWER PIPE | S-8 |
| CRADING AND ENCASMENT | S-9 |
| W/E OR T/E SUPPORT | S-10 |
| ALLOWABLE TRENCH WIDTHS | S-11 |
| SPECIAL ENCASMENT | S-12 |

County Sanitation Districts shall be notified before the following work that required inspection can be made (Phone 557-1023 x 600-2007)

Acceptance of the project.

DOUBLE SCALE
 SAN DIMAS BLDG. DIST. NO. 10

- NOTES:
1. PROVIDE STAKES ON THE PROPERTY LINE OR PROPERTY LINES PRODUCED AT RIGHT ANGLES TO THE SEWER LINE AT THE CENTER LINE OF EACH MANHOLE.
 2. NO REPRESENTATIVE OF THE COUNTY ENGINEER WILL SURVEY OR LAY OUT ANY PORTION OF THE WORK.
 3. THE PRIVATE ENGINEER SHALL FURNISH THE COUNTY ENGINEER WITH GRADE SHEETS AND STATIONING FOR ALL HOUSE LATERALS AND "T" OR "Y" BRANCHES AND SHALL PROVIDE STAKES FOR THEM AT THESE PROPER LOCATIONS WITH STATIONING PLAINLY MARKED. ALL HOUSE LATERALS SHALL BE CONSTRUCTED IN A STRAIGHT ALIGNMENT AT RIGHT ANGLES FROM THE MAIN LINE SEWER EXCEPT AS SHOWN ON THE PLANS. HOUSE LATERALS FROM CHIMNEYS SHALL NOT HAVE AN ANGLE OF LESS THAN 45° WITH THE MAIN LINE SEWER. ANY CHANGE IN ALIGNMENT SHALL BE REQUESTED IN WRITING BY THE PRIVATE ENGINEER.
 4. THE PRIVATE ENGINEER SHALL FURNISH THE HOUSE LATERAL DEPTH AT THE PROPERTY LINE BELOW THE TOP OF CURB ELEVATION FOR EACH HOUSE LATERAL ON THE GRADE SHEET.
 5. NO REVISIONS SHALL BE MADE IN THESE PLANS WITHOUT THE APPROVAL OF THE COUNTY ENGINEER.
 6. THE CONTRACTOR SHALL NOTIFY THE CONSTRUCTION DIVISION BY TELEPHONE, MADISON 9-4747, EXT. 8151, AT LEAST TWENTY FOUR HOURS BEFORE STARTING ANY WORK UNDER THIS CONTRACT.
 7. ALL STRUCTURES SHALL BE EITHER BRICK MANHOLES PER S-3 OR PRECAST CONCRETE MANHOLES S-4, S-5 OR S-6 EXCEPT AS NOTED.
 8. "T" OR "Y" BRANCHES MAY BE USED FOR CONNECTIONS TO MAIN LINE SEWERS EXCEPT AS NOTED.
 9. MANHOLE TOPS IN UNIMPROVED PORTS OF WAY TO BE SIX INCHES ABOVE FINISHED GRADE.
 10. USE EXTRA STRENGTH PIPE. ALL PIPE IS STANDARD DEPTH EXCEPT AS NOTED.
 11. VITRIFIED CLAY PIPE JOINTS SHALL BE TYPE "D", "E" OR "F" PER STD. SPEC. SEC. 808-2.
 12. $\frac{1}{4}$ " FIGURES AT ENDS OF H.L.'S INDICATE H.L.'S SHALL NOT BE CONSTRUCTED UPSTREAM OF THIS STATION.
 13. IF A POWER POLE IS WITHIN THREE FEET OF THE SEWER, THE SEWER SHALL BE ENCASED, PER S-23, TWO FEET ON EITHER SIDE FROM THE POINT OF INTERFERENCE.
 14. IF DURING THE COURSE OF CONSTRUCTION IT IS DETERMINED THAT THERE IS LESS THAN FOUR FEET OF COVER OVER THE TOP OF A MAIN LINE OR HOUSE LATERAL V.C.P. SEWER WHICH IS NOT INDICATED ON THE PLANS, THE PIPE SHALL BE ENCASED PER S-23, UNLESS OTHERWISE APPROVED BY THE COUNTY ENGINEER.
 15. HOUSE LATERALS TO BE CONSTRUCTED WITH INVERTS AT PROPERTY LINE. 6" ... FEET BELOW CURB GRADE EXCEPT AS NOTED.
 16. SEWERS TO BE TESTED FOR LEAKAGE PER SECTION 308-2.3 AND 7 STANDARD SPECIFICATIONS.
 17. REFER TO SECTION 704-A-1, THE STANDARD SPECIFICATIONS REGARDING SANITARY ORDERS.
 18. SPECIAL BACKFILL IN DESIGNATED AREAS:
 - (A) BACKFILL TRENCH AND REPLACE OTHER EARTH REMOVAL SO AS TO ACHIEVE THE SETTED OR FINISHED GRADES AND SLOPES SHOWN ON THE GRADING PLAN APPROVED FOR THIS TRACT BY THE BUILDING AND SAFETY DIVISION.
 - (B) ALL BACKFILL AND EARTH REPLACEMENT SHALL BE COMPACTED TO A MINIMUM OF 90% OF MAXIMUM DENSITY PER A.S.T.M. STANDARD METHOD OF TEST D88-57 AS MODIFIED. ACCEPTABLE CERTIFICATION OF SUCH COMPACTION SHALL BE SUBMITTED TO THE CONSTRUCTION DIVISION.
 19. ALL JOINTS BETWEEN CAST IRON PIPE AND VITRIFIED CLAY PIPE SHALL BE MADE WITH A RUBBER SLEEVE JOINT, TYPE "C" OR "D" (WITH BUSHING IF NECESSARY) PER STANDARD SPECIFICATIONS SECTION 308-2.
 20. $\frac{1}{4}$ " FIGURES IN CIRCLES AT ENDS OF H.L.'S INDICATE H.L.'S SHALL BE CONST. WITH $\frac{1}{4}$ " RISE PER FT. TO R.L.
 21. $\frac{1}{4}$ " FIGURES IN CIRCLES AT ENDS OF H.L.'S INDICATE H.L.'S SHALL BE CONST. WITH $\frac{1}{4}$ " RISE PER FT. TO R.L.
 22. RESURFACE ALL TRENCHES WITHIN PAVED AREAS TO MEET LA COUNTY ROAD DEPT. OR CALIF. STATE HIGHWAY REQUIREMENTS IN ACCORDANCE WITH PERMITS.

COLLECT CHARGES
 AS INDICATED

PROFILE ALIGNMENT AND GRADE OF
 SANITARY SEWERS PAGE 1
 CONSTRUCTED IN

TRACT NO. 27538
 PRIVATE CONTRACT NO. 8159

W.S. 39
 3 SHEETS, 5 PAGES
 SCALE: VERT. 1" = 4' HORIZ. 1" = 40' AUGUST 1965 40807

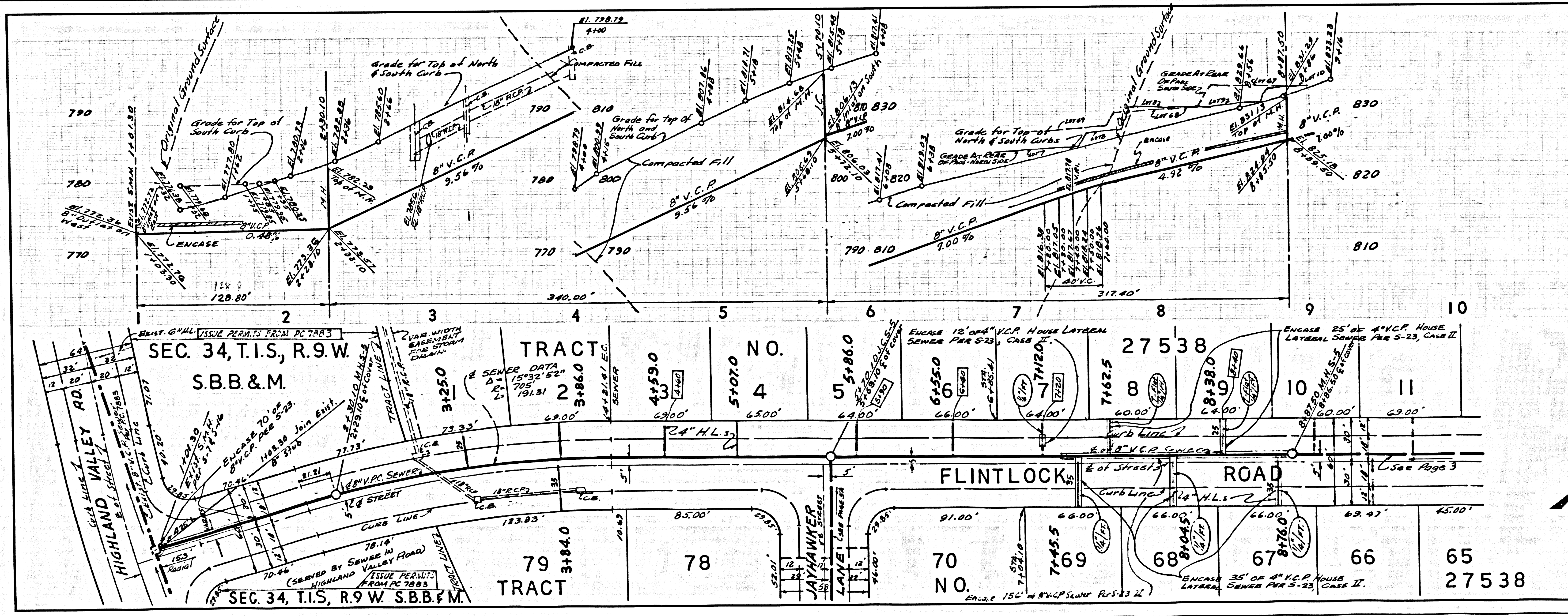
PREPARED IN THE OFFICES OF
 TRI-STATE ENGINEERING CO.
 BY: Thomas J. Sullivan
 REG. C. E. NO. 12827

FOR LEGEND SEE PLAN NO. S-1

NOTE: GRADES TO WHICH THIS IMPROVEMENT IS TO BE CONSTRUCTED ARE SHOWN ON PLANS AND PROFILE. GRADE POINTS FOR TOP OF CURBS, CENTER LINE OF STREETS, OR CENTER LINE OF ALLEYS ARE SHOWN BY CIRCLES ON PROFILES. AT ALL POINTS BETWEEN DESIGNATED POINTS THE GRADE SHALL BE ESTABLISHED SO AS TO CONFORM TO A STRAIGHT LINE DRAWN BETWEEN SAID DESIGNATED POINTS. ELEVATIONS ARE IN FEET ABOVE U.L.C. & G.S. SEA LEVEL DATUM OF 1929. THIS DRAWING AND THE DATA HEREON ARE HEREBY MADE A PART OF THE SPECIFICATIONS. WORK SHALL BE CONSTRUCTED ACCORDING TO STANDARD SPECIFICATIONS FOR PUBLIC WORKS CONSTRUCTION AND SPECIAL PROVISIONS SHOWN HEREON. BEFORE WORK CAN BE STARTED, THE CONTRACTOR MUST OBTAIN A PERMIT TO EXCAVATE IN COUNTY STREETS FROM THE L.A. COUNTY ROAD DEPT., DISTRICT OFFICE NO. 10, AND PAY A FEE TO THE COUNTY ENGINEER, ROOM 308, COUNTY ENGINEERING BUILDING, 108 WEST SECOND STREET OR 201 W. BOUTWELL AVE., SAN DIMAS. REGIONAL OFFICE, SUFFICIENT TO COVER THE COST OF CONSTRUCTION INSPECTION AND RECORD PLANS. APPROVAL OF THIS PLAN BY THE COUNTY OF LOS ANGELES DOES NOT CONSTITUTE A REPRESENTATION AS TO THE ACCURACY OF THE LOCATION OF OR THE EXISTENCE OR NON-EXISTENCE OF ANY UNDERGROUND UTILITY PIPE, OR STRUCTURE WITHIN THE LIMITS OF THIS PROJECT. THIS NOTE APPLIES TO ALL PAGES. IF WORK IS TO BE DONE IN A STATE HIGHWAY, A PERMIT MUST BE OBTAINED FROM THE STATE OF CALIFORNIA, DIVISION OF HIGHWAYS, 120 SOUTH SPRING STREET, LOS ANGELES, CALIFORNIA.

COUNTY OF LOS ANGELES, CALIFORNIA
 JOHN A. LAMBE, COUNTY ENGINEER J. D. PARKHURST, CHIEF ENGINEER
 APPROVED BY: [Signature] APPROVED BY: [Signature]
 SAN DIMAS REGIONAL ENGINEER OFFICE ENGINEER

CHECKED BY: [Signature] 11/3/65
 REG. C. E. NO. 10283



P. C. 8159 PAGE 2
 NO CHARGE FOR CONNECTIONS
 DOUBLE SCALE

40808

NO CHARGE FOR CONNECTIONS
DOUBLE SCALE

40811

