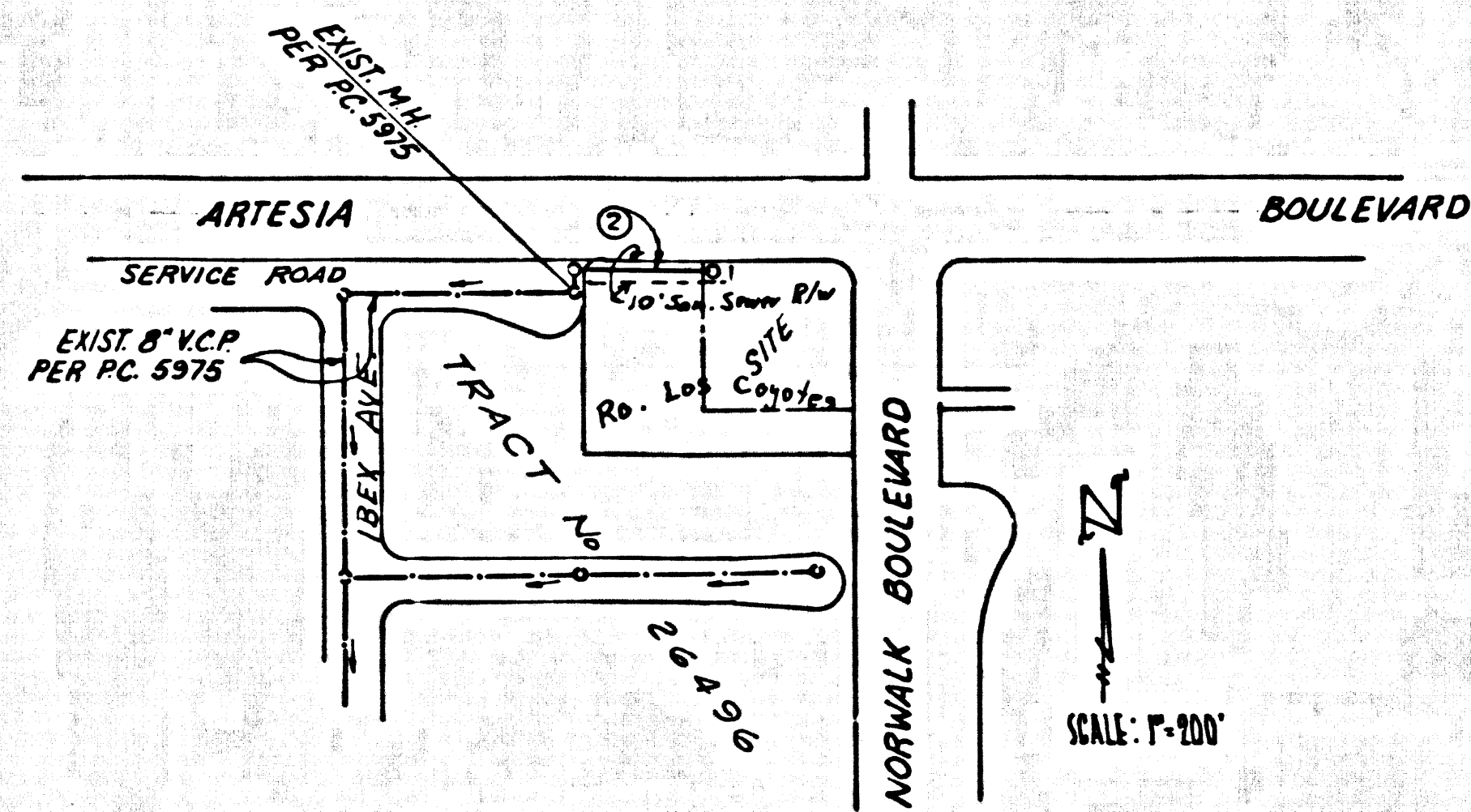


B.M. BY 1480 ELEV. 56.918  
 L & SPK IN CONC APRON ON SE COR ARTESIA BLVD  
 & PIONEER BLVD 54' x 5 & 62' x E C/L INT  
 ARTESIA QUAD. 19 65



INDEX MAP  
 P.C. 8160  
 R/W S/D ARTESIA BLVD.

County Sanitation Districts shall be notified prior to the following of that required inspection can be made (Phone 688-3888 - 636-3007)

Acceptance of the project.  
 No connections for the disposal of industrial wastes shall be made to sewers shown on these drawings without written permission from the Chief Engineer and General Manager of the County Sanitation Districts.

ARTESIA BLDG. DIST. NO. 4.09

PROFILE ALIGNMENT AND GRADE OF  
 SANITARY SEWERS P.C. 8160  
 IN PAGE 1

R/W S/D ARTESIA BLVD.

PRIVATE CONTRACT NO. 8160

W.S. 31  
 SHEET : 4 PAGES

SCALE: HORIZ. 1" = 40' VERT. 1" = 4'

AUG. 1968  
 PREPARED IN THE OFFICES OF  
 HOLM TAIT & ASSOCIATES INC.  
 280 NORTH WILSHIRE, ANAHEIM, CALIFORNIA

40812

FOR LEGEND SEE PLAN NO. S-1

- NOTE:
1. PROVIDE STAKES ON THE PROPERTY LINE OR PROPERTY LINES PRODUCED AT RIGHT ANGLES TO THE SEWER LINE AT THE CENTER LINE OF EACH MANHOLE.
  2. NO REPRESENTATIVE OF THE CITY ENGINEER WILL SURVEY OR LAY OUT ANY PORTION OF THE WORK.
  3. THE PRIVATE ENGINEER SHALL NOTIFY THE CITY ENGINEER WITH GRADE SHEETS AND STATIONING FOR ALL HOUSE LATERALS AND "T" OR "Y" BRANCHES AND SMALL PROVIDE STAKES FOR THEM AT THEIR PROPER LOCATIONS WITH STATIONING PLAINLY MARKED. ALL HOUSE LATERALS SHALL BE CONSTRUCTED IN A STRAIGHT ALIGNMENT AT RIGHT ANGLES FROM THE MAIN LINE SEWER EXCEPT AS SHOWN ON THE PLANS. HOUSE LATERALS FROM CHIMNEYS SHALL NOT HAVE AN ANGLE OR LESS THAN 45° WITH THE MAIN LINE SEWER. ANY CHANGE IN ALIGNMENT SHALL BE REQUESTED IN WRITING BY THE PRIVATE ENGINEER.
  4. THE PRIVATE ENGINEER SHALL FURNISH THE HOUSE LATERAL DEPTH AT THE PROPERTY LINE BELOW THE TOP OF CURB ELEVATION FOR EACH HOUSE LATERAL ON THE GRADE SHEET.
  5. NO REVISIONS SHALL BE MADE IN THESE PLANS WITHOUT THE APPROVAL OF THE CITY ENGINEER.
  6. THE CONTRACTOR SHALL NOTIFY THE CONSTRUCTION DIVISION BY TELEPHONE, MADISON 9-4740, EXT. 8158, AT LEAST TWENTY-FOUR HOURS BEFORE STARTING ANY WORK UNDER THIS CONTRACT.
  7. ALL STRUCTURES SHALL BE EITHER BRICK MANHOLES PER S-2 OR PRECAST CONCRETE MANHOLES PER S-2, EXCEPT AS NOTED.
  8. "T" OR "Y" BRANCHES MAY BE USED FOR CONNECTIONS TO MAINLINE SEWERS EXCEPT AS NOTED.
  9. MANHOLE DEPTHS ARE UNLESS OTHERWISE INDICATED AS SHOWN ON THE GRADE SHEETS.
  10. USE EXTRA STRENGTH PIPE. ALL PIPE IS STANDARD DEPTH EXCEPT AS NOTED.
  11. RITTENED CLAY PIPE JOINTS SHALL BE FINE "D" OR "A" PER STD SPEC. SEE S-2. SENER PIPE RENEELS SHALL CONFORM TO S-21.
  12. IF A POWER POLE IS WITHIN THREE FEET OF THE SEWER, THE SEWER SHALL BE ENCASED, PER S-23, TWO FEET ON EACH SIDE FROM THE POINT OF INTERFERENCE.
  13. IF DURING THE COURSE OF CONSTRUCTION IT IS DETERMINED THAT THERE IS LESS THAN FOUR FEET OF COVER OVER THE TOP OF A MAIN LINE OR HOUSE LATERAL V.C.P. SEWER WHICH IS NOT INDICATED ON THE PLANS, THE PIPE SHALL BE ENCASED PER S-23, UNLESS OTHERWISE APPROVED BY THE CITY ENGINEER.
  14. HOUSE LATERALS TO BE CONSTRUCTED WITH INVERTS AT PROPERTY LINE A FEET BELOW CURB GRADE EXCEPT AS NOTED.
  15. REINFORCE ALL TRENCHES WITHIN HAVED AREAS TO MEET L.A. COUNTY SOILD DEPT. OR CALIFORNIA STATE HIGHWAY REQUIREMENTS IN ACCORDANCE WITH PERMITS.
  16. SEWERS TO BE TESTED FOR LEAKAGE PER SECTION 306-2.3.7 UNIFORM STANDARD SPECIFICATIONS.
  17. REFER TO SECTION 7-10.4.1 OF THE STD SPEC. REGARDING SAFETY ORDERS.
  18. SPECIAL BACKFILL IN DESIGNATED AREAS:
    - (a) BACKFILL TRENCH AND REPLACE OTHER EARTH REMOVED SO AS TO ACHIEVE THE NATURAL OR FINISHED GRADES AND SLOPES SHOWN ON THE GRADING PLAN APPROVED FOR THIS TRACT BY THE BUILDING AND SAFETY DIVISION.
    - (b) ALL BACKFILL AND EARTH REPLACED SHALL BE COMPACTED TO A MINIMUM OF 90% OF MAXIMUM DENSITY PER A.S.T.M. STANDARD METHOD OF TEST D99-57 AS MODIFIED. ACCEPTABLE CERTIFICATION OF SUCH COMPACTION SHALL BE SUBMITTED TO THE CONSTRUCTION DIVISION.

THE FOLLOWING LATEST REVISED STANDARD PLANS ON FILE IN THE OFFICE OF THE COUNTY ENGINEER SHALL APPLY IN THE CONSTRUCTION OF THIS PROJECT:

SECTION	MINIMUM PUBLIC SAFETY REQUIREMENTS	S-1
BRICK MANHOLE	REINFORCED PRECAST CONCRETE MANHOLE	S-2
REINFORCED PRECAST CONCRETE MANHOLE	REINFORCED PRECAST CONCRETE MANHOLE	S-3
MANHOLE FRAME AND COVER	STANDARD MANHOLE SIEB	S-4
REINFORCED PRECAST CONCRETE MANHOLE	REINFORCED PRECAST CONCRETE MANHOLE	S-5
REINFORCED PRECAST CONCRETE MANHOLE	REINFORCED PRECAST CONCRETE MANHOLE	S-6
REINFORCED PRECAST CONCRETE MANHOLE	REINFORCED PRECAST CONCRETE MANHOLE	S-7
REINFORCED PRECAST CONCRETE MANHOLE	REINFORCED PRECAST CONCRETE MANHOLE	S-8
REINFORCED PRECAST CONCRETE MANHOLE	REINFORCED PRECAST CONCRETE MANHOLE	S-9
REINFORCED PRECAST CONCRETE MANHOLE	REINFORCED PRECAST CONCRETE MANHOLE	S-10
REINFORCED PRECAST CONCRETE MANHOLE	REINFORCED PRECAST CONCRETE MANHOLE	S-11
REINFORCED PRECAST CONCRETE MANHOLE	REINFORCED PRECAST CONCRETE MANHOLE	S-12
REINFORCED PRECAST CONCRETE MANHOLE	REINFORCED PRECAST CONCRETE MANHOLE	S-13
REINFORCED PRECAST CONCRETE MANHOLE	REINFORCED PRECAST CONCRETE MANHOLE	S-14
REINFORCED PRECAST CONCRETE MANHOLE	REINFORCED PRECAST CONCRETE MANHOLE	S-15
REINFORCED PRECAST CONCRETE MANHOLE	REINFORCED PRECAST CONCRETE MANHOLE	S-16
REINFORCED PRECAST CONCRETE MANHOLE	REINFORCED PRECAST CONCRETE MANHOLE	S-17
REINFORCED PRECAST CONCRETE MANHOLE	REINFORCED PRECAST CONCRETE MANHOLE	S-18
REINFORCED PRECAST CONCRETE MANHOLE	REINFORCED PRECAST CONCRETE MANHOLE	S-19
REINFORCED PRECAST CONCRETE MANHOLE	REINFORCED PRECAST CONCRETE MANHOLE	S-20
REINFORCED PRECAST CONCRETE MANHOLE	REINFORCED PRECAST CONCRETE MANHOLE	S-21
REINFORCED PRECAST CONCRETE MANHOLE	REINFORCED PRECAST CONCRETE MANHOLE	S-22
REINFORCED PRECAST CONCRETE MANHOLE	REINFORCED PRECAST CONCRETE MANHOLE	S-23
REINFORCED PRECAST CONCRETE MANHOLE	REINFORCED PRECAST CONCRETE MANHOLE	S-24
REINFORCED PRECAST CONCRETE MANHOLE	REINFORCED PRECAST CONCRETE MANHOLE	S-25
REINFORCED PRECAST CONCRETE MANHOLE	REINFORCED PRECAST CONCRETE MANHOLE	S-26
REINFORCED PRECAST CONCRETE MANHOLE	REINFORCED PRECAST CONCRETE MANHOLE	S-27
REINFORCED PRECAST CONCRETE MANHOLE	REINFORCED PRECAST CONCRETE MANHOLE	S-28
REINFORCED PRECAST CONCRETE MANHOLE	REINFORCED PRECAST CONCRETE MANHOLE	S-29
REINFORCED PRECAST CONCRETE MANHOLE	REINFORCED PRECAST CONCRETE MANHOLE	S-30
REINFORCED PRECAST CONCRETE MANHOLE	REINFORCED PRECAST CONCRETE MANHOLE	S-31
REINFORCED PRECAST CONCRETE MANHOLE	REINFORCED PRECAST CONCRETE MANHOLE	S-32
REINFORCED PRECAST CONCRETE MANHOLE	REINFORCED PRECAST CONCRETE MANHOLE	S-33
REINFORCED PRECAST CONCRETE MANHOLE	REINFORCED PRECAST CONCRETE MANHOLE	S-34
REINFORCED PRECAST CONCRETE MANHOLE	REINFORCED PRECAST CONCRETE MANHOLE	S-35
REINFORCED PRECAST CONCRETE MANHOLE	REINFORCED PRECAST CONCRETE MANHOLE	S-36
REINFORCED PRECAST CONCRETE MANHOLE	REINFORCED PRECAST CONCRETE MANHOLE	S-37
REINFORCED PRECAST CONCRETE MANHOLE	REINFORCED PRECAST CONCRETE MANHOLE	S-38
REINFORCED PRECAST CONCRETE MANHOLE	REINFORCED PRECAST CONCRETE MANHOLE	S-39
REINFORCED PRECAST CONCRETE MANHOLE	REINFORCED PRECAST CONCRETE MANHOLE	S-40
REINFORCED PRECAST CONCRETE MANHOLE	REINFORCED PRECAST CONCRETE MANHOLE	S-41
REINFORCED PRECAST CONCRETE MANHOLE	REINFORCED PRECAST CONCRETE MANHOLE	S-42
REINFORCED PRECAST CONCRETE MANHOLE	REINFORCED PRECAST CONCRETE MANHOLE	S-43
REINFORCED PRECAST CONCRETE MANHOLE	REINFORCED PRECAST CONCRETE MANHOLE	S-44
REINFORCED PRECAST CONCRETE MANHOLE	REINFORCED PRECAST CONCRETE MANHOLE	S-45
REINFORCED PRECAST CONCRETE MANHOLE	REINFORCED PRECAST CONCRETE MANHOLE	S-46
REINFORCED PRECAST CONCRETE MANHOLE	REINFORCED PRECAST CONCRETE MANHOLE	S-47
REINFORCED PRECAST CONCRETE MANHOLE	REINFORCED PRECAST CONCRETE MANHOLE	S-48
REINFORCED PRECAST CONCRETE MANHOLE	REINFORCED PRECAST CONCRETE MANHOLE	S-49
REINFORCED PRECAST CONCRETE MANHOLE	REINFORCED PRECAST CONCRETE MANHOLE	S-50
REINFORCED PRECAST CONCRETE MANHOLE	REINFORCED PRECAST CONCRETE MANHOLE	S-51
REINFORCED PRECAST CONCRETE MANHOLE	REINFORCED PRECAST CONCRETE MANHOLE	S-52
REINFORCED PRECAST CONCRETE MANHOLE	REINFORCED PRECAST CONCRETE MANHOLE	S-53
REINFORCED PRECAST CONCRETE MANHOLE	REINFORCED PRECAST CONCRETE MANHOLE	S-54
REINFORCED PRECAST CONCRETE MANHOLE	REINFORCED PRECAST CONCRETE MANHOLE	S-55
REINFORCED PRECAST CONCRETE MANHOLE	REINFORCED PRECAST CONCRETE MANHOLE	S-56
REINFORCED PRECAST CONCRETE MANHOLE	REINFORCED PRECAST CONCRETE MANHOLE	S-57
REINFORCED PRECAST CONCRETE MANHOLE	REINFORCED PRECAST CONCRETE MANHOLE	S-58
REINFORCED PRECAST CONCRETE MANHOLE	REINFORCED PRECAST CONCRETE MANHOLE	S-59
REINFORCED PRECAST CONCRETE MANHOLE	REINFORCED PRECAST CONCRETE MANHOLE	S-60
REINFORCED PRECAST CONCRETE MANHOLE	REINFORCED PRECAST CONCRETE MANHOLE	S-61
REINFORCED PRECAST CONCRETE MANHOLE	REINFORCED PRECAST CONCRETE MANHOLE	S-62
REINFORCED PRECAST CONCRETE MANHOLE	REINFORCED PRECAST CONCRETE MANHOLE	S-63
REINFORCED PRECAST CONCRETE MANHOLE	REINFORCED PRECAST CONCRETE MANHOLE	S-64
REINFORCED PRECAST CONCRETE MANHOLE	REINFORCED PRECAST CONCRETE MANHOLE	S-65
REINFORCED PRECAST CONCRETE MANHOLE	REINFORCED PRECAST CONCRETE MANHOLE	S-66
REINFORCED PRECAST CONCRETE MANHOLE	REINFORCED PRECAST CONCRETE MANHOLE	S-67
REINFORCED PRECAST CONCRETE MANHOLE	REINFORCED PRECAST CONCRETE MANHOLE	S-68
REINFORCED PRECAST CONCRETE MANHOLE	REINFORCED PRECAST CONCRETE MANHOLE	S-69
REINFORCED PRECAST CONCRETE MANHOLE	REINFORCED PRECAST CONCRETE MANHOLE	S-70
REINFORCED PRECAST CONCRETE MANHOLE	REINFORCED PRECAST CONCRETE MANHOLE	S-71
REINFORCED PRECAST CONCRETE MANHOLE	REINFORCED PRECAST CONCRETE MANHOLE	S-72
REINFORCED PRECAST CONCRETE MANHOLE	REINFORCED PRECAST CONCRETE MANHOLE	S-73
REINFORCED PRECAST CONCRETE MANHOLE	REINFORCED PRECAST CONCRETE MANHOLE	S-74
REINFORCED PRECAST CONCRETE MANHOLE	REINFORCED PRECAST CONCRETE MANHOLE	S-75

COLLECT CHARGES AS INDICATED

NOTE:  
 GRADES TO WHICH THIS IMPROVEMENT IS TO BE CONSTRUCTED ARE SHOWN ON PLANS AND PROFILES. GRADE POINTS FOR TOP OF CURB, CENTER LINE OF STREETS, ON CENTER LINE OF ALLEYS ARE SHOWN BY CIRCLES ON PROFILES AT ALL POINTS BETWEEN DESIGNATED POINTS THE GRADE SHALL BE ESTABLISHED SO AS TO CONFORM TO A STRAIGHT LINE DRAWN BETWEEN SAID DESIGNATED POINTS. ELEVATIONS ARE IN FEET ABOVE U.S.C. & G.S. SEA LEVEL DATUM OF 1929.  
 THIS DRAWING AND THE DATA HEREON ARE HEREBY MADE A PART OF THE SPECIFICATIONS.  
 WORK SHALL BE CONSTRUCTED ACCORDING TO THE UNIFORM STANDARD SPECIFICATIONS FOR PUBLIC WORKS CONSTRUCTION AND COUNTY ENGINEER SPECIAL PROVISIONS DATED FEB. 15, 1968, AS REVISED, AND SHALL BE PROSECUTED ONLY IN THE PRESENCE OF THE CITY ENGINEER.  
 BEFORE WORK CAN BE STARTED, THE CONTRACTOR MUST OBTAIN A PERMIT TO EXCAVATE IN COUNTY STREETS FROM THE L.A. COUNTY ROAD DEPT., DISTRICT OFFICE NO. 3, AND MAKE A DEPOSIT WITH THE CITY OF ARTESIA, 1001 1/2 ST. 10011, SUFFICIENT TO COVER THE COST OF CONSTRUCTION INSPECTION AND RECORD PLANS.  
 APPROVAL OF THIS PLAN BY THE CITY OF ARTESIA DOES NOT CONSTITUTE A REPRESENTATION AS TO THE ACCURACY OF THE LOCATION OR THE EXISTENCE OR NON-EXISTENCE OF ANY UNDERGROUND UTILITY PIPE, OR STRUCTURE WITHIN THE LIMITS OF THE PROJECT. THIS NOTE APPLIES TO ALL PAGES.  
 IF WORK IS TO BE DONE IN A STATE HIGHWAY, A PERMIT MUST BE OBTAINED FROM THE STATE OF CALIFORNIA, DIVISION OF HIGHWAYS, 120 SOUTH SPRING STREET, LOS ANGELES, CALIFORNIA.

CITY OF ARTESIA, CALIFORNIA  
 JOHN A. LAMBIE, CITY ENGINEER J. D. PARKHURST, CHIEF ENGINEER  
 APPROVED BY: *[Signature]* APPROVED BY: *[Signature]*  
 LOS CERRITOS REGIONAL ENGR. OFFICE ENGINEER

CHECKED BY: *[Signature]* 12/3/68  
 REG. C.E. NO. 15931

P.C. 8160 PAGE 2

NO CHARGE FOR CONNECTIONS

40813

