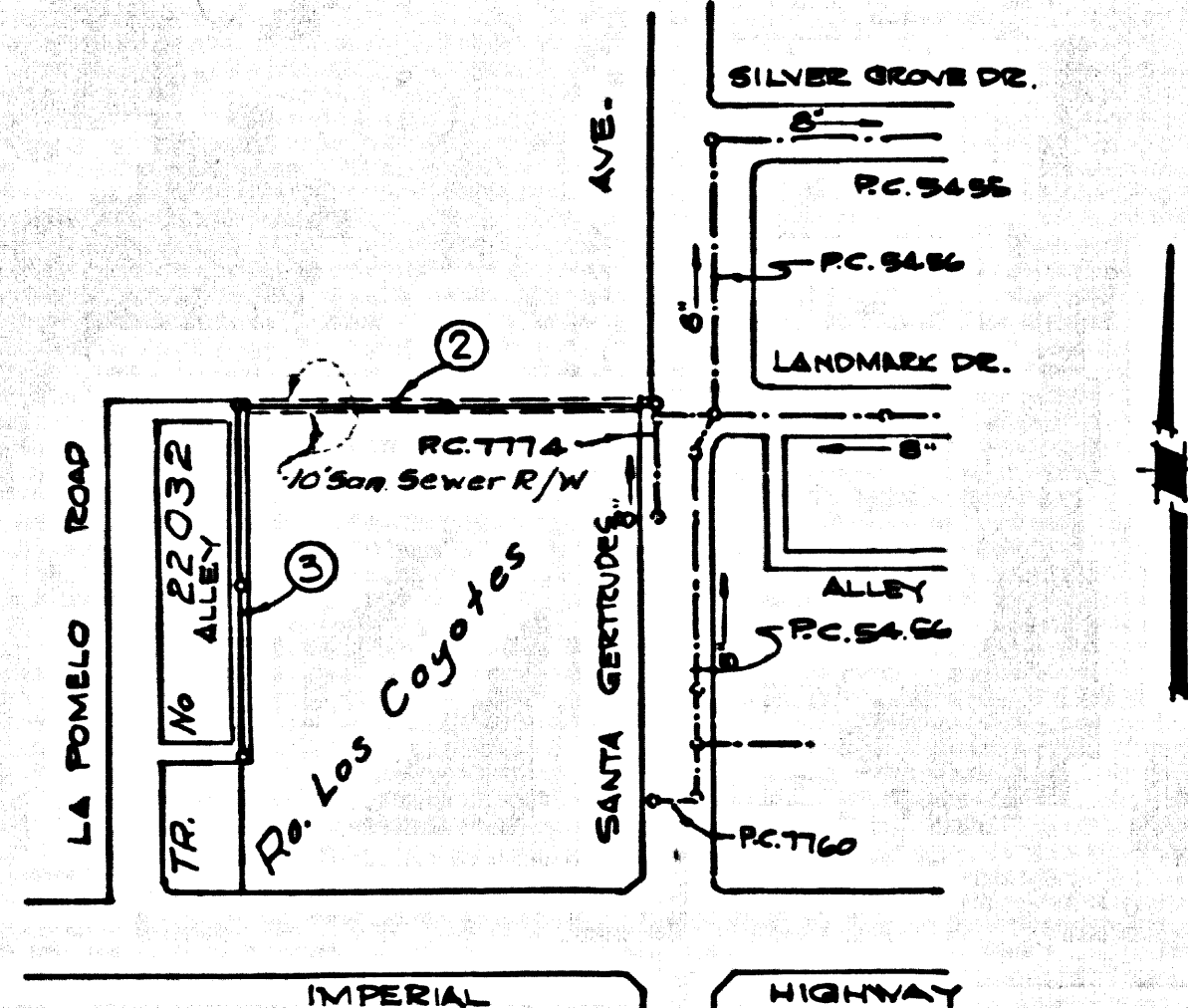


B.M. BY-1140 ELEV. 256.745
 L.A. CO. STD. MON. IN WELL 12" DN. @ OR NE. &
 INTERSECTION IMPERIAL HWY. & SANTA GERTRUDES
 AVS. MICD. TAUX LA HABRA 10 A.
 LA MIRADA QUAD. 19 G5



INDEX MAP
 TRACT NP 22032
 P.C. 8161
 SCALE 1"=300'

No connections for the disposal of industrial wastes shall be made to sewers shown on these drawings without written permission from the Chief Engineer and General Manager of the County Sanitation Districts.

THE FOLLOWING CITY ENGINEER STANDARD PLANS APPLY TO THIS PROJECT:

LEGEND	5-1
MIN. PUBLIC SAFETY REQUIREMENTS	5-2
BRICK MANHOLE	5-3
NON REINFORCED PRECAST CONCRETE MANHOLE	5-4
REINFORCED PRECAST CONCRETE MANHOLE	5-5
MANHOLE FRAME AND COVER	5-15
MANHOLE STEP	5-17
BEDDING FOR SEWER PIPE	5-21
CRADLING AND ENCASUREMENT	5-23
WYE OR TEE SUPPORT	5-24
ALLOWABLE TRENCH WIDTH	5-33
PLUG	5-30

LA MIRADA BLDG. DIST. NO. 4.08

PROFILE ALIGNMENT AND GRADE OF
 SANITARY SEWERS P.C. 8161
 PAGE 1

TRACT NP 22032

PRIVATE CONTRACT NO. 8161

W.S. 34

2 SHEETS; 3 PAGES

SCALE: VERT. 1"=4' JULY, 1968

PREPARED IN THE OFFICES OF
 THOMSEN ENGINEERING, INC.

By: *James C. Thomson*
 REG. C. E. NO. 8244

FOR LEGEND SEE PLAN NO. S-1

- PROVIDE STAKES ON THE PROPERTY LINE OR PROPERTY LINES PRODUCED AT RIGHT ANGLES TO THE SEWER LINE AT THE CENTER LINE OF EACH MANHOLE.
- NO REPRESENTATIVE OF THE CITY ENGINEER WILL SURVEY OR LAY OUT ANY PORTION OF THE WORK.
- THE PRIVATE ENGINEER SHALL FURNISH THE CITY ENGINEER WITH GRADE SHEETS AND STATIONING FOR ALL HOUSE LATERALS AND 12" OR 15" MANHOLES AND SHALL PROVIDE STAKES FOR THEM AT THESE PROPOSED LOCATIONS WITH STATIONING PLAINLY MARKED. ALL HOUSE LATERALS SHALL BE CONSTRUCTED IN A STRAIGHT ALIGNMENT AT RIGHT ANGLES FROM THE MAIN LINE SEWER EXCEPT AS SHOWN ON THE PLANS. HOUSE LATERALS FROM CHIMNEYS SHALL NOT HAVE AN ANGLE OF LESS THAN 45° WITH THE MAIN LINE SEWER. ANY CHANGE IN ALIGNMENT SHALL BE REQUESTED IN WRITING BY THE PRIVATE ENGINEER.
- THE PRIVATE ENGINEER SHALL FURNISH THE HOUSE LATERAL DEPTH AT THE PROPERTY LINE BELOW THE TOP OF CURB ELEVATION FOR EACH HOUSE LATERAL ON THE GRADE SHEET.
- NO REVISIONS SHALL BE MADE IN THESE PLANS WITHOUT THE APPROVAL OF THE CITY ENGINEER.
- THE CONTRACTOR SHALL NOTIFY THE CONSTRUCTION DIVISION BY TELEPHONE, MADISON 9-4740, EXT. 81551, AT LEAST TWENTY-FOUR HOURS BEFORE STARTING ANY WORK UNDER THIS CONTRACT.
- ALL STRUCTURES SHALL BE EITHER BRICK MANHOLES PER S-23 OR PRECAST CONCRETE MANHOLES PER S-3 OR S-4, EXCEPT AS NOTED.
- USE STANDARD MANHOLE FRAMES AND COVERS, S-15, EXCEPT AS NOTED.
- MANHOLE TOPS IN UNIMPROVED RIGHTS-OF-WAY TO BE SIX INCHES ABOVE FINISHED GRADE.
- USE EXTRA STRENGTH PIPE, ALL PIPE IS STANDARD DEPTH EXCEPT AS NOTED.
- 12" V.C.P. MANHOLES SHALL BE TYPE D, F, OR G, PER STD. SPECS. SEC. 808.2
- IF A POWER POLE IS WITHIN THREE FEET OF THE SEWER, THE SEWER SHALL BE ENCASED, PER S-23, TWO FEET ON EACH SIDE FROM THE POINT OF INTERFERENCE.
- IF DURING THE COURSE OF CONSTRUCTION IT IS DETERMINED THAT THERE IS LESS THAN FOUR FEET OF COVER OVER THE TOP OF A MAIN LINE OR HOUSE LATERAL V.C.P. SEWER WHICH IS NOT INDICATED ON THE PLANS, THE PIPE SHALL BE ENCASED PER S-23, UNLESS OTHERWISE APPROVED BY THE CITY ENGINEER.
- HOUSE LATERALS TO BE CONSTRUCTED WITH INVERTS AT PROPERTY LINE 6 FEET BELOW GRADE EXCEPT AS NOTED.
- RESURFACE ALL TRENCHES WITHIN PAVED AREAS TO MEET L.A. COUNTY ROAD DEPT. OR CALIFORNIA STATE HIGHWAY REQUIREMENTS IN ACCORDANCE WITH PERMITS.
- SEWERS TO BE TESTED FOR LEAKAGE PER SECTION 306-2.3.7 UNIFORM STANDARD SPECIFICATIONS.
- REFER TO SEC. 7-10.4.1 STD SPECS REGARDING SAFETY ORDERS.
- SPECIAL BACKFILL IN DESIGNATED AREAS:
 IN BACKFILL TRENCH AND REPLACE OTHER EARTH REMOVED SO AS TO ACHIEVE THE NATURAL OR FINISHED GRADES AND SLOPES SHOWN ON THE GRADING PLAN APPROVED FOR THIS TRACT BY THE BUILDING AND SAFETY DIVISION.
 ALL BACKFILL AND EARTH IMPROVED SHALL BE COMPACTED TO A MINIMUM OF 90% OF MAXIMUM DENSITY PER S.T.A. STAND. AND METHOD OF TEST SHALL BE AS APPROVED. ACCEPTABLE CERTIFICATION OF SUCH COMPACTION SHALL BE SUBMITTED TO THE CONSTRUCTION DIVISION.

County Sanitation Districts shall be notified before the following work that required inspection can be made (Phone 337-2023 - 466-8899)

Encasement of the project.

PRIVATE ENGINEER'S NOTICE TO CONTRACTOR

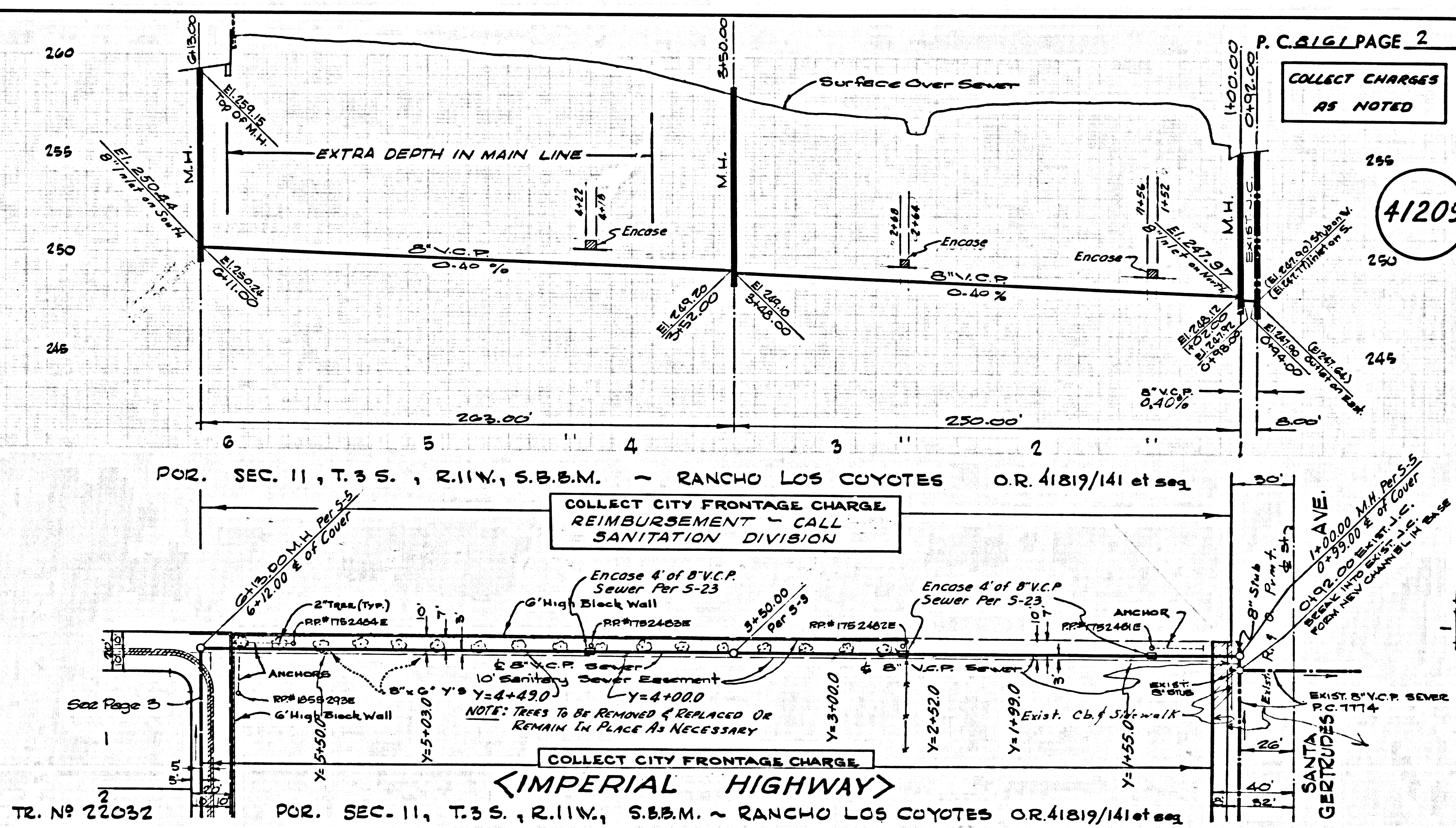
The existence and location of any underground utility pipes or structures shown on these plans are obtained by a search of the available records. To the best of our knowledge there are no existing utilities as depicted as shown on these drawings. The contractor is required to take due precautionary measure to protect the utility lines shown and any other lines not of record or not shown on these drawings.

COLLECT CHARGES AS INDICATED

Subcontractor's initials

CITY OF LA MIRADA, CALIFORNIA
 JOHN A. LAMBIE, CITY ENGINEER
 J. D. PARKHURST, CHIEF ENGINEER
 CO. SAN. DIST. NO. 10
 APPROVED BY: *John A. Lambie*
 OFFICE ENGINEER

CHECKED BY: *Orville E. McCollum* 12/1/68
 REG. C.E. NO. 15731



P.C. 8161 PAGE 2

COLLECT CHARGES AS NOTED

41209

COLLECT CITY FRONTAGE CHARGE REIMBURSEMENT - CALL SANITATION DIVISION

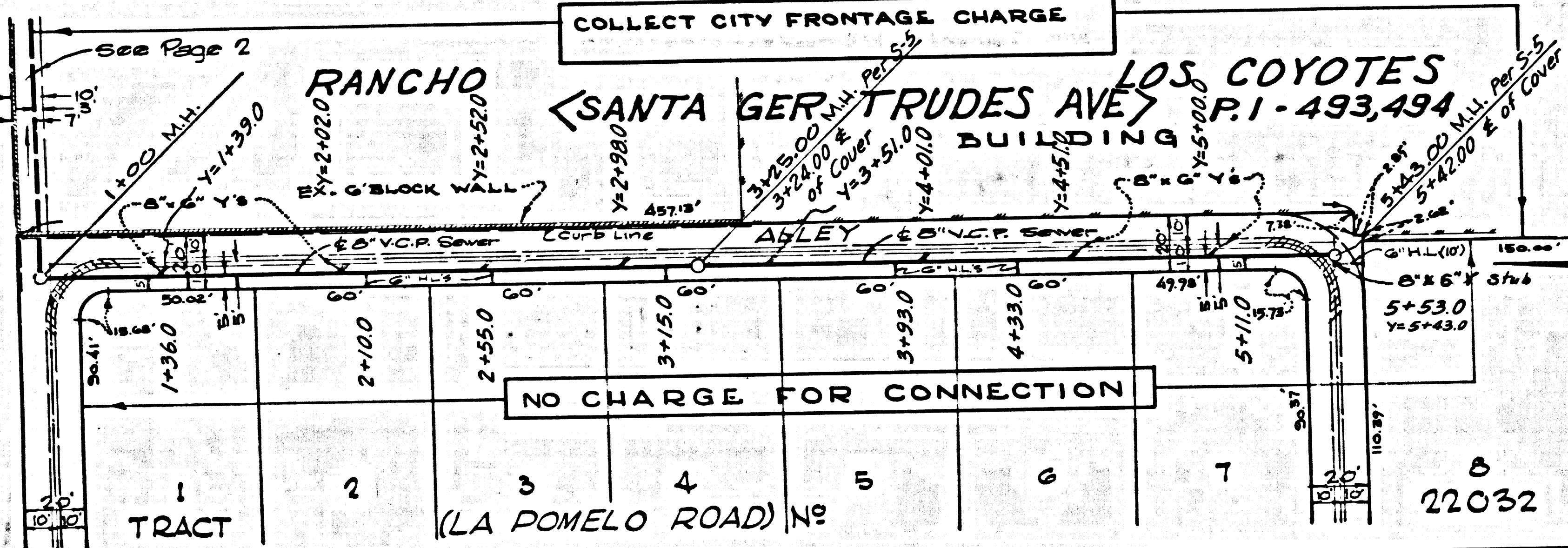
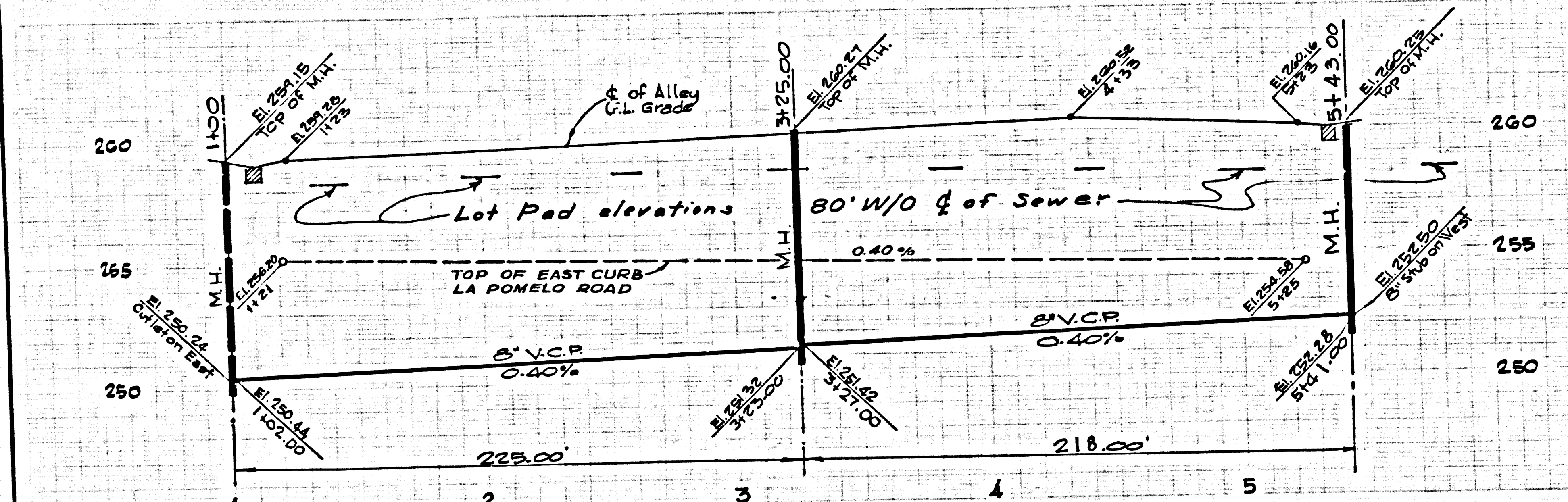
COLLECT CITY FRONTAGE CHARGE

IMPERIAL HIGHWAY

BIG PAGE 3

COLLECT CHARGE AS NOTED

41210



2' - 0" dia
6' - 45
2 M.H.'s

PAGE

34500

K & S, 120 L.A. COUNTY SEWER SHEET NO. 2 00, CAL. BLUEPRINT CO.