

B.M. BY 7107 ELEV. 43.659  
 L & T. E. Curb at S.C.R. of SE. corner Fremont Blvd. & Candlenwood St. 66 Ft. 1 S. & 40 Ft. 1 E. of E. Int.

BASELINE QUAD. 1965  
 (BELLFLOWER QUAD)

REVISION N.S.1. Dec 20, 1968 Deleted 10" V.C.P. Main Line Sewer from 500' to 600' on Del Bay St. & 5' Street  
 Office of the City Engineer 15931  
 REVISION N.S.2 February 7, 1969 Deleted 8" V.C.P. Main Line Sewer from 500' to 600' on Del Bay St. & 5' Street  
 Office of the City Engineer 15931

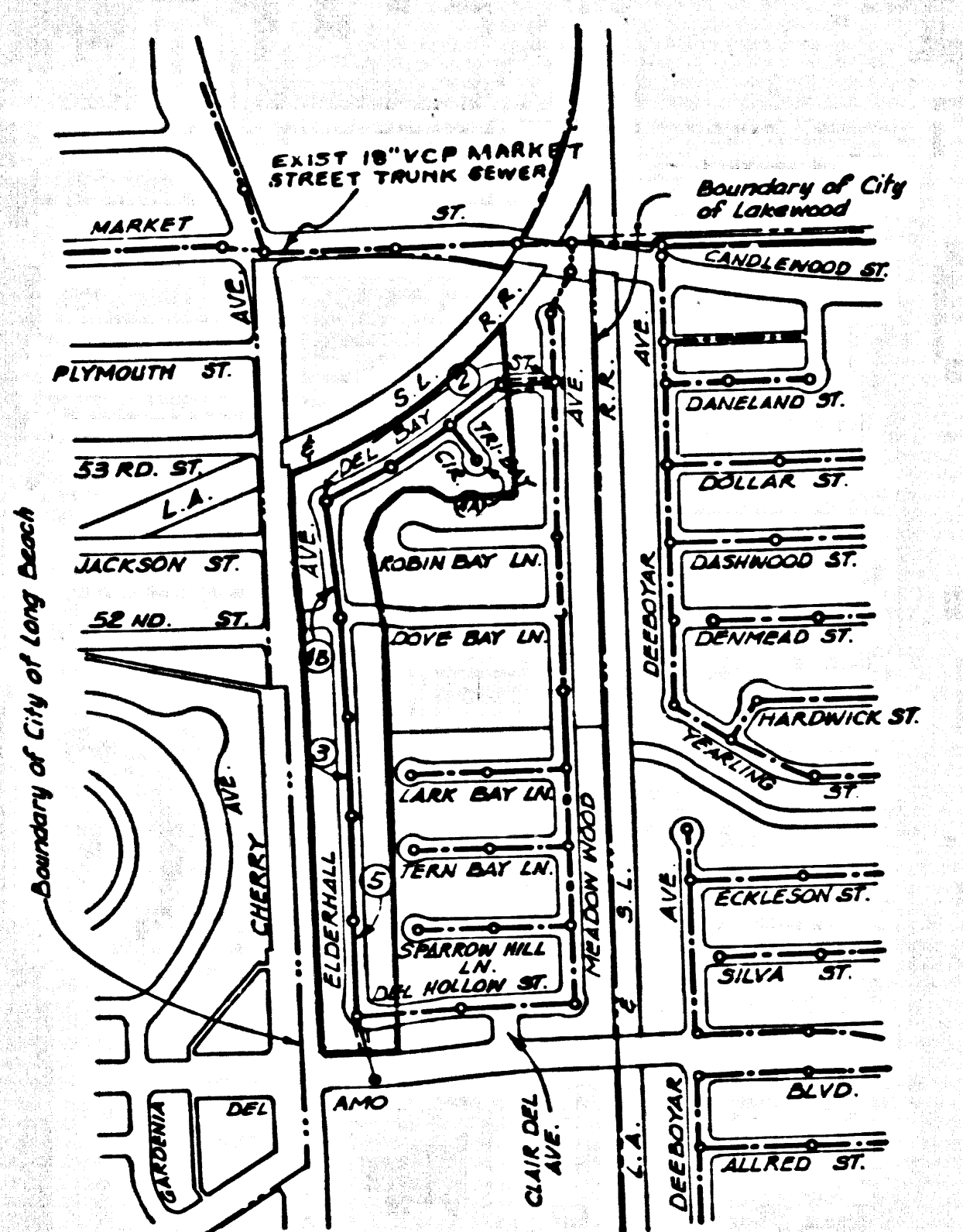
LAKEWOOD BLDG. DIST. NO. 4.01

PROFILE ALIGNMENT AND GRADE OF  
**SANITARY SEWERS** P.C. 8163  
 TO BE CONSTRUCTED IN PAGE 1  
**TRACT NO. 28177**  
 AND IN SANITARY SEWER R/W.

**PRIVATE CONTRACT NO. 8163**  
 W.S. 30  
 3 SHEETS; 5 PAGES 4116  
 SCALE: VERT. 1"=4' AUGUST, 1968  
 HORIZONTAL 1"=40'  
 PREPARED IN THE OFFICES OF  
**HARDWICK ENGINEERING CO.**  
 By: *Thomas P. Hardwick*  
 REG. C. E. NO. 13228  
 FOR LEGEND SEE PLAN NO. S-1

THE FOLLOWING CITY ENGINEER STANDARD PLANS APPLY TO THIS PROJECT

- S-1 LEGEND
- S-2 MINIMUM EXCAVATION SAFETY REQUIREMENTS.
- S-3 BRICK MANHOLE
- S-13 NEW CONNECTION TO EXISTING BRICK MANHOLE
- S-15 MANHOLE FRAME AND COVER
- S-17 STANDARD MANHOLE STEP
- S-21 BEDDING FOR SEWER PIPE
- S-22 SPECIAL SUPPORT PROTECTION
- S-23 CRADLING AND ENCASUREMENT
- S-26 WYE SUPPORT
- S-30 STOPPER
- S-33 ALLOWABLE TRENCH WIDTHS



INDEX MAP  
 SCALE 1"=200'  
 P.C. 8163  
 TRACT NO. 28177

Lots N.S. 1, 2, 3 to be served from PC8052

Allow No Connections until PC8053 has been accepted for Public use by the Construction Division of the County Engineer.

- NOTES:
1. PROFILE STAKES ON THE PROPERTY LINE OR PROPERTY LINES PRODUCED AT RIGHT ANGLES TO THE SEWER LINE AT THE CENTER LINE OF EACH MANHOLE.
  2. NO REPRESENTATIVE OF THE CITY ENGINEER WILL SURVEY OR LAY OUT ANY PORTION OF THE WORK.
  3. THE PRIVATE ENGINEER SHALL FURNISH THE CITY ENGINEER WITH GRADE SHEETS AND STATIONING FOR ALL HOUSE LATERALS AND ALL HOUSE LATERALS SHALL BE CONSTRUCTED IN A STRAIGHT ALIGNMENT AT RIGHT ANGLES TO THE MAIN LINE SEWER EXCEPT AS SHOWN ON THE PLANS. HOUSE LATERALS FROM CHIMNEYS SHALL NOT HAVE AN ANGLE OF LESS THAN 45° WITH THE MAIN LINE SEWER. ANY CHANGE IN ALIGNMENT SHALL BE REQUESTED IN WRITING BY THE PRIVATE ENGINEER.
  4. THE PRIVATE ENGINEER SHALL FURNISH THE HOUSE LATERAL DEPTH AT THE PROPERTY LINE BELOW THE TOP OF CURB ELEVATION FOR EACH HOUSE LATERAL ON THE GRADE SHEET.
  5. NO REVISIONS SHALL BE MADE IN THESE PLANS WITHOUT THE APPROVAL OF THE CITY ENGINEER.
  6. THE CONTRACTOR SHALL NOTIFY THE CONSTRUCTION DIVISION BY TELEPHONE, MADISON 9-242, EXT. 8159, AT LEAST TWENTY-FOUR HOURS BEFORE STARTING ANY WORK UNDER THIS CONTRACT.
  7. ALL STRUCTURES SHALL BE BRICK MANHOLES PER S-3.
  8. USE STANDARD MANHOLE FRAMES AND COVERS, S-15, EXCEPT AS NOTED.
  9. MANHOLE TOPS TO BE AT FINISHED GRADE.
  10. USE EXTRA STRENGTH PIPE. ALL PIPE IS STANDARD DEPTH EXCEPT AS NOTED.
  11. WITHFIELD CLAY PIPE JOINTS SHALL BE TYPE "D", "E" OR "G" PER STANDARD SPECIFICATIONS SECTION 208.2.
  12. IF A POWER POLE IS WITHIN THREE FEET OF THE SEWER, THE SEWER SHALL BE ENCASED, PER S-23, TWO FEET ON EACH SIDE FROM THE POINT OF INTERFERENCE.
  13. IF DURING THE COURSE OF CONSTRUCTION IT IS DETERMINED THAT THERE IS LESS THAN FOUR FEET OF COVER OVER THE TOP OF A MAIN LINE OR HOUSE LATERAL V.C.P. SEWER WHICH IS NOT INDICATED ON THE PLANS, THE PIPE SHALL BE ENCASED PER S-23, UNLESS OTHERWISE APPROVED BY THE CITY ENGINEER.
  14. HOUSE LATERALS TO BE CONSTRUCTED WITH INVERTS AT PROPERTY LINE 4 FEET BELOW CURB GRADE EXCEPT AS NOTED.
  15. RESURFACE ALL TRENCHES WITHIN PAVED AREAS TO MEET L.A. COUNTY ROAD DEPT. OR CALIFORNIA STATE HIGHWAY REQUIREMENTS IN ACCORDANCE WITH PERMITS.
  16. SEWERS TO BE TESTED FOR LEAKAGE PER SECTION 306-23.7 UNIFORM STANDARD SPECIFICATIONS.
  17. REFER TO SECTION 71.10 41 OF THE STANDARD SPECIFICATIONS, REGARDING SAFETY ORDERS.
  18. SPECIAL SAFETY IN DESIGNATED AREAS: CITY ENGINEER WITH GRADE SHEETS AND STATIONING FOR ALL HOUSE LATERALS AND ALL HOUSE LATERALS SHALL BE CONSTRUCTED IN A STRAIGHT ALIGNMENT AT RIGHT ANGLES TO THE MAIN LINE SEWER EXCEPT AS SHOWN ON THE PLANS. HOUSE LATERALS FROM CHIMNEYS SHALL NOT HAVE AN ANGLE OF LESS THAN 45° WITH THE MAIN LINE SEWER. ANY CHANGE IN ALIGNMENT SHALL BE REQUESTED IN WRITING BY THE PRIVATE ENGINEER.
  19. ALL JOINTS BETWEEN CAST IRON PIPE AND WITHFIELD CLAY PIPE SHALL BE MADE WITH A RUBBER GASKET JOINT TYPE "C" OR "D" (WITH BUSHINGS IF NECESSARY) PER STANDARD SPECIFICATIONS SECTION 208.2.
  20. YORKT BRANCHES MAY BE USED FOR CONNECTIONS TO MAINLINE SEWERS EXCEPT AS NOTED.

County Sanitation Districts shall be notified prior to the following so that required inspection can be made (Phone 497-3889 - 636-5097)

**COLLECT CHARGES AS INDICATED**

NO CONNECTIONS FOR THE DISPOSAL OF INDUSTRIAL WASTES SHALL BE MADE TO SEWERS SHOWN ON THESE DRAWINGS WITHOUT WRITTEN PERMISSION FROM THE CITY ENGINEER AND GENERAL MANAGER OF THE COUNTY SANITATION DISTRICTS.

NOTE: GRADES TO WHICH THIS IMPROVEMENT IS TO BE CONSTRUCTED ARE SHOWN ON PLANS AND PROFILE. GRADE POINTS FOR TOP OF CURBS, CENTER LINE OF STREETS, OR CENTER LINE OF ALLEYS ARE SHOWN BY CIRCLES ON PROFILES AT ALL POINTS BETWEEN DESIGNATED POINTS. THE GRADE SHALL BE ESTABLISHED TO CONFORM TO A STRAIGHT LINE DRAWING BETWEEN SAID DESIGNATED POINTS. ELEVATIONS ARE IN FEET ABOVE U.S.C. & G.S. SEA LEVEL DATUM OF 1929.

WORK SHALL BE CONSTRUCTED ACCORDING TO THE UNIFORM STANDARD SPECIFICATIONS FOR PUBLIC WORKS CONSTRUCTION AND CITY ENGINEER SPECIAL PROVISIONS DATED FEBRUARY 12, 1968, AS REVISED, AND SHALL BE PROSECUTED ONLY IN THE PRESENCE OF THE CITY ENGINEER.

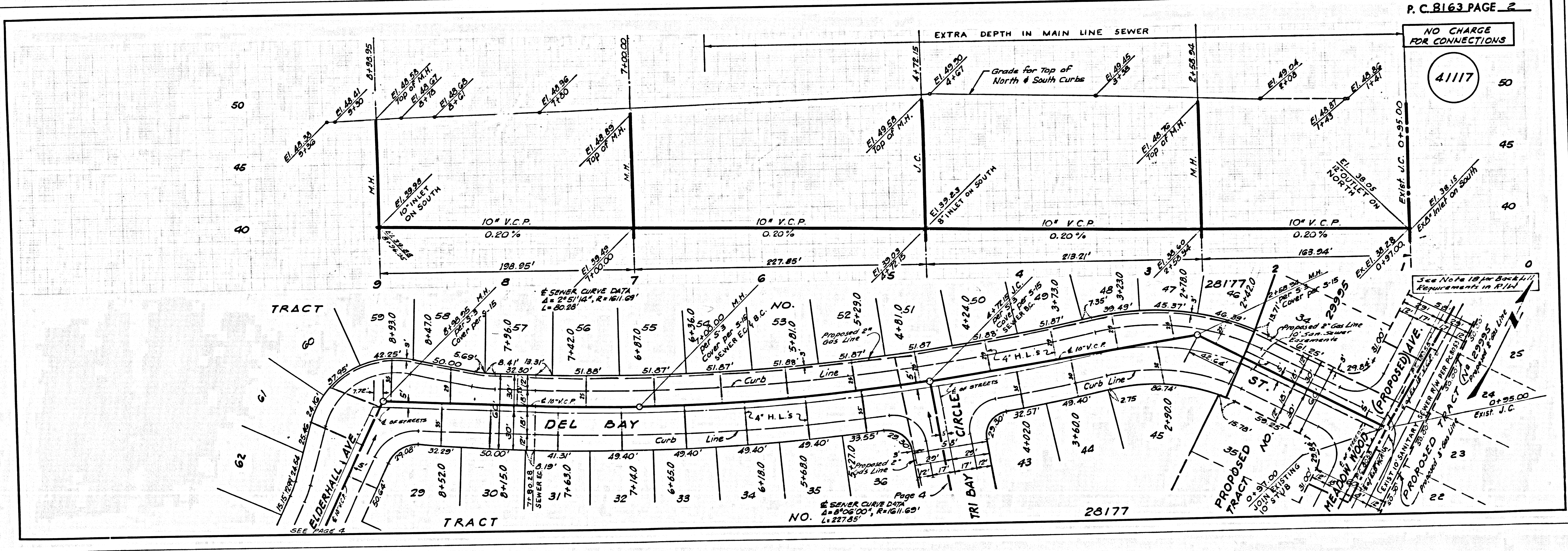
BEFORE WORK CAN BE STARTED, THE CONTRACTOR MUST OBTAIN A PERMIT TO EXCAVATE IN CITY STREETS FROM THE L.A. COUNTY ROAD DEPT., DISTRICT OFFICE NO. \_\_\_\_\_ AND MAKE A DEPOSIT WITH THE CITY OF L.A. ROAD DEPT. 2000 CLARK AVENUE, LOS ANGELES, CALIFORNIA 90007, IN THE AMOUNT OF \$1000.00 TO COVER THE COST OF CONSTRUCTION INSPECTION AND RECORD PLANS.

APPROVAL OF THIS PLAN BY THE CITY OF LAKEWOOD DOES NOT CONSTITUTE A REPRESENTATION AS TO THE ACCURACY OF THE EXISTENCE OF OR THE NON-EXISTENCE OF ANY UNDERGROUND UTILITY PIPE, OR STRUCTURE WITHIN THE LIMITS OF THIS PROJECT. THIS NOTE APPLIES TO ALL PAGES.

IF WORK IS TO BE DONE IN A STATE HIGHWAY, A PERMIT MUST BE OBTAINED FROM THE STATE OF CALIFORNIA, DIVISION OF HIGHWAYS, 120 SOUTH SPRING STREET, LOS ANGELES, CALIFORNIA.

**CITY OF LAKEWOOD, CALIFORNIA**  
 JOHN A. LAMBIE, CITY ENGINEER J. D. PARKHURST, CHIEF ENGINEER  
 CO. SANITARY DISTRICT 11  
 APPROVED BY: *Orville E. McAllen* APPROVED BY: *J. D. Parkhurst*  
 FOR REGIONAL ENGINEER FOR OFFICE ENGINEER

CHECKED BY: *Robert C. Jones* 4/6/68  
 REG. C.E. NO. 11082

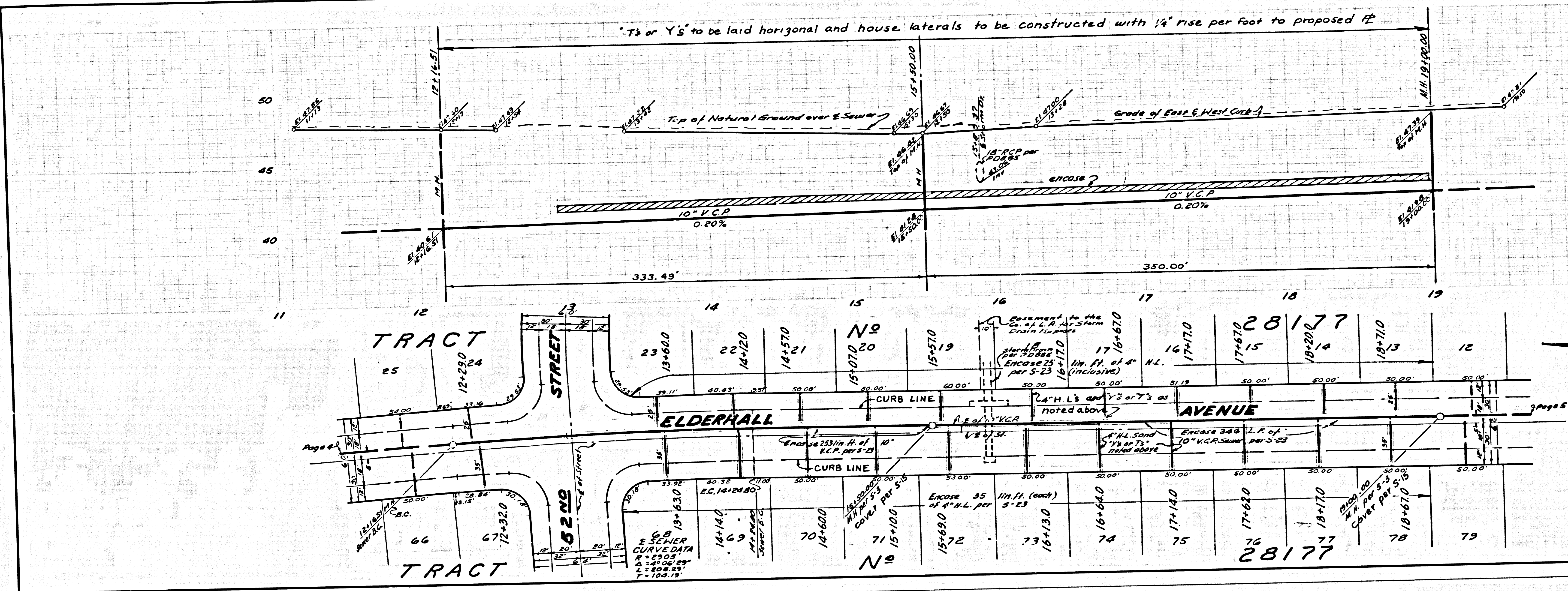


P. C. 8163 PAGE 2  
 NO CHARGE FOR CONNECTIONS  
 4117



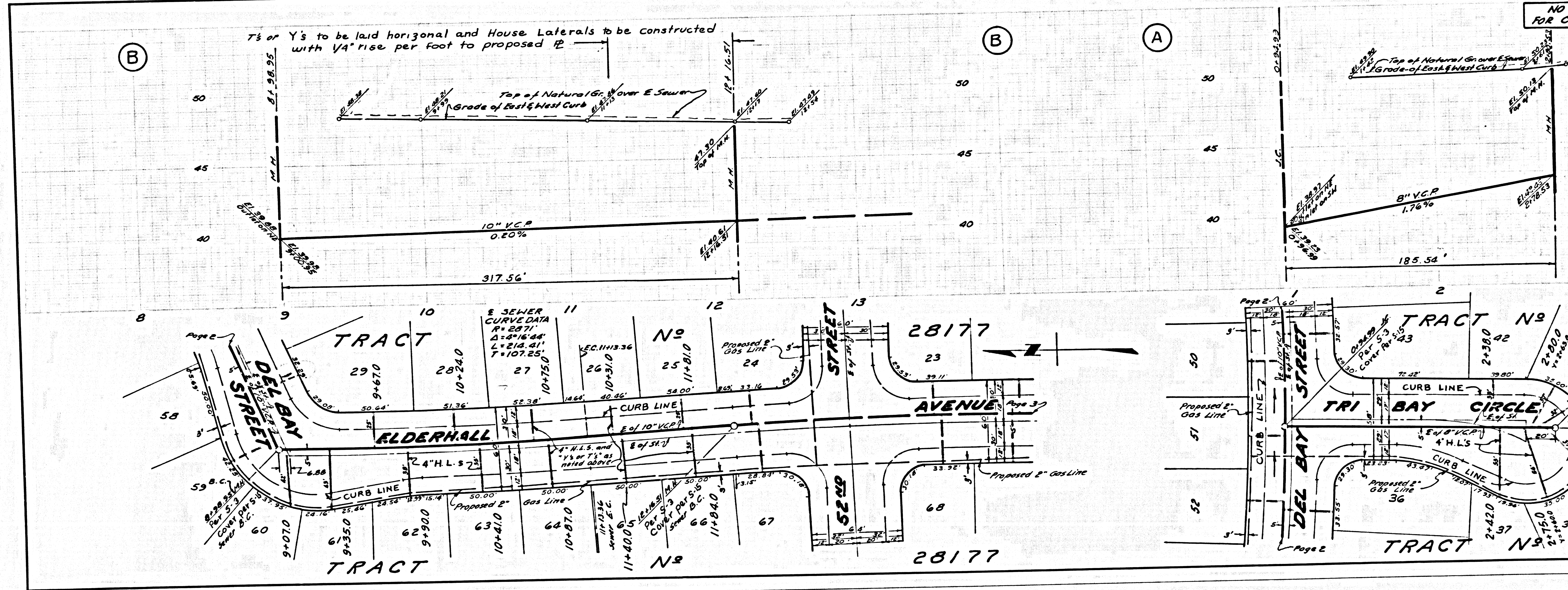
NO CHARGE FOR CONNECTIONS

41118



NO CHARGE FOR CONNECTIONS

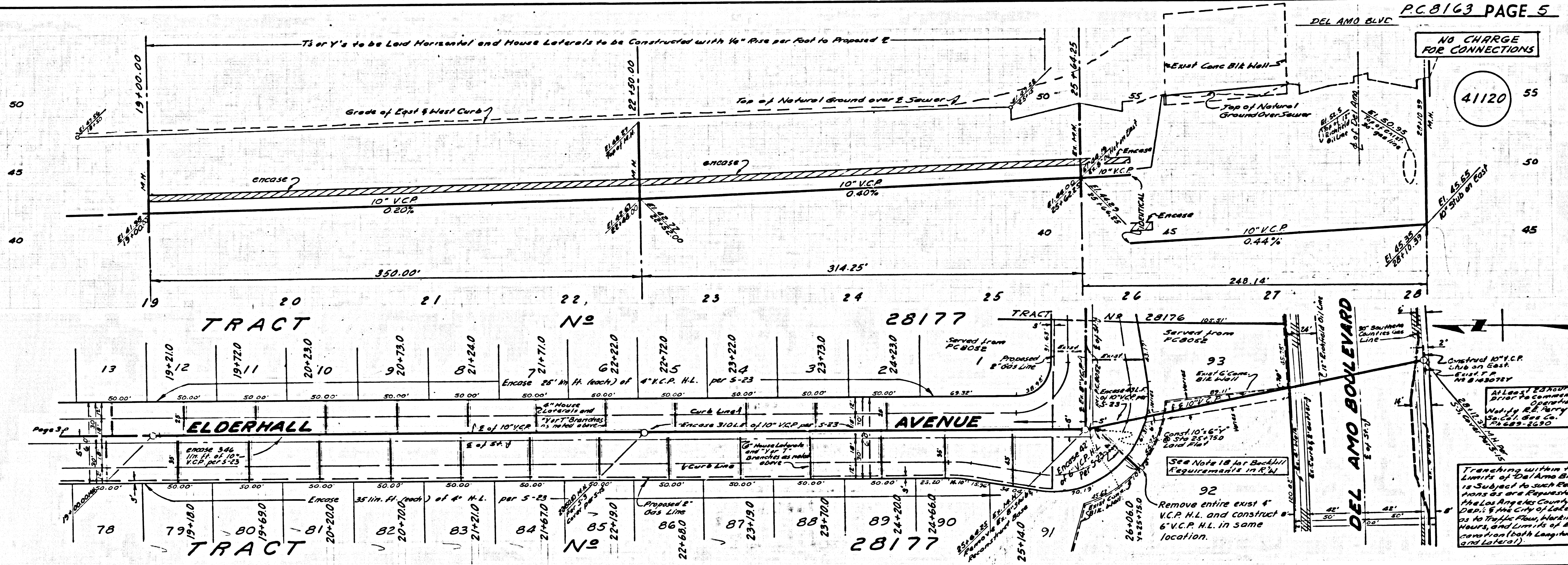
41119





NO CHARGE FOR CONNECTIONS

41120



L.A. COUNTY SEWER SHEET NO. 2 SOUTHERN CALIFORNIA BLUEPRINT CO.