

B.M. S.L. 1777 ELEV. 1081.061  
 F.D. USC # 65 MON. SW. END OF NW. ABUTMENT  
 31' SW. TRACK # 25 MI. W. ALONG SANTA PAULA  
 BRANCH SPRR. FROM SAUGUS STA. MKD.  
 T 370 1953  
 NEWHALL QUAD. 1928.

County Sanitation Districts shall be notified prior to the following so that required inspection can be made (Phone 337-1025 or 606-8097)

THE CONTRACTOR MUST VERIFY THE INVERT ELEVATIONS AT 25' TO (J.C.) AND AT THE END OF 8" VCP

Commencement of construction of manhole on District trunk sewer.

(6) Acceptance of the project.

NEWHALL BLDG. DIST. NO. 8.2

ALIGNMENT AND GRADE OF  
 SANITARY SEWERS P.C. 8164  
 CONSTRUCTED IN PAGE 1

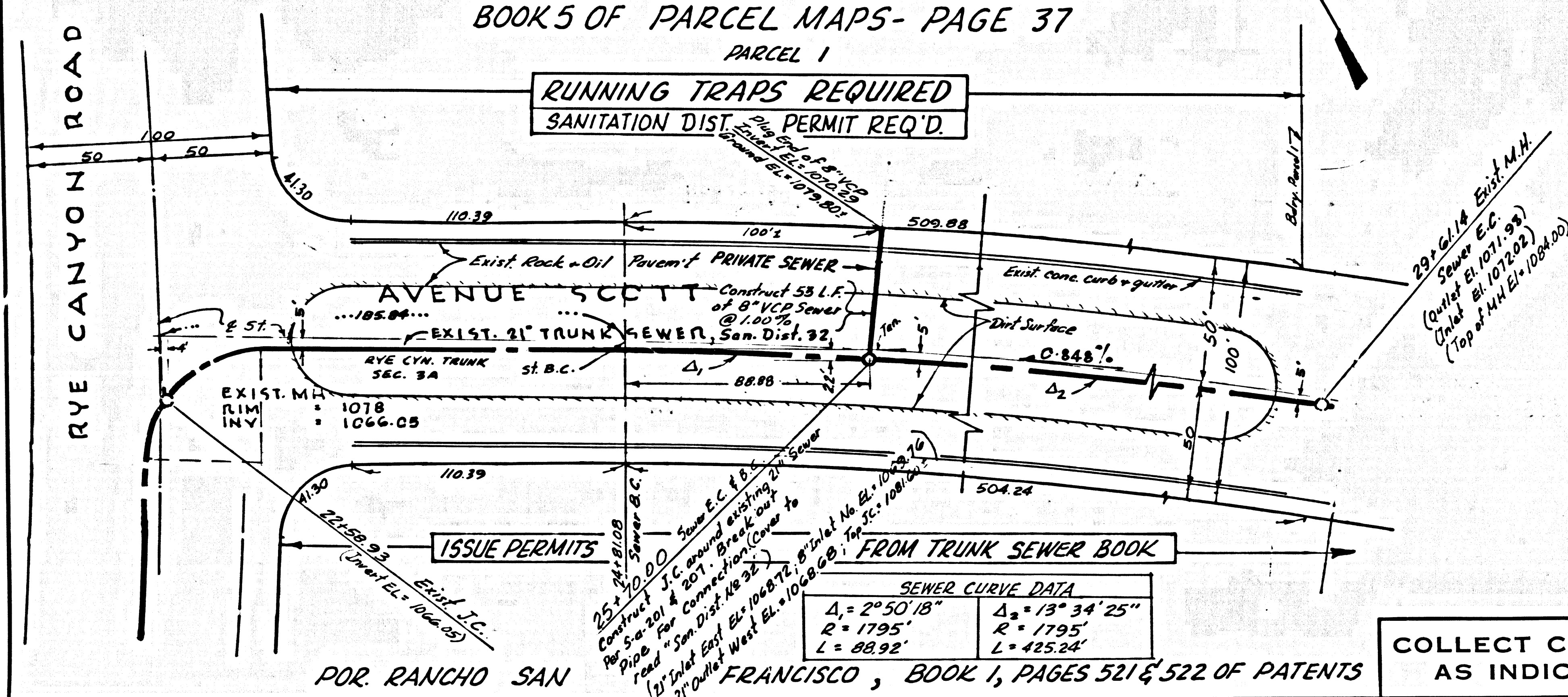
AVENUE SCOTT  
 (TO SERVE PARCEL 1 OF  
 PARCEL MAP, BOOK 5, PAGE 37)  
 PRIVATE CONTRACT NO. 8164  
 W.S. 63  
 1 SHEET ; 1 PAGE  
 SCALE: HORIZ. 1" = 40' VERT. 1" = 4' SEPT. 1968  
 PREPARED IN THE OFFICES OF  
 DONALD R. WARREN CO.  
 REG. C. E. NO. 25524

- NOTES:
- HOUSE LATERALS TO BE CONSTRUCTED WITH INVERTS AT PROPERTY LINE 6 FEET BELOW CURB GRADE EXCEPT AS NOTED.
  - PROVIDE STAKES ON THE PROPERTY LINE OR PROPERTY LINES PRODUCED AT RIGHT ANGLES TO THE SEWER LINE AT THE CENTER LINE OF EACH MANHOLE.
  - NO REPRESENTATIVE OF THE COUNTY ENGINEER WILL SURVEY OR LAY OUT ANY PORTION OF THE WORK.
  - THE PRIVATE ENGINEER SHALL FURNISH THE COUNTY ENGINEER WITH GRADE SHEETS AND STATIONING FOR ALL HOUSE LATERALS AND SHALL PROVIDE STAKES FOR THEM AT THEIR PROPER LOCATIONS WITH STATIONING PLAINLY MARKED. ALL HOUSE LATERALS SHALL BE CONSTRUCTED IN A STRAIGHT ALIGNMENT AT RIGHT ANGLES FROM THE MAIN LINE SEWER EXCEPT AS SHOWN ON THE PLANS. HOUSE LATERALS FROM CHIMNEYS SHALL HAVE AN ANGLE OF LESS THAN 45° WITH THE MAIN LINE SEWER. ANY CHANGE IN ALIGNMENT SHALL BE REQUESTED IN WRITING BY THE PRIVATE ENGINEER.
  - THE PRIVATE ENGINEER SHALL FURNISH THE HOUSE LATERAL DEPTH AT THE PROPERTY LINE BELOW THE TOP OF CURB ELEVATION FOR EACH HOUSE LATERAL ON THE GRADE SHEET.
  - NO REVISIONS SHALL BE MADE IN THESE PLANS WITHOUT THE APPROVAL OF THE COUNTY ENGINEER.
  - THE CONTRACTOR SHALL NOTIFY THE CONSTRUCTION DIVISION BY TELEPHONE, MADISON 9-4747, EXT. 8158, AT LEAST TWENTY-FOUR HOURS BEFORE STARTING ANY WORK UNDER THIS CONTRACT.
  - ALL STRUCTURES SHALL BE BUILT IN ACCORDANCE WITH THE STANDARD SPECIFICATIONS FOR PUBLIC WORKS CONSTRUCTION AND SPECIAL PROVISIONS FOR THE CONSTRUCTION OF SANITARY SEWERS DATED PER. 15, 1968, AS REVISED, AND SHALL BE PROSECUTED ONLY IN THE PRESENCE OF THE COUNTY ENGINEER.
  - MANHOLE TOPS IN UNIMPROVED RIGHTS OF WAY TO BE 4" BELOW FINISHED GRADE.
  - USE EXTRA STRENGTH PIPE. ALL PIPE IS STANDARD DEPTH EXCEPT AS NOTED.
  - VITRIFIED CLAY PIPE JOINTS SHALL BE TYPE "B", "C", OR "D" PER STANDARD SPECIFICATIONS SECTION 206.2.
  - IF A POWER POLE IS WITHIN THREE FEET OF THE SEWER, THE SEWER SHALL BE ENCASED, PER 2-23, TWO FEET ON EACH SIDE FROM THE POINT OF INTERFERENCE.
  - IF DURING THE COURSE OF CONSTRUCTION IT IS DETERMINED THAT THERE IS LESS THAN FOUR FEET OF COVER OVER THE TOP OF A MAIN LINE OR HOUSE LATERAL V.C.P. SEWER WHICH IS NOT INDICATED ON THE PLANS, THE PIPE SHALL BE ENCASED PER 2-23, UNLESS OTHERWISE APPROVED BY THE COUNTY ENGINEER.
  - RESURFACE ALL TRENCHES WITHIN PAVED AREAS TO MEET L.A. COUNTY ROAD DEPT. OR CALIFORNIA STATE HIGHWAY REQUIREMENTS IN ACCORDANCE WITH PERMITS.
  - SEWERS TO BE TESTED FOR LEAKAGE PER SECTION 206-2.3.7 OF THE STANDARD SPECIFICATIONS.
  - REFER TO SECTION 110-4.1 OF THE STANDARD SPECIFICATIONS, REGARDING SAFETY ORDERS.
  - ALL JOINTS BETWEEN CAST IRON PIPE AND VITRIFIED CLAY PIPE SHALL BE MADE WITH A RUBBER SLEEVE JOINT, TYPE "C" OR "D", WITH BUSHING IF NECESSARY PER STANDARD SPECIFICATIONS, SECTION 206-2.
- THE FOLLOWING LATEST REVISED STANDARD PLANS ON FILE IN THE OFFICE OF THE COUNTY ENGINEER SHALL APPLY IN THE CONSTRUCTION OF THIS PROJECT:

LEGEND	2-1
MINIMUM PUBLIC SAFETY REQUIREMENTS	2-2
BRICK MANHOLES	2-3
NON-REINFORCED PRECAST CONCRETE MANHOLES	2-4
REINFORCED PRECAST CONCRETE MANHOLES	2-5
MANHOLE FRAME AND COVER	2-6
BRICKMAN MANHOLE BRP	2-7
BEDDING FOR SEWER PIPE	2-8
CRADLING AND ENCASEMENT	2-9
PIPE ON THE SURFACE	2-10
ALLOWABLE TRENCH WIDTHS	2-11
J.C. PER S.E. 201 & 207	

NOTE:  
 GRADES TO WHICH THIS IMPROVEMENT IS TO BE CONSTRUCTED ARE SHOWN ON PLANS AND PROFILES. GRADE POINTS FOR TOP OF CURBS, CENTER LINE OF STREETS, OR CENTER LINE OF ALLEYS ARE SHOWN BY CIRCLES ON PROFILES. AT ALL POINTS BETWEEN DESIGNATED POINTS THE GRADE SHALL BE ESTABLISHED SO AS TO CONFORM TO A STRAIGHT LINE DRAWN BETWEEN SAID DESIGNATED POINTS. ELEVATIONS ARE IN FEET ABOVE U.S.C. & G.S. SEA LEVEL DATUM OF 1929.  
 WORK SHALL BE CONSTRUCTED ACCORDING TO THE STANDARD SPECIFICATIONS FOR PUBLIC WORKS CONSTRUCTION AND SPECIAL PROVISIONS FOR THE CONSTRUCTION OF SANITARY SEWERS DATED PER. 15, 1968, AS REVISED, AND SHALL BE PROSECUTED ONLY IN THE PRESENCE OF THE COUNTY ENGINEER.  
 BEFORE WORK CAN BE STARTED, THE CONTRACTOR MUST OBTAIN A PERMIT TO EXCAVATE IN COUNTY STREETS FROM THE L. A. COUNTY ROAD DEPT., DISTRICT OFFICE NO. 2, AND PAY A FEE TO THE COUNTY ENG. BLDG. ROOM 320, COUNTY ENGINEERING BUILDING, 126 WEST SECOND STREET OR, NEWHALL, CALIFORNIA.  
 APPROVAL OF THIS PLAN BY THE COUNTY OF LOS ANGELES DOES NOT CONSTITUTE A REPRESENTATION AS TO THE ACCURACY OF THE LOCATION OF OR THE EXISTENCE OR NON-EXISTENCE OF ANY UNDERGROUND UTILITY PIPE, OR STRUCTURE WITHIN THE LIMITS OF THIS PROJECT. THIS NOTE APPLIES TO ALL PAGES.  
 IF WORK IS TO BE DONE IN A STATE HIGHWAY, A PERMIT MUST BE OBTAINED FROM THE STATE OF CALIFORNIA, DIVISION OF HIGHWAYS, 130 SOUTH SPRING STREET, LOS ANGELES, CALIFORNIA.

COUNTY OF LOS ANGELES, CALIFORNIA  
 JOHN A. LAMBIE, COUNTY ENGINEER J. D. PARKHURST, CHIEF ENGINEER  
 CO. SAN. DIST. NO. 32  
 APPROVED BY: *John A. Lambie* DATE: 9/10/68 APPROVED BY: *J. D. Parkhurst* DATE: 9/10/68  
 CHECKED BY: *Ralph Schaefer* DATE: 9/10/68  
 REG. C.E. NO. 13906



COLLECT CHARGES AS INDICATED

FOR RANCHO SAN FRANCISCO, BOOK 1, PAGES 521 & 522 OF PATENTS