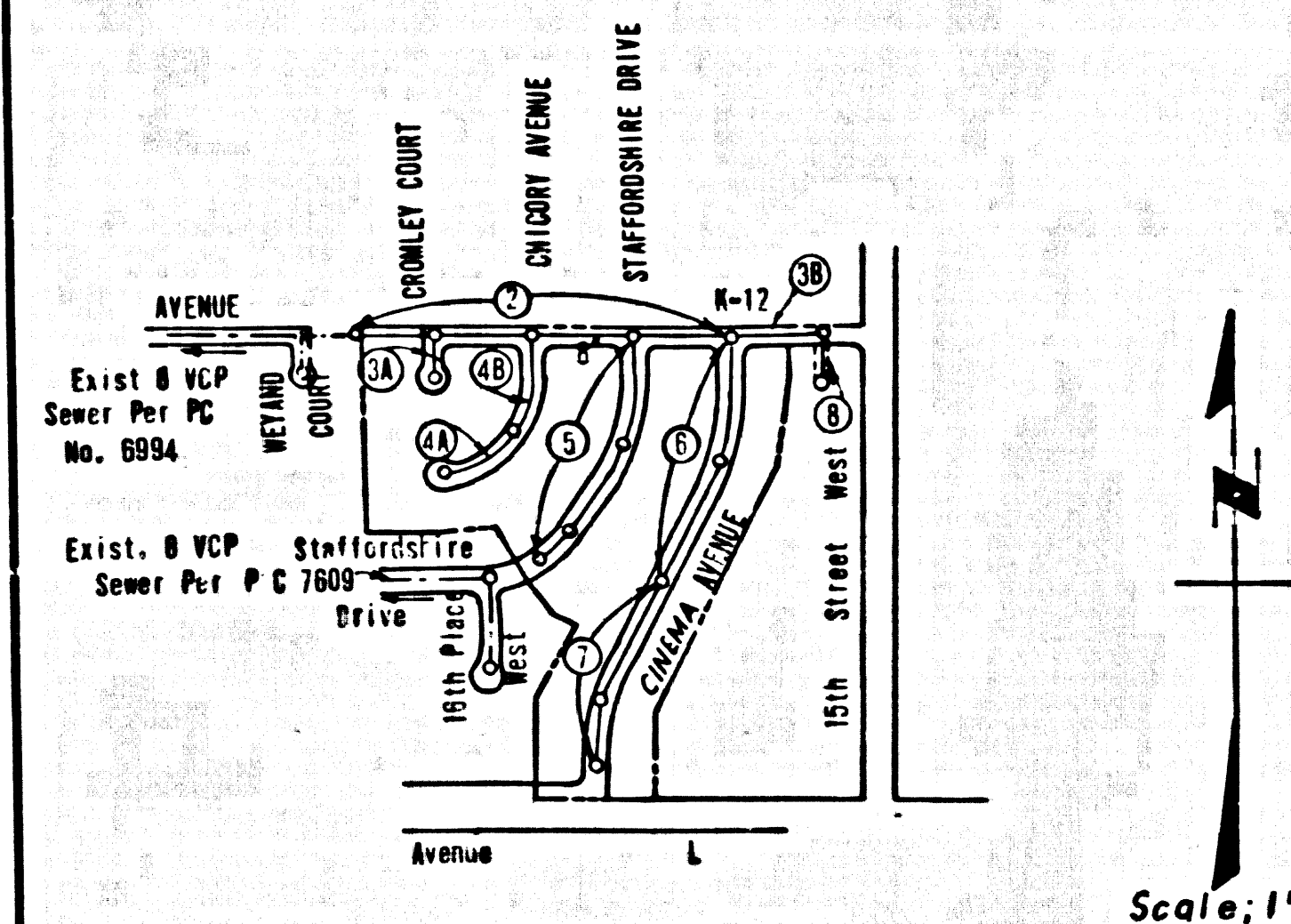


2818 29

B.M. SL 324 ELEV. 2418.395
LRT in conc slab on SE cor to house
No 43141 20th St. W 102 ft W &
and 260 ft S of Avenue K-8
LANCASTER QUAD. 1962

PRIVATE ENGINEERS NOTICE TO CONTRACTORS
The existence and location of any underground utility or structure shown on these plans are obtained by a search of the available records. To the best of our knowledge there are no existing utilities except as shown on this map.
The contractor is required to take due precautionary measures to protect the utility lines shown and any other lines not of record or not shown on this map.
E.L. Bolden Jr.
E.L. Bolden Jr., R.C.E. 10533

REVISED:
1. Revise Street Grades on pages 2, 3, 5, 6, 17.
2. Correct Sewer Sta. on page 3-B
Approved: *Richard L. Koppeck* 12-13-69
Date: 5-10-69



NOTE: Numbers in circles indicate page numbers.
INDEX MAP
TRACT NO. 30299
P.C. 8165

LANCASTER BLDG. DIST. NO. 8.0

- PROVIDE STAKES ON THE PROPERTY LINE OR PROPERTY LINES PRODUCED AT RIGHT ANGLES TO THE SEWER LINE AT THE CENTER LINE OF EACH MANHOLE.
- NO REPRESENTATIVE OF THE COUNTY ENGINEER WILL SURVEY OR LAY OUT ANY PORTION OF THE WORK.
- THE PRIVATE ENGINEER SHALL FURNISH THE COUNTY ENGINEER WITH GRADE SHEETS AND STATIONING FOR ALL HOUSE LATERALS AND "Y" BRANCHES AND SHALL PROVIDE STAKES FOR THEM AT THEIR PROPER LOCATIONS WITH STATIONING PLAINLY MARKED. ALL HOUSE LATERALS SHALL BE CONSTRUCTED IN A STRAIGHT ALIGNMENT AT RIGHT ANGLES FROM THE MAIN LINE SEWER EXCEPT AS SHOWN ON THE PLANS. ANY CHANGE IN LOCATION SHALL BE REQUESTED IN WRITING BY THE PRIVATE ENGINEER.
- THE PRIVATE ENGINEER SHALL FURNISH THE HOUSE LATERAL DEPTH AT THE PROPERTY LINE BELOW THE TOP OF CURB ELEVATION FOR EACH HOUSE LATERAL ON THE GRADE SHEET.
- NO REVISIONS SHALL BE MADE IN THESE PLANS WITHOUT THE APPROVAL OF THE COUNTY ENGINEER.
- THE CONTRACTOR SHALL NOTIFY THE CONSTRUCTION DIVISION BY TELEPHONE, BUREAU 9-2747, EXT. 8150, AT LEAST TWENTY-FOUR HOURS BEFORE STARTING ANY WORK UNDER THIS CONTRACT.
- MANHOLES SHALL BE BRICK SEWER STRUCTURES PER S-4, RECAST CONCRETE MANHOLES PER S-4 OR S-4 EXCEPT AS NOTED.
- "Y" OR "V" BRANCHES MAY BE USED FOR CONNECTIONS TO MAINLINE SEWERS EXCEPT AS NOTED.
- USE EXTRA STRENGTH PIPE ALL PIPE IS STANDARD DEPTH EXCEPT AS NOTED.
- VITRIFIED CLAY PIPE JOINTS SHALL BE TYPE B, F, OR B PER STD. SPECIFICATIONS SEC. 208-2.
- IF A POWER POLE IS WITHIN THREE FEET OF THE SEWER, THE SEWER SHALL BE ENCASED, PER S-28, TWO FEET ON EACH SIDE FROM THE POINT OF INTERFERENCE.
- IF DURING THE COURSE OF CONSTRUCTION IT IS DETERMINED THAT THERE IS LESS THAN FOUR FEET OF COVER OVER THE TOP OF A MAIN LINE OR HOUSE LATERAL V.C.P. SEWER WHICH IS NOT INDICATED ON THE PLANS, THE PIPE SHALL BE ENCASED PER S-25, UNLESS OTHERWISE APPROVED BY THE COUNTY ENGINEER.
- HOUSE LATERALS TO BE CONSTRUCTED WITH INVERTS AT PROPERTY LINE A FEET BELOW CURB GRADE EXCEPT AS NOTED.
- REINFORCE ALL TRENCHES WITHIN PAVED AREAS TO MEET L.A. COUNTY ROAD DEPT. OR CALIFORNIA STATE HIGHWAY REQUIREMENTS IN ACCORDANCE WITH PERMITS.
- SEWERS TO BE TESTED FOR LEAKAGE PER SECTION 308-2, 3.7 OF UNIFORM STANDARD SPECIFICATIONS.
- ALL STATE AND LOCAL TRENCH SAFETY ORDERS SHALL BE COMPLIED WITH PER STANDARD SPECIFICATIONS.
- THE FOLLOWING COUNTY ENGINEER STANDARDS APPLY TO THIS PROJECT:
SECTION 114-1.1
LEAKY MANHOLES EXISTING SAFETY REQUIREMENTS... S-2
BRICK MANHOLES EXISTING SAFETY REQUIREMENTS... S-2
NON-REINFORCED PRECAST CONCRETE MANHOLE... S-5
AS REINFORCED PRECAST CONCRETE MANHOLE... S-5
MANHOLE FRAME AND COVER... S-10
BEDDING FOR SEWER PIPE... S-21
TRENCH PROTECTION... S-22
ALLOWABLE TRENCH WIDTHS... S-23

COLLECT CHARGES AS INDICATED

County Sanitation Districts shall be notified prior to the following as they require transportation to be made (Phone 897-1025 - 466-9099)
Acceptance of the project.
No connections for the disposal of industrial wastes shall be made to sewers unless approved in writing without written permission from the Chief Engineer and General Manager of the County Sanitation Districts.

PROFILE, ALIGNMENT AND GRADE OF
SANITARY SEWERS PAGE 1

TRACT NO. 30299
PRIVATE CONTRACT NO. 8165
W.S. 71
4 SHEETS, 8 PAGES
SCALE: HORIZ. 1"=40' VERT. 1"=4' AUGUST, 1968
PREPARED IN THE OFFICES OF
E.L. Bolden Jr.
REG. C.E. NO. 10533
FOR LEGEND SEE PLAN NO. S-1

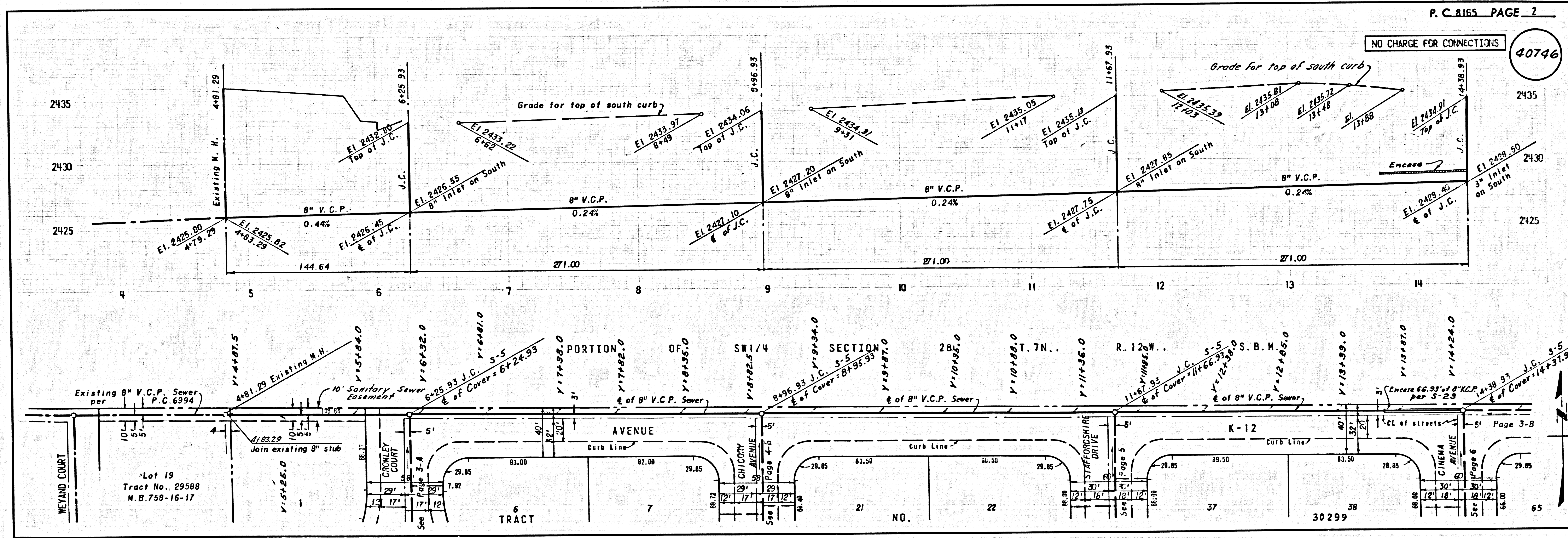
NOTE: WORK SHALL BE CONSTRUCTED IN ACCORDANCE WITH STANDARD SPECIFICATIONS FOR PUBLIC WORKS CONSTRUCTION AND SPECIAL PROVISIONS FOR THE CONSTRUCTION OF SANITARY SEWERS (SECTION 114-1.1, 1.1.1, 1.1.2, 1.1.3, 1.1.4, 1.1.5, 1.1.6, 1.1.7, 1.1.8, 1.1.9, 1.1.10, 1.1.11, 1.1.12, 1.1.13, 1.1.14, 1.1.15, 1.1.16, 1.1.17, 1.1.18, 1.1.19, 1.1.20, 1.1.21, 1.1.22, 1.1.23, 1.1.24, 1.1.25, 1.1.26, 1.1.27, 1.1.28, 1.1.29, 1.1.30, 1.1.31, 1.1.32, 1.1.33, 1.1.34, 1.1.35, 1.1.36, 1.1.37, 1.1.38, 1.1.39, 1.1.40, 1.1.41, 1.1.42, 1.1.43, 1.1.44, 1.1.45, 1.1.46, 1.1.47, 1.1.48, 1.1.49, 1.1.50, 1.1.51, 1.1.52, 1.1.53, 1.1.54, 1.1.55, 1.1.56, 1.1.57, 1.1.58, 1.1.59, 1.1.60, 1.1.61, 1.1.62, 1.1.63, 1.1.64, 1.1.65, 1.1.66, 1.1.67, 1.1.68, 1.1.69, 1.1.70, 1.1.71, 1.1.72, 1.1.73, 1.1.74, 1.1.75, 1.1.76, 1.1.77, 1.1.78, 1.1.79, 1.1.80, 1.1.81, 1.1.82, 1.1.83, 1.1.84, 1.1.85, 1.1.86, 1.1.87, 1.1.88, 1.1.89, 1.1.90, 1.1.91, 1.1.92, 1.1.93, 1.1.94, 1.1.95, 1.1.96, 1.1.97, 1.1.98, 1.1.99, 1.1.100). GRADES TO WHICH THIS IMPROVEMENT IS TO BE CONSTRUCTED ARE SHOWN ON PLANS AND PROFILES. GRADE POINTS FOR TOP OF CURB, CENTER LINE OF STREETS, OR CENTER LINE OF ALLEYS ARE SHOWN BY CIRCLES ON PROFILES. AT ALL POINTS BETWEEN DESIGNATED POINTS THE GRADE SHALL BE ESTABLISHED SO AS TO CONFORM TO A STRAIGHT LINE DRAWN BETWEEN SAID DESIGNATED POINTS. ELEVATIONS ARE IN FEET ABOVE U.S.C. & G.S. MEAN LEVEL DATUM OF 1929.
THIS DRAWING AND THE DATA HEREON ARE HEREBY MADE A PART OF THE SPECIFICATIONS.

BEFORE WORK CAN BE STARTED, THE CONTRACTOR MUST OBTAIN A PERMIT TO EXCAVATE IN COUNTY STREETS FROM THE L.A. COUNTY ROAD DEPT., DISTRICT OFFICE NO. 1, AND PAY A FEE TO THE COUNTY ENGINEER, ROOM 300, COUNTY ENGINEERING BUILDING, 1200 SOUTH SPRING STREET, LOS ANGELES, CALIFORNIA. APPROVAL OF THIS PLAN BY THE COUNTY OF LOS ANGELES DOES NOT CONSTITUTE A REPRESENTATION AS TO THE ACCURACY OF THE LOCATION OF OR THE EXISTENCE OR NON-EXISTENCE OF ANY UNDERGROUND UTILITY PIPE, OR STRUCTURE WITHIN OF THIS PROJECT. THIS NOTE APPLIES TO ALL PAGES.

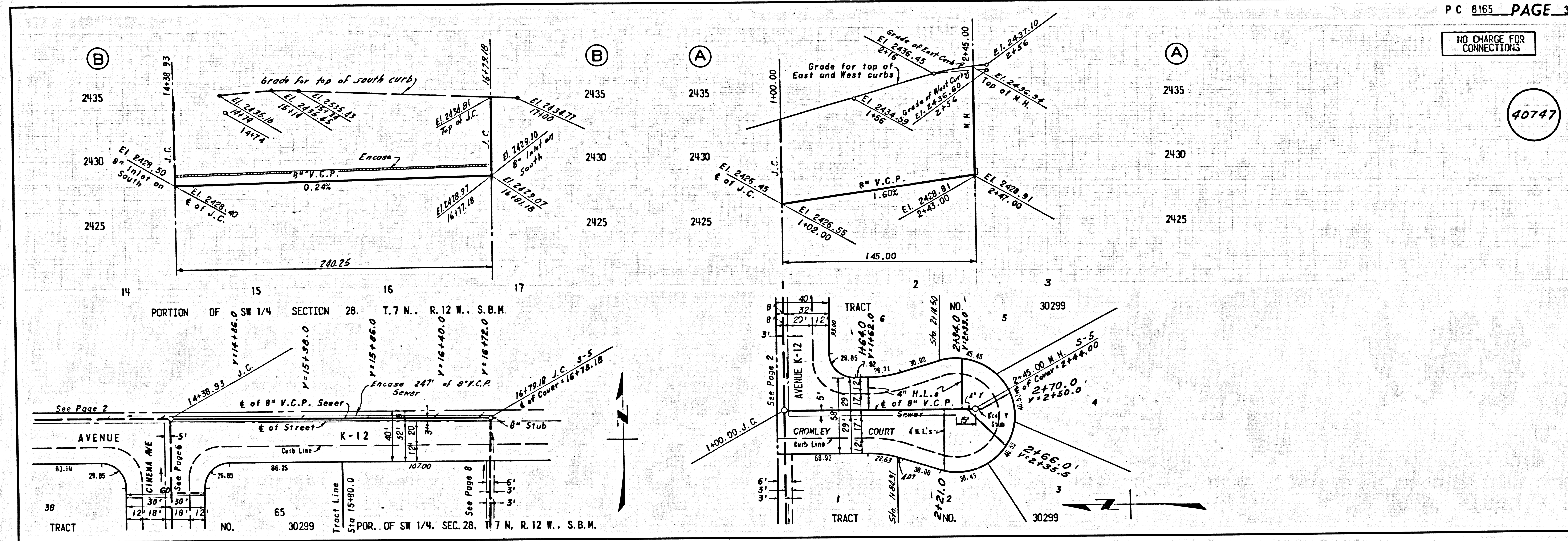
IF WORK IS TO BE DONE IN A STATE HIGHWAY, A PERMIT MUST BE OBTAINED FROM THE STATE OF CALIFORNIA, DIVISION OF HIGHWAYS, 1200 SOUTH SPRING STREET, LOS ANGELES, CALIFORNIA.
COUNTY OF LOS ANGELES, CALIFORNIA
JOHN A. LAMBIE, COUNTY ENGINEER J. D. PARKHURST, CHIEF ENGINEER
APPROVED BY *John A. Lambie* 12/13/68 REG. CIVIL ENGINEER (DATE) APPROVED BY *J. D. Parkhurst* OFFICE ENGINEER

CHECKED BY *Richard L. Koppeck* 12-13-68 (DATE) REG. C.E. NO. 10533
J. N. 0250.02

2818 29



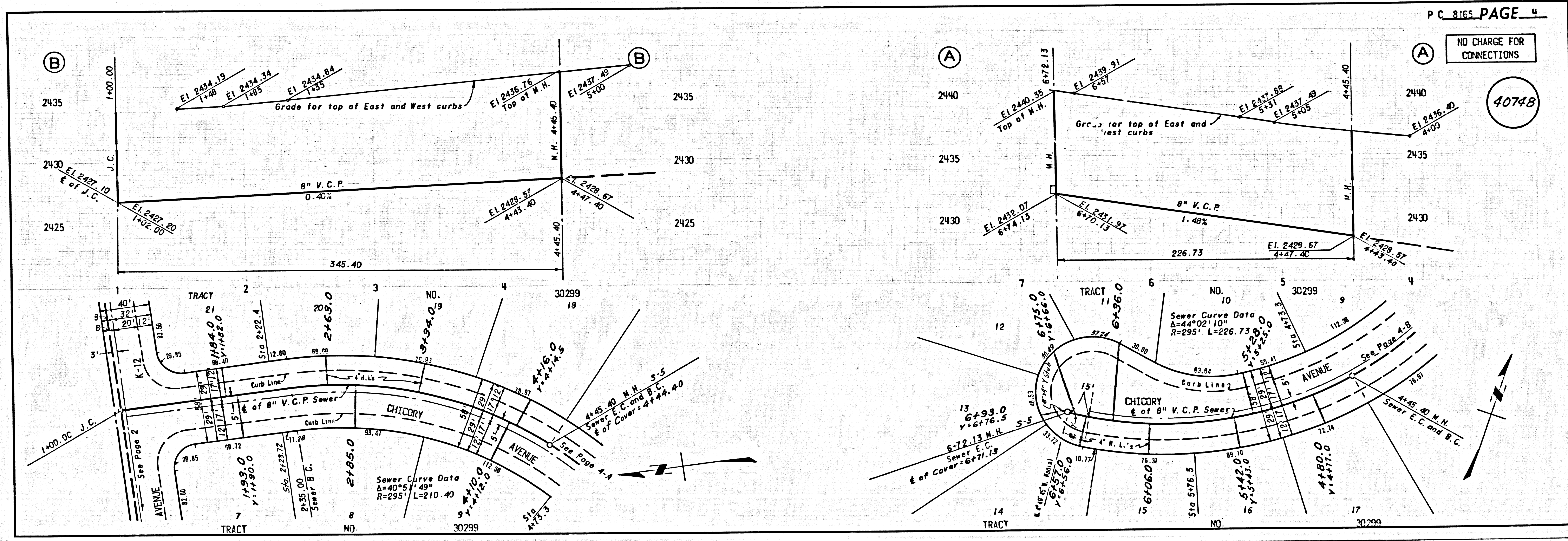
BC 8182



NO CHARGE FOR CONNECTIONS

40747

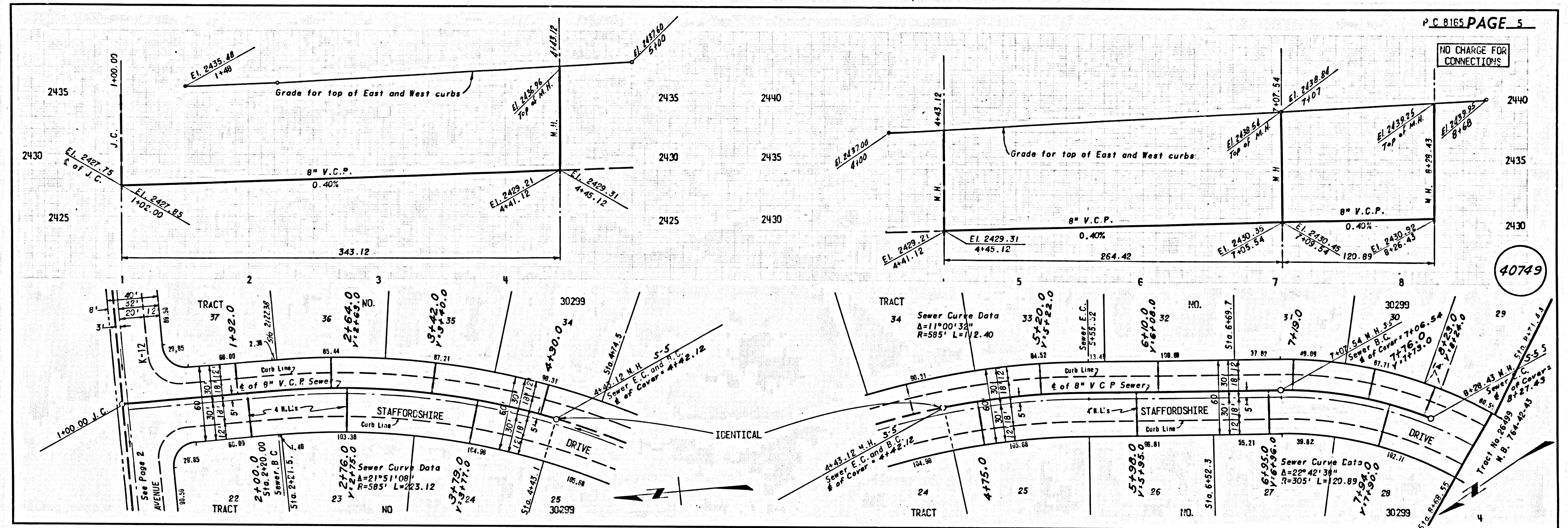
BC 8182



NO CHARGE FOR CONNECTIONS

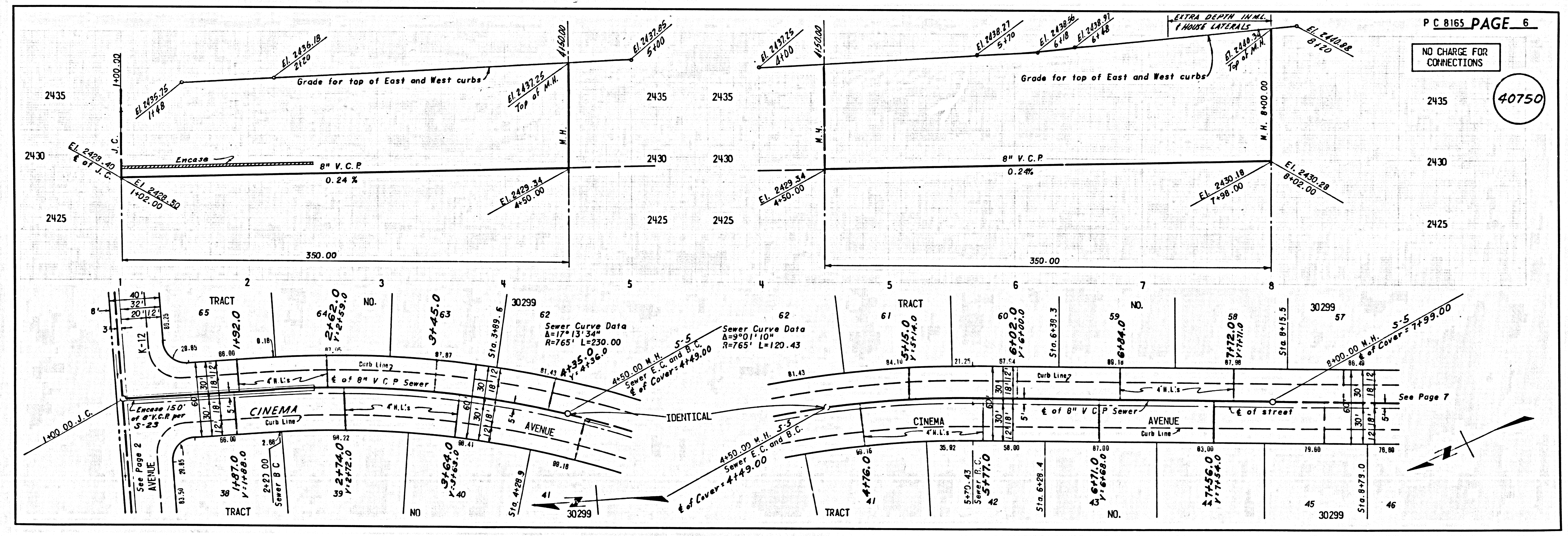
40748

BC 8182

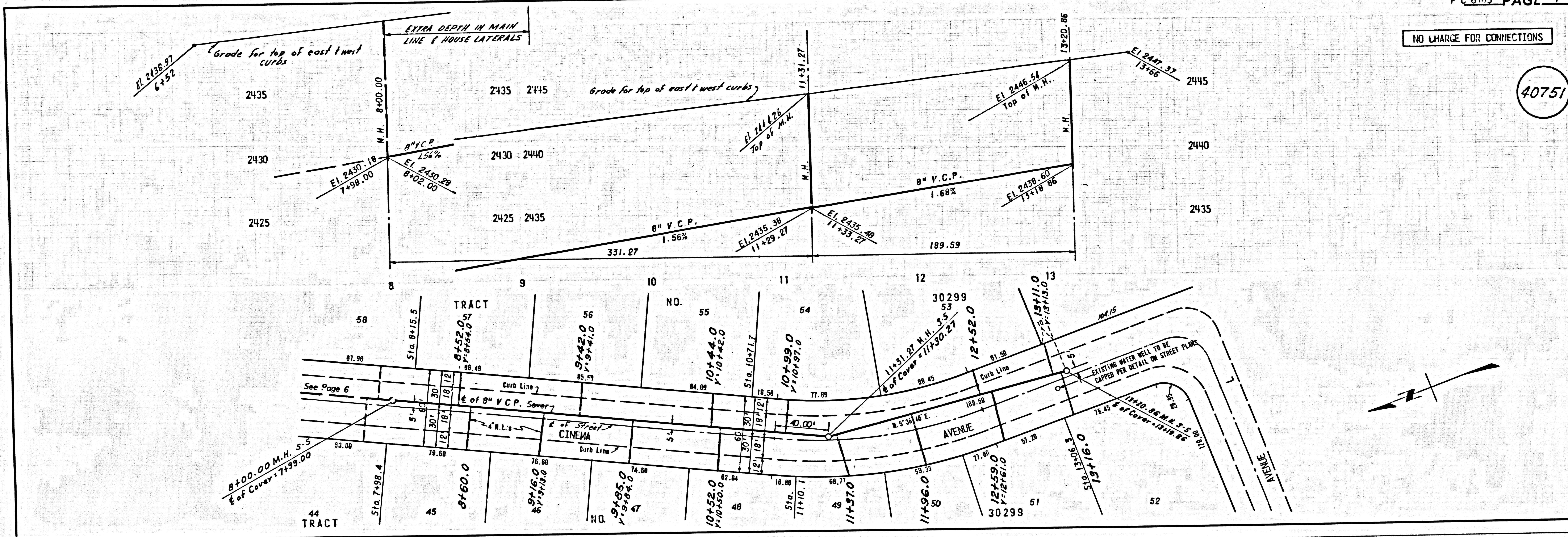


BC 8182

BC 8182



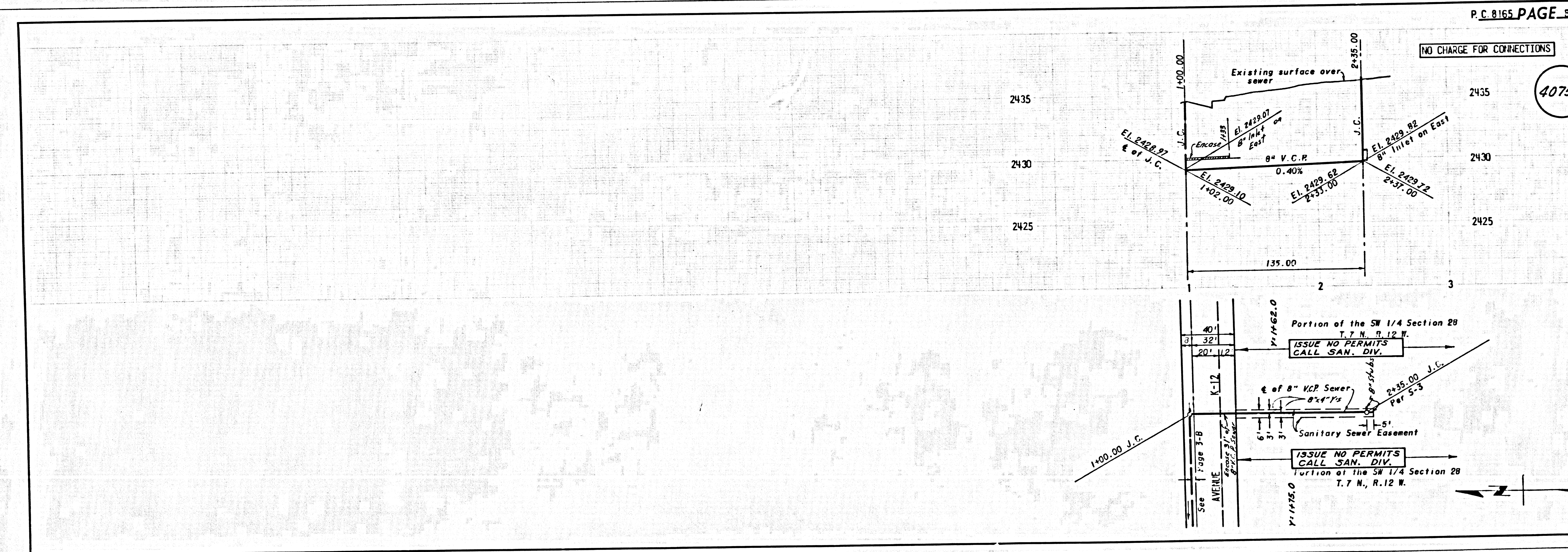
bc 8182



NO CHARGE FOR CONNECTIONS

40751

bc 8182



NO CHARGE FOR CONNECTIONS

40752