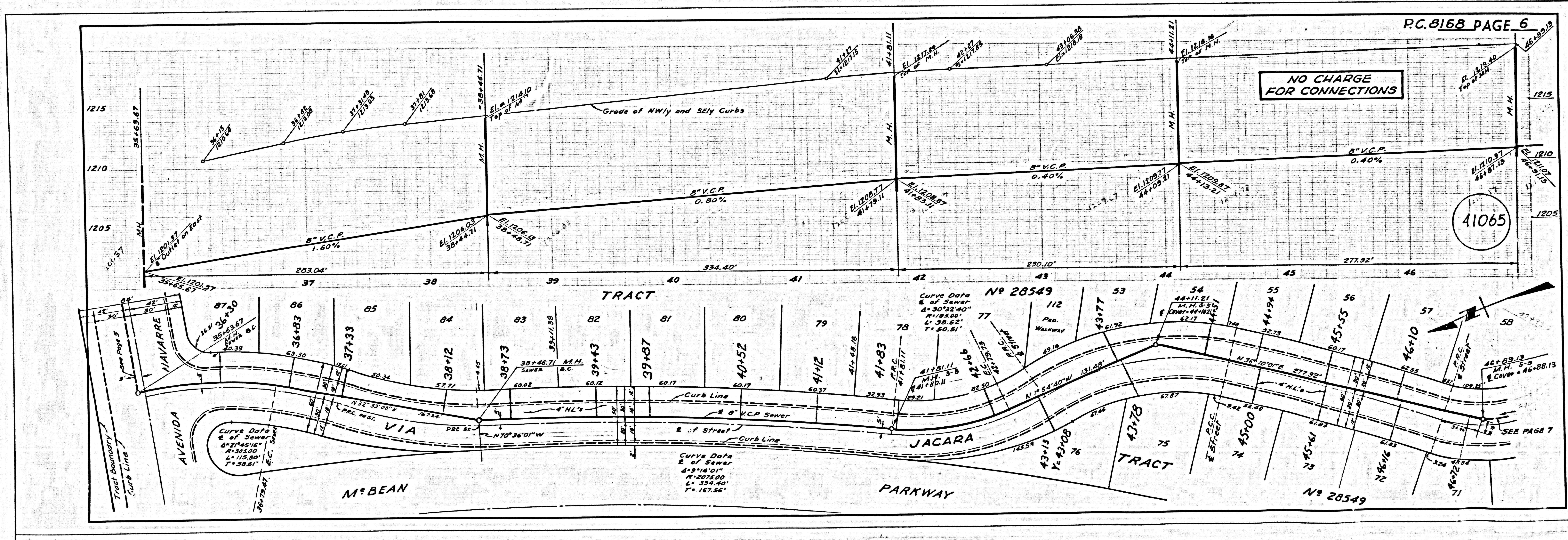
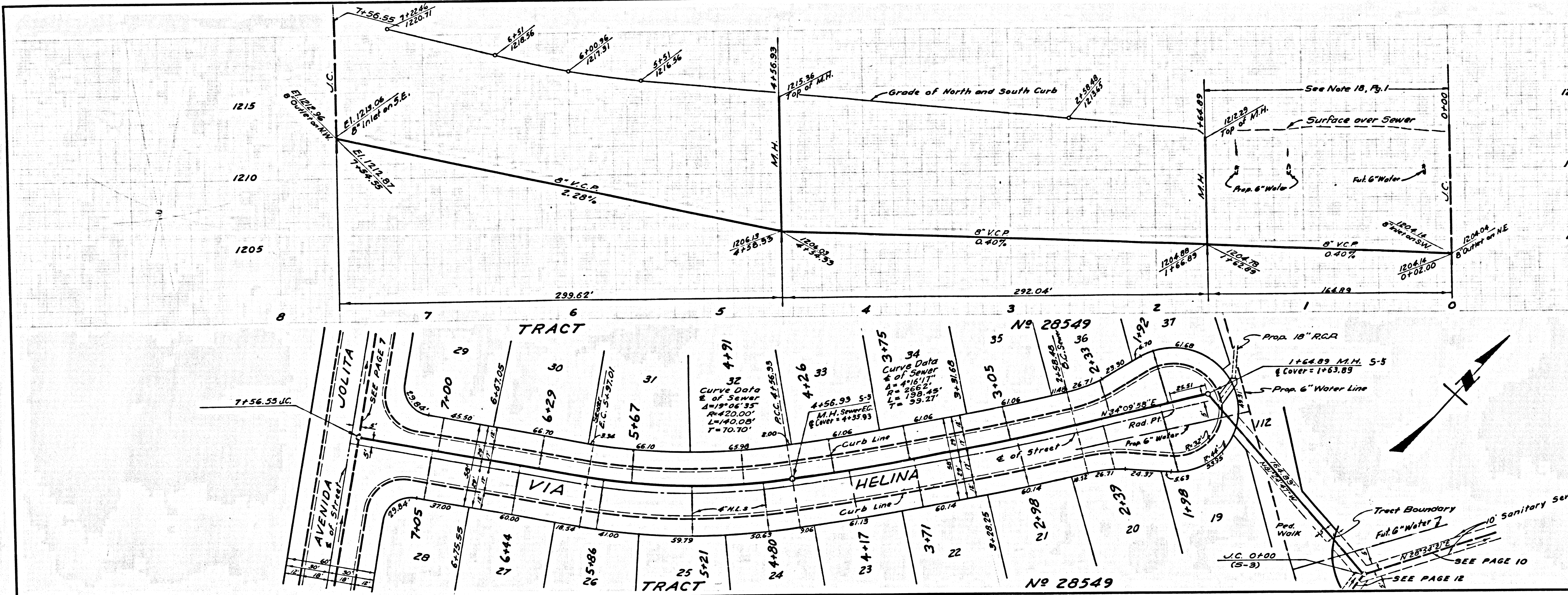


LA COUNTY SEWER SHEET NO. 8 SOUTHERN CALIFORNIA BLUEPRINT CO. 3/22/58

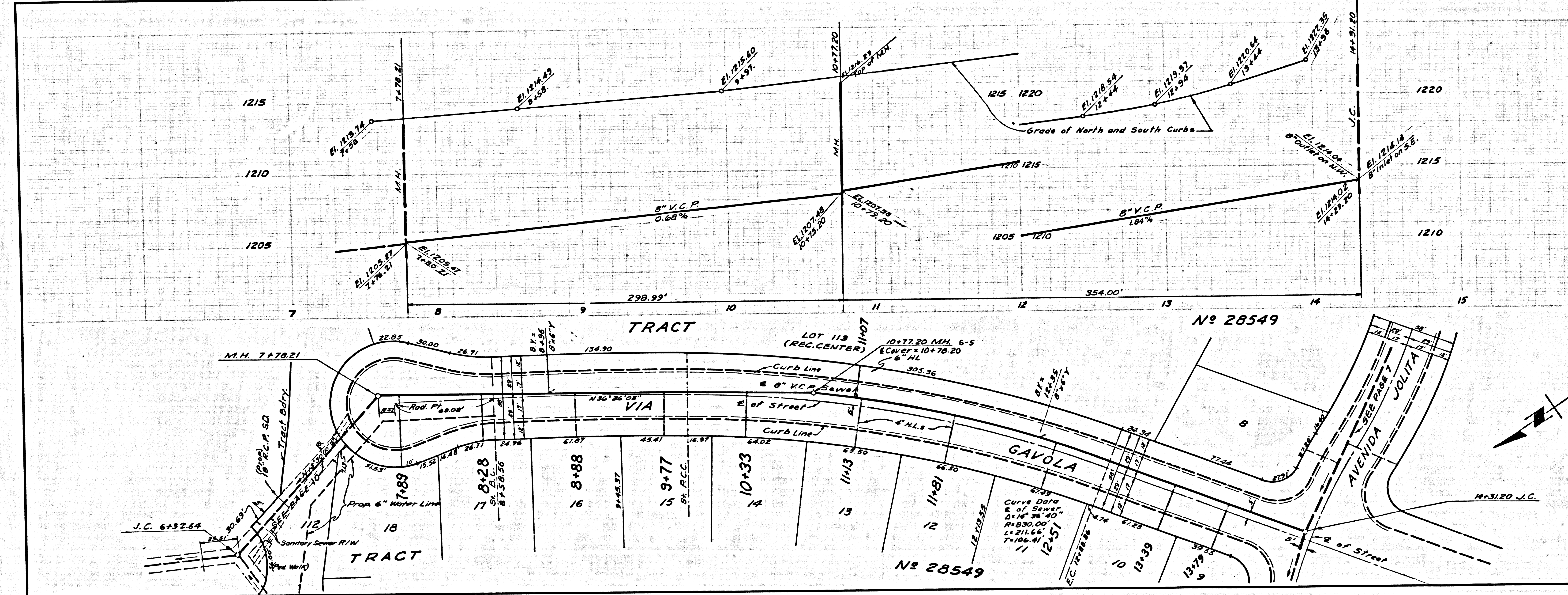


NO CHARGE FOR CONNECTIONS



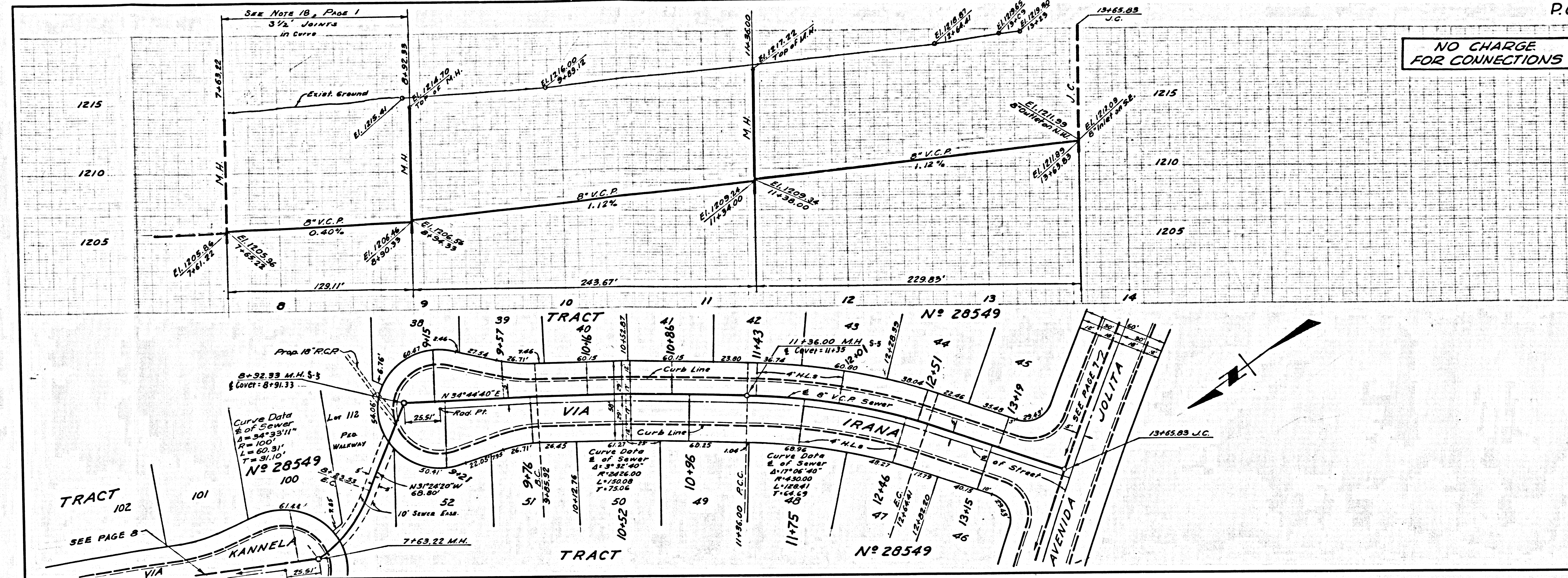
41070

NO CHARGE FOR CONNECTIONS



41071

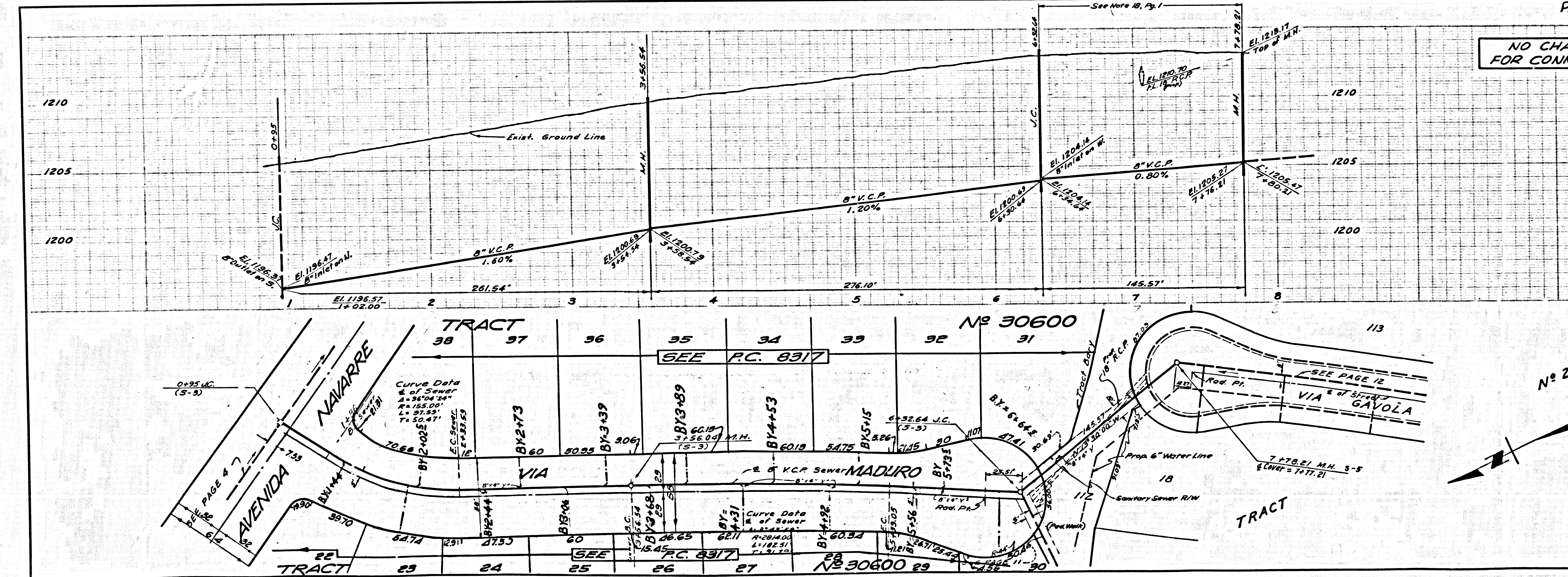
NO CHARGE FOR CONNECTIONS



41068

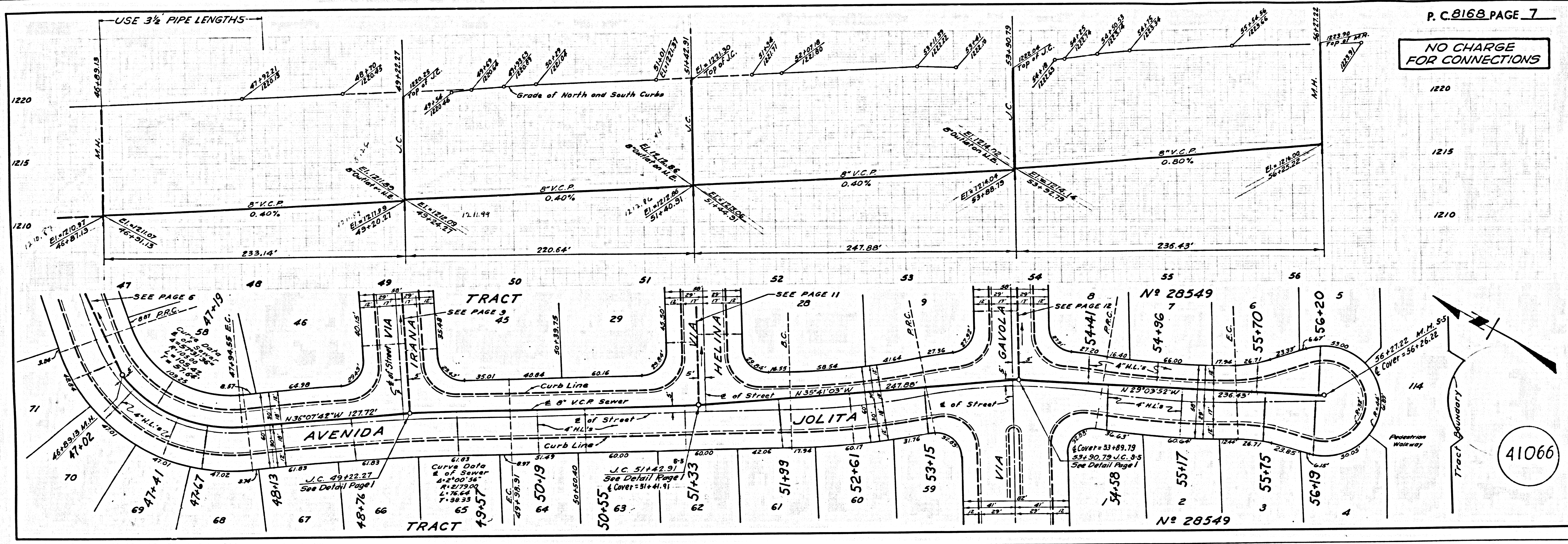
L.A. COUNTY SEWER SHEET NO. 2 SOUTHERN CALIFORNIA BLUEPRINT CO.

NO CHARGE FOR CONNECTIONS

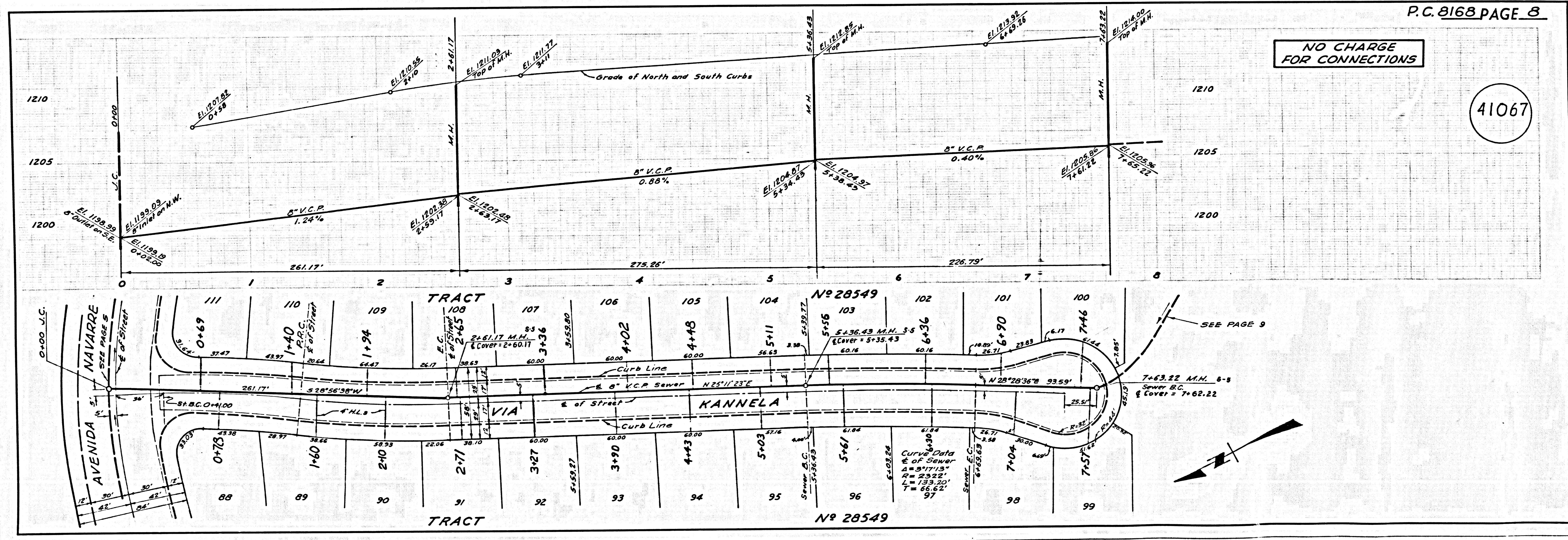


41069

L.A. COUNTY SEWER SHEET NO. 2 SOUTHERN CALIFORNIA BLUEPRINT CO.



L.A. COUNTY SEWER SHEET NO. 1 SOUTHERN CALIFORNIA BLUEPRINT CO.



P.C. 8168 PAGE 8

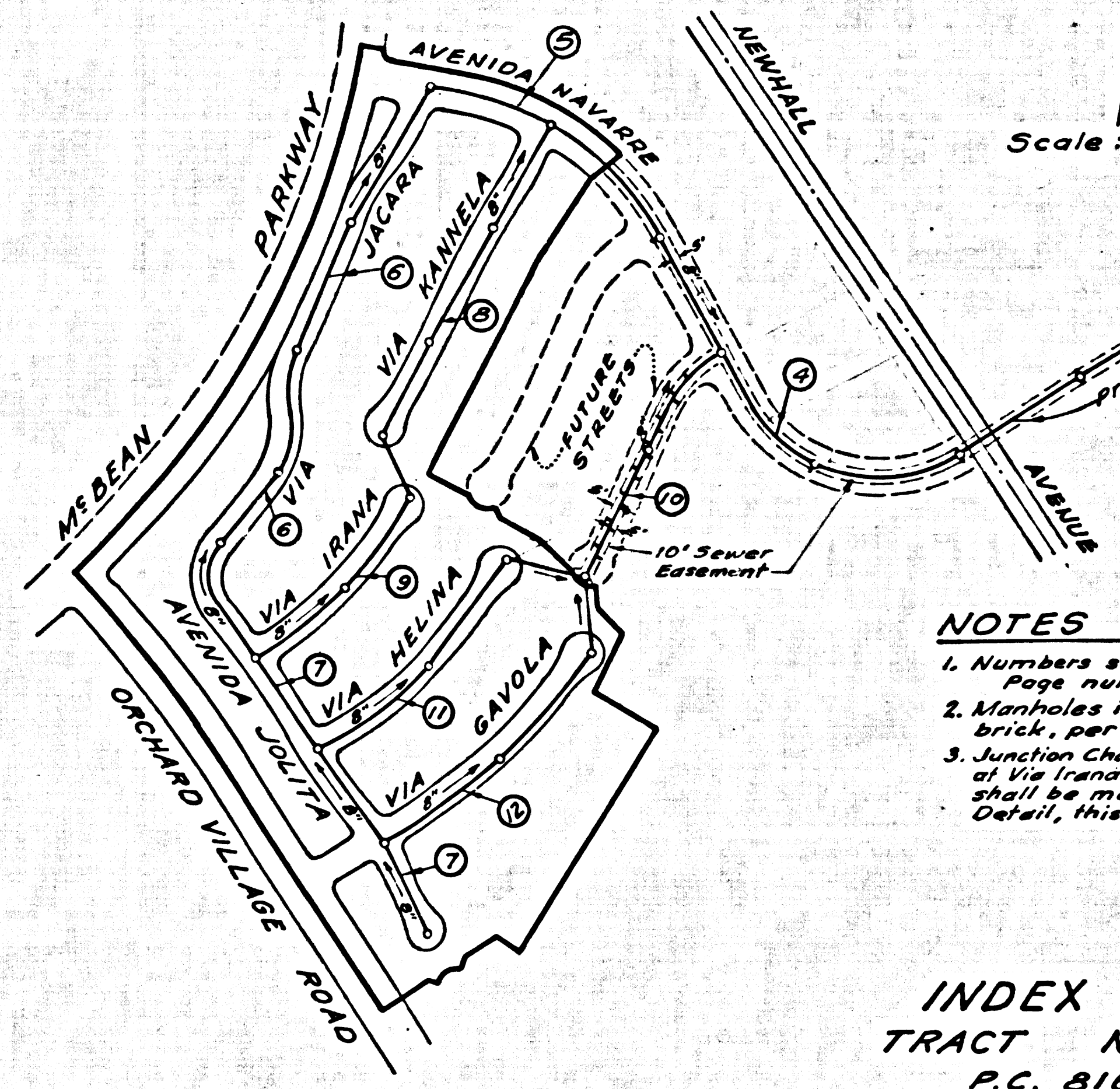
P.C. 8168 7

41067

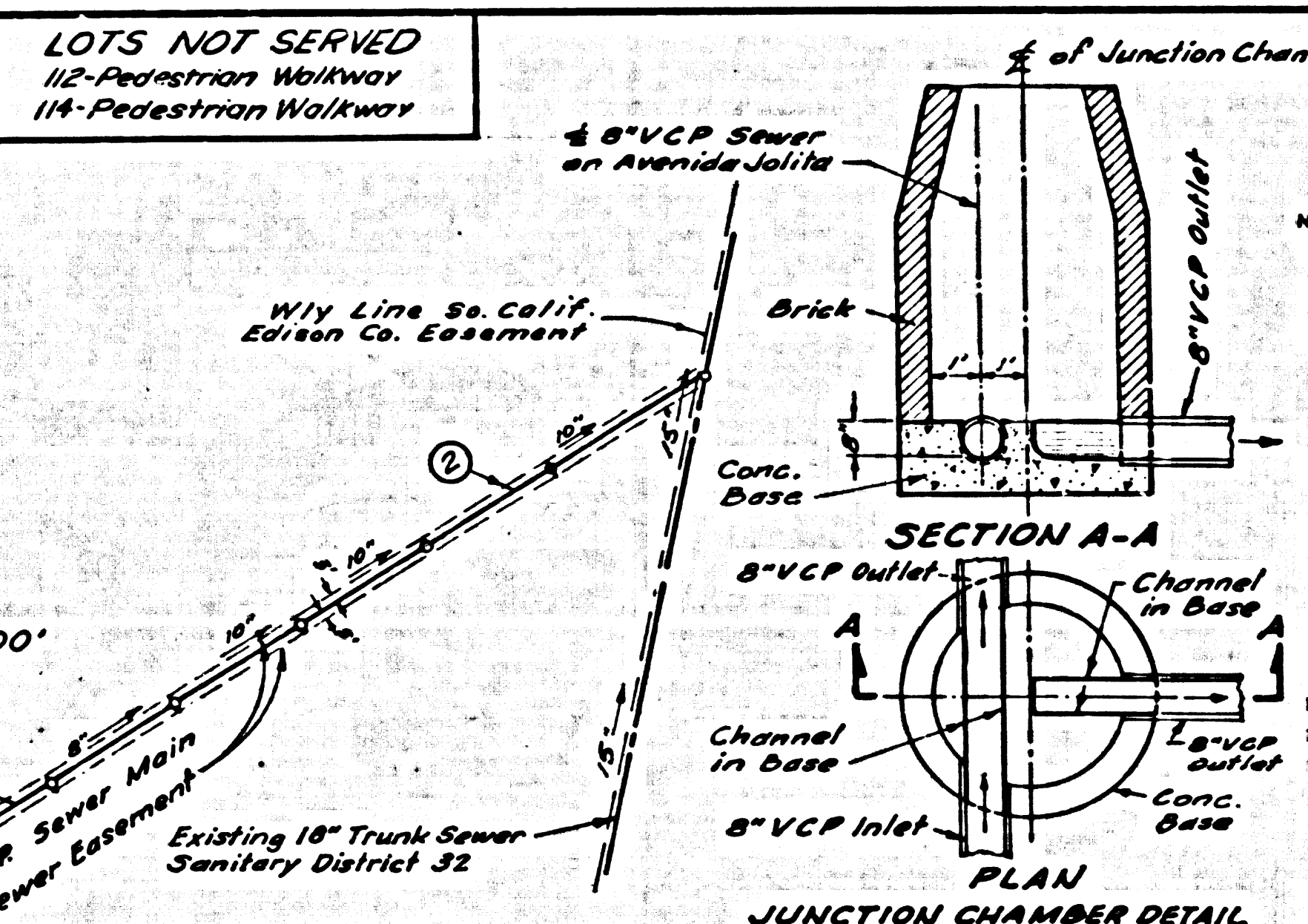
41066

B.M. B.L. 608 ELEV. 1216.345
 U.S.C. & G.S. Mon. S. and Aridge 33-14 over
 Placerito Creek 3/4 mi. S. and C.B. 18' E. of
 E. San Fernando Av. E. 10 mi. N. of Newhall
 Sta. Wht. (0370 1953)
NEWHALL QUAD. 1963

LOTS NOT SERVED
 1/2-Pedestrian Walkway
 1/4-Pedestrian Walkway



Scale: 1" = 300'



NOTICE TO CONTRACTOR
 The existence and location of any underground pipe, or structures shown on these plans were obtained by a search of available records. To the best of our knowledge there are no existing utilities except as shown on these plans. The contractor is required to take precautionary measures to protect the existing utility lines and any lines not of record or not shown on these plans.

NOTES

1. Numbers shown in circles indicate Page number of Plans.
2. Manholes in office sewer shall be brick, per Standard Plan S-3.
3. Junction Chambers on Avenida Jolita at Via Trama, Via Helina, and Via Gavola shall be modified S-3 Manholes. See Detail, this Page.

County Sanitation Districts shall be notified prior to the following so that required inspection can be made (Phone 333-3022 x 4-600-600)

Consentment of construction of manhole on District trunk sewer.

(Signature of the project)

COLLECT CHARGES AS INDICATED

INDEX MAP
 TRACT No. 28549
 P.C. 8168

NEWHALL BLDG. DIST. NO. 82

- NOTES:**
1. PROVIDE STAKES ON THE PROPERTY LINE OR PROPERTY LINES PRODUCED AT RIGHT ANGLES TO THE SEWER LINE AT THE CENTER LINE OF EACH MANHOLE.
 2. NO REPRESENTATIVE OF THE COUNTY ENGINEER WILL SURVEY OR LAY OUT ANY PORTION OF THE WORK.
 3. THE PRIVATE ENGINEER SHALL FURNISH THE COUNTY ENGINEER WITH GRADE SHEETS AND STATIONING FOR ALL HOUSE LATERALS AND 1" OR 2" BRANCHES AND SHALL PROVIDE STAKES FOR THEM AT THEIR PROPER LOCATIONS WITH STATIONING PLAINLY MARKED. ALL HOUSE LATERALS SHALL BE CONSTRUCTED IN A STRAIGHT ALIGNMENT AT RIGHT ANGLES FROM THE MAIN LINE SEWER EXCEPT AS SHOWN ON THE PLANS. HOUSE LATERALS FROM CHIMNEYS SHALL NOT HAVE AN ANGLE OF LESS THAN 45° WITH THE MAIN LINE SEWER. ANY CHANGE IN ALIGNMENT SHALL BE REQUESTED IN WRITING BY THE PRIVATE ENGINEER.
 4. THE PRIVATE ENGINEER SHALL FURNISH THE HOUSE LATERAL DEPTH AT THE PROPERTY LINE BELOW THE TOP OF CURB ELEVATION FOR EACH HOUSE LATERAL ON THE GRADE SHEET.
 5. NO REVISIONS SHALL BE MADE IN THESE PLANS WITHOUT THE APPROVAL OF THE COUNTY ENGINEER.
 6. THE CONTRACTOR SHALL NOTIFY THE CONSTRUCTION DIVISION BY TELEPHONE, MADISON 9-4747, EXT. 8181, AT LEAST TWENTY-FOUR HOURS BEFORE STARTING ANY WORK UNDER THIS CONTRACT.
 7. ALL STRUCTURES SHALL BE BUILT BRICK MANHOLES PER S-3 OR PRECAST CONCRETE MANHOLES PER S-4 OR S-5, EXCEPT AS NOTED.
 8. FOR CONNECTIONS TO MAINLINE SEWERS "Y" OR "T" BRANCHES MAY BE USED EXCEPT AS NOTED.
 9. MANHOLE TOPS IN UNIMPROVED RIGHTS-OF-WAY TO BE SIX INCHES ABOVE FINISHED GRADE.
 10. USE EXTRA STRENGTH PIPE. ALL PIPE IS STANDARD DEPTH EXCEPT AS NOTED.
 11. VITRIFIED CLAY PIPE JOINTS SHALL BE TYPE "D" OR "D" PER STANDARD SPECIFICATIONS SECTION 508-2.
 12. IF A POWER POLE IS WITHIN THREE FEET OF THE SEWER, THE SEWER SHALL BE ENCASED, PER S-23, TWO FEET ON EACH SIDE FROM THE POINT OF INTERFERENCE.
 13. IF DURING THE COURSE OF CONSTRUCTION IT IS DETERMINED THAT THERE IS LESS THAN FOUR FEET OF COVER OVER THE TOP OF A MAIN LINE OR HOUSE LATERAL V.C.P. SEWER WHICH IS NOT INDICATED ON THE PLANS, THE PIPE SHALL BE ENCASED PER S-23, UNLESS OTHERWISE APPROVED BY THE COUNTY ENGINEER.
 14. HOUSE LATERALS TO BE CONSTRUCTED WITH INVERTS AT PROPERTY LINE 4 FEET BELOW CURB GRADE EXCEPT AS NOTED.
 15. REINFORCE ALL TRENCHES WITHIN RAYED AREAS TO MEET L.A. COUNTY ROAD DEPT. OR CALIFORNIA STATE HIGHWAY REQUIREMENTS IN ACCORDANCE WITH PERMITS.
 16. SEWERS TO BE TESTED FOR LEAKAGE PER SECTION 508-2.17 UNIFORM STANDARD SPECIFICATIONS.
 17. REFER TO SECTION 7-10.4.1 OF THE STANDARD SPECIFICATIONS, REGARDING SAFETY ORDERS.
 18. SPECIAL SCHEDULES IN DESIGNATED AREAS.
 19. BACKFILL TRENCHES AND REPLACE OTHER EARTH REQUIRED SO AS TO ACHIEVE THE NATURAL OR PREPARED GRADES AND SLOPES SHOWN ON THE GRADING PLAN APPROVED FOR THIS TRACT BY THE BUILDING AND SAFETY DIVISION.
 20. ALL SCHEDULES AND EARTH REPLACES SHALL BE COMPLETED WITHIN A PERIOD OF SIX MONTHS FROM THE DATE OF THE GRADING PLAN APPROVED FOR THIS TRACT BY THE BUILDING AND SAFETY DIVISION.
 21. METHOD OF TEST SHALL BE AS NOTED. ACCEPTABLE CERTIFICATION OF SUCH CONNECTION SHALL BE SUBMITTED TO THE CONSTRUCTION DIVISION.
 22. ALL JOINTS BETWEEN CAST IRON PIPE AND VITRIFIED CLAY PIPE SHALL BE MADE WITH A RUBBER SLEEVE JOINT, TYPE "C" OR "D", (WITH BUSHING IF NECESSARY) PER STANDARD SPECIFICATIONS, SECTION 508-2.
 23. SEWER PIPE BEDDING SHALL CONFORM TO S-31.

THE FOLLOWING COUNTY ENGINEER STANDARD PLANS APPLY TO THIS PROJECT:

- LEGEND**
- MINIMUM PUBLIC SAFETY REQUIREMENTS S-1
 - BRICK MANHOLE S-3
 - NON-REINFORCED PRECAST CONCRETE MANHOLE S-4
 - REINFORCED PRECAST CONCRETE MANHOLE S-5
 - MANHOLE FRAME AND COVER S-6
 - MANHOLE STEP S-7
 - BEDDING FOR SEWER PIPE S-21
 - CRADLING AND ENGAGEMENT S-23
 - WYE OR TEE SUPPORT S-25
 - ALLOWABLE TRENCH WIDTHS S-33

THE FOLLOWING COUNTY SANITATION DISTRICT STANDARDS APPLY TO THIS PROJECT:

- STANDARD MANHOLE & JUNCTION CHAMBER, TYPE "A" S-4-30
- STANDARD MANHOLE FRAME & COVER S-4-30

REVISION: New alignment from Sta. 5+54.63 to District Trunk Line (Page 2) *Wm. Lopez* DATE: 2-3-69
 Approved: *Wm. Lopez* OFFICE OF THE COUNTY ENGINEER

REVISION: New point of connection to Trunk. Added 6' to first trench. *Wm. Lopez* DATE: 1-16-69
 Approved: *Wm. Lopez* OFFICE OF THE COUNTY ENGINEER

PROFILE ALIGNMENT AND GRADE OF
SANITARY SEWERS P.C. 8168
 TO BE CONSTRUCTED IN PAGE 1
 TRACT No. 28549

PRIVATE CONTRACT NO. 8168

W.S. 62
 6 SHEETS; 12 PAGES
 SCALE: VERT. 1" = 4' HORIZ. 1" = 40'
 DECEMBER, 1968
 PREPARED IN THE OFFICES OF
VALLEY CONSULTANTS, INC.
 24903 SAN FERNANDO ROAD
 NEWHALL, CALIFORNIA
 REG. C. E. NO. 10313
 FOR LEGEND SEE PLAN NO. S-1

NOTES:
 GRADES TO WHICH THIS IMPROVEMENT IS TO BE CONSTRUCTED ARE SHOWN ON PLANS AND PROFILES. GRADE POINTS FOR TOP OF CURB, CENTER LINE OF STREETS, OR CENTER LINE OF ALLEYS ARE SHOWN BY CIRCLES ON PROFILES. AT ALL POINTS BETWEEN DESIGNATED POINTS THE GRADE SHALL BE ESTABLISHED SO AS TO CONFORM TO A STRAIGHT LINE DRAWN BETWEEN SAID DESIGNATED POINTS. ELEVATIONS ARE IN FEET ABOVE U.S.C. & G.S. SEA LEVEL DATUM OF 1929.

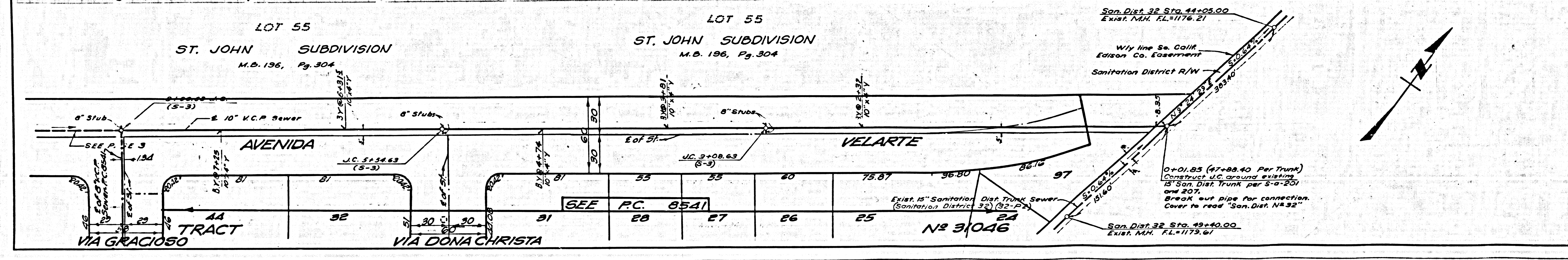
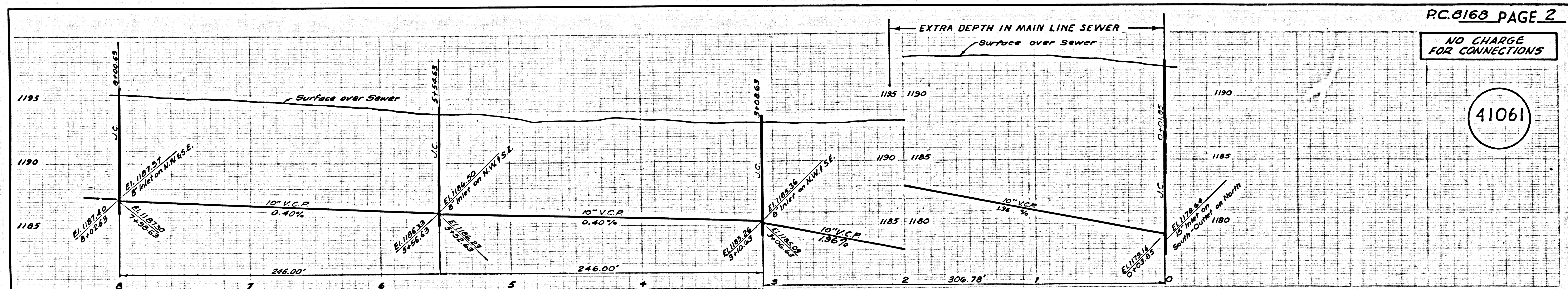
THE ENGINEER AND ARCHITECT ASSUME NO RESPONSIBILITY FOR PUBLIC WORKS CONSTRUCTION AND COUNTY ENGINEER SPECIAL PROVISIONS DATE JANUARY 1, 1962, AS REVISED, AND SHALL BE PROSECUTED ONLY IN THE PRESENCE OF THE COUNTY ENGINEER.

NO CONNECTIONS FOR THE DISPOSAL OF INDUSTRIAL WASTE SHALL BE MADE TO SEWERS SUBJECT TO THESE CONDITIONS WITHOUT WRITTEN PERMISSION FROM THE CHIEF ENGINEER AND GENERAL MANAGER OF THE COUNTY SANITATION DISTRICTS.

COUNTY OF LOS ANGELES, CALIFORNIA
 JOHN A. LAMBIE, COUNTY ENGINEER J. D. PARKHURST, CHIEF ENGINEER
 APPROVED BY: *John A. Lambie* REGIONAL ENGINEER APPROVED BY: *J. D. Parkhurst* OFFICE ENGINEER

CHECKED BY: *Wm. Lopez* DATE: 1-16-69
 REG. C. E. NO. 9466

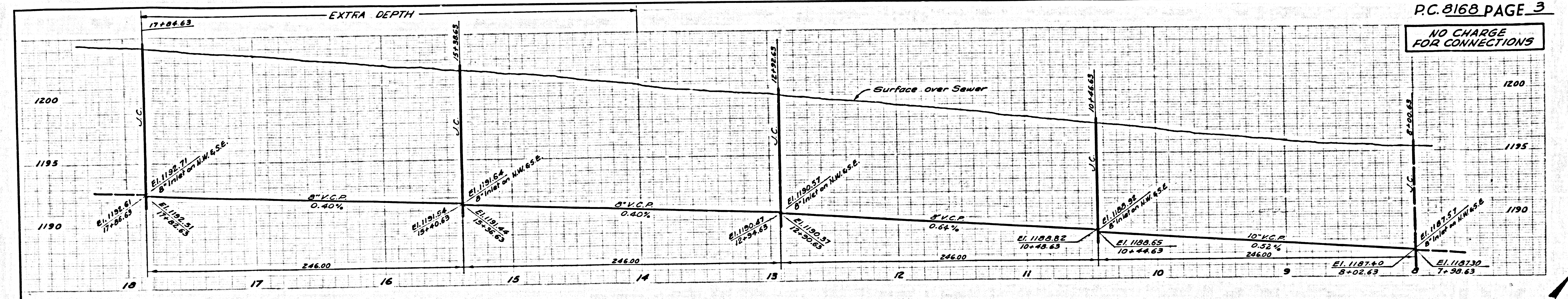
P.C. 8168 PAGE 2



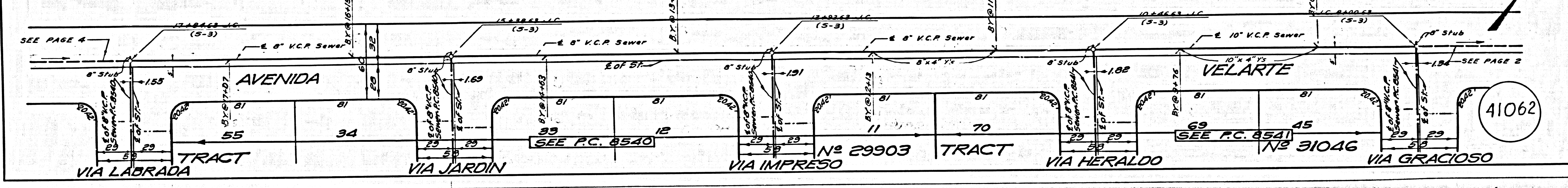
NO CHARGE FOR CONNECTIONS

41061

NO CHARGE FOR CONNECTIONS

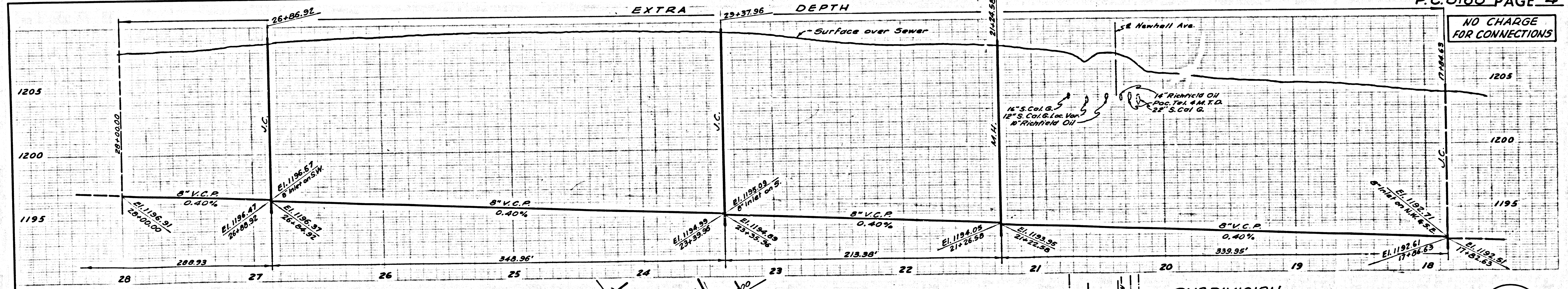


ST. JOHN SUBDIVISION M.B. 136, Pg. 304 LOT 55



LA COUNTY SEWER SHEET NO. 2 SOUTHERN CALIFORNIA BLUEPRINT CO. 7/25/58

NO CHARGE FOR CONNECTIONS



ST. JOHN SUBDIVISION M.B. 136, Pg. 304 LOT II

