

B.M. 3139 A ELEV. 88.711  
 LEAD WIRE SPIKE WEST CURB 1" 2"  
 NORTH BCR @ UN. CO. AVALON BLVD.  
 COMPTON BLVD. 40' 2" W. 15' 3"  
 N. OF & INTERSECTION  
 GARDENA QUAD. 19 60

DATE	REVISIONS	APPROVED
3/24/69	Revised profile between Sta. 0+00 to Sta. 0+36. Replaced 10" 10" V.C.P. with 10" 10" V.C.P. under existing Southern California Edison Co. duct beam and remodel channel in base of M.H. at Sta. 0+00	B. V. Uchida

### LENNOX BLDG. DIST. NO. 7

PROFILE, ALIGNMENT AND GRADE OF  
**SANITARY SEWERS** PAGE 1  
 TO BE CONSTRUCTED IN

**COMPTON BLVD.**

PRIVATE CONTRACT NO. 8169

W.S. 26

1 SHEET 2 PAGES

DATE: SEPT., 1968

SCALE: HORIZ. 1"=40'

VERT. 1"=4'

PREPARED BY THE OFFICE OF

PAUL H. BARRIOS TEL. 321-1515

By Paul H. Barrios REG. C. E. NO. 15887

FOR LEGEND SEE PLAN NO. S-1

NOTE: TO WHICH THIS IMPROVEMENT IS TO BE CONSTRUCTED ARE SHOWN ON PLANS AND PROFILE GRADE POINTS FOR TOP OF CURBS, CENTER LINE OF STREETS, OR CENTER LINE OF ALLEYS ARE SHOWN BY CIRCLES ON PROFILES. AT ALL POINTS BETWEEN DESIGNATED POINTS THE GRADE SHALL BE ESTABLISHED TO CONFORM TO A STRAIGHT LINE DRAWN BETWEEN SAID DESIGNATED POINTS. ELEVATIONS ARE IN FEET ABOVE U.S.C. & G.S. SEA LEVEL DATUM OF 1929.

THIS DRAWING AND THE DATA HEREON ARE PREPARED IN ACCORDANCE WITH THE SPECIFICATIONS FOR PUBLIC WORKS CONSTRUCTION AND COUNTY ENGINEER'S SPECIAL PROVISIONS DATED FEBRUARY, 1968. THE CONTRACTOR SHALL BE RESPONSIBLE FOR OBTAINING ALL NECESSARY PERMITS FROM THE L.A. COUNTY PUBLIC WORKS DEPARTMENT AND THE COUNTY ENGINEER, ROOM 300, COUNTY ENGINEERING BUILDING, 100 WEST SECOND STREET, LOS ANGELES, CALIFORNIA 90012. THE CONTRACTOR SHALL BE RESPONSIBLE FOR COVERING THE COST OF CONSTRUCTION INSPECTION AND SECOND READING.

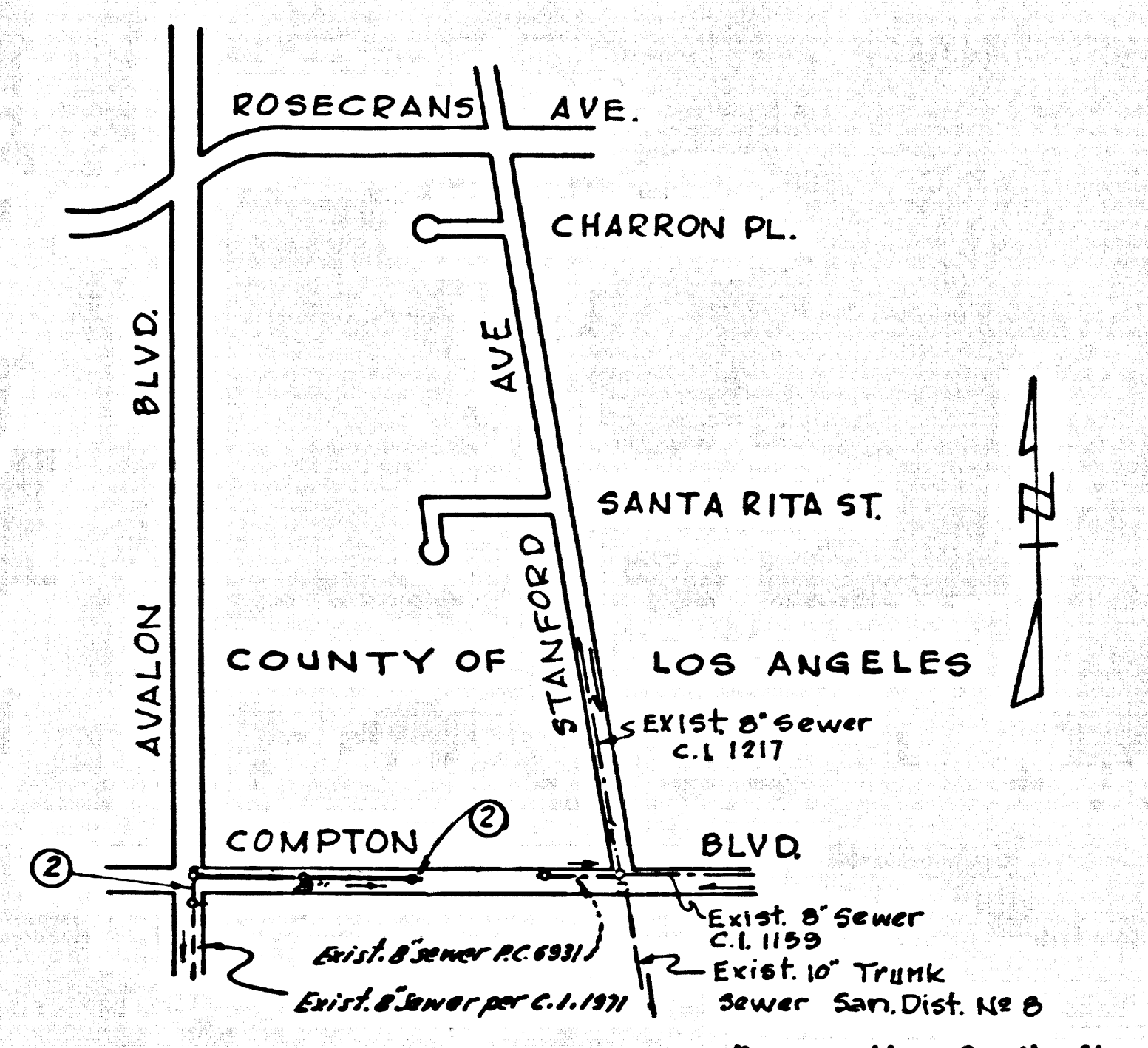
APPROVAL OF THE PLAN BY THE COUNTY OF LOS ANGELES DOES NOT CONSTITUTE A REPRESENTATION AS TO THE ACCURACY OF THE LOCATION OR THE EXISTENCE OR NON-EXISTENCE OF ANY UNDERGROUND UTILITY PIPE OR STRUCTURE WITHIN THE LIMITS OF THE PROJECT. THIS NOTE APPLIES TO ALL PAGES.

IF WORK IS TO BE DONE IN A CITY JURISDICTION A PERMIT MUST BE OBTAINED FROM THE STATE OF CALIFORNIA, DIVISION OF HIGHWAYS, 120 SOUTH BROAD STREET, LOS ANGELES, CALIFORNIA.

COUNTY OF LOS ANGELES, CALIFORNIA  
 JOHN A. LAMBE, COUNTY ENGINEER J. D. PARKHURST, CHIEF ENGINEER  
 CO. 5487, RD. 8  
 APPROVED BY [Signature] Regional Engineer APPROVED BY [Signature] OFFICE ENGINEER

CHECKED BY: [Signature] 12/5/68  
 REG. C. E. NO. 15887

J.N. 0369.39



THE FOLLOWING LATEST REVISED STANDARD PLANS ON FILE IN THE OFFICE OF COUNTY ENGINEER APPLY IN THE CONSTRUCTION OF THIS PROJECT:

LEGEND	SECTION
MINIMUM EXCAVATION SAFETY REQUIREMENTS	S-1
BRICK MANHOLE	S-2
NON-REINFORCED PRECAST CONCRETE MANHOLE	S-3
MANHOLE FRAME AND COVER	S-15
MANHOLE STEP	S-17
BEDDING FOR SEWER PIPE	S-21
CRADLING AND ENCASUREMENT	S-23
WYE OR TEE SUPPORT	S-26
ALLOWABLE TRENCH WIDTHS	S-33

- PROVIDE STAKES ON THE PROPERTY LINE OR PROPERTY LINES PRODUCED AT RIGHT ANGLES TO THE SEWER LINE AT THE CENTER LINE OF EACH MANHOLE.
- NO REPRESENTATIVE OF THE COUNTY ENGINEER WILL SURVEY OR LAY OUT ANY PORTION OF THE WORK.
- THE PRIVATE ENGINEER SHALL FURNISH THE COUNTY ENGINEER WITH GRADE SHEETS AND STATIONING FOR ALL HOUSE LATERALS "T" OR "Y" BRANCHES AND SHALL PROVIDE STAKES FOR THEM AT THEIR PROPER LOCATIONS WITH STATIONING PLAINLY MARKED. ALL HOUSE LATERALS SHALL BE CONSTRUCTED IN A STRAIGHT ALIGNMENT AT RIGHT ANGLES FROM THE MAIN LINE SEWER EXCEPT AS SHOWN ON THE PLANS. HOUSE LATERALS FROM CHIMNEYS SHALL NOT HAVE AN ANGLE OF LESS THAN 45° WITH THE MAIN LINE SEWER. ANY CHANGE IN ALIGNMENT SHALL BE INDICATED BY WRITING BY THE PRIVATE ENGINEER.
- THE PRIVATE ENGINEER SHALL FURNISH THE HOUSE LATERAL DEPTH AT THE PROPERTY LINE BELOW THE TOP OF CURB ELEVATION FOR EACH HOUSE LATERAL ON THE GRADE SHEET.
- NO REVISIONS SHALL BE MADE IN THESE PLANS WITHOUT THE APPROVAL OF THE COUNTY ENGINEER.
- THE CONTRACTOR SHALL NOTIFY THE CONSTRUCTION DIVISION BY TELEPHONE, HANSON 4-8707, EXT. 8159, AT LEAST TWENTY-FOUR HOURS BEFORE STARTING ANY WORK UNDER THIS CONTRACT.
- All structure shall be either brick manholes per S-2 or precast concrete manholes per S-3 or S-4 except as noted.
- T or Y branches may be used for connections to main line sewers except as noted.
- MANHOLE TOPS ON UNIMPROVED HIGHWAYS TO BE SIX INCHES ABOVE FINISHED GRADE.
- USE EXTRA STRENGTH PIPE. ALL PIPE IS STANDARD DEPTH EXCEPT AS NOTED.
- Unfired clay pipe joints shall be type "B" "T" or "S" per Std. Spec. Sec. 208-2.
- IF A POWER POLE IS WITHIN THREE FEET OF THE SEWER, THE SEWER SHALL BE ENCASED, PER S-23, TWO FEET ON EACH SIDE FROM THE POINT OF INTERFERENCE.
- IF DURING THE COURSE OF CONSTRUCTION IT IS DETERMINED THAT THERE IS LESS THAN FOUR FEET OF COVER OVER THE TOP OF A MAIN LINE OR HOUSE LATERAL V.C.P. SEWER WHICH IS NOT INDICATED ON THE PLANS, THE PIPE SHALL BE ENCASED PER S-23, UNLESS OTHERWISE APPROVED BY THE COUNTY ENGINEER.
- HOUSE LATERALS TO BE CONSTRUCTED WITH INFRETS AT PROPERTY LINE 4 FEET BELOW CURB GRADE EXCEPT AS NOTED.
- REINFORCE ALL TRENCHES WITHIN PAVED AREAS TO MEET L.A. COUNTY ROAD DEPT. OR CALIFORNIA STATE HIGHWAY REQUIREMENTS IN ACCORDANCE WITH PERMITS.
- Sewers to be tested for leakage per section 208-2, 3, 7 of the Standard Specifications.
- Refer to section 7-10. a.1 of the Standard Specifications, regarding safety orders.
- CONCRETE PAVEMENT TO BE REPLACED IN ACCORDANCE WITH L.A. COUNTY ROAD DEPT. STANDARD PLAN 40-01

County Sanitation Districts shall be notified prior to the following as their required inspection was made (Phone 399-9669 - 436-3097)

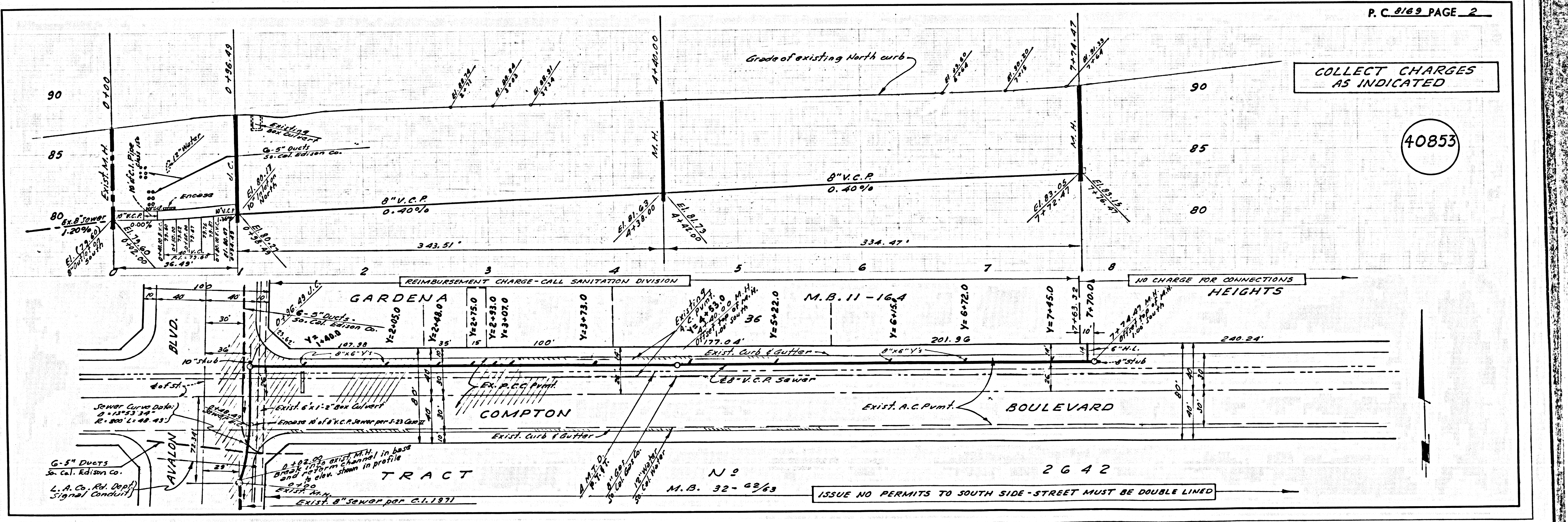
acceptance of the project.

**COLLECT CHARGES AS INDICATED**

**NOTICE TO CONTRACTOR**

The existence and location of any underground utility pipes or structures shown on these plans are obtained by a search of the available records. To the best of my knowledge there are no existing utilities except as shown on these plans. The contractor is required to take due precautionary measures to protect the utility lines shown and any other lines not of record or not shown on these plans.

[Signature] 12/5/68  
 REG. C. E. NO. 15887



**COLLECT CHARGES AS INDICATED**

40853

ISSUE NO PERMITS TO SOUTH SIDE-STREET MUST BE DOUBLE LINED