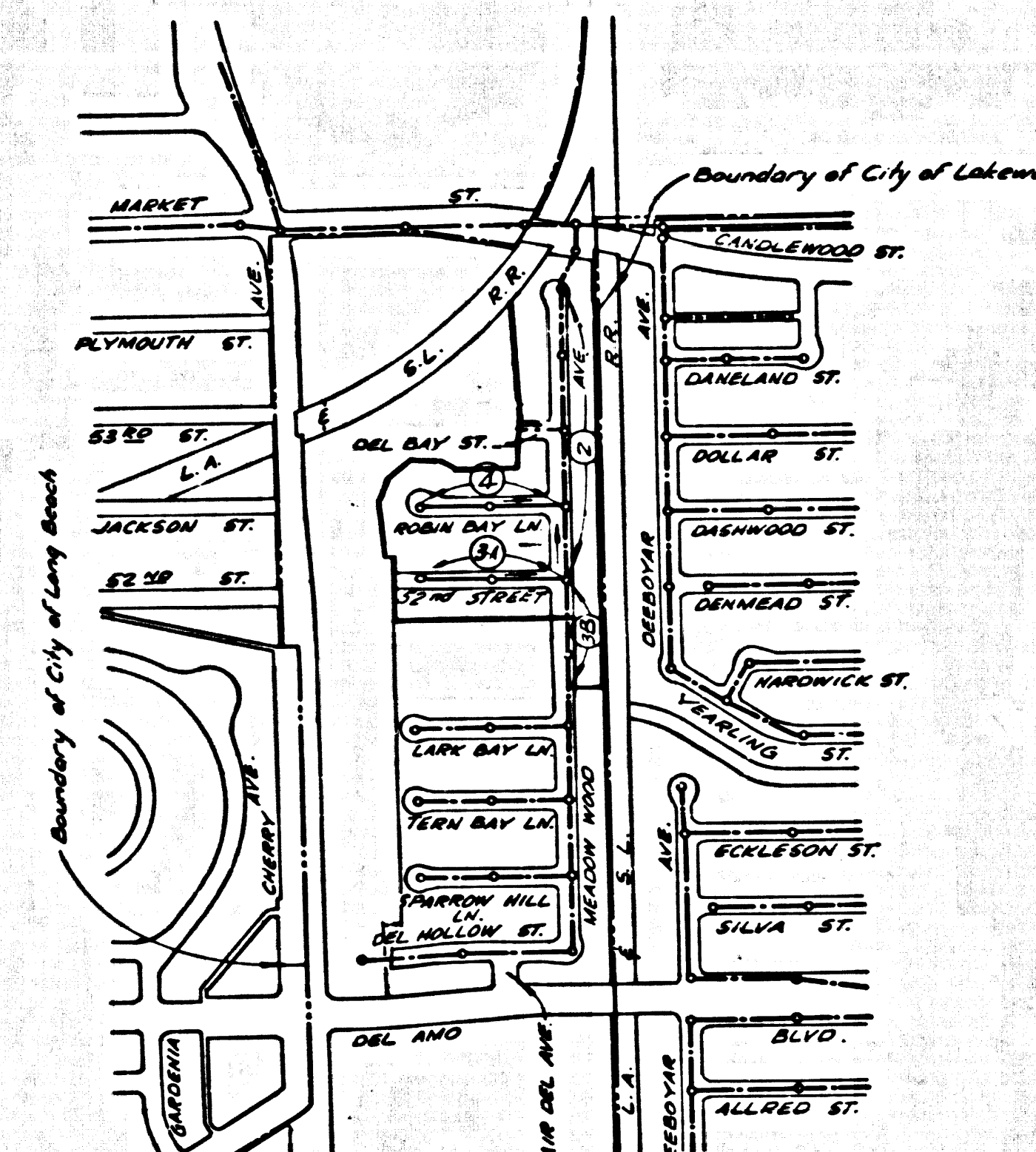


B.M. BY 7101 ELEV. 48.659
 L.E.T. E. curb of S.E. corner
 Paramount Blvd. & Connelwood St.
 66 ft. 11.5" & 40 ft. 11.5" of 8" int.
BASELINE QUAD. 19 65
 (BELLFLOWER QUAD.)



INDEX MAP
 SCALE 1:500
 RC. 8181

- THE FOLLOWING COUNTY ENGINEER STANDARD PLANS APPLY TO THIS PROJECT
- S-1 LEGEND
 - S-2 MINIMUM EXCAVATION SAFETY REQUIREMENTS
 - S-3 CHUCK MANHOLE
 - S-4 NON-REINFORCED PRECAST CONCRETE MANHOLE
 - S-5 REINFORCED PRECAST CONCRETE MANHOLE
 - S-6 MANHOLE FRAMES AND COVERS
 - S-7 STANCHION MANHOLES, ETC.
 - S-8 BEDDING FOR SEWER PIPES
 - S-9 CONDUITS AND ENCASEMENT
 - S-10 WYE SUPPORT
 - S-11 STOPPING
 - S-12 ALLOWABLE TRENCH WIDTHS

REVISION NO. 1
 1. Relocated Mainline Sewer in 52nd Street between Sts. 0150 and 0170.
 Approved: *Richard Stokes*
 Chief Engineer

County Sanitation Districts shall be notified prior to the following that required inspection can be made:
 (Phone 699-2668 - 4 636-3077)

Acceptance of the project.

No connections for the disposal of industrial wastes shall be made to sewers shown on these drawings without written permission from the Chief Engineer and General Manager of the County Sanitation Districts.

Allow no connections until 8053 has been accepted for Public Use by the Construction Division of the County Engineer.

LAKEWOOD BLDG. DIST. NO. 4.01

- NOTES:
1. PROVIDE STAKES ON THE PROPERTY LINE OR PROPERTY LINES PRODUCED AT RIGHT ANGLES TO THE SEWER LINE AT THE CENTER LINE OF EACH MANHOLE.
 2. NO REPRESENTATIVE OF THE CITY ENGINEER WILL SURVEY OR LAY OUT ANY PORTION OF THE WORK.
 3. THE PRIVATE ENGINEER SHALL FURNISH THE CITY ENGINEER WITH GRADE SHEETS AND STATIONING FOR ALL HOUSE LATERALS AND 7" TO 12" BRANCHES AND SHALL PROVIDE STAKES FOR THEM AT THEIR PROPOSED LOCATIONS WITH STATIONING PLAINLY MARKED. ALL HOUSE LATERALS SHALL BE CONSTRUCTED IN A STRAIGHT ALIGNMENT AT RIGHT ANGLES FROM THE MAIN LINE SEWER EXCEPT AS SHOWN ON THE PLANS. HOUSE LATERALS FROM CHIMNEYS SHALL NOT HAVE AN ANGLE OF LESS THAN 45° WITH THE MAIN LINE SEWER. ANY CHANGE IN ALIGNMENT SHALL BE REQUESTED BY WRITING BY THE PRIVATE ENGINEER.
 4. THE PRIVATE ENGINEER SHALL FURNISH THE HOUSE LATERAL DEPTH AT THE PROPERTY LINE BELOW THE TOP OF CURB ELEVATION FOR EACH HOUSE LATERAL ON THE GRADE SHEET.
 5. NO REVISIONS SHALL BE MADE IN THESE PLANS WITHOUT THE APPROVAL OF THE CITY ENGINEER.
 6. THE CONTRACTOR SHALL NOTIFY THE CONSTRUCTION DIVISION BY TELEPHONE, MADISON 9-4749, EXT. 81581, AT LEAST TWENTY-FOUR HOURS BEFORE STATING ANY WORK UNDER THIS CONTRACT.
 7. MANHOLES SHALL BE BRICK SEWER STRUCTURES PER S.S.P. CHAPTER 10, DIVISION 10.01, PER STANDARD SPECIFICATIONS FOR PUBLIC WORKS, SECTION 10.01.01.
 8. USE STANDARD MANHOLE FRAMES AND COVERS, S-16.
 9. MANHOLE TOPS IN UNIMPROVED RIGHTS-OF-WAY TO BE 22 INCHES ABOVE FINISHED GRADE.
 10. EXTRA STRENGTH PIPE, ALL PIPE IS STANDARD UNLESS NOTED OTHERWISE.
 11. VITRIFIED CLAY PIPE JOINTS SHALL BE "W" JOINTS PER STD. SPEC. SEC. 208-2.
 12. IF A POWER POLE IS WITHIN THREE FEET OF THE SEWER, THE SEWER SHALL BE ENCASED PER S-23, TWO FEET ON EACH SIDE FROM THE POINT OF INTERFERENCE.
 13. IF DURING THE COURSE OF CONSTRUCTION IT IS DETERMINED THAT THERE IS LESS THAN FOUR FEET OF COVER OVER THE TOP OF A MAIN LINE OR HOUSE LATERAL V.C.P. SEWER WHICH IS NOT INDICATED ON THE PLANS, THE PIPE SHALL BE ENCASED PER S-23, UNLESS OTHERWISE APPROVED BY THE CITY ENGINEER.
 14. HOUSE LATERALS TO BE CONSTRUCTED WITH INVERTS AT PROPERTY LINE 6 FEET BELOW CURB GRADE EXCEPT AS NOTED.
 15. RESURFACE ALL TRENCHES WITHIN PAVED AREAS TO MEET L.A. COUNTY ROAD DEPT. OR CALIFORNIA STATE HIGHWAY REQUIREMENTS IN ACCORDANCE WITH PERMITS.
 16. SEWERS TO BE TESTED FOR LEAKAGE PER SECTION 206-2, 2, 3, 7 STANDARD SPECIFICATIONS.
 17. ALL STATE AND LOCAL TRENCH SAFETY ORDERS WILL BE STRICTLY ENFORCED.
 18. SPECIAL BACKFILLS IN DESIGNATED AREAS:
 (a) BACKFILL TRENCHES AND REPLACE OTHER EXISTING SOILS TO ACHIEVE THE NATURAL OR FINISHED GRADES AND SLOPES SHOWN ON THE GRADING PLAN APPROVED FOR THIS TRACT BY THE BUILDING AND SAFETY DIVISION.
 (b) ALL BACKFILL AND EXISTING SOILS SHALL BE COMPACTED TO A MINIMUM OF 90% MAXIMUM DENSITY PER A S.T.M. STANDARD METHOD OF TEST D AND SET AS INDICATED. ACCEPTABLE CERTIFICATION OF SUCH COMPACTION SHALL BE SUBMITTED TO THE CONSTRUCTION DIVISION.
 19. ALL JOINTS BETWEEN CAST IRON PIPE AND VITRIFIED CLAY PIPE SHALL BE MADE WITH A RUBBER SLEEVE JOINT, TYPE "C" OR "D" (WITH BUSHING IF NECESSARY) PER STANDARD SPECIFICATIONS SECTION 208-2.

NOTICE TO CONTRACTOR
 The existence and location of any underground utility lines or structures shown on these plans are obtained by a search of the available records. To the best of my knowledge there are no other utilities except as shown on these plans. The contractor is required to take due precautionary measures to protect the utility lines shown and any other lines not of record or not shown on these plans.
Richard Stokes
 R.C.E. 1899B

COLLECT CHARGES AS INDICATED

PROFILE, ALIGNMENT AND GRADE OF **P.C. 8181**
SANITARY SEWERS PAGE 1
 TO BE CONSTRUCTED IN
TRACT NO. 29995

PRIVATE CONTRACT NO. 8181

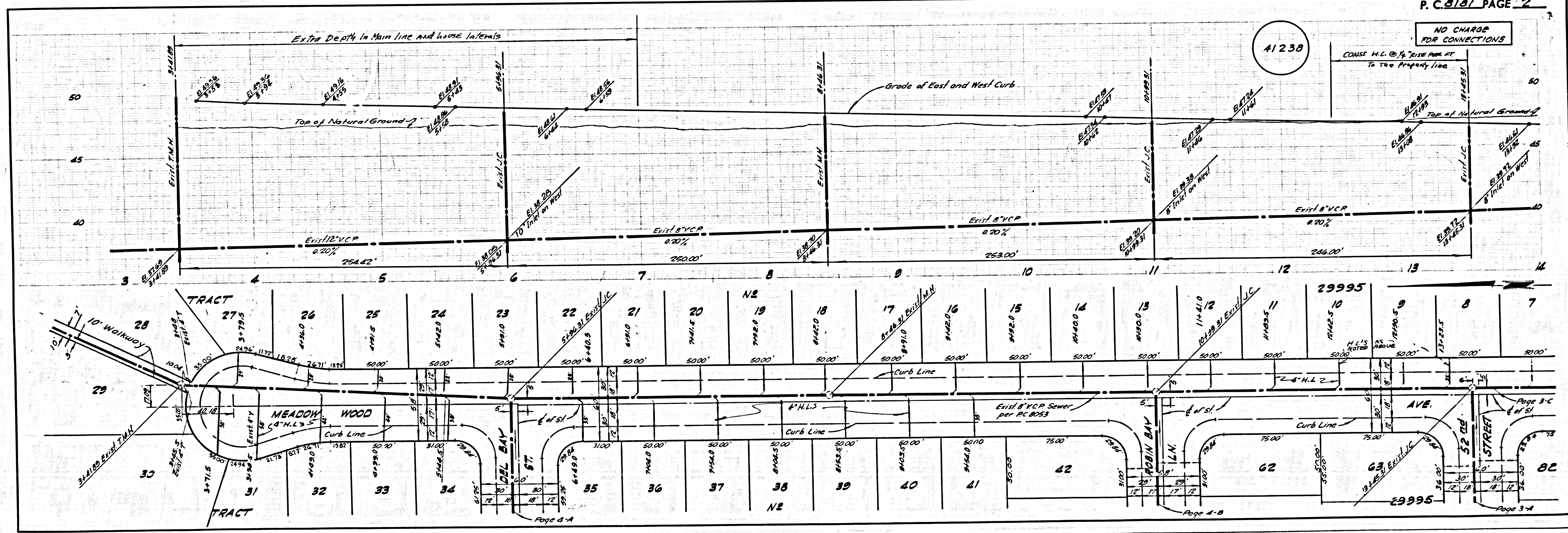
W.S. 30 41237
 2 SHEETS, 4 PAGES
 SCALE: VERT. 1" = 4' HORIZ. 1" = 40'
 September 1968
 PREPARED IN THE OFFICES OF
HARDWICK ENGINEERING CO.
 By *Thomas C. Hardwick*
 REG. C. E. NO. 13998

FOR LEGEND SEE PLAN NO. S-1

NOTES TO WHICH THIS IMPROVEMENT IS TO BE CONSTRUCTED ARE SHOWN ON PLANS AND PROFILES. GRADE POINTS FOR TOP OF CURB, CENTER LINE OF STREETS, OR CENTER LINE OF ALLEYS ARE SHOWN BY CIRCLES ON PROFILES. AT ALL POINTS BETWEEN DESIGNATED POINTS THE GRADE SHALL BE ESTABLISHED AS TO CONFORM TO A STRAIGHT LINE DRAWN BETWEEN SAID DESIGNATED POINTS. ELEVATIONS ARE IN FEET ABOVE U.S.C. & G.S. MEAN DATUM OF 1929.
 WORK SHALL BE CONSTRUCTED ACCORDING TO STANDARD SPECIFICATIONS FOR PUBLIC WORKS, CITY ENGINEER'S SPECIAL PERMITS AND SHALL BE PROTECTED ONLY IN THE PRESENCE OF THE CITY ENGINEER. PROVISIONS DATED JAN. 2, 1963. BEFORE WORK CAN BE STARTED, THE CONTRACTOR MUST OBTAIN A PERMIT TO EXCAVATE IN THE CITY STREETS FROM THE L.A. COUNTY SOILS AND WATER DIVISION, DISTRICT NO. 2, AND MAKE A DEPOSIT WITH THE CITY OF LAKEWOOD TO COVER THE COST OF CONSTRUCTION INSPECTION AND RECORD PLANS.
 APPROVAL OF THIS PLAN BY THE CITY OF LAKEWOOD DOES NOT CONSTITUTE A REPRESENTATION AS TO THE ACCURACY OF THE LOCATION OF OR THE EXISTENCE OR NON-EXISTENCE OF ANY UNDERGROUND UTILITY PIPES OR STRUCTURES WITHIN THE LIMITS OF THIS PROJECT. THIS NOTE APPLIES TO ALL PAGES.
 PERMITS TO BE OBTAINED FROM THE STATE HIGHWAY DEPARTMENT MUST BE OBTAINED FROM THE STATE OF CALIFORNIA, DIVISION OF HIGHWAYS, 126 SOUTH BRIDGE STREET, LOS ANGELES, CALIFORNIA.

CITY OF LAKEWOOD, CALIFORNIA
 JOHN A. LAMBIE, CITY ENGINEER J. D. PARKHURST, CHIEF ENGINEER
 APPROVED BY: *Richard Stokes* REGIONAL ENGINEER, DATE 7-27-68 APPROVED BY: *J. D. Parkhurst* OFFICE ENGINEER

CHECKED BY: *Quill E. McCall*
 REG. C.E. NO. 5731 DATE 7/23/69



P.C. 8181 PAGE 2
 NO CHARGE FOR CONNECTIONS
 41238
 CONST. H.L. @ 1/4" PER FT. TO THE PROPERTY LINE

