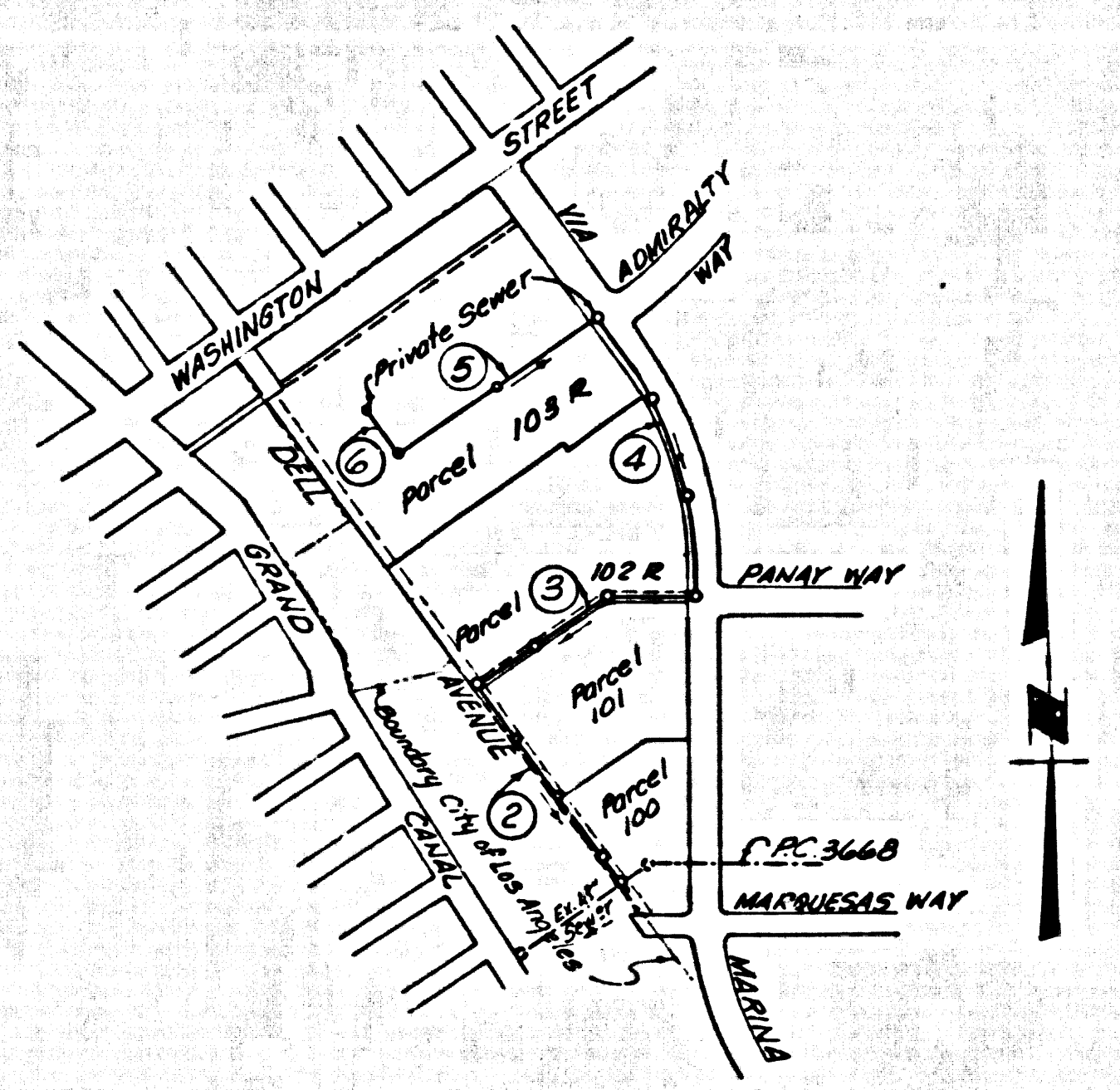


B.M. "O" ELEV. 20.658 MLLW
 VIA MARINA & ADMIRALTY WAY 80'S & 6' W. & INT. (CONST. &) TOP
 NAVY VENT. FD. CONC. WALL 57' 07" PER L.A.C. RD. DEPT. L.B. 1014
 PAGE 4

The following latest revised Standard Plans on file in the office of County Engineer shall apply in the construction of this project:

Legend	5-1
Minimum Public Safety Requirements	5-2
Brick Manhole	5-3
Non-reinforced Precast Concrete Manhole	5-5
Reinforced Precast Concrete Manhole	5-6
Manhole Frame and Cover	5-15
Standard Manhole Steps	5-17
Bedding for Sewer Pipe	5-21
Cooling and Encasement	5-23
Wye or Tee Support	5-24
Allowable Trench Widths	5-33



INDEX MAP
 Scale: 1" = 600'
 P.C. 8183

REVISION NO. 3 - March 27, 1969
 Revised grade of sewer bet. Sta. 0+00 and Sta. 7+09 on Page 2 and bet. Sta. 0+01 and Sta. 2+25 on Page 3 due to interference with water line on Page 5.
 APPROVED: *Thomas J. Valerich* 10653
 Office of County Engineer R.C.E. No.

REVISION NO. 2 - MARCH 12, 1969
 Revised alignment of Sewer on Page 2 between Sta. 0+00.00 and Sta. 7+09.05 due to interference with gas line.
 APPROVED: *Thomas J. Valerich* 10653
 Office of County Engineer R.C.E. No.

REVISION NO. 1 - Feb. 19, 1969
 Revised grade of Private Sewer between Sta. 0+00 and Sta. 6+81 on Page 5 and between Sta. 0+00 and Sta. 1+50 on Page 6.
 APPROVED: *Thomas J. Valerich* 10653
 Office of County Engineer R.C.E. No.

**DOUBLE SCALE
 LENNOX BLDG. DIST. NO. 7**

PROFILE ALIGNMENT AND GRADE OF **P.C. 8183**
SANITARY SEWERS PAGE 1
 TO BE CONSTRUCTED IN
PARCELS NO. 23S, 24, and 101
MARINA DEL REY
PRIVATE CONTRACT NO. 8183

W.S. 23
 3 SHEETS; 6 PAGES

SCALE: VERT. 1" = 4' HORIZ. 1" = 40' October 25, 1968

PREPARED IN THE OFFICES OF
JENNINGS ENGINEERING COMPANY
 4419 VAN NUYS BOULEVARD, SUITE 200
 SHERMAN OAKS, CALIFORNIA 91403

41226

By: *R. J. Jennings* REG. C. E. NO. 7853

FOR LEGEND SEE PLAN NO. S-1

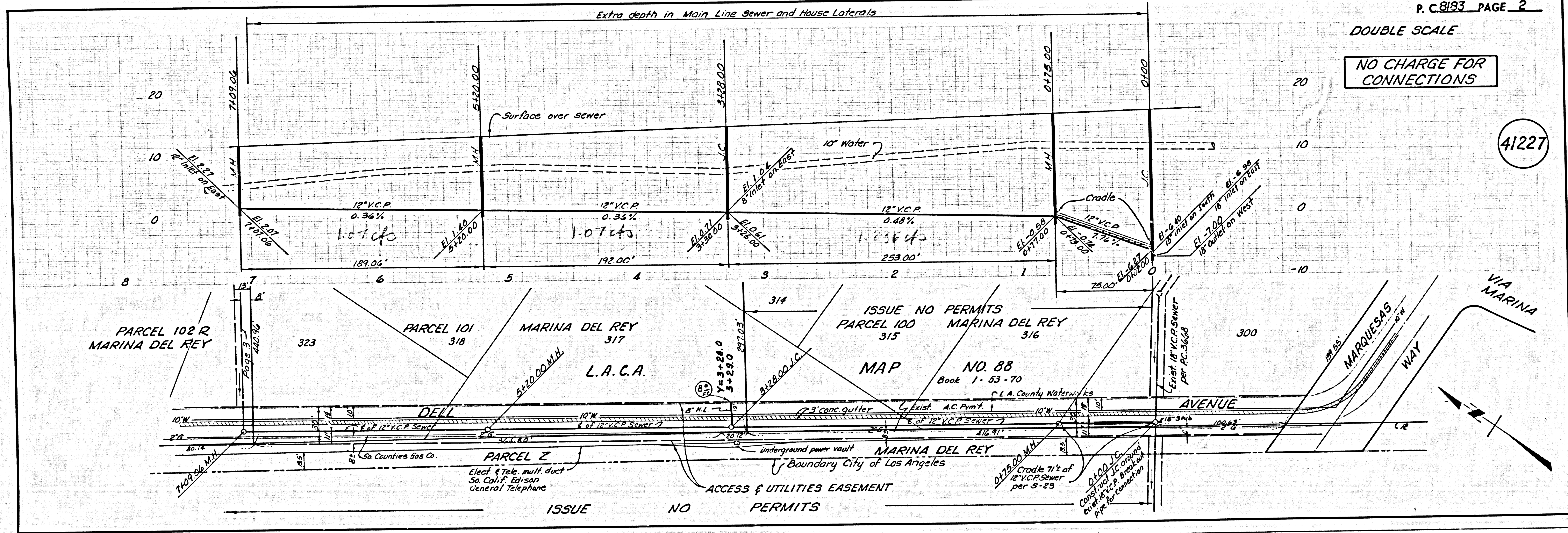
- NOTES:
- PROVIDE STAKES ON THE PROPERTY LINE OR PROPERTY LINES PRODUCED AT RIGHT ANGLES TO THE SEWER LINE AT THE CENTER LINE OF EACH MANHOLE.
 - NO REPRESENTATIVE OF THE COUNTY ENGINEER WILL SURVEY OR LAY OUT ANY PORTION OF THE WORK.
 - THE PRIVATE ENGINEER SHALL FURNISH THE COUNTY ENGINEER WITH GRADE SHEETS AND STATIONING FOR ALL HOUSE LATERALS AND "T" OR "Y" BRANCHES. ALL PRIVATE STAKES FOR THEM AT THEIR PROPER LOCATIONS WITH STATIONING PLAINLY MARKED. ALL HOUSE LATERALS SHALL BE CONSTRUCTED IN A STRAIGHT ALIGNMENT AT RIGHT ANGLES FROM THE MAIN LINE SEWER EXCEPT AS SHOWN ON THE PLANS. HOUSE LATERALS FROM CHIMNEYS SHALL NOT HAVE AN ANGLE OF LESS THAN 45° WITH THE MAIN LINE SEWER. ANY CHANGE IN ALIGNMENT SHALL BE REQUESTED IN WRITING BY THE PRIVATE ENGINEER.
 - THE PRIVATE ENGINEER SHALL FURNISH THE HOUSE LATERAL DEPTH AT THE PROPERTY LINE BELOW THE TOP OF CURB ELEVATION FOR EACH HOUSE LATERAL ON THE GRADE SHEET.
 - NO REVISIONS SHALL BE MADE IN THESE PLANS WITHOUT THE APPROVAL OF THE COUNTY ENGINEER.
 - THE CONTRACTOR SHALL NOTIFY THE CONSTRUCTION DIVISION BY TELEPHONE, HADISON 9-47, EXT. 8153, AT LEAST TWENTY-FOUR HOURS BEFORE STARTING ANY WORK UNDER THIS CONTRACT.
 - ALL STRUCTURES SHALL BE EITHER BRICK MANHOLES PER S-3 OR PRECAST CONCRETE MANHOLES PER S-5 OR S-6, EXCEPT AS NOTED.
 - "T" OR "Y" BRANCHES MAY BE USED FOR CONNECTIONS TO MAINLINE SEWERS EXCEPT AS NOTED.
 - MANHOLE TOPS IN UNIMPROVED RIGHTS-OF-WAY TO BE SIX INCHES ABOVE FINISHED GRADE.
 - USE EXTRA STRENGTH PIPE, ALL PIPE IS STANDARD DEPTH EXCEPT AS NOTED.
 - VITRIFIED CLAY PIPE JOINTS SHALL BE TYPE "C", "F", OR "G" PER STANDARD SPECIFICATIONS SECTION 208-2.
 - IF A POWER POLE IS WITHIN THREE FEET OF THE SEWER, THE SEWER SHALL BE ENCASED PER S-23, TWO FEET ON EACH SIDE FROM THE POINT OF INTERFERENCE.
 - IF DURING THE COURSE OF CONSTRUCTION IT IS DETERMINED THAT THERE IS LESS THAN FOUR FEET OF COVER OVER THE TOP OF A MAIN LINE OR HOUSE LATERAL V.C.P. SEWER WHICH IS NOT INDICATED ON THE PLANS, THE PIPE SHALL BE ENCASED PER S-23, UNLESS OTHERWISE APPROVED BY THE COUNTY ENGINEER.
 - MANHOLE LATERALS TO BE CONSTRUCTED WITH INVERTS AS SHOWN AND 6 FEET BELOW CURB GRADE EXCEPT AS NOTED.
 - RESURFACE ALL TRENCHES WITHIN PAVED AREAS TO MEET L.A. COUNTY ROAD DEPT. OR CALIFORNIA STATE HIGHWAY REQUIREMENTS IN ACCORDANCE WITH PERMITS.
 - SEWERS TO BE TESTED FOR LEAKAGE PER SECTION 204-2.3.7 OF THE STANDARD SPECIFICATIONS.
 - REFER TO SECTION 7-10.4.1 OF THE STANDARD SPECIFICATIONS, REGARDING SAFETY ORDERS.
 - SPECIAL BACKFILL IN DESIGNATED AREAS:

**COLLECT CHARGES
 AS INDICATED**

NOTE:
 GRADES TO WHICH THIS IMPROVEMENT IS TO BE CONSTRUCTED ARE SHOWN ON PLANS AND PROFILES. GRADE POINTS FOR TOP OF CURB, CENTER LINE OF STREETS OR CENTER LINE OF ALLEYS ARE SHOWN BY CIRCLES ON PROFILES AT ALL POINTS BETWEEN DESIGNATED POINTS. ELEVATIONS ARE IN FEET ABOVE U.S.C. & G.S. SEA LEVEL UNLESS OTHERWISE NOTED. THIS DRAWING AND THE DATA HEREON ARE HEREBY MADE A PART OF THE SPECIFICATIONS. WORK SHALL BE CONSTRUCTED ACCORDING TO THE STANDARD SPECIFICATIONS FOR PUBLIC WORKS CONSTRUCTION AND SPECIAL PROVISIONS FOR THE CONSTRUCTION OF SANITARY SEWERS, DATE FEB. 15, 1968, AS REVISED, AND SHALL BE PROSECUTED CITY OR COUNTY OF LOS ANGELES. THE CONTRACTOR MUST OBTAIN A PERMIT TO EXCAVATE IN COUNTY STREETS FROM THE L.A. COUNTY ROAD DEPT., DISTRICT OFFICE NO. 10, AND PAY A FEE TO THE COUNTY ENGINEER, ROOM 100, COUNTY ENGINEERING BUILDING, 100 WEST SECOND STREET, LOS ANGELES, CALIFORNIA 90012. SUFFICIENT TO COVER THE COST OF CONSTRUCTION INSPECTION AND COUNTY OF LOS ANGELES DOES NOT CONSTITUTE A REPRESENTATION AS TO THE ACCURACY OF THE APPROVAL OF THIS PLAN BY THE COUNTY ENGINEER. THE CONTRACTOR SHALL BE RESPONSIBLE FOR THE LOCATION OF OR THE EXISTENCE OR NON-EXISTENCE OF ANY UNRECORDED UTILITY PIPE, OR STRUCTURE WITHIN THE LIMITS OF THE PROJECT. THIS NOTE APPLIES TO ALL PAGES.
 IF WORK IS TO BE DONE IN A STATE HIGHWAY, A PERMIT MUST BE OBTAINED FROM THE STATE OF CALIFORNIA, DIVISION OF HIGHWAYS, 120 SOUTH BRINK STREET, LOS ANGELES, CALIFORNIA.

COUNTY OF LOS ANGELES, CALIFORNIA
 JOHN A. LAMBIE, COUNTY ENGINEER
 APPROVED BY: *John A. Lambie* 1-8-69 ASSISTANT SANITATION ENGINEER
 REVIEWED BY: *Arthur G. Will* DISTRICT SANITATION ENGINEER
 CHECKED BY: *Robert J. P. 69* REG. C.E. NO. 14370

J. N. 0369.42

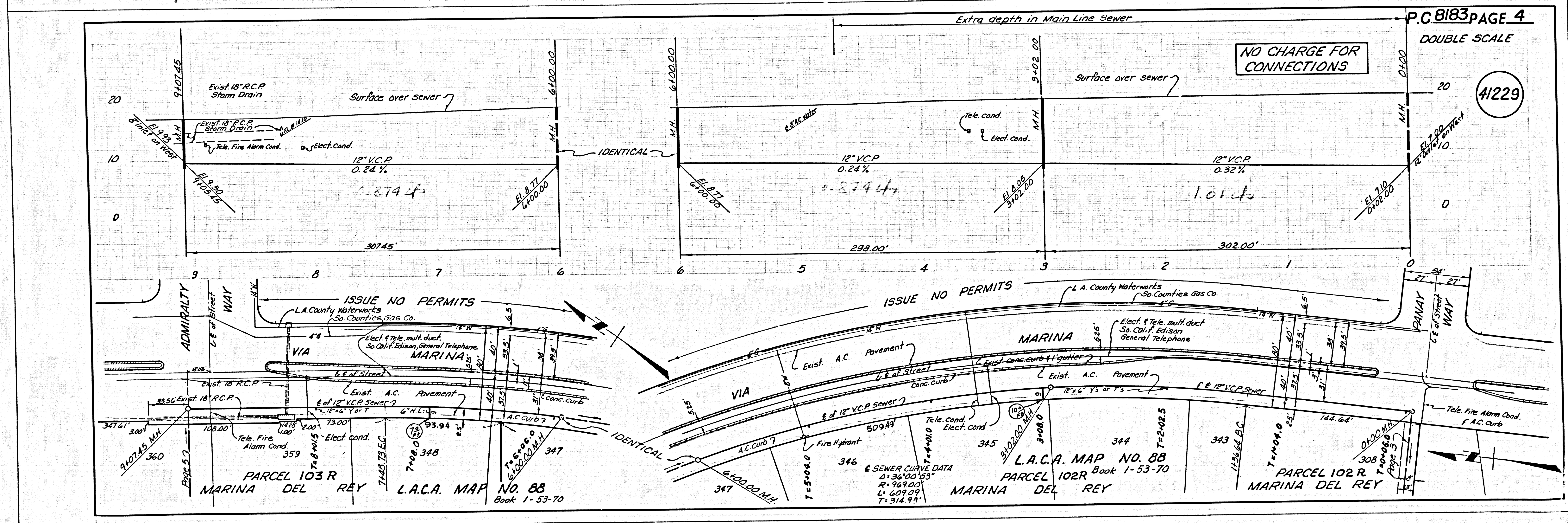
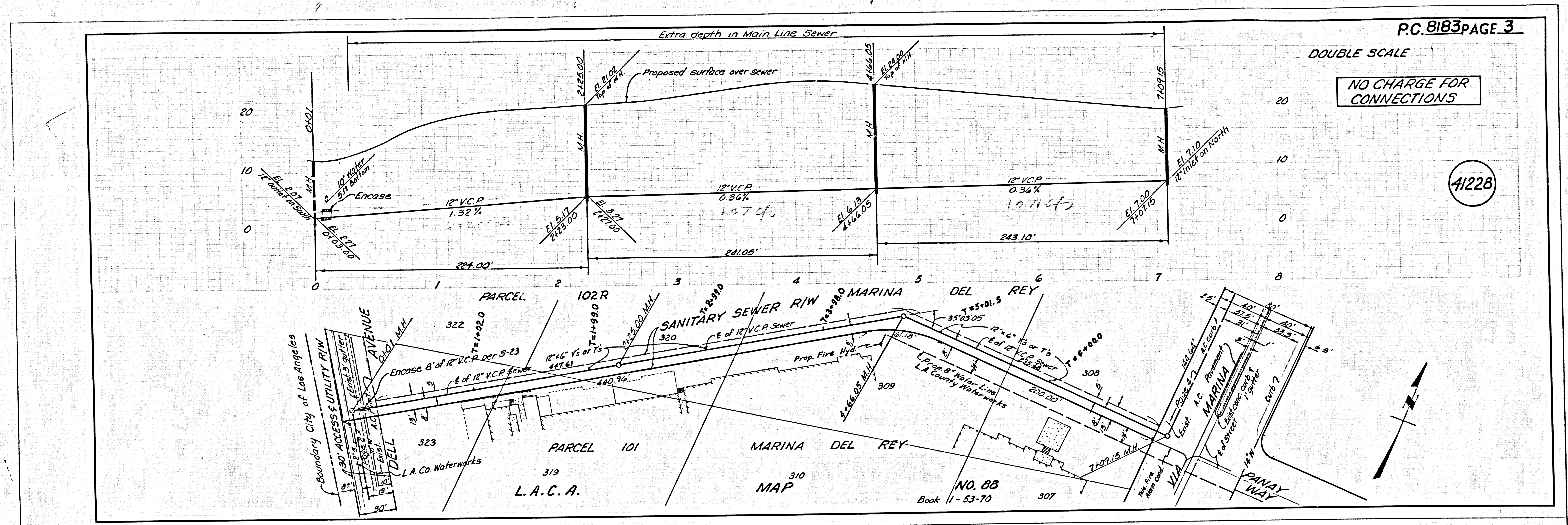


P.C. 8183 PAGE 2

DOUBLE SCALE

NO CHARGE FOR CONNECTIONS

41227



K-E INTERNATIONAL L.A. COUNTY SEWER SHEET NO. 2 S.D. CAL. BLUEPRINT CO.

