

PC 8184

B.M. BL 2658 ELEV. 2685.419
St. Hwy Mon. in well 12" in. dia.
at int. Division St and Palmdale Blvd.
Palmdale QUAD. 19 65

PALMDALE BLDG. DIST. NO. 801

PROFILE ALIGNMENT AND GRADE OF
SANITARY SEWERS
TO BE CONSTRUCTED IN

FIRST STREET WEST
PRIVATE CONTRACT NO. 8184

W.S. 65
1 SHEETS; 2 PAGES

SCALE: VERT. 1" = 4'
HORIZ. 1" = 40'

OCTOBER, 1968

PREPARED IN THE OFFICES OF

MOLINA engineering consultants, inc.

REG. C. E. NO. 18004

FOR LEGEND SEE PLAN NO. S-1

P.C. 8184
PAGE 1

40711

- NOTES:
1. PROVIDE STAKES ON THE PROPERTY LINE OR PROPERTY LINES PRODUCED AT RIGHT ANGLES TO THE SEWER LINE AT THE CENTER LINE OF EACH MANHOLE.
 2. NO REPRESENTATIVE OF THE COUNTY ENGINEER WILL SURVEY OR LAY OUT ANY PORTION OF THE WORK.
 3. THE PRIVATE ENGINEER SHALL FURNISH THE COUNTY ENGINEER WITH GRADE SHEETS AND STATIONING FOR ALL HOUSE LATERALS AND ALL HOUSE LATERALS SHALL BE CONSTRUCTED IN A STRAIGHT ALIGNMENT AT RIGHT ANGLES FROM THE MAIN LINE SEWER EXCEPT AS SHOWN ON THE PLANS. HOUSE LATERALS FROM CHIMNEYS SHALL NOT HAVE AN ANGLE OF LESS THAN 45° WITH THE MAIN LINE SEWER. ANY CHANGE IN ALIGNMENT SHALL BE REQUESTED IN WRITING BY THE PRIVATE ENGINEER.
 4. THE PRIVATE ENGINEER SHALL FURNISH THE HOUSE LATERAL DEPTH AT THE PROPERTY LINE BELOW THE CURB ELEVATION FOR EACH HOUSE LATERAL ON THE GRADE SHEET.
 5. NO REVISIONS SHALL BE MADE IN THESE PLANS WITHOUT THE APPROVAL OF THE COUNTY ENGINEER.
 6. THE CONTRACTOR SHALL NOTIFY THE CONSTRUCTION DIVISION BY TELEPHONE, MADISON 8-4767, EXT. 81551, AT LEAST TWENTY-FOUR HOURS BEFORE STARTING ANY WORK UNDER THIS CONTRACT.
 7. ALL STRUCTURES SHALL BE EITHER BRICK MANHOLES PER S-3 OR PRECAST CONCRETE MANHOLES PER S-3 OR S-4, EXCEPT AS NOTED.
 8. USE STANDARD MANHOLE FRAMES AND COVERS, S-12, EXCEPT AS NOTED.
 9. MANHOLE TOPS IN UNIMPROVED RIGHTS-OF-WAY TO BE SIX INCHES ABOVE FINISHED GRADE.
 10. USE EXTRA STRENGTH PIPE, ALL PIPE IS STANDARD DEPTH EXCEPT AS NOTED.
 11. VITRIFIED CLAY PIPE JOINTS SHALL BE TYPE "D", "F", OR "G" PER STANDARD SPECIFICATIONS, SECTION 206-2.
 12. IF A POWER POLE IS WITHIN THREE FEET OF THE SEWER, THE SEWER SHALL BE ENCASED, PER S-23, TWO FEET ON EACH SIDE FROM THE POINT OF INTERFERENCE.
 13. IF DURING THE COURSE OF CONSTRUCTION IT IS DETERMINED THAT THERE IS LESS THAN FOUR FEET OF COVER OVER THE TOP OF A MAIN LINE OR HOUSE LATERAL V.C.P. SEWER WHICH IS NOT INDICATED ON THE PLANS, THE PIPE SHALL BE ENCASED PER S-23, UNLESS OTHERWISE APPROVED BY THE COUNTY ENGINEER.
 14. HOUSE LATERALS TO BE CONSTRUCTED WITH INVERTS AT PROPERTY LINE & FEET BELOW CURB GRADE EXCEPT AS NOTED.
 15. RESURFACE ALL TRENCHES WITHIN PAVED AREAS TO MEET L.A. COUNTY ROAD DEPT. OR CALIFORNIA STATE HIGHWAY REQUIREMENTS IN ACCORDANCE WITH PERMITS.
 16. SEWERS TO BE TESTED FOR LEAKAGE PER SECTION 906-2.27 UNIFORM STANDARD SPECIFICATIONS.
 17. ALL STATE AND LOCAL TRENCH SAFETY ORDERS SHALL BE COMPLIED WITH PER STANDARD SPECIFICATIONS.
 18. SPECIAL SIGNALS IN DESIGNATED AREAS:
 - ALL BACKFILL AND EARTH REPLACEMENT SHALL BE COMPACTED TO A MINIMUM OF 90% OF STANDARD DENSITY PER A 6" X 24" SAND-CONE TEST PER STANDARD SPECIFICATIONS.
 - ALL SPECIAL SIGNALS IN DESIGNATED AREAS SHALL BE SUBMITTED TO THE CONSTRUCTION DIVISION.

THE FOLLOWING COUNTY ENGINEER STANDARDS APPLY TO THIS PROJECT

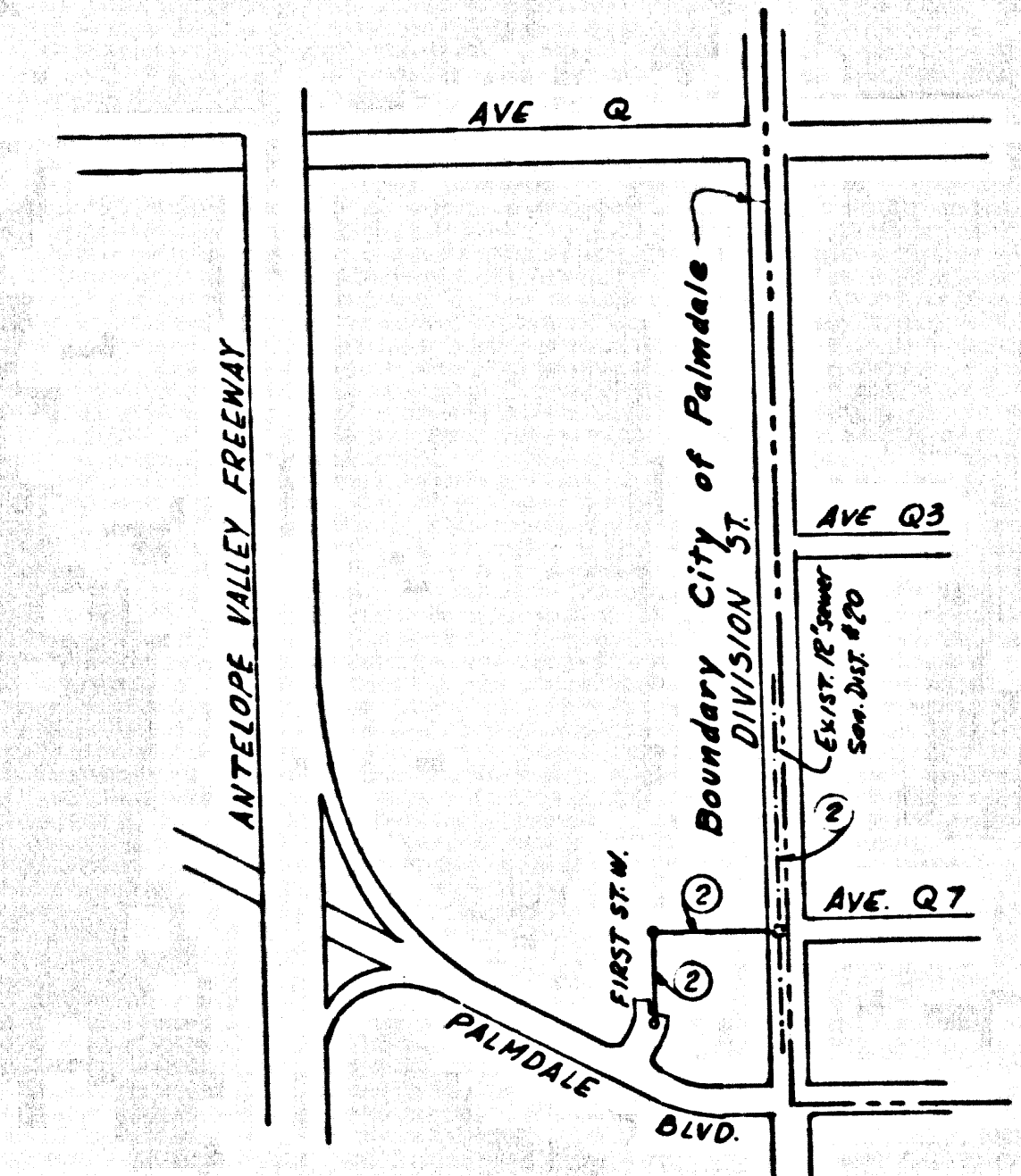
Minimum Excavation Safety Requirements	S-1
Brick Manhole	S-3
Non Reinforced Precast Concrete Manhole	S-3
Reinforced Precast Concrete Manhole	S-5
Manhole Frame and Cover	S-6
Manhole Sigs	S-7
bedding for Sewer Pipe	S-21
Condition and Encasement	S-23
Wye Support	S-24
Manhole Frame Night	S-25

COLLECT CHARGES AS INDICATED

County Sanitation Districts shall be notified prior to the following so that required inspection can be made (Phone 337-1212 - 496-0077)

advantage of the project.

No connections for the disposal of industrial wastes shall be made to sewers shown on these drawings without written permission from the Chief Engineer and General Manager of the County Sanitation Districts.



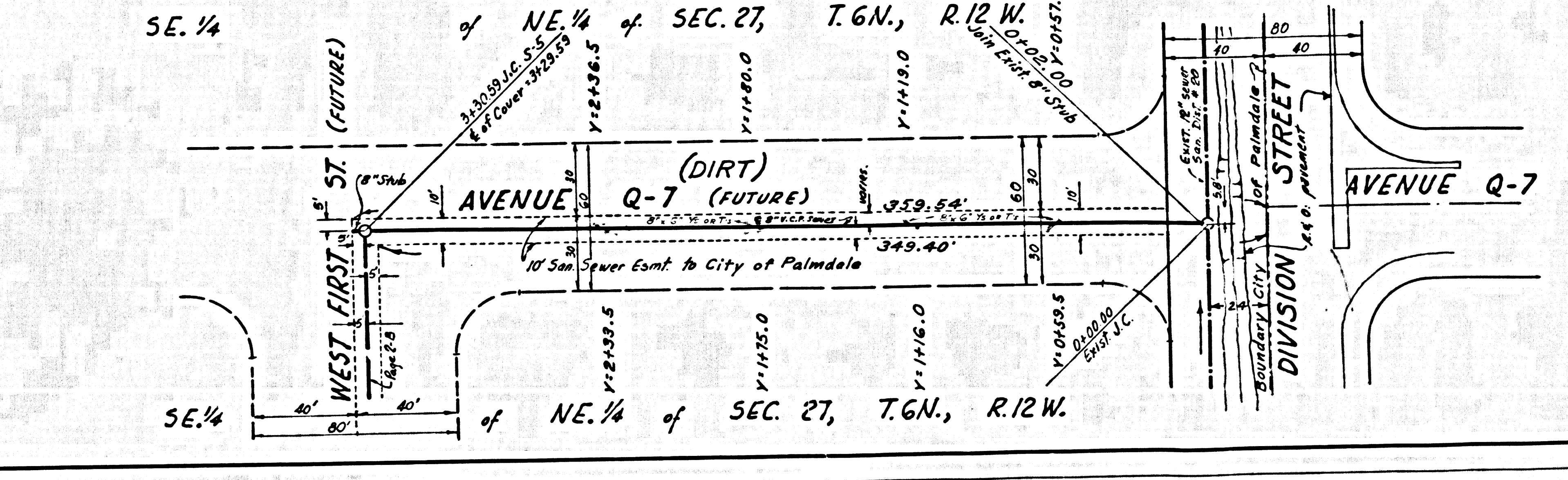
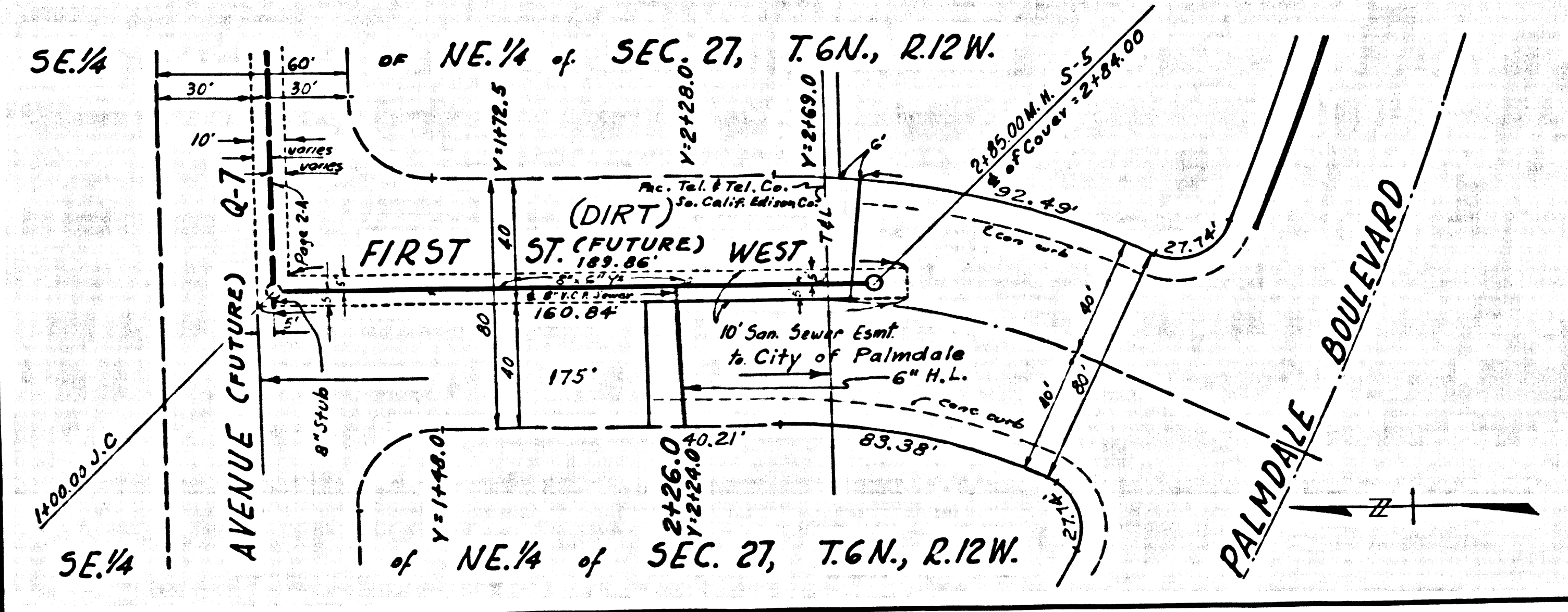
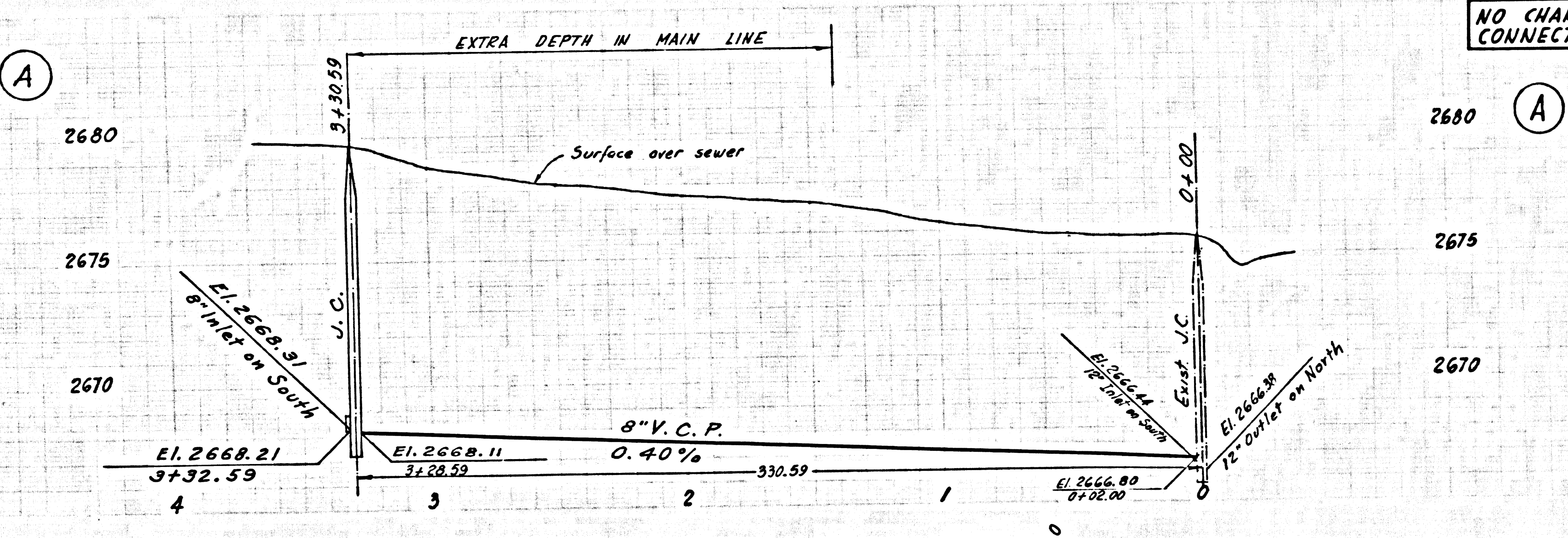
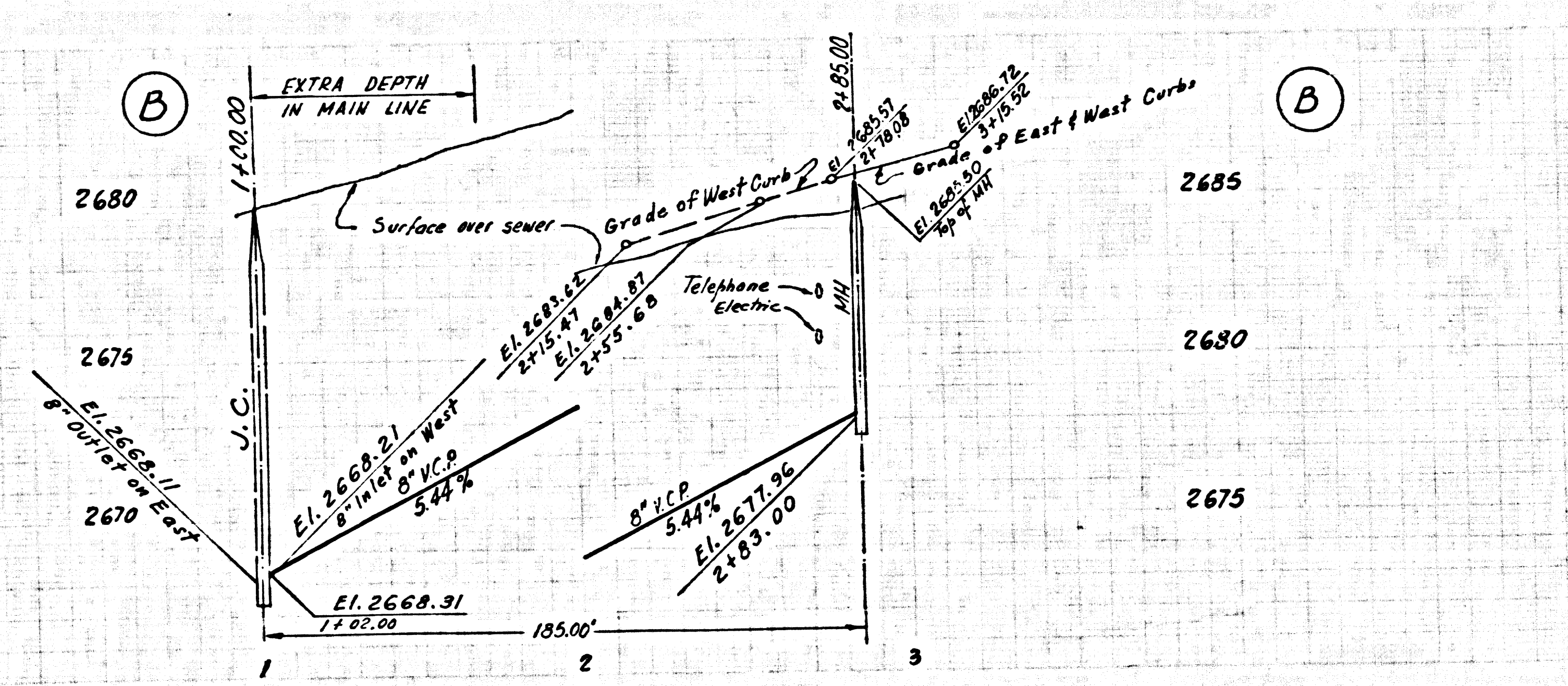
INDEX MAP
SCALE 1" = 600'
P.C. 8184

ISSUE NO PERMITS UNTIL EASEMENT IS DEDICATED TO THE CITY OF PALMDALE

NOTE:
GRADES TO WHICH THIS IMPROVEMENT IS TO BE CONSTRUCTED ARE SHOWN ON PLANS AND PROFILES. GRADE POINTS FOR TOP OF CURBS, CENTER LINE OF STREETS, OR CENTER LINE OF ALLEYS ARE SHOWN BY CIRCLES ON PROFILES AT ALL POINTS BETWEEN DESIGNATED POINTS. GRADE POINTS ARE ON FEET ABOVE U.S.C. & G.S. MEAN LEVEL DATUM OF 1929.
ELEVATIONS AND THE DATA HEREON ARE HEREBY MADE A PART OF THE SPECIFICATIONS.
THIS DRAWING IS CONSTRUCTED ACCORDING TO THE UNIFORM STANDARD SPECIFICATIONS FOR PUBLIC WORKS CONSTRUCTION AND WORK SHALL BE CONSTRUCTED ACCORDING TO THE UNIFORM STANDARD SPECIFICATIONS DATED JAN. 2, 1969, AS AMENDED AND SPECIAL PROVISIONS FOR THE CONSTRUCTION OF SANITARY SEWERS DATED JAN. 2, 1969, AS AMENDED. BEFORE WORK CAN BE STARTED, THE CONTRACTOR MUST OBTAIN A PERMIT TO EXCAVATE IN COUNTY STREETS FROM THE L.A. COUNTY ROAD DEPT. DISTRICT OFFICE NO. 10000, 10000, PALMDALE, CALIFORNIA. A PERMIT MUST BE OBTAINED FROM THE COUNTY ENGINEER, 10000, PALMDALE, CALIFORNIA, TO COVER THE COST OF CONSTRUCTION INSPECTION AND RECORD PLANS.
APPROVAL OF THIS PLAN BY THE COUNTY OF LOS ANGELES DOES NOT CONSTITUTE A REPRESENTATION AS TO THE ACCURACY OF THE LOCATION OF OR THE EXISTENCE OR NON-EXISTENCE OF ANY UNDERGROUND UTILITY PIPE, OR STRUCTURE WITHIN THE LIMITS OF THE PROJECT. THIS NOTE APPLIES TO ALL PAGES.
NO WORK IS TO BE DONE IN A STATE HIGHWAY, A PERMIT MUST BE OBTAINED FROM THE STATE OF CALIFORNIA, DIVISION OF HIGHWAYS, 120 SOUTH SPRING STREET, LOS ANGELES, CALIFORNIA.

CITY OF PALMDALE, CALIFORNIA
JOHN A. LAMBIE, CITY ENGINEER
I. D. PARKHURST, CHIEF ENGINEER
CO. SAN. DIST. NO. 20
APPROVED BY: [Signature] DEPUTY CITY ENGINEER
APPROVED BY: [Signature] OFFICE ENGINEER
CHECKED BY: [Signature] REG. C. E. NO. 16732

PC 8184



P.C. 8184 PAGE 2
NO CHARGE FOR CONNECTIONS

40712