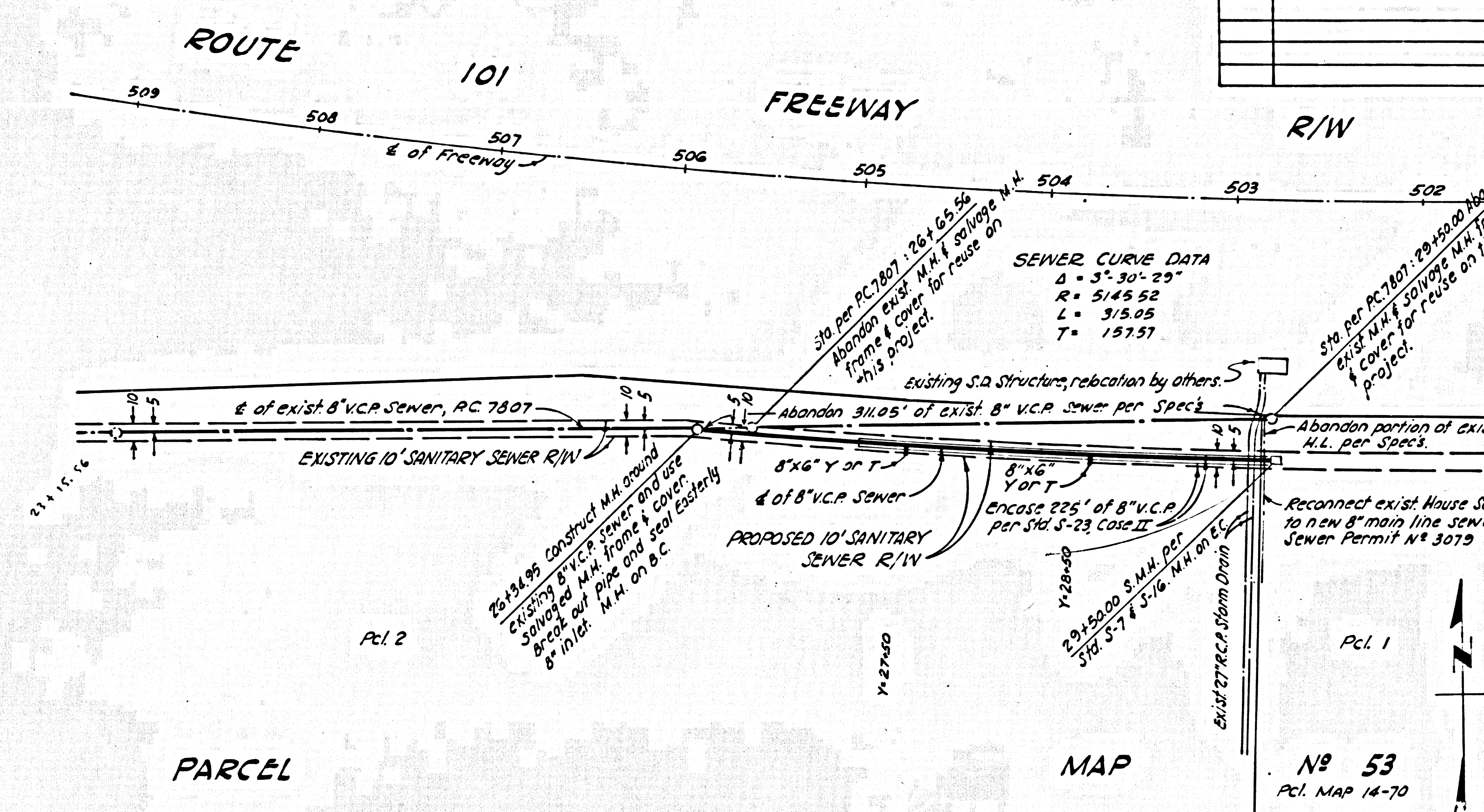
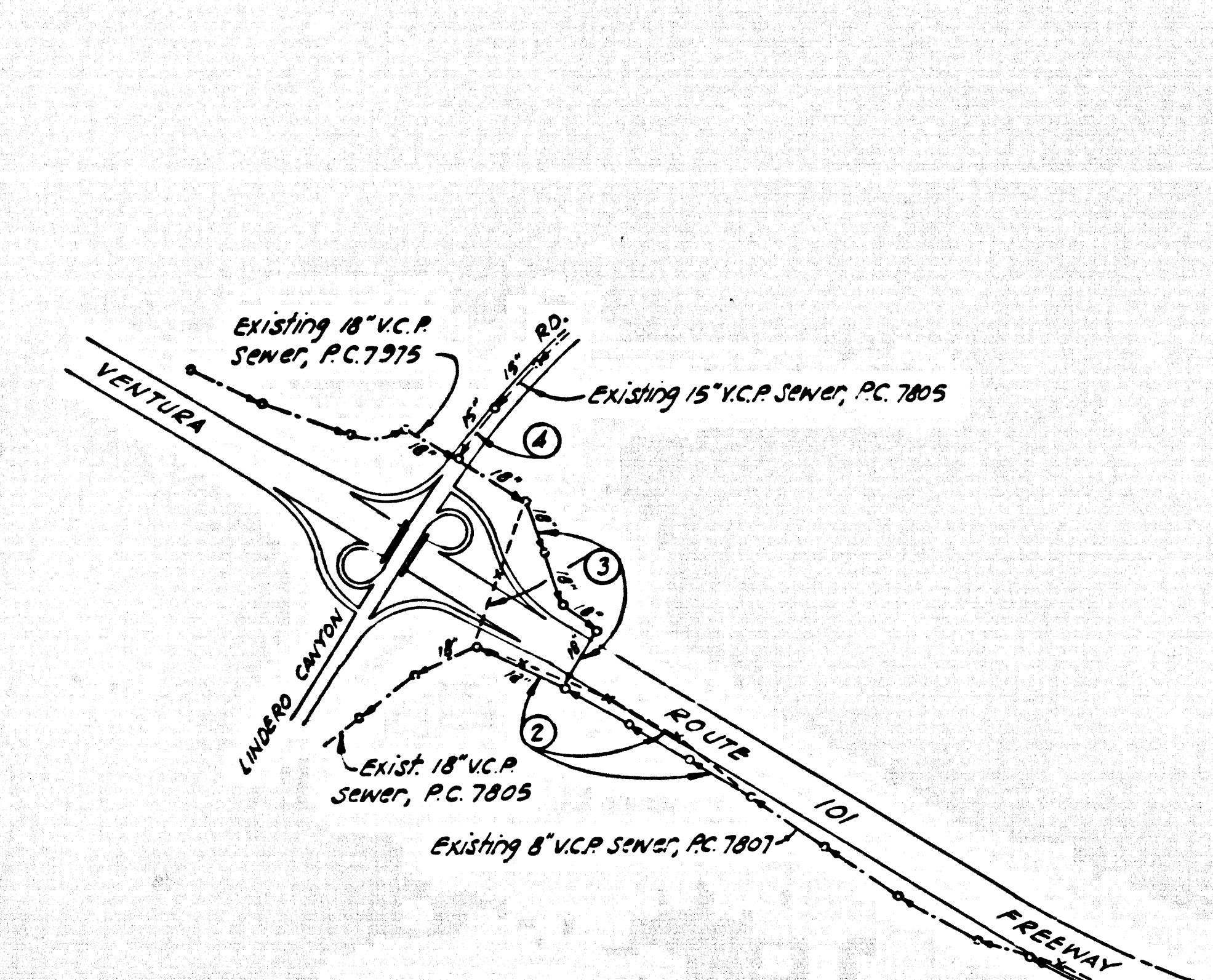


DATE	REVISION	BY	DIST	COUNTY	ROUTE	POST MILES	TOTAL PROJECT	SHEET NO.	TOTAL SHEETS
7-27-71	SEWER NOTES UPDATED	W.E.	07	LA/VEA	101	34.838	2.00/1.623		

James Michiel
DESIGN ENGINEER REGISTERED CIVIL ENGINEER
NO. 11013

DATE APPROVED _____

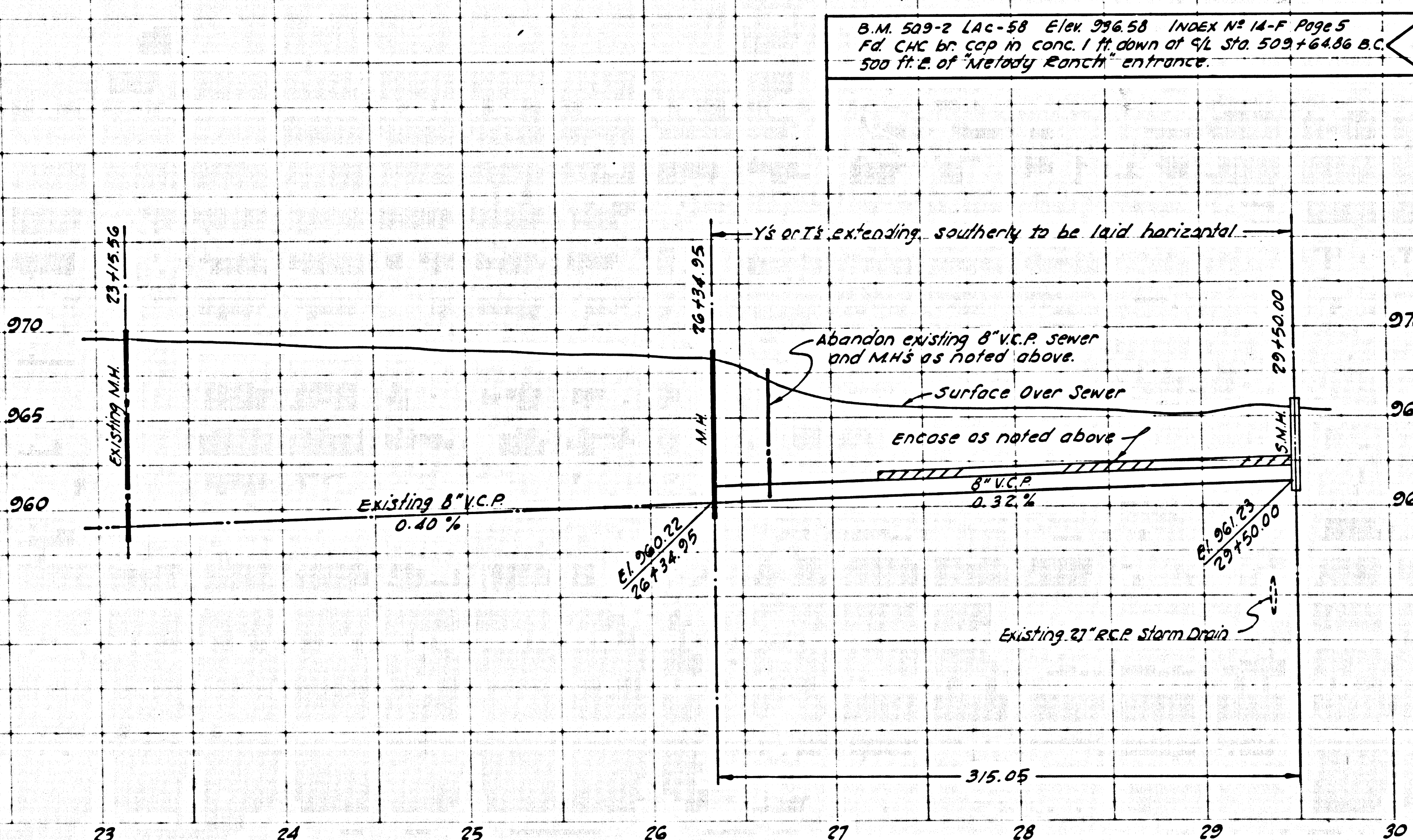


PLAN AND PROFILE OF
SANITARY SEWERS
TO BE CONSTRUCTED UNDER
C.C. 8190
SHEET 1 OF 4 SHEETS
MAY 1969
W.S. 93
SCALES: HORIZ. 1"=50' VERT. 1"=5'
COUNTY OF LOS ANGELES, CALIFORNIA
APPROVED JOHN A. LAMBIE, COUNTY ENGINEER
BY *Rudolph J. ...* 5-14-69
SUBMITTED BY *Rudolph J. ...* 5-12-69
LAS VIRGENES MUNICIPAL WATER DISTRICT
APPROVED BY *W. ...* 5-15-69

SEWER ESTIMATE C.C. 8190 (100551)

SHEET NO.	18" EXTRA STRENGTH V.C.P.				8" EXTRA STRENGTH V.C.P.				MANHOLES				M.H.F.C. NEW MISCL. TRANS. STEEL	BAR REINF. STEEL	
	L.F.	L.F.	C.Y.	C.Y.	EXCAVATION	STRUCTURE	BACKFILL	PIPE ENCASE. CLASS "A" CONC.	CONSTRUCT	RECONSTRUCT	ABANDON	ADJUST TO GRADE			LBS.
1	3/2							16	2		2				440
2	3/6	832							3		3				
3	906							76	3		1				365
4			108	102				6		2					
TOTAL	1,222	1,144	108	102	98	8	3	6	8**	1,025*	1,020				

* FINAL PAY ITEM
** MANHOLES NOT SHOWN ON SEWER PLANS
(See Plans of Canwood Street, Street Plans 2, 3 & 4)



- NOTES:
- NO REVISIONS SHALL BE MADE TO THESE SEWER PLANS WITHOUT THE APPROVAL OF THE COUNTY ENGINEER.
 - ALL STRUCTURES SHALL BE BRICK MANHOLES PER S-3 OR PRECAST CONCRETE PER S-36, EXCEPT AS NOTED.
 - USE STANDARD MANHOLE FRAMES AND COVERS PER STD PLAN S-35, EXCEPT AS NOTED.
 - THE CONTRACTOR SHALL NOTIFY THE CONSTRUCTION DIVISION BY TELEPHONE (MADISON 2-4743, EXT. 8155) AT LEAST 24 HOURS BEFORE STARTING ANY WORK UNDER THIS CONTRACT.
 - THE CONTRACTOR SHALL MAINTAIN SEWER SERVICE AT ALL TIMES DURING CONSTRUCTION.
 - MANHOLE TOPS IN UNIMPROVED RIGHTS-OF-WAY TO BE SIX INCHES ABOVE FINISHED GRADE.
 - "Y" OR "T" BRANCHES MAY BE USED FOR CONNECTION TO MAIN LINE SEWERS.
 - APPROVAL OF THESE SEWER PLANS BY THE COUNTY OF LOS ANGELES DOES NOT CONSTITUTE A REPRESENTATION AS TO THE ACCURACY OF THE LOCATION OF OR THE EXISTENCE OR NON-EXISTENCE OF ANY UNDERGROUND UTILITY PIPE, OR STRUCTURE WITHIN THE LIMITS OF THIS PROJECT.
 - VITRIFIED CLAY PIPE JOINTS SHALL BE "S" OR "B" PER SECTION 208-2 OF STANDARD SPECIFICATIONS.
 - WORK SHALL BE CONSTRUCTED ACCORDING TO THE STANDARD SPECIFICATIONS FOR PUBLIC WORKS CONSTRUCTION (1970 EDITION WITH 1971 SUPPLEMENT) AND COUNTY ENGINEER SPECIAL PROVISIONS FOR THE CONSTRUCTION OF SANITARY SEWERS DATED APRIL 7, 1970 AND SHALL BE PROSECUTED ONLY IN THE PRESENCE OF THE COUNTY ENGINEER.
 - ALL SEWER STANDARD PLANS ARE ON FILE IN THE OFFICE OF COUNTY ENGINEER AND SHALL APPLY IN THE CONSTRUCTION OF THIS SEWER PROJECT.

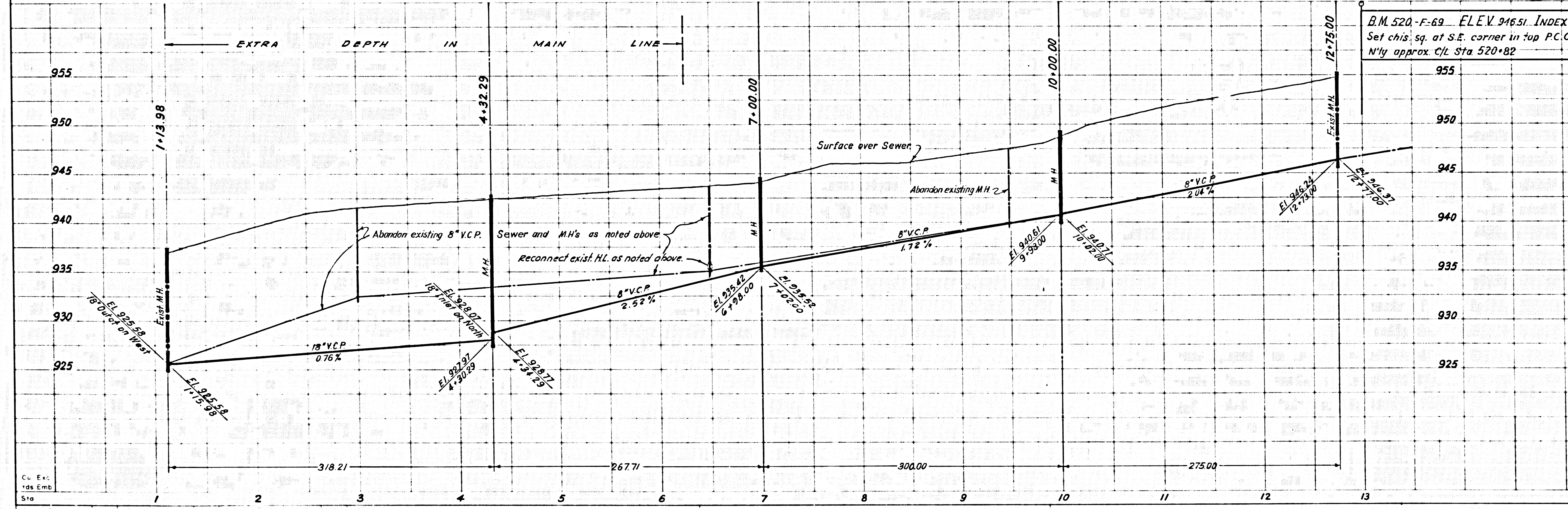
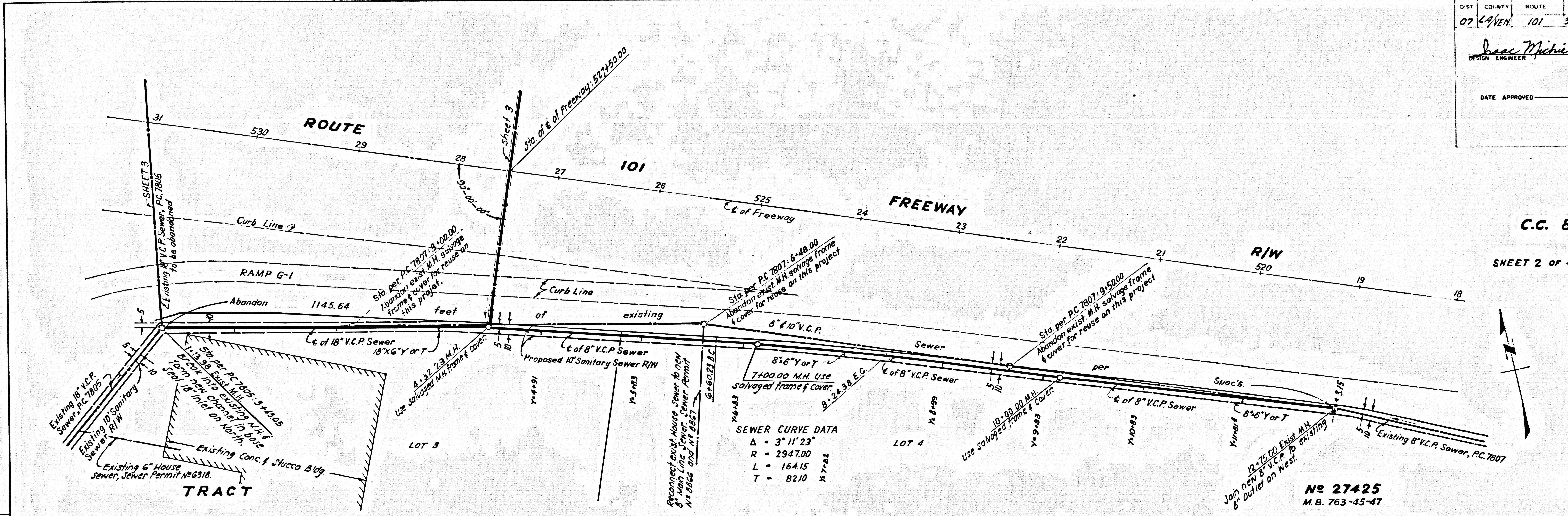
Cu Exc
Yds Emb
Sta

Project Engineer _____
Date _____

44352

DIST	COUNTY	MINUTE	POST M. E.	SHEET	TOTAL
07	LA/VEH	101	34.8/382,207/6,23	NO	SHEET

DESIGN ENGINEER *James Michiel* REGISTERED CIVIL ENGINEER
 NO. **11013**
 DATE APPROVED _____



C.C. 8190 101 329 0218.73

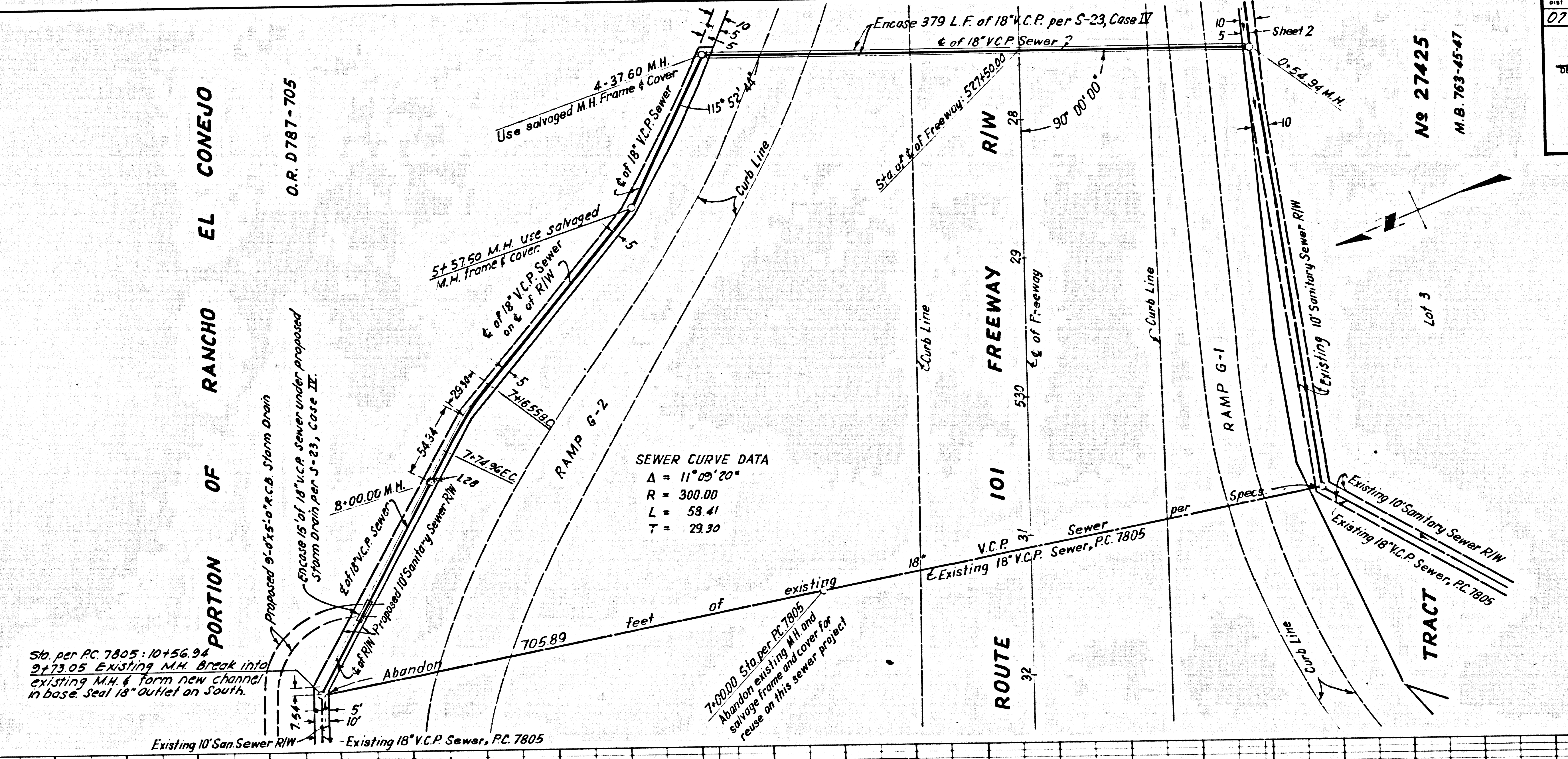
STATE	FEDERAL PROJECT No.	FISCAL YEAR	SHEET No.	TOTAL SHEETS
CALIF.				
COUNTY	NO. 14	PROJECT No.	SHEET No.	TOTAL SHEETS
07	LA VERNE	101	34,838	6,616,23

Isaac Michiel
 DESIGN ENGINEER REGISTERED CIVIL ENGINEER
 No. 11013

DATE APPROVED _____

C.C. 8190
SHEET 3 OF 4 SHEETS

44354

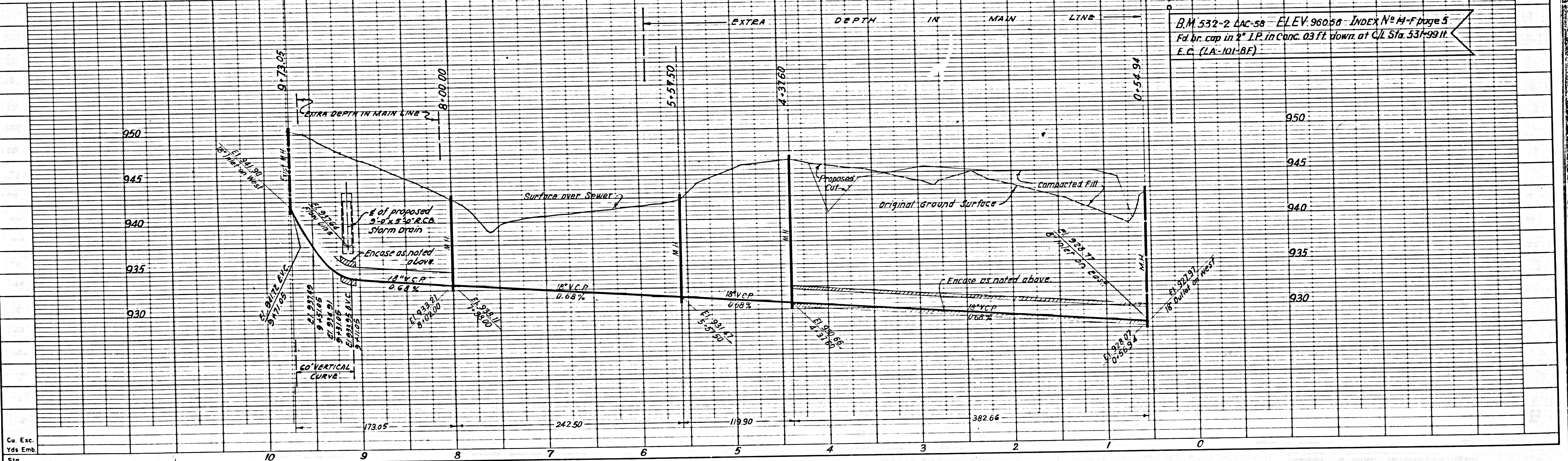


SEWER CURVE DATA
 $\Delta = 11^{\circ}09'20''$
 $R = 300.00$
 $L = 59.41$
 $T = 29.30$

Sta. per P.C. 7805: $10+56.94$
 $9+73.05$ Existing M.H. Break into existing M.H. & form new channel in base steel 18" outlet on south.

Abandon

7+00.00 Sta. per P.C. 7805
 Abandon existing 18" V.C.P. sewer, PC 7805, and cover for reuse on this sewer project

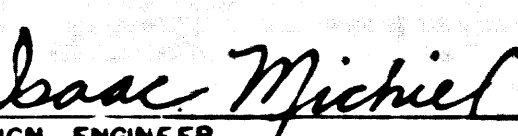


B.M. 532-2 Lac-58 ELEV. 960.56 INDEX N^o 4-F Page 5
 Fd. br. cap in 2" I.P. in Conc. 03 ft. down at C/L Sta. 531+99.11
 E.C. (2A-101-8F)

DESIGNED BY	INITIAL	DATE
REVISION		
CHECKED		
EMPLOYED		
SUPERVISED BY		
AMOUNT OF BAY		

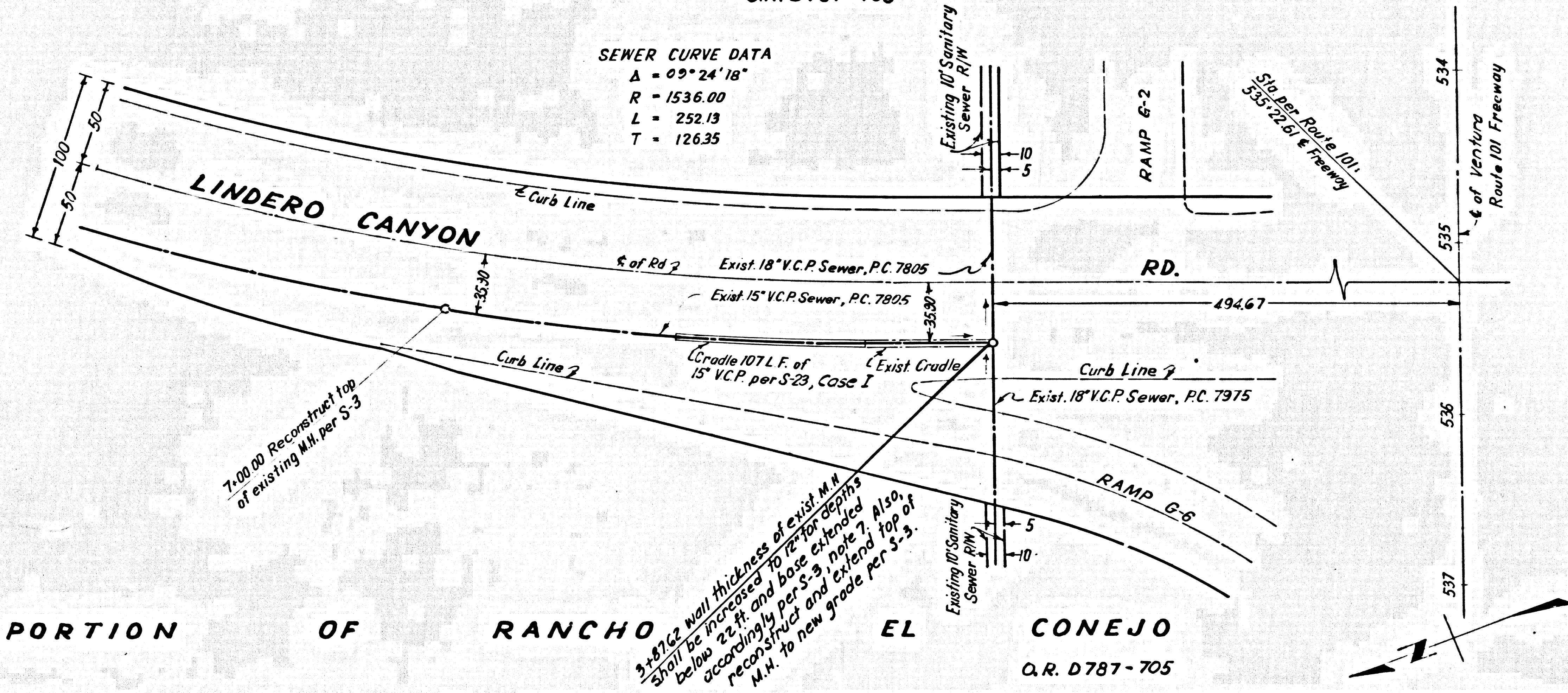
PROJECT ENGINEER	DATE	DESIGN ENGINEER	DATE	APPROVAL RECOMMENDED BY	DATE
------------------	------	-----------------	------	-------------------------	------

101 31009 0218.03

S.P.R. NO.	STATE	FEDERAL PROJECT NO.	FISCAL YEAR	SHEET NO.	TOTAL SHEETS
	CALIF.				
DIST.	COUNTY	NO. 101	NO. 101	TOTAL PROJECT SHEETS	TOTAL SHEETS
07	VEN.		348	0016, 23	
DESIGN ENGINEER		REGISTERED CIVIL ENGINEER			
 Isaac Michiel NO. 11013					
DATE APPROVED _____					

PORTION OF RANCHO EL CONEJO
O.R. D787-705

SEWER CURVE DATA
 $\Delta = 09^{\circ} 24' 18''$
 $R = 1536.00$
 $L = 252.13$
 $T = 126.35$



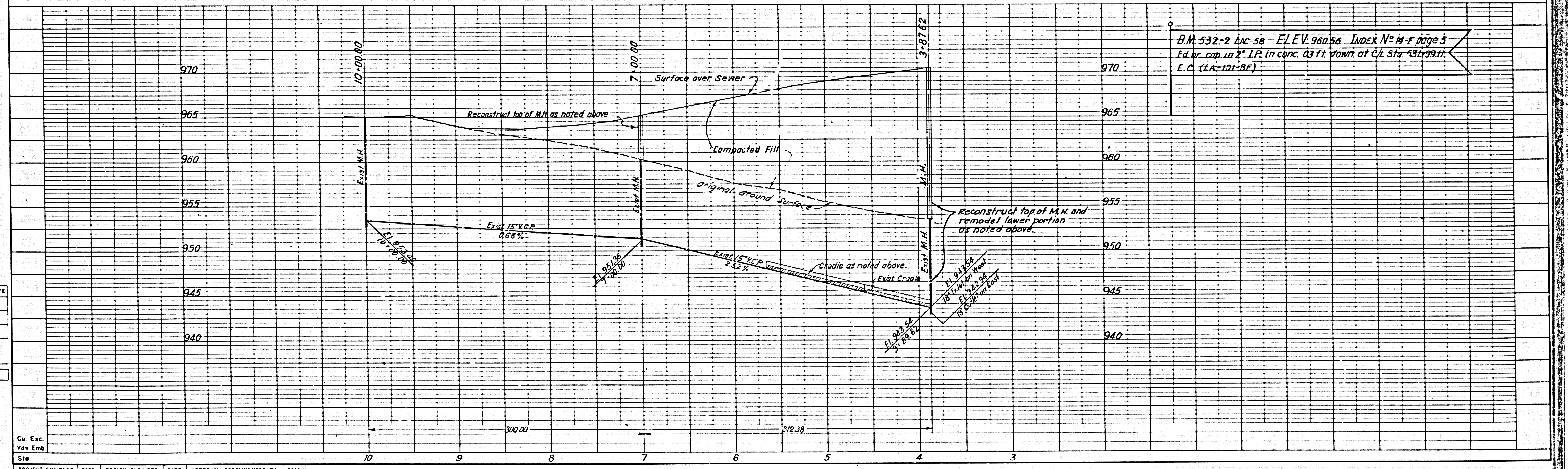
C.C. 8190

SHEET 4 OF 4 SHEETS

44355

PORTION OF RANCHO EL CONEJO
O.R. D787-705

3.471/2 wall thickness of exist. M.H. spot to be increased to 10\"/>



DESIGN DEPT	INITIAL	DATE
DESIGNED		
DRAWN		
CHECKED		
SUPERVISED BY		
PRINT OF WAY		

PROJECT ENGINEER	DATE	DESIGN ENGINEER	DATE	APPROVAL	RECOMMENDED BY	DATE