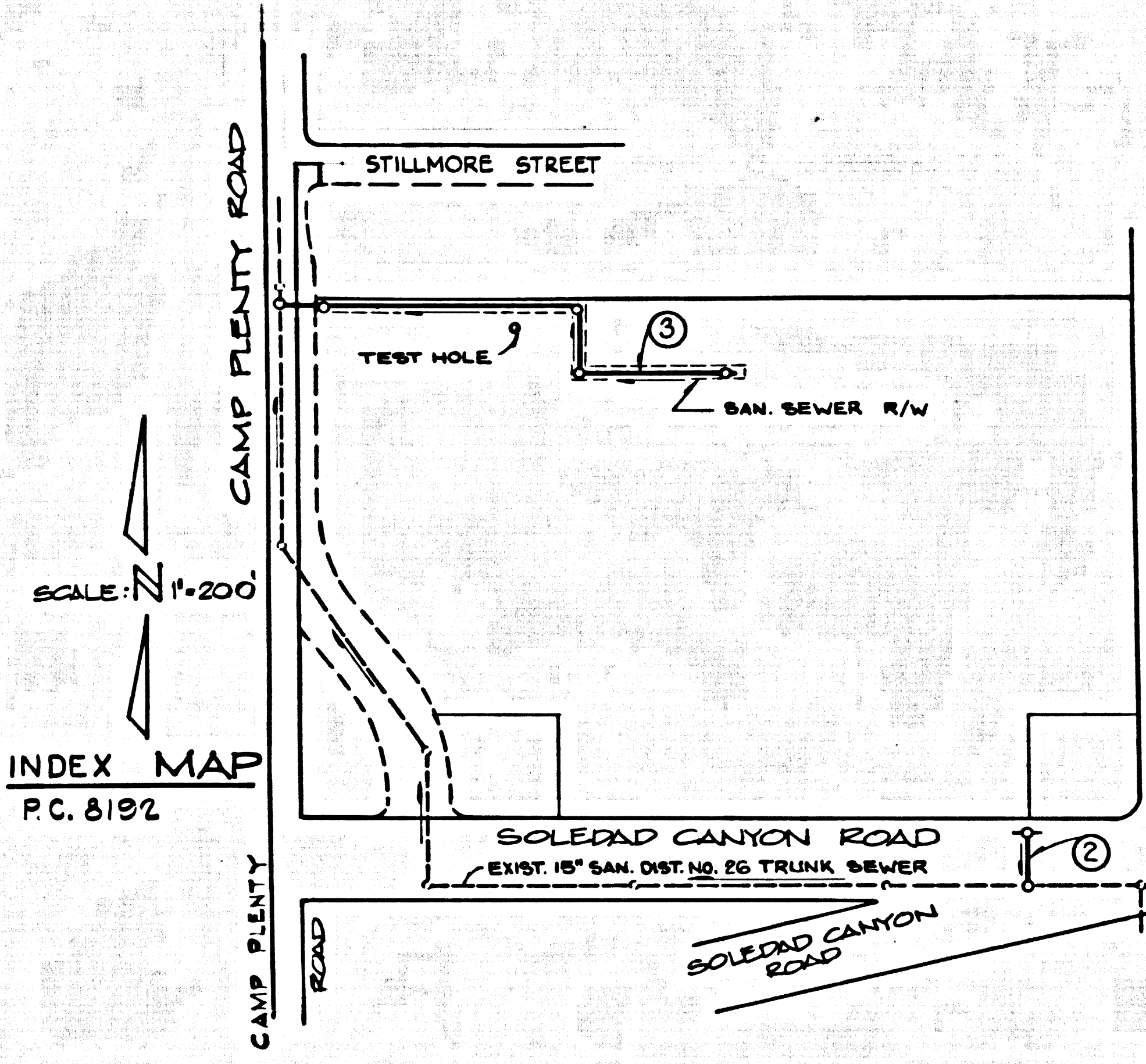


B.M. SL 1724 ELEV. 1366.132
 RDBM TAG E. CB WHITES CANYON RD. 40 FT. N.
 BCR @ NE COR SOLEDAD CANYON RD. + WHITES
 CANYON RD. 134 FT. N. + 40 FT. E. C/L INT.
 NEWHALL QUAD. 19 65

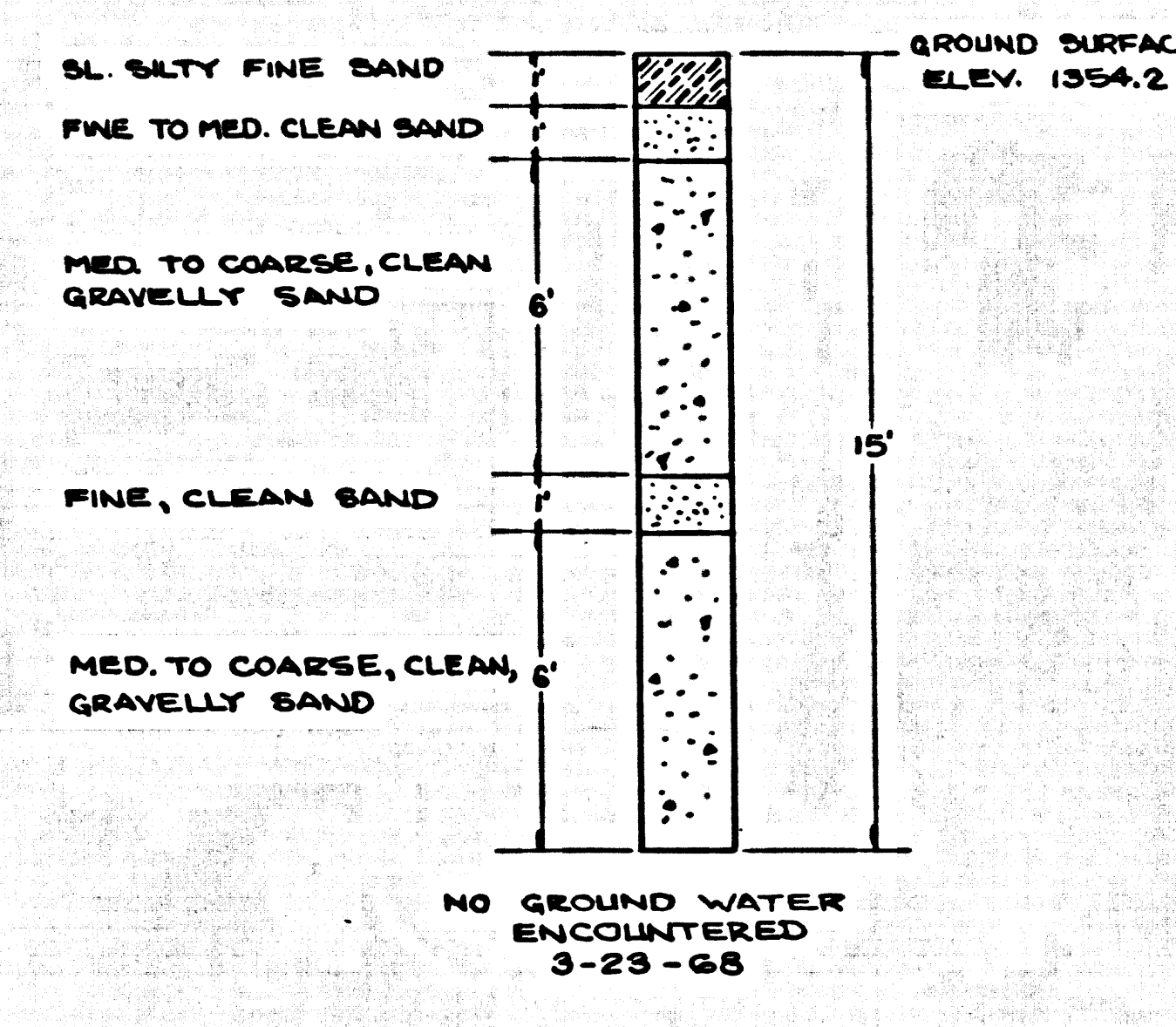
- NOTES:
 THE FOLLOWING LATEST REVISED STANDARD PLANS ON FILE IN THE OFFICE OF
 COUNTY ENGINEER SHALL APPLY IN THE CONSTRUCTION OF THIS
 PROJECT:
- | | |
|-----------------------------------------|------|
| LEGEND | 5-1 |
| MINIMUM PUBLIC SAFETY REQUIREMENTS | 5-2 |
| BRICK MANHOLE | 5-3 |
| MANHOLE FRAME & COVER | 5-15 |
| STANDARD MANHOLE STEP | 5-17 |
| BEDDING FOR SEWER PIPE | 5-21 |
| WYE OR TEE SUPPORT | 5-25 |
| ALLOWABLE TRENCH WIDTHS | 5-33 |
| NON-REINFORCED PRECAST CONCRETE MANHOLE | 5-5 |
| REINFORCED PRECAST CONCRETE MANHOLE | 5-6 |
| CRADLING AND ENCASUREMENT | 5-23 |

THE FOLLOWING SANITATION DISTRICT STANDARD PLANS SHALL
 APPLY IN THE CONSTRUCTION OF THE SANITARY DISTRICT
 JUNCTION CHAMBERS

STANDARD MANHOLE AND JUNCTION CHAMBER	5-a-201
STANDARD MANHOLE FRAME AND COVER	5-a-207



TEST HOLE DATA



DOUBLE SCALE
 NEWHALL BLDG. DIST. NO. 8.2

PROFILE ALIGNMENT AND GRADE OF
 SANITARY SEWERS P.C. 8192
 PAGE 1
 CONSTRUCTED IN
 R/W EAST OF CAMP
 PLENTY ROAD
 PARCEL MAP 802
 PRIVATE CONTRACT NO. 8192

- NOTES:
- PROVIDE STAKES ON THE PROPERTY LINE OR PROPERTY LINES PRODUCED AT RIGHT ANGLES TO THE SEWER LINE AT THE CENTER LINE OF EACH MANHOLE.
 - NO REPRESENTATIVE OF THE COUNTY ENGINEER WILL SURVEY OR LAY OUT ANY PORTION OF THE WORK.
 - THE PRIVATE ENGINEER SHALL FURNISH THE COUNTY ENGINEER WITH GRADE SHEETS AND STATIONING FOR ALL HOUSE LATERALS AND "T" OR "Y" BRANCHES AND SHALL PROVIDE STAKES FOR THEM AT THEIR PROPER LOCATION WITH STATIONING PLAINLY MARKED. ALL HOUSE LATERALS SHALL BE CONSTRUCTED IN A STRAIGHT ALIGNMENT AT RIGHT ANGLES FROM THE MAIN LINE SEWER EXCEPT AS SHOWN ON THE PLANS. HOUSE LATERALS FROM CHIMNEYS SHALL NOT HAVE AN ANGLE OF LESS THAN 45° WITH THE MAIN LINE SEWER. ANY CHANGE IN ALIGNMENT SHALL BE REQUESTED IN WRITING BY THE PRIVATE ENGINEER.
 - THE PRIVATE ENGINEER SHALL FURNISH THE HOUSE LATERAL DEPTH AT THE PROPERTY LINE BELOW THE TOP OF CURB ELEVATION FOR EACH HOUSE LATERAL ON THE GRADE SHEET.
 - NO REVISIONS SHALL BE MADE IN THESE PLANS WITHOUT THE APPROVAL OF THE COUNTY ENGINEER.
 - THE CONTRACTOR SHALL NOTIFY THE CONSTRUCTION DIVISION BY TELEPHONE, MADISON 9-2747, EXT. 81581, AT LEAST TWENTY-FOUR HOURS BEFORE STARTING ANY WORK UNDER THIS CONTRACT.
 - ALL STRUCTURES SHALL BE EITHER BRICK MANHOLES PER 5-3 OR PRECAST CONCRETE MANHOLES PER 5-5 OR 5-6, EXCEPT AS NOTED.
 - "Y" OR "T" BRANCHES MAY BE USED FOR CONNECTIONS TO MAINLINE SEWERS EXCEPT AS NOTED.
 - MANHOLE TOPS IN IMPROVED RIGHTS-OF-WAY TO BE LEVEL WITH FINISHED GRADE.
 - USE EXTRA STRENGTH PIPE. ALL PIPE IS STANDARD DEPTH EXCEPT AS NOTED.
 - VITRIFIED CLAY PIPE JOINTS SHALL BE TYPE "D", "T" OR "S" PER STANDARD SPECIFICATIONS SEC. 208-2.
 - IF A POWER POLE IS WITHIN THREE FEET OF THE SEWER, THE SEWER SHALL BE ENCASED, PER 5-23, TWO FEET ON EACH SIDE FROM THE POINT OF INTERFERENCE.
 - IF DURING THE COURSE OF CONSTRUCTION IT IS DETERMINED THAT THERE IS LESS THAN FOUR FEET OF COVER OVER THE TOP OF A MAIN LINE OR HOUSE LATERAL V.C.P. SEWER WHICH IS NOT INDICATED ON THE PLANS, THE PIPE SHALL BE ENCASED PER 5-23, UNLESS OTHERWISE APPROVED BY THE COUNTY ENGINEER.
 - HOUSE LATERALS TO BE CONSTRUCTED WITH INVERTS AT PROPERTY LINE 6 FEET BELOW CURB GRADE EXCEPT AS NOTED.
 - REINFORCE ALL TRENCHES WITHIN PAVED AREAS TO MEET L.A. COUNTY ROAD DEPT. OR CALIFORNIA STATE HIGHWAY REQUIREMENTS IN ACCORDANCE WITH PERMITS.
 - SEWERS TO BE TESTED FOR LEAKAGE PER SECTION 206-2.37 UNIFORM STANDARD SPECIFICATIONS.
 - REFER TO SECTION 7-10.4.1 OF THE STANDARD SPECIFICATIONS, REGARDING SAFETY ORDERS.
 - SPECIAL ACCRES IN DESIGNATED AREAS.
 - NO SLOTTED TRENCH AND REPLACE OTHER EARTH REMOVED SO AS TO ACHIEVE THE NATURAL OR FINISHED GRADES AND SLOPES SHOWN ON THE GRADING PLAN APPROVED FOR THIS TRACT BY THE BUILDING AND SAFETY DIVISION.
 - BE ALL BACKFILL AND EARTH REPLACED SHALL BE COMPACTED TO A MINIMUM OF 90% OF MAXIMUM DENSITY PER A.S.T.M. STAND. AND METHOD OF TEST 2008-57T AS MODIFIED. ACCEPTABLE CERTIFICATION OF SUCH COMPACTON SHALL BE SUBMITTED TO THE CONSTRUCTION DIVISION.
 - ALL JOINTS BETWEEN CAST IRON PIPE AND VITRIFIED CLAY PIPE SHALL BE MADE WITH A RUBBER SLEEVE JOINT, TYPE "C" OR "D" (WITH BUSHING IF NECESSARY) PER STANDARD SPECIFICATIONS, SEC. 208-2.

No connections for the disposal of industrial wastes shall be made as shown on these drawings without written permission from the Chief Engineer and General Manager of the County Sanitation Districts.

County Sanitation Districts shall be notified prior to the following as that required inspection can be made (Phone 257-1025 - 4-8244444).

Commencement of construction of manholes on District trunk sewer.

In-charge of the project.

COLLECT CHARGES
 AS INDICATED

REVISION
 REVISED SEWER GRADES BETWEEN STATIONS 4+1800 & 4+1800 ON PAGE 3 DUE TO HIGH GROUND WATER.
 APPROVED Ralph Schala DATE 6/25/64
 COUNTY ENGINEER
 OFFICE OF THE COUNTY ENGINEER

NOTE:
 GRADES TO WHICH THIS IMPROVEMENT IS TO BE CONSTRUCTED ARE SHOWN ON PLANS AND PROFILES. GRADE POINTS FOR TOP OF CURBS, CENTER LINE OF STREETS, OR CENTER LINE OF ALLEYS ARE SHOWN BY CIRCLES ON PROFILES. AT ALL POINTS BETWEEN DESIGNATED POINTS THE GRADE SHALL BE ESTABLISHED SO AS TO CONFORM TO A STRAIGHT LINE DRAWN BETWEEN SAID DESIGNATED POINTS. ELEVATIONS ARE IN FEET ABOVE U.S.C. & G.S. SEA LEVEL DATUM OF 1929.

WORK SHALL BE CONSTRUCTED ACCORDING TO THE UNIFORM STANDARD SPECIFICATIONS FOR PUBLIC WORKS CONSTRUCTION AND COUNTY ENGINEER SPECIAL PROVISIONS DATED 5-1-64, 5-1-62, AS REVISED, AND SHALL BE PROTECTED ONLY IN THE PRESENCE OF THE COUNTY ENGINEER.

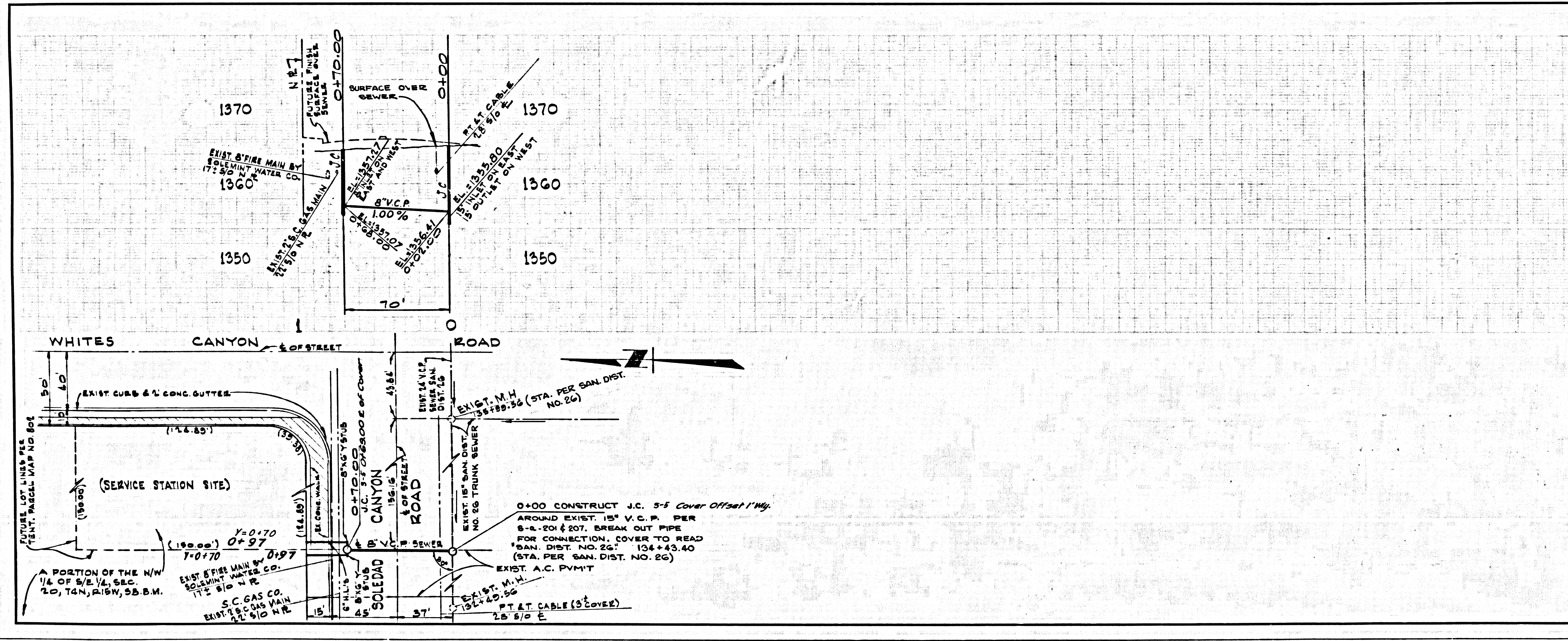
BEFORE WORK CAN BE STARTED, THE CONTRACTOR MUST OBTAIN A PERMIT TO EXCAVATE IN COUNTY STREETS FROM THE L.A. COUNTY ROAD DEPT., DISTRICT OFFICE NO. 11, NEWHALL, AND PAY A FEE TO THE COUNTY ENGINEER, ROOM 330, COUNTY ENGINEERING BUILDING, 100 WEST SECOND STREET, LOS ANGELES, CALIFORNIA 90012.

APPROVAL OF THIS PLAN BY THE COUNTY OF LOS ANGELES DOES NOT CONSTITUTE A REPRESENTATION AS TO THE ACCURACY OF THE LOCATION OR THE EXISTENCE OR NON-EXISTENCE OF ANY UNDERGROUND UTILITY PIPE, OR STRUCTURE WITHIN THE LIMITS OF THIS PROJECT. THIS NOTE APPLIES TO ALL PAGES.

IF WORK IS TO BE DONE IN A STATE HIGHWAY, A PERMIT MUST BE OBTAINED FROM THE STATE OF CALIFORNIA, DIVISION OF HIGHWAYS, 120 SOUTH SPRING STREET, LOS ANGELES, CALIFORNIA.

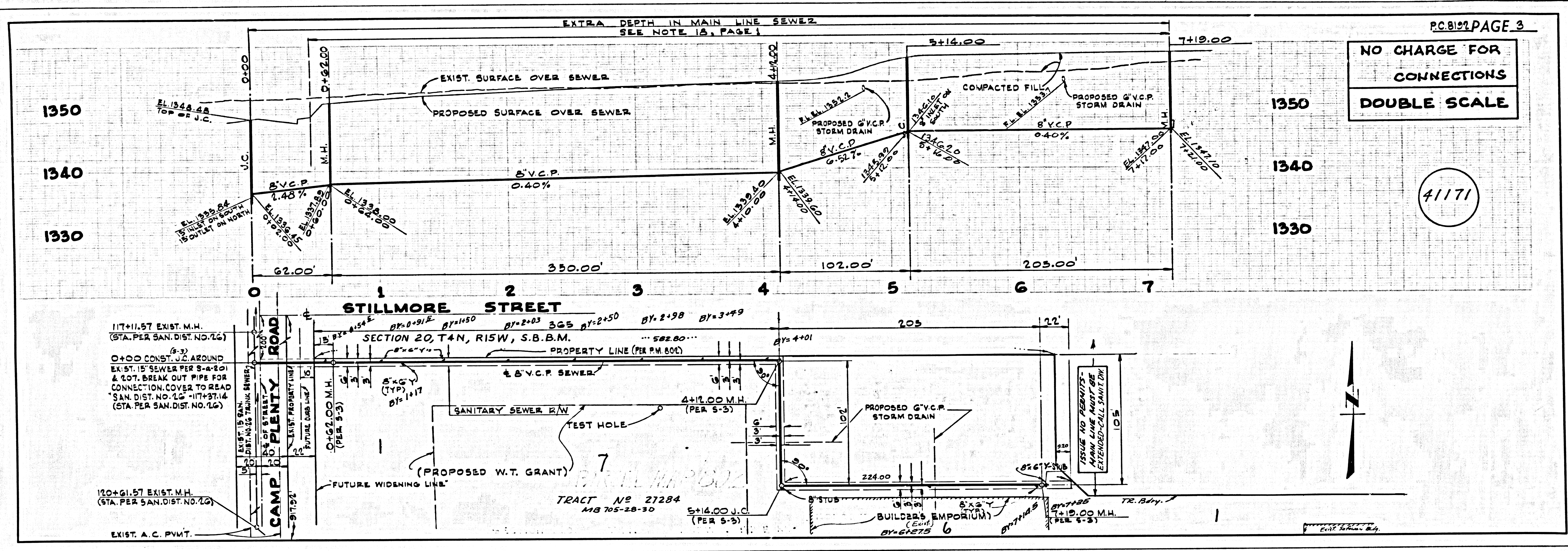
COUNTY OF LOS ANGELES, CALIFORNIA
 JOHN A. LAMBIE, COUNTY ENGINEER J. D. PARKHURST, CHIEF ENGINEER
 CO. SAN. DIST. NO. 8.2 REGIONAL OFFICE, SANITARY DISTRICT NO. 8.2
 APPROVED BY: [Signature] REGIONAL ENGINEER APPROVED BY: [Signature] OFFICE ENGINEER

CHECKED BY: Ralph Schala 2/18/64
 REG. CE. NO. 13906
 J. N. 0369.44



P. C. 8192 PAGE 2
 NO CHARGE
 FOR
 CONNECTIONS
 DOUBLE SCALE

41170



117+11.57 EXIST. M.H.
(STA. PER SAN. DIST. NO. 16)

0+00 CONST. J.C. AROUND
EXIST. 15" SEWER PER S-4-101
& 20". BREAK OUT PIPE FOR
CONNECTION. COVER TO READ
SAN. DIST. NO. 16-117+37.14
(STA. PER SAN. DIST. NO. 16)

110+61.57 EXIST. M.H.
(STA. PER SAN. DIST. NO. 16)

EXIST. A.C. PVMT.

TRACT NO 27284
MB 705-28-30

PAGE