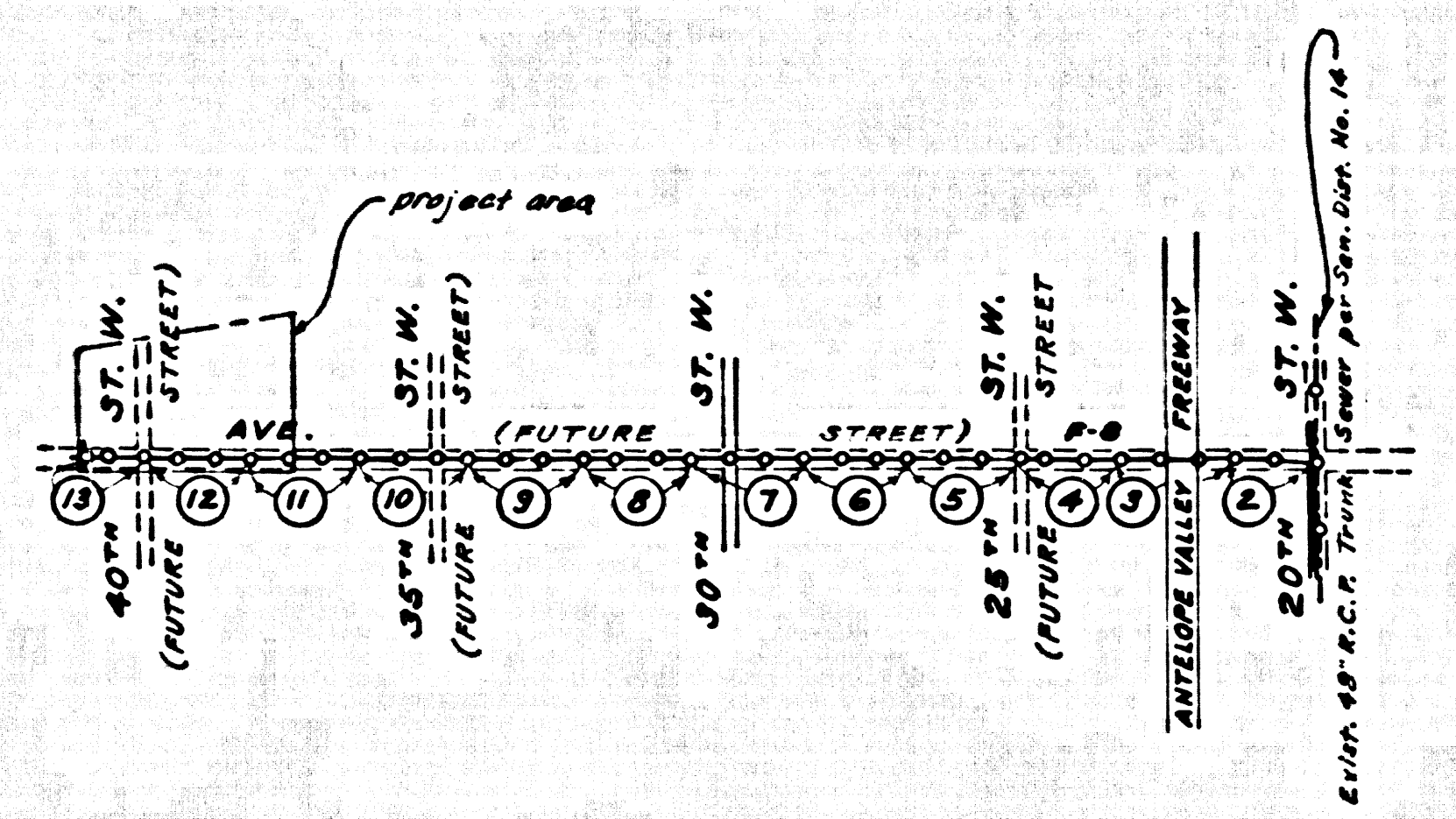


C.C. 8193

B.M. AV 368 ELEV. 2308.360  
F.B. 2142-216, 20" ST. W. & AVE. F-8  
AT & 1/4" C.E. 1/4 SEC. COR.  
MON. DN. 18'



INDEX MAP  
ANTELOPE VALLEY RECREATION FACILITY  
C.C. 8193

MANHOLE TOPS IN UNIMPROVED RIGHTS-OF-WAY TO BE SIX-INCHES ABOVE FINISHED GRADE.

Scale: 1"=200'

COLLECT CHARGES AS INDICATED

### LANCASTER BUILDING DISTRICT No. 8 DOUBLE SCALE

USE EXTRA STRENGTH PIPE. ALL PIPE IS STANDARD UNLESS NOTED OTHERWISE.  
USE MECHANICAL COMPRESSION JOINTS FOR ALL VITRIFIED CLAY PIPE SEWERS.  
ALL STRUCTURES SHALL BE BRICK MANHOLE, UNLESS NOTED OTHERWISE.  
USE STANDARD MANHOLE FRAMES AND COVERS, PER STANDARD DRAWING S-15.  
SEWERS TO BE TESTED FOR LEAKAGE PER SECTION 306-E.3.3 OF THE STANDARD SPECIFICATIONS.  
CONSTRUCT HOUSE LATERALS WITH INVERTS AT PROPERTY LINE A FEET BELOW CURB GRADE, OR GRADE OF CENTER LINE OF STREET, EXCEPT AS NOTED.  
FIGURES IN CIRCLES AT ENDS OF HOUSE LATERALS INDICATE DEPTH BELOW CURB GRADE, OR GRADE OF CENTER LINE OF STREET.  
HOUSE LATERALS SHALL BE CONSTRUCTED IN A STRAIGHT ALIGNMENT AT RIGHT ANGLES FROM THE MAIN LINE SEWER EXCEPT AS NOTED ON THE PLANS. HOUSE LATERALS FROM CHIMNEYS SHALL HAVE AN ANGLE OF LESS THAN 45 DEGREES WITH THE MAIN LINE SEWER.  
THE CONTRACTOR SHALL NOTIFY THE CONSTRUCTION DIVISION BY TELEPHONE MADISON 9-070, EXT. 1151 AT LEAST 24 HOURS BEFORE CONSTRUCTION IN STATE HIGHWAYS SHALL COMPLY WITH STATE HIGHWAY PERMIT AND THE CONTRACTOR SHALL PAY ALL COSTS IN CONNECTION THEREWITH.  
ALL STATE AND LOCAL TRENCH SAFETY ORDERS WILL BE RIGIDLY ENFORCED.  
RESURFACING SCHEDULE: RESURFACE TRENCH WITHIN PAVED AREA WITH PRIME ROSS AND ONE INCHES IN THICKNESS ON UNPAVED AREAS WITH APPROPRIATE BASE MATERIALS, EXCEPT AS NOTED BELOW.

PAGE NO.	STREET	STATION LIMITS		TYPE OF RESURFACING
		FROM	TO	
7	30th St. West	53+79.28	54+79.28	4" of Type II Asphalt Concrete

STREET RESURFACING METHODS SHALL BE IN ACCORDANCE WITH SECTION 306-112.0 OF THE STANDARD SPECIFICATIONS.  
FINAL STREET RESURFACING IN ANY LOCATION SHALL BE COMPLETED WITHIN 30 DAYS AFTER COMPLETION OF TRENCH BACKFILL.

ALL CONCRETE CROSS CUTTERS, CURBS, GUTTERS, PAVEMENT, AND DRIVEWAYS SHALL BE FINISHED OR JACKED PER LOS ANGELES COUNTY ROAD DEPARTMENT REQUIREMENTS.  
THE FOLLOWING LATEST REVISED STANDARD PLANS ON FILE IN THE OFFICE OF COUNTY ENGINEER SHALL APPLY IN THE CONSTRUCTION OF THIS PROJECT.

SYMBOL	DESCRIPTION	SECTION
.....	MINIMUM EXCAVATION SAFETY REQUIREMENTS	S-1
.....	BRICK MANHOLE	S-2
.....	MANHOLE FRAME AND COVER	S-15
.....	MANHOLE STEP	S-17
.....	SEEDING FOR SEWER PIPE	S-21
.....	SPECIAL SUPPORT AND PROTECTION	S-22
.....	CRASSING AND INCASING	S-23
.....	STANDARD WIRE SUPPORT	S-24
.....	STOPPER	S-30
.....	CHIMNEY BASE	S-37

THE UNDERGROUND UTILITY COMPANIES WITHIN THE LIMITS OF THIS PROJECT ARE AS FOLLOWS:

- (1) NONE
- (2)
- (3)
- (4)

Note:  
Contractor shall notify Sanitation Districts of 384 (28) at least 72 hours prior to making core drill at Sta. 0+96.96  
County Sanitation Districts shall be notified prior to the following as that required inspections can be made (Phone 337-1025 or 426-8000)  
Acceptance of the project.

No connection for the disposal of industrial wastes shall be made to sewers shown on these drawings without written permission from the Chief Engineer and General Manager of the County Sanitation Districts.

### CASH CONTRACT NO. 8193

PROFILE, ALIGNMENT AND GRADE OF  
SANITARY SEWERS

CONSTRUCTED FOR  
**ANTELOPE VALLEY WASTE WATER RECLAMATION PROJECT**  
IN FUTURE AVENUE F-8 AND OTHER RIGHTS OF WAY  
W.S. 71  
7 SHEETS, 13 PAGES

SCALE VERT. 1"=2'  
HORIZ. 1"=20'

SEPTEMBER, 1969

COUNTY OF LOS ANGELES, CALIFORNIA  
JOHN A. LAMBIE COUNTY ENGINEER

APPROVED BY: *Richard E. Kauder*  
SANITATION DIVISION ENGINEER

SUBMITTED BY: *Richard E. Kauder* 12/18/69  
GENERAL ENGINEER (CIVIL)

J. D. PARKHURST  
CHIEF ENGINEER OF COUNTY  
LAND DIVISION (CIVIL)

APPROVED BY: *Richard E. Kauder*  
SANITATION DIVISION ENGINEER

DESIGNED BY: *Richard E. Kauder* 7/20/69  
GENERAL ENGINEER (CIVIL)

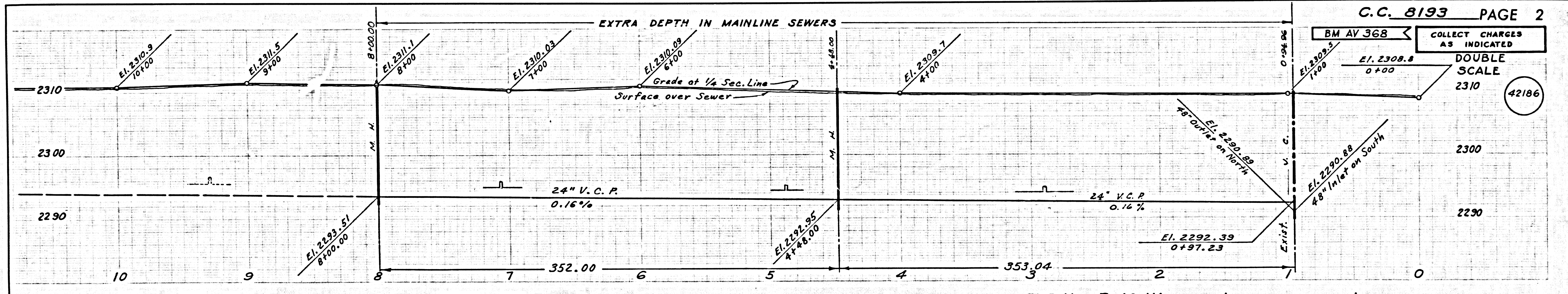
APPROVED BY: *Richard E. Kauder*  
SANITATION DIVISION ENGINEER

NOTES:  
WORK SHALL BE CONSTRUCTED ACCORDING TO STANDARD SPECIFICATIONS DATED JANUARY 2, 1968, AS AMENDED, ON FILE IN THE OFFICE OF THE COUNTY ENGINEER AND SHALL BE PROTECTED DURING THE PRESENCE OF THE COUNTY ENGINEER.  
GRADES TO WHICH THIS IMPROVEMENT IS TO BE CONSTRUCTED ARE SHOWN ON PLANS AND PROFILE. GRADE POINTS FOR TOP OF CURB, CENTER LINE OF STREET OR CENTER LINE OF ALLEY ARE SHOWN BY CIRCLES ON PROFILE AT ALL POINTS BETWEEN DESIGNATED POINTS THE GRADE SHALL BE ESTABLISHED SO AS TO CONFORM TO A STRAIGHT LINE DRAWN BETWEEN SAID DESIGNATED POINTS.  
ELEVATIONS ARE IN FEET ABOVE U.S.C. & G.S. MEAN SEA LEVEL DATUM OF 1929.  
UNIT PRICES FOR ADDITIONAL WORK WHICH MAY BE REQUIRED BUT WHICH CANNOT BE ASCERTAINED IN ADVANCE, SHALL BE SUBMITTED IN THE PROPOSAL.  
THIS DRAWING AND THE DATA HEREON ARE HEREBY MADE A PART OF THE SPECIFICATIONS.

LAYOUT	MAYNARD	JANUARY '69	UNDERGROUND	MAYNARD	JANUARY '69
TRACED	MAYNARD & KAUDER	JULY '69	BENCH MARKS		
CHECKED	KAUDER	AUGUST '69	MAINTENANCE		
F.B. 2142 & 3474			INSPECTOR	FORSTER	JAN. '71
A.B. 3105, 3107, & 3114 W.S. 71			RECORD PLANS	MAYNARD	JAN. '71

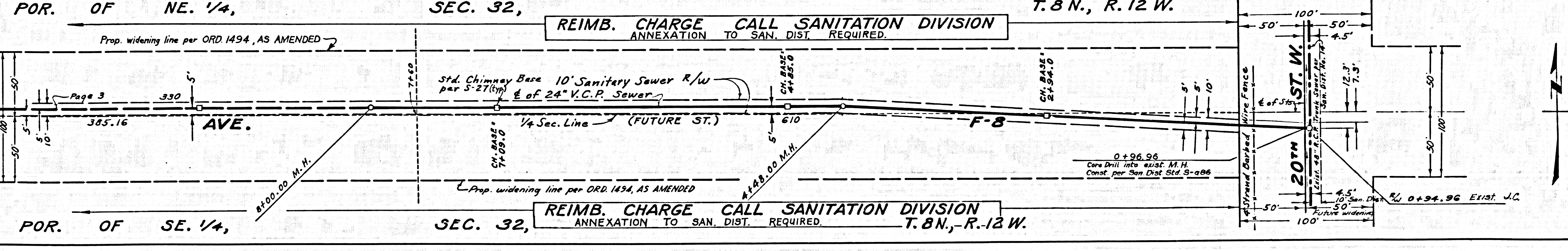
B.M.: F.B. 2142, pg. 216, 226

C.C. 8193



C.C. 8193 PAGE 2

COLLECT CHARGES AS INDICATED  
DOUBLE SCALE



B.M.: F.B. 2142, pg. 216, 226

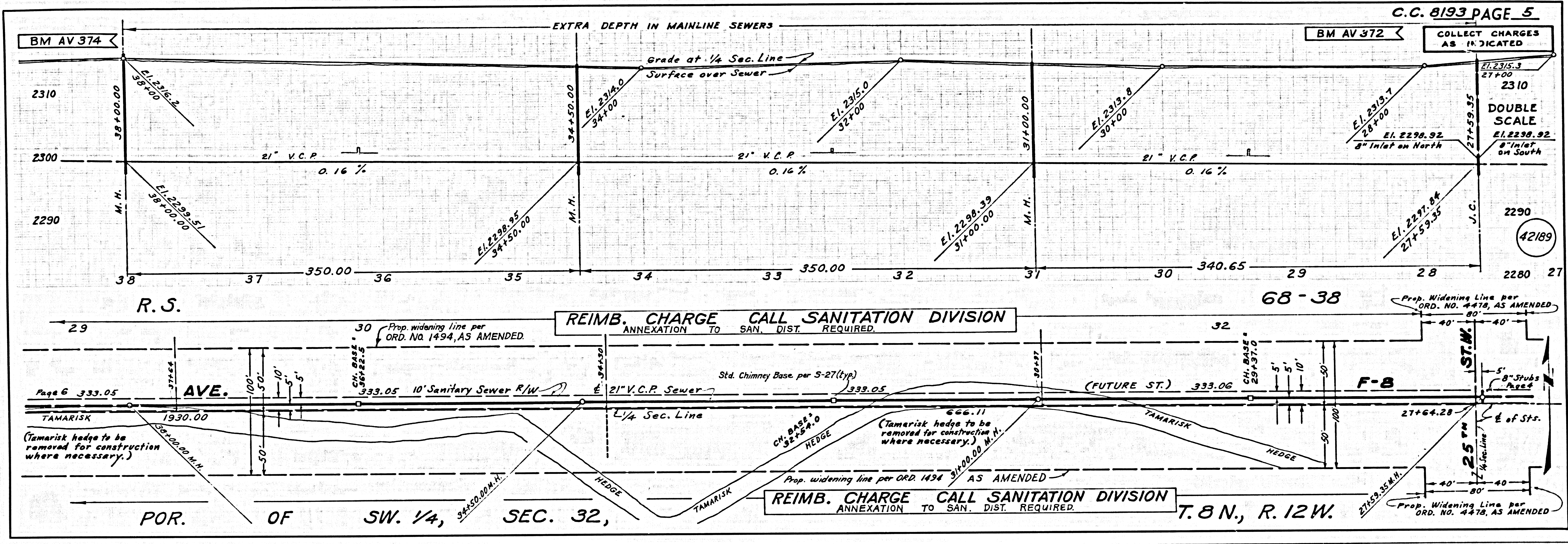
Exist. J.C.: F.B. 2142, pg. 260

Topo: F.B. 2142, pg. 251, 252

Elevs: F.B. 2142, pg. 225-228, 260



C.C. 8193

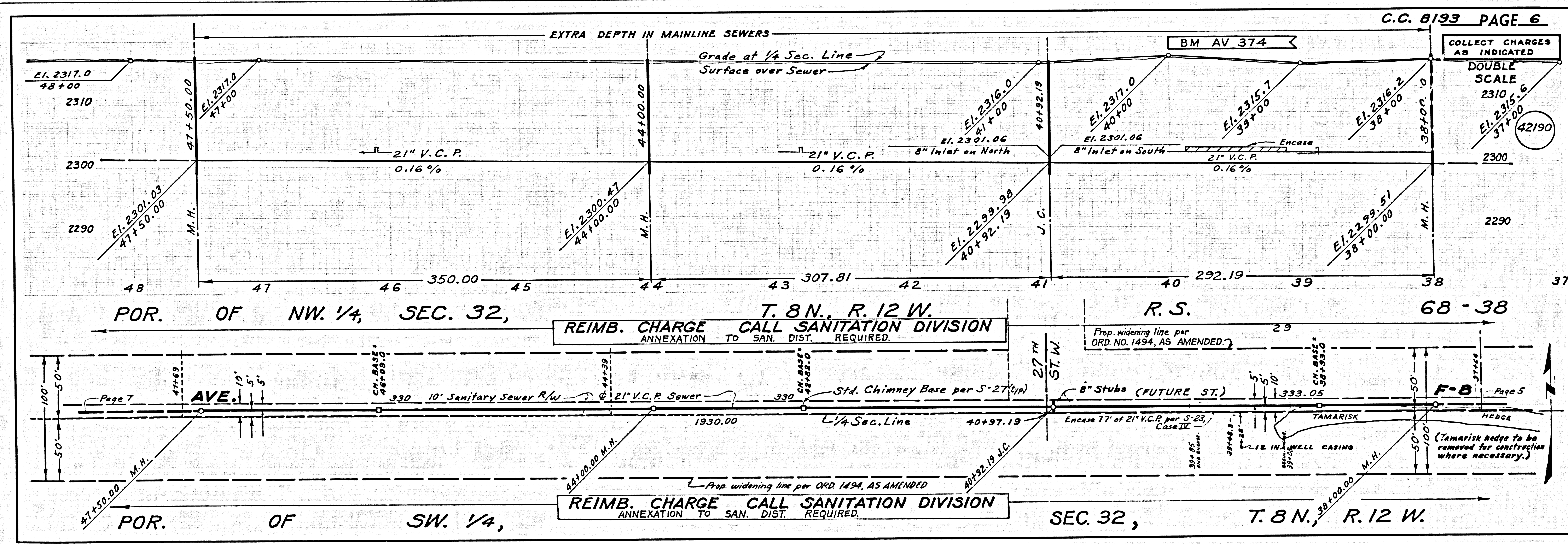


B.M.: F.B. 2142, pg. 235

Topo: F.B. 2142, pg. 255, 256

Elevs.: F.B. 2142, pg. 232-235

C.C. 8193

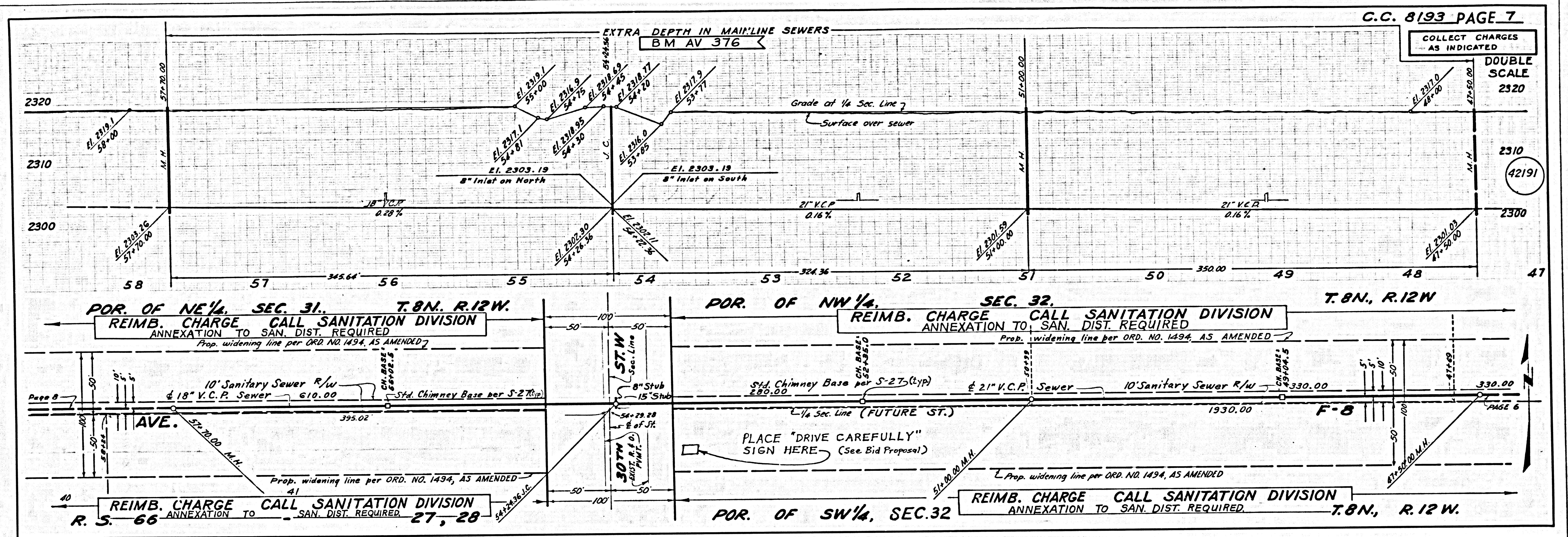


B.M.: F.B. 2142, pg. 235

Topo: F.B. 2142, pg. 256

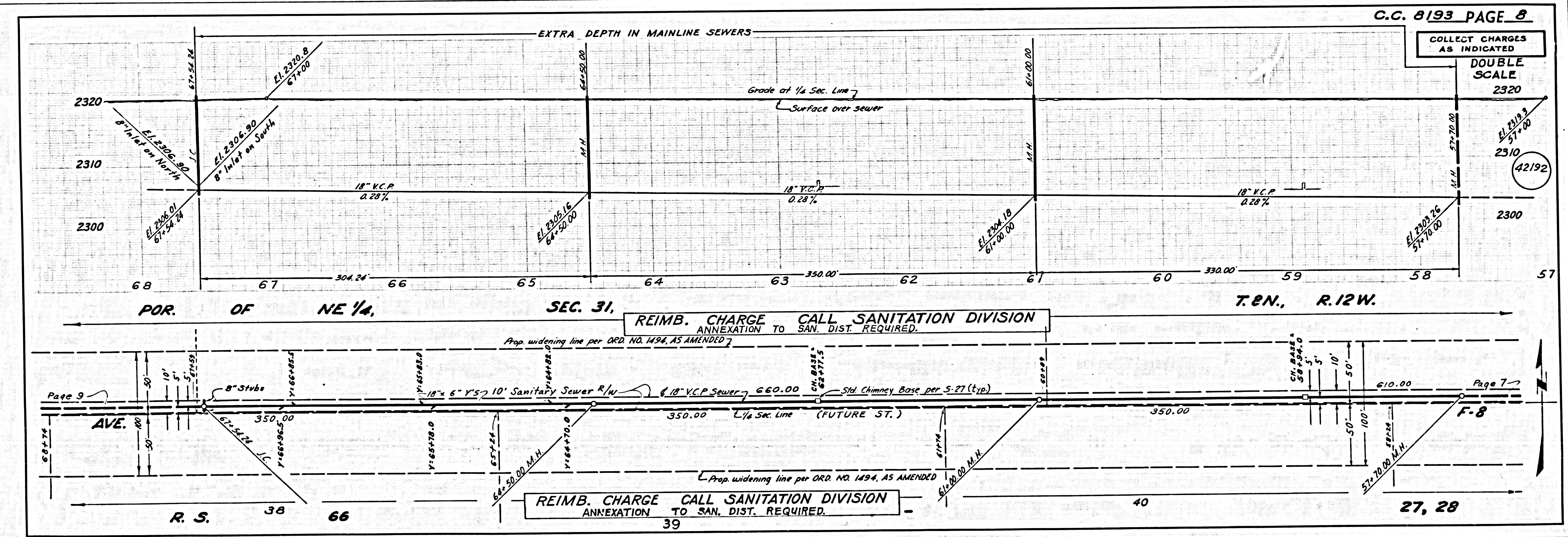
Elevs.: F.B. 2142, pg. 234-237

C.C. 8193



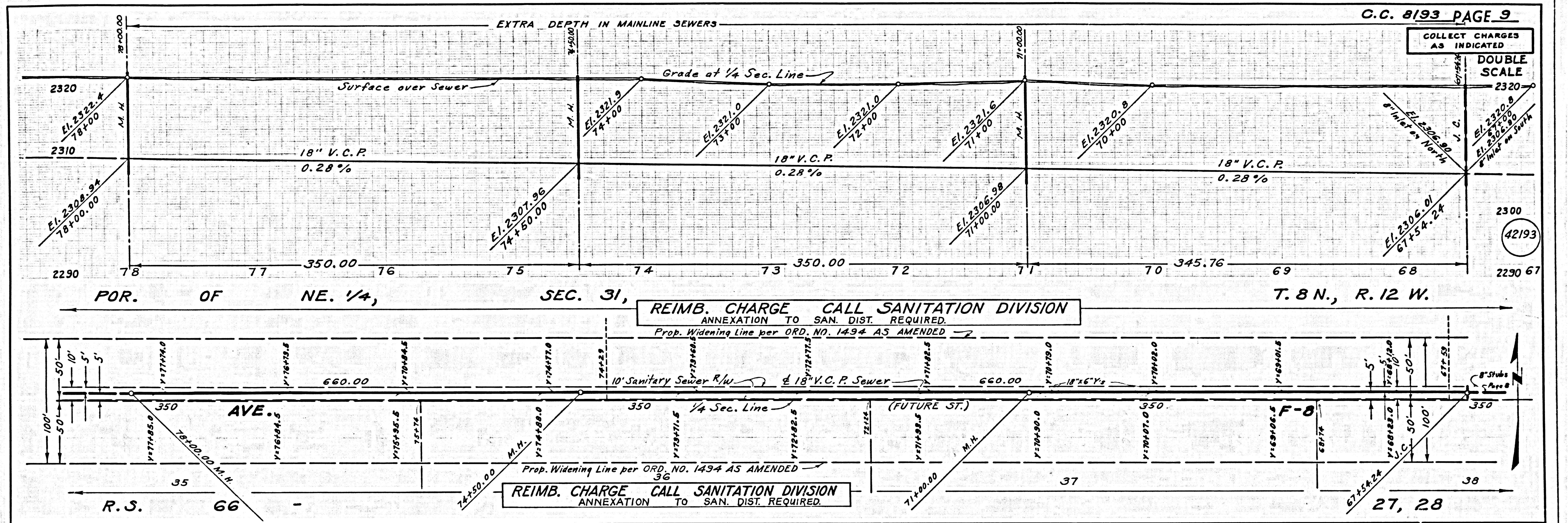
B.M.: F.B. 2142, pg. 238      ±: F.B. 3474, pg. 20, 21      Topo: F.B. 2142, pg. 256, 257      Elevs.: F.B. 2142, pg. 236-240

C.C. 8193



±: F.B. 3474, pg. 19, 20      Elevs.: F.B. 2142, pg. 239-242

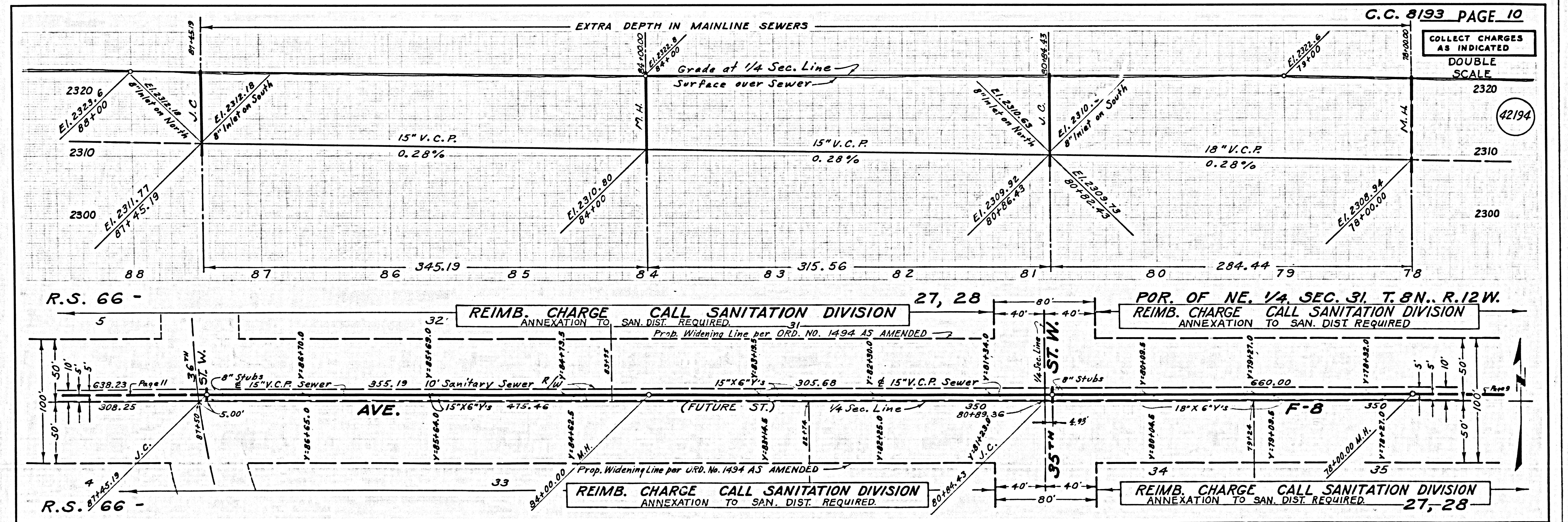
C.C. 8183



E: F.B. 3474, pg. 19, 20

Elevs.: F.B. 2142, pg. 241-244

C.C. 8183



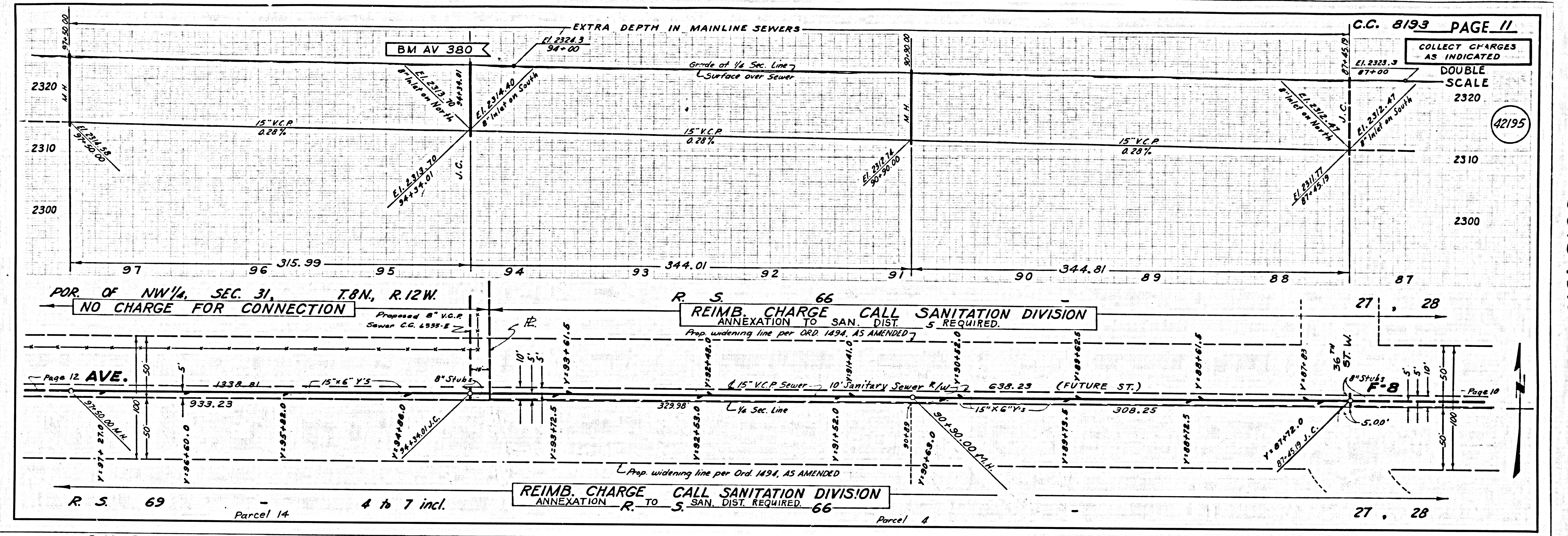
B.M.: F.B. 2142, pg. 244

E: F.B. 3474, pg. 18

Top: none

Elevs.: F.B. 2142, pg. 243-246

C.C. 8193



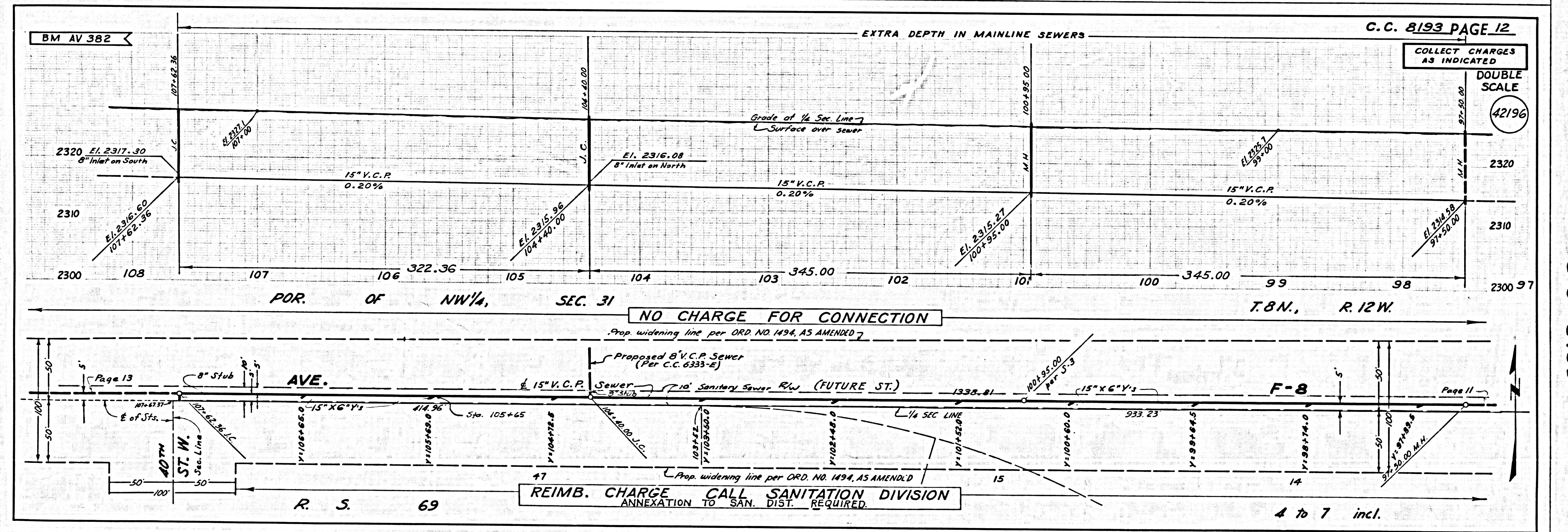
B.M.: F.B. 2142, pg. 247

E: F.B. 3474, pg. 17, 18

Topo: F.B. 2142, pg. 257

Elevs.: F.B. 2142, pg. 245-248

C.C. 8193



B.M.: F.B. 2142, pg. 250

E: F.B. 3474, pg. 16, 17

Topo: F.B. 2142, pg. 257, 258

Elevs.: F.B. 2142, pg. 247-250

C.C. 8193 PAGE 11

COLLECT CHARGES AS INDICATED

DOUBLE SCALE

SCALE 2320

42195

C.C. 8193 PAGE 12

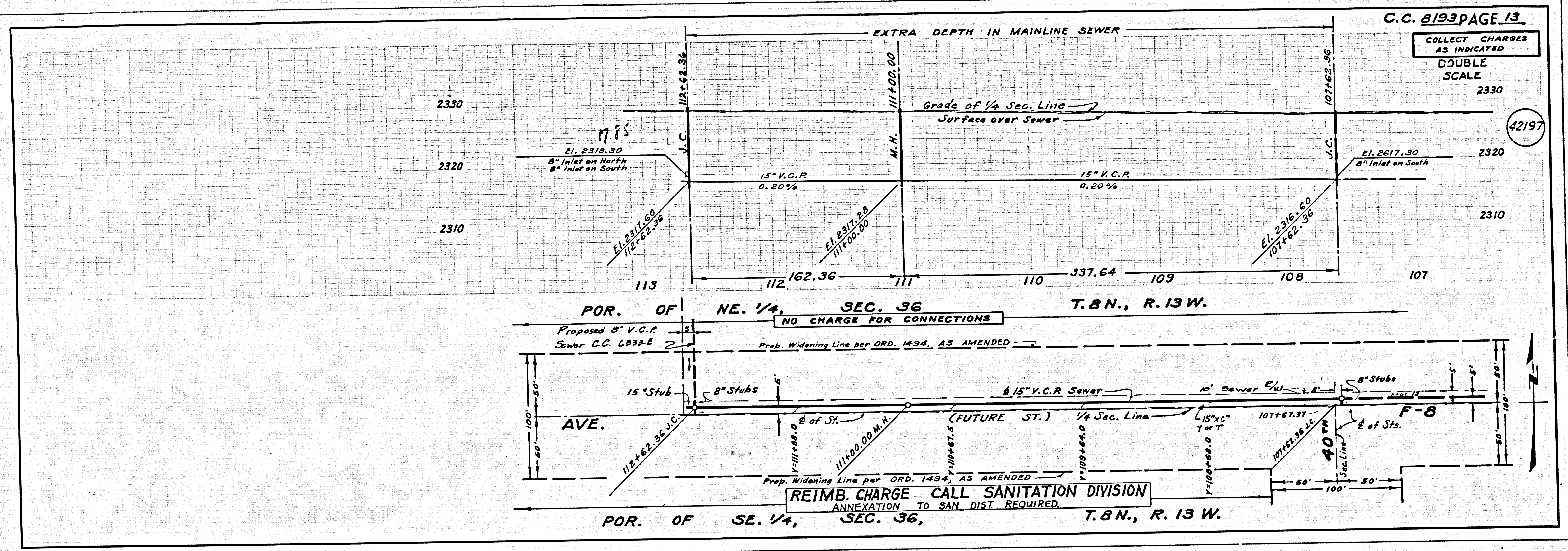
COLLECT CHARGES AS INDICATED

DOUBLE SCALE

SCALE 2320

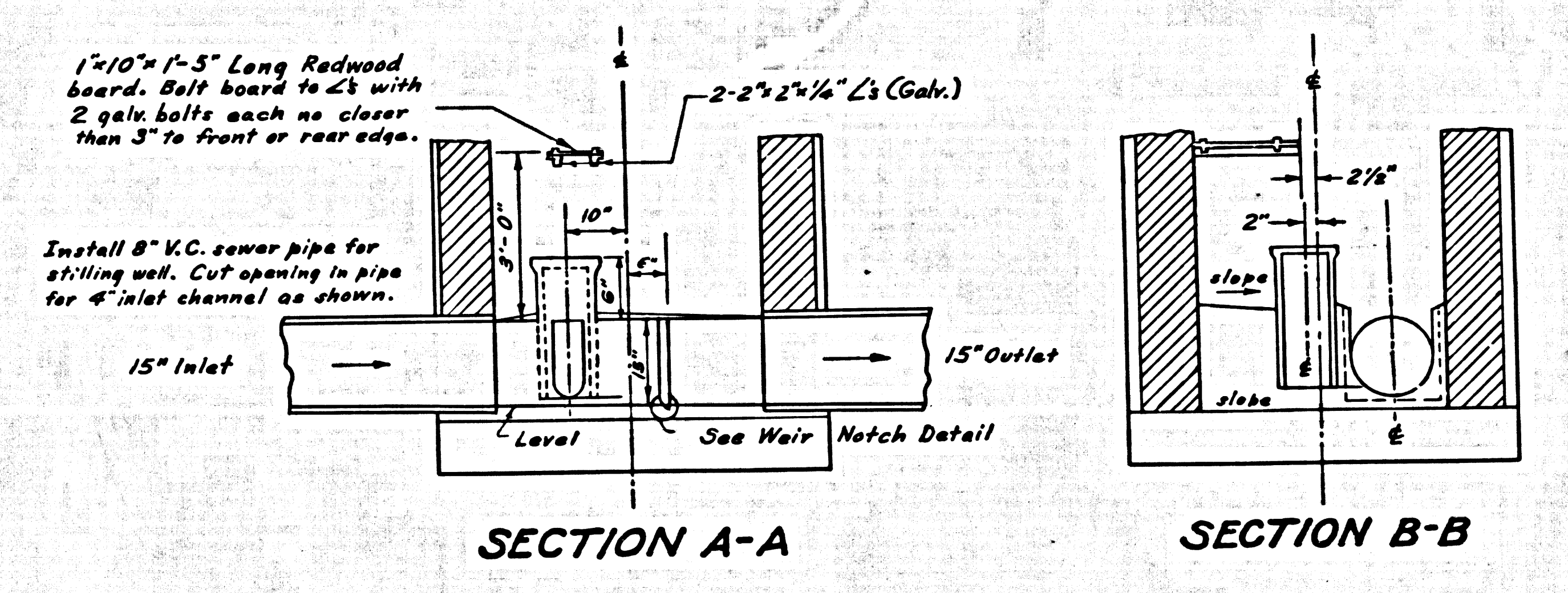
42196

C.C. 8193



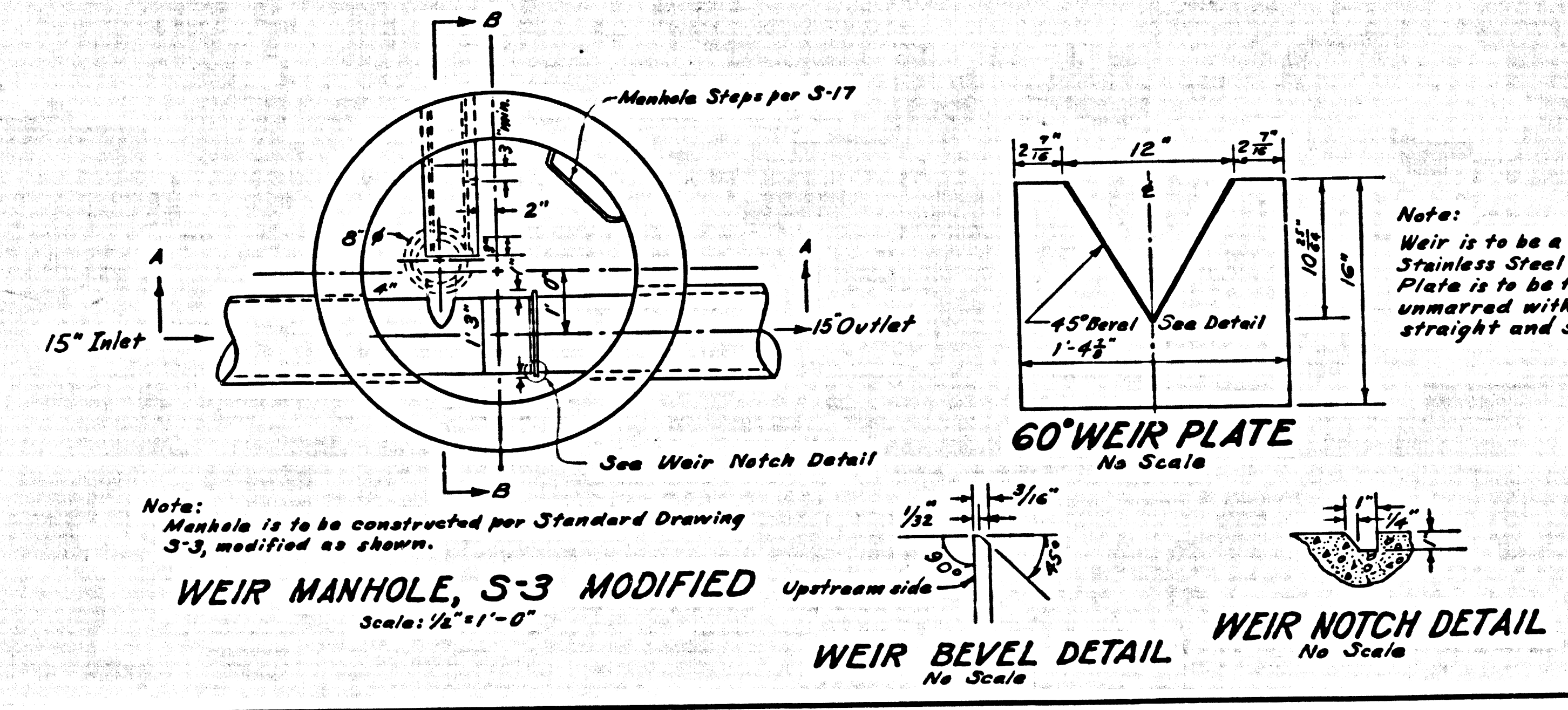
C.C. 8193

VOID

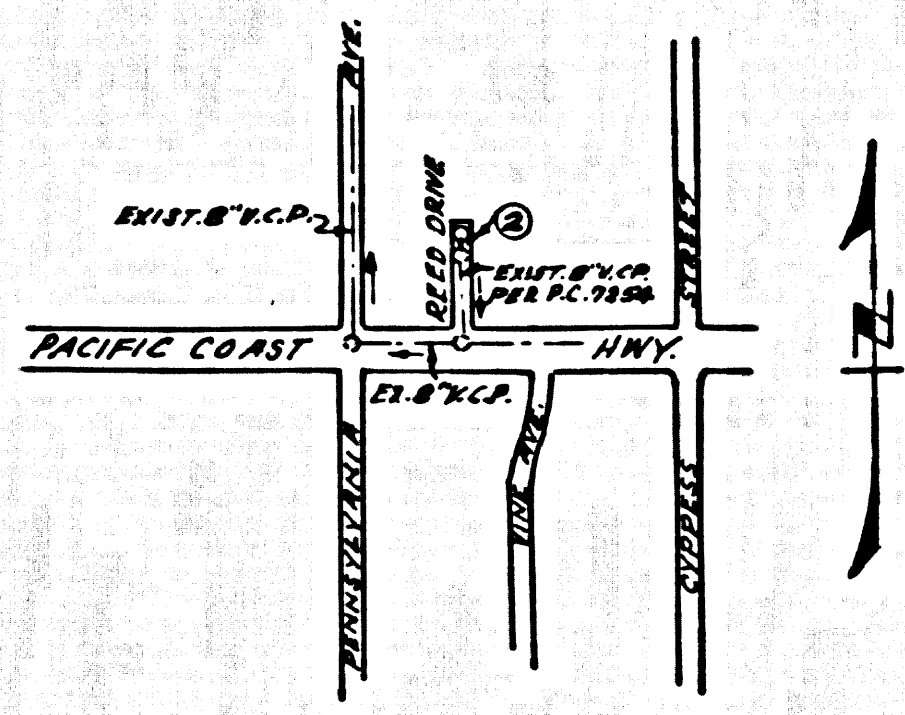


Not this Contract

VOID



B.M. SY 3530A ELEV. 131.649  
 1/4 IN. NORTH CURB PACIFIC COAST HWY.  
 2 1/2 FT. N. OF CURB RETURN AT N.W. COR.  
 PACIFIC COAST HWY. & CYPRESS ST.  
 BASE LINE QUAD. 1955



INDEX MAP  
 P.C. 8194  
 SCALE: 1" = 600'

County Sanitation Districts shall be notified prior to the following so that required inspection can be made (Phone 368-2027 - 634-8097)

Acceptance of the project.

NO CONNECTIONS FOR THE DISPOSAL OF INDUSTRIAL WASTES SHALL BE MADE TO SEWERS EXCEPT AS SHOWN ON THESE DRAWINGS WITHOUT WRITTEN PERMISSION FROM THE CITY ENGINEER AND GENERAL MANAGER OF THE COUNTY SANITATION DISTRICTS.

CITY OF LOMITA BLDG. DIST. NO. 12.04

- NOTES:
1. PROVIDE STAKES ON THE PROPERTY LINE OR PROPERTY LINES PRODUCED AT RIGHT ANGLES TO THE SEWER LINE AT THE CENTER LINE OF EACH MANHOLE.
  2. NO REPRESENTATIVE OF THE CITY ENGINEER WILL SURVEY OR LAY OUT ANY PORTION OF THE WORK.
  3. THE PRIVATE ENGINEER SHALL FURNISH THE CITY ENGINEER WITH GRADE SHEETS AND STATIONINGS FOR ALL HOUSE LATERALS AND "T" OR "Y" BRANCHES AND SHALL PROVIDE STAKES FOR THESE AT THEIR PROPER LOCATIONS WITH STATIONING PLAINLY MARKED. ALL HOUSE LATERALS SHALL BE CONSTRUCTED IN A STRAIGHT ALIGNMENT AT RIGHT ANGLES FROM THE MAIN LINE SEWER EXCEPT AS SHOWN ON THE PLANS. HOUSE LATERALS FROM CHIMNEYS SHALL NOT HAVE AN ANGLE OF LESS THAN 45° WITH THE MAIN LINE SEWER. ANY CHANGE IN ALIGNMENT SHALL BE REQUESTED BY WRITING BY THE PRIVATE ENGINEER.
  4. THE PRIVATE ENGINEER SHALL FURNISH THE HOUSE LATERAL DEPTH AT THE PROPERTY LINE BELOW THE TOP OF CURB ELEVATION FOR EACH HOUSE LATERAL ON THE GRADE SHEET.
  5. NO REVISIONS SHALL BE MADE IN THESE PLANS WITHOUT THE APPROVAL OF THE CITY ENGINEER.
  6. THE CONTRACTOR SHALL NOTIFY THE CONSTRUCTION DIVISION BY TELEPHONE, HOURS 9-4, EST. 815H, AT LEAST TWENTY-FOUR HOURS BEFORE STATING ANY WORK UNDER THIS CONTRACT.
  7. ALL STRUCTURES SHALL BE EITHER BRICK MANHOLES PER S-3 OR PRECAST CONCRETE MANHOLES PER S-4, OR S-4, EXCEPT AS NOTED.
  8. "T" OR "Y" BRANCHES MAY BE USED FOR CONNECTIONS TO MAINLINE SEWERS EXCEPT AS NOTED.
  9. MANHOLE TOPS IN UNIMPROVED AREAS MAY BE 18 INCHES ABOVE FINISHED GRADE.
  10. USE EXTRA STRENGTH PIPE. ALL PIPE IS STANDARD UNLESS NOTED OTHERWISE.
  11. VITRIFIED CLAY PIPE JOINTS SHALL BE TYPE "D", "H", OR "K" PER S.T. SPEC. SEC. 208-B.
  12. IN A POWER POLE IS WITHIN THREE FEET OF THE SEWER, THE SEWER SHALL BE ENCASED, PER S-23, TWO FEET ON EACH SIDE FROM THE POINT OF INTERFERENCE.
  13. IN FINISHING THE COURSE OF CONSTRUCTION IT IS DETERMINED THAT THERE IS LESS THAN FOUR FEET OF COVER OVER THE TOP OF A MAIN LINE OR HOUSE LATERAL V.C.P. SEWER WHICH IS NOT INDICATED ON THE PLANS, THE PIPE SHALL BE ENCASED PER S-23, UNLESS OTHERWISE APPROVED BY THE CITY ENGINEER.
  14. HOUSE LATERALS TO BE CONSTRUCTED WITH INVERTS AT PROPERTY LINE 6 FEET BELOW SURFACE UNLESS OTHERWISE NOTED.
  15. RESURFACE ALL TRENCHES WITHIN PAVED AREAS TO MEET L.A. COUNTY ROAD DEPT. OR CALIFORNIA STATE HIGHWAY REQUIREMENTS IN ACCORDANCE WITH PERMITS.
  16. SEWERS TO BE TESTED FOR LEAKAGE PER SECTION 304-237, STANDARD SPECIFICATIONS.
  17. REFER TO SECTION 7-10-2-1 OF THE STANDARD SPECIFICATIONS, REGARDING SANITARY ORDERS. THE FOLLOWING CITY ENGINEER STANDARD PLANS APPLY TO THIS PROJECT:

LEGEND

MINIMUM DEVIATION SAFETY REQUIREMENT	S-1
BRICK MANHOLE	S-3
NON-REINFORCED PRECAST CONCRETE MANHOLE	S-4
REINFORCED PRECAST CONCRETE MANHOLE	S-5
MANHOLE FRAME & COVER	S-5
MANHOLE STEPS	S-7
LOADING FOR SLEIGH PIPE	S-8
CRADLING AND ENCASEMENT	S-23
WIRE AND CABLE ENCASEMENT	S-26
STOPPERS	S-30
ALLOWABLE TRENCH WIDTH	S-33

COLLECT CHARGES AS INDICATED

NOTICE TO CONTRACTOR

The existence and location of any underground utility pipes or structures shown on these plans are obtained by a search of the available records. To the best of my knowledge there are no existing utilities except as shown on these plans. The contractor is required to take due precautionary measures to protect the utility lines shown and any other lines not of record or not shown on these plans.

W.C.E.

PROFILE, ALIGNMENT AND GRADE OF  
 SANITARY SEWERS PAGE 1  
 TO BE CONSTRUCTED IN

REED DRIVE  
 PRIVATE CONTRACT NO. 8194

W.S. 27  
 1 SHEET, 2 PAGES

SCALE: VERT. 1" = 4' HORIZ. 1" = 40'

PREPARED IN THE OFFICE OF  
 J. H. EDWARDS CO.  
 1048 S. GARDEN ST.  
 LOS ANGELES, CALIF. 90015  
 REG. C. E. NO. 11302

40603

FOR LEGEND SEE PLAN NO. S-1

NOTE: THE PUBLIC WORKS CONSTRUCTION AND CITY ENGINEER SPECIAL PERMITS DATED FEB. 15, 1968, AS REVISED, GRANT THE CITY OF LOMITA THE RIGHT TO CONDUCT SURVEYS, CENTER LINE OF STREETS, OR CENTER LINE OF ALLEYS AND PROVIDE GRADE POINTS FOR TOP OF CURBS, ELEVATIONS AND IN FEET ABOVE M.S.C. & S.L. SEA LEVEL, DATUM OF 1929. THIS DRAWING AND THE DATA HEREON ARE HEREBY MADE A PART OF THE SPECIFICATIONS. BEFORE WORK CAN BE STARTED, THE CONTRACTOR MUST OBTAIN A PERMIT TO EXCAVATE IN CITY STREETS FROM THE L.A. COUNTY ROAD DEPT., DISTRICT OFFICE NO. 3, AND PAY A FEE TO THE CITY ENGINEER, CITY OF LOMITA. CONSTRUCTION INSPECTION AND RECORD PLANS. APPROVAL OF THIS PLAN BY THE CITY OF LOMITA DOES NOT CONSTITUTE A REPRESENTATION AS TO THE ACCURACY OF THE LOCATION OF OR THE EXISTENCE OR NON-EXISTENCE OF ANY UNDERGROUND UTILITY PIPE, OR STRUCTURE WITHIN THE LIMITS OF THIS PROJECT. THIS NOTE APPLIES TO ALL PAGES. IF WORK IS TO BE DONE IN A STATE HIGHWAY, A PERMIT MUST BE OBTAINED FROM THE STATE OF CALIFORNIA, DIVISION OF HIGHWAYS, THE SOUTH BRANCH STREET, LOS ANGELES, CALIFORNIA.

CITY OF LOMITA, CALIFORNIA  
 JOHN A. LAMBIE, CITY ENGINEER J. D. PARKHURST, CHIEF ENGINEER  
 CO. SEAL NO. 25  
 APPROVED BY: [Signature] REGIONAL ENGINEER APPROVED BY: [Signature] OFFICE ENGINEER

CHECKED BY: [Signature] 10/29/68  
 REG. L.E. NO. 10653

COLLECT CHARGES AS INDICATED

40604

