

B.M. B.L. 65 ELEV. 2391.642
 C.S. MONUMENT IN WELL @ INTERSECTION
 AVENUE J AND 5TH STREET EAST, MKD
 (7 1/4 N, R 12 W 1/4 COR. 14-23 EAST EDGE)
 LANCASTER QUAD. 19 65

REVISION No 1 DATE: NOV. 9, 1963

DELETED SEWER BETWEEN 10TH ST. EAST & SEWER R/W.
 REROUTED SEWER OUTLET TO ANDALE AVE. & PANDERA ST.
 REVISED PIPE SIZE TO 8" - WITHDRAWN REIMBURSEMENT CLAIM.

APPROVED BY: *Richard J. Kopycky* DATE: 11-18-63
 CHIEF ENGINEER, COUNTY ENGINEER, R.E. NO. 16742

APPROVED BY: *J. Posthumus*
 FOR: CHIEF ENGINEER, COUNTY SANITATION DISTRICT NO. 14

LANCASTER BLDG. DIST. NO. 8

PROFILE ALIGNMENT AND GRADE OF
 SANITARY SEWERS P.C. 8202
 CONSTRUCTED IN PAGE 1

TRACT NO. 28587

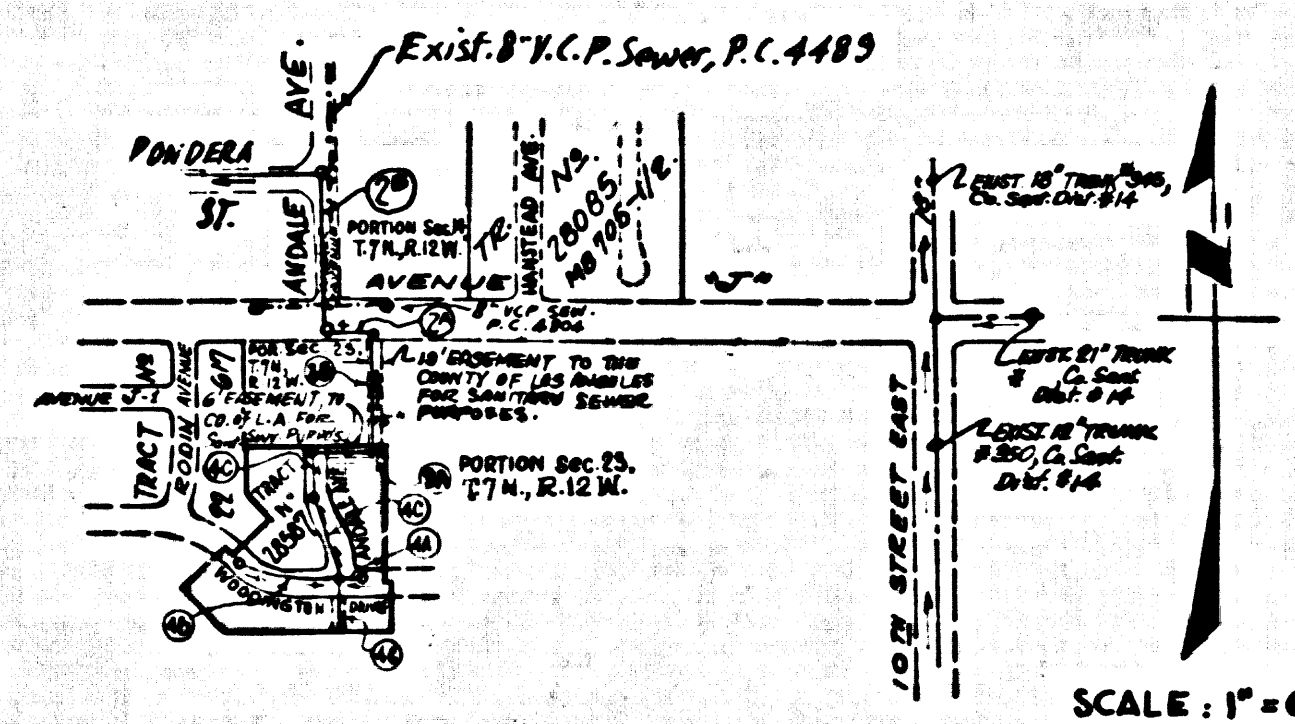
PRIVATE CONTRACT NO. 8202

W.S. 70
 2 SHEETS; 4 PAGES

SCALE: VERT. 1" = 6' NOVEMBER, 1963
 HORIZ. 1" = 40'

PREPARED IN THE OFFICES OF
 CONSOLIDATED ENGINEERING CO.
 8845 OLYMPIC BLVD., BEVERLY HILLS, CALIFORNIA
 BY: *Enrique Nevada* REG. C. E. NO. 11813

FOR LEGEND SEE PLAN NO. S-1



INDEX MAP
 SCALE: 1" = 600'
 RC. 8202
 TRACT NO. 28587

County Sanitation Districts shall be notified prior to the following so that required inspection can be made (Items 5-7-10-23 = 4-6-8-9-9-9)

Acceptance of the project.

No connections for the disposal of industrial wastes shall be made to sewers shown on these drawings without written permission from the Chief Engineer and General Manager of the County Sanitation Districts.

- NOTES:
1. PROVIDE STAKES ON THE PROPERTY LINE OR PROPERTY LINES PRODUCED AT RIGHT ANGLES TO THE SEWER LINE AT THE CENTER LINE OF EACH MANHOLE.
 2. NO REPRESENTATIVE OF THE COUNTY ENGINEER WILL SURVEY OR LAY OUT ANY PORTION OF THE WORK.
 3. THE PRIVATE ENGINEER SHALL FURNISH THE COUNTY ENGINEER WITH GRADE SHEETS AND STATIONING FOR ALL HOUSE LATERALS AND "T" OR "Y" BRANCHES AND SHALL PROVIDE STAKES FOR THEM AT THEIR PROPER LOCATIONS WITH STATIONING PLAINLY MARKED. ALL HOUSE LATERALS SHALL BE CONSTRUCTED IN A STRAIGHT ALIGNMENT AT RIGHT ANGLES FROM THE MAIN LINE SEWER EXCEPT AS SHOWN ON THE PLANS. HOUSE LATERALS FROM CHIMNEYS SHALL NOT HAVE AN ANGLE OF LESS THAN 45° WITH THE MAIN LINE SEWER. ANY CHANGE IN ALIGNMENT SHALL BE REQUESTED IN WRITING BY THE PRIVATE ENGINEER.
 4. THE PRIVATE ENGINEER SHALL FURNISH THE HOUSE LATERAL DEPTH AT THE PROPERTY LINE BELOW THE TOP OF CURB ELEVATION FOR EACH HOUSE LATERAL ON THE GRADE SHEET.
 5. NO REVISIONS SHALL BE MADE IN THESE PLANS WITHOUT THE APPROVAL OF THE COUNTY ENGINEER.
 6. THE CONTRACTOR SHALL NOTIFY THE CONSTRUCTION DIVISION BY TELEPHONE, MADISON 9-470, EXT. 8153, AT LEAST TWENTY-FOUR HOURS BEFORE STARTING ANY WORK UNDER THIS CONTRACT.
 7. ALL STRUCTURES SHALL BE EITHER BRICK MANHOLES PER S-3 OR PRECAST CONCRETE MANHOLES PER S-4 OR S-4, EXCEPT AS NOTED.
 8. "T" OR "Y" BRANCHES MAY BE USED FOR CONNECTIONS TO ABUJANE SEWERS ONLY AS NOTED.
 9. MANHOLE TOPS IN UNIMPROVED RIGHTS-OF-WAY TO BE SIX INCHES ABOVE FINISHED GRADE.
 10. USE EXTRA STRENGTH PIPE, ALL PIPE IS SHOWED DEPTH EXCEPT AS NOTED.
 11. WYREFORED CLAY PIPE UNITS SHALL BE TYPE "C", "P", OR "E" OF THE STANDARD SPECIFICATIONS SECTION E06-E.
 12. IF A POWER POLE IS WITHIN THREE FEET OF THE SEWER, THE SEWER SHALL BE ENCASED, PER S-23, TWO FEET ON EACH SIDE FROM THE POINT OF INTERFERENCE.
 13. IF DURING THE COURSE OF CONSTRUCTION IT IS DETERMINED THAT THERE IS LESS THAN FOUR FEET OF COVER OVER THE TOP OF A MAIN LINE OR HOUSE LATERAL Y.C.P. SEWER WHICH IS NOT INDICATED ON THE PLANS, THE PIPE SHALL BE ENCASED PER S-23, UNLESS OTHERWISE APPROVED BY THE COUNTY ENGINEER.
 14. HOUSE LATERALS TO BE CONSTRUCTED WITH INVERTS AT PROPERTY LINE 4 FEET BELOW CURB GRADE.
 15. RESURFACE ALL TRENCHES WITHIN PAVED AREAS TO MEET L.A. COUNTY ROAD DEPT. REQUIREMENTS IN ACCORDANCE WITH PERMITS.
 16. SEWERS TO BE TESTED FOR LEAKAGE PER SECTION 206-2.2.7 UNIFORM STANDARD SPECIFICATIONS.
 17. ALL STATE AND LOCAL TRENCH SAFETY ORDERS SHALL BE OBTAINED WITH PIPE SPECIFICATIONS SECTION 7-10-4-1.
 18. SPECIAL BRANCHES OR BRANCHINGS - NONE
 19. TO SAGRAL BRANCH AND REPLACE OTHER SAGRAL - REMOVED SO AS TO ACHIEVE THE NATURAL OR FINISHED GRADE AND SLOPE - SHOWN ON THE GRADING PLAN - APPROVED FOR THIS TRACT BY THE SUBDIVIDER AND SAFETY DIVISION
 20. TO SAGRAL BRANCH AND SAGRAL REMOVED - SHALL BE COMPLETED PRIOR TO COMMENCEMENT OF PIPE CONSTRUCTION PER S-4-S-14-14-14
 21. TO SAGRAL BRANCH AND SAGRAL REMOVED - SHALL BE COMPLETED PRIOR TO COMMENCEMENT OF PIPE CONSTRUCTION PER S-4-S-14-14-14
 22. TO SAGRAL BRANCH AND SAGRAL REMOVED - SHALL BE COMPLETED PRIOR TO COMMENCEMENT OF PIPE CONSTRUCTION PER S-4-S-14-14-14
 23. TO SAGRAL BRANCH AND SAGRAL REMOVED - SHALL BE COMPLETED PRIOR TO COMMENCEMENT OF PIPE CONSTRUCTION PER S-4-S-14-14-14
- THE FOLLOWING COUNTY ENGINEER STANDARD PLANS APPLY TO THIS PROJECT:
- | | |
|---|------|
| LEGEND | S-1 |
| MINIMUM EXCAVATION SAFETY REQUIREMENTS | S-2 |
| PRECAST MANHOLE | S-3 |
| NON-REINFORCED PRECAST CONCRETE MANHOLE | S-4 |
| REINFORCED PRECAST CONCRETE MANHOLE | S-5 |
| MANHOLE FRAMES AND COVERS | S-10 |
| MANHOLE STEPS | S-11 |
| BEDDINGS FOR SEWER PIPE | S-17 |
| ENCASEMENT AND ENCASING | S-20 |
| WYE OF THE SUPPORT | S-25 |
| CHIMNEY PIPE AND BASE | S-27 |
| ALLOWABLE TRENCH WIDTHS | S-33 |

NOTE:
 GRADES TO WHICH THIS IMPROVEMENT IS TO BE CONSTRUCTED ARE SHOWN ON PLANS AND PROFILES. GRADE POINTS FOR TOP OF CURB, CENTER LINE OF STREETS, OR CENTER LINE OF ALLEYS ARE SHOWN BY CIRCLES ON PROFILES. AT ALL POINTS BETWEEN DESIGNATED POINTS THE GRADE SHALL BE ESTABLISHED SO AS TO CONFORM TO A STRAIGHT LINE DRAWN BETWEEN SAID DESIGNATED POINTS. ELEVATIONS ARE IN FEET ABOVE U.S.C. & G.S. SEA LEVEL DATUM OF 1929.

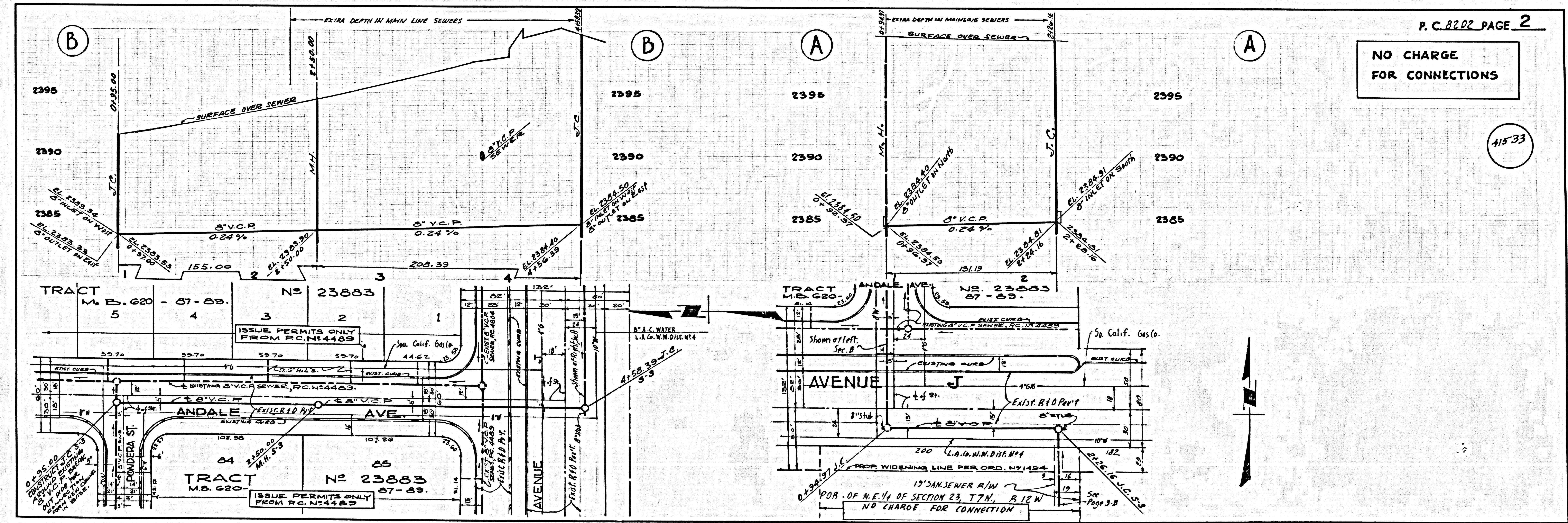
WORK SHALL BE CONSTRUCTED ACCORDING TO THE STANDARD SPECIFICATIONS AND GENERAL PROVISIONS FOR THE CONSTRUCTION OF SANITARY SEWERS - 1963, AS REVISED, AND SHALL BE PROTECTED ONLY IN THE PRESENCE OF THE COUNTY ENGINEER.
 EACH WORK CAN BE STARTED, THE CONTRACTOR MUST OBTAIN A PERMIT TO EXCAVATE IN COUNTY STREETS FROM THE L.A. COUNTY ROAD DEPT., DISTRICT OFFICE NO. 25, AND PAY A FEE TO THE COUNTY ENGINEER, ROOM 330, COUNTY ENGINEERING BUILDING, 106 WEST SECOND STREET OF 107222-2844. - REGIONAL OFFICE, SUFFICIENT TO COVER THE COST OF CONSTRUCTION INSPECTION AND RECORD PLANS.
 APPROVAL OF THIS PLAN BY THE COUNTY OF LOS ANGELES DOES NOT CONSTITUTE A REPRESENTATION AS TO THE ACCURACY OF THE LOCATION OF OR THE EXISTENCE OR NON-EXISTENCE OF ANY UNDERGROUND UTILITY PIPE, OR STRUCTURE WITHIN THE LIMITS OF THIS PROJECT. THIS NOTE APPLIES TO ALL PAGES.

COUNTY OF LOS ANGELES, CALIFORNIA
 JOHN A. LAMBE, COUNTY ENGINEER J. D. PARKHURST, CHIEF ENGINEER
 CO. SAN. DIST. NO. 14
 APPROVED BY: *John A. Lamb* 7-11-63 APPROVED BY: *J. D. Parkhurst* 7-11-63
 REGIONAL ENGINEER OFFICE ENGINEER

CHECKED BY: *Richard J. Kopycky* 7-11-63
 REG. C. E. NO. 16742 (DATE)

COLLECT CHARGES
 AS INDICATED

J.N. 0250.02



NO CHARGE
 FOR CONNECTIONS

P. C. 8202 PAGE 2
 41533

