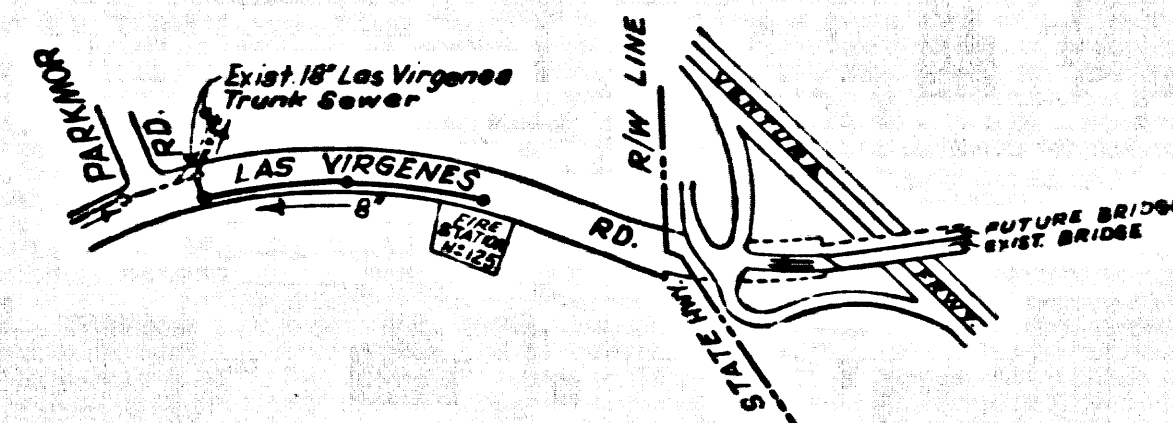


L.A. CO. RD. DEPT.
 B.M. 311.57, 5588 ELEV. 770.859
 1 1/2 IN. CONC. BASE OF LIGHT STAND (Flood
 Lights) in Park Lot of Billingsley's Steak
 Ranch 139' N 1/4 320' S of Int. Ventura Blvd.
 & Las Virgenes Rd.
 MALIBU 1960



INDEX MAP
 Scale: 1"=500'
 C.C. 8203



CALABASAS BUILDING DISTRICT No. 9.1

PAGE 1
 CASH CONTRACT NO. 8203
 CAPITAL PROJECT NO. 7508.02

PROFILE, ALIGNMENT AND GRADE OF
 SANITARY SEWERS
 TO SERVE

FIRE STATION No. 125

1 SHEET, 2 PAGES

SCALE VERT. 1"=4'
 HORIZ. 1"=20'

APRIL 1969

COUNTY OF LOS ANGELES, CALIFORNIA

JOHN A. LAMBIE COUNTY ENGINEER
 LAS VIRGENES MUNICIPAL WATER DISTRICT

APPROVED BY *[Signature]* 4-21-69
 ASST. SANITATION ENGINEER

REVIEWED BY *[Signature]*
 SEWER MAINT. Supt.

DESIGNED BY *[Signature]*
 REG. C. E. NO. 13132

NOTES:
 WORK SHALL BE CONSTRUCTED ACCORDING TO THE STANDARD SPECIFICATIONS
 FOR PUBLIC WORKS CONSTRUCTION AND SPECIAL PROVISIONS FOR THE CONSTRUCTION OF SANITARY SEWERS DATED JAN. 2,
 1969, AS REVISED AND SHALL BE PROVIDED ONLY IN THE PRESENCE OF THE COUNTY ENGINEER.
 GRADES TO WHICH THIS IMPROVEMENT IS TO BE CONSTRUCTED ARE SHOWN ON PLANS AND PROFILE GRADE POINTS FOR TOP
 OF CURB, CENTER LINE OF STREET OR CENTER LINE OF ALLEY ARE SHOWN BY CIRCLES ON PROFILES AT ALL POINTS BETWEEN DESIGNATED
 POINTS THE GRADE SHALL BE ESTABLISHED SO AS TO CONFORM TO A STRAIGHT LINE DRAWN BETWEEN SAID DESIGNATED
 POINTS.
 ELEVATIONS ARE IN FEET ABOVE U.S.C. & G.S. MEAN LEVEL DATUM OF 1929.

THIS DRAWING AND THE DATA HEREON ARE HEREBY MADE A PART OF THE SPECIFICATIONS.

LAYOUT	Gonzales-Rubio	11-18-68	UNDERGROUND	Scott
TRACED	Gonzales-Rubio	11-18-68	BENCH MARKS	Bowles
CHECKED	Webster	11-25-68	MAINTENANCE	Pearson
F.B.	3138, 2834		INSPECTOR	
A.B.		W.S. 90	RECORD PLANS	

USE EXTRA STRENGTH PIPE. ALL PIPE IS STANDARD DEPTH EXCEPT AS NOTED.
 ALL STRUCTURES SHALL BE BRICK MANHOLES, PER 3-5
 USE STANDARD MANHOLE FRAMES AND COVERS, PER 3-5
 SEWERS TO BE TESTED FOR LEAKAGE PER SECTION 300-2.1.7 OF THE STANDARD SPECIFICATIONS AND SPECIAL PROVISIONS.
 CONTRACT HOUSE LATERALS WITH INVERTS AT PROPERTY LINE 6 FEET BELOW CURB GRADE, OR GRADE OF CENTER LINE OF STREET,
 EXCEPT AS NOTED.
 VITRIFIED CLAY PIPE JOINTS SHALL BE TYPE "B", "D" OR "E", PER SECTION 300-2 OF STANDARD SPECIFICATIONS.
 REFER TO SECTION 7-10.4.1 OF THE STANDARD SPECIFICATIONS, REGARDING SAFETY DEVICES.

ALL HOUSE LATERALS SHALL BE CONSTRUCTED IN A STRAIGHT ALIGNMENT AT RIGHT ANGLES FROM THE MAIN LINE SEWER EXCEPT AS
 SHOWN ON THE PLANS. HOUSE LATERALS FROM CHIMNEYS SHALL NOT HAVE AN ANGLE OF LESS THAN 45 DEGREES WITH THE MAIN
 LINE SEWER.
 THE CONTRACTOR SHALL NOTIFY THE CONSTRUCTION DIVISION BY TELEPHONE MADISON 9-4707, EXT. 31551 AT LEAST 24 HOURS BEFORE
 STARTING ANY WORK UNDER THIS CONTRACT.
 THE CONTRACTOR SHALL SECURE A FEE-EXEMPT CONSTRUCTION PERMIT FROM THE COUNTY ENGINEER BEFORE
 STARTING SEWER CONSTRUCTION. APPLICATION FOR THIS PERMIT IS TO BE MADE TO THE COUNTY ENGINEER,
 SANITATION DIVISION, ROOM 309, 108 WEST SECOND STREET, LOS ANGELES 12, CALIFORNIA.

RESURFACING SCHEDULE: RESURFACE TRENCH WITHIN PAVED AREA WITH AN ASPHALTIC CONCRETE (TYPE 1)
 3 INCHES THICK ON 12 INCHES OF CRUSHED AGGREGATE BASE SHALL BE CONSTRUCTED IN
 ACCORDANCE WITH SECTIONS 302-5 AND 301-2, RESPECTIVELY, OF STANDARD SPECIFICATIONS FOR
 PUBLIC WORKS CONSTRUCTION. THE REPAIR SHALL BE SEALED WITH RS-1 EMULSION AND HAS ROCK.
 A SOILS TEST IS NOT AVAILABLE FOR THIS PROJECT.

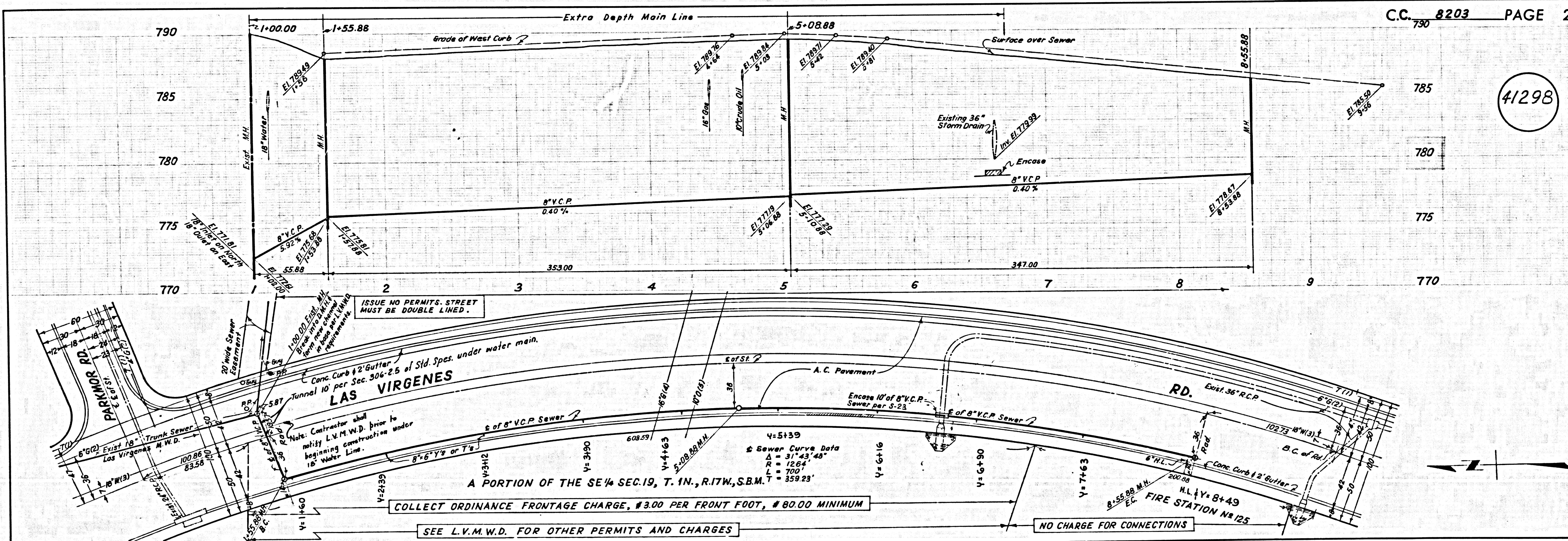
THE CONTRACTOR SHALL SECURE A FEE-EXEMPT ROAD PERMIT BEFORE STARTING CONSTRUCTION
 FROM THE COUNTY ROAD DEPARTMENT, 6530 W. 85TH ST., LOS ANGELES, CALIFORNIA.

ALL CONCRETE CURBS, GUTTERS, CURB, GUTTERS, AND DRIVEWAYS SHALL BE TUNNELED OR JACKED PER LOS ANGELES
 COUNTY ROAD DEPARTMENT REQUIREMENTS.
 THE FOLLOWING LATEST REVISED STANDARD PLANS ON FILE IN THE OFFICE OF COUNTY ENGINEER SHALL APPLY IN THE CONSTRUCTION
 OF THIS PROJECT:

SEWERS	3-5
MANHOLES	3-5
BRICK MANHOLE	3-5
MANHOLE FRAME AND COVER	3-5
MANHOLE STOP	3-7
REINFORCING FOR SEWER PIPE	3-21
SPECIAL SUPPORT AND PROTECTION	3-23
CRADLING AND BRACING	3-23
STANDARD WYE SUPPORT	3-26
STOPPERS	3-30
ALLOWABLE TRENCH WIDTHS	3-33

- THE UNDERGROUND UTILITY COMPANIES WITHIN THE LIMITS OF THIS PROJECT ARE AS FOLLOWS:
- The Pacific Tel & Tel Co.
 - Southern California Gas Co.
 - Los Virgenes Municipal Water District
 - Pacific Lighting Gas Supply Co.
 - Shell Oil Co.

COLLECT CHARGES
 AS INDICATED



C.C. 8203 PAGE 2

41298

COLLECT ORDINANCE FRONTAGE CHARGE, \$3.00 PER FRONT FOOT, \$80.00 MINIMUM

SEE L.V.M.W.D. FOR OTHER PERMITS AND CHARGES

NO CHARGE FOR CONNECTIONS

