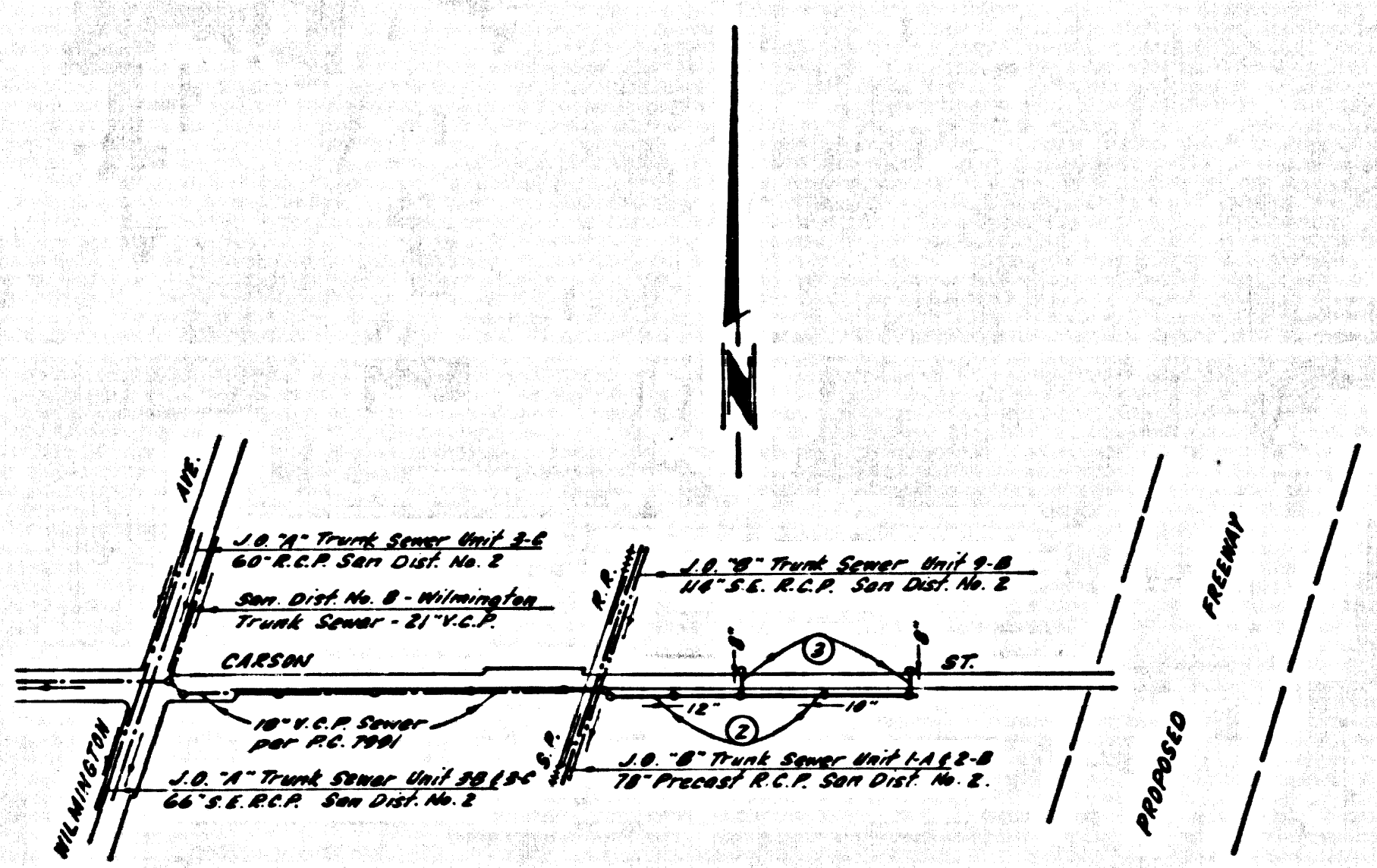


B.M. 7124 ELEV. 22.191
 ROAD No. 2, curb 1/4 E. of C.R. of
 The E.E. San of Wilmington Ave. & Carson
 St. 45 N. S. & 75 N. E. of E. Int.
GARDENA QUAD. 1965

- THE FOLLOWING LATEST REVISED STANDARD PLANS OUTLIE IN THE OFFICE OF THE COUNTY ENGINEER SHALL APPLY IN THE CONSTRUCTION OF THIS PROJECT.
- LEGEND
 - MINIMUM EXCAVATION SAFETY REQUIREMENTS S-1
 - BRICK MANHOLE S-2
 - NON-REINFORCED PRECAST CONCRETE MANHOLE S-3
 - REINFORCED PRECAST CONCRETE MANHOLE S-4
 - SPAWN MANHOLE S-5
 - MANHOLE FRAME AND COVER S-6
 - STANDARD MANHOLE STEP S-7
 - BEDDING FOR SEWER PIPE S-8
 - STOPPER S-9
 - ALLOWABLE TRENCH WIDTHS S-10
 - CRADLING AND ENCASEMENT S-11



INDEX MAP
SCALE 1"=600'

County Sanitation Districts shall be notified prior to the following as that required inspection can be made (Phone 629-2022 or 629-5097)

Acceptance of the project.

Revision No. 1
 Add 3ft. of steel casing - Page 2 & 4
 Approved: *[Signature]*
 Office of County Engineer, 2/16/70

No connections for the disposal of industrial wastes shall be made to sewers shown on these drawings without written permission from the Chief Engineer and General Manager of the County Sanitation Districts.

DOUBLE SCALE
LOMITA BLDG. DIST. NO. 12

PROFILE, ALIGNMENT AND GRADE OF **P.C. 8204**
SANITARY SEWERS PAGE 1
 TO BE CONSTRUCTED IN

CARSON STREET

PRIVATE CONTRACT NO. 8204

W.S. 30
 2 SHEETS, 6 PAGES
 SCALE: VERT. 1"=4' AS NOTED OCTOBER, 1968

PREPARED BY THE OFFICES OF
H.M. SCOTT & ASSOCIATES, INC.

[Signature]
 REG. C. E. NO. 1735A

FOR LEGEND SEE PLAN NO. S-1

- NOTES:
- PROVIDE STAKES ON THE PROPERTY LINE OR PROPERTY LINES PRODUCED AT RIGHT ANGLES TO THE SEWER LINE AT THE CENTER LINE OF EACH MANHOLE.
 - NO REPRESENTATIVE OF THE COUNTY ENGINEER WILL SURVEY OR LAY OUT ANY PORTION OF THE WORK.
 - THE PRIVATE ENGINEER SHALL FURNISH THE COUNTY ENGINEER WITH GRADE SHEETS AND STATIONING FOR ALL HOUSE LATERALS AND "T" BRANCHES AND SHALL PROVIDE STAKES FOR THEM AT THE PROPER LOCATIONS WITH STATIFYING PLAINLY MARKED. ALL HOUSE LATERALS SHALL BE CONSTRUCTED IN A STRAIGHT ALIGNMENT AT RIGHT ANGLES FROM THE MAIN LINE SEWER EXCEPT AS SHOWN ON THE PLANS. HOUSE LATERALS FROM CHIMNEYS SHALL NOT HAVE AN ANGLE OF LESS THAN 45° WITH THE MAIN LINE SEWER. ANY CHANGE IN ALIGNMENT SHALL BE REQUESTED IN WRITING BY THE PRIVATE ENGINEER.
 - THE PRIVATE ENGINEER SHALL FURNISH THE HOUSE LATERAL DEPTH AT THE PROPERTY LINE BELOW THE TOP OF CURB ELEVATION FOR EACH HOUSE LATERAL ON THE GRADE SHEET.
 - NO REVISIONS SHALL BE MADE IN THESE PLANS WITHOUT THE APPROVAL OF THE COUNTY ENGINEER.
 - THE CONTRACTOR SHALL NOTIFY THE CONSTRUCTION DEPARTMENT BY TELEPHONE, HARRISON 9-4247, EXT. 6180, AT LEAST TWENTY-FOUR HOURS BEFORE STARTING ANY WORK UNDER THIS CONTRACT.
 - ALL STRUCTURES SHALL BE EITHER BRICK MANHOLES PER S-3 OR PRECAST MANHOLES PER S-4 OR S-5, EXCEPT AS NOTED.
 - USE STANDARD MANHOLE FRAMES AND COVERS, S-6, EXCEPT AS NOTED.
 - MANHOLE TOPS IN UNIMPAVED RIGHTS-OF-WAY TO BE 22 INCHES ABOVE FINISHED GRADE.
 - USE EXTRA STRENGTH PIPE. ALL PIPE IS STANDARD DEPTH EXCEPT AS NOTED.
 - 1/4" R.A. SHOTS SHALL BE TYPE "D", "E", OR "F" PER STD. SPEC. SEC. 200-2.
 - IF A POWER POLE IS WITHIN THREE FEET OF THE SEWER, THE SEWER SHALL BE ENCASED, PER S-23, TWO FEET ON EACH SIDE FROM THE POINT OF INTERFERENCE.
 - IN BIDDING THE COURSE OF CONSTRUCTION IT IS DETERMINED THAT THERE IS LESS THAN FOUR FEET OF COVER OVER THE TOP OF A MAIN LINE OR HOUSE LATERAL V.C.P. SEWER WHICH IS NOT INDICATED ON THE PLANS, THE PIPE SHALL BE ENCASED PER S-23, UNLESS OTHERWISE APPROVED BY THE COUNTY ENGINEER.
 - HOUSE LATERALS TO BE CONSTRUCTED WITH INVERTS AT PROPERTY LINE 4 FEET BELOW CURB GRADE EXCEPT AS NOTED.
 - RESURFACE ALL TRENCHES WITHIN PAVED AREAS TO MEET L.A. COUNTY ROAD DEPT. OR CALIFORNIA STATE HIGHWAY REQUIREMENTS IN ACCORDANCE WITH PERMITS.
 - REBARS TO BE TESTED FOR LEACHAGE PER SECTION 204-2.1.7 OF THE STANDARD SPEC.
 - REFER TO SECTION 7-10.1.1 OF THE STANDARD SPEC., REGARDING SAFETY SIGNALS.
 - THE CONTRACTOR SHALL NOTIFY WIRE CARRIERS (P.W. 629-2022, EXT. 224) AT 50' CHALK OR 20' ONE SPECK PRIOR TO BEGINNING THIS CONSTRUCTION.
 - THE CONTRACTOR SHALL NOTIFY TELEPHONE CO. (PH. 629-2022) PRIOR TO CONSTRUCTION IN THE VICINITY OF THEIR FACILITIES.
 - THE CONTRACTOR SHALL NOTIFY THE METROPOLITAN WATER DISTRICTS' CHIEF CONSTRUCTION ENGINEER (PH. 629-2022, EXT. 224) AT LEAST 48 HOURS PRIOR TO CONSTRUCTION IN THE VICINITY OF MIWD FACILITIES.

NOTE: Issue no house connection permits until road widening is dedicated, P.C. 7234 has been accepted.

NOTICE TO CONTRACTOR

The existence and location of any underground utility pipes or structures shown on these plans are obtained by a search of the available records. To the best of my knowledge there are no existing utilities except as shown on these plans. The contractor is required to take due precautionary measures to protect the utility lines shown and any other lines not of record or not shown on these plans.

[Signature]
 H.C.E. NO. 10652

COLLECT CHARGES AS INDICATED

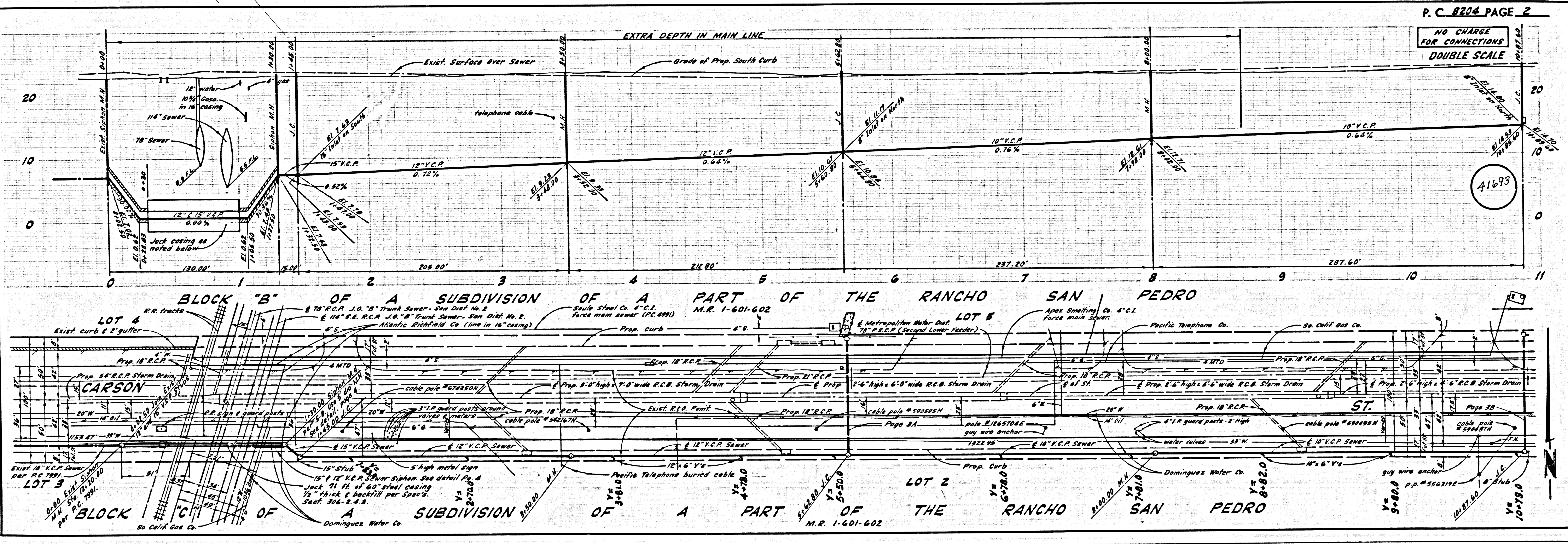
NOTE:
 GRADES TO WHICH THIS IMPROVEMENT IS TO BE CONSTRUCTED ARE SHOWN ON PLANS AND PROFILE. GRADE POINTS FOR TOP OF CURBS, CENTRE LINE OF STREETS, OR CENTRE LINE OF ALLEYS ARE SHOWN BY CIRCLES ON PROFILES. AT ALL POINTS BETWEEN DESIGNATED POINTS THE GRADE SHALL BE ESTABLISHED SO AS TO CONFORM TO A STRAIGHT LINE BETWEEN SAID DESIGNATED POINTS. ELEVATIONS ARE IN FEET ABOVE U.S.C. & G.S. SEA LEVEL, DATUM OF 1929. THE SHADING AND THE DATA HEREON ARE HEREBY MADE A PART OF THE SPECIFICATIONS. PRIVATE ENGINEERING AND SURVEYING FIRM SHALL BE CONSTRUCTED ACCORDING TO STANDARD SPECIFICATIONS FOR PUBLIC UTILITY ENGINEERING SPECIAL AREA AT 1957 AND SHALL BE PROSECUTED ONLY IN THE PRESENCE OF THE COUNTY ENGINEER. BEFORE WORK CAN BE STARTED, THE CONTRACTOR MUST OBTAIN A PERMIT TO EXCAVATE IN COUNTY STREETS FROM THE L.A. COUNTY ROAD DEPT., DISTRICT OFFICE NO. 2, AND PAY A FEE TO THE COUNTY ENGINEER, ROOM 102, COUNTY ENGINEERING BUILDING, 100 WEST SECOND STREET OR PALMS PLAZA - CENTINELLA TALLEY. REGIONAL OFFICE, IMPERIAL TO COVER THE COST OF CONSTRUCTION INSPECTION AND RECORD PLANS. APPROVAL OF THIS PLAN BY THE COUNTY OF LOS ANGELES DOES NOT CONSTITUTE A REPRESENTATION AS TO THE ACCURACY OF THE LOCATION OR OF THE EXISTENCE OR NON-EXISTENCE OF ANY UNDERGROUND UTILITY PIPE, OR STRUCTURE WITHIN THE LIMITS OF THE PROJECT. THIS NOTE APPLIES TO ALL PAGES. WORK IS TO BE DONE IN A STATE HIGHWAY. A PERMIT MUST BE OBTAINED FROM THE STATE OF CALIFORNIA, DIVISION OF HIGHWAYS, 120 SOUTH BRIDGE STREET, LOS ANGELES, CALIFORNIA.

COUNTY OF LOS ANGELES, CALIFORNIA
 JOHN A. LAMBIE, COUNTY ENGINEER J. D. PARKHURST, CHIEF ENGINEER
 CO. ENG. REG. NO. 8 CO. ENG. REG. NO. 8

APPROVED BY: *[Signature]* REGIONAL ENGINEER APPROVED BY: *[Signature]* OFFICE ENGINEER

CHECKED BY: *[Signature]* 1-28-69
 H.C.E. NO. 10652

APPROVED BY: *[Signature]* SEWER MAINTENANCE SUPERINTENDENT J.N. 0369.48

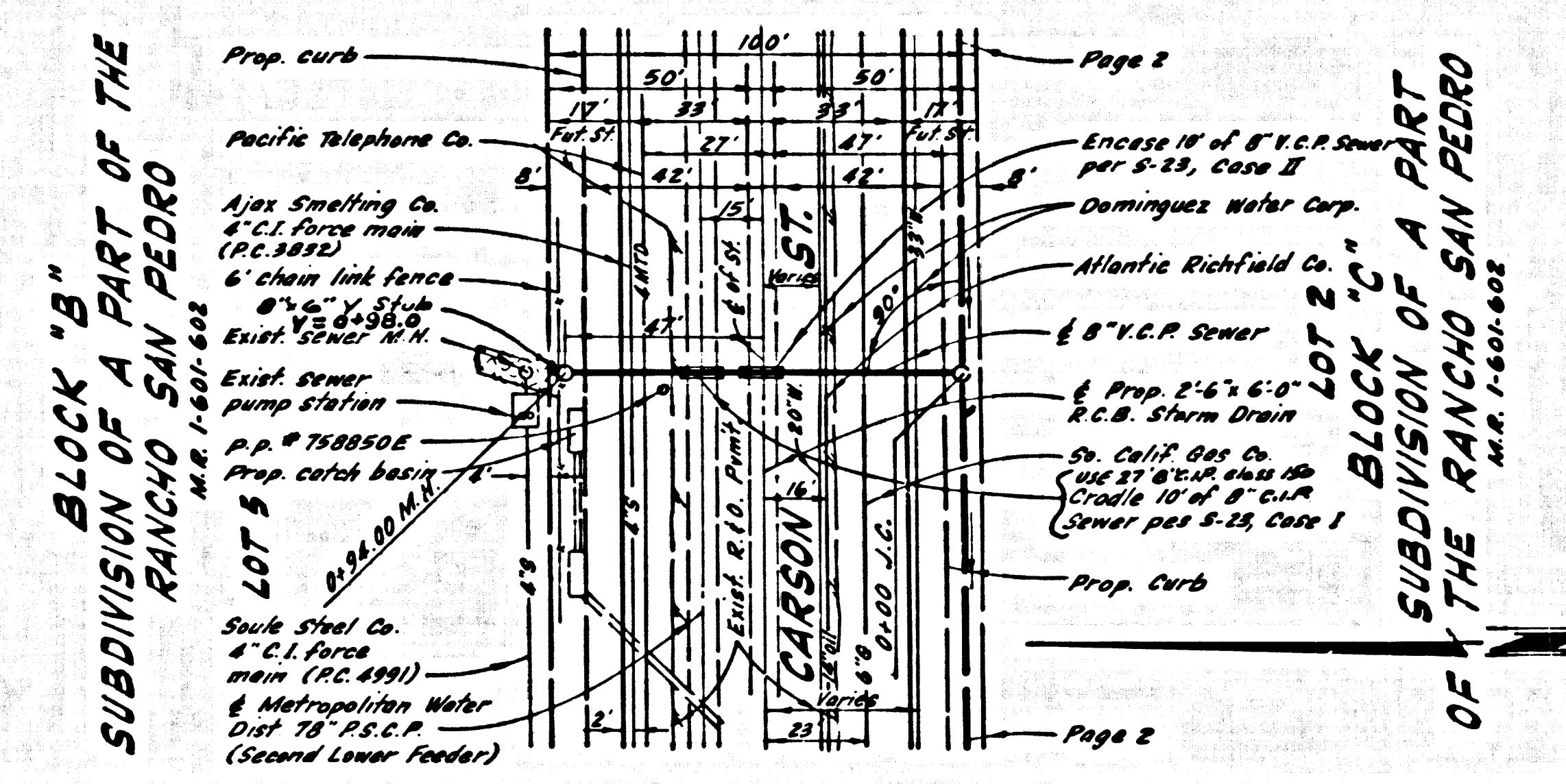
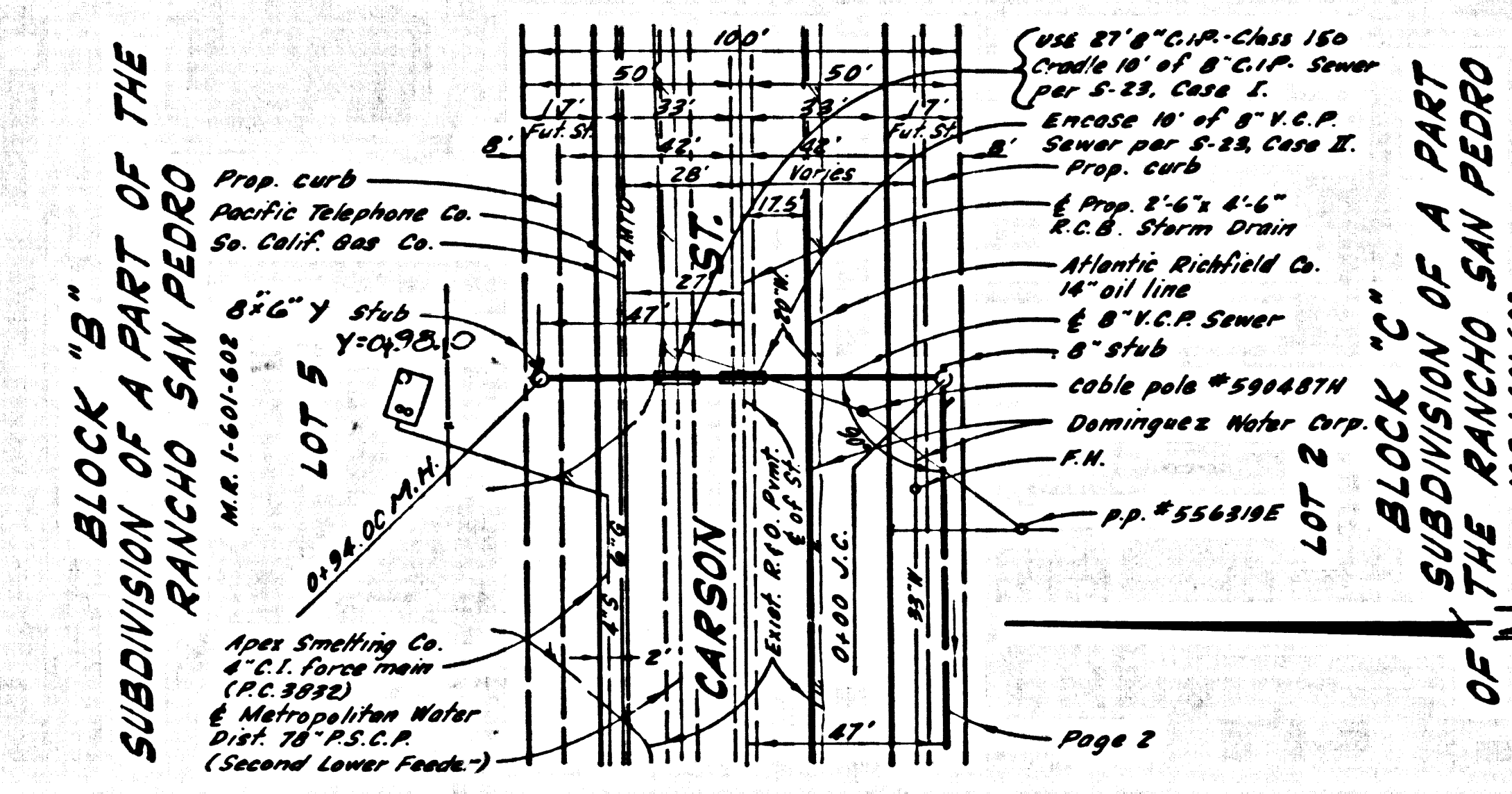
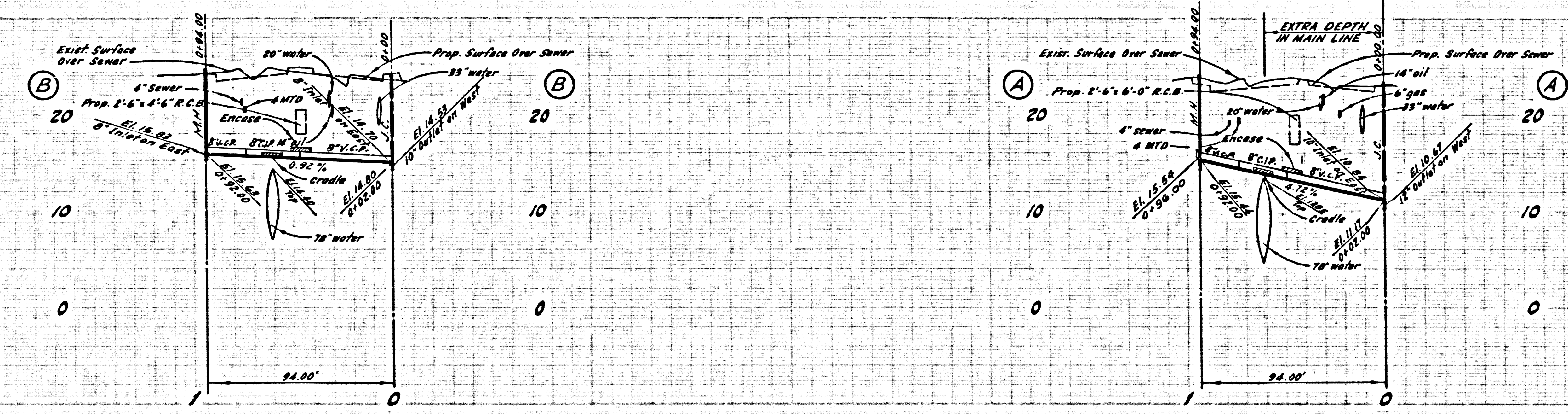


P.C. 8204 PAGE 2

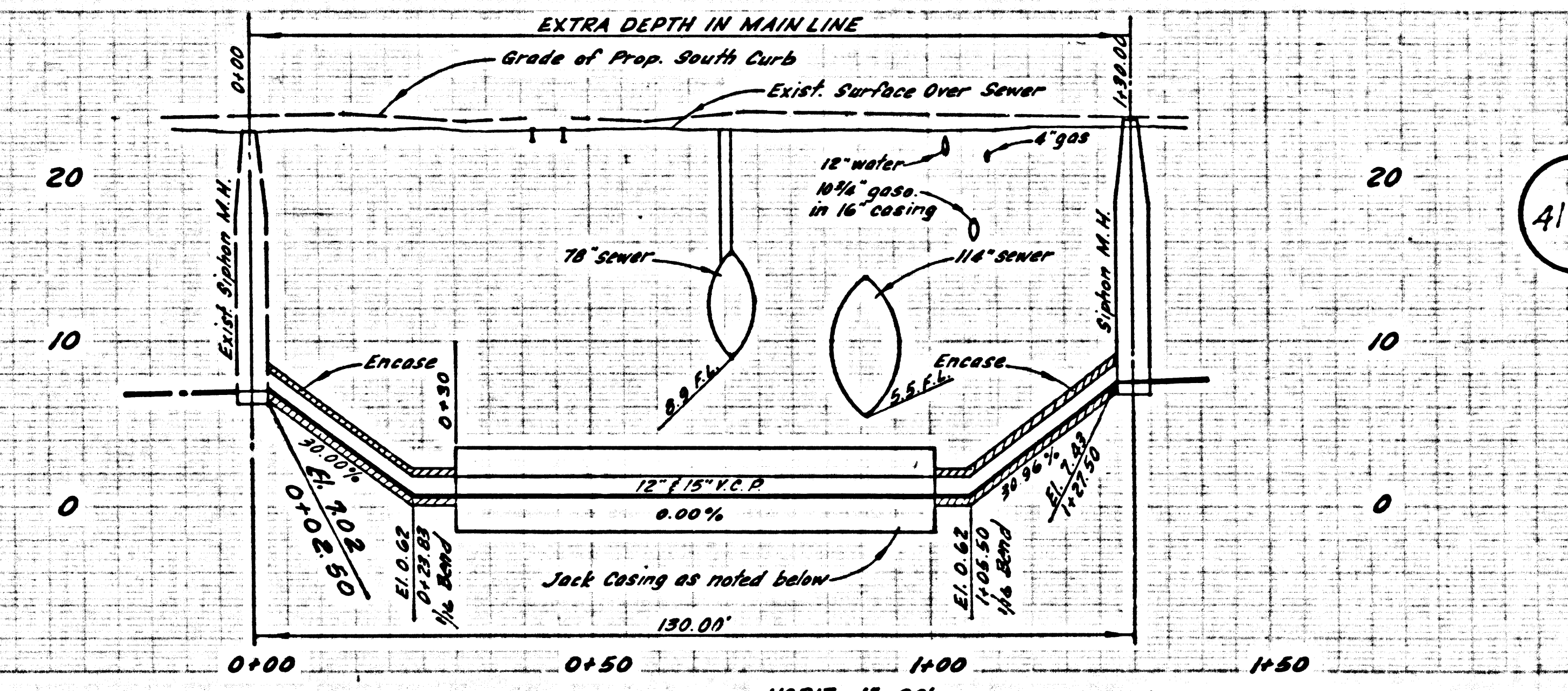
NO CHARGE FOR CONNECTIONS
DOUBLE SCALE

41693

NO CHARGE FOR CONNECTIONS DOUBLE SCALE



41694



41695

