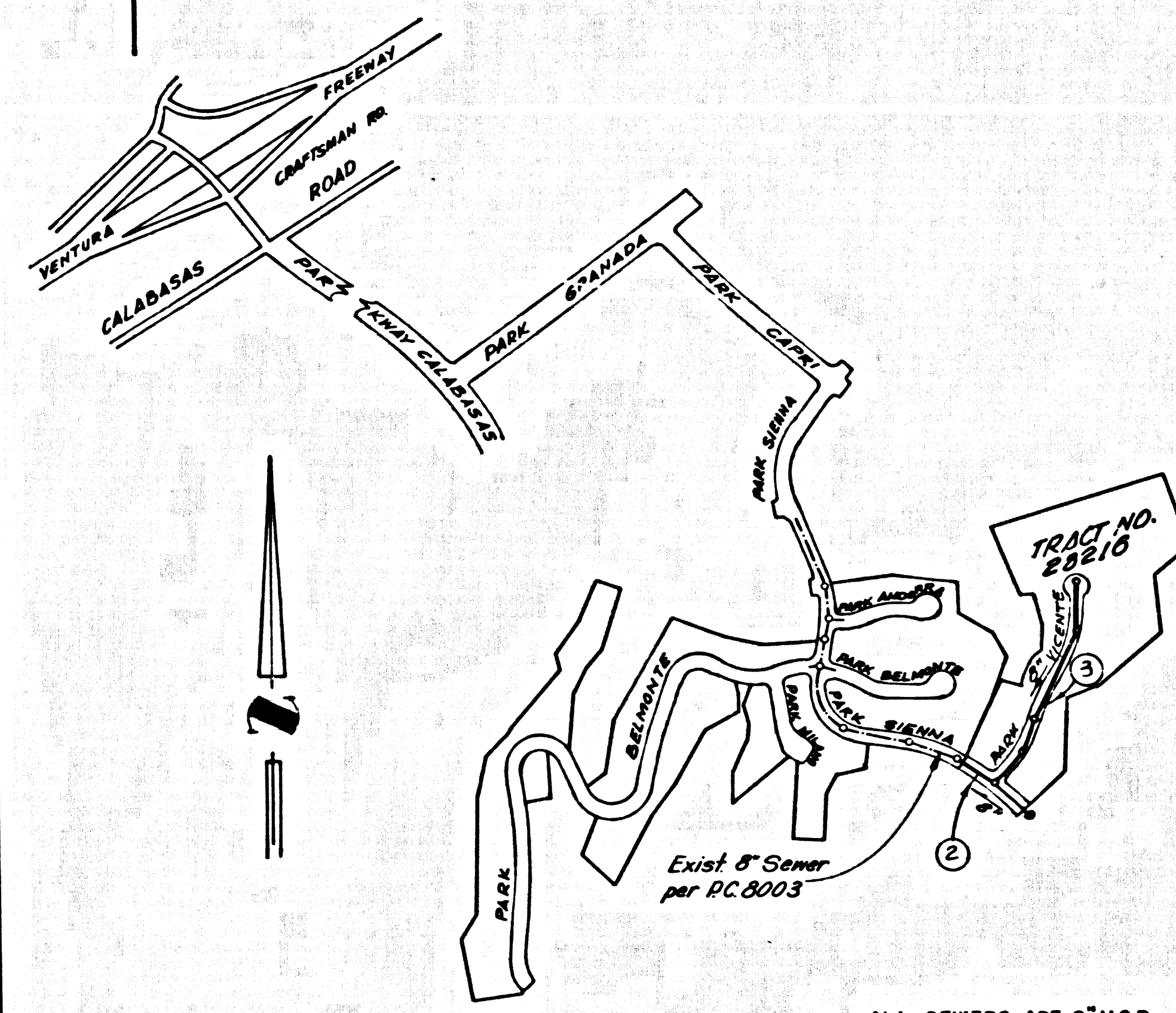


B.M. BU 7536 ELEV. 922.761  
 P.D.B.M. TAG N.W. COR. Catch Basin on  
 S.E. COR. MULNOLLAND DR. AND CALABASAS RD.  
 83 FT. 5 AND 20 FT. E. INT.  
 MALIBU QUAD. 19 65



PC. 8206  
 INDEX MAP  
 SCALE 1"=600'  
 ② INDICATES PAGE NO. 2

ALL SEWERS ARE 8" V.C.P.

THE FOLLOWING COUNTY ENGINEER STANDARD PLANS APPLY TO THIS PROJECT

LEGEND	5-1
MINIMUM PUBLIC SAFETY REQUIREMENTS	5-2
8" V.C.P. MANHOLE	5-3
NON-REINFORCED PRECAST CONCRETE MANHOLE	5-4
REINFORCED PRECAST CONCRETE MANHOLE	5-5
MANHOLE FRAME AND COVER	5-6
MANHOLE STEP	5-7
RECORDS FOR SEWER PIPE	5-8
COILING AND ENGAGEMENT	5-9
LANDING SLUGS	5-10
WYE OR TEE JOINTS	5-11
ALLOWABLE TRENCH WIDTHS	5-12
SEWER BENCH	5-13

REVISION No. 1 DEC. 15, 1965  
 DELETE SEWER LINE BETWEEN STA.  
 22+32.49 AND STA. 23+49.57 ON PAGE 2  
 APPROVED *[Signature]*  
 REGIONAL ENGINEER  
 REG. NO. 10286

REVISION No. 2 JAN. 16, 1970  
 Add Sewer Line and M.H. Between Sta.  
 22+32.49 and Sta. 23+49.57, Page 2  
 APPROVED *[Signature]*  
 Regional Engineer  
 REG. NO. 11026

DOUBLE SCALE  
 CALABASAS BLDG. DIST. NO. 91

- PROVIDE STAKES ON THE PROPERTY LINE OR PROPERTY LINES PRODUCED AT RIGHT ANGLES TO THE SEWER LINE AT THE CENTER LINE OF EACH MANHOLE.
- NO REPRESENTATIVE OF THE COUNTY ENGINEER WILL SURVEY OR LAY OUT ANY PORTION OF THE WORK.
- THE PRIVATE ENGINEER SHALL FURNISH THE COUNTY ENGINEER WITH GRADE SHEETS AND STATIONING FOR ALL HOUSE LATERALS AND "T" OR "Y" BRANCHES AND SHALL PROVIDE STAKES FOR THEM AT THEIR PROPER LOCATIONS WITH STATIONING PLAINLY MARKED. ALL HOUSE LATERALS SHALL BE CONSTRUCTED IN A STRAIGHT ALIGNMENT AT RIGHT ANGLES FROM THE MAIN LINE SEWER EXCEPT AS SHOWN ON THE PLANS. HOUSE LATERALS FROM CHIMNEYS SHALL NOT HAVE AN ANGLE OF LESS THAN 45° WITH THE MAIN LINE SEWER. ANY CHANGE IN ALIGNMENT SHALL BE REQUESTED IN WRITING BY THE PRIVATE ENGINEER.
- THE PRIVATE ENGINEER SHALL FURNISH THE HOUSE LATERAL DITCH AT THE PROPERTY LINE BELOW THE TOP OF CURB ELEVATION FOR EACH HOUSE LATERAL ON THE GRADE SHEET.
- NO REVISIONS SHALL BE MADE IN THESE PLANS WITHOUT THE APPROVAL OF THE COUNTY ENGINEER.
- THE CONTRACTOR SHALL NOTIFY THE CONSTRUCTION DIVISION BY TELEPHONE, HARBOR 9-4747, EXT. 81531, AT LEAST TWENTY-FOUR HOURS BEFORE STARTING ANY WORK UNDER THIS CONTRACT.
- ALL STRUCTURES SHALL BE EITHER BRICK MANHOLES PER 5-3 OR PRECAST CONCRETE MANHOLES PER 5-4 OR 5-5, EXCEPT AS NOTED.
- USE STANDARD MANHOLE FRAMES AND COVERS. 5-1A, EXCEPT AS NOTED.
- MANHOLE TOPS IN UNIMPROVED RIGHTS-OF-WAY TO BE SIX INCHES ABOVE FINISHED GRADE.
- USE EXTRA STRENGTH PIPE. ALL PIPE IS STANDARD DEPTH EXCEPT AS NOTED.
- WELDED CLAY PIPE JOINTS SHALL BE TYPE "D", "F" OR "G" PER STANDARD SPECIFICATION SECTION 7-10.5.
- IF A POWER POLE IS WITHIN THREE FEET OF THE SEWER, THE SEWER SHALL BE ENCASED, PER 5-23, TWO FEET ON EACH SIDE FROM THE POINT OF INTERFERENCE.
- IF DURING THE COURSE OF CONSTRUCTION IT IS DETERMINED THAT THERE IS LESS THAN FOUR FEET OF COVER OVER THE TOP OF A MAIN LINE OR HOUSE LATERAL V.C.P. SEWER WHICH IS NOT INDICATED ON THE PLANS, THE PIPE SHALL BE ENCASED PER 5-23, UNLESS OTHERWISE APPROVED BY THE COUNTY ENGINEER.
- HOUSE LATERALS TO BE CONSTRUCTED WITH INVERTS AT PROPERTY LINE 6 FEET BELOW CURB GRADE EXCEPT AS NOTED.
- RESURFACE ALL TRENCHES WITHIN PAVED AREAS TO MEET L.A. COUNTY ROAD DEPT. OR CALIFORNIA STATE HIGHWAY REQUIREMENTS IN ACCORDANCE WITH PERMITS.
- SEWERS TO BE ABLE PERFORM UNDER PER SECTION 7-10.4.1 OF THE STANDARD SPECIFICATIONS.
- SPECIAL BACKFILL IN DESIGNATED AREAS.  
 (a) BACKFILL TRENCH AND REPLACE OTHER EARTH REMOVED SO AS TO ACHIEVE THE NATURAL OR FINISHED GRADES AND SLOPES SHOWN ON THE GRADING PLAN APPROVED FOR THIS TRACT BY THE BUILDING AND SAFETY DIVISION.  
 (b) ALL BACKFILL AND EARTH REPLACES SHALL BE COMPACTED TO A MINIMUM OF 90% OF MAXIMUM DENSITY PER A.S.T.M. STAND. AND METHOD OF TEST D999-57 AS MODIFIED. ACCEPTABLE CERTIFICATION OF SUCH COMPACTION SHALL BE SUBMITTED TO THE CONSTRUCTION DIVISION.  
 (c) FOR SEWER PIPE BEDDING SEE COUNTY ENGINEER STANDARD DRAWING 5-14.
- REFER TO SECTION 7-10.4.1 OF THE STANDARD SPECIFICATIONS, REGARDING SAFETY ORDERS.

COLLECT CHARGES  
 AS INDICATED

PROFILE ALIGNMENT AND GRADE OF  
 SANITARY SEWERS  
 TO BE CONSTRUCTED IN

P.C. 8206  
 PAGE 1  
 TRACT No 28216  
 PRIVATE CONTRACT NO. 8206

W.S. 60 B/4  
 2 SHEETS; 3 PAGES  
 SCALE: VERT. 1"=4' , 196  
 HORIZ. 1"=40'

PREPARED IN THE OFFICES OF  
 BECHTEL CORPORATION  
 23600 CALABASAS ROAD, CALABASAS, CALIFORNIA  
 R.R. FEDERICKI REG. C. E. NO. 14009

FOR LEGEND SEE PLAN NO. S-1

NOTE:  
 GRADES TO WHICH THIS IMPROVEMENT IS TO BE CONSTRUCTED ARE SHOWN ON PLANS AND PROFILES. GRADE POINTS FOR TOP OF CURBS, CENTER LINE OF STREETS OR CENTER LINE OF ALLEYS ARE SHOWN BY CIRCLES ON PROFILES AT ALL POINTS BETWEEN DESIGNATED POINTS. THE GRADES SHALL BE ESTABLISHED SO AS TO CONFORM TO A STRAIGHT LINE BETWEEN SAID DESIGNATED POINTS. ELEVATIONS ARE IN FEET ABOVE U.S.C. & G.S. SEA LEVEL DATUM OF 1929.  
 THIS DRAWING AND THE DATA HEREON ARE HEREBY MADE A PART OF THE SPECIFICATIONS FOR PUBLIC WORKS CONSTRUCTION AND SHALL BE CONSTRUCTED ACCORDING TO THE UNIFORM STANDARD SPECIFICATIONS FOR PUBLIC WORKS CONSTRUCTION AND COUNTY ENGINEER SPECIAL PROVISIONS DATED 1-1-65, AS REVISED, AND SHALL BE PROSECUTED ONLY IN THE PRESENCE OF THE COUNTY ENGINEER.  
 BEFORE WORK CAN BE STARTED, THE CONTRACTOR MUST OBTAIN A PERMIT TO EXCAVATE IN COUNTY STREETS FROM THE L.A. COUNTY ROAD DEPT., DISTRICT OFFICE NO. 22 AND PAY A FEE TO THE COUNTY ENGINEER, ROOM 330, COUNTY ENGINEERING BUILDING, 100 WEST SECOND STREET, LOS ANGELES, CALIFORNIA.  
 APPROVAL OF THIS PLAN BY THE COUNTY OF LOS ANGELES DOES NOT CONSTITUTE A REPRESENTATION AS TO THE ACCURACY OF THE LOCATION OF OR THE EXISTENCE OR NON-EXISTENCE OF ANY UNDERGROUND UTILITY PIPE, OR STRUCTURE WITHIN THE LIMITS OF THIS PROJECT. THIS NOTE APPLIES TO ALL PAGES.  
 IF WORK IS TO BE DONE IN A STATE HIGHWAY, A PERMIT MUST BE OBTAINED FROM THE STATE OF CALIFORNIA, DIVISION OF HIGHWAYS, 120 SOUTH SPRING STREET, LOS ANGELES, CALIFORNIA.

COUNTY OF LOS ANGELES, CALIFORNIA  
 JOHN A. LAMBIE, COUNTY ENGINEER  
 APPROVED BY *[Signature]*  
 REGIONAL ENGINEER

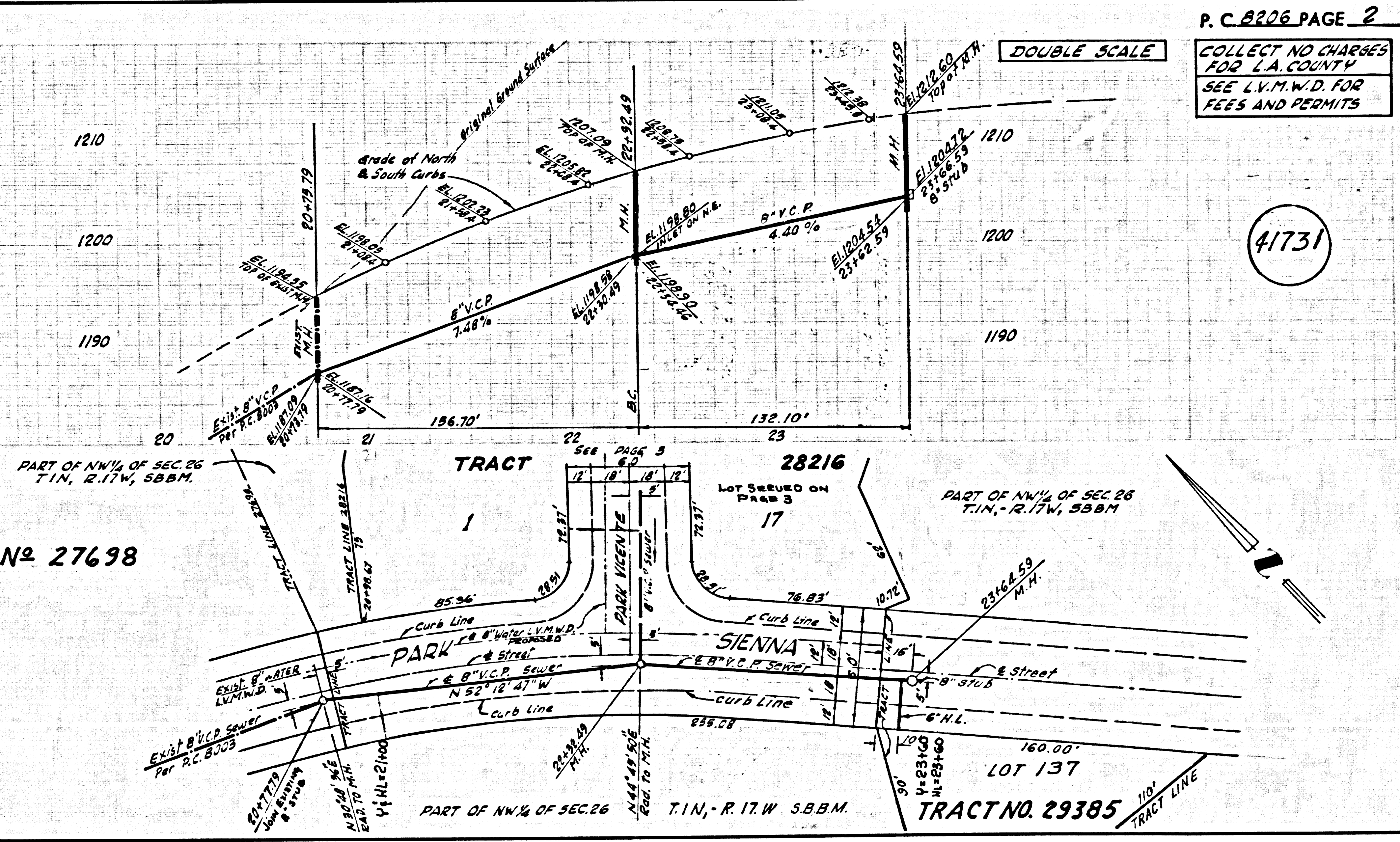
LAS VIRGENES MUNICIPAL WATER DISTRICT  
 APPROVED BY *[Signature]*  
 DISTRICT ENGINEER

CHECKED BY *[Signature]*  
 REG. C. E. NO. 3501

41730

J.N. 0250.02

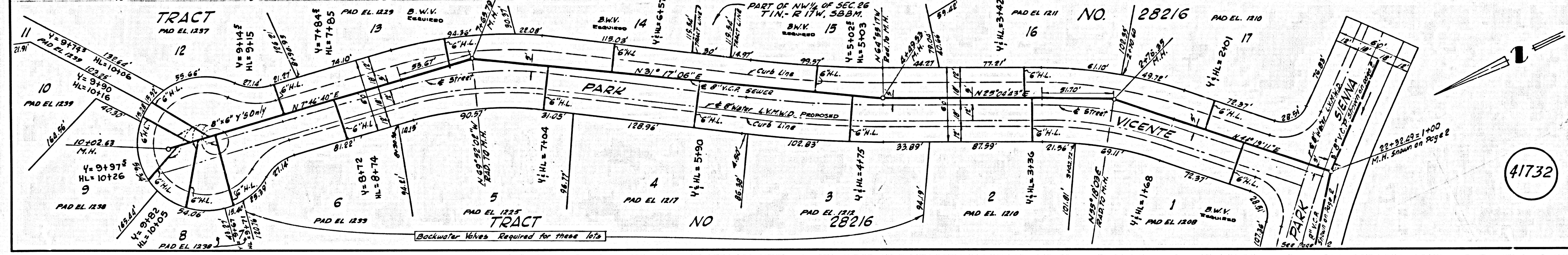
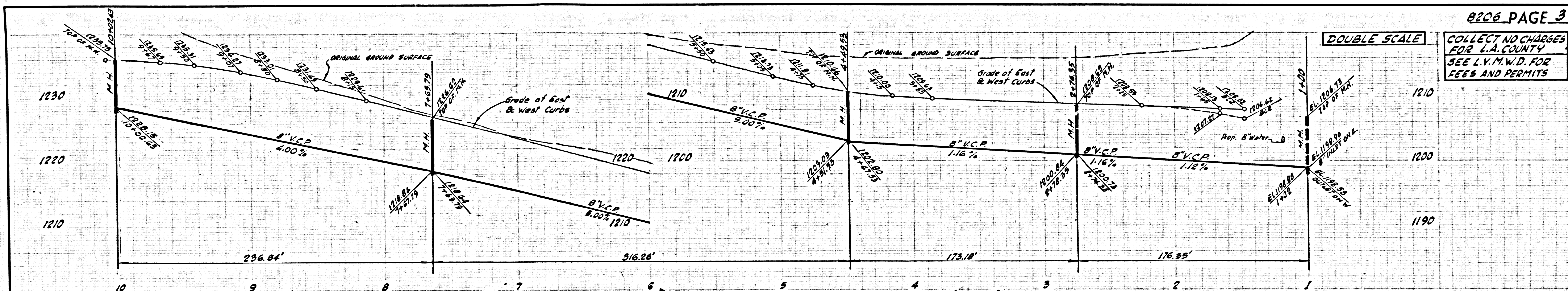
TRACT No 27698



P.C. 8206 PAGE 2  
 COLLECT NO CHARGES  
 FOR L.A. COUNTY  
 SEE L.V.M.W.D. FOR  
 FEES AND PERMITS

41731

COLLECT NO CHARGES FOR L.A. COUNTY SEE L.V.M.W.D. FOR FEES AND PERMITS



41732