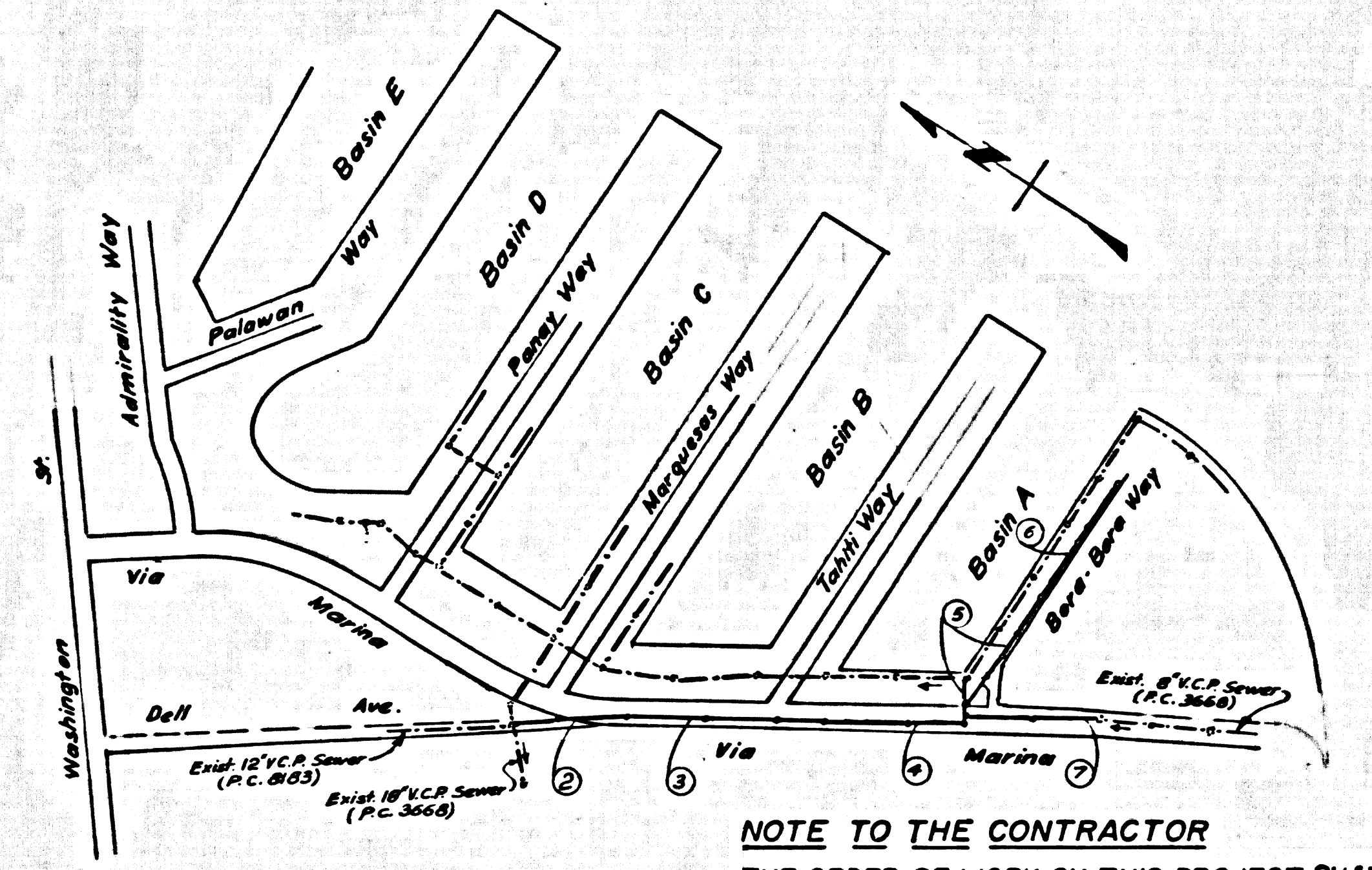


DOUBLE SCALE
LENNOX BUILDING DISTRICT No. 7

B.M. 5-29 ELEV. 10.005
F.B. 2679-94
S.W. Cor., Basin "B", Sta. 72+57.80
Bt. Spk. in Top Of Bulkhead Wall



INDEX MAP
NO SCALE
C.C. 8216
J.N. 0739.78

NOTE TO THE CONTRACTOR
THE ORDER OF WORK ON THIS PROJECT SHALL BE AS FOLLOWS:
1. Construct all main line sewer and appurtenances complete in place, including backfill, as shown on pages 5B and 6.
2. Construct all main line sewer and appurtenances complete in place, including backfill, as shown on pages 5A and 7.
3. Construct all main line sewer and appurtenances complete in place, including backfill, as shown on pages 2, 3 and 4.
4. Reconstruct channel in base of junction chamber as shown in detail on pg. 7.
No subsequent order of work is to commence until the previous order is completed.

USE EXTRA STRENGTH PIPE. ALL PIPE IS STANDARD DEPTH EXCEPT AS NOTED.
USE MECHANICAL COMPRESSION JOINTS FOR ALL IRONPIPE, CLAY PIPE, SEWER,
ALL STRUCTURES SHALL BE BRICK MANHOLE, EXCEPT AS NOTED.
USE STANDARD MANHOLE FRAMES AND COVERS, GROUPS AS NOTED.
ALL TEST SEWERS FOR LEAKAGE PER SECTION 100-12.1.1 OF THE STANDARD SPECIFICATIONS, AND SPECIAL PROVISIONS.
"1" OR "1/2" BRANCH MAY BE USED FOR CONNECTIONS TO MAINLINE SEWERS GROUPS AS NOTED.
VITRIFIED CLAY PIPE JOINTS SHALL BE TYPE "D", "E" OR "F" PER SECTION 100-1.2 OF THE STANDARD SPECIFICATIONS.
NO REVISIONS SHALL BE MADE IN THESE PLANS WITHOUT THE APPROVAL OF THE COUNTY ENGINEER.
FIGURES IN CIRCLES AT ENDS OF HOUSE LATERALS INDICATE HOUSE LATERALS SHALL BE CONSTRUCTED WITH 1/2" USE PER FOOT TO PROPERTY LINE.
WORDS IN CIRCLES AT ENDS OF HOUSE LATERALS INDICATE 1/2" USE PER FOOT HORIZONTAL AND HOUSE LATERALS SHALL BE COMPLETED WITH 1/2" USE PER FOOT HORIZONTAL AND HOUSE LATERALS SHALL BE COMPLETED WITH 1/2" USE PER FOOT HORIZONTAL.
ALL HOUSE LATERALS SHALL BE CONSTRUCTED IN A STRAIGHT ALIGNMENT AT RIGHT ANGLES FROM THE MAIN LINE SEWER EXCEPT AS SHOWN ON THE PLANS. HOUSE LATERALS FROM CHIMNEYS SHALL NOT HAVE AN ANGLE OF LESS THAN 45 DEGREES WITH THE MAIN LINE SEWER.
THE CONTRACTOR SHALL NOTIFY THE CONSTRUCTION DIVISION BY TELEPHONE MADISON 9-0700, EXT. 8181 AT LEAST 24 HOURS BEFORE STARTING ANY WORK UNDER THIS CONTRACT.
THE CONTRACTOR SHALL MEET ALL APPLICABLE SPECIAL CONSTRUCTION REQUIREMENTS OF THE DEPARTMENT OF SMALL CRAFT HARBOUR, MARINA DEL REY. REQUIREMENTS ARE AVAILABLE AT THE DEPARTMENT'S ADMINISTRATION BUILDING AT MARINA DEL REY.
REFER TO SECTION 7-10.4.1 OF THE STANDARD SPECIFICATIONS, REGARDING SAFETY ORDERS.
RESURFACING SCHEDULE: RESURFACE WITHIN PAVED AREA WITH 1/2" ASPHALTIC CONCRETE 3 INCHES IN THICKNESS ON 3 INCHES OF AGGREGATE BASE MATERIALS, EXCEPT AS NOTED BELOW.
ADJUSTMENT OF ALL EXISTING SEWERS AND MANHOLES SHALL BE PER SEC. 100-2 OF STANDARD PROVISIONS.
USE CASE B BEDDING FOR ALL SEWER PIPES PER S-23.
A SOIL INVESTIGATION REPORT IS NOT AVAILABLE FOR THIS PROJECT.
PRIOR TO CONSTRUCTION, THE CONTRACTOR SHALL SECURE A FEE-EXEMPT ROAD PERMIT, COUNTY ROAD DEPARTMENT, 1218 S. 41ST STREET, LOS ANGELES, 90006.
PRIOR TO CONSTRUCTION, THE CONTRACTOR SHALL SECURE A FEE-EXEMPT CONSTRUCTION PERMIT, COUNTY ENGINEER SANITATION DIVISION, ROOM 510, 18 W. SECOND ST., LOS ANGELES, 90012.

ALL CONCRETE CROSS GUTTERS, CURBS, GUTTERS, HAMMERS, AND BRICKWORK SHALL BE TURNED OR JACKED PER LOS ANGELES COUNTY ROAD DEPARTMENT REQUIREMENTS.
THE FOLLOWING LATEST REVISED STANDARD PLANS ON FILE IN THE OFFICE OF COUNTY ENGINEER SHALL APPLY IN THE CONSTRUCTION OF THIS PROJECT.

LEGEND	1-1
MINIMUM PUBLIC SAFETY REQUIREMENTS	1-1
BRICK MANHOLE	1-1
MANHOLE FRAME AND COVER	1-1
MANHOLE STEP	1-1
BEDDING FOR SEWER PIPE	1-1
SPECIAL SUPPORT AND PROTECTION	1-1
CRACKING AND INCASEMENT	1-1
STANDARD WYE SUPPORT	1-1
ALLOWABLE TRENCH WIDTHS	1-1
STOPPER	1-1

THE UNDERGROUND UTILITY COMPANIES WITHIN THE LIMITS OF THIS PROJECT ARE AS FOLLOWS:
(1) L.A. County Water Works
(2) So. Counties Gas Co.
(3) So. Calif. Edison Co. & General Telephone.
(4)

NO CHARGE FOR CONNECTIONS
[Signature]

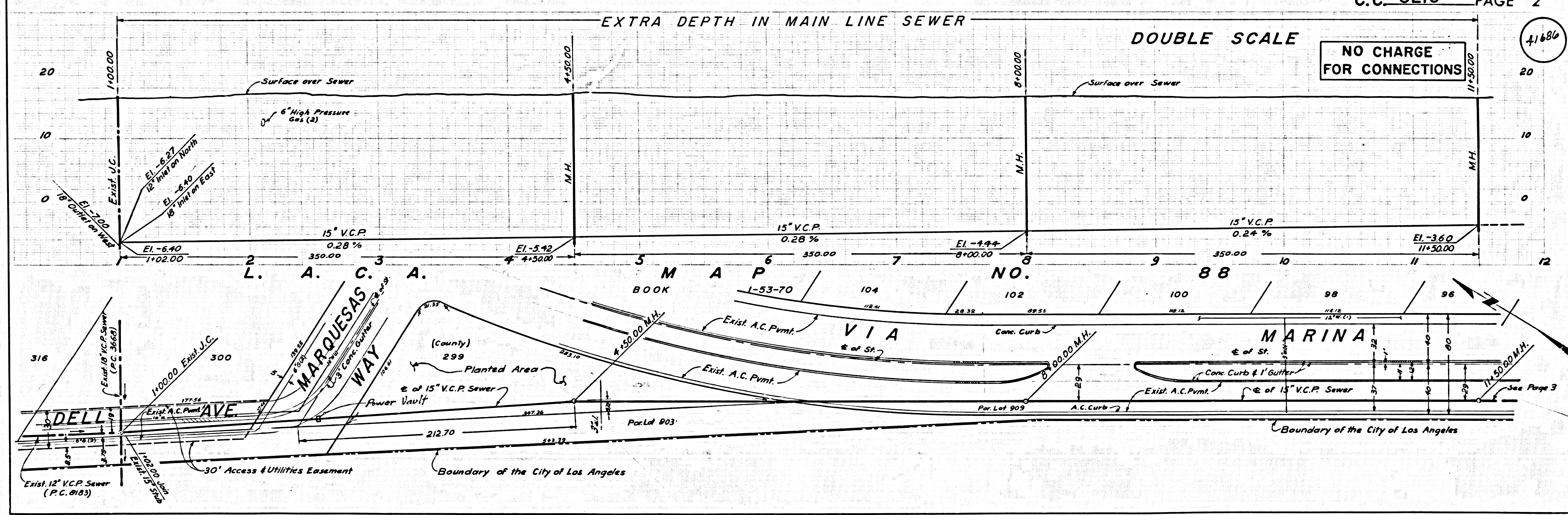
CASH CONTRACT NO. 8216
PROFILE, ALIGNMENT AND GRADE OF
SANITARY SEWERS
TO BE CONSTRUCTED IN
VIA MARINA
AND OTHER RIGHTS OF WAY
MARINA DEL REY
4 SHEETS, 7 PAGES

SCALE: VERT. 1" = 8'
HORIZ. 1" = 40'
W.S. 23
MARCH 1969
COUNTY OF LOS ANGELES, CALIFORNIA

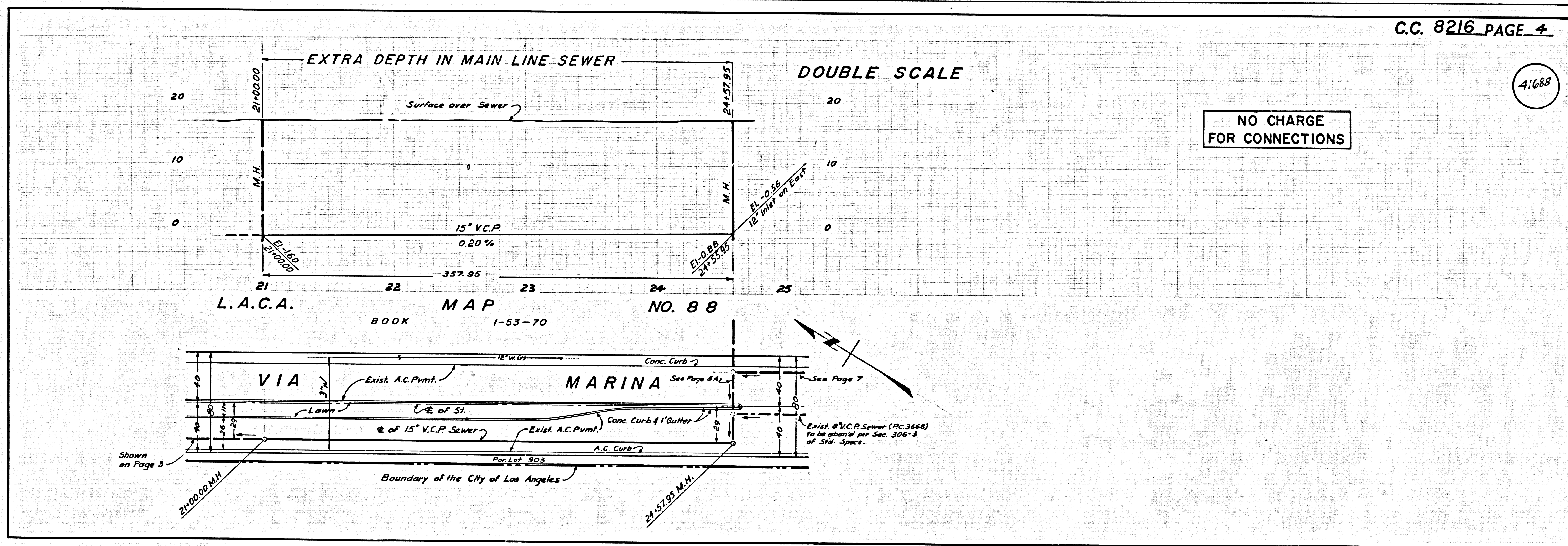
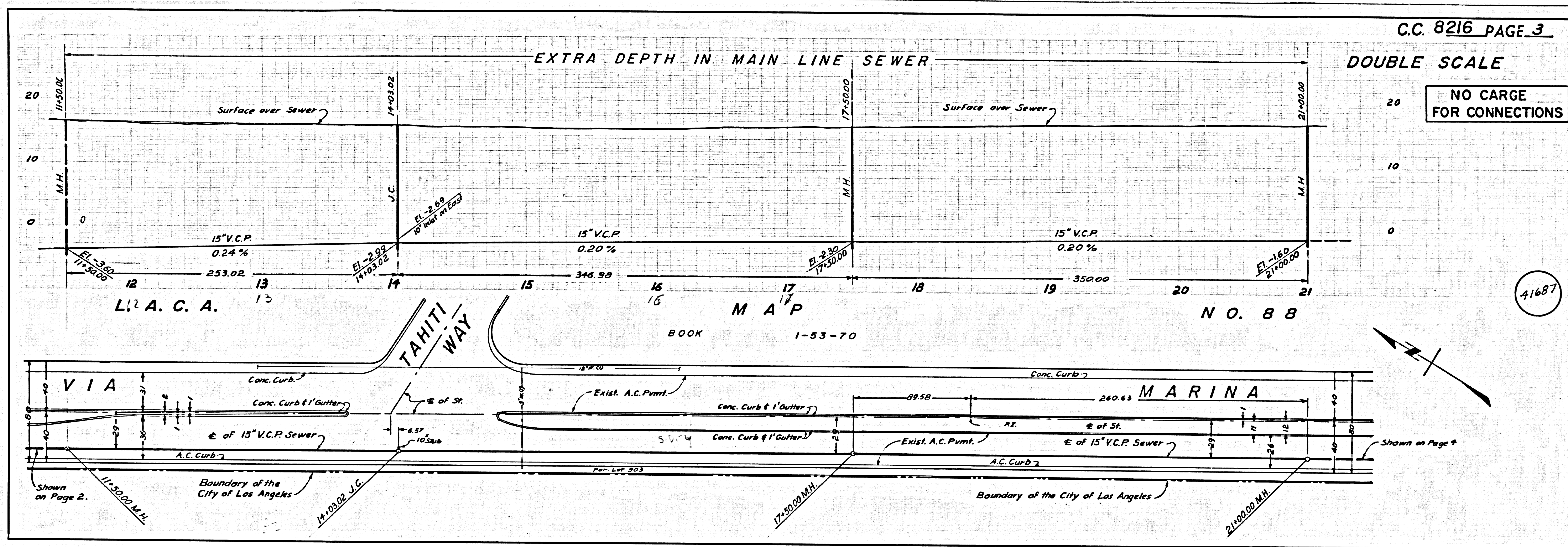
JOHN A. LAMBIE
COUNTY ENGINEER
APPROVED BY: *[Signature]* 3-18-69
ASST. DIVISION ENGINEER
REVIEWED BY: *[Signature]*
SEWER DIST. ENGR.
DESIGNED BY: *[Signature]* 3-18-69
ENGR. C.E. NO. 14180

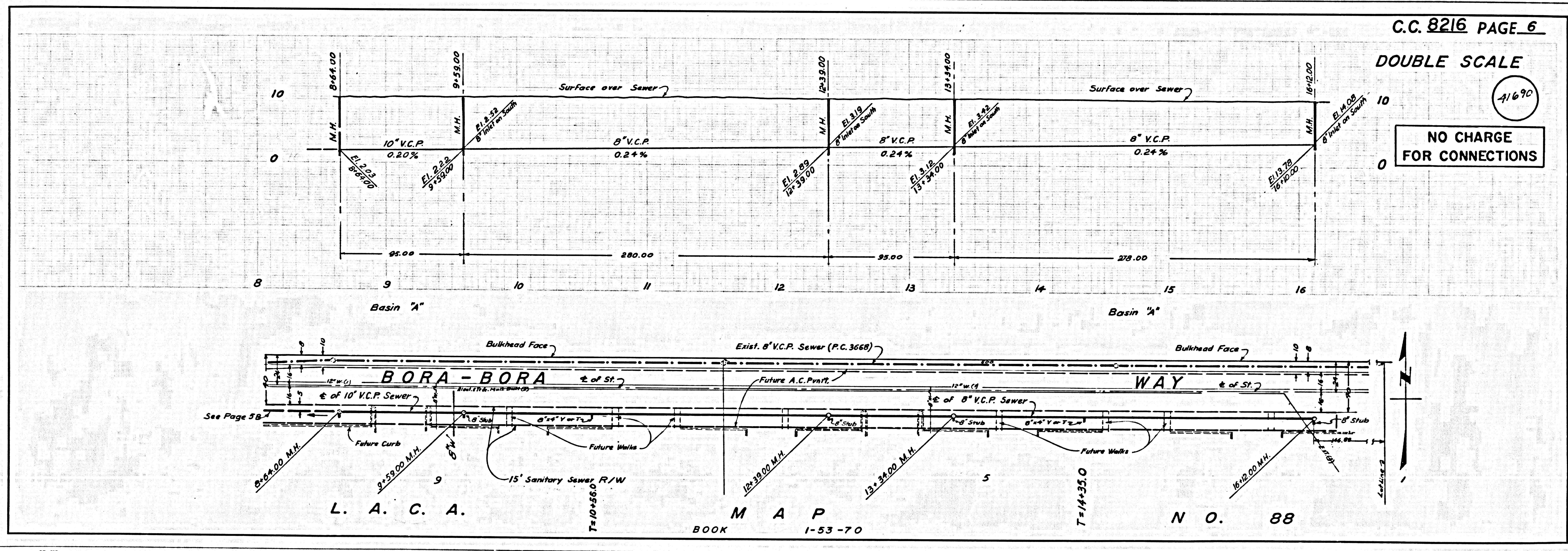
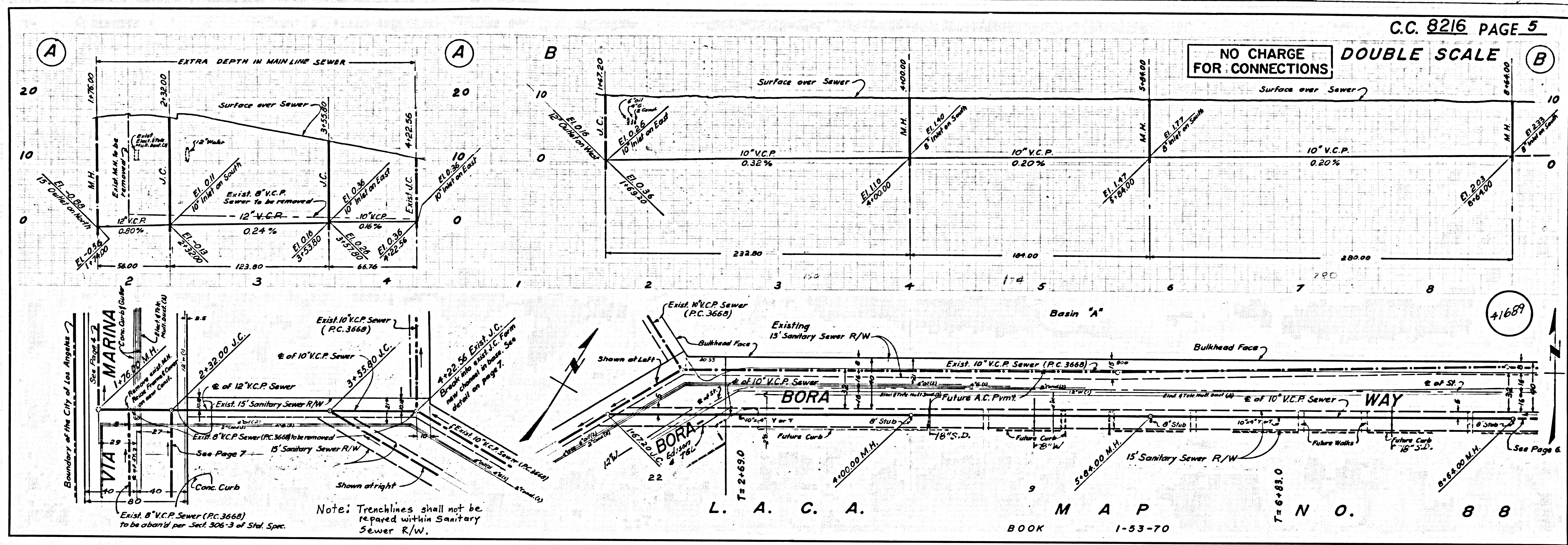
WORK SHALL BE CONSTRUCTED ACCORDING TO THE STANDARD SPECIFICATIONS FOR PUBLIC WORKS CONSTRUCTION AND SPECIAL PROVISIONS FOR THE CONSTRUCTION OF SANITARY SEWERS DATE FEB. 21, 1964, AS REVISED, AND SHALL BE PROTECTED ONLY IN THE PRESENCE OF THE COUNTY ENGINEER.
GRADES TO WHICH THE IMPROVEMENT IS TO BE CONSTRUCTED ARE SHOWN ON PLANS AND PROFILE. GRADE POINTS FOR TOP OF CURB, CENTER LINE OF STREET OR ALLEY ARE SHOWN BY CIRCLES ON PROFILES AT ALL POINTS BETWEEN DESIGNATED POINTS. THE GRADE SHALL BE ESTABLISHED TO BE TO CORRESPOND TO A STRAIGHT LINE BETWEEN SAID DESIGNATED POINTS.
DIMENSIONS ARE IN FEET UNLESS INDICATED OTHERWISE.
KEY POINTS FOR ADJUSTMENTS TO BE MADE SHALL BE SHOWN BY CIRCLES.
REVISIONS TO THIS DRAWING AND THE DATA HEREON ARE HEREBY MADE A PART OF THE SPECIFICATIONS.

LAYOUT	1/25	UNDERGROUND	SCOTT
TRACED	1/25	BENCH MARKS	BOWLES
CHECKED	1/25	MAINTENANCE	PEARSON 3/17/69
F.B. 2679, 2680		INSPECTOR	
A.B.	W.S. 23	RECORD PLANS	



NO CHARGE FOR CONNECTIONS
[Signature]

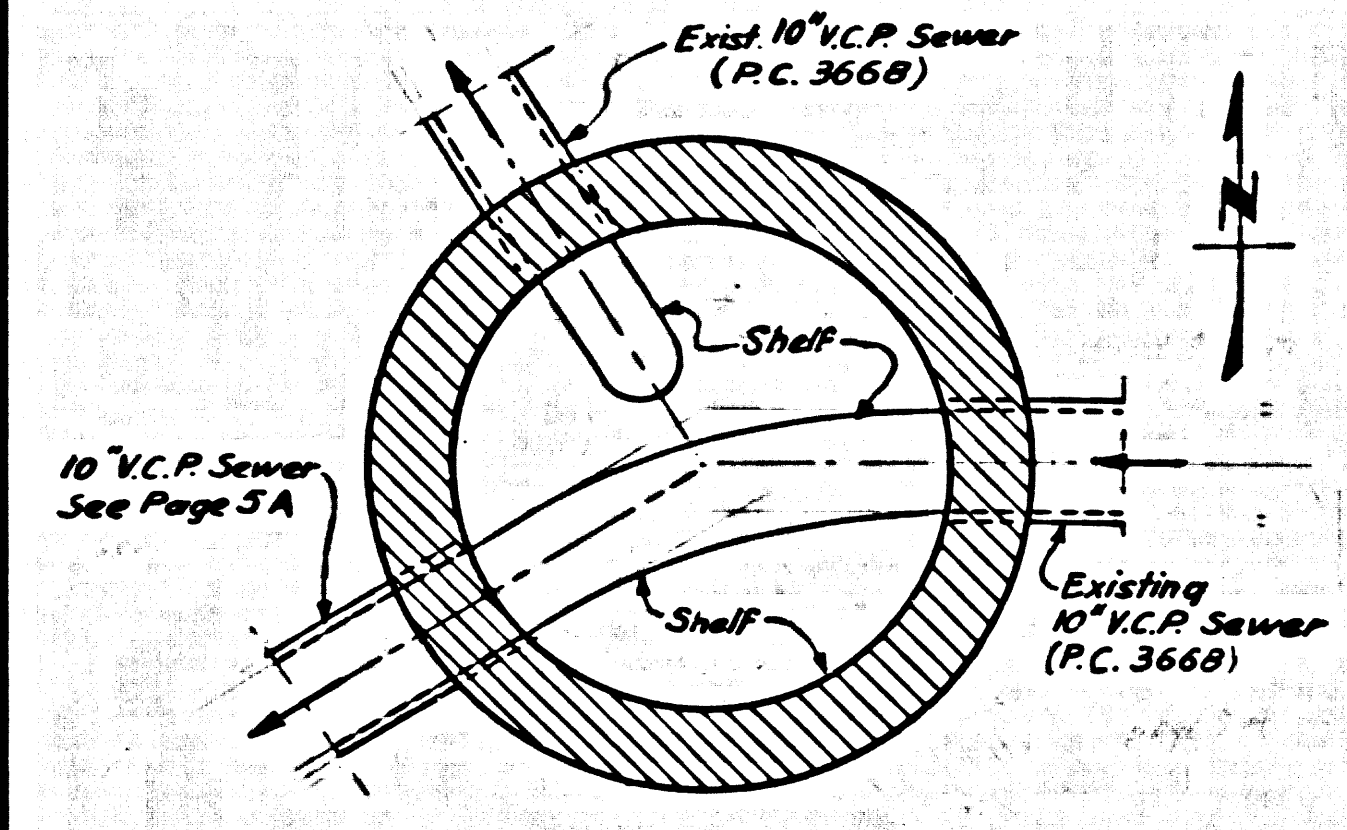
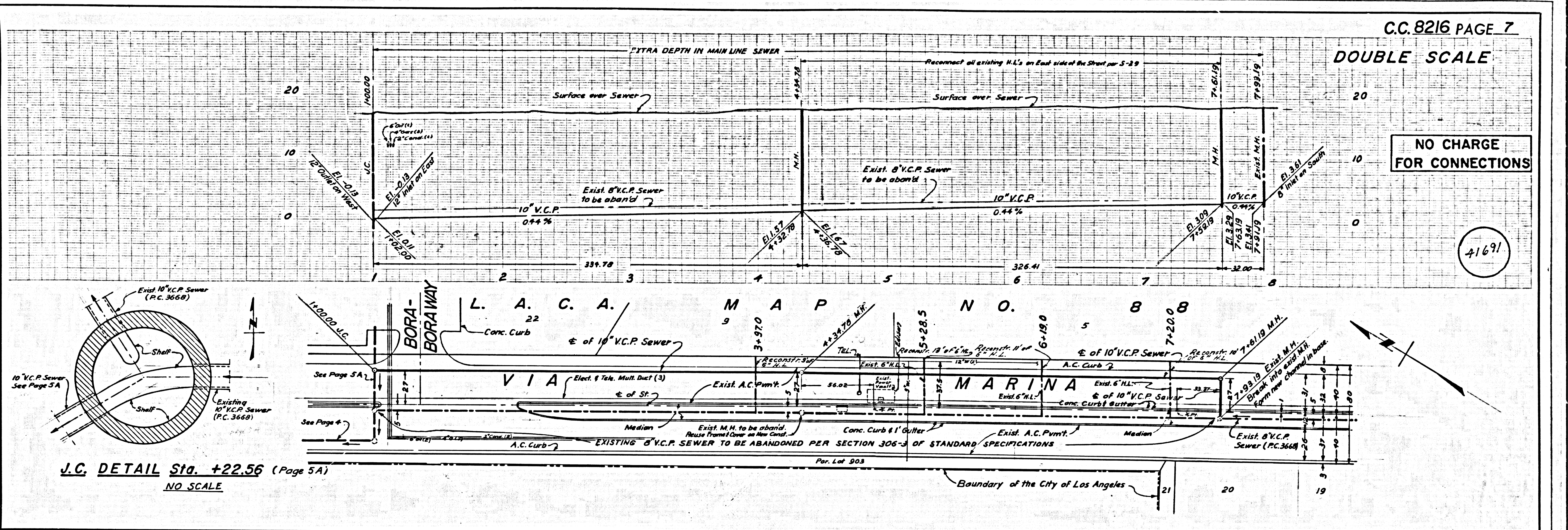




DOUBLE SCALE

NO CHARGE FOR CONNECTIONS

41691



J.C. DETAIL STA. +22.56 (Page 5A)
NO SCALE

