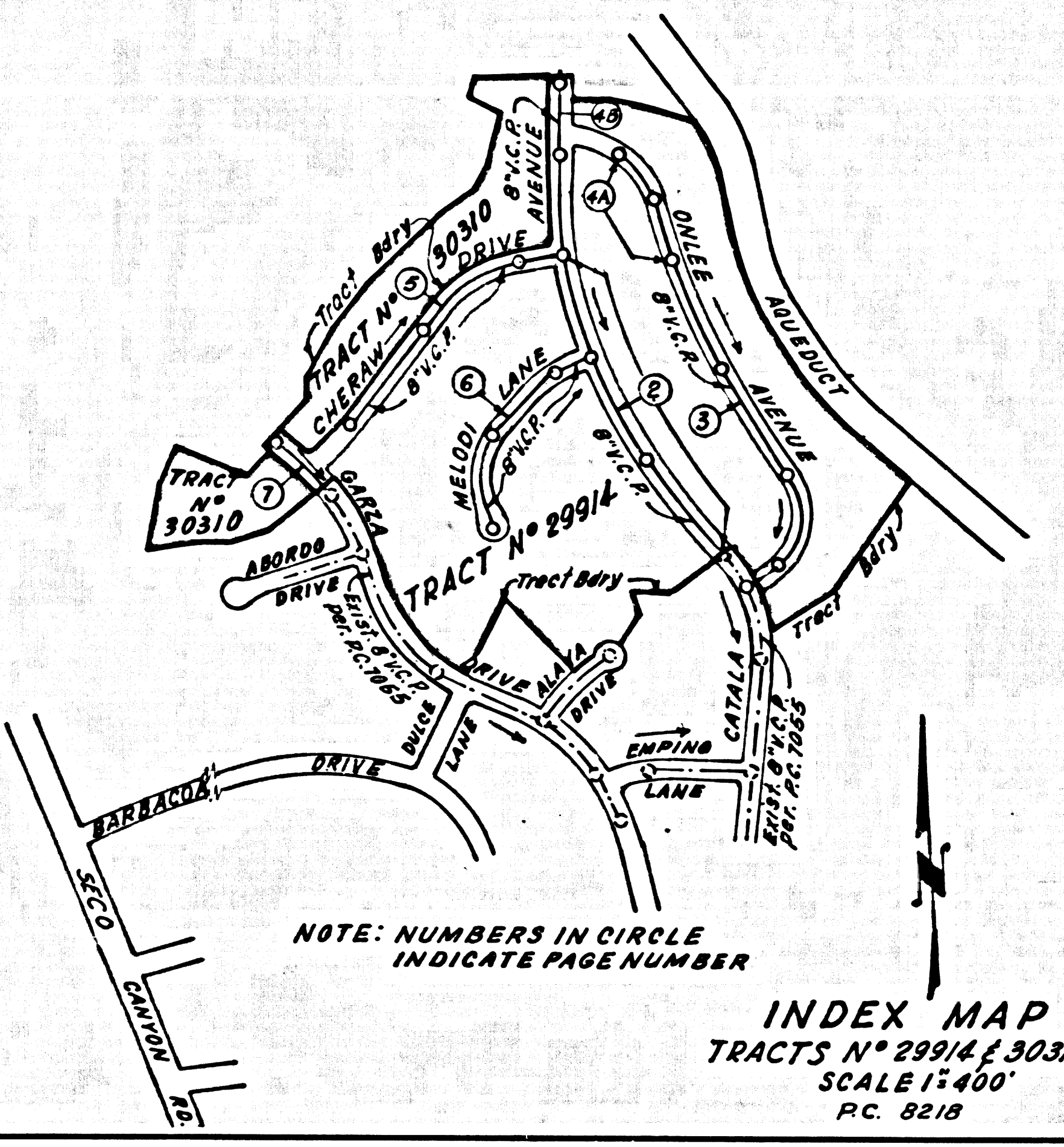


B.M. S.L. 1733 ELEV. 1176.822  
 R.D. & M. TAG CONC. FTD. OF  
 BLOCK WALL 60 FT. E/O & BOUQUET CN. RD.  
 NR. C/L PROD. SECO CN. ROAD.  
 NEWHALL QUAD. 1958

THE FOLLOWING COUNTY ENGINEER STANDARD  
 PLANS APPLY TO THIS PROJECT:

|                                      |      |
|--------------------------------------|------|
| LEGEND                               | S-1  |
| MINIMUM PUBLIC SAFETY REQUIREMENTS   | S-2  |
| BRICK MANHOLE                        | S-3  |
| NON-REINFORCED PRECAST CONC. MANHOLE | S-5  |
| REINFORCED PRECAST CONC. MANHOLE     | S-6  |
| MANHOLE FRAME AND COVER              | S-15 |
| MANHOLE STEP                         | S-17 |
| BEDDING FOR SEWER PIPE               | S-21 |
| CRADLING AND ENCASEMENT              | S-23 |
| WYE OR TEE SUPPORT                   | S-26 |
| ALLOWABLE TRENCH WIDTHS              | S-33 |
| SPECIAL SUPPORT AND PROTECTION       | S-22 |



REVISIONS  
 1. REVISED LOT NUMBERS TRACT 29914 PG. 8, 9, 4, 5 & 6.  
 2. REVISED TRACT BOUNDARY-ADDED TRACT 30310 (LOT NUMBERS 1, 4, 5 & 7).  
 3. REVISED WINDY LANE TO CHERAW DRIVE PG. 1, 14, 17, 18, 19, 20, 21, 22, 23, 24, 25, 26, 27, 28, 29, 30, 31, 32, 33, 34, 35, 36, 37, 38, 39, 40, 41, 42, 43, 44, 45, 46, 47, 48, 49, 50, 51, 52, 53, 54, 55, 56, 57, 58, 59, 60, 61, 62, 63, 64, 65, 66, 67, 68, 69, 70, 71, 72, 73, 74, 75, 76, 77, 78, 79, 80, 81, 82, 83, 84, 85, 86, 87, 88, 89, 90, 91, 92, 93, 94, 95, 96, 97, 98, 99, 100.  
 APPROVED: [Signature] P.C. 8218  
 OFFICE OF THE COUNTY ENGINEER

Lots 122 to 128 Served  
 By P.C. 7055

No connections for the disposal of industrial wastes shall be made to sewers shown on these drawings without written permission from the Chief Engineer and General Manager of the County Sanitation District.

DOUBLE SCALE  
 NEWHALL BLDG. DIST. NO. 8.2

- NOTES:
- PROVIDE STAKES ON THE PROPERTY LINE OR PROPERTY LINES PRODUCED AT RIGHT ANGLES TO THE SEWER LINE AT THE CENTER LINE OF EACH MANHOLE.
  - NO REPRESENTATIVE OF THE COUNTY ENGINEER WILL SURVEY OR LAY OUT ANY PORTION OF THE WORK.
  - THE PRIVATE ENGINEER SHALL FURNISH THE COUNTY ENGINEER WITH GRADE SHEETS AND STATIONING FOR ALL HOUSE LATERALS AND "T" BRANCHES AND SHALL FURNISH STAGES FOR THEM AT THEIR PROPER LOCATIONS WITH STATIONING PLAINLY MARKED. ALL HOUSE LATERALS SHALL BE CONSTRUCTED IN A STRAIGHT ALIGNMENT AT RIGHT ANGLES FROM THE MAIN LINE SEWER EXCEPT AS SHOWN ON THE PLANS. HOUSE LATERALS FROM CHIMNEYS SHALL NOT HAVE AN ANGLE OF LESS THAN 45° WITH THE MAIN LINE SEWER. ANY CHANGE IN ALIGNMENT SHALL BE REQUESTED BY WRITING BY THE PRIVATE ENGINEER.
  - THE PRIVATE ENGINEER SHALL FURNISH THE HOUSE LATERAL WITHIN AT THE PROPERTY LINE BELOW THE TOP OF CURB ELEVATION FOR EACH HOUSE LATERAL ON THE GRADE SHEET.
  - NO REVISIONS SHALL BE MADE IN THESE PLANS WITHOUT THE APPROVAL OF THE COUNTY ENGINEER.
  - THE CONTRACTOR SHALL NOTIFY THE CONSTRUCTION DIVISION BY TELEPHONE, MANSION 9-47, EXT. 8151, AT LEAST TWENTY-FOUR HOURS BEFORE STARTING ANY WORK UNDER THIS CONTRACT.
  - ALL STRUCTURES SHALL BE EITHER BRICK MANHOLES PER S-3 OR PRECAST CONCRETE MANHOLES PER S-5 OR S-6 EXCEPT AS NOTED.
  - VITRIFIED CLAY PIPE JOINTS SHALL BE TYPE D, F OR G PER STD. SPEC. SEC. 208-2.
  - MANHOLE TOPS ON UNIMPROVED RIGHTS-OF-WAY TO BE SIX INCHES ABOVE FINISHED GRADE.
  - USE STEEL PROTECTIVE PIPE, ALL PIPE IS STANDARD UNLESS NOTED OTHERWISE.
  - "FOOT" BRANCHES MAY BE USED FOR CONNECTIONS TO MAINLINE SEWERS EXCEPT AS NOTED.
  - IF A POWER POLE IS WITHIN THREE FEET OF THE SEWER, THE SEWER SHALL BE ENCASED, PER S-23, TWO FEET ON EACH SIDE FROM THE POINT OF INTERFERENCE.
  - IF DURING THE COURSE OF CONSTRUCTION IT IS DETERMINED THAT THERE IS LESS THAN FOUR FEET OF COVER OVER THE TOP OF A MAIN LINE OR HOUSE LATERAL V.C.P. SEWER WHICH IS NOT INDICATED ON THE PLANS, THE PIPE SHALL BE ENCASED PER S-23, UNLESS OTHERWISE APPROVED BY THE COUNTY ENGINEER.
  - HOUSE LATERALS TO BE CONSTRUCTED WITH INVERTS AT PROPERTY LINE 6 FEET BELOW CURB GRADE EXCEPT AS NOTED.
  - RESURFACE ALL TRENCHES WITHIN PAVED AREAS TO MEET L.A. COUNTY ROAD DEPT. OR CALIFORNIA STATE HIGHWAY REQUIREMENTS IN ACCORDANCE WITH PERMITS.
  - SEWERS TO BE TESTED FOR LEAKAGE PER SECTION 208-2.3 OF THE STANDARD SPECIFICATIONS.
  - REFER TO SECTION 7-10.01 OF THE STANDARD SPECIFICATIONS REGARDING SAFETY ORDERS.
  - ALL JOINTS BETWEEN CAST IRON PIPE AND VITRIFIED CLAY PIPE SHALL BE MADE WITH A RUBBER SLEEVE JOINT TYPE "E" OR "D" (WITH BUSHING IF NECESSARY) PER STANDARD SPECIFICATION SECTION 208-2.3.

County Sanitation Districts shall be notified prior to the following so that required inspection can be made (Phone 537-1025 - 400-0099)

Acceptance of the project.

COLLECT CHARGES AS INDICATED

NOTICE TO CONTRACTOR  
 The existence and location of any underground utility pipes or structures shown on these plans are obtained by a search of the available records. To the best of my knowledge there are no existing utilities except as shown on these plans. The contractor is required to take due precautionary measures to protect the utility lines shown and any other lines not of record or not shown on these plans.  
 [Signature] P.C. 8218

PROFILE, ALIGNMENT AND GRADE OF  
 SANITARY SEWERS PAGE 1

CONSTRUCTED IN  
 TRACTS NO. 29914 & 30310  
 PRIVATE CONTRACT NO. 8218

273 5125 & 273 5129  
 4 SHEETS, 7 PAGES

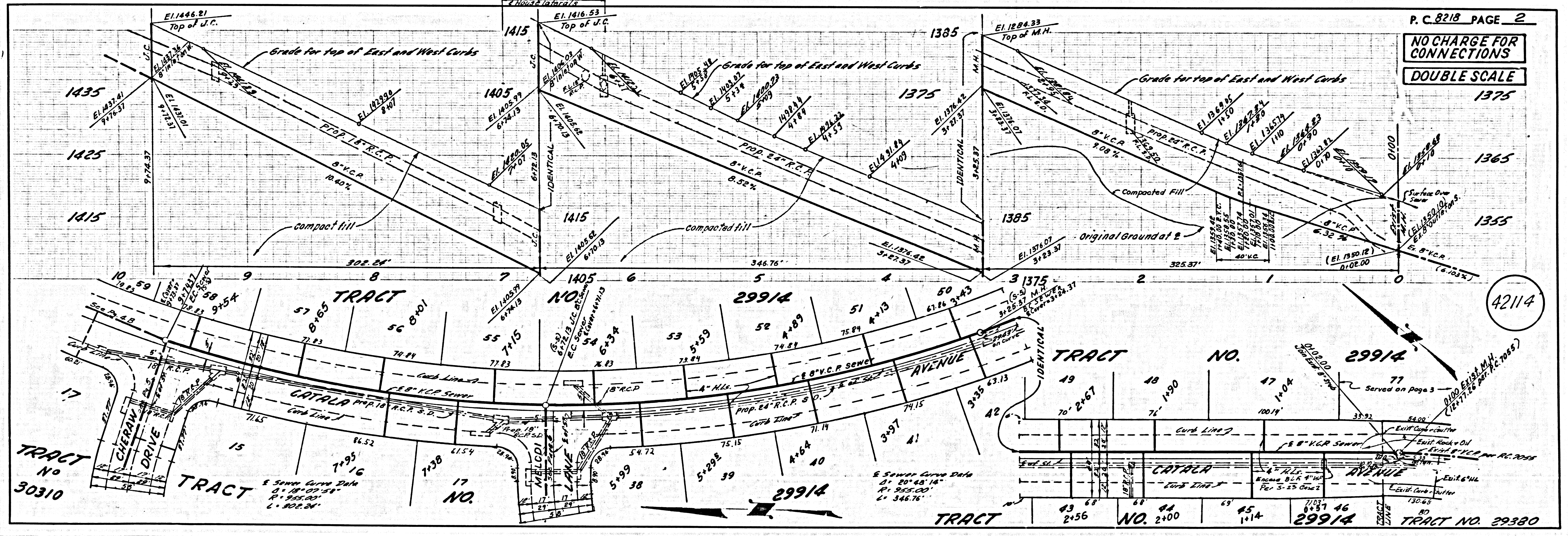
SCALE: VERT. 1"=4' HORIZ. 1"=40'  
 DATE: JUNE, 1969  
 PREPARED IN THE OFFICES OF  
 VOORHEES-TRINDLE CO.,  
 5919 VAN NUYS BLVD. VAN NUYS, CALIF.  
 [Signature] REG. C. E. NO. 16744

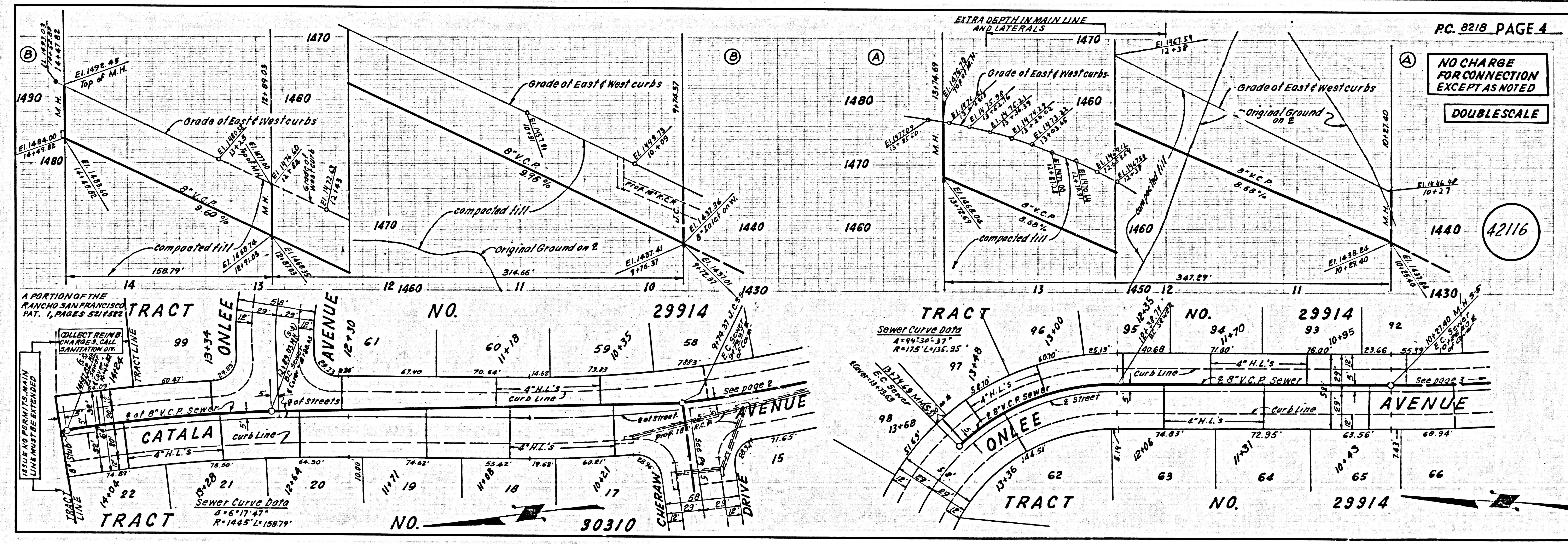
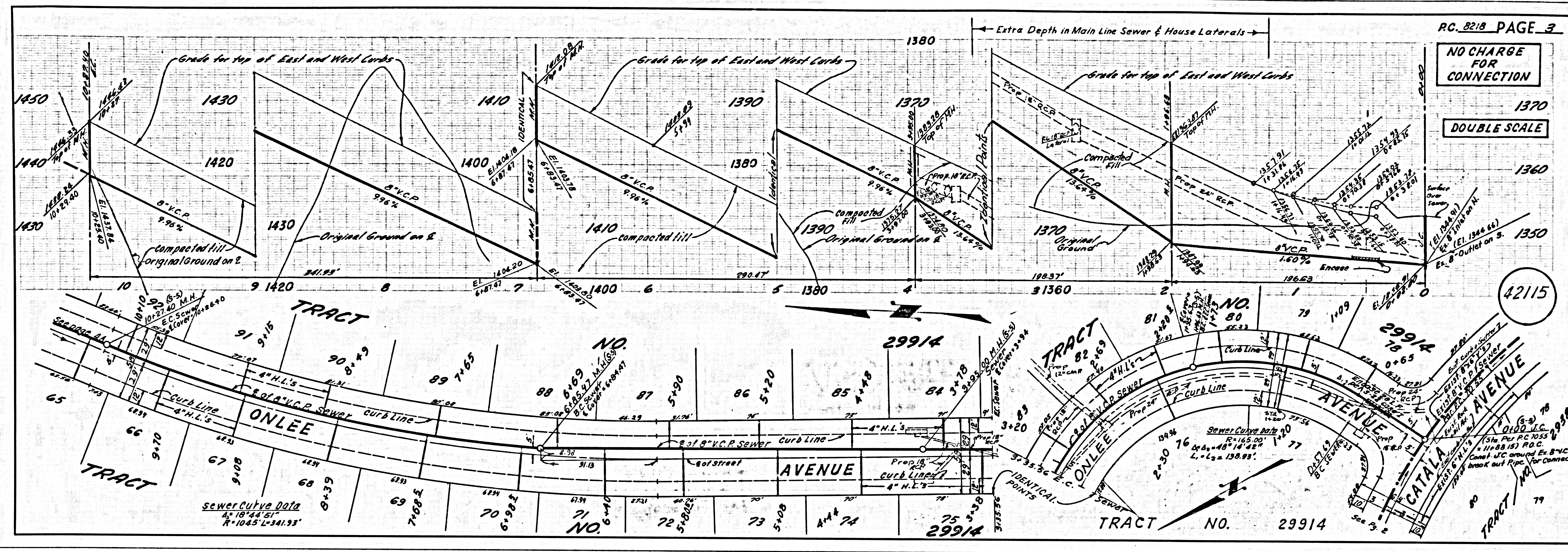
FOR LEGEND SEE PLAN NO. S-1  
 NOTE: GRADES TO WHICH THIS IMPROVEMENT IS TO BE CONSTRUCTED ARE SHOWN ON PLANS AND PROFILE. GREAT POINTS FOR TOP OF CURB, CENTER LINE OF STREETS, OR CENTER LINE OF ALLEYS ARE SHOWN BY CIRCLES ON PROFILES. ALL POINTS BETWEEN DESIGNATED POINTS THE GRADE SHALL BE ESTABLISHED AS TO CONFORM TO A STRAIGHT LINE GRADE BETWEEN SAID DESIGNATED POINTS. SECTIONS ARE IN FEET AND INCHES UNLESS OTHERWISE NOTED.  
 AS A CONDITION OF THE CONTRACT THE CONTRACTOR SHALL OBTAIN A PERMIT TO EXCAVATE IN COUNTY STREETS FROM THE L.A. COUNTY PUBLIC WORKS DEPARTMENT AND PAY A FEE TO THE COUNTY ENGINEER, BUREAU OF ROAD DEPT., DISTRICT OFFICE NO. 12, 444 N. MAIN ST., LOS ANGELES, CALIF. REGIONAL OFFICE, SUPPORT TO COVER THE COST OF CONSTRUCTION INSPECTION AND RECORD PLANS.  
 THE CONTRACTOR SHALL BE RESPONSIBLE FOR OBTAINING ALL NECESSARY PERMITS AND REPRESENTATION AS TO THE ACCURACY OF THE LOCATION OF OR THE EXISTENCE OR NON-EXISTENCE OF ANY UNDERGROUND UTILITY PIPE, OR STRUCTURE WITHIN THE LIMITS OF THE PROJECT. THE WORK HEREON IS TO BE DONE IN ACCORDANCE WITH THE STANDARD SPECIFICATIONS FOR THE STATE OF CALIFORNIA, DIVISION OF HIGHWAYS, THE SOUTH SPRING STREET, LOS ANGELES, CALIFORNIA.

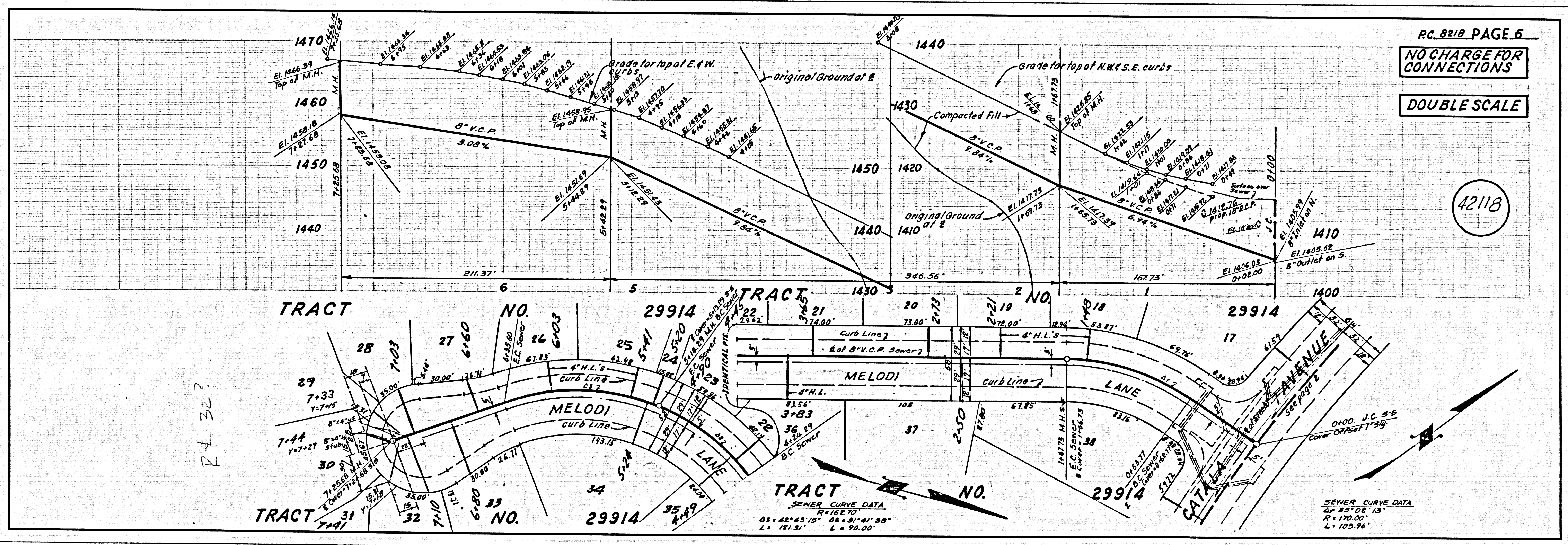
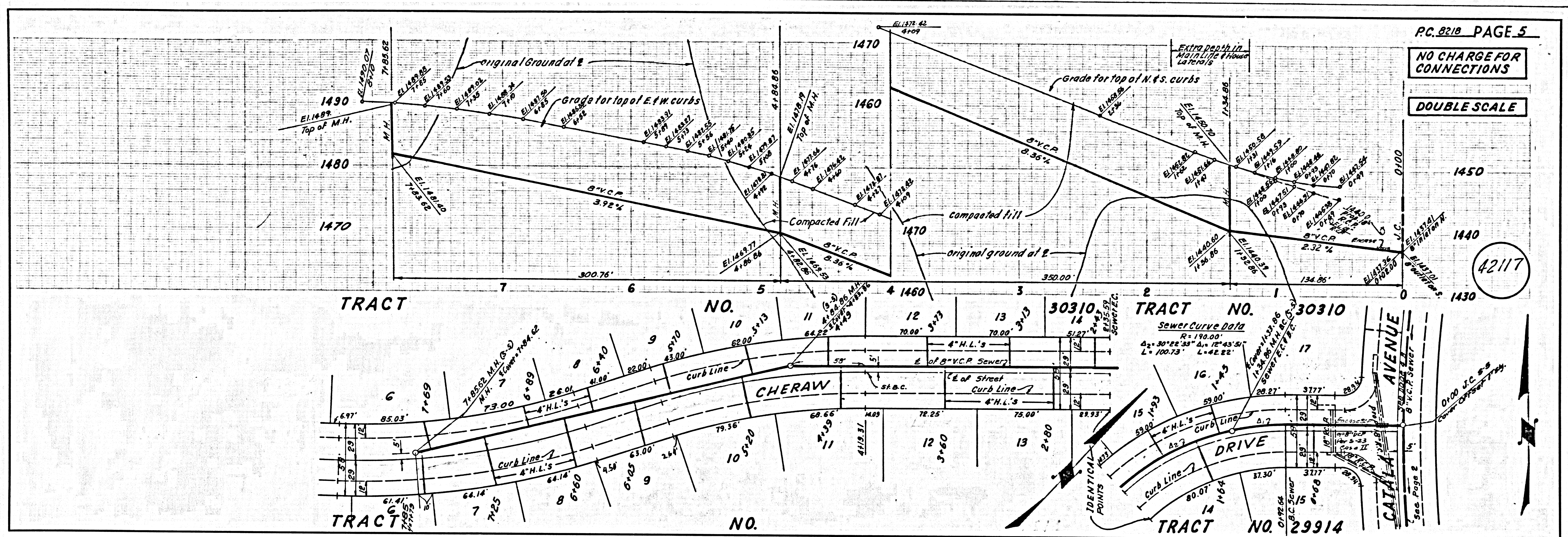
COUNTY OF LOS ANGELES, CALIFORNIA  
 JOHN A. LAMBIE, COUNTY ENGINEER J. D. PARKHURST, CHIEF ENGINEER  
 CO. ENG. REG. NO. 214 APPROVED [Signature] OFFICE ENGINEER

APPROVED BY [Signature]  
 CHECKED BY Ralph Schaffer 7/2/69  
 REG. C. E. NO. 13926

J. N. 0250.02

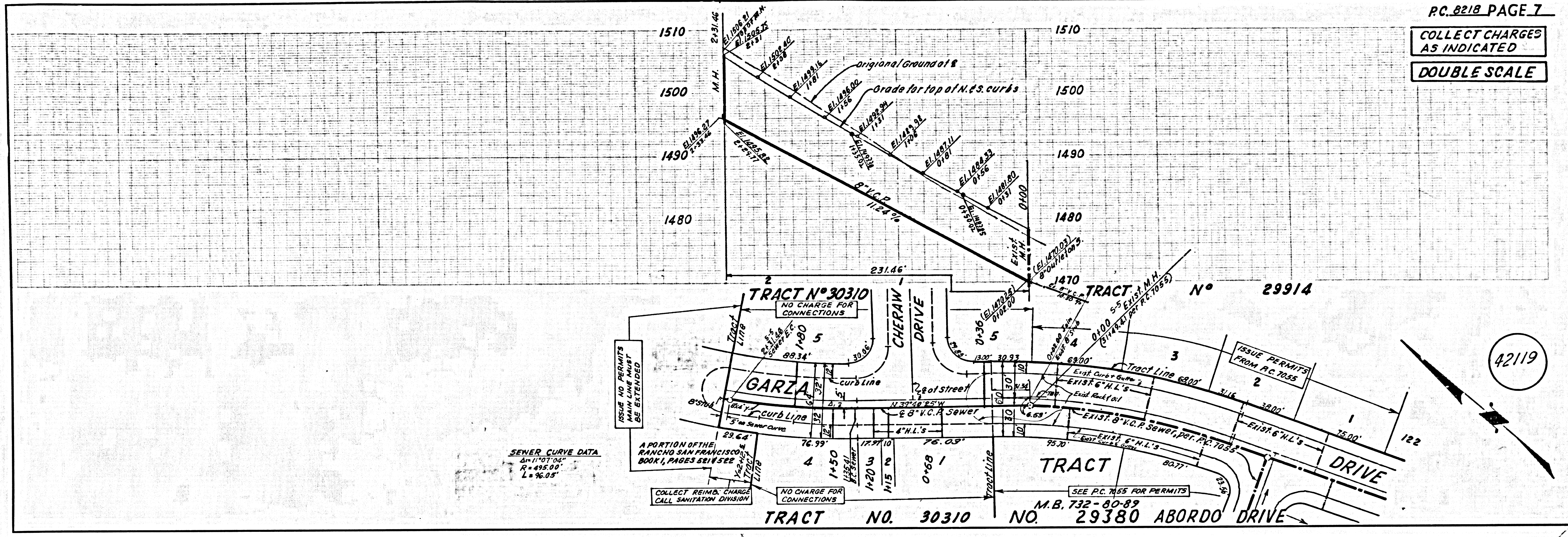






COLLECT CHARGES AS INDICATED

DOUBLE SCALE



ISSUE NO PERMITS  
IF ANY  
BE EXTENDED

SEWER CURVE DATA  
ΔH=11.07'  
R=495.00'  
L=96.05'

A PORTION OF THE  
RANCHO SAN FRANCISCO  
BOOK 1, PAGES 881 & 882

COLLECT REIMB. CHARGE  
CALL SANITATION DIVISION

NO CHARGE FOR  
CONNECTIONS

SEE P.C. 765 FOR PERMITS  
M.B. 732 - 80-89

ISSUE PERMITS  
FROM P.C. 765

42119