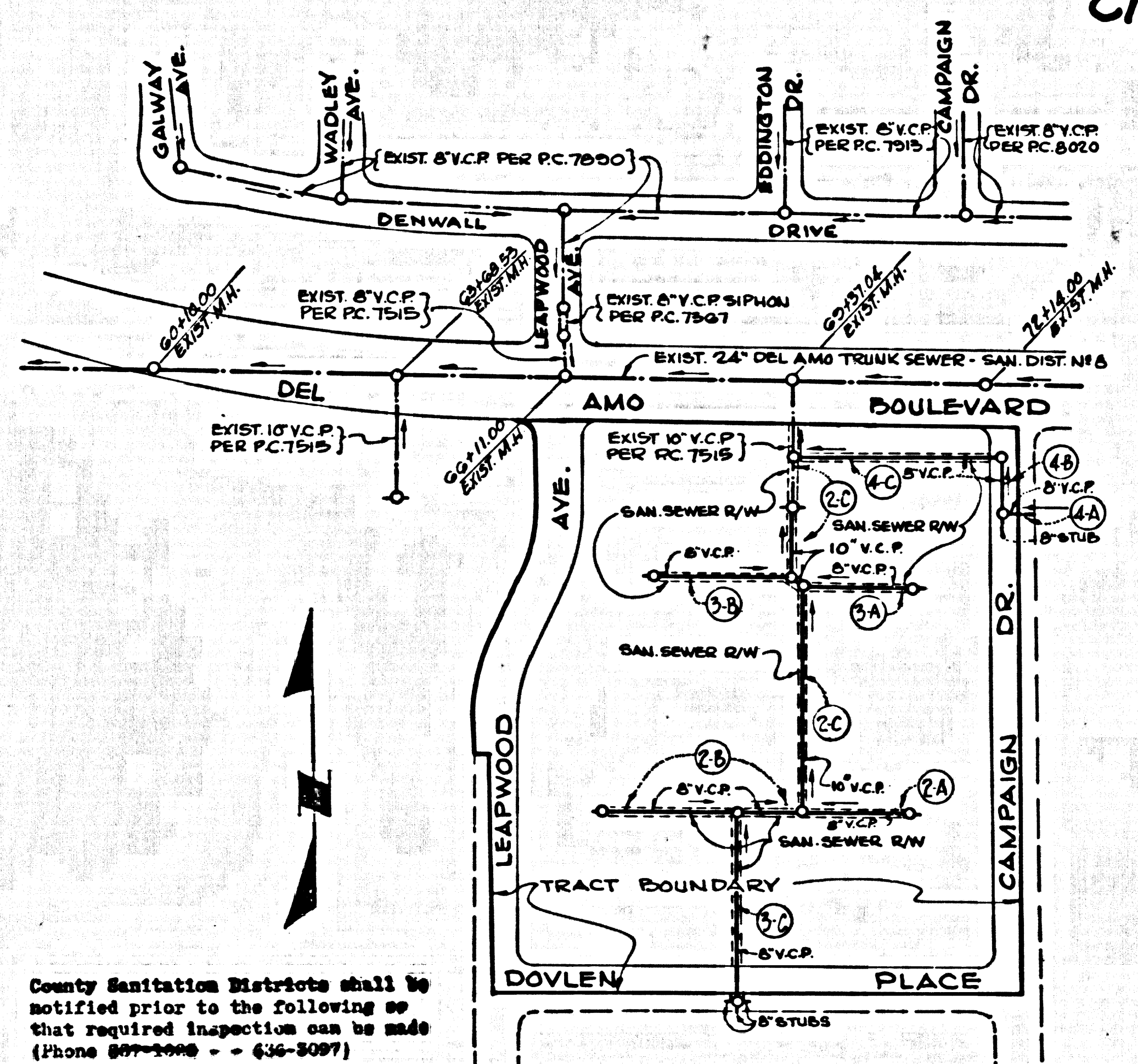


B.M. 8Y 231 ELEV. 12.966  
 LEAD SCREW IN CONC. BASE @ N.E. CORNER TOWER  
 AT 54' E AVALON BLVD. 11' W. TOWER S. OF VICTORIA  
 STREET.  
 GARDENA QUAD. 19.65



CITY OF CARSON BLDG. DIST. NO. 12.05

PROFILE ALIGNMENT AND GRADE OF P.C. 8222  
 SANITARY SEWERS PAGE 1

TRACT NO 30538

PRIVATE CONTRACT NO. 8222

W.S. 26  
 2 SHEETS; 4 PAGES

SCALE: VERT. 1" = 6'  
 HORIZ. 1" = 40'  
 NOVEMBER 29, 1968

PREPARED IN THE OFFICES OF  
 YODHEIS-TEAULDE-NEISON  
 13704 BEACH BOULEVARD  
 WESTMINSTER, CALIFORNIA

REG. C. E. NO. 18010

FOR LEGEND SEE PLAN NO. S-1

- NOTES:
1. PROVIDE STAKES ON THE PROPERTY LINE OR PROPERTY LINES PRODUCED AT RIGHT ANGLES TO THE SEWER LINE AT THE CENTER LINE OF EACH MANHOLE.
  2. NO REPRESENTATIVE OF THE CITY ENGINEER WILL SURVEY OR LAY OUT ANY PORTION OF THE WORK.
  3. THE PRIVATE ENGINEER SHALL FURNISH THE CITY ENGINEER WITH GRADE SHEETS AND STATIONING FOR ALL HOUSE LATERALS AND "T" OR "Y" BRANCHES AND SHALL PROVIDE STAKES FOR THEM AT THEIR PROPER LOCATIONS WITH STATIONING PLAINLY MARKED. ALL HOUSE LATERALS SHALL BE CONSTRUCTED IN A STRAIGHT ALIGNMENT AT RIGHT ANGLES TO THE MAIN LINE SEWER EXCEPT AS SHOWN ON THE PLANS. HOUSE LATERALS FROM CHIMNEYS SHALL NOT HAVE AN ANGLE OF LESS THAN 45° WITH THE MAIN LINE SEWER. ANY CHANGE IN ALIGNMENT SHALL BE REQUESTED IN WRITING BY THE PRIVATE ENGINEER.
  4. THE PRIVATE ENGINEER SHALL FURNISH THE HOUSE LATERAL DEPTH AT THE PROPERTY LINE BELOW THE TOP OF CURB ELEVATION FOR EACH HOUSE LATERAL ON THE GRADE SHEET.
  5. NO BYPASSES SHALL BE MADE IN THESE PLANS WITHOUT THE APPROVAL OF THE CITY ENGINEER.
  6. THE CONTRACTOR SHALL NOTIFY THE CONSTRUCTION DIVISION BY TELEPHONE, MADISON 9-4242, EXT. 8151, AT LEAST TWENTY-FOUR HOURS BEFORE STARTING ANY WORK UNDER THIS CONTRACT.
  7. ALL STRUCTURES SHALL BE EITHER BRICK MANHOLES PER S-4 OR PRECAST CONCRETE MANHOLES PER S-5 OR S-6, EXCEPT AS NOTED.
  8. USE STANDARD MANHOLE FRAMES AND COVERS, S-12, EXCEPT AS NOTED.
  9. MANHOLE TOPS IN UNIMPROVED RIGHTS-OF-WAY TO BE 32 INCHES ABOVE FINISHED GRADE.
  10. USE EXTRA STRENGTH PIPE. ALL PIPE IS STANDARD DIPY EXCEPT AS NOTED.
  11. VITRIFIED CLAY PIPE JOINTS SHALL BE TYPE "D", "F" OR "G" PER STD. SPECS. 208 E.
  12. IF A POWER POLE IS WITHIN THREE FEET OF THE SEWER, THE SEWER SHALL BE ENCASED, PER S-23, TWO FEET ON EACH SIDE FROM THE POINT OF INTERFERENCE.
  13. IF DURING THE COURSE OF CONSTRUCTION IT IS DETERMINED THAT THERE IS LESS THAN FOUR FEET OF COVER OVER THE TOP OF A MAIN LINE OR HOUSE LATERAL V.C.P. SEWER WHICH IS NOT INDICATED ON THE PLANS, THE PIPE SHALL BE ENCASED PER S-25, UNLESS OTHERWISE APPROVED BY THE CITY ENGINEER.
  14. HOUSE LATERALS TO BE CONSTRUCTED WITH 1/4" RISE PER FT. TO PROPERTY LINE.
  15. RESURFACE ALL TRENCHES WITHIN PAVED AREAS TO MEET L.A. COUNTY ROAD DEPT. OR CALIFORNIA STATE HIGHWAY REQUIREMENTS IN ACCORDANCE WITH PERMITS.
  16. SEWERS TO BE TESTED FOR LEAKAGE PER SECTION 206.1.3.2 OF THE STANDARD SPECIFICATIONS.
  17. REFER TO SECTION 7-10-4.1 OF THE STANDARD SPECS., REGARDING SAFETY OBSTACLES.
  18. SPECIAL BACKFILL IN DESIGNATED AREAS:  
 (A) BACKFILL TRENCH AND REPLACE OTHER EARTH REMOVED SO AS TO ACHIEVE THE NATURAL OR FINISHED GRADES AND SLOPES SHOWN ON THE GRADING PLAN APPROVED FOR THIS TRACT BY THE GRADING AND SAFETY DIVISION.  
 (B) ALL BACKFILL AND EARTH REPLACED SHALL BE COMPACTED TO A MINIMUM OF 90% OF MAXIMUM DENSITY PER A.S.T.M. STANDARD METHOD OF TEST DESIGNATED BY NUMBER. ACCEPTABLE COMPACTION OF SUCH COMPACTION SHALL BE SUBMITTED TO THE CONSTRUCTION DIVISION.
  19. THE FOLLOWING CITY ENGINEER STD. PLANS APPLY TO THIS PROJECT:  
 (A) LEGEND 3-1  
 (B) MIN. EXCAV. SAFETY REQUIREMENTS 3-2  
 (C) BRICK MANHOLES 3-3  
 (D) NON-REIN. PRECAST CONC. MANHOLES 3-4  
 (E) MANHOLE FRAMES AND COVERS 3-5  
 (F) MANHOLE STEPS 3-6  
 (G) DEDDING FOR SEWER PIPE 3-7  
 (H) CAPPING & BRICKWORK 3-8  
 (I) WYE & TEE SUPPORT 3-9  
 (J) ALLOWABLE TRENCH WIDTH 3-10  
 (K) TRAP MANHOLE 3-11  
 (L) MANHOLE CASTING 3-12  
 (M) SUPPORT PROTECTION 3-13
  20. TEE OR WYE BRANCHES MAY BE USED FOR CONNECTIONS TO MAIN LINE SEWERS, EXCEPT AS NOTED.
  21. ALL JOINTS BETWEEN CAST IRON PIPE AND VITRIFIED CLAY PIPE SHALL BE MADE WITH A RUBBER SLEEVE JOINT, TYPE "C" OR "D" WITH BUSHING IF NECESSARY PER STANDARD SPECIFICATIONS, SECTION 208 E.

**NOTICE TO CONTRACTORS**  
 THE EXISTENCE AND LOCATION OF ANY UNDERGROUND UTILITY PIPES OR STRUCTURES SHOWN ON THESE PLANS ARE OBTAINED BY A SEARCH OF THE AVAILABLE RECORDS. TO THE BEST OF MY KNOWLEDGE THERE ARE NO EXISTING UTILITIES EXCEPT AS SHOWN ON THESE PLANS.  
 THE CONTRACTOR IS REQUIRED TO TAKE DUE PRECAUTIONARY MEASURES TO PROTECT THE UTILITY LINES SHOWN AND ANY OTHER LINES NOT OF RECORD OR NOT SHOWN ON THESE PLANS.

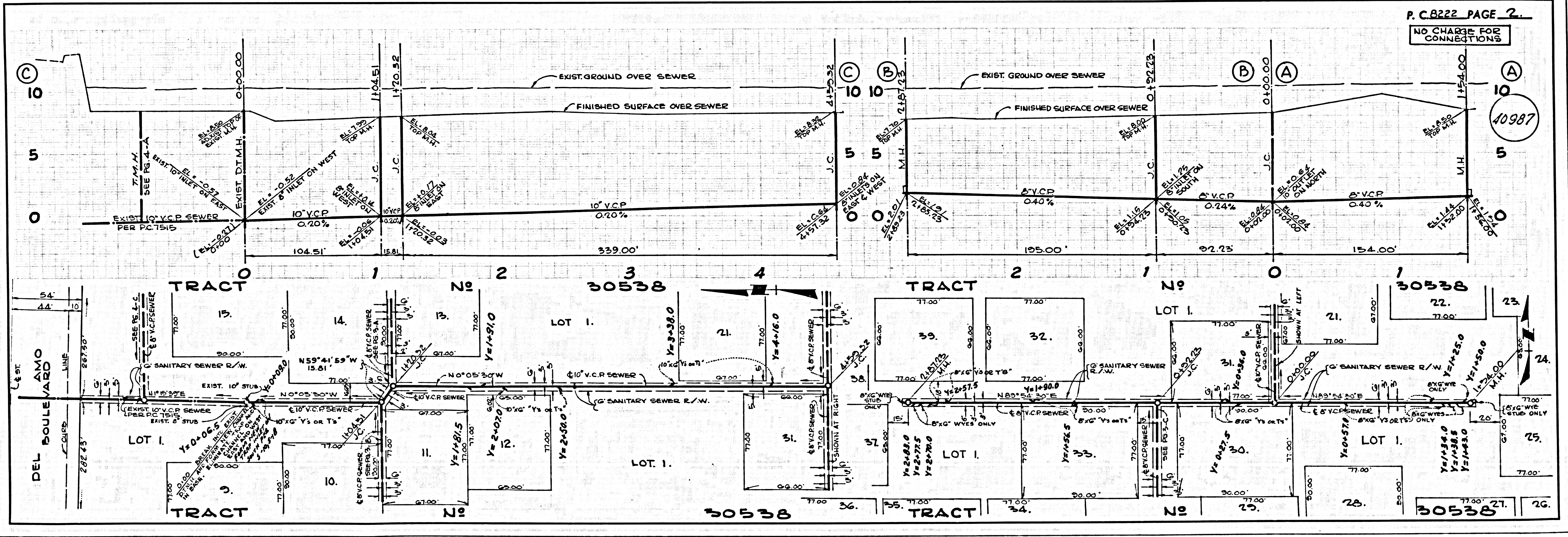
County Sanitation Districts shall be notified prior to the following so that required inspection can be made (Phone 897-5000 - 436-3097)  
 Acceptance of the project:  
 In connection with the disposal of industrial wastes shall be made to persons shown on these drawings without written permission from the Chief Engineer and General Manager of the County Sanitation Districts.

GARY L. MCCABE R.C.E. 18,010 11-29-68 DATE

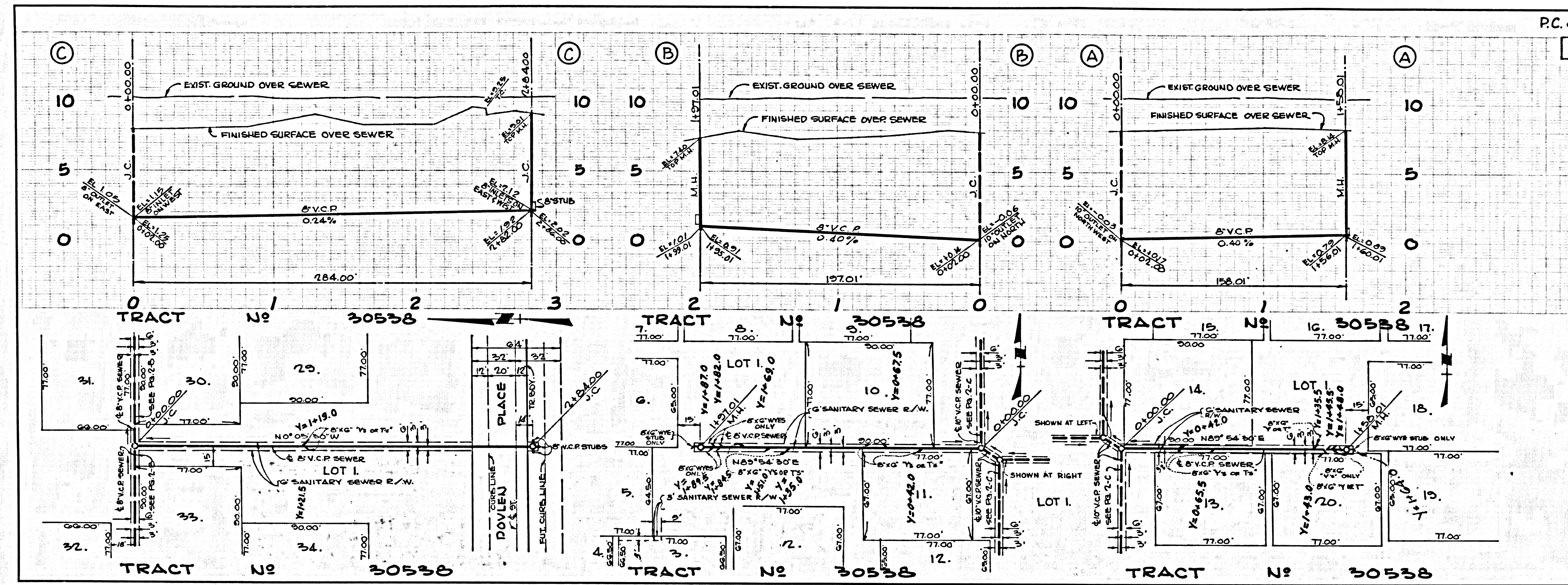
INDEX MAP  
 SCALE: 1" = 200'  
 P.C. 8222  
 NOTE: FIGURES IN CIRCLES INDICATE PAGE NUMBERS.

**COLLECT CHARGES AS INDICATED**

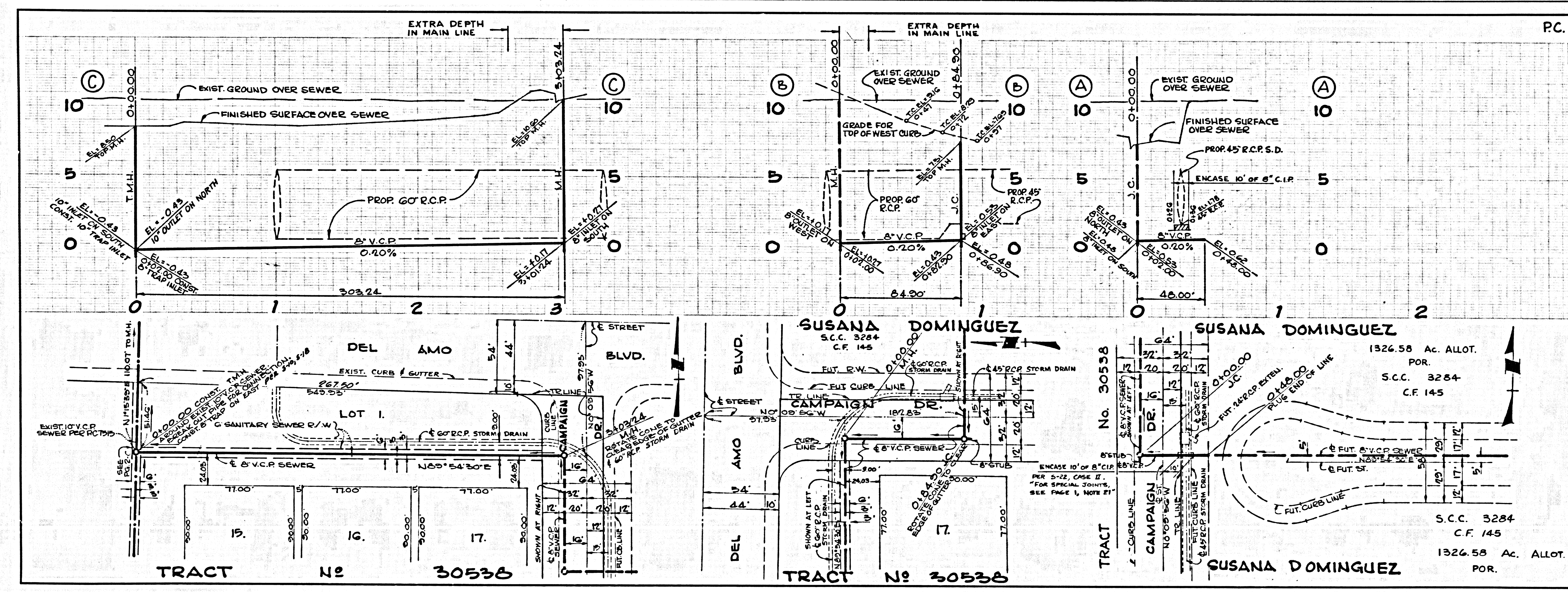
CITY OF CARSON, CALIFORNIA  
 JOHN A. LAMBE, CITY ENGINEER  
 J. D. PARKHURST, CHIEF ENGINEER  
 APPROVED BY: [Signature] REGIONAL ENGINEER  
 APPROVED BY: [Signature] CHIEF ENGINEER  
 CHECKED BY: [Signature] 11/11/68  
 REG. C.E. NO. 10653







PC. 8222 PAGE 3.  
NO CHARGE FOR CONNECTIONS  
40988



PC. 8222 PAGE 4.  
NO CHARGE FOR CONNECTIONS  
40989

L.A. COUNTY SEWER SHED NO. 2. RESTRICTED SURVEY OR.