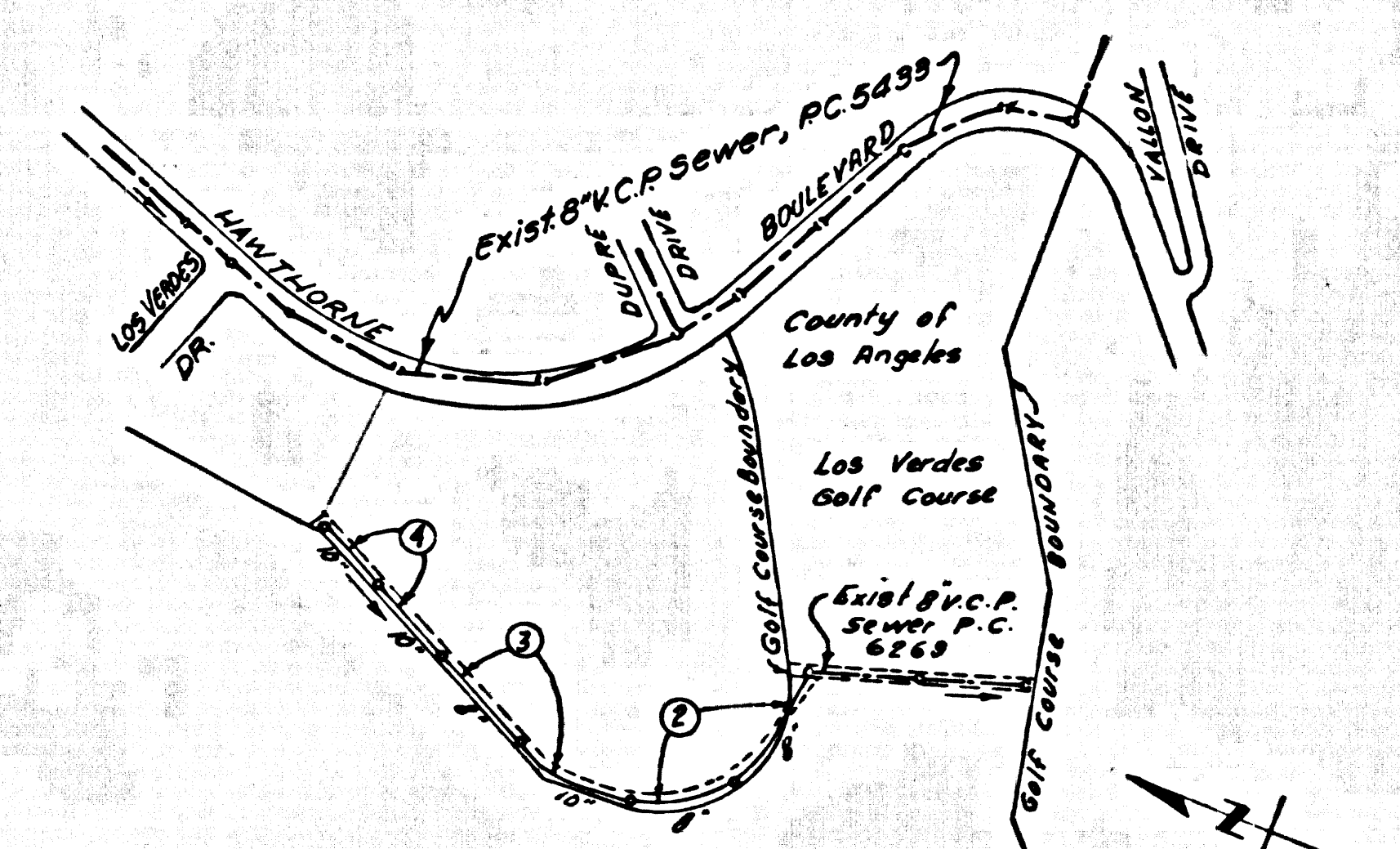


B.M. P.V. 34 ELEV. 606.870  
 C.S. Brass Cap Monument Set Flush  
 Stamped P. 32 (F.B. 2290-42), 2"  
 White Top Marker pipe 2" 5' or  
 Monument, F.B. 2290-146  
 Palms Verdes QUAD. 19 52



NOTE: Number in circles represent page numbers

INDEX MAP  
 P.C. No. 8223  
 Scale 1"=600'

REVISION NO. 1 - Feb. 21, 1969  
 Revised M.H. Location. M.H. moved from Sta. 19+35.82 to Sta. 19+15.97  
 APPROVED *James A. Valverde* 10653  
 Office of County Engineer, R.C.E. No.

No connections for the disposal of industrial wastes shall be made to sewers shown on these drawings without written permission from the Chief Engineer and General Manager of the County Sanitation Districts.

NOTE:  
 ISSUE NO PERMITS  
 UNTIL R.I.W. IS RECORDED

DOUBLE SCALE  
 LOMITA BLDG. DIST. NO. 12

PROFILE ALIGNMENT AND GRADE OF  
 SANITARY SEWERS PAGE 1  
 TO BE CONSTRUCTED IN

R.I.W. NORTH OF LOS VERDES GOLF COURSE

PRIVATE CONTRACT NO. 8223

W.S. 27

2 SHEETS, 4 PAGES  
 SCALE: 1"=4' HORIZ. 1"=4' VERT. DECEMBER, 1968

40781

PREPARED IN THE OFFICES OF  
 SIKAND ENGINEERING ASSOCIATES  
 1001 EAST COLORADO BLVD. PASADENA, CALIFORNIA  
 JOHN R. YARBRO  
 REG. C.E. NO. 5112

FOR LEGEND SEE PLAN NO. S-1

- NOTES:
1. PROFILE STAGES ON THE PROPERTY LINE OR PROPERTY LINES PROVIDED AS RIGHT ANGLES TO THE SEWER LINE AT THE CENTER LINE OF EACH MANHOLE.
  2. NO REPRESENTATIVE OF THE COUNTY ENGINEER WILL SURVEY OR LAY OUT ANY PORTION OF THE WORK.
  3. THE PRIVATE ENGINEER SHALL FURNISH THE COUNTY ENGINEER WITH GRADE SHEETS AND STATIONING FOR ALL HOUSE LATERALS AND 7" OR 8" MANHOLES AND SHALL PROVIDE STAKES FOR THEM AT THESE PROPER LOCATIONS WITH STATIONING PLAINLY MARKED. ALL HOUSE LATERALS SHALL BE CONSTRUCTED IN A STRAIGHT ALIGNMENT AT RIGHT ANGLES FROM THE MAIN LINE SEWER EXCEPT AS SHOWN ON THE PLANS. HOUSE LATERALS FROM CHIMNEYS SHALL NOT HAVE AN ANGLE OF LESS THAN 45° WITH THE MAIN LINE SEWER. ANY CHANGE IN ALIGNMENT SHALL BE REQUESTED BY WRITING BY THE PRIVATE ENGINEER.
  4. THE PRIVATE ENGINEER SHALL FURNISH THE HOUSE LATERAL DEPTH AT THE PROPERTY LINE BELOW THE TOP OF CURB ELEVATION FOR EACH HOUSE LATERAL ON THE GRADE SHEET.
  5. NO REVISIONS SHALL BE MADE IN THESE PLANS WITHOUT THE APPROVAL OF THE COUNTY ENGINEER.
  6. THE CONTRACTOR SHALL NOTIFY THE CONSTRUCTION DIVISION BY TELEPHONE, MADISON 9-4747, EXT. 8848, AT LEAST TWENTY-FOUR HOURS BEFORE STATING ANY WORK UNDER THIS CONTRACT.
  7. ALL STRUCTURES SHALL BE BRICK MANHOLES PER S-3
  8. 4" OR 6" BRANCHES MAY BE USED FOR CONNECTIONS TO MAIN LINE SEWERS EXCEPT AS NOTED.
  9. SEWERS TO BE TESTED FOR LEAKAGE PER SEC. 306-2, 5, 7 OF THE STD. SPEC.
  10. MANHOLE RINGS IN UNIMPROVED AREAS OR TO BE IN AREAS ABOVE FINISHED GRADE.
  11. USE EXTRA STRENGTH PIPE, ALL PIPE IS STANDARD DEPTH EXCEPT AS NOTED.
  12. VITRIFIED CLAY PIPE JOINTS SHALL BE TYPE "D"; 12" OR 6" PER STD. SPEC. SEC. 308-2
  13. WHERE EVER GROUND WATERS IS ENCOUNTERED DURING THE CONSTRUCTION OF THE SEWERS, THE V.C.P. JOINTS SHALL BE OF JOINT-COMPOUND PER SPEC., SECS. 30 & 46, OR MECHANICAL JOINTS PER SPEC., SEC. 94-1
  14. IF A POWER POLE IS WITHIN THREE FEET OF THE SEWER, THE SEWER SHALL BE ENCASED, PER S-23 TWO FEET ON EITHER SIDE FROM THE POINT OF INTERFERENCE.
  15. IF DURING THE COURSE OF CONSTRUCTION IT IS DETERMINED THAT THERE IS LESS THAN FOUR FEET OF COVER OVER THE TOP OF A MAIN LINE OR HOUSE LATERAL V.C.P. SEWER WHICH IS NOT INDICATED ON THE PLANS, THE PIPE SHALL BE ENCASED PER S-27, CAME IN, UNLESS OTHERWISE APPROVED BY THE COUNTY ENGINEER.
  16. HOUSE LATERALS TO BE CONSTRUCTED WITH INVERTS AT PROPERTY LINE. . . . FEET BELOW CURB GRADE EXCEPT AS NOTED.
  17. RESURFACE ALL TRENCHES WITHIN PAVED AREAS TO MEET L.A. COUNTY ROAD DEPT. OR CALIFORNIA STATE HIGHWAY REQUIREMENTS IN ACCORDANCE WITH PERMITS.
  18. REFER TO SEC. 7-10-4.1 OF THE STD. SPEC., REGARDING SAFETY WARNERS.

THE FOLLOWING LATEST REVISED STANDARD PLANS OR PER IN THE OFFICE OF THE COUNTY ENGINEER SHALL APPLY IN THE EVENT OF CONFLICT:

LEGEND

|   |      |
|---|------|
| MIN. PUBLIC SAFETY REQUIREMENTS         | S-1  |
| BRICK MANHOLE                           | S-2  |
| NON-REINFORCED PRECAST CONCRETE MANHOLE | S-3  |
| REINFORCED PRECAST CONCRETE MANHOLE     | S-4  |
| MANHOLE FRAME AND COVER                 | S-5  |
| MANHOLE STEP                            | S-6  |
| BEDDING FOR SEWER PIPE                  | S-7  |
| CRADLING AND ENCASUREMENT               | S-8  |
| WYE OR TEE SUPPORT                      | S-9  |
| ALLOWABLE TRENCH WIDTHS                 | S-10 |

COLLECT CHARGES AS INDICATED

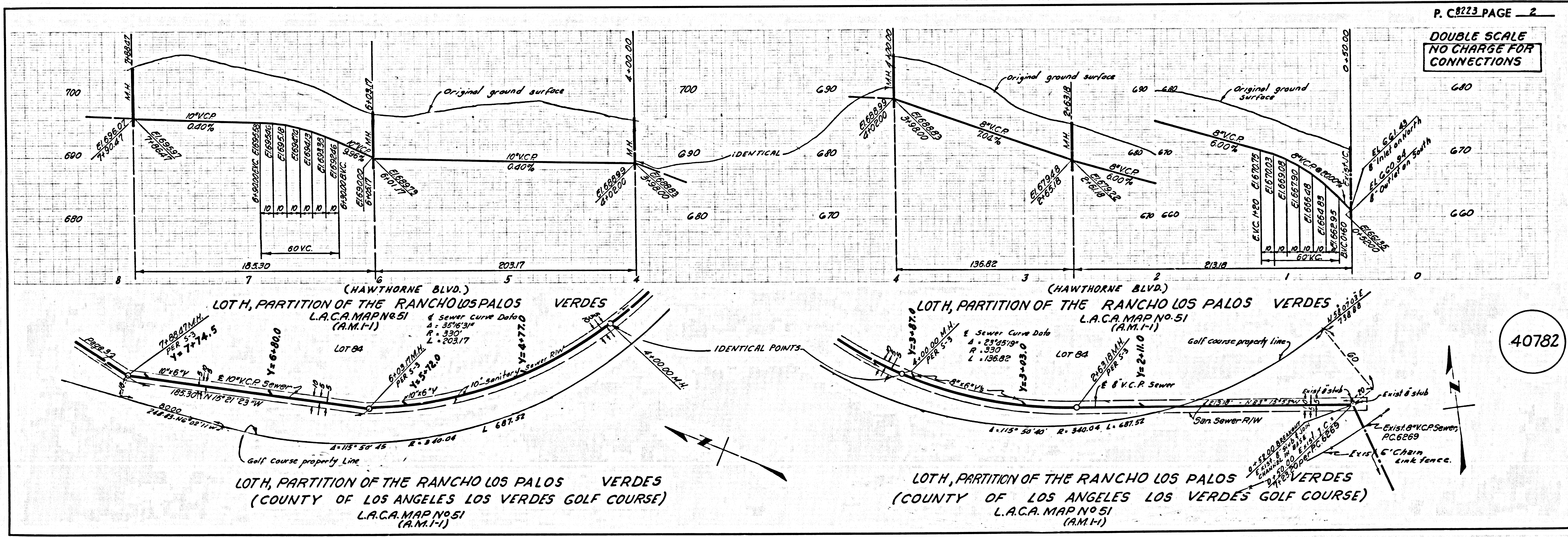
County Sanitation Districts shall be notified prior to the following so that required inspection can be made (Phone 800-2097 - 636-2097)

GRADES TO WHICH THIS IMPROVEMENT IS TO BE CONSTRUCTED ARE SHOWN ON PLANS AND PROFILES. GRADE POINTS FOR TOP OF CURB, CENTER LINE OF STREETS, OR CENTER LINE OF ALLEYS ARE SHOWN BY CIRCLES ON PROFILES. AT ALL POINTS BETWEEN DESIGNATED POINTS THE GRADE SHALL BE ESTABLISHED SO AS TO COMPLY TO A STRAIGHT LINE DRAWN BETWEEN SAID DESIGNATED POINTS. ELEVATIONS ARE IN FEET ABOVE U.S.C. & G.S. SEA LEVEL DATUM OF 1929. THE EXISTING AND THE DATA HEREON ARE NEAREST AVAILABLE AND SHALL BE PRESUMED TO BE CORRECT UNLESS OTHERWISE NOTED. WORK SHALL BE CONSTRUCTED ACCORDING TO STANDARD SPECIFICATIONS AND SHALL BE SUBJECT TO INSPECTION AND APPROVAL BY THE COUNTY ENGINEER. BEFORE WORK CAN BE STARTED, THE CONTRACTOR MUST OBTAIN A PERMIT TO EXCAVATE IN COUNTY STREETS FROM THE L.A. COUNTY ROAD DEPT., DISTRICT OFFICE NO. 1, AND PAY A FEE TO THE COUNTY ENGINEER, ROOM 303, COUNTY ENGINEER'S BUILDING, 100 WEST SECOND STREET OR PALMS VERDES, KENTMERE PLAZA, REGIONAL OFFICE, SUFFICIENT TO COVER THE COST OF THE CONSTRUCTION INSPECTION AND RECORD PLANS. APPROVAL OF THIS PLAN BY THE COUNTY OF LOS ANGELES DOES NOT CONSTITUTE A REPRESENTATION AS TO THE ACCURACY OF THE LOCATION OF OR THE EXISTENCE OR NON-EXISTENCE OF ANY UNDERGROUND UTILITY PIPE, OR STRUCTURE WITHIN THE LIMITS OF THIS PROJECT. THIS NOTE APPLIES TO ALL PAGES. IF WORK IS TO BE DONE IN A STATE HIGHWAY, A PERMIT MUST BE OBTAINED FROM THE STATE OF CALIFORNIA, DIVISION OF HIGHWAYS, 120 SOUTH SPRING STREET, LOS ANGELES, CALIFORNIA.

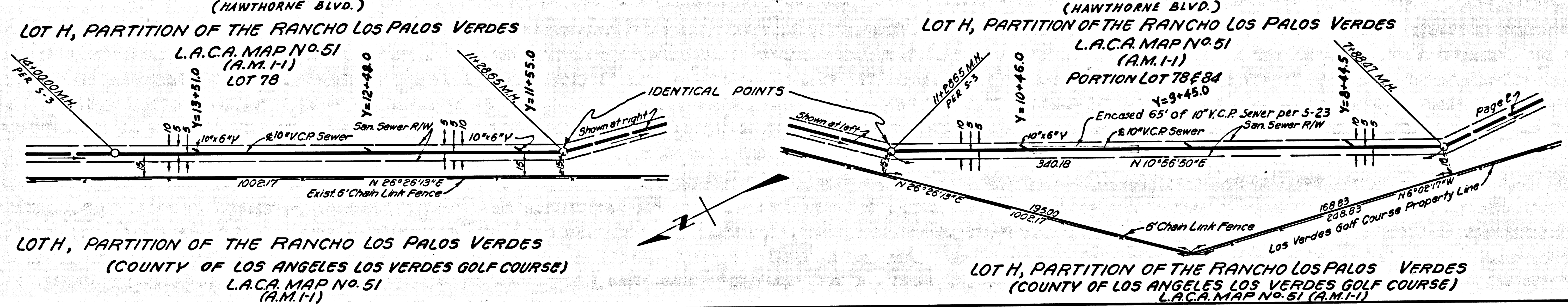
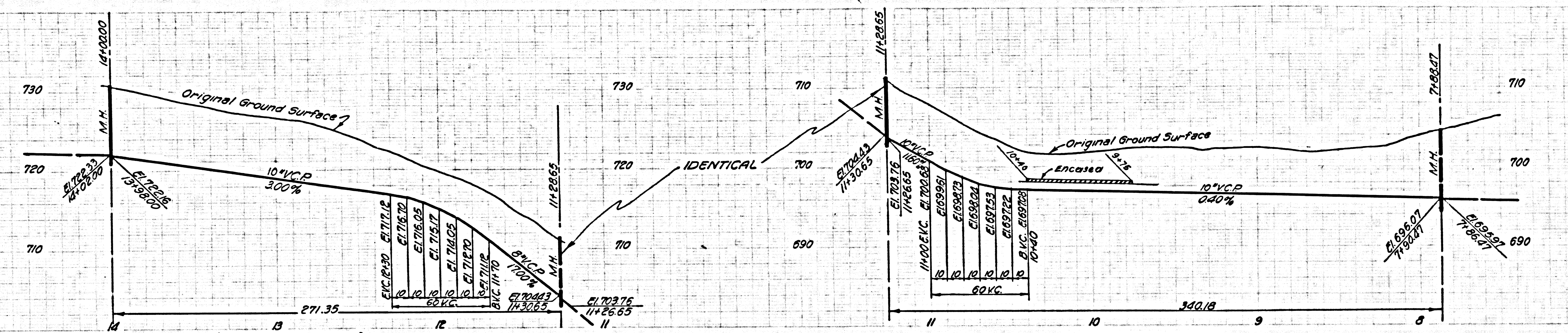
COUNTY OF LOS ANGELES, CALIFORNIA  
 JOHN A. LAMBIE, COUNTY ENGINEER J. D. PARKHURST, CHIEF ENGINEER  
 APPROVED BY: *Robert Williams* REGIONAL ENGINEER APPROVED BY: *Ed. G. Williams* OFFICE ENGINEER

CHECKED BY: *Bernard J. Valverde* 1/30/69  
 REG. C.E. NO. 10653

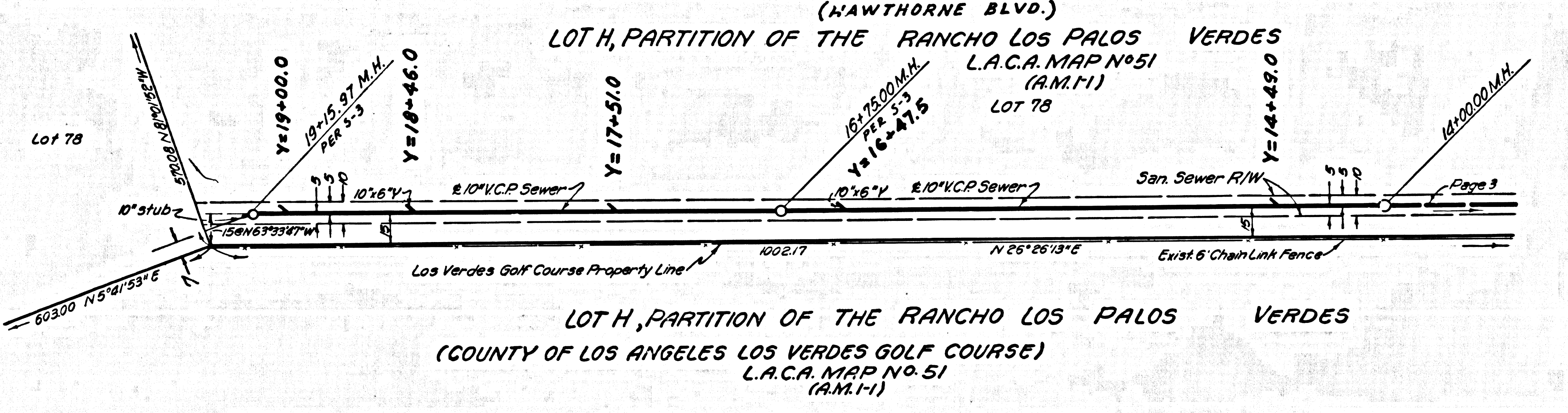
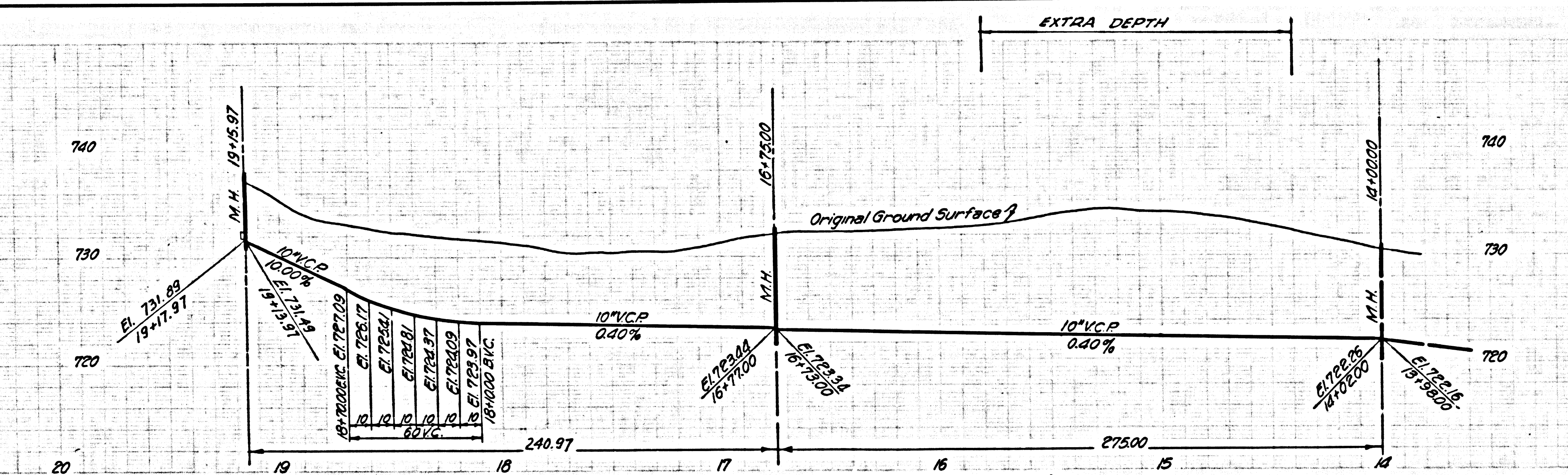
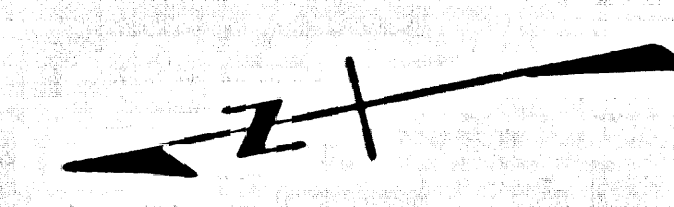
J.N. 0369.53







40783



40784

