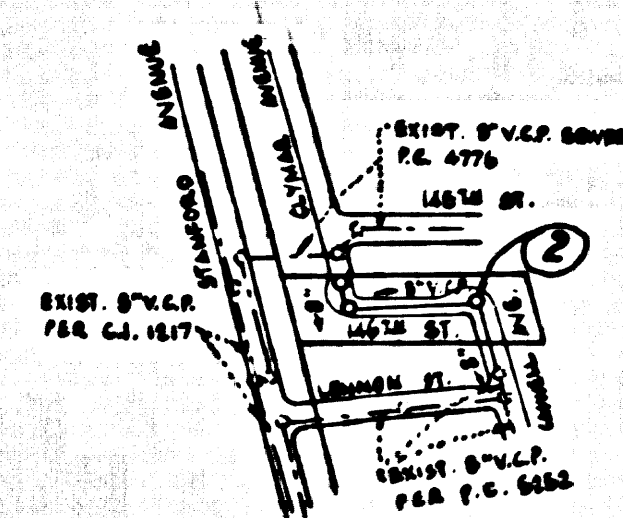


B.M. BY 1084 ELEV. 119.550
 L & T. FOOTING N.W. COR. HIGH TENSION LINE 65' ± @ 1/4" & ROSECRANS 35' ± E/O & STANFORD, TOWER # 1525
 GARDENA QUAD. 1965 adj.



INDEX MAP
 TRACT NO. 26962
 SCALE: 1" = 600'

THE FOLLOWING LATEST REVISED STANDARD PLANS ON FILE IN THE OFFICE OF THE COUNTY ENGINEER SHALL APPLY IN THE CONSTRUCTION OF THIS PROJECT:

Legend	S-1
Min. Public Safety Requirements	S-2
Brick Manhole	S-3
Mon Reinforced Precast Concrete Manhole	S-5
Reinforced Precast Concrete Manhole	S-6
Manhole Frame and Cover	S-15
Manhole Step	S-17
Bedding for Sewer Pipe	S-21
Cradling and Encasement	S-23
Wye or Tee Support	S-26
Allowable Trench Widths	S-33

LENNOX BLDG. DIST. NO. 7

- PROVIDE STAKES ON THE PROPERTY LINE OR PROPERTY LINES PRODUCED AT RIGHT ANGLES TO THE SEWER LINE AT THE CENTER LINE OF EACH MANHOLE.
- NO REPRESENTATIVE OF THE COUNTY ENGINEER WILL SURVEY OR LAY OUT ANY PORTION OF THE WORK.
- THE PRIVATE ENGINEER SHALL FURNISH THE COUNTY ENGINEER WITH GRADE SHEETS AND STATIONING FOR ALL HOUSE LATERALS 4" IN DIAMETER AND SHALL PROVIDE STAKES FOR THEM AT THEIR PROPER LOCATIONS WITH STATIONING PLAINLY MARKED. ALL HOUSE LATERALS SHALL BE CONSTRUCTED IN A STRAIGHT ALIGNMENT AT RIGHT ANGLES FROM THE MAIN LINE SEWER EXCEPT AS SHOWN ON THE PLANS. HOUSE LATERALS FROM CHIMNEYS SHALL NOT HAVE AN ANGLE OF LESS THAN 45° WITH THE MAIN LINE SEWER. ANY CHANGE IN ALIGNMENT SHALL BE REQUESTED IN WRITING BY THE PRIVATE ENGINEER.
- THE PRIVATE ENGINEER SHALL FURNISH THE HOUSE LATERAL DEPTH AT THE PROPERTY LINE BELOW THE TOP OF CURB ELEVATION FOR EACH HOUSE LATERAL ON THE GRADE SHEET.
- NO REVISIONS SHALL BE MADE IN THESE PLANS WITHOUT THE APPROVAL OF THE COUNTY ENGINEER.
- THE CONTRACTOR SHALL NOTIFY THE CONSTRUCTION DIVISION BY TELEPHONE, MAILBOX #407, EXT. 8158, AT LEAST TWENTY-FOUR HOURS BEFORE STARTING ANY WORK UNDER THIS CONTRACT.
- ALL STRUCTURES SHALL BE EITHER BRICK OR PRECAST CONCRETE MANHOLES PER S-3 OR S-5, EXCEPT AS NOTED.
- 4" IN DIAMETER MANHOLES SHALL BE USED FOR CONNECTIONS TO MAINLINE SEWERS, EXCEPT AS NOTED.
- MANHOLE TOPS IN UNIMPROVED RIGHTS-OF-WAY TO BE SIX INCHES ABOVE FINISHED GRADE.
- USE EXTRA STRENGTH PIPE. ALL PIPE IS STANDARD DEPTH EXCEPT AS NOTED.
- VITRIFIED CLAY PIPE JOINTS SHALL BE TYPE "B", OR "C" PER STD. SPECS. SEC. 506-2.
- IF A POWER POLE IS WITHIN THREE FEET OF THE SEWER, THE SEWER SHALL BE ENCASED, PER S-23, TWO FEET ON EACH SIDE FROM THE POINT OF INTERFERENCE.
- IF DURING THE COURSE OF CONSTRUCTION IT IS DETERMINED THAT THERE IS LESS THAN FOUR FEET OF COVER OVER THE TOP OF A MAIN LINE OR HOUSE LATERAL V.C.P. SEWER WHICH IS NOT INDICATED ON THE PLANS, THE PIPE SHALL BE ENCASED PER S-23, UNLESS OTHERWISE APPROVED BY THE COUNTY ENGINEER.
- HOUSE LATERALS TO BE CONSTRUCTED WITH INVERTS AT PROPERTY LINE 4 FEET BELOW CURB GRADE EXCEPT AS NOTED.
- RESURFACE ALL TRENCHES WITHIN PAVED AREAS TO MEET L.A. COUNTY ROAD DEPT. OR CALIFORNIA STATE HIGHWAY REQUIREMENTS IN ACCORDANCE WITH PERMITS.
- SEWERS TO BE TESTED FOR LEAKAGE PER SECTION 506-2.5.7 UNIFORM STANDARD SPECIFICATIONS.
- REFER TO SECTION 7-10.4.1 OF THE STANDARD SPECIFICATIONS REGARDING SAFETY ORDERS.

County Sanitation Districts shall be notified prior to the following so that required inspection can be made (Phone 699-8000 - 636-8097)

Adoptance of the project.
 No connections for the disposal of industrial wastes shall be made to sewers shown on these drawings without written permission from the Chief Engineer and General Manager of the County Sanitation Districts.

COLLECT CHARGES AS INDICATED

NOTICE TO CONTRACTOR
 The existence and location of any underground utility lines or structures shown on these plans are shown by a search of the available records. To the best of my knowledge there are no existing utilities except as shown on these plans. The contractor is required to take due precautionary measures to protect the utility lines shown and any other lines not of record or not shown on these plans.
 Clark M. Leonard
 CLARK M. LEONARD R.C.E. 15167

PROFILE, ALIGNMENT AND GRADE OF **P.C. 8224**
SANITARY SEWERS PAGE 1
 TO BE CONSTRUCTED IN

TRACT NO. 26962
 PRIVATE CONTRACT NO. 8224

W.S. 26
 1 SHEET; 2 PAGES
 SCALE: HORIZ. 1" = 40' VERT. 1" = 4'
 NOVEMBER, 1960
 PREPARED IN THE OFFICES OF
LANCO ENGINEERING
 Clark M. Leonard
 REG. C. E. NO. 15167

FOR LEGEND SEE PLAN NO. S-1

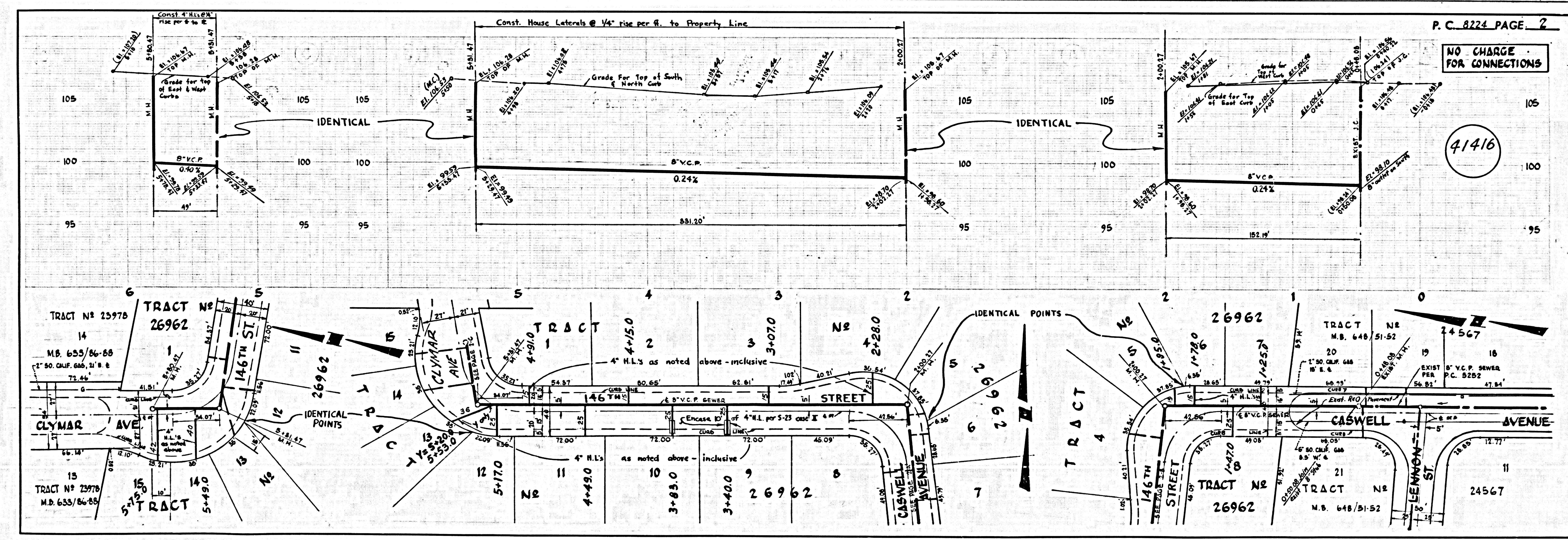
NOTES:
 GRADES TO WHICH THE IMPROVEMENT IS TO BE CONSTRUCTED ARE SHOWN ON PLANS AND PROFILES. GRADE POINTS FOR TOP OF CURB, CENTER LINE OF STREETS, OR CENTER LINE OF ALLEYS ARE SHOWN BY CIRCLES ON PROFILES. AT ALL POINTS BETWEEN DESIGNATED POINTS THE GRADE SHALL BE ESTABLISHED SO AS TO CONFORM TO A STRAIGHT LINE DRAWN BETWEEN SAID DESIGNATED POINTS. WORK SHALL BE CONSTRUCTED ACCORDING TO STANDARD SPECIFICATIONS FOR PUBLIC WORKS CONSTRUCTION AND COUNTY ENGINEER'S SPECIAL PROVISIONS DATED JAN. 2, 1959, AS REVISED AND AMENDED BY THE BOARD OF SUPERVISORS OF THE COUNTY OF LOS ANGELES. BEFORE WORK CAN BE STARTED, THE CONTRACTOR MUST OBTAIN A PERMIT TO OCCUPY THE COUNTY STREETS FROM THE COUNTY ROAD DEPT., DISTRICT OFFICE NO. 7 AND PAY TO THE COUNTY ENGINEER, ROOM 303, COUNTY ENGINEERING BUILDING, 100 WEST SECOND STREET ON PLANS OF LOS ANGELES, A PERMIT TO OCCUPY THE COUNTY STREETS TO COVER THE COST OF CONSTRUCTION INSPECTION AND RECORD PLANS. APPROVAL OF THIS PLAN BY THE COUNTY OF LOS ANGELES DOES NOT CONSTITUTE A REPRESENTATION AS TO THE ACCURACY OF THE LOCATION OR OF THE EXISTENCE OR NON-EXISTENCE OF ANY UNDERGROUND UTILITY PIPE, OR STRUCTURE WITHIN THE LIMITS OF THE PROJECT. THIS NOTE APPLIES TO ALL PAGES.
 IF WORK IS TO BE DONE IN A STATE HIGHWAY, A PERMIT MUST BE OBTAINED FROM THE STATE OF CALIFORNIA, DIVISION OF HIGHWAYS, 120 SOUTH BRIDGE STREET, LOS ANGELES, CALIFORNIA.

COUNTY OF LOS ANGELES, CALIFORNIA
 JOHN A. LAMBIE, COUNTY ENGINEER J. D. PARKHURST, CHIEF ENGINEER
 APPROVED BY: Robert Williams APPROVED BY: J. D. Parkhurst
 COUNTY ENGINEER OFFICE ENGINEER

CHECKED BY: Donald W. Welch 9-5-60
 REG. C.E. NO. 101662

4145

J.N. 0250.02



NO CHARGE FOR CONNECTIONS

4146