

B.M. S 1 7725 ELEV. 1366 179  
 ROBN TAG W CB 1 FT N 9CR at NW COR  
 SOLEDAD CN RD and WHITES CN RD 100 FT  
 N and 40 FT W of INT  
 MEWHALL QUAD. 19 58

PRIVATE ENGINEERS NOTICE TO CONTRACTORS  
 The existence and location of any underground utility or structure shown on these plans are obtained by a search of the available records. To the best of our knowledge there are no existing utilities except as shown on this map.  
 The contractor is required to take due precautionary measures to protect the utility lines shown and any other lines not of record or not shown on this drawing.

*E. L. Bolten Jr.*  
 E. L. Bolten Jr. R.C.E. 10633

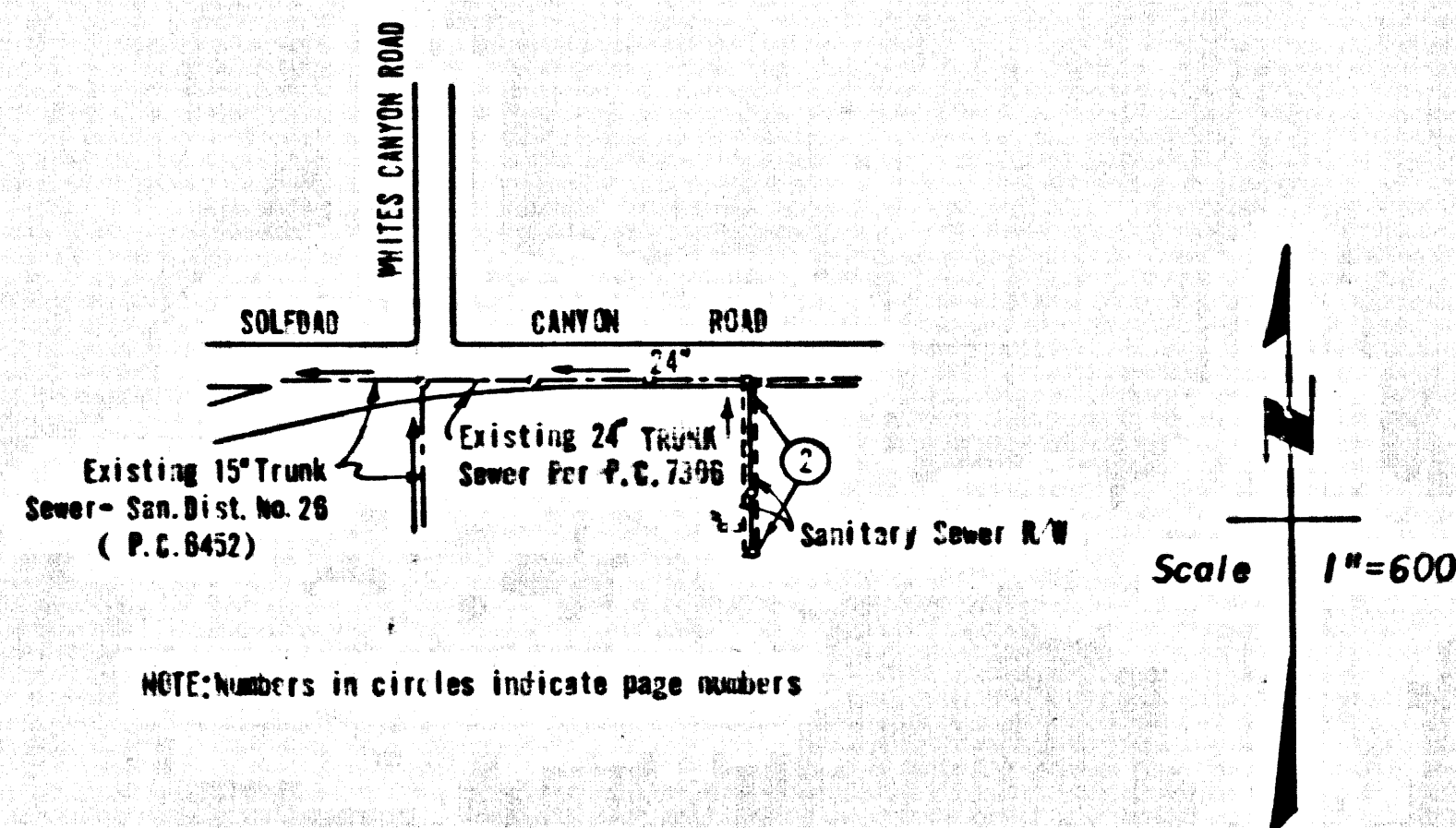
NEWHALL BLDG. DIST. NO. 8.2

- NOTES:
- HOUSE LATERALS TO BE CONSTRUCTED WITH INVERTS AT PROPERTY LINE & FEET BELOW CURB GRADE EXCEPT AS NOTED.
  - PROVIDE STAKES ON THE PROPERTY LINE OR PROPERTY LINES PRODUCED AT RIGHT ANGLES TO THE SEWER LINE AT THE CENTER LINE OF EACH MANHOLE.
  - NO REPRESENTATIVE OF THE COUNTY ENGINEER WILL SURVEY OR LAY OUT ANY PORTION OF THE WORK.
  - THE PRIVATE ENGINEER SHALL FURNISH THE COUNTY ENGINEER WITH GRADE SHEETS AND STATIONING FOR ALL HOUSE LATERALS AND "T" OR "T" BRANCHES AND SHALL PROVIDE STAKES FOR THEM AT THEIR PROPER LOCATIONS WITH STATIONING PLAINLY MARKED. ALL HOUSE LATERALS SHALL BE CONSTRUCTED IN A STRAIGHT ALIGNMENT AT RIGHT ANGLES FROM THE MAIN LINE SEWER EXCEPT AS SHOWN ON THE PLANS. HOUSE LATERALS FROM CHIMNEYS SHALL NOT HAVE AN ANGLE OF LESS THAN 45° WITH THE MAIN LINE SEWER. ANY CHANGE IN ALIGNMENT SHALL BE REQUESTED BY WRITING BY THE PRIVATE ENGINEER.
  - ONE-SHAFTED MANHOLES SHALL BE SPACED THE HOUSE LATERAL DISTANCE AT THE PROPERTY LINE BEYOND THE SIDE-OF-CURB SEPARATION FOR EACH HOUSE LATERAL ON THE GRADE SHEET.
  - NO REVISIONS SHALL BE MADE IN THESE PLANS WITHOUT THE APPROVAL OF THE COUNTY ENGINEER.
  - THE CONTRACTOR SHALL NOTIFY THE CONSTRUCTION DIVISION BY TELEPHONE, MADISON 9-4700, EXT. 8150, AT LEAST TWENTY-FOUR HOURS BEFORE STARTING ANY WORK UNDER THIS CONTRACT.
  - ALL STRUCTURES SHALL BE BRICK MANHOLES PER S-3 OR PRECAST CONCRETE MANHOLES PER S-3 OR S-4, EXCEPT AS NOTED.
  - "T" OR "T" BRANCHES MAY BE USED FOR CONNECTIONS TO MAINLINE SEWERS EXCEPT AS NOTED.
  - MANHOLE TOPS IN IMPROVED RIGHTS OF WAY TO BE LEVEL WITH FINISHED PAVEMENT.
  - USE EXTRA STRENGTH PIPE, ALL PIPE IS STANDARD DEPTH EXCEPT AS NOTED.
  - VERTICAL CLAY PIPE JOINTS SHALL BE TYPE "B", "T", OR "C" PER STANDARD SPECIFICATIONS SECTION 306.2.
  - IF A COVER IS TO BE WITHIN THREE FEET OF THE SEWER, THE SEWER SHALL BE ENCASED, PER S-23, TWO FEET ON EACH SIDE FROM THE POINT OF INTERFERENCE.
  - IF DURING THE COURSE OF CONSTRUCTION IT IS DETERMINED THAT THERE IS LESS THAN FOUR FEET OF COVER OVER THE TOP OF A MAIN LINE OR HOUSE LATERAL V.C.P. SEWER WHICH IS NOT INDICATED ON THE PLANS, THE PIPE SHALL BE ENCASED PER S-23, UNLESS OTHERWISE APPROVED BY THE COUNTY ENGINEER.
  - RESURFACE ALL TRENCHES WITHIN PAVED AREAS TO MEET L.A. COUNTY ROAD DEPT. OR CALIFORNIA STATE HIGHWAY REQUIREMENTS IN ACCORDANCE WITH PERMITS.
  - SEWERS TO BE TESTED FOR LEAKAGE PER SECTION 306.2.3.7 OF THE STANDARD SPECIFICATIONS.
  - REFER TO SECTION 7-16.4.1 OF THE STANDARD SPECIFICATIONS, REGARDING SPOKE DORIES.
  - ALL JOINTS BETWEEN CLAY PIPE AND VERTICAL CLAY PIPE SHALL BE MADE WITH A RUBBER SLEEVE JOINT, TYPE "C" OR "D", WITH BUSHING IF NECESSARY PER STANDARD SPECIFICATIONS, SECTION 306.2.

PROFILE, ALIGNMENT AND GRADE OF  
**SANITARY SEWERS** P.C. 8225  
 PAC 1

CONSTRUCTED IN  
 R/W SOUTH OF SOLEDAD  
 CANYON RD. (NEWBERRY  
 SHOPPING CENTER)  
**PRIVATE CONTRACT NO. 8225**

261-5-165  
 1 SHEETS: 2 PAGES  
 SCALE: VERT. 1"=6'  
 HORIZ. 1"=60'  
 OCTOBER, 1968  
 PREPARED IN THE OFFICES OF  
**ANDEL ENGINEERING COMPANY**  
 By: *E. L. Bolten Jr.*  
 REG. C. E. NO. 10533



INDEX MAP  
 P C 8225

19. SPECIAL BACKFILL IN DEGRADED AREAS:  
 A. BACKFILL TRENCH & REPLACE OTHER BATHS REQUIRED IN AS TO ACHIEVE THE ORIGINAL UNFINISHED GRADES & SLOPES SHOWN ON THE GRADING PLANS APPROVED FOR THIS DEVELOPMENT BY THE DIVISION OF SANITARY ENGINEERING.  
 B. ALL BACKFILL OF EARTH REPLACED SHALL BE COMPACTED TO A MINIMUM OF 90% OF MAXIMUM DENSITY PER ASTM STANDARD METHOD OF TEST "D99-57", AS MODIFIED. ACCEPTABLE COMPLETION OF SUCH COMPACTING SHALL BE SUBMITTED TO THE SANITARY DIVISION.

County Sanitation Districts shall be notified prior to the following so that required inspection can be made (Phone 257-1025 - 444-8888)

Commencement of construction of manholes on District trunk sewer.

Acceptance of the project.

No connections for the disposal of industrial wastes shall be made to sewers shown on these drawings without written permission from the Chief Engineer and General Manager of the County Sanitation Districts.

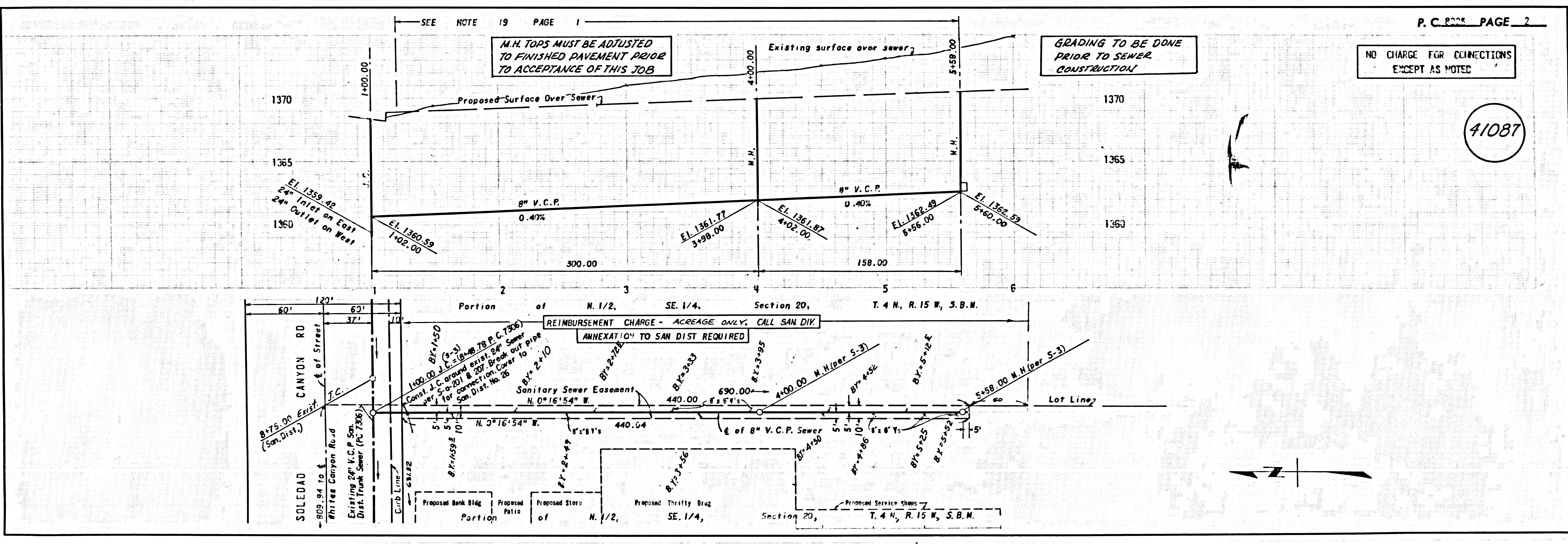
COLLECT CHARGES AS INDICATED

MINIMUM PUBLIC SAFETY REQUIREMENTS	S-1
BRICK MANHOLE	S-3
PRECAST CONCRETE MANHOLE	S-4
MANHOLE FRAME AND COVER	S-5
STANDARD MANHOLE STEP	S-17
READING FOR SEWER PIPE	S-21
GRADING AND ENCASING	S-23
PIPE OR THE SUPPORT	S-26
ALLOWABLE TRENCH WIDTHS	S-28

THE FOLLOWING COUNTY SANITATION DISTRICT STANDARDS APPLY IN THE CONSTRUCTION OF THE S & AT STATION 1+00.00  
 STANDARD MANHOLE (TYPICAL) CHARGE, TYPE "A" S-1-201  
 STANDARD MANHOLE FRAME & COVER S-1-201

NOTE:  
 GRADES TO WHICH THIS IMPROVEMENT IS TO BE CONSTRUCTED ARE SHOWN ON PLANS AND PROFILES. GRADE POINTS FOR TOP OF CURBS, CENTER LINE OF STREETS, OR CENTER LINE OF ALLEYS ARE SHOWN BY CIRCLES ON PROFILES. AT ALL POINTS BETWEEN DESIGNATED POINTS THE GRADE SHALL BE ESTABLISHED SO AS TO CONFORM TO A STRAIGHT LINE DRAWN BETWEEN SAID DESIGNATED POINTS. STATIONING ARE IN FEET ABOVE U.S.C. & G.S. SEA LEVEL DATUM OF 1929.  
 WORK SHALL BE CONSTRUCTED ACCORDING TO THE STANDARD SPECIFICATIONS FOR PUBLIC WORKS CONSTRUCTION AND SPECIAL PROVISIONS FOR THE CONSTRUCTION OF SANITARY SEWERS PART 5, PER S-1, AS APPLICABLE, AND SHALL BE INSPECTED ONLY IN THE PRESENCE OF THE COUNTY ENGINEER.  
 BEFORE WORK CAN BE STARTED, THE CONTRACTOR MUST OBTAIN A PERMIT TO EXCAVATE IN COUNTY STREETS FROM THE L. A. COUNTY ROAD DEPT., DISTRICT OFFICE NO. ... AND PAY A FEE TO THE COUNTY ENGINEER, ROOM 236, COUNTY ENGINEERING BUILDING, 100 WEST SECOND STREET OR ... REGIONAL OFFICE, SUFFICIENT TO COVER THE COST OF CONSTRUCTION INSPECTION AND RECORD PLANS.  
 APPROVAL OF THIS PLAN BY THE COUNTY OF LOS ANGELES DOES NOT CONSTITUTE A REPRESENTATION AS TO THE ACCURACY OF THE LOCATION OR THE EXISTENCE OR NON-EXISTENCE OF ANY UNDERGROUND UTILITY PIPE, OR STRUCTURE WITHIN THE LIMITS OF THIS PROJECT. THIS NOTE APPLIES TO ALL PAGES.  
 IF WORK IS TO BE DONE IN A STATE HIGHWAY, A PERMIT MUST BE OBTAINED FROM THE STATE OF CALIFORNIA, DIVISION OF HIGHWAYS, 120 SOUTH SPRING STREET, LOS ANGELES, CALIFORNIA.  
**COUNTY OF LOS ANGELES, CALIFORNIA**  
 JOHN A. LAMBIE, COUNTY ENGINEER J. D. PARKHURST, CHIEF ENGINEER  
 CO. SAN DIST. NO. 8  
 APPROVED BY *Lucretia Williams* 4/20/69 APPROVED BY *J. D. Parkhurst*  
 REGIONAL ENGINEER STATE OFFICE ENGINEER  
 CHECKED BY *Ralph Scholten* 4/20/69  
 REG. C. E. NO. 13406

J N 079 54



M.H. TOPS MUST BE ADJUSTED TO FINISHED PAVEMENT PRIOR TO ACCEPTANCE OF THIS JOB

GRADING TO BE DONE PRIOR TO SEWER CONSTRUCTION

NO CHARGE FOR CONNECTIONS EXCEPT AS NOTED

41087