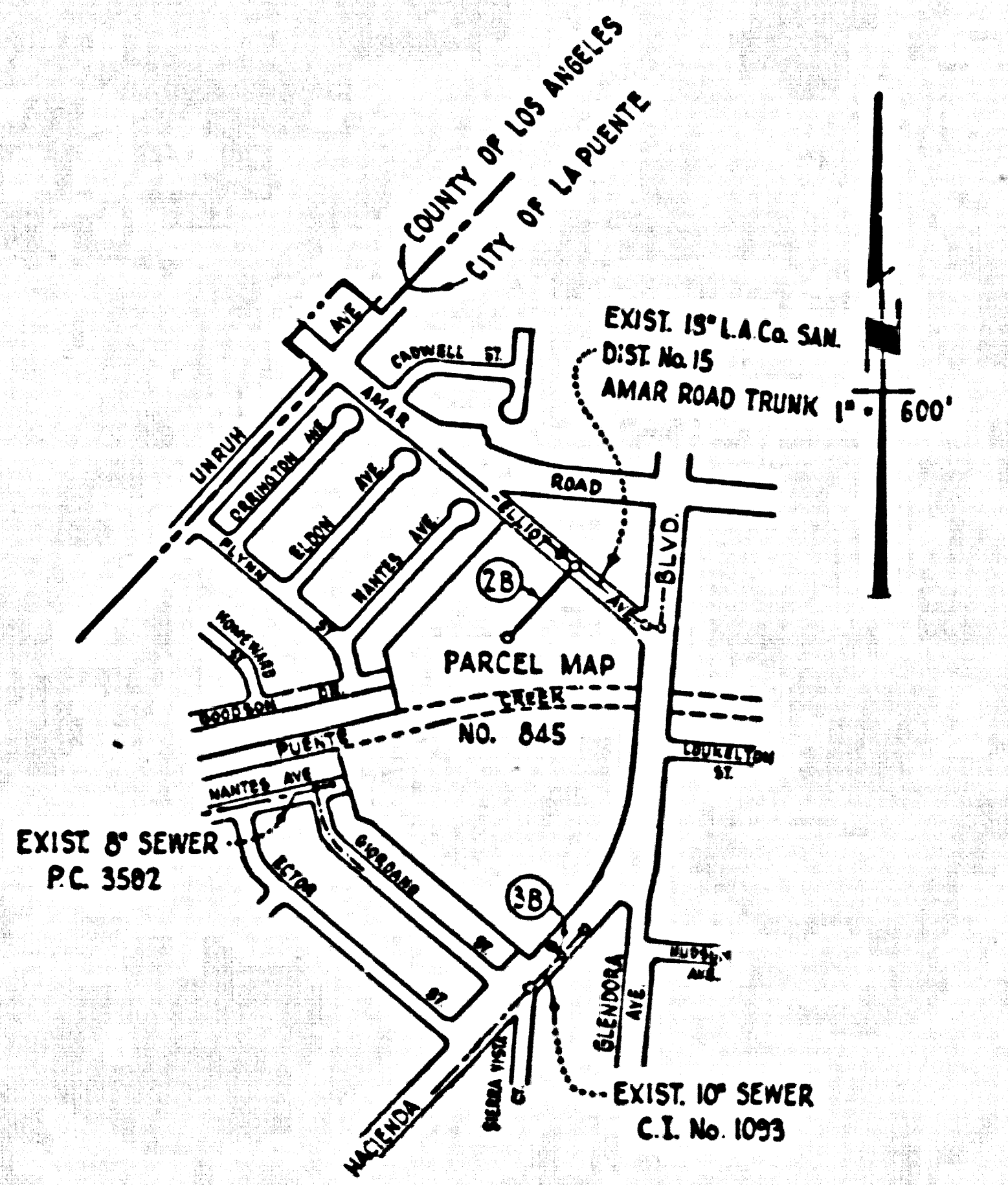


B.M. 86 1107 ELEV. 323.946'
 L & T. in No. Curb
 15' ± W. of B.C.R. at NW corner
 Cadwell St. & Amar Road
 PUENTE QUAD. 19 ES. Adj.



INDEX MAP
 P.C. 8230
 Scale: 1"=600'

County Sanitation Districts shall be notified prior to the following so that required inspection can be made (Phone 857-1028 - 446-6000)
 1. Installation of manholes on District trunk sewer.
 Acceptance of the project.

No connections for the disposal of industrial wastes shall be made to sewers shown on these drawings without written permission from the Chief Engineer and General Manager of the County Sanitation Districts.

COLLECT CHARGES AS INDICATED

LA PUENTE BLDG. DIST. NO. 2.02

- NOTES:
- HOUSE LATERALS TO BE CONSTRUCTED WITH INVERTS AT PROPERTY LINE 6 FEET BELOW CURB GRADE EXCEPT AS NOTED.
 - PROVIDE STAKES ON THE PROPERTY LINE OR PROPERTY LINES PRODUCED AT RIGHT ANGLES TO THE SEWER LINE AT 1'-1" CENTER LINE OF EACH MANHOLE.
 - NO REPRESENTATIVE OF THE CITY ENGINEER WILL SURVEY OR LAY OUT ANY PORTION OF THE WORK.
 - THE PRIVATE ENGINEER SHALL FURNISH THE CITY ENGINEER WITH GRADE SHEETS AND STATIONING FOR ALL HOUSE LATERALS AND "T" OR "T" BRANCHES AND SHALL PROVIDE STAKES FOR THEM AT THEIR PROPER LOCATIONS WITH STATIONING PLAINLY MARKED. ALL HOUSE LATERALS SHALL BE CONSTRUCTED IN A STRAIGHT ALIGNMENT AT RIGHT ANGLES FROM THE MAIN LINE SEWER EXCEPT AS SHOWN ON THE PLANS. HOUSE LATERALS FROM CHIMNEYS SHALL NOT HAVE AN ANGLE OF LESS THAN 45° WITH THE MAIN LINE SEWER. ANY CHANGE IN ALIGNMENT SHALL BE REQUESTED BY WRITING BY THE PRIVATE ENGINEER.
 - THE PRIVATE ENGINEER SHALL FURNISH THE HOUSE LATERAL DEPTH AT THE PROPERTY LINE BELOW THE TOP OF CURB ELEVATION FOR EACH HOUSE LATERAL ON THE GRADE SHEET.
 - NO REVISIONS SHALL BE MADE IN THESE PLANS WITHOUT THE APPROVAL OF THE CITY ENGINEER.
 - THE CONTRACTOR SHALL NOTIFY THE CONSTRUCTION DIVISION BY TELEPHONE, BARRISON 9-870, EXT. 8158, AT LEAST TWENTY-FOUR HOURS BEFORE STARTING ANY WORK UNDER THIS CONTRACT.
 - ALL STRUCTURES SHALL BE EITHER SPICED MANHOLES PER 5-3 OR PRECAST CONCRETE MANHOLES PER 5-3 OR 5-4, EXCEPT AS NOTED.
 - "T" OR "T" BRANCHES MAY BE USED FOR CONNECTIONS TO MAINLINE SEWERS EXCEPT AS NOTED.
 - MANHOLE TOPS IN IMPROVED RIGHTS OF WAY TO BE LEVEL WITH FINISHED GRADE.
 - USE EXTRA STRENGTH PIPE. ALL PIPE IS STANDARD DEPTH EXCEPT AS NOTED.
 - VITRIFIED CLAY PIPE JOINTS SHALL BE TYPE "B", "T", OR "S" PER STANDARD SPECIFICATIONS SECTION 306.3.
 - IF A POWER POLE IS WITHIN THREE FEET OF THE SEWER, THE SEWER SHALL BE ENCASED, PER 5-23, TWO FEET ON EACH SIDE FROM THE POINT OF INTERFERENCE.
 - IF DURING THE COURSE OF CONSTRUCTION IT IS DETERMINED THAT THERE IS LESS THAN FOUR FEET OF COVER OVER THE TOP OF A MAIN LINE OR HOUSE LATERAL V.C.P. SEWER WHICH IS NOT INDICATED ON THE PLANS, THE PIPE SHALL BE ENCASED PER 5-23, UNLESS OTHERWISE APPROVED BY THE CITY ENGINEER.
 - RESURFACE ALL TRENCHES WITHIN PAVED AREAS TO MEET L.A. COUNTY ROAD DEPT. OR CALIFORNIA STATE HIGHWAY REQUIREMENTS IN ACCORDANCE WITH PERMITS.
 - SEWERS TO BE TESTED FOR LEAKAGE PER SECTION 306.3.2.7 OF THE STANDARD SPECIFICATIONS.
 - REFER TO SECTION 7-16.1.1 OF THE STANDARD SPECIFICATIONS, REGARDING SAFETY ORDERS.
 - ALL JOINTS BETWEEN CLAY PIPE AND VITRIFIED CLAY PIPE SHALL BE MADE WITH A RUBBER SLEEVE JOINT, TYPE "C" OR "D", FIFTH EDITION IF NECESSARY PER STANDARD SPECIFICATIONS, SECTION 306.3.

THE FOLLOWING LATEST REVISED STANDARD PLANS ON FILE IN THE OFFICE OF THE COUNTY ENGINEER SHALL APPLY IN THE CONSTRUCTION OF THIS PROJECT.

GROUND	5-3
MINIMUM PUBLIC SAFETY REQUIREMENTS	5-3
SPICED MANHOLE	5-3
NON-SPICED PRECAST CONCRETE MANHOLE	5-3
SPICED PRECAST CONCRETE MANHOLE	5-4
MANHOLE FRAMES AND COVERS	5-18
STANDARD MANHOLE STEP	5-17
WARNING FOR SEWER PIPE	5-20
ENCASING AND ENCASEMENT	5-23
PIPE OR THE SUPPORT	5-23
ALLOWABLE TRENCH WIDTHS	5-23

1. FROM THE DEPARTMENT OF THE INCLUDING SEWER CONSTRUCTION PERMIT BY THE COUNTY ENGINEER THE CONTRACTOR SHALL OBTAIN A PERMIT TO EXCAVATE FROM THE STATE OF CALIFORNIA, DIVISION OF INDUSTRIAL SAFETY.

PROFILE, ALIGNMENT AND GRADE OF
 SANITARY SEWERS P.C. 8230
 CONSTRUCTED IN PAGE 1

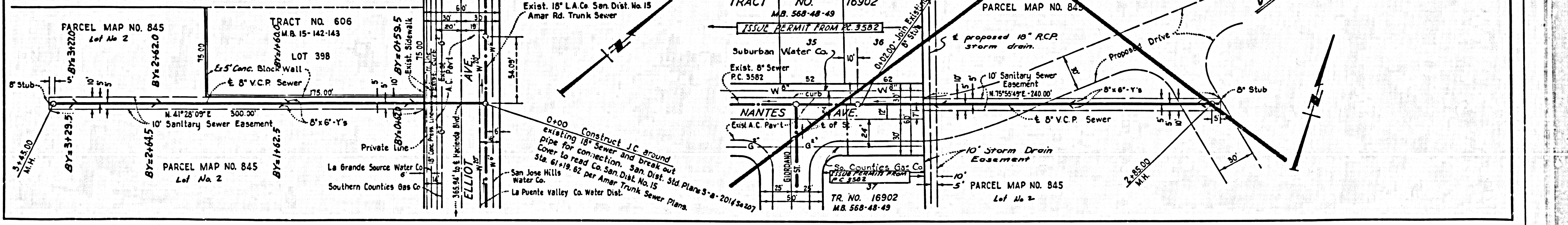
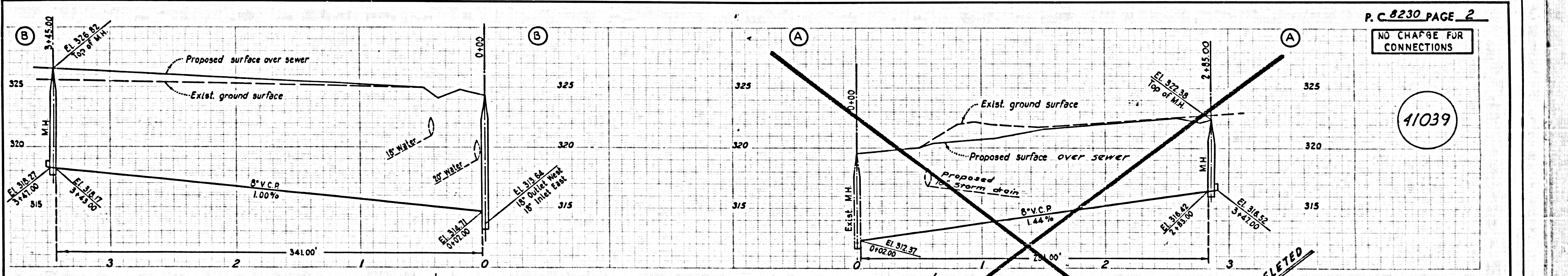
PARCEL MAP NO. 845

PRIVATE CONTRACT NO. 8230

W.S. 38
 2 SHEETS; 3 PAGES
 SCALE: VERT. 1"=4'
 HORIZ. 1"=40'
 DECEMBER, 1968
 PREPARED IN THE OFFICES OF
 KRELLE & LEWIS, INC.
 5817 TEMPLE CITY BLVD., TEMPLE CITY, CALIF.
 By: *[Signature]*
 REG. C. E. NO. 13132

NOTE:
 GRADES TO WHICH THE IMPROVEMENT IS TO BE CONSTRUCTED ARE SHOWN ON PLANS AND PROFILES. GRADE POINTS FOR TOP OF CURBS, CENTER LINE OF STREETS, OR CENTER LINE OF ALLEYS ARE SHOWN BY CIRCLES ON PROFILES. AT ALL POINTS BETWEEN DESIGNATED POINTS THE GRADE SHALL BE ESTABLISHED SO AS TO CONFORM TO A STRAIGHT LINE DRAWN BETWEEN SAID DESIGNATED POINTS. ELEVATIONS ARE IN FEET ABOVE U.S.C. & G.S. SEA LEVEL DATUM OF 1929.
 WORK SHALL BE CONSTRUCTED ACCORDING TO THE STANDARD SPECIFICATIONS FOR PUBLIC WORKS CONSTRUCTION & CITY ENGINEER'S SPECIFICATIONS FOR THE CONSTRUCTION OF SANITARY SEWERS DATED FEB. 12, 1968, AS REVISED, AND SHALL BE PROSECUTED ONLY IN THE PRESENCE OF THE CITY ENGINEER.
 BEFORE WORK CAN BE STARTED, THE CONTRACTOR MUST OBTAIN A PERMIT TO EXCAVATE IN CITY STREETS FROM THE L. A. COUNTY ROAD DEPT., DISTRICT OFFICE NO. 1, AND PAY A FEE TO THE CITY OF LA PUENTE, DISTRICT MANAGER OF LA PUENTE, CALIFORNIA.
 APPROVED TO COVER THE COST OF CONSTRUCTION INSPECTION AND RECORD PLANS.
 APPROVAL OF THIS PLAN BY THE CITY OF LA PUENTE DOES NOT CONSTITUTE A REPRESENTATION AS TO THE ACCURACY OF THE LOCATION OF OR THE EXISTENCE OR NON-EXISTENCE OF ANY UNDERGROUND UTILITY PIPE, OR STRUCTURE WITHIN THE LIMITS OF THE PROJECT. THIS NOTE APPLIES TO ALL PAGES.
 IF WORK IS TO BE DONE IN A PATH HIGHWAY, A PERMIT MUST BE OBTAINED FROM THE STATE OF CALIFORNIA, DIVISION OF HIGHWAY, 128 SOUTH BRIDGE STREET, LOS ANGELES, CALIFORNIA.

CITY OF LA PUENTE, CALIFORNIA
 JOHN A. LAMBIE, CITY ENGINEER J. D. PARKHURST, CHIEF ENGINEER
 CO. SAN DIST. 150
 APPROVED BY: *[Signature]* APPROVED BY: *[Signature]*
 SPECIAL ENGINEER DATE: 12-17-68 OFFICE ENGINEER
 CHECKED BY: *[Signature]* DATE: 12-17-68
 REG. C.E. NO. 12883
 APPROVED BY: *[Signature]* DATE: 12-26-68
 CITY MANAGER
 CITY OF LA PUENTE, CALIF.



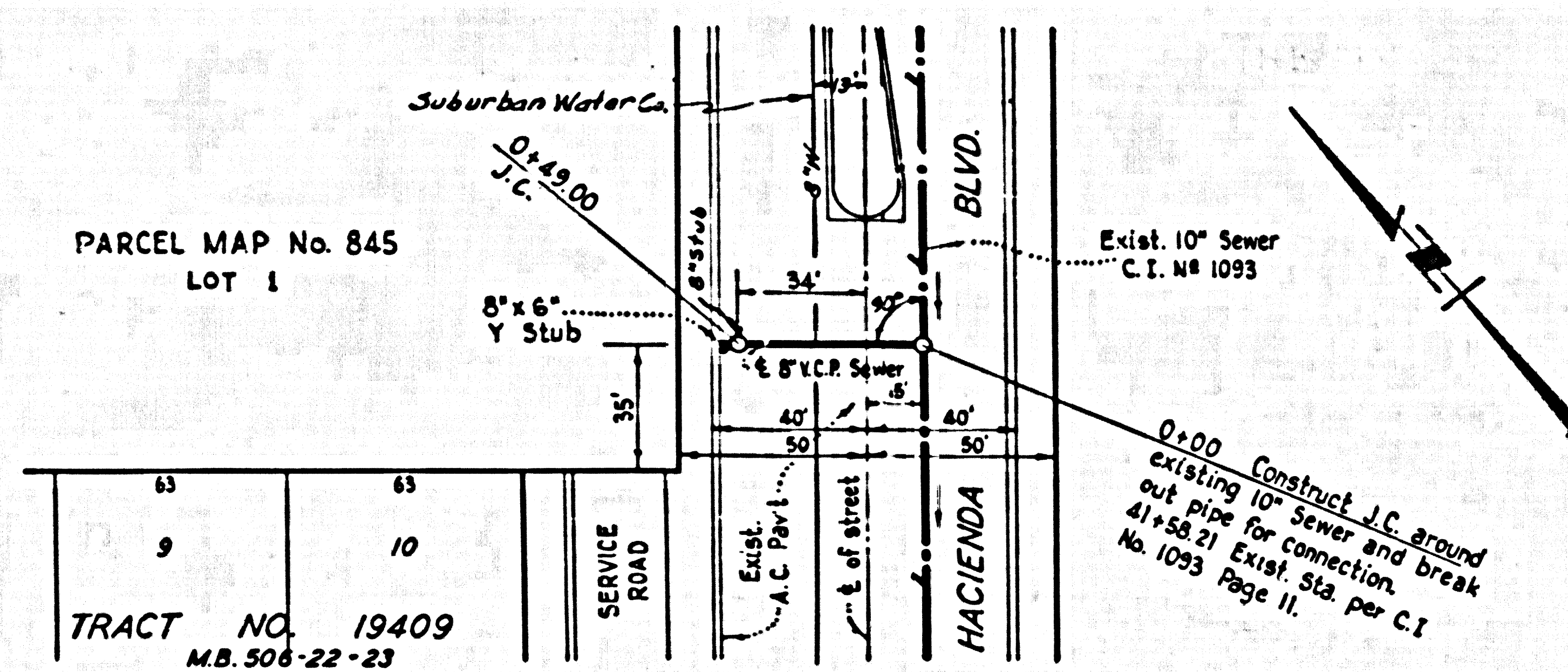
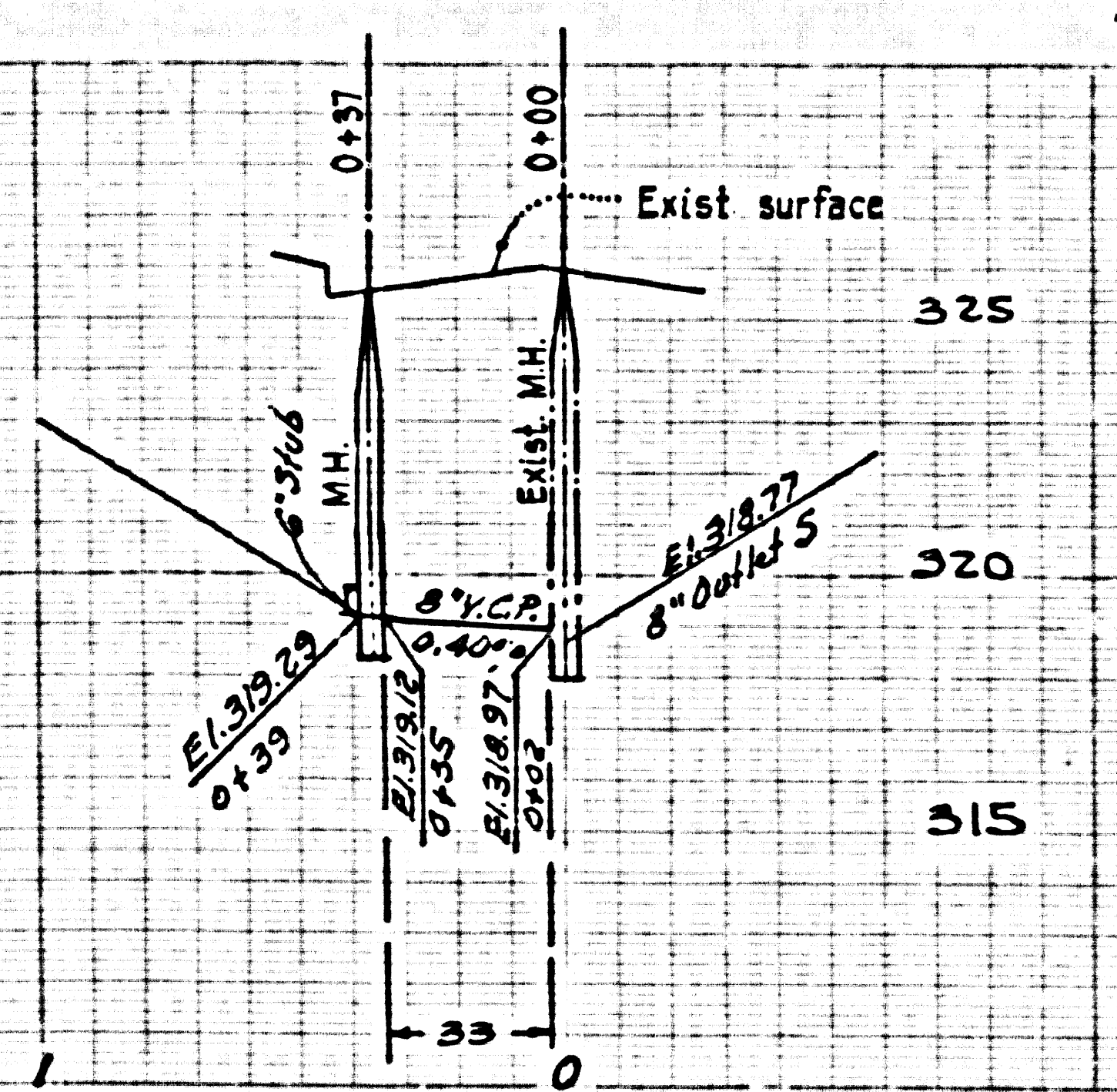
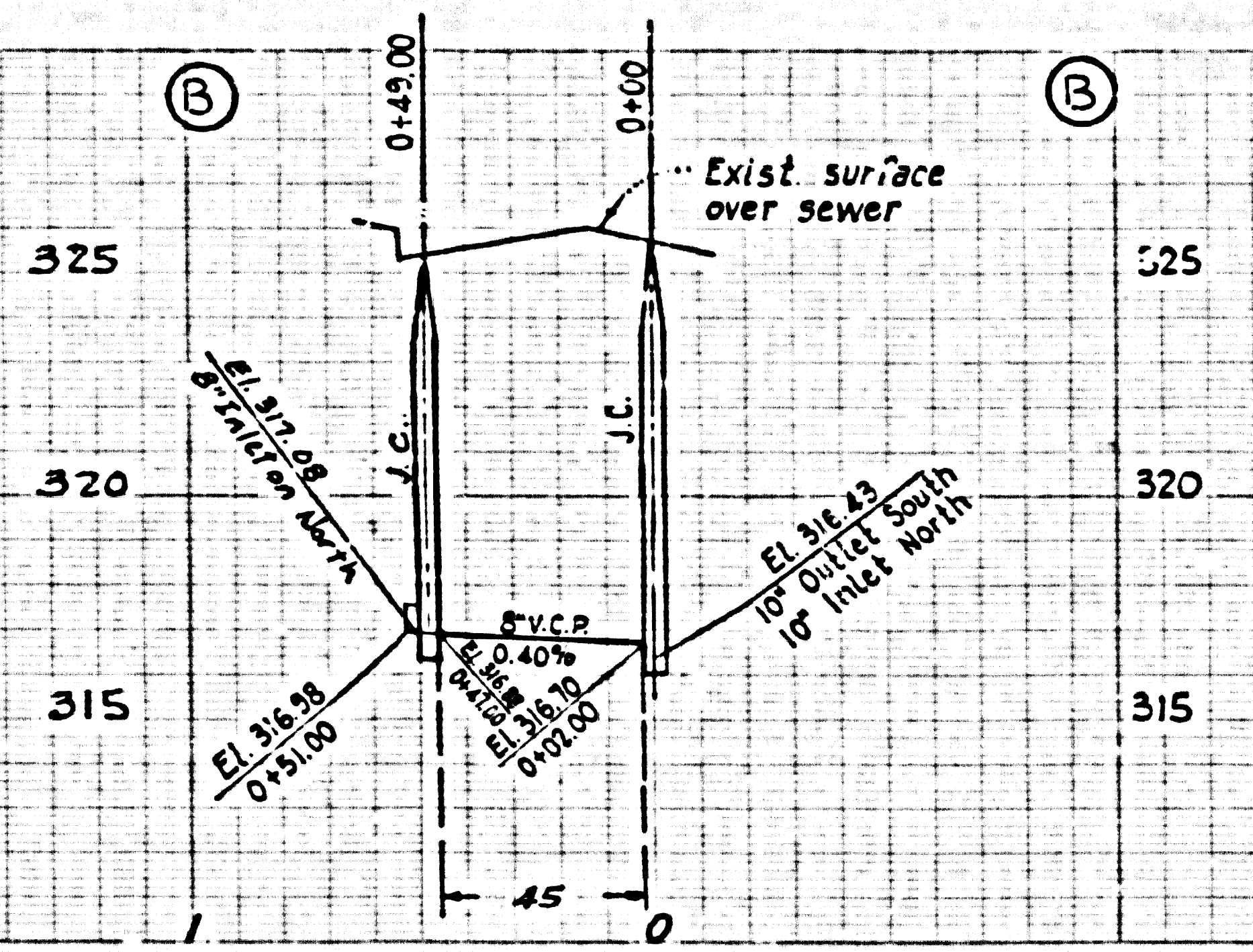
P. C. 8230 PAGE 2

NO CHARGE FOR CONNECTIONS

41039

NO CHARGE FOR CONNECTIONS

41040



TRACT NO. 606
M.B. 15-142-143

398

~~DELETED~~

