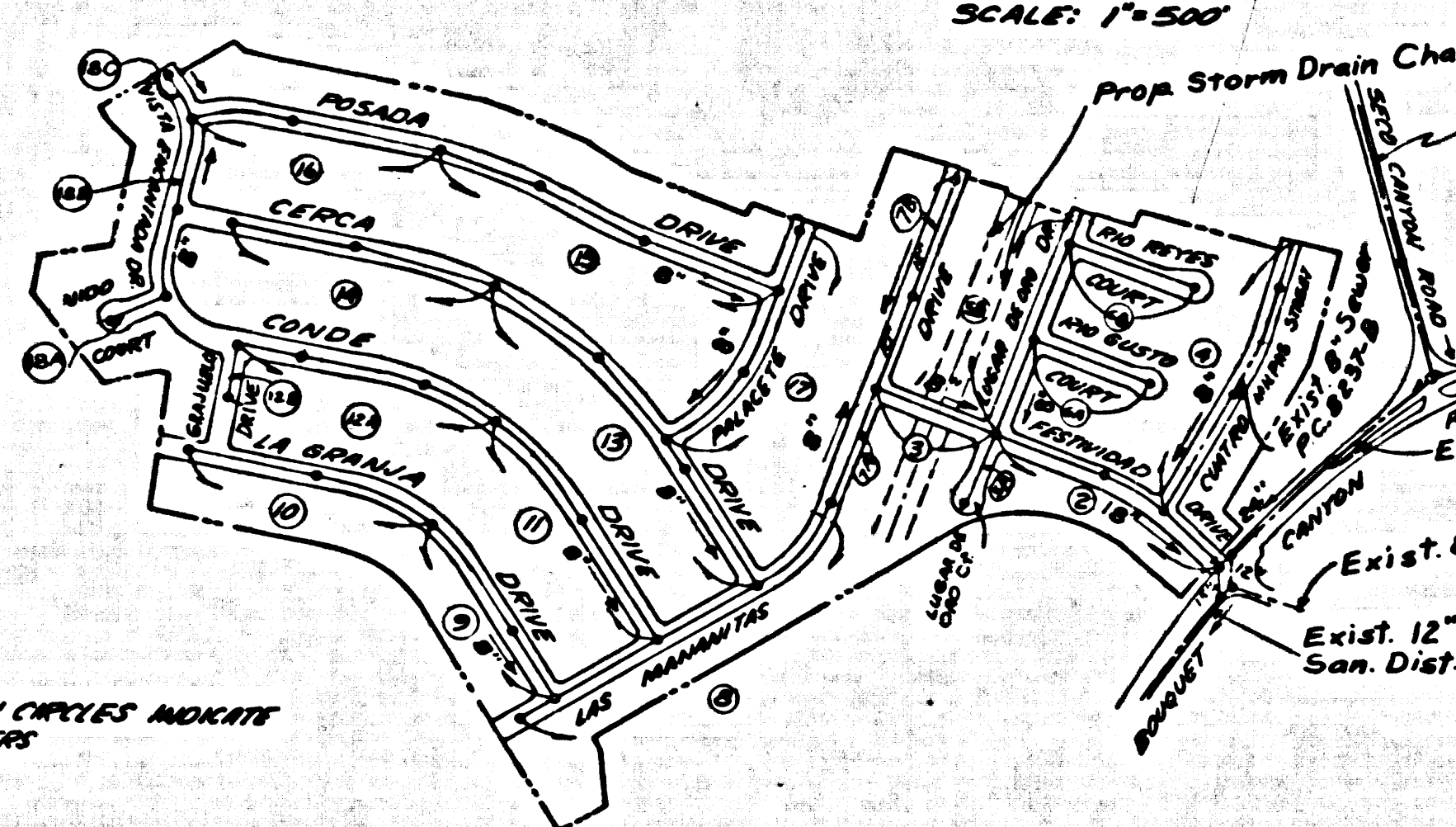


B.M. BL G22 ELEV. 12371.57  
 L+SPIKE E. CB 6 FT. S. BCR @ S.E.  
 COR. SAN FRANCISQUITO CYN RD  
 + CHAPARRO DR. GO FT. S. + 30 FT. E.  
 + INT. MKD. (EV. 4)  
 NEWHALL QUAD. 19.65



**INDEX MAP**  
 TRACT No. 29999  
 P.C. 8237 R

**REVISION:**  
 PAGE 1B - ADD M.H. AT STA. 9+50.00  
 MOVE M.H. AT STA. 10+75.00 TO 10+75.00  
 REV. GRADES - 9+50.00 TO 10+75.00  
 MAKE H.L. TO LOT 62

APPROVED: *[Signature]* 5-31-70  
 REG. C.E. NO. 14390 (DATE)  
 OFFICE OF COUNTY ENGINEER

**REVISION:**  
 PAGE 1B - REVISE SEWER GRADES  
 BETWEEN STA. 7+5000 & 12+75.00

APPROVED: *[Signature]* 5-20-70  
 REG. C.E. NO. 14390 DATE  
 OFFICE OF COUNTY ENGINEER

**REVISION:**  
 PAGES 2 & 3 - REVISE SEWER ALIGNMENT  
 BETWEEN STA. 5+75.00 & 11+75.00  
 PAGES 5 & 6 - ADJUST STATIONING  
 AND GRADES ON HOUSE LATERAL  
 LINES TO CONFORM TO CHANGES  
 ON PAGES 2 & 3

APPROVED: *[Signature]* 6/12/69  
 REG. C.E. NO. 14390 (DATE)  
 OFFICE OF COUNTY ENGINEER

**REVISION:**  
 PAGES 12, 13, 14, 15 - STORM DRAIN  
 CHANGES NOT AFFECTING MAIN LINE  
 OR H.L.'S

PAGE 16 - REVISE STORM DRAIN AND  
 2" ENCLOSURE ON MAIN LINE  
 PAGE 17 - REVISE AND EXTEND STORM  
 DRAIN IN VISTA ENCANTADA, REVISE  
 MAIN LINE & H.L. DEPTHS AND ADD  
 ENCLOSURE

APPROVED: *[Signature]* 5/15/70  
 REG. C.E. NO. 14390 DATE  
 OFFICE OF COUNTY ENGINEER

**REVISION:** PAGE 1 - ADD NOTE 19  
 PAGES 2 & 10 - RAISE SEWER GRADES  
 BETWEEN STA. 5+00 AND 10+00 TO  
 AGEE - H.L.'S TO BE 3" BELOW QUANTO  
 STREET

APPROVED: *[Signature]* 5/12/70  
 REG. C.E. NO. 14390 DATE  
 OFFICE OF COUNTY ENGINEER

County Sanitation Districts shall be notified prior to the following so that required inspection can be made (Phone 267-1025 - 4-000-0000)

Commencement of construction of main line on District tract sewer.

Acceptance of the project.

No connections for the disposal of industrial wastes shall be made on sewers shown on these drawings without written permission from the Chief Engineer and General Manager of the County Sanitation Districts.

**ALL GRADING MUST BE DONE PRIOR TO SEWER CONSTRUCTION**

**COLLECT CHARGES AS INDICATED**

**DOUBLE SCALE**  
**NEWHALL BLDG. DIST. NO. 82**

- NOTE:
- HOUSE LATERALS TO BE CONSTRUCTED WITH INVERTS AT PROPERTY LINE A FEET BELOW CURB GRADE EXCEPT AS NOTED.
  - PROVIDE STAKES ON THE PROPERTY LINE OR PROPERT LINE PRODUCED AT RIGHT ANGLES TO THE SEWER LINE AT THE CENTER LINE OF EACH MANHOLE.
  - NO REPRESENTATIVE OF THE COUNTY ENGINEER WILL SURVEY OR LAY OUT ANY PORTION OF THE WORK.
  - THE PRIVATE ENGINEER SHALL FURNISH THE COUNTY ENGINEER WITH GRADE SHEETS AND STATIONING FOR ALL HOUSE LATERALS AND "T" OR "T" BRANCHES AND SHALL PROVIDE STAKES FOR THEM AT THEIR PROPER LOCATIONS WITH STATIONING PLAINLY MARKED. ALL HOUSE LATERALS SHALL BE CONSTRUCTED IN A STRAIGHT ALIGNMENT AT RIGHT ANGLES FROM THE MAIN LINE SEWER EXCEPT AS SHOWN ON THE PLANS. HOUSE LATERALS FROM CHIMNEYS SHALL NOT HAVE AN ANGLE OF LESS THAN 45° WITH THE MAIN LINE SEWER. ANY CHANGE IN ALIGNMENT SHALL BE REQUESTED BY WRITING BY THE PRIVATE ENGINEER.
  - THE PRIVATE ENGINEER SHALL FURNISH THE HOUSE LATERAL DEPTH AT THE PROPERTY LINE BELOW THE TOP OF CURB REVISION FOR EACH HOUSE LATERAL ON THE GRADE SHEET.
  - NO REVISIONS SHALL BE MADE IN THESE PLANS WITHOUT THE APPROVAL OF THE COUNTY ENGINEER.
  - THE CONTRACTOR SHALL NOTIFY THE CONSTRUCTION DIVISION BY TELEPHONE, RADISON 9-4747, EXT. 8159, AT LEAST TWENTY-FOUR HOURS BEFORE STARTING ANY WORK UNDER THIS CONTRACT.
  - ALL STRUCTURES SHALL BE EITHER BRICK MANHOLES PER 5-2 OR PRECAST CONCRETE MANHOLES PER 5-2 OR 5-4, EXCEPT AS NOTED.
  - "T" OR "T" BRANCHES MAY BE USED FOR CONNECTIONS TO MAINLINE SEWERS EXCEPT AS NOTED.
  - MANHOLE TOPS IN UNIMPROVED RIGHTS OF WAY TO BE SIX INCHES ABOVE FINISHED GRADE.
  - USE STEEL STRENGTH PIPE. ALL PIPE IS STANDARD DEPTH EXCEPT AS NOTED.
  - INVERTED CLAY PIPE JOINTS SHALL BE TYPE "T", "F", OR "G" PER STANDARD SPECIFICATIONS SECTION 308-2.
  - IF A POWER POLE IS WITHIN THREE FEET OF THE SEWER, THE SEWER SHALL BE ENCASED, PER 5-26, TWO FEET ON EACH SIDE FROM THE POINT OF INTERFERENCE.
  - IN MAKING THE COURSE OF CONSTRUCTION IF IT IS DETERMINED THAT THERE IS LESS THAN FOUR FEET OF COVER OVER THE TOP OF A MAIN LINE OR HOUSE LATERAL V.C.P. SEWER WHICH IS NOT INDICATED ON THE PLANS, THE PIPE SHALL BE ENCASED PER 5-26 UNLESS OTHERWISE APPROVED BY THE COUNTY ENGINEER.
  - RESURFACE ALL TRENCHES WITHIN PAVED AREAS TO MEET L.A. COUNTY ROAD DEPT. OR CALIFORNIA STATE HIGHWAY REQUIREMENTS IN ACCORDANCE WITH PERMITS.
  - SEWERS TO BE TESTED FOR LEAKAGE PER SECTION 308-2.3.7 OF THE STANDARD SPECIFICATIONS.
  - REFER TO SECTION 3-18.1.1 OF THE STANDARD SPECIFICATIONS REGARDING SANITARY CHARGES.
  - ALL JOINTS BETWEEN CAST IRON PIPE AND WITNEYS CLAY PIPE SHALL BE MADE WITH A RUBBER SLEEVE JOINT, TYPE "C" OR "D", WITH WITHIN IF NECESSARY PER STANDARD SPECIFICATION, SECTION 308-2.
  - IN CASE OF GRADES INDICATED HOUSE LATERAL INVERT DEPTHS AT PROPERTY LINE BELOW CURB GRADE, THE FOLLOWING LATER INVERTS STANDARD PLANS ON FILE IN THE OFFICE OF THE COUNTY ENGINEER SHALL APPLY IN THE CONSTRUCTION OF THE PROJECT.

LEGEND	STANDARD SPECIFICATION
MINIMUM PUBLIC SANITARY REQUIREMENTS	5-2
BRICK MANHOLE	5-2
NON-REINFORCED PRECAST CONCRETE MANHOLE	5-4
REINFORCED PRECAST CONCRETE MANHOLE	5-4
BRICKMANHOLE PLUM AND COVER	5-11
STANDARD MANHOLE STOP	5-17
WORKING FOR SEWER LINE	5-20
ENCASING AND ENCASING PIPE	5-23
WYE OR THE SUPPORT	5-26
ALLOWABLE TRENCH WIDTHS	5-27
SPECIAL HOUSE LATERALS	5-28
CHIMNEY PIPE AND BASE	5-27

The following County Sanitation District No. 26 Standards will apply to the Junction Chamber at STA. 1+36.68, Page 2:

3rd M.H. Junction Chamber Type "A"	S-e-201
"	Type "D" S-e-204 A
"	Type "D" S-e-204 B
3rd M.H. Frame & Cover	S-e-207

PROFILE, ALIGNMENT AND GRADE OF  
**SANITARY SEWERS** P.C. 8237 R  
 TO BE CONSTRUCTED IN PAGE 1

TRACT NO. 29999

**PRIVATE CONTRACT NO. 8237 R**

INDEX 267 S 123  
 270 S 123

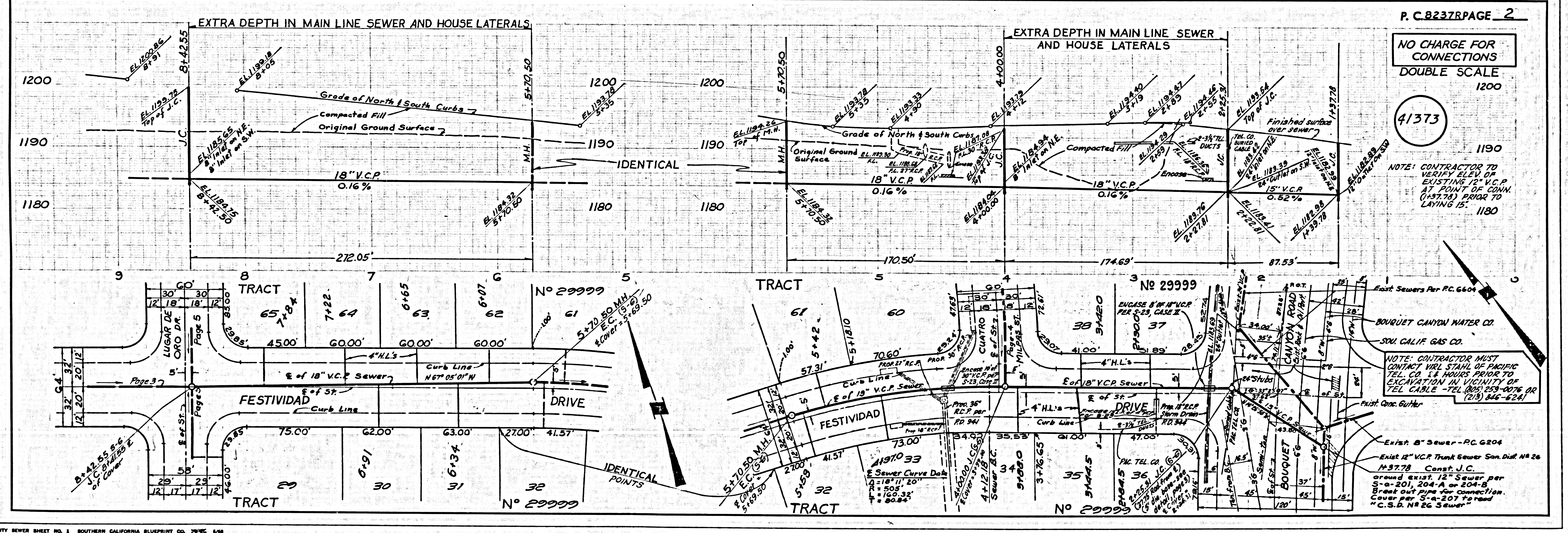
9 SHEETS, 18 PAGES

**41372**

SCALE: VERT. 1" = 6'  
 HORIZ. 1" = 40'  
 FEBRUARY, 1969  
 PREPARED IN THE OFFICES OF  
**McINTIRE & QUIROS INC.**  
 670 MONTEREY PASS ROAD, MONTEREY PARK, CALIF.  
 BY: *[Signature]* REG. C. E. NO. 17985

NOTE:  
 GRADES TO WHICH THIS IMPROVEMENT IS TO BE CONSTRUCTED ARE SHOWN ON PLANS AND PROFILES. GRADE POINTS FOR TOP OF CURBS, CENTER LINE OF STREETS, OR CENTER LINE OF ALLEYS ARE SHOWN BY CIRCLES ON PROFILES. ALL POINTS BETWEEN DESIGNATED POINTS THE GRADE SHALL BE ESTABLISHED SO AS TO CONFORM TO A STRAIGHT LINE DRAWN BETWEEN SAID DESIGNATED POINTS. REVISIONS ARE IN RED ABOVE E.A.C. & G.E. SEA LEVEL DATUM OF 1929.  
 WORK SHALL BE CONSTRUCTED ACCORDING TO THE STANDARD SPECIFICATIONS FOR PUBLIC WORKS CONSTRUCTION AND SPECIAL PROVISIONS FOR THE CONSTRUCTION OF SANITARY SEWERS DRAIN 8, 12, 15, 18, 24, & 30 INCHES, AND SHALL BE PROCEEDED ONLY IN THE PRESENCE OF THE COUNTY ENGINEER.  
 BEFORE WORK CAN BE STARTED, THE CONTRACTOR MUST OBTAIN A PERMIT TO EXCAVATE IN COUNTY STREETS FROM THE L.A. COUNTY ROAD DEPT., DISTRICT OFFICE NO. ... AND PAY A FEE TO THE COUNTY ENGINEER, ROOM 209, COUNTY ENGINEERING BUILDING, 108 WEST SECOND STREET OR ... REGIONAL OFFICE, HARBORPORT TO COVER THE COST OF CONSTRUCTION INSPECTION AND RECORD PLANS.  
 APPROVAL OF THIS PLAN BY THE COUNTY OF LOS ANGELES DOES NOT CONSTITUTE A REPRESENTATION AS TO THE ACCURACY OF THE LOCATION OF OR THE EXISTENCE OR NON-EXISTENCE OF ANY UNDERGROUND UTILITY PIPE, OR STRUCTURE WITHIN THE LIMITS OF THIS PROJECT. THE WORK APPLIES TO ALL PAGES.  
 IF WORK IS TO BE DONE IN A STATE HIGHWAY, A PERMIT MUST BE OBTAINED FROM THE STATE OF CALIFORNIA, DIVISION OF HIGHWAYS, 130 SOUTH SPRING STREET, LOS ANGELES, CALIFORNIA.

**COUNTY OF LOS ANGELES, CALIFORNIA**  
**JOHN A. LAMBE, COUNTY ENGINEER** J. D. PARKHURST, CHIEF ENGINEER  
 CO. J.A. 1002-29  
 APPROVED BY: *[Signature]* DATE 5/20/69 OFFICE ENGINEER  
 APPROVED BY: *[Signature]* DATE 5/20/69  
 CHECKED BY: *[Signature]* DATE 5/20/69  
 REG. C. E. NO. 13406

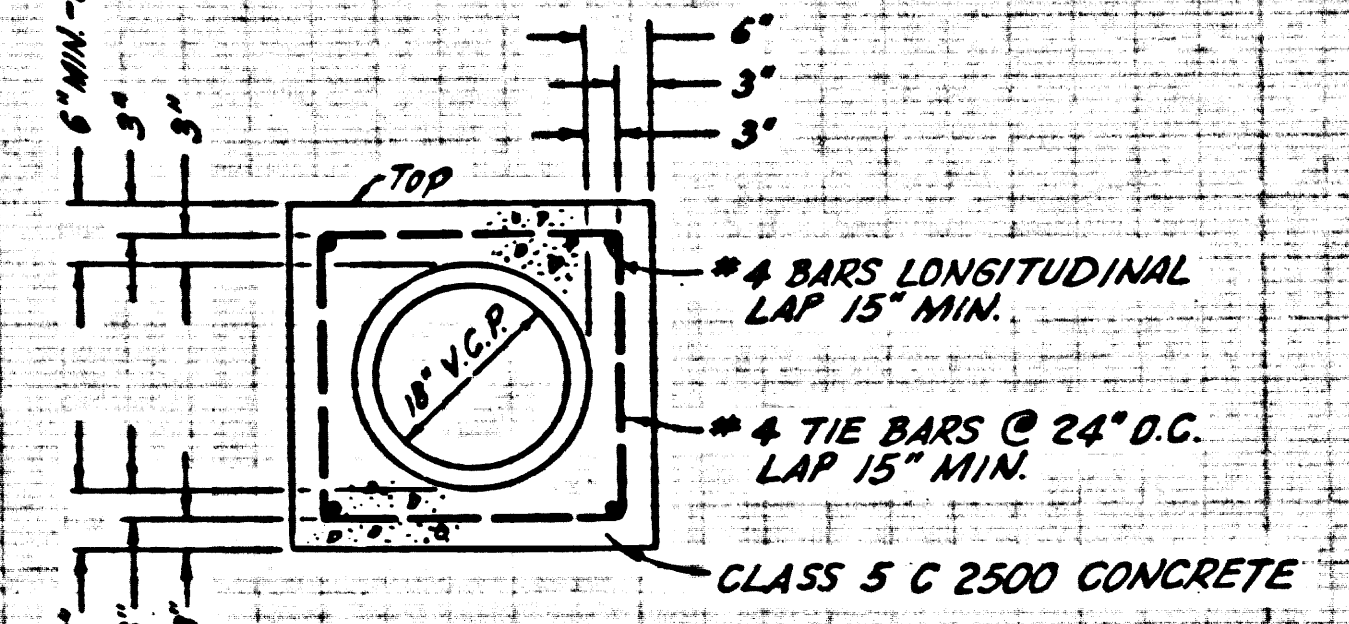
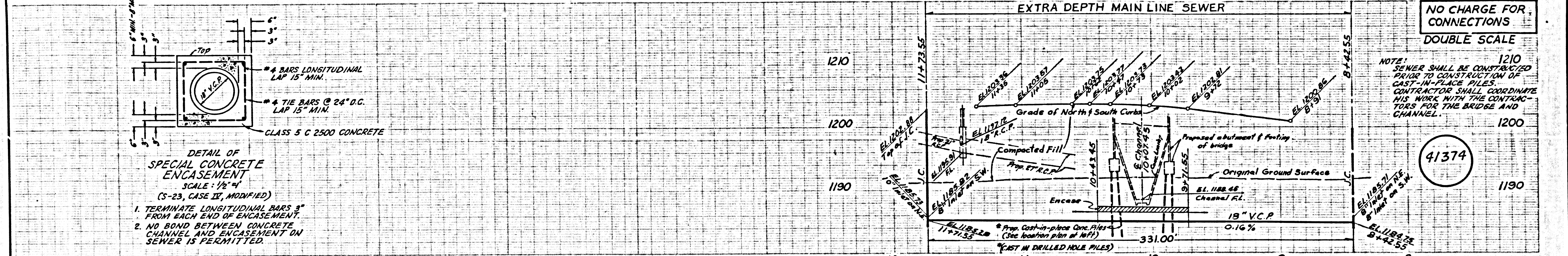


**NO CHARGE FOR CONNECTIONS**  
**DOUBLE SCALE**  
 1200

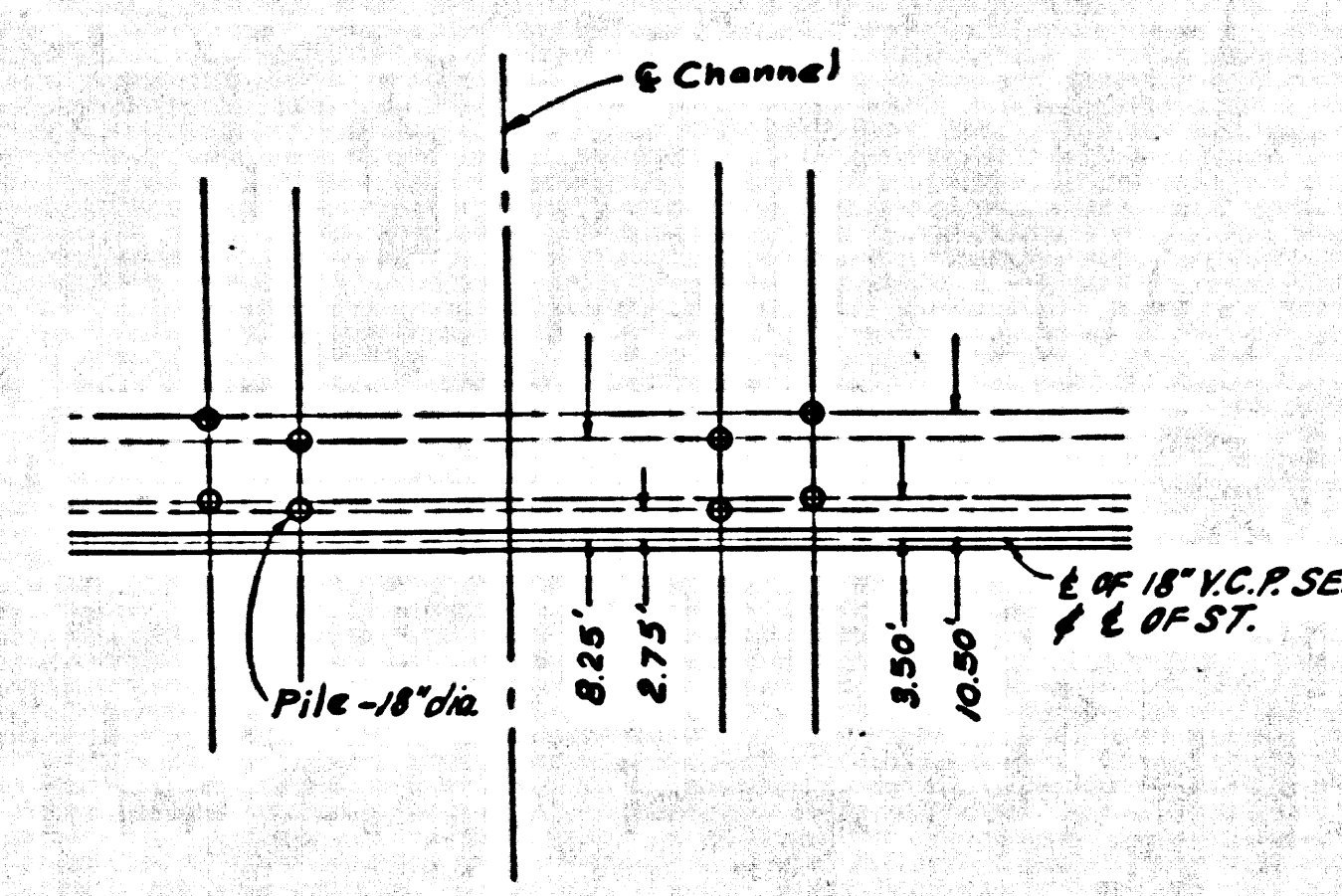
**41373**

NOTE: CONTRACTOR TO VERIFY ELEV. OF EXISTING V.C.P. AT POINT OF CONNECTION PRIOR TO LAYING IS: 1180

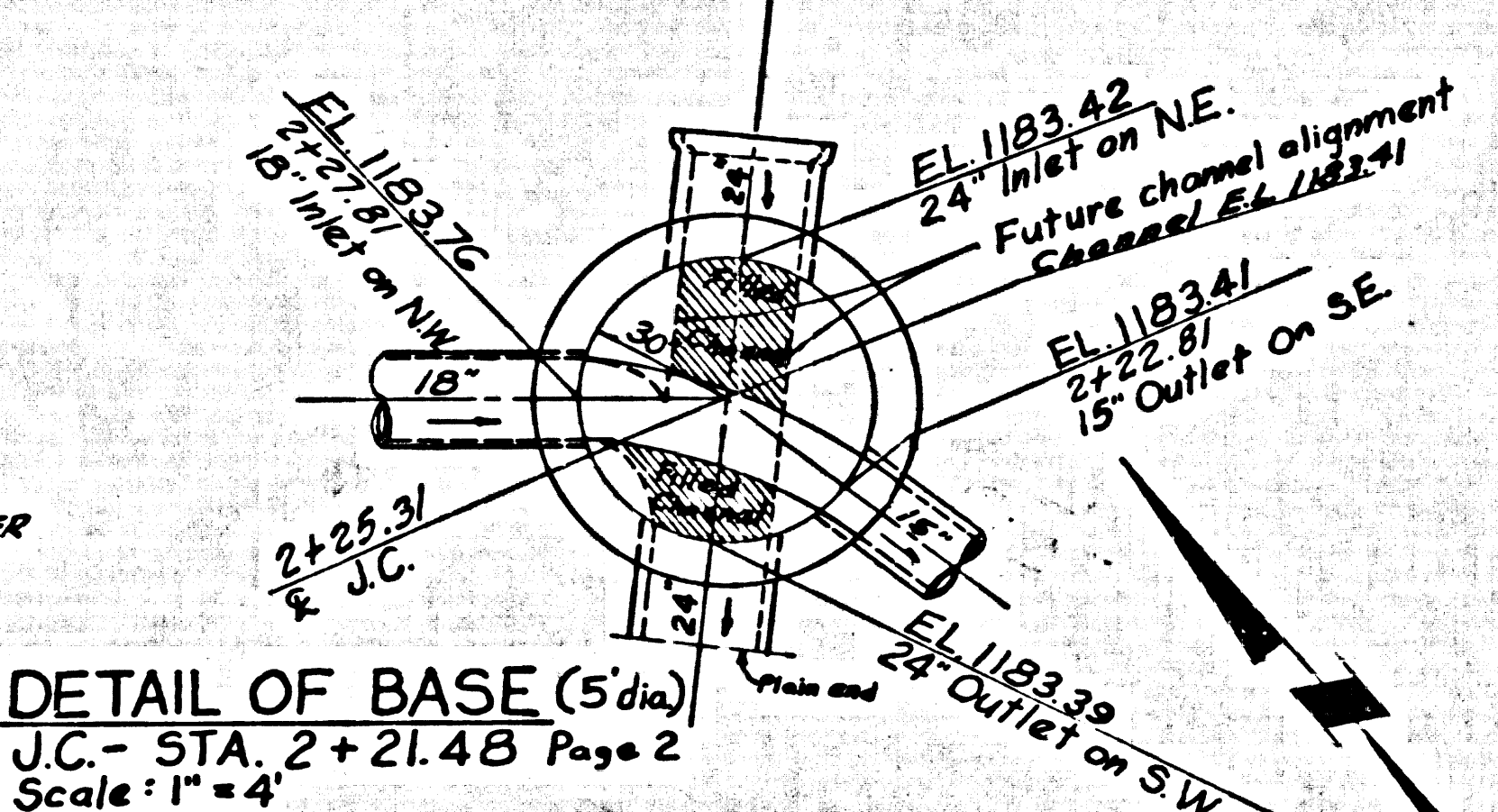
NOTE: CONTRACTOR MUST CONTACT WITH ST. FRANCIS TEL. CO. 4 HOURS PRIOR TO EXCAVATION IN VICINITY OF TEL. CABLE - TEL. (951) 233-0076 OR TEL. (951) 446-6224.



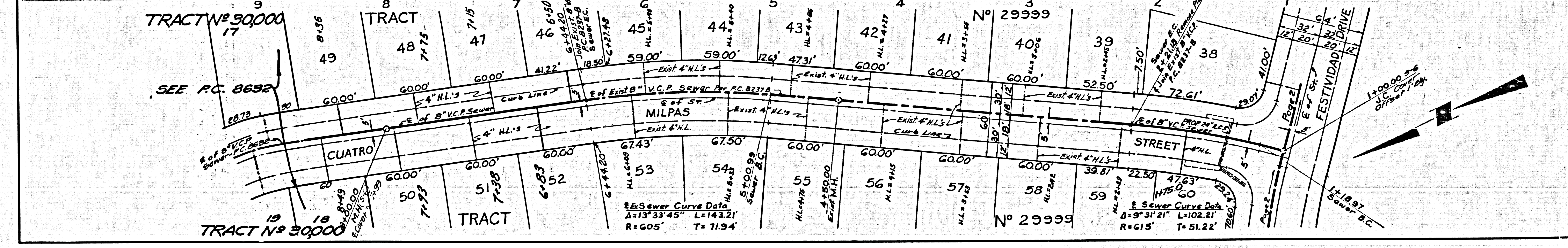
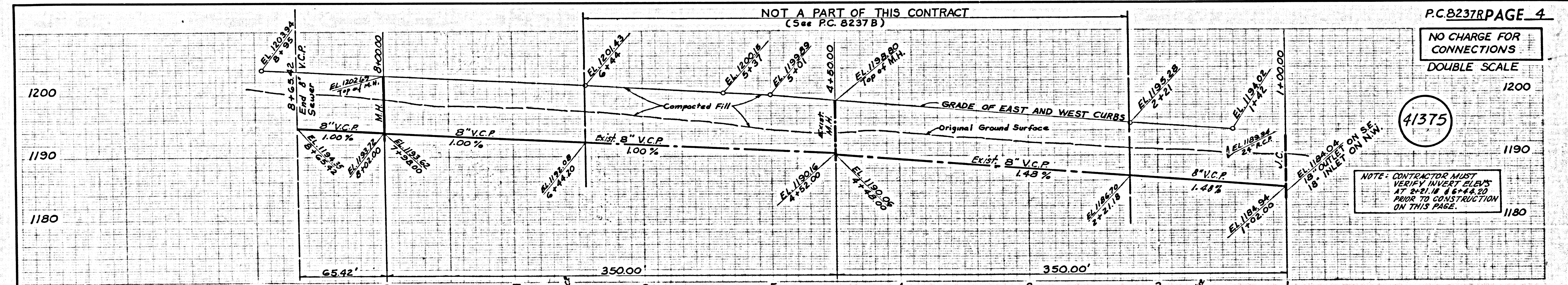
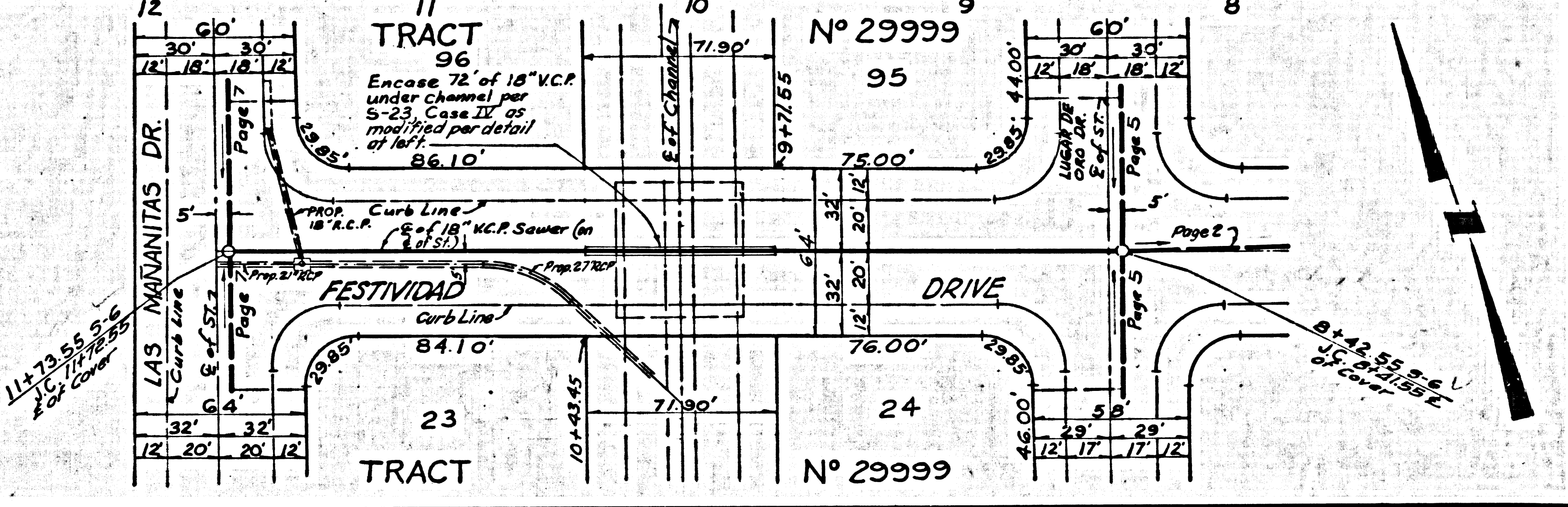
DETAIL OF SPECIAL CONCRETE ENCASUREMENT  
SCALE: 1/2" = 4'  
(S-23, CASE 12, MODIFIED)  
1. TERMINATE LONGITUDINAL BARS 3" FROM EACH END OF ENCASUREMENT.  
2. NO BOND BETWEEN CONCRETE CHANNEL AND ENCASUREMENT ON SEWER IS PERMITTED.

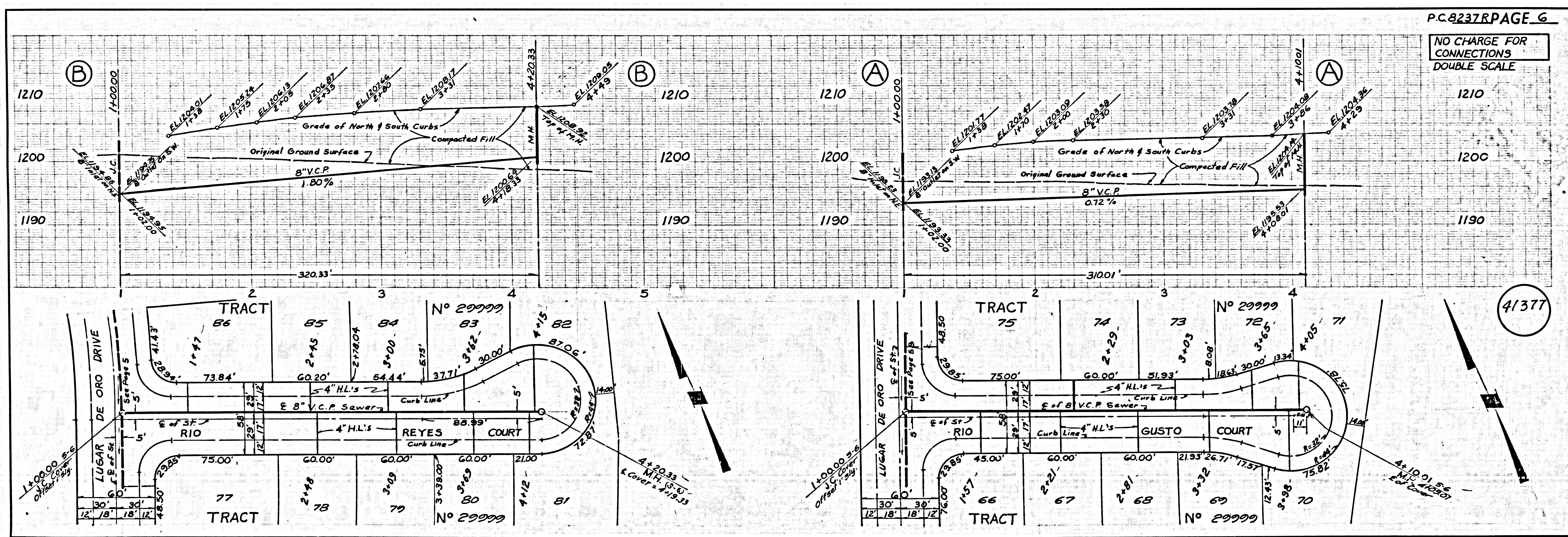
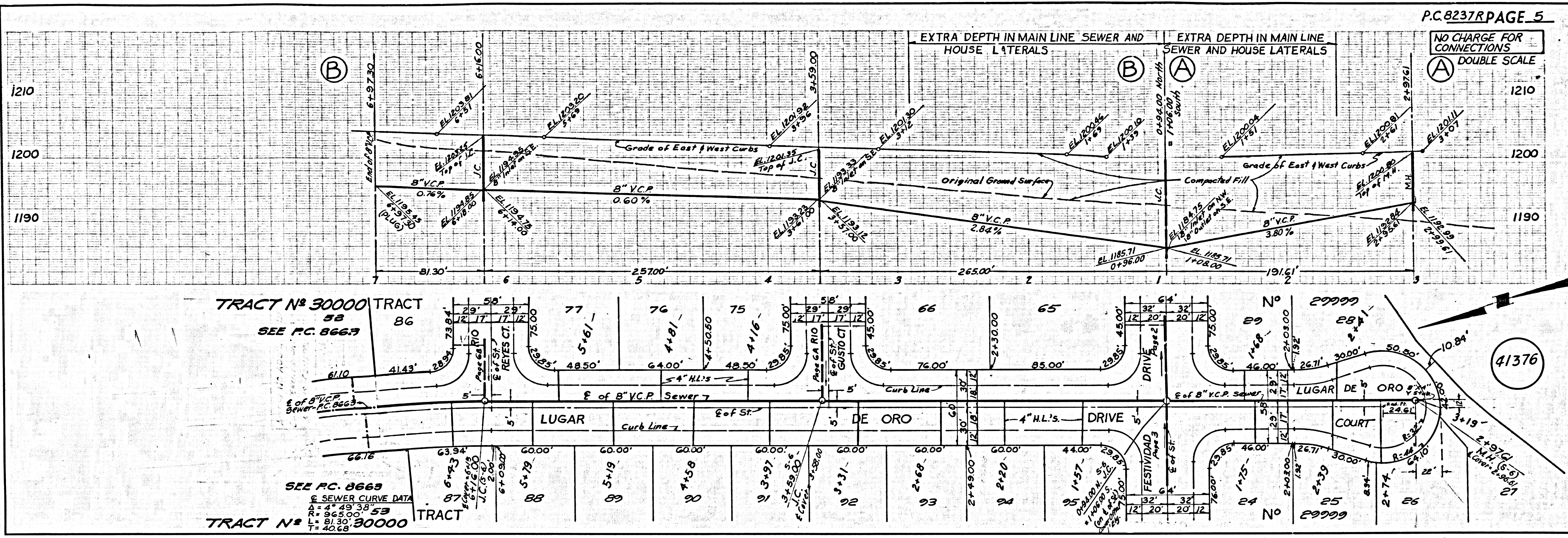


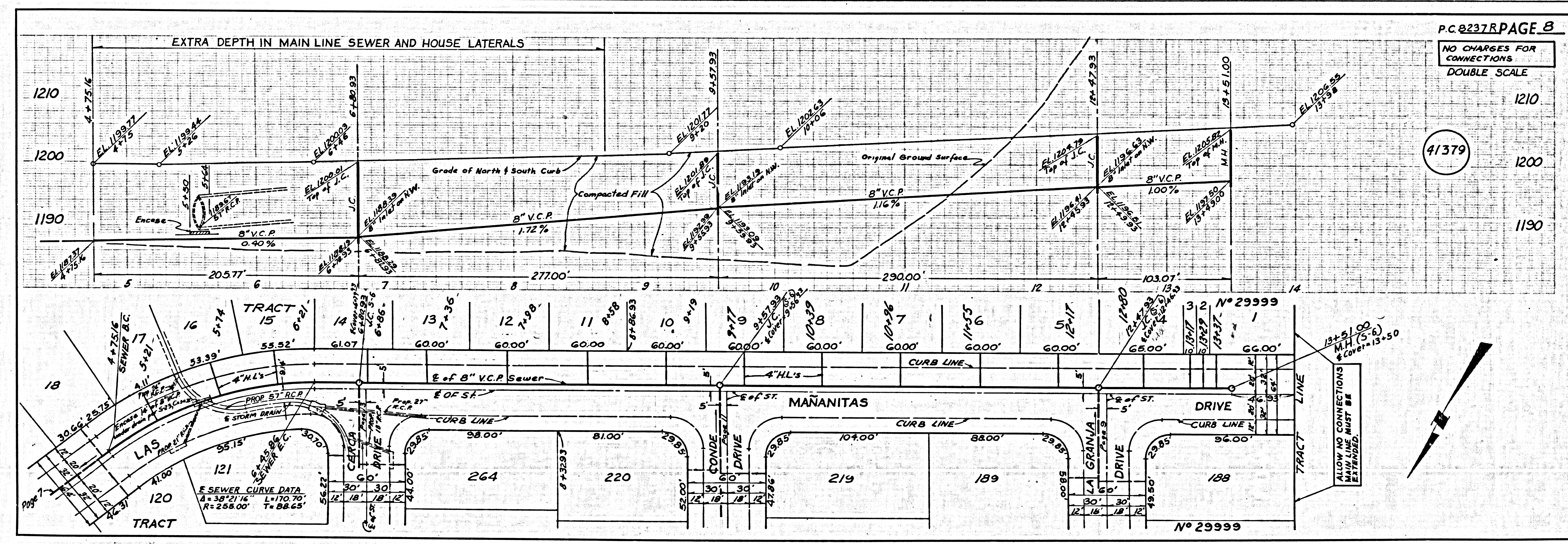
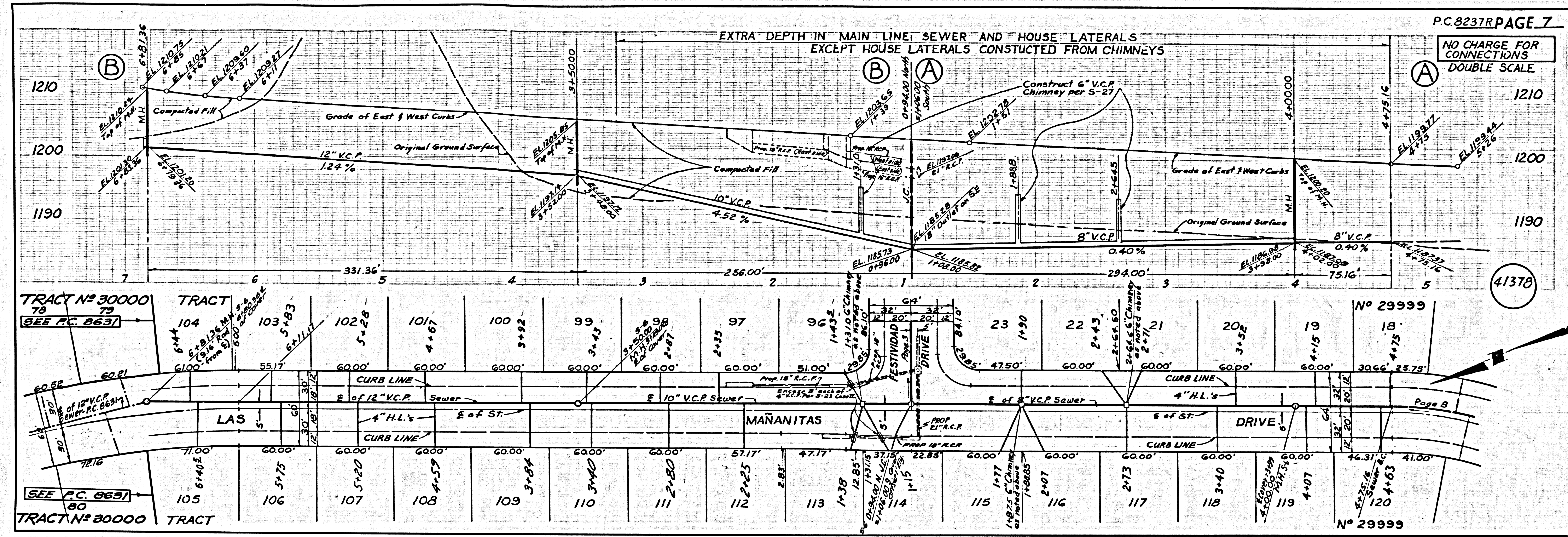
Scale: 1" = 20'  
DETAIL SHOWING LOCATION OF PILES (SYMMETRICAL ABOUT C OF ST.)



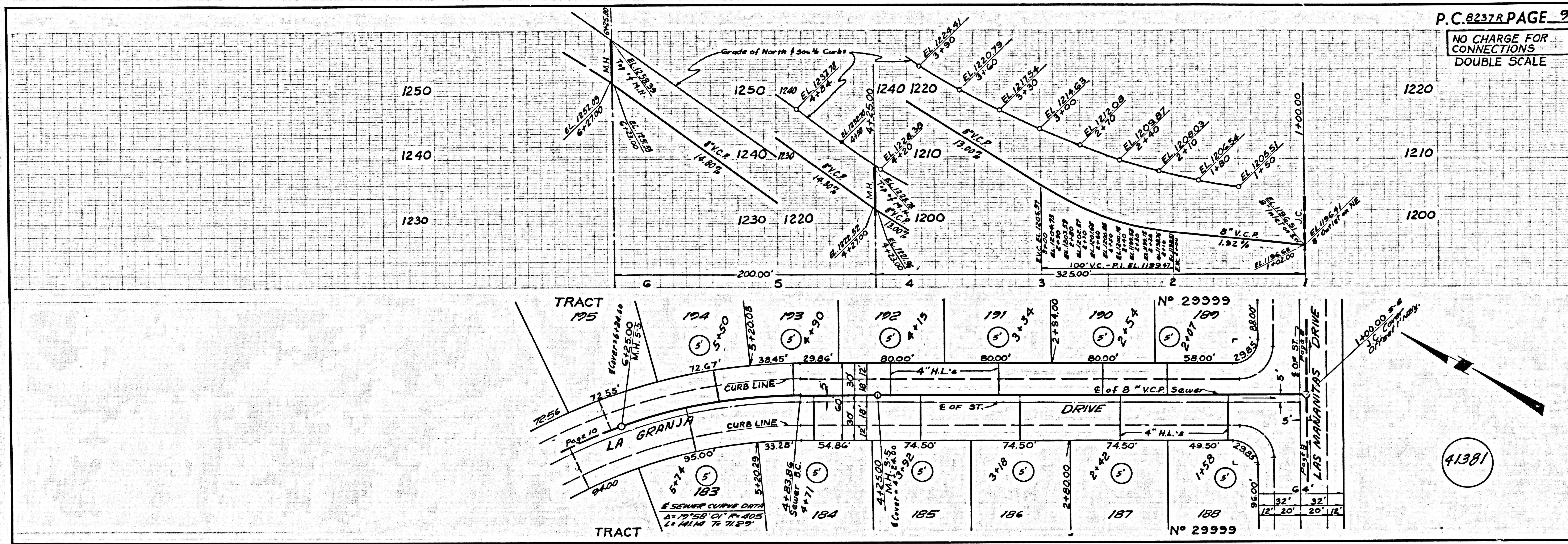
DETAIL OF BASE (5' dia)  
J.C. - STA. 2+21.48 Page 2  
Scale: 1" = 4'  
NOTE: Construct channels as shown. Plug 24" inlet & outlet stubs with brick & cement mortar. Partially fill channels on N.E. and S.W. with sand and finish with 1 1/2" cement mortar.



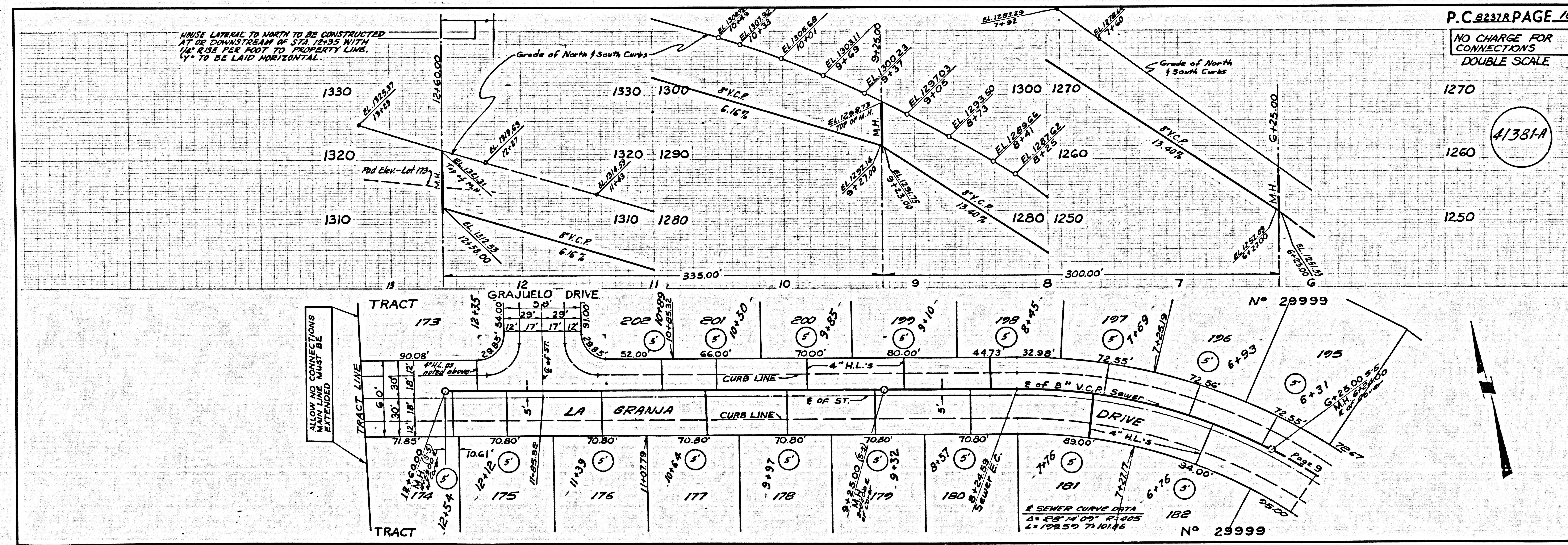




NO CHARGE FOR CONNECTIONS  
DOUBLE SCALE



NO CHARGE FOR CONNECTIONS  
DOUBLE SCALE



9 8237 R PAGE 9  
9 8231 R PAGE 10

