

REFERENCE DRAWINGS	
NO.	DESCRIPTION
W-182	L.A. COUNTY SUP-STRUCTURE MAP
J-O-4-55	60" JOINT OFFFALL PROFILE
J-O-4-14	60" JOINT OFFFALL PROFILE
D-920	CALC. FOR MANNAY
DDR-20818	MANWAY DETAILS
DDR-60657	MATERIAL SPEC'S
MD-60601	MATERIAL LIST

PRIVATE CONTRACT NO 8241
(WILMINGTON AVE ONLY)
PRIVATE SEWER
LENOX BLDG DIST NO 7
W.S. 26 SHT. 1

41457

NOTES

- ELEVATIONS ARE IN FEET ABOVE USCG 1985 SEA LEVEL DATUM OF 1929
- THIS DWG AND THE DATA HEREON ARE HEREBY MADE A PART OF THE SPECS
- WORK SHALL BE CONSTRUCTED ACCORDING TO THE STD SPECS FOR PUBLIC WORKS CONSTRUCTION AND SPECIAL PROVISIONS FOR THE CONSTRUCTION OF SANITARY SEWERS DATED 12-29-85 REVISED AND SHALL BE PROTECTED ONLY IN THE PRESENCE OF THE CO ENGR
- BEFORE WORK CAN BE STARTED THE CONTRACTOR MUST OBTAIN A PERMIT TO EXCAVATE IN CITY STREETS FROM THE L.A. CO. RD. DEPT. DIST. OFFICE NO. 3 AND PAY A FEE TO THE CO. ENGR. RM. 220 22 ENGR. BLDG. 108 W 2ND ST. OR PALMS FEE 111 THE L.A. VALLEY REGIONAL OFFICE SUFFICIENT TO COVER THE COST OF CONSTRUCTION INSPECTION AND RECORD PLANS.
- APPROVAL OF THIS PLAN BY THE COUNTY OF LOS ANGELES DOES NOT CONSTITUTE A REPRESENTATION AS TO THE ACCURACY OF THE LOCATION OF OR THE EXISTENCE OR NON-EXISTENCE OF ANY UNDERGROUND UTILITY PIPE, OR STRUCTURE WITHIN THE LIMITS OF THIS PROJECT
- NO REPRESENTATIVE OF THE CO. ENGR. WILL SURVEY OR LAYOUT ANY PORTION OF THE WORK
- NO REVISIONS SHALL BE MADE IN THESE PLANS WITHOUT THE APPROVAL OF THE CO. ENGR.
- THE CONTRACTOR SHALL NOTIFY THE CONSTRUCTION DIV BY TELEPHONE, MADISON 4-4747 EXT 81551 AT LEAST 24 HR. BEFORE STARTING ANY WORK UNDER THIS CONTRACT.
- ALL STRUCTURES SHALL BE EITHER BRICK MANHOLES PER S-3 OR PRECAST CONCRETE MANHOLES PER S-5 OR S-6 EXCEPT AS NOTED
- IF A POWER POLE IS WITHIN 3'-0" OF THE SEWER THE SEWER SHALL BE ENCASED PER S-23 2'-0" ON EACH SIDE FROM THE POINT OF INTERFERENCE
- RESURFACE ALL TRENCHES WITHIN PAVED AREAS TO MEET L.A. CO. RD. DEPT. OR CALIF. STATE HIGHWAY REQUIREMENTS IN ACCORDANCE WITH PERMITS.
- REFER TO SEC 7-104.1 OF THE STD. SPECS, REGARDING SAFETY ORDERS.
- THE FOLLOWING LATEST REVISED STD. PLANS ON FILE IN THE OFFICE OF THE CO. ENGR. SHALL APPLY IN THE CONSTRUCTION OF THIS PROJECT:
LEGEND S-1 STD. MANHOLE STEP S-17
MIN. PUBLIC SAFETY REQUIREMENTS S-2 BEDDING FOR SEWER PIPE S-21
NON-REINF. PRECAST CONCRETE MANHOLE S-5 CRADLING AND ENCASEMENT S-23
REINF. PRECAST CONCRETE MANHOLE S-6 ALLOWABLE TRENCH WIDTH S-23
MANHOLE FRAME & COVER S-15
- THE 10" BORES SHALL BE DONE AFTER INSTALLATION OF THE 12" GATE VALVES PER SAN. DIST. STD. DWG. S-4-66
- 48 HR. PRIOR TO COMMENCEMENT OF ANY WORK ON THE 60" OR 66" SEWERS, THE CONTRACTOR SHALL CONTACT MR. ROBT. POWELL NE. 6-3047.
- NO WORK SHALL BE DONE ON 60" OR 66" SEWERS EXCEPT IN THE PRESENCE OF REPRESENTATION OF SAN. DIST. INSPECTOR.
- COAT LINES PER SHELL STD. SW-490-1
- GETTY OIL LINE TO BE ALTERED AS SHOWN ON APPROVAL OF GETTY OIL CO.

ACCTG
44 X 72.50 @ .85.00 = 68109.50
NOZZLE, REINF. PAD & PRESSURE TAPPING PROCEDURE, EXCAVATIONS IN STREET & REPAVING
44.6562.04.31 @ .15.11 = 68109.50
ALL OTHER

PRIVATE SEWER
COUNTY OF LOS ANGELES, CALIF.
JOHN A. LAMBIE COUNTY ENGINEER

APPROVED BY *Robert M. Miller* REGIONAL ENGR. DATE _____

CHECKED BY *Bernard J. Valery* DATE 2-17-69

REG. CE NO. 10653

J.D. PARKHURST CHIEF ENGR. CO SAN DIST NO 8

APPROVED BY *J.D. Parkhurst* OFFICE ENGR.

INDUSTRIAL WASTE
APPROVED BY *David Edmondson* DATE 2-20-69

NO.	DATE	DESCRIPTION	MADE	CHECKED	BY	APPROVED
2-4-69		2 LINES REVISED	TMS	JUT	JUT	
2-4-69		ADDED NOTES & MISC. CHANGES	TMS	JUT	JUT	

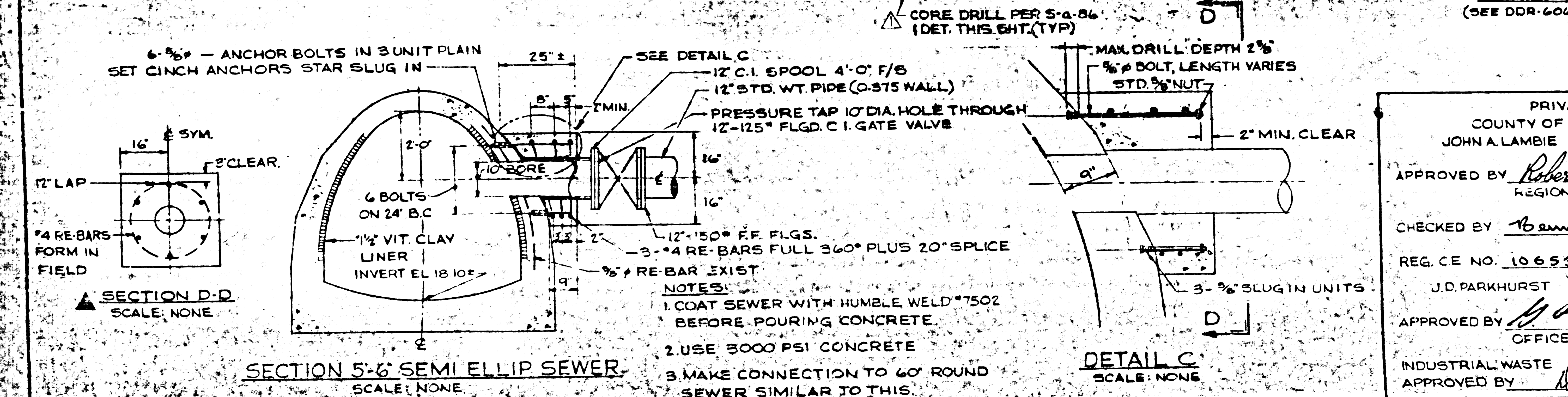
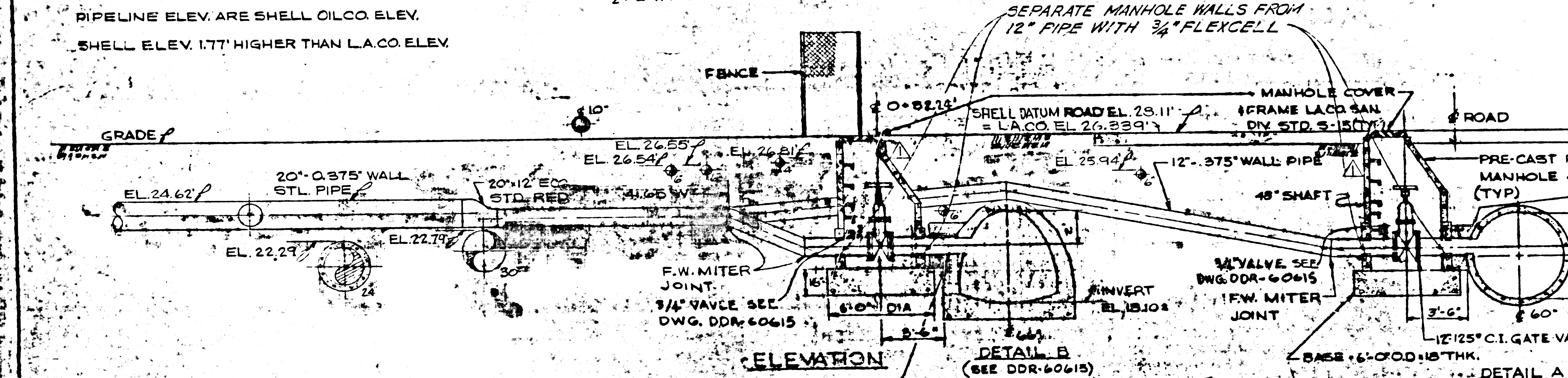
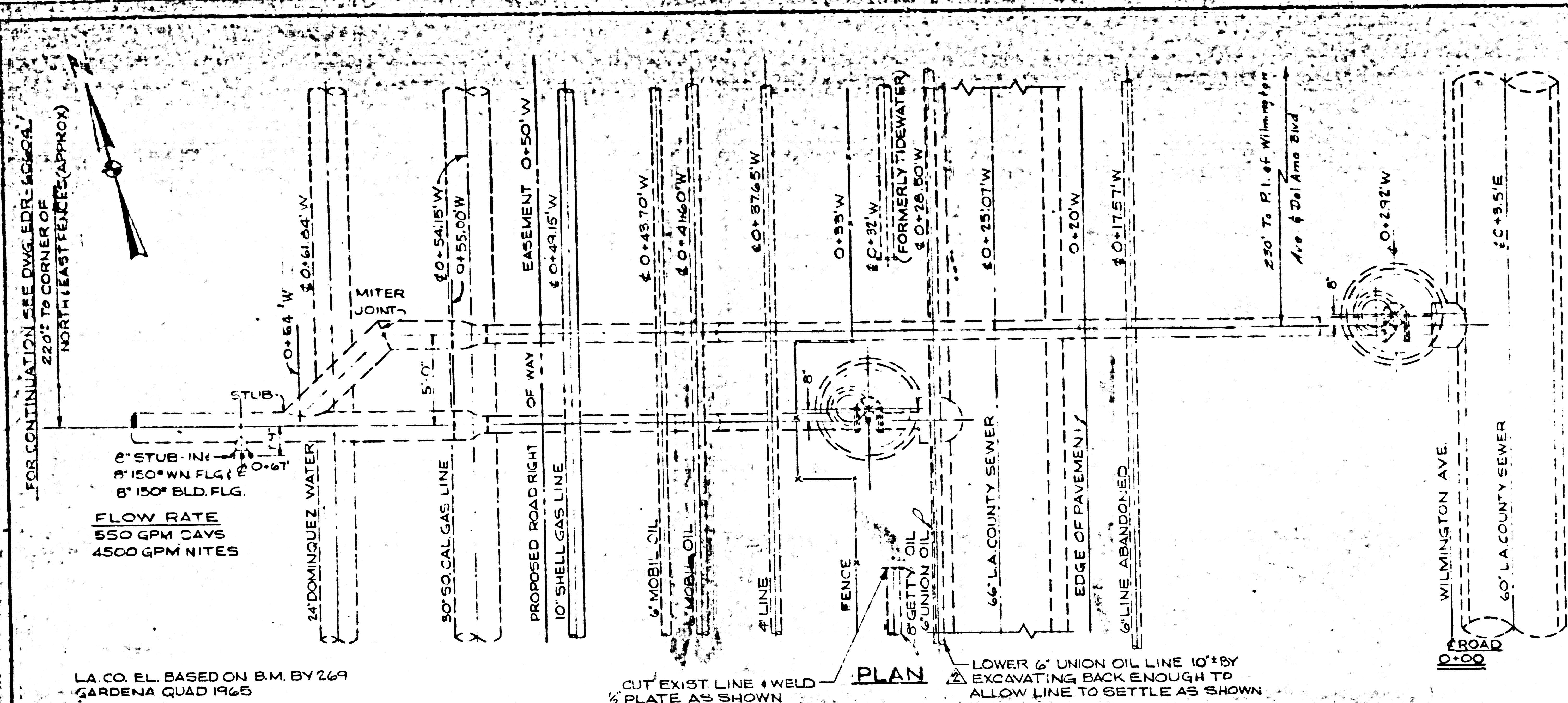
NOTICE: THIS PROJECT IS THE PROPERTY OF SHELL OIL COMPANY. WITHOUT THE WRITTEN PERMISSION OF SHELL OIL COMPANY, NO PART OF THIS PROJECT SHALL BE REPRODUCED OR TRANSMITTED IN ANY FORM OR BY ANY MEANS, WITHOUT THE WRITTEN PERMISSION OF SHELL OIL COMPANY. THE SECRETARY OF SUCH LABOR, AGREES TO THE PERSONAL OBLIGATIONS AND TO RETURN THIS PROJECT, UPON REQUEST.

SHELL OIL COMPANY
WILMINGTON REFINERY

EFFLUENT CONNECTION ARRANGEMENT
AT 60" x 60" L.A. CO. SEWER
EAST FENCE WILM AVE B-29 DOM REPLY

DRAWN: TMS DATE: 10-29-67
SCALE: 1" = 1'-0"
CHECKED: JUT APPROVED: JUT
APPROVED: B.K. APPROVED: JUT

EDR-60605-2



FOR CONTINUATION SEE DWG. EDR-60604
220' TO CORNER OF
NORTH/EAST FENCE (APPROX)

FLOW RATE
550 GPM CAVS
4500 GPM NITES

L.A. CO. EL. BASED ON B.M. BY 269
GARDENA QUAD 1965
PIPELINE ELEV. ARE SHELL OIL CO. ELEV.
SHELL ELEV. 1.77' HIGHER THAN L.A. CO. ELEV.

CUT EXIST LINE & WELD
1/2 PLATE AS SHOWN

LOWER 6" UNION OIL LINE 10" BY
EXCAVATING BACK ENOUGH TO
ALLOW LINE TO SETTLE AS SHOWN

SEPARATE MANHOLE WALLS FROM
12" PIPE WITH 3/4" FLEXCELL

6-#6 - ANCHOR BOLTS IN 3 UNIT PLAIN
SET CINCH ANCHORS STAR SLUG IN

MAX. DRILL DEPTH 2'
5/8" BOLT, LENGTH VARIES
STD. 3/4" NUT

NOTES:
1. COAT SEWER WITH HUMBLE WELD #7502
BEFORE POURING CONCRETE.
2. USE 3000 PSI CONCRETE
3. MAKE CONNECTION TO 60" ROUND
SEWER SIMILAR TO THIS

DETAIL C
SCALE: NONE