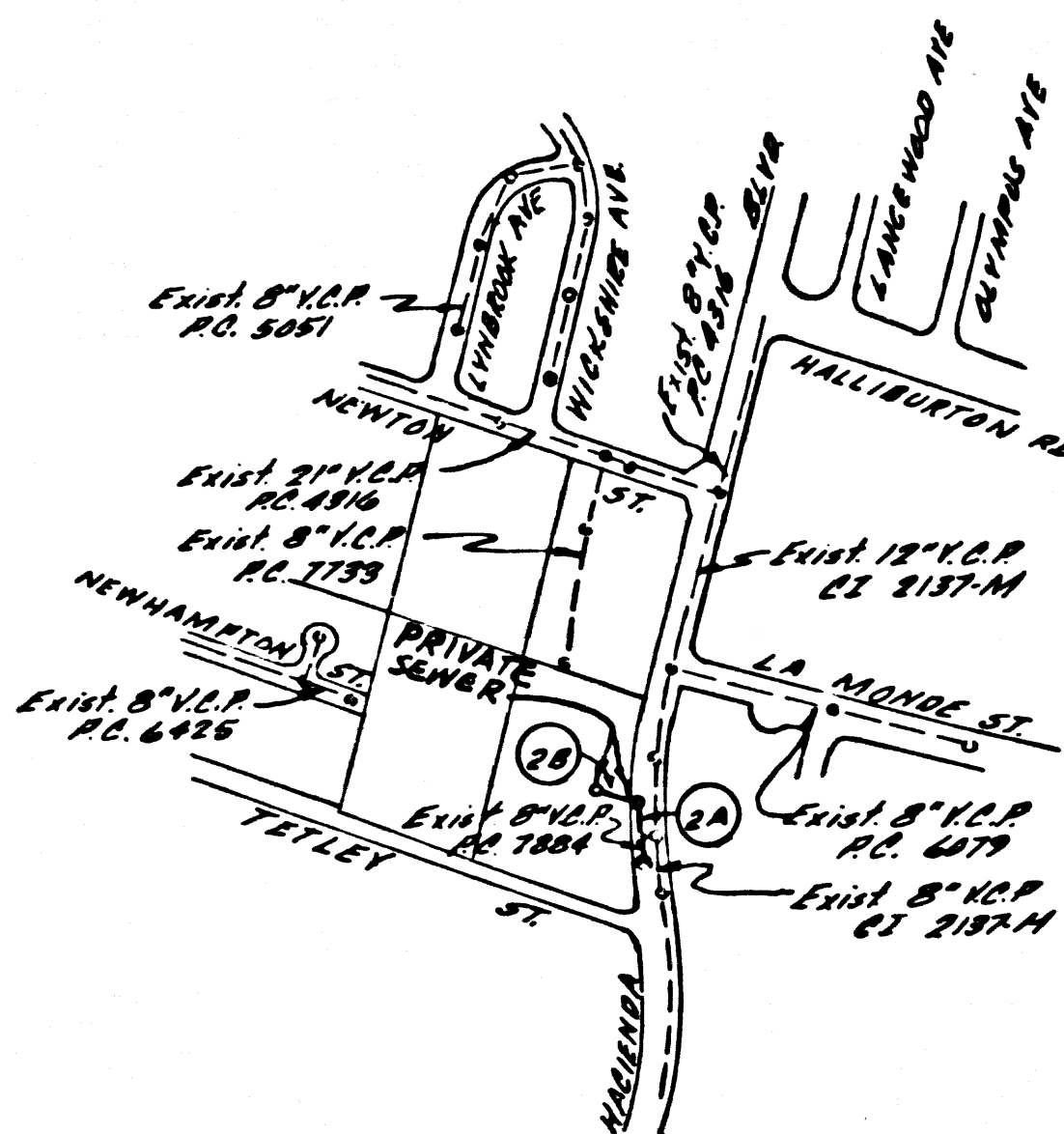


B.M. B.C. 3096 ELEV. 436.169  
 C.S. B.M. Maa in well 8" Dia. N.W. Cor.  
 Hacienda Blvd & Tetley St. 43' W & 55'  
 N approx. & Int. M&D (B.M. 38-10A 1943)  
 BASELINE QUAD. 1965



INDEX MAP  
 P.C. 8243  
 SCALE 1"=600'

THE FOLLOWING LATEST REVISION STANDARD PLANS ON FILE IN THE OFFICE OF THE COUNTY ENGINEER SHALL APPLY IN THE CONSTRUCTION OF THIS PROJECT

Legend	S-1
Min. Public Safety Requirements	S-2
Brick Manhole	S-3
Non Reinforced Precast Concrete Manhole	S-5
Reinforced Precast Concrete Manhole	S-6
Manhole Frame and Cover	S-15
8" V.C.P. Manhole	S-17
Bedding for Sewer Pipe	S-21
Crestline and Encasement	S-23
Use of Tee Support	S-28
Allowable Trench Widths	S-33
Rectangular Shallow Manhole	S-7
Rectangular Manhole Frame & Cover	S-16

LA PUENTE BLDG. DIST. NO. 2

- NOTES:
1. PROVIDE STAKES ON THE PROPERTY LINE OR PROPERTY LINES PRODUCED AT RIGHT ANGLES TO THE SEWER LINE AT THE CENTER LINE OF EACH MANHOLE.
  2. NO REPRESENTATIVE OF THE COUNTY ENGINEER WILL SURVEY OR LAY OUT ANY PORTION OF THE WORK.
  3. THE PRIVATE ENGINEER SHALL FURNISH THE COUNTY ENGINEER WITH GRADE SHEETS AND STATIONING FOR ALL HOUSE LATERALS AND "T" OR "Y" BRANCHES AND SHALL PROVIDE GRADES FOR THEM AT THEIR PROPER LOCATIONS WITH STATIONING PLAINLY MARKED. ALL HOUSE LATERALS SHALL BE CONSTRUCTED IN A STRAIGHT ALIGNMENT AT RIGHT ANGLES FROM THE MAIN LINE SEWER EXCEPT AS SHOWN ON THE PLANS. HOUSE LATERALS FROM CHIMNEYS SHALL NOT HAVE AN ANGLE OF LESS THAN 45° WITH THE MAIN LINE SEWER. ANY CHANGE IN ALIGNMENT SHALL BE REQUESTED IN WRITING BY THE PRIVATE ENGINEER.
  4. THE PRIVATE ENGINEER SHALL FURNISH THE HOUSE LATERAL DEPTH AT THE PROPERTY LINE BELOW THE TOP OF CURB ELEVATION FOR EACH HOUSE LATERAL ON THE GRADE SHEET.
  5. NO REVISIONS SHALL BE MADE IN THESE PLANS WITHOUT THE APPROVAL OF THE COUNTY ENGINEER.
  6. THE CONTRACTOR SHALL NOTIFY THE CONSTRUCTION DIVISION BY TELEPHONE, BUSINESS 9-4747, EXT. 8158, AT LEAST TWENTY-FOUR HOURS BEFORE STARTING ANY WORK UNDER THIS CONTRACT.
  7. ALL STRUCTURES SHALL BE EITHER BRICK MANHOLES PER S-3 OR PRECAST CONCRETE MANHOLES PER S-5 OR S-6, EXCEPT AS NOTED.
  8. "Y" OR "T" BRANCHES MAY BE USED FOR CONNECTIONS TO EXISTING SEWERS EXCEPT AS NOTED.
  9. MANHOLE TOPS IN IMPROVED RIGHTS-OF-WAY TO BE LEVEL WITH FINISHED GRADE.
  10. USE EXTRA STRENGTH PIPE. ALL PIPE IS STANDARD DEPTH EXCEPT AS NOTED.
  11. *Whitford Clay Pipe shall be Type D, F, or G per Standard Specifications, Section 208.2.*
  12. IF A POWER POLE IS WITHIN THREE FEET OF THE SEWER, THE SEWER SHALL BE ENCASED, PER S-23, TWO FEET ON EACH SIDE FROM THE POINT OF INTERFERENCE.
  13. IF DURING THE COURSE OF CONSTRUCTION IT IS DETERMINED THAT THERE IS LESS THAN FOUR FEET OF COVER OVER THE TOP OF A MAIN LINE OR HOUSE LATERAL V.C.P. SEWER WHICH IS NOT INDICATED ON THE PLANS, THE PIPE SHALL BE ENCASED PER S-23, UNLESS OTHERWISE APPROVED BY THE COUNTY ENGINEER.
  14. HOUSE LATERALS TO BE CONSTRUCTED WITH INVERTS AT PROPERTY LINE & FEET BELOW CURB GRADE EXCEPT AS NOTED.
  15. RESURFACE ALL TRENCHES WITHIN PAVED AREAS TO MEET L.A. COUNTY ROAD DEPT. OR CALIFORNIA STATE HIGHWAY REQUIREMENTS IN ACCORDANCE WITH PERMITS.
  16. SEWER TO BE TESTED FOR LEAKAGE PER SECTION 206-2.2.7 STANDARD SPECIFICATIONS.
  17. Refer to Section 206.2.1 of the Standard Specifications, regarding utility work.
  18. All joints between cast iron pipe and vitrified clay pipe shall be made with a rubber sleeve joint, Type 4" or 5" (with backing if necessary) per Standard Specifications, Section 208.2.

County Sanitation Districts shall be notified prior to the following as that required inspection can be made (Plans 237-1025 - 4-6-69-997)

Acceptance of the project.

COLLECT CHARGES AS INDICATED

No excavations for the disposal of industrial wastes shall be made to depths shown on these drawings without written permission from the Chief Engineer and General Manager of the County Sanitation Districts.

PROFILE ALIGNMENT AND GRADE OF  
 SANITARY SEWERS P.C. 8243  
 CONSTRUCTED IN PAGE 1

HACIENDA BLVD  
 (PARTIALLY PRIVATE SEWER)  
 PRIVATE CONTRACT NO. 8243

W.S. 38-A-3

1 SHEET OF 2 PAGES

SCALE: VERT. 1"=6' HORIZ. 1"=40'

PREPARED IN THE OFFICES OF

EVANS & ASSOCIATES, INC.

1543 W. Garvey Ave. 900-4001 West Covina

By: Ronald Williamson 1-16-69

REG. C. E. NO. 12422

40838

NOTES:  
 GRADES TO WHICH THE IMPROVEMENT IS TO BE CONSTRUCTED ARE SHOWN ON PLANS AND PROFILES. GRADE POINTS FOR TOP OF CURBS, CENTER LINE OF STREETS, OR CENTER LINE OF ALLEYS ARE SHOWN BY CIRCLES ON PROFILES AT ALL POINTS BETWEEN DESIGNATED POINTS. THE GRADE SHALL BE ESTABLISHED SO AS TO CONFORM TO A STRAIGHT LINE DRAWN BETWEEN SAID DESIGNATED POINTS. ELEVATIONS ARE IN FEET ABOVE U.S.C. & G.S. SEA LEVEL DATUM OF 1929.  
 MORE SHALL BE CONSTRUCTED ACCORDING TO THE STANDARD SPECIFICATIONS FOR PUBLIC CONDUITS AND SPECIAL PROVISIONS FOR THE CONSTRUCTION OF SANITARY SEWERS DATED 1-1-68 AS REVISED, AND SHALL BE PROSECUTED ONLY IN THE PRESENCE OF THE COUNTY ENGINEER.  
 BEFORE WORK CAN BE STARTED, THE CONTRACTOR MUST OBTAIN A PERMIT TO EXCAVATE IN COUNTY STREETS FROM THE L.A. COUNTY ROAD DEPT., DISTRICT OFFICE NO. 201, 1543 W. GARVEY AVE. AND PAY A FEE TO THE COUNTY ENGINEER, ROOM 236, COUNTY ENGINEERING BUILDING, 108 WEST SECOND STREET IN THE COUNTY OF LOS ANGELES DISTRICT OFFICE, SUFFICIENT TO COVER THE COST OF CONSTRUCTION INSPECTION AND RECORD PLANS.  
 APPROVAL OF THIS PLAN BY THE COUNTY OF LOS ANGELES DOES NOT CONSTITUTE A REPRESENTATION AS TO THE ACCURACY OF THE LOCATION OF OR THE EXISTENCE OR NON-EXISTENCE OF ANY UNDERGROUND UTILITY PIPE, OR STRUCTURE WITHIN THE LIMITS OF THIS PROJECT. THIS NOTE APPLIES TO ALL PAGES.  
 IF WORK IS TO BE DONE IN A STATE HIGHWAY, A PERMIT MUST BE OBTAINED FROM THE STATE OF CALIFORNIA, DIVISION OF HIGHWAYS, 120 SOUTH SPRING STREET, LOS ANGELES, CALIFORNIA.

COUNTY OF LOS ANGELES, CALIFORNIA

JOHN A. LAMBIE, COUNTY ENGINEER

J. D. PARKHURST, CHIEF ENGINEER

APPROVED BY: [Signature]

APPROVED BY: [Signature]

CHECKED BY: [Signature] 1-29-69  
 REG. C.E. NO. 10883

