

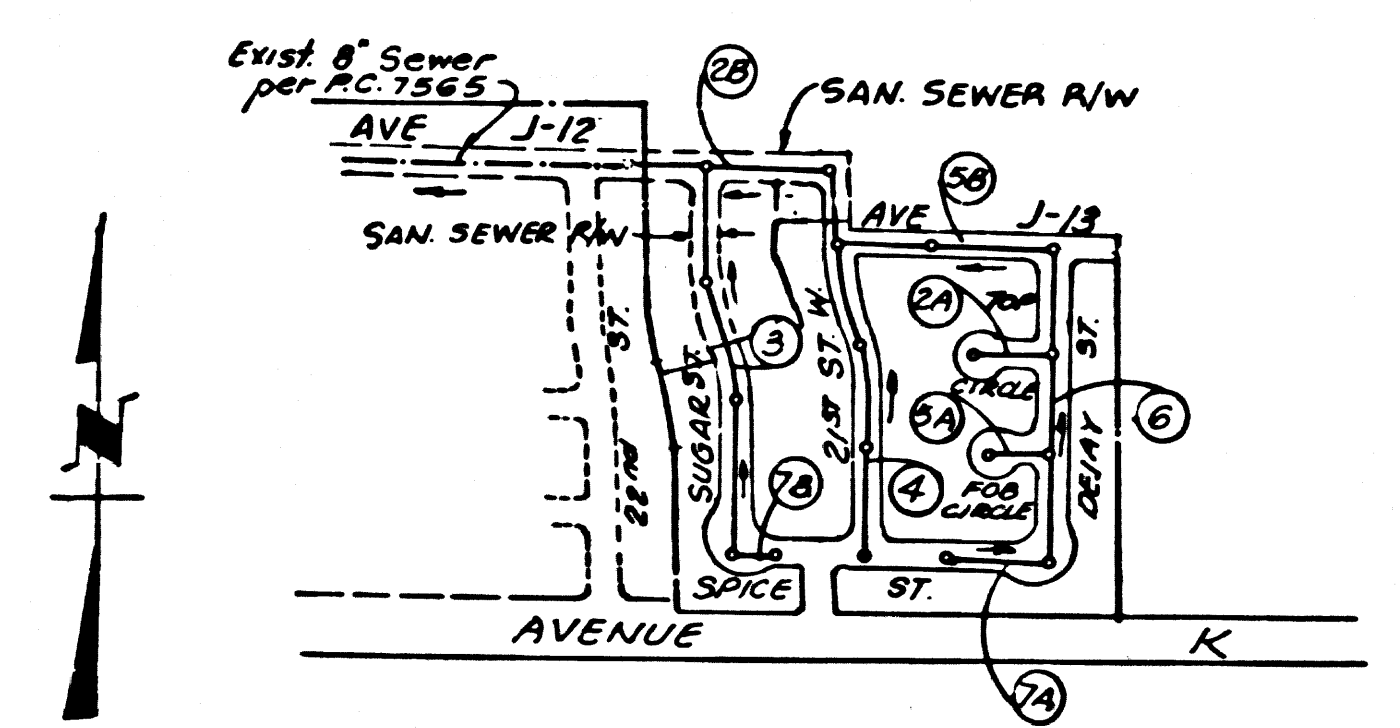
B. M. S.L.-721 ELEV. 2388.228
 L&T. CONC. DRIVE NEAR CONC. BLOCK POST
 ± 42' S. & AVE. "K" ± 263' W. & 25TH ST. W. MKD BM
 LANCASTER QUAD 1962

LANCASTER. BLDG. DIST. NO. 8

PROFILE ALIGNMENT AND GRADE OF P.C. 8245
 SANITARY SEWERS PAGE 1
 CONSTRUCTED IN

TRACT NO. 26603
 PRIVATE CONTRACT NO. 8245

W.S. 71
 4 SHEETS OF 7 PAGES 41121
 SCALE: VERT. 1"=4' HORIZ. 1"=40'
 NOVEMBER, 1968
 PREPARED IN THE OFFICES OF
 SCHORR ENGINEERS
 13605 VICTORY BOULEVARD
 VAN NUYS, CALIFORNIA
 REG. C. E. NO. 12,255



INDEX MAP
 TRACT NO. 26603
 SCALE: 1"=600'
 P.C. 8245

COLLECT CHARGES
 AS INDICATED

- NOTES:
1. PROVIDE STAKES ON THE PROPERTY LINE OR PROPERTY LINES PRODUCED AT RIGHT ANGLES TO THE SEWER LINE AT THE CENTER LINE OF EACH MANHOLE.
 2. NO REPRESENTATIVE OF THE COUNTY ENGINEER WILL "SWEET OR LAY OUT" ANY PORTION OF THE WORK.
 3. THE PRIVATE ENGINEER SHALL FURNISH THE COUNTY ENGINEER WITH GRADE SHEETS AND STATIONING FOR ALL HOUSE LATERALS AND Y-OR-T BRANCHES. ALL HOUSE LATERALS SHALL BE CONSTRUCTED IN A STRAIGHT ALIGNMENT AT RIGHT ANGLES FROM THE MAIN LINE SERVICE EXCEPT AS SHOWN ON PLANS. HOUSE LATERALS SHALL BE CONSTRUCTED WITH A MINIMUM OF 12" COVER. ANY CHANGE OF ALIGNMENT SHALL BE IN WRITING BY THE PRIVATE ENGINEER. THE HOUSE LATERAL SHALL BE AT THE PROPERTY LINE BELOW THE TOP OF CURB. PROVIDE PERMITS FOR EACH HOUSE LATERAL ON THE GRADE SHEET.
 4. NO REVISIONS SHALL BE MADE IN THESE PLANS WITHOUT THE APPROVAL OF THE COUNTY ENGINEER.
 5. USE STEEL REINFORCED PIPE. ALL PIPES TO BE SHOWN WITH PERMITS EXCEPT AS NOTED.
 6. VITRIFIED CLAY PIPE JOINTS SHALL BE TYPE "D" PER STANDARD SPECIFICATIONS SECTION 808-2.
 7. "Y" OR "T" BRANCHES MAY BE USED FOR CONNECTIONS TO MAINLINE SEWERS, EXCEPT AS NOTED.
 8. RESURFACE ALL TRENCH WITHIN PAVED AREA TO MEET L.A. COUNTY ROAD DEPT. REQUIREMENTS IN ACCORDANCE WITH PERMITS.
 9. IF A RIVER POLE IS WITHIN THREE FEET OF THE SEWER, THE SEWER SHALL BE ENCASED PER 3-23, TWO FEET ON EACH SIDE FROM POINT OF INTERFERENCE.
 10. HOUSE LATERALS TO BE CONSTRUCTED WITH INVERTS AT PROPERTY LINE ± 6 FEET BELOW CURB GRADE EXCEPT AS NOTED.
 11. ALL STRUCTURES SHALL BE EITHER BRICK MANHOLE PER 3-3 OR PRE-CAST CONC. MANHOLES PER 5-5 OR 5-6, EXCEPT AS NOTED.
 12. SEWERS TO BE TESTED FOR LEAKAGE PER SECTION 806-2-B.1 OF STANDARD SPECIFICATIONS.
 13. MANHOLE TOPS IN UNIMPROVED RIGHTS-OF-WAY TO BE SIX INCHES ABOVE FINISHED GRADE.
 14. THE CONTRACTOR SHALL NOTIFY THE COUNTY ENGINEER BY TELEPHONE, MADISON 9-474, EXT. 8551, AT LEAST TWENTY-FOUR HOURS BEFORE STARTING ANY WORK UNDER THIS CONTRACT.
 15. IF DURING THE COURSE OF CONSTRUCTION IT IS DETERMINED THAT THERE IS LESS THAN FIVE FEET OF COVER OVER THE TOP OF A MAINLINE OR HOUSE LATERAL, V.C.P. SERVICE WHICH IS NOT INDICATED ON THE PLANS, THE PIPE SHALL BE ENCASED PER 3-23. UNLESS OTHERWISE APPROVED BY THE COUNTY ENGINEER.
 16. REFER TO SECTION 7-10.4.1 OF STANDARD SPECIFICATIONS, REGARDING SAFETY ORDGES.
 17. ALL JOINTS BETWEEN CAST IRON PIPE AND VITRIFIED CLAY PIPE SHALL BE MADE WITH A RUBBER BLEND JOINT TYPE "C" OR "D", WITH BUSHING IF NECESSARY PER STANDARD SPECIFICATIONS SECTION 808-2.
 18. THE FOLLOWING LATEST REVISED STANDARD PLANS ON FILE IN THE OFFICE OF THE COUNTY ENGINEER SHALL APPLY IN THE CONSTRUCTION OF THIS PROJECT.

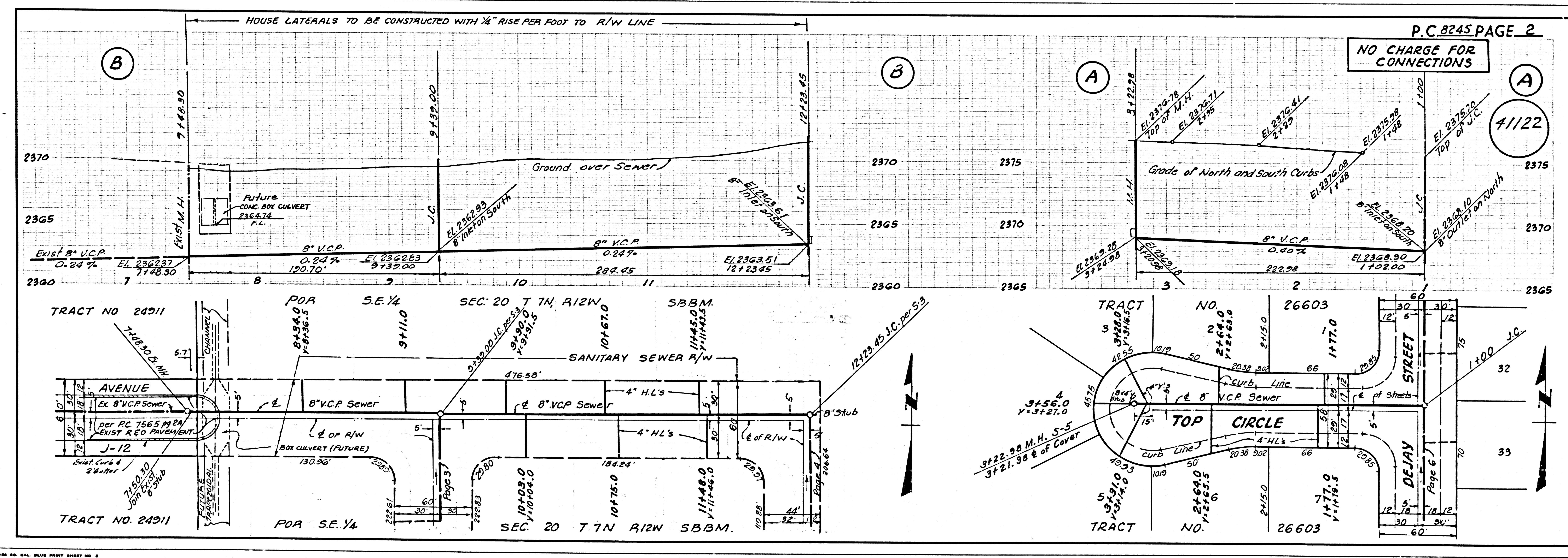
LEGEND

MINIMUM PUBLIC SAFETY REQUIREMENTS	5-1
BRICK MANHOLE	5-2
NON-REINFORCED PRECAST CONC. MANHOLE	5-3
REINFORCED PRECAST CONC. MANHOLE	5-4
MANHOLE FRAME AND COVER	5-5
STANDARD MANHOLE STEP	5-6
BEDDING FOR SEWER PIPE	5-7
CRADLING AND ENCASEMENT	5-8
WYE OR TEE SUPPORT	5-9
ALLOWABLE TRENCH WIDTHS	5-10

NOTE:
 GRADES TO WHICH THIS IMPROVEMENT IS TO BE CONSTRUCTED ARE SHOWN ON PLANS AND PROFILES. GRADE POINTS FOR TOP OF CURB, CENTER LINE OF STREETS OR CENTER LINE OF ALLEYS ARE SHOWN BY CIRCLES ON PROFILES. AT ALL POINTS BETWEEN DESIGNATED POINTS THE GRADE SHALL BE ESTABLISHED SO AS TO CONFORM TO A STRAIGHT LINE DRAWN BETWEEN SAID DESIGNATED POINTS.
 ELEVATIONS ARE IN FEET ABOVE U.S.C. & G.S. SEA LEVEL DATUM OF 1929.
 THIS DRAWING AND THE DATA HEREON ARE HEREBY MADE A PART OF THE SPECIFICATIONS.
 WORK SHALL BE CONSTRUCTED ACCORDING TO THE STANDARD SPECIFICATIONS FOR PUBLIC WORKS CONSTRUCTION AND PROVISIONS FOR THE CONSTRUCTION OF SANITARY SEWERS DATED JAN. 2, 1962 AS REVISED AND SHALL BE PROCEEDED BEFORE WORK CAN BE STARTED. THE CONTRACTOR MUST OBTAIN A PERMIT TO EXCAVATE IN COUNTY STREETS FROM THE L.A. COUNTY ROAD DEPT., DISTRICT OFFICE NO. 5 AND PAY A FEE TO THE COUNTY ENGINEER ROOM 330, COUNTY ENGINEER'S BUILDING, ONE W. SECOND ST. LOS ANGELES, CALIF. TO COVER THE COST OF CONSTRUCTION INSPECTION AND RECORD PLANS.
 APPROVAL OF THIS PLAN BY THE COUNTY OF LOS ANGELES DOES NOT CONSTITUTE A REPRESENTATION AS TO THE ACCURACY OF THE LOCATION OF OR THE EXISTENCE OR NON-EXISTENCE OF ANY UNDERGROUND UTILITY PIPE, OR STAKE, TIE WITHIN THE LIMITS OF THE PROJECT. THIS WORK APPLIES TO ALL PAGES OF THIS PROJECT.
 IF WORK IS TO BE DONE IN A STATE HIGHWAY, A PERMIT MUST BE OBTAINED FROM THE STATE OF CALIFORNIA, DIVISION OF HIGHWAYS, 120 SOUTH SPRING STREET, SACRAMENTO, CALIFORNIA.
 ONLY IN THE PRESENCE OF THE COUNTY ENGINEER.
 COUNTY OF LOS ANGELES, CALIFORNIA
 JOHN A. LAMBIE, COUNTY ENGINEER J. D. PARKHURST, CHIEF ENGINEER
 CO. 8245 DIST. NO. 1A
 APPROVED BY *[Signature]* 5-23-69 APPROVED BY *[Signature]*
 REGIONAL ENGINEER (DATE) OFFICE ENGINEER
 CHECKED BY *[Signature]* 5-23-69
 No. C. E. No. 12,255

bc 8542

bc 8542



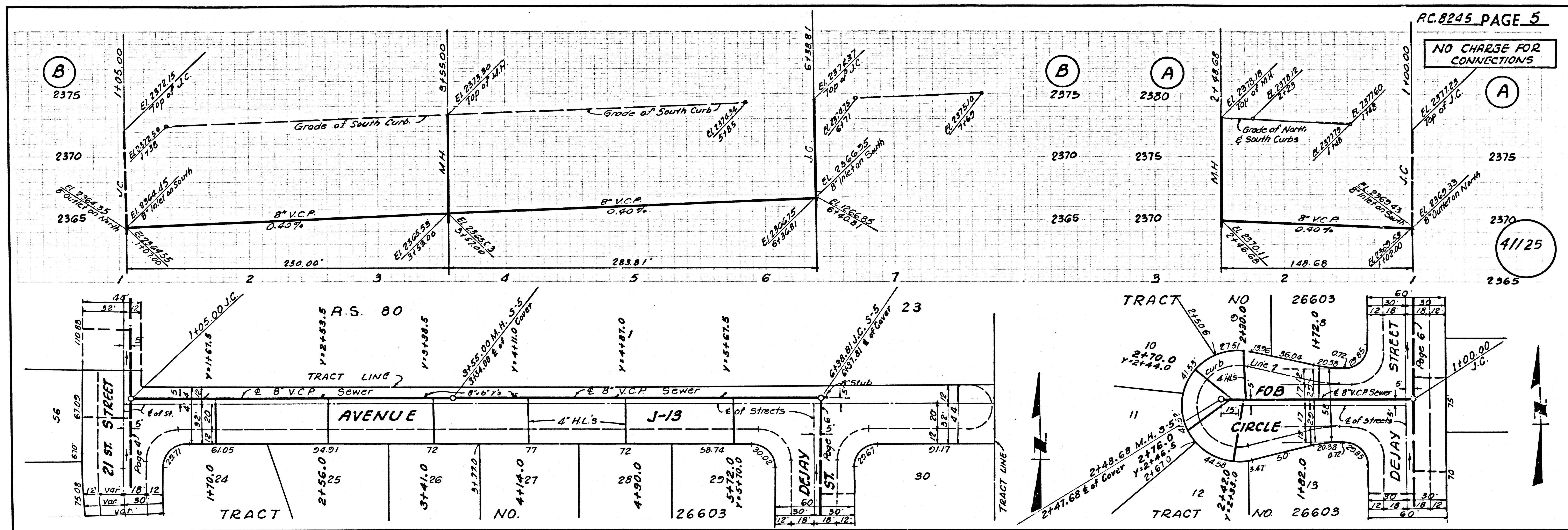
bc 8542

bc 8542

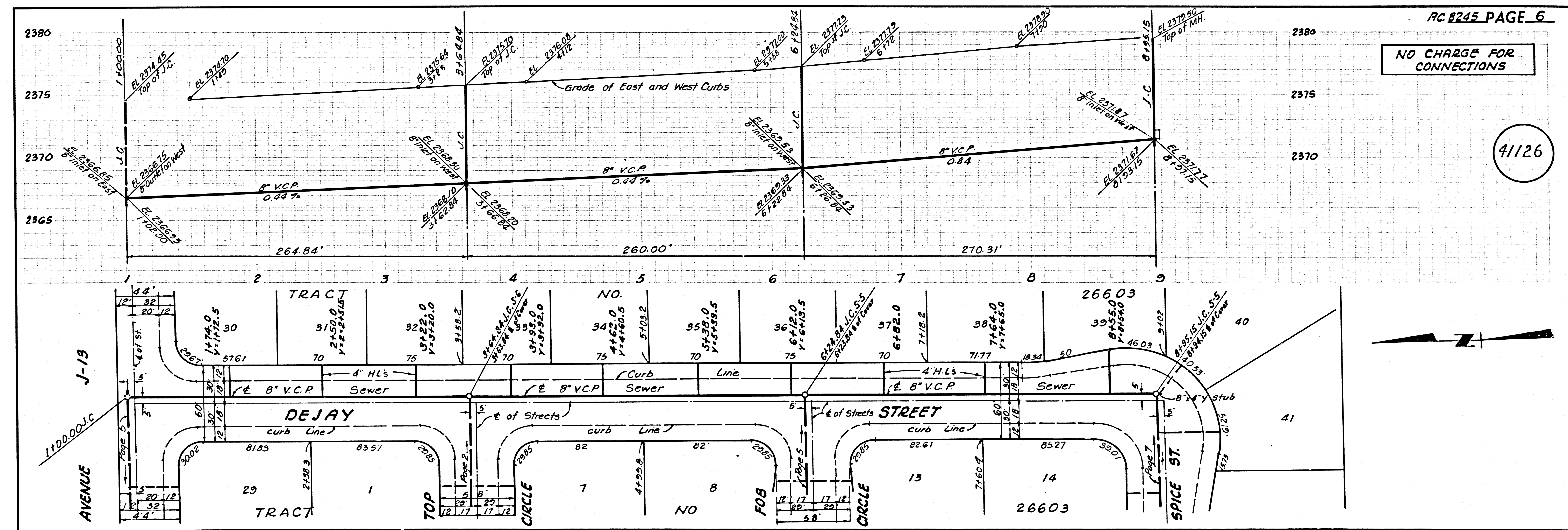
P.C. 8245 PAGE 2
 NO CHARGE FOR CONNECTIONS
 41122

J.N. 0250-02

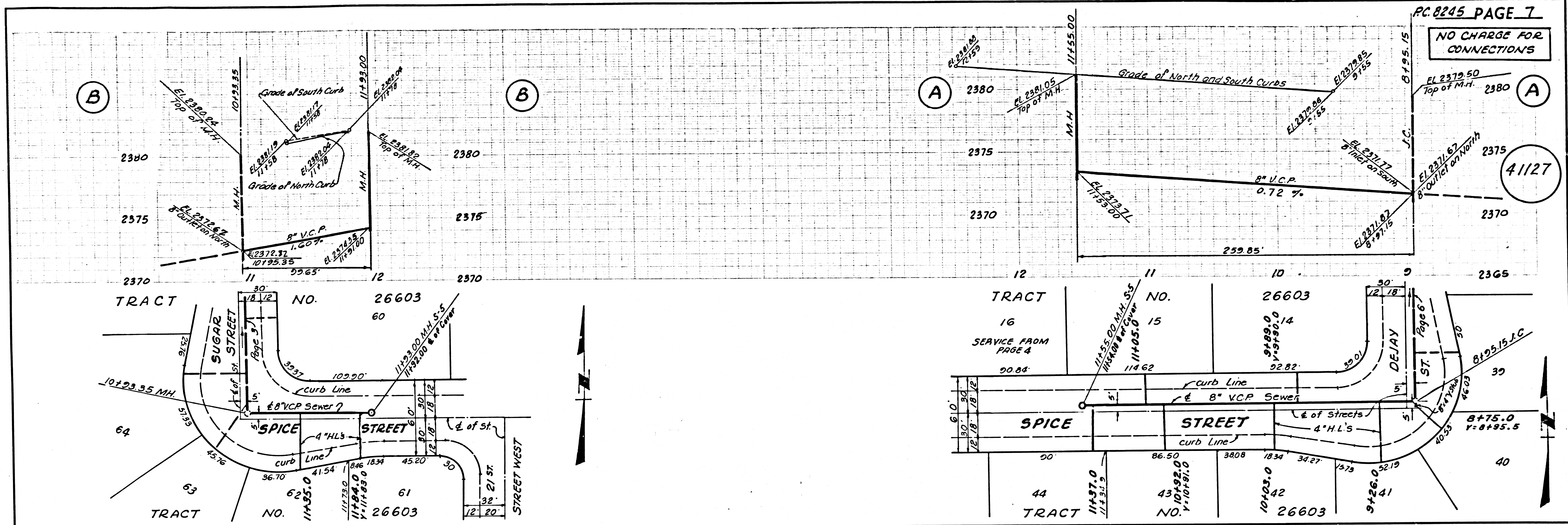
BC 8542



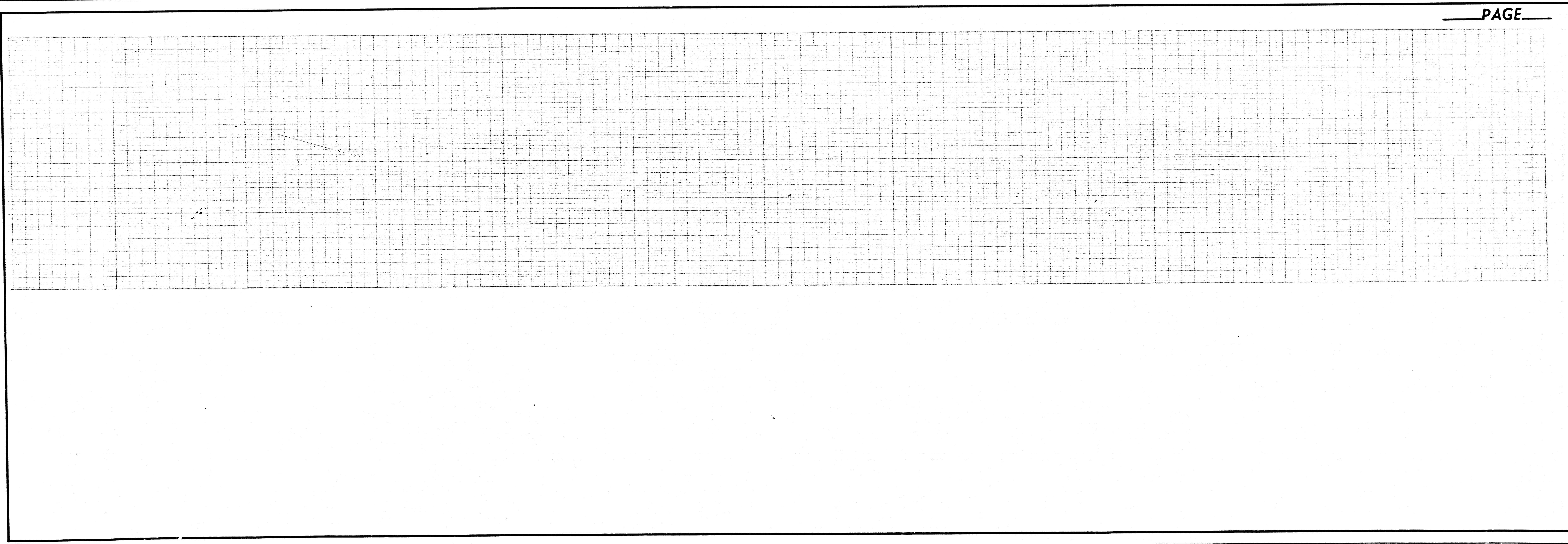
BC 8542



bc 8542



bc 8542



PC 8245 PAGE 7
NO CHARGE FOR CONNECTIONS

41127

PAGE