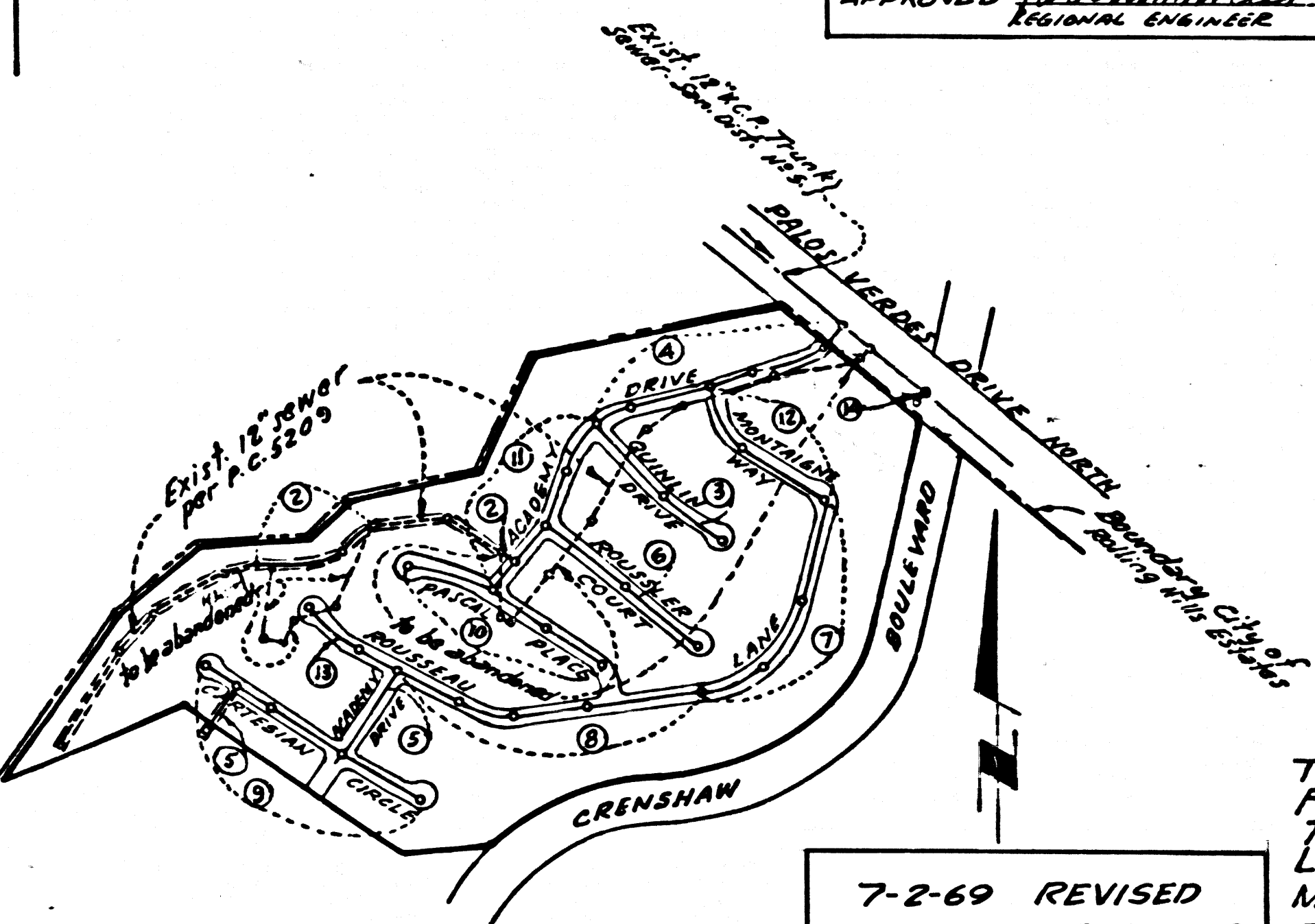


B.M. BY 5971 ELEV. 450.327  
 L + 8" V.C. M.C.R. N.W. COR. PALMS VERDES  
 D + N + ROADWOOD DR. 40 FT. 3 IN. + 30 FT.  
 N 52 IN. N.W. (B.M.)  
 PALM V.R.D.S. QUAD. 19 63

7-30-69 REVISED LOCATION  
 OF TRAP N.W. ON PAGE 4  
 AND LOWERED INVERT.  
 ADDER P.D.'S ON PAGE 11  
*Robert J. Lambie*  
 R.E. 13960  
 APPROVED *Robert J. Lambie*  
 REGIONAL ENGINEER

PARTIAL APPROVAL FOR CONSTRUCTION  
 OF THE FOLLOWING PAGES:  
 PAGE 2 SECTION A & B  
 PAGE 4  
 PAGE 11  
 JOHN A. LAMBIE, COUNTY ENGINEER J.D. PARKHURST  
 CHIEF ENGINEER  
 CO. SAN. DIST. NO. 5  
 Approved By *Robert J. Lambie* Regional Engineer Approved By *J.D. Parkhurst* Chief Engineer

Checked By *Thomas C. Clarke* 7/10/69  
 R.C.E. 10250  
 CITY OF RAINING HILLS ESTABLISHES  
 County Sanitation Districts shall be  
 notified prior to the following so  
 that required inspection can be made  
 (Phone 337-1020 or 636-8097)  
 Commencement of construction of man-  
 holes on District trunk sewer.  
 Breaking into existing manhole on  
 District trunk sewer.  
 Location of the project.



INDEX MAP  
 TRACT NO. 26545  
 P.C. 8246  
 Scale 1" = 400'

7-2-69 REVISED  
 ALIGNMENT PAGE 2  
*Thomas C. Clarke*  
 R.C.E. 9757  
 APPROVED *Thomas C. Clarke*

5-4-69 Revised pipe and  
 backfill - Sta. 0+00 to  
 Sta. 0+87 page 14  
*Thomas C. Clarke*  
 R.C.E. 17332  
 APPROVED *Thomas C. Clarke*

12-2-69 REVISED CURB & SEWER GOS  
 PROPOSED COLLECTED LOTS 173-178  
 ADDED PER 1965 PERMITS PAGE 14  
*Robert J. Lambie*  
 R.C.E. 13960  
 APPROVED *Robert J. Lambie*

THE FOLLOWING LATEST REVISED STANDARD PLANS ON  
 FILE IN THE OFFICE OF THE COUNTY ENGINEER SHALL APPLY IN  
 THE CONSTRUCTION OF THIS PROJECT.  
 Legend  
 Minimum Excavation Safety Requirements 5-1  
 Brick Manhole 5-2  
 Non-Reinforced Precast Concrete Manhole 5-3  
 Reinforced Precast Concrete Manhole 5-4  
 Manhole Frame and Cover 5-5  
 Manhole Step 5-6  
 Bedding for Sewer pipe 5-7  
 Grading and easement 5-15  
 Wye or Tee Support 5-21  
 Allowable trench width 5-23  
 23. ALL JOINTS BETWEEN C.I.P. V.C.P. SHALL BE MADE  
 WITH A RUBBER SLEEVE JOINT TYPE "C" OR "D"  
 (WITH RUSHING IF NECESSARY) PER STD. SPEC. SEC. 208-2  
 24. RE-USE SALVAGED M.H. FRAMES & COVERS

DOUBLE SCALE  
 LOMITA BLDG. DIST. NO. 12

PROFILE, ALIGNMENT AND GRADE OF P.C. 8246  
 SANITARY SEWERS PAGE 1  
 TO BE CONSTRUCTED IN  
 TRACT NO. 26545

PRIVATE CONTRACT NO. 8246  
 W.S. 27  
 7 SHEETS, 11 PAGES  
 SCALE: VERT. 1" = 5' HORIZ. 1" = 40'

PREPARED IN THE OFFICES OF  
 E.L. PEARSON AND ASSOCIATES  
 by *Thomas C. Clarke*  
 Thomas C. Clarke REG. C.E. NO. 9757  
 FOR LEGEND SEE PLAN NO. S-1

- NOTES:
- PROVIDE STAKES ON THE PROPERTY LINE OR PROPERTY LINES PRODUCED AT RIGHT ANGLES TO THE SEWER LINE AT THE CENTER LINE OF EACH MANHOLE.
  - NO REPRESENTATIVE OF THE COUNTY ENGINEER WILL SURVEY OR LAY OUT ANY PORTION OF THE WORK.
  - THE PRIVATE ENGINEER SHALL FURNISH THE COUNTY ENGINEER WITH GRADE SHEETS AND STATIONING FOR ALL HOUSE LATERALS, DE "T" BRANCHES AND SHALL PROVIDE STAKES FOR THEM AT THEIR PROPER LOCATIONS WITH STATIONING PLAINLY MARKED. ALL HOUSE LATERALS SHALL BE CONSTRUCTED AT RIGHT ANGLES FROM THE MAIN LINE SEWER EXCEPT AS SHOWN ON THE PLANS. HOUSE LATERALS FROM CHIMNEYS SHALL NOT HAVE AN ANGLE OF LESS THAN 45° WITH THE MAIN LINE SEWER. ANY CHANGE IN ALIGNMENT SHALL BE REQUESTED IN WRITING BY THE PRIVATE ENGINEER.
  - THE PRIVATE ENGINEER SHALL FURNISH THE HOUSE LATERAL DEPTH AT THE PROPERTY LINE BELOW THE TOP OF CURB ELEVATION FOR EACH HOUSE LATERAL ON THE GRADE SHEET.
  - NO REVISIONS SHALL BE MADE IN THESE PLANS WITHOUT THE APPROVAL OF THE COUNTY ENGINEER.
  - THE CONTRACTOR SHALL NOTIFY THE CONSTRUCTION DIVISION BY TELEPHONE, MADISON 9-4747, EXT. 8161, AT LEAST TWENTY-FOUR HOURS BEFORE STARTING ANY WORK UNDER THIS CONTRACT.
  - MANHOLES SHALL BE BRICK SEWER STRUCTURES PER S-3. OR PRECAST CONCRETE MANHOLES PER S-3 OR S-6
  - SALVAGE ALL M.H. FRAMES & COVERS FOR RE-USE ON JOBS
  - USE STANDARD MANHOLE FRAMES AND COVERS, S-14, EXCEPT AS NOTED.
  - MANHOLE TOPS IN UNIMPROVED RIGHTS-OF-WAY TO BE SIX INCHES ABOVE FINISHED GRADE.
  - USE EXTRA STRENGTH PIPE. ALL PIPE IS STANDARD DEPTH EXCEPT AS NOTED.
  - VITRIFIED CLAY PIPE JOINTS SHALL BE TYPE "D", "F" OR "G" PER STD. SPEC. SECTION 208-2
  - IF A POWER POLE IS WITHIN THREE FEET OF THE SEWER, THE SEWER SHALL BE ENCASED, PER S-8. TWO FEET ON EACH SIDE FROM THE POINT OF INTERFERENCE.
  - IF DURING THE COURSE OF CONSTRUCTION IT IS DETERMINED THAT THERE IS LESS THAN FOUR FEET OF COVER OVER THE TOP OF A MAIN LINE OR HOUSE LATERAL V.C.P. SEWER WHICH IS NOT INDICATED ON THE PLANS, THE PIPE SHALL BE ENCASED PER S-8, UNLESS OTHERWISE APPROVED BY THE CITY ENGINEER.
  - HOUSE LATERALS TO BE CONSTRUCTED WITH RIVETS AT PROPERTY LINE & FEET BELOW CURB GRADE EXCEPT AS NOTED.
  - RESURFACE ALL TRENCHES WITHIN PAVED AREAS TO MEET L.A. COUNTY ROAD DEPT. OR CALIFORNIA STATE HIGHWAY REQUIREMENTS IN ACCORDANCE WITH PERMITS.
  - SEWERS TO BE TESTED FOR LEAKAGE PER SECTION 506-2, 3, 7 STD. SPEC'S.
  - REFER TO SECTION 4-10.4 OF THE STANDARD SPECIFICATIONS REGARDING SAFETY ORDERS.
  - "T" branches may be used in place of "Y" branches except as noted.
  - SPECIAL BACKFILL IN DESIGNATED AREAS:  
 a. Backfill trench & displaced earth removed so as to achieve the natural or finished grades & slopes shown on the grading plan approved for this tract by the building & safety division.  
 b. All backfill & earth replaced shall be compacted to a minimum of 90% density per A.S.T.M. standard method of test D698-57T as modified acceptable certification of such compaction shall be submitted to the construction division.

21. THE CONTRACTOR SHALL RAISE THE FOLLOWING M.H.'S ON R.C. 5209 PER S-3 AND NOTE 10  
 THE 18" & MANHOLES WESTERLY OF M.H. @ STA. 34+65.88 SHOWN ON PAGE 2

22. THE CONTRACTOR SHALL PROTECT THE EXISTING SEWER AND MAINTAIN THAT PORTION TO BE ABANDONED UNTIL SUCH TIME AS THE PROPOSED SEWER IS IN PLACE AND INSPECTED (COND. AT LEFT).

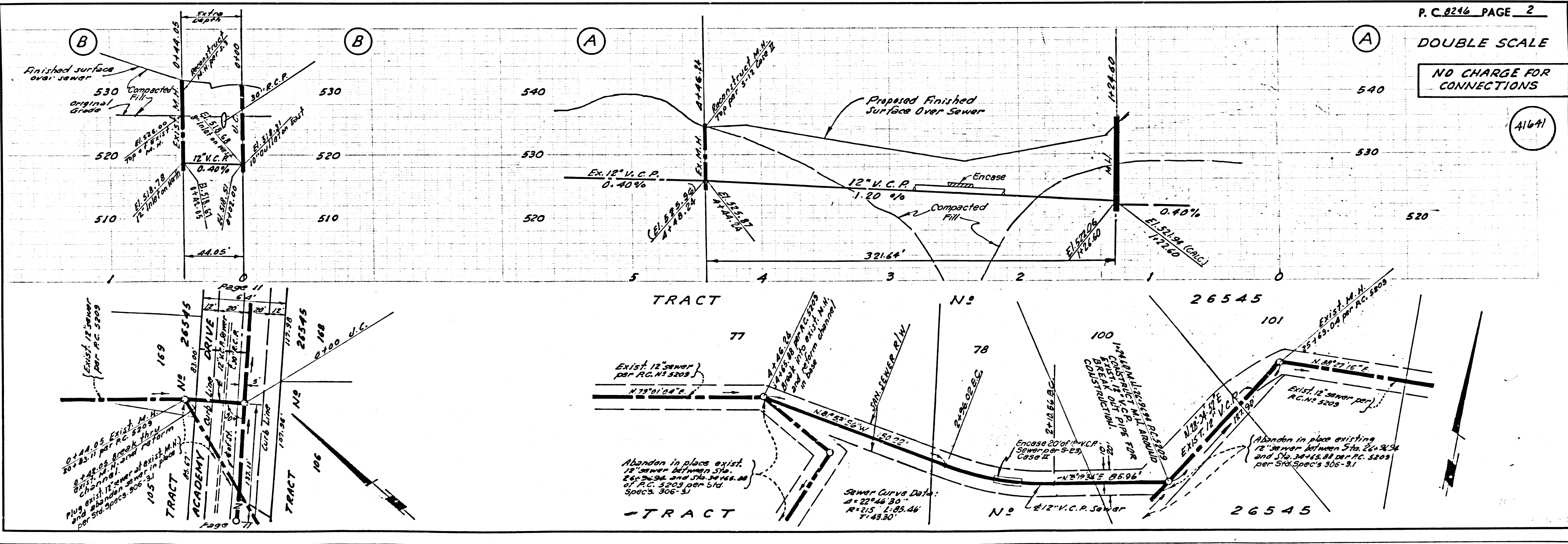
NOTICE TO CONTRACTOR  
 The existence and location of any underground utility pipes or structures shown on these plans are obtained by a search of the available records. To the best of my knowledge there are no existing utilities shown on these plans. The contractor is required to take due precautionary measures to protect the utility lines shown and any other lines not of record or not shown on these plans.  
*Thomas C. Clarke*  
 Thomas C. Clarke REG. C.E. NO. 9757

COLLECT CHARGES  
 AS INDICATED

NOTES:  
 GRADES TO WHICH THIS IMPROVEMENT IS TO BE CONSTRUCTED ARE SHOWN ON PLANS AND PROFILE. GRADE POINTS FOR TOP OF CURB, CENTER LINE OF STREETS, OR CENTER LINE OF ALLEYS ARE SHOWN BY CIRCLES ON PROFILES. AT ALL POINTS BETWEEN DESIGNATED POINTS THE GRADE SHALL BE ESTABLISHED SO AS TO COMFORM TO A STRAIGHT LINE BETWEEN SAID DESIGNATED POINTS. ELEVATIONS ARE IN FEET ABOVE U.S.C. & G.S. SEA LEVEL DATUM OF 1929.  
 THE DRAWINGS AND THE DATA HEREON ARE HEREBY MADE A PART OF THE SPECIFICATIONS.  
 WORK SHALL BE CONSTRUCTED ACCORDING TO STANDARD SPECIFICATIONS FOR PUBLIC WORKS, CONSTRUCTION CITY ENGINEER SPECIAL PROVISIONS DATED JAN. 7, 1965 AND SHALL BE PROTECTED ONLY IN THE PRESENCE OF THE CITY ENGINEER BEFORE WORK CAN BE STARTED. THE CONTRACTOR MUST OBTAIN A PERMIT TO EXCAVATE IN COUNTY STREETS FROM THE L.A. COUNTY ROAD DEPT., DISTRICT OFFICE NO. 2 AND PAY A FEE TO THE CITY ENGINEER, ROOM 300, COUNTY ENGINEERING BUILDING, 100 WEST SECOND STREET OR PALMS VERDES - CANTERBURY VALLEY, REGIONAL OFFICE, SUFFICIENT TO COVER THE COST OF CONSTRUCTION INSPECTION AND RECORD PLANS.  
 APPROVAL OF THIS PLAN BY THE COUNTY OF LOS ANGELES DOES NOT CONSTITUTE A REPRESENTATION AS TO THE ACCURACY OF THE LOCATION OF OR THE EXISTENCE OF UNDERGROUND UTILITY PIPES OR STRUCTURE WITHIN THE LIMITS OF THE PROJECT. THIS NOTE APPLIES TO ALL PAGES.  
 IF WORK IS TO BE DONE IN A STATE HIGHWAY, A PERMIT MUST BE OBTAINED FROM THE STATE OF CALIFORNIA, DIVISION OF HIGHWAYS, 1200 SOUTH SPRING STREET, LOS ANGELES, CALIFORNIA.  
 SEWER WORK CAN BE STARTED. THE CONTRACTOR MUST OBTAIN A PERMIT TO EXCAVATE IN CITY OF RAINING HILLS. CITY ENGINEER'S OFFICE, 100 WEST SECOND STREET, LOS ANGELES, CALIFORNIA.  
 COUNTY OF LOS ANGELES, CALIFORNIA  
 JOHN A. LAMBIE, COUNTY ENGINEER J. D. PARKHURST, CHIEF ENGINEER  
 APPROVED BY *Robert J. Lambie* Regional Engineer APPROVED BY *J.D. Parkhurst* Chief Engineer

CHECKED BY *Thomas C. Clarke* 7/10/69  
 REG. C.E. NO. 10655

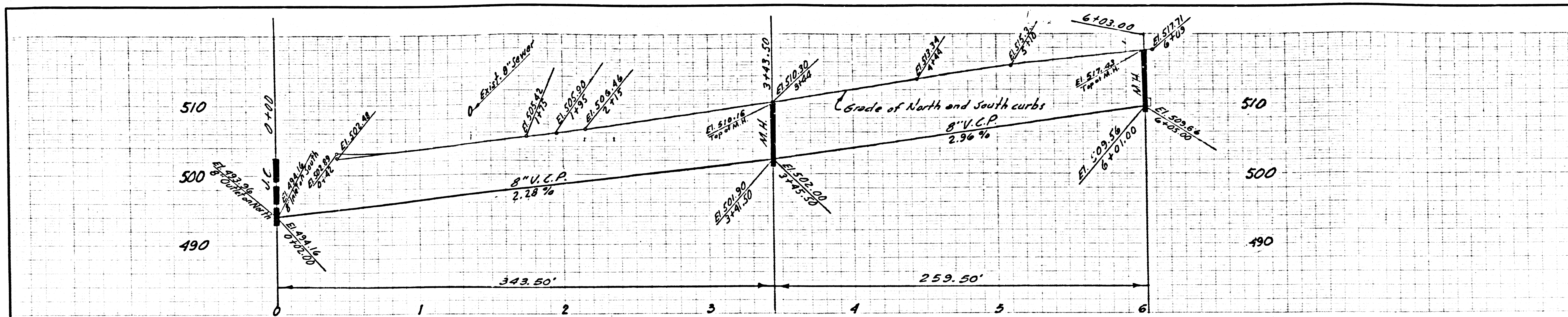
J.N. 0250.02



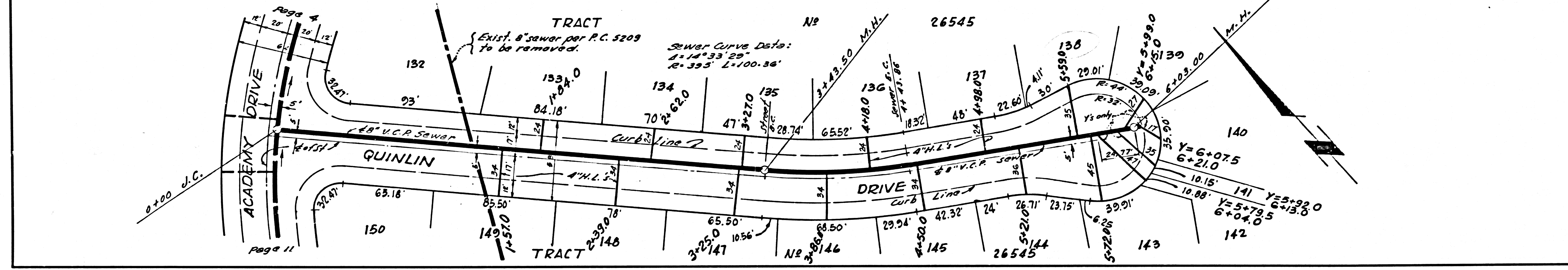
P. C. 8246 PAGE 2  
 DOUBLE SCALE  
 NO CHARGE FOR CONNECTIONS  
 41641



NO CHARGE FOR CONNECTIONS

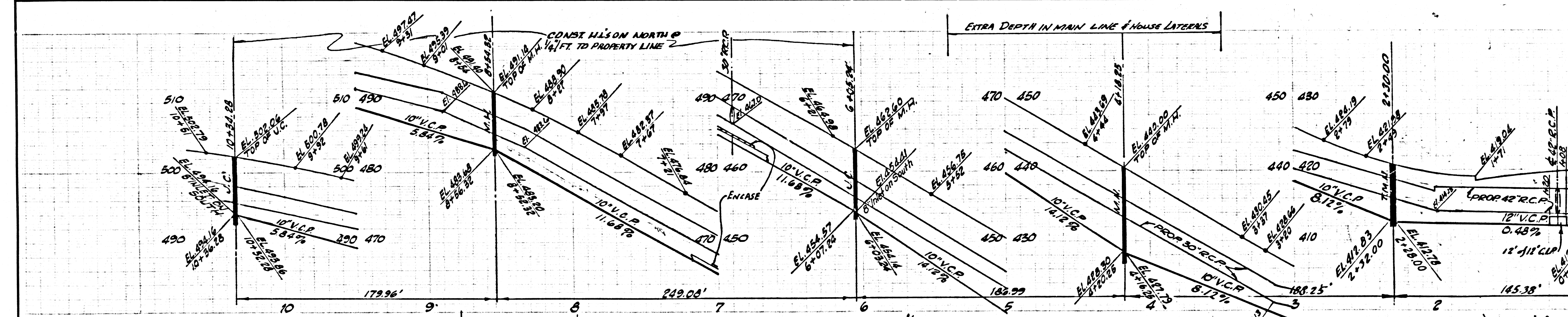


A1642

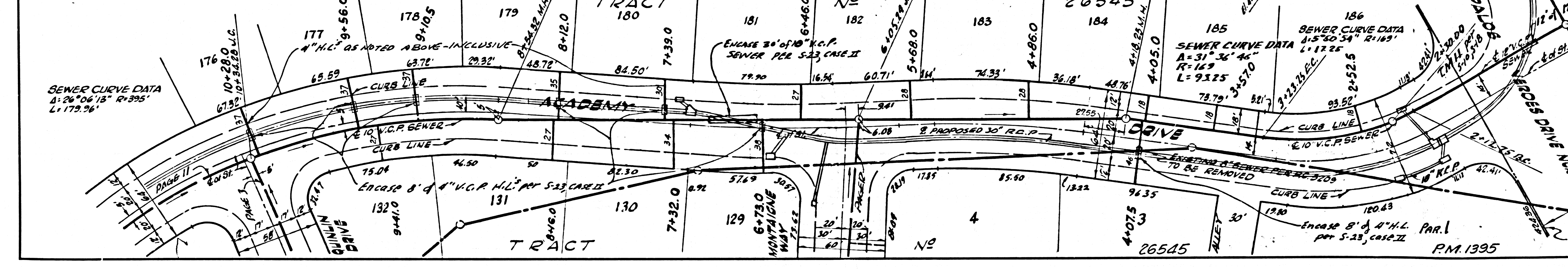


H.C. 522

NO CHARGE FOR CONNECTIONS

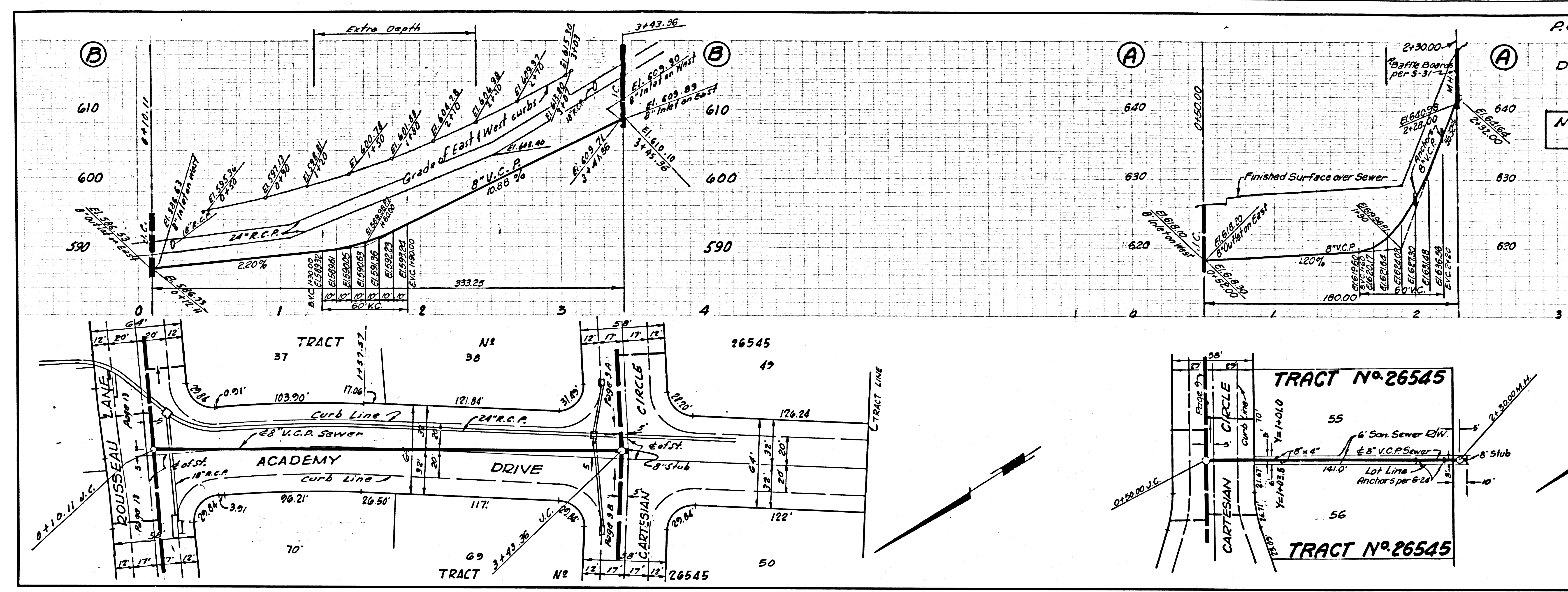


A1643



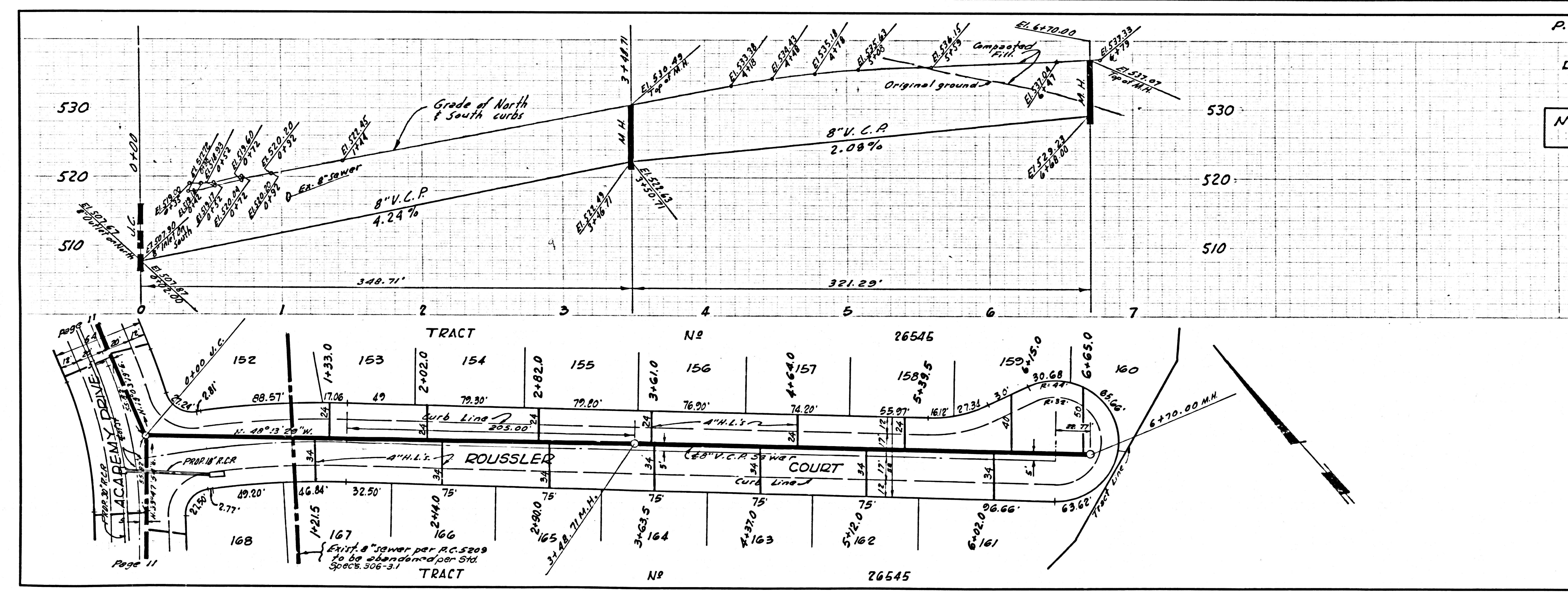
P.M. 1395





P.C. 8246 PAGE 5  
 DOUBLE SCALE  
 NO CHARGE FOR CONNECTIONS

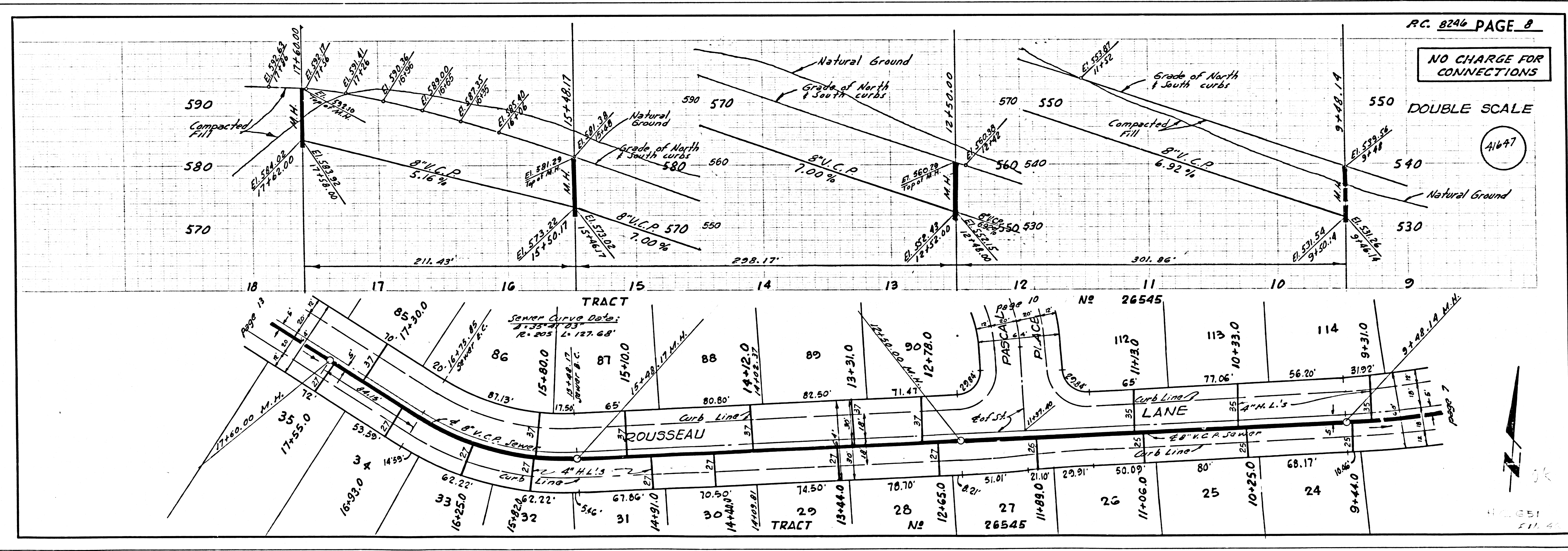
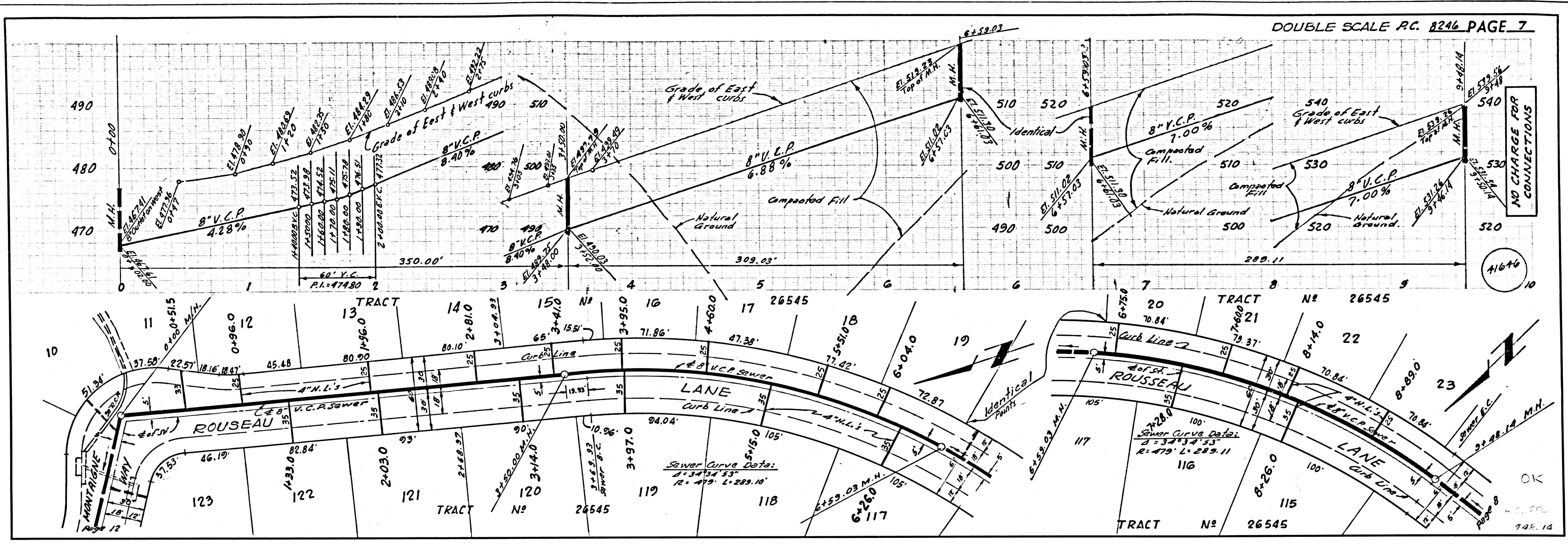
41644



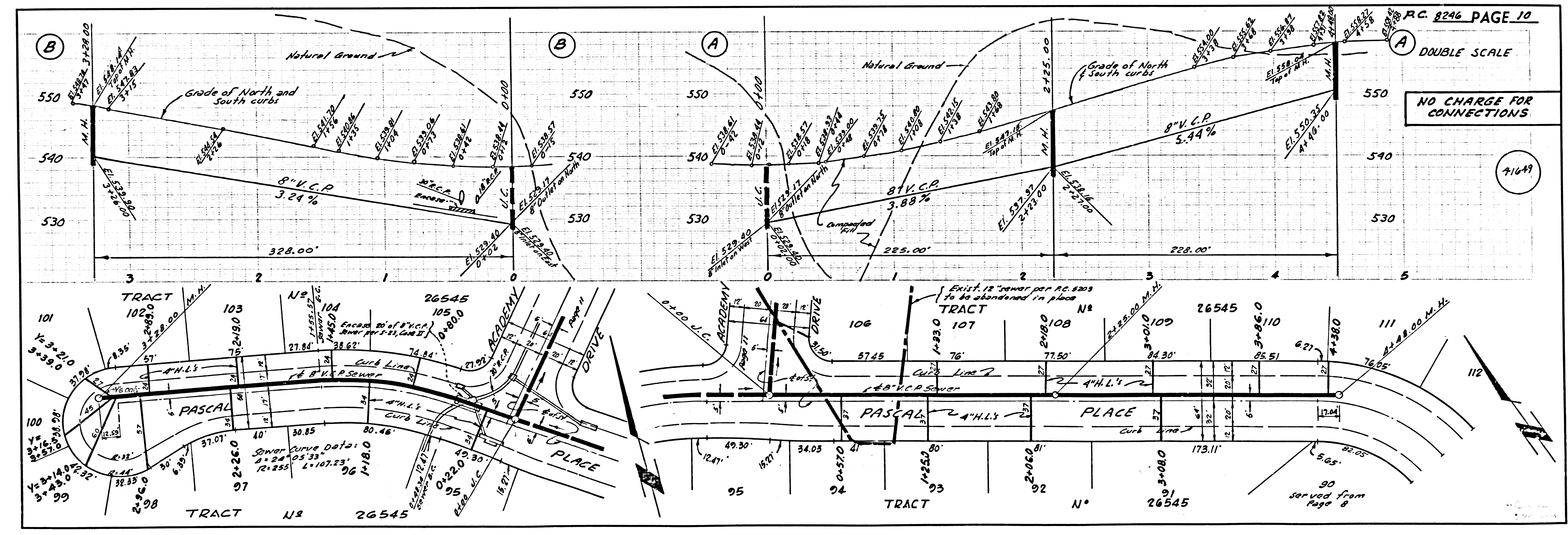
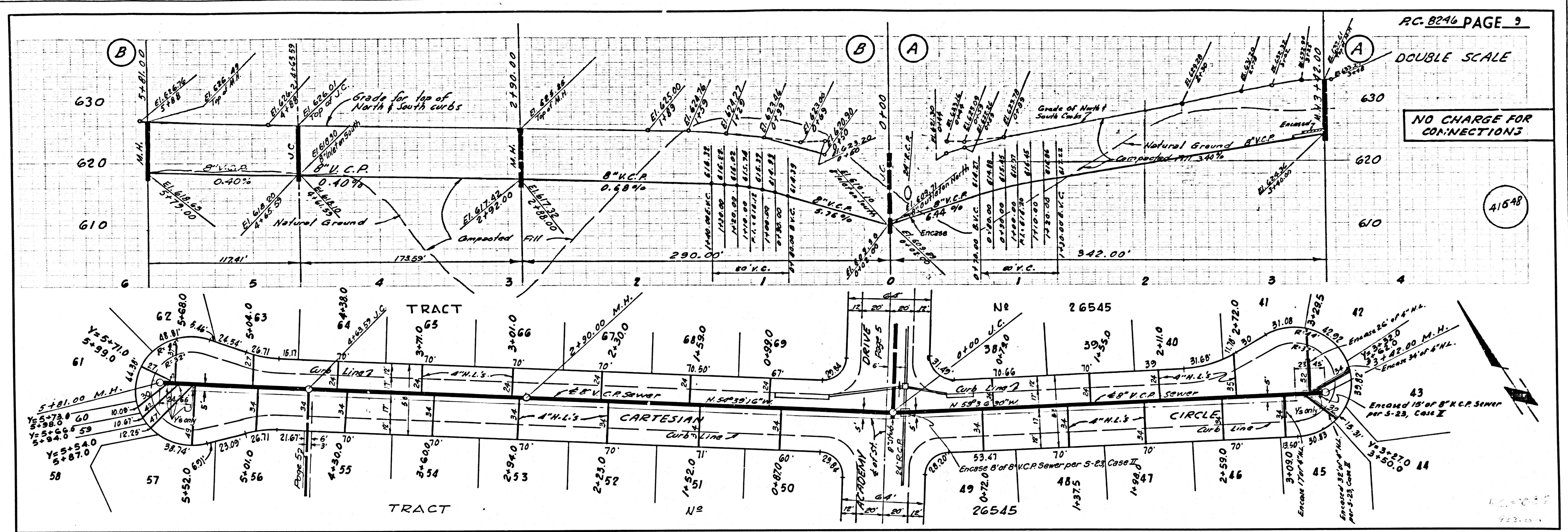
P.C. 8246 PAGE 6  
 DOUBLE SCALE  
 NO CHARGE FOR CONNECTIONS

41645









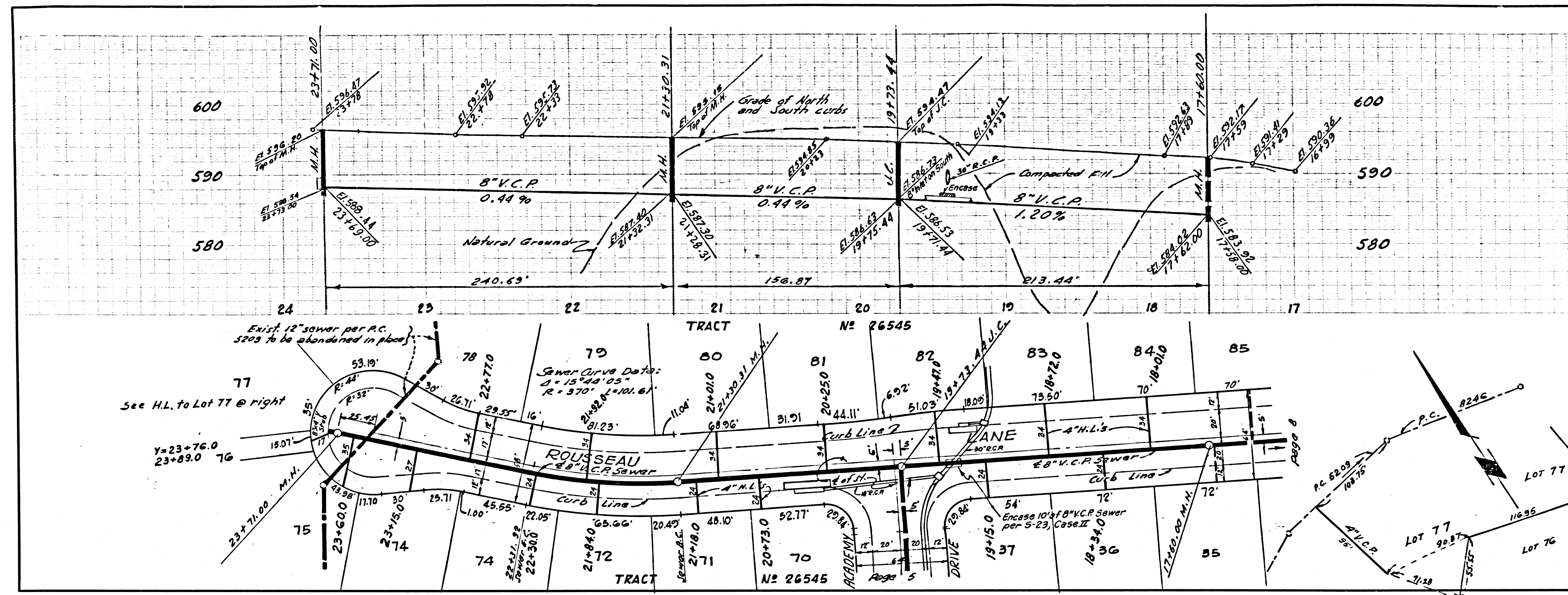






DOUBLE SCALE

NO CHARGE FOR CONNECTIONS

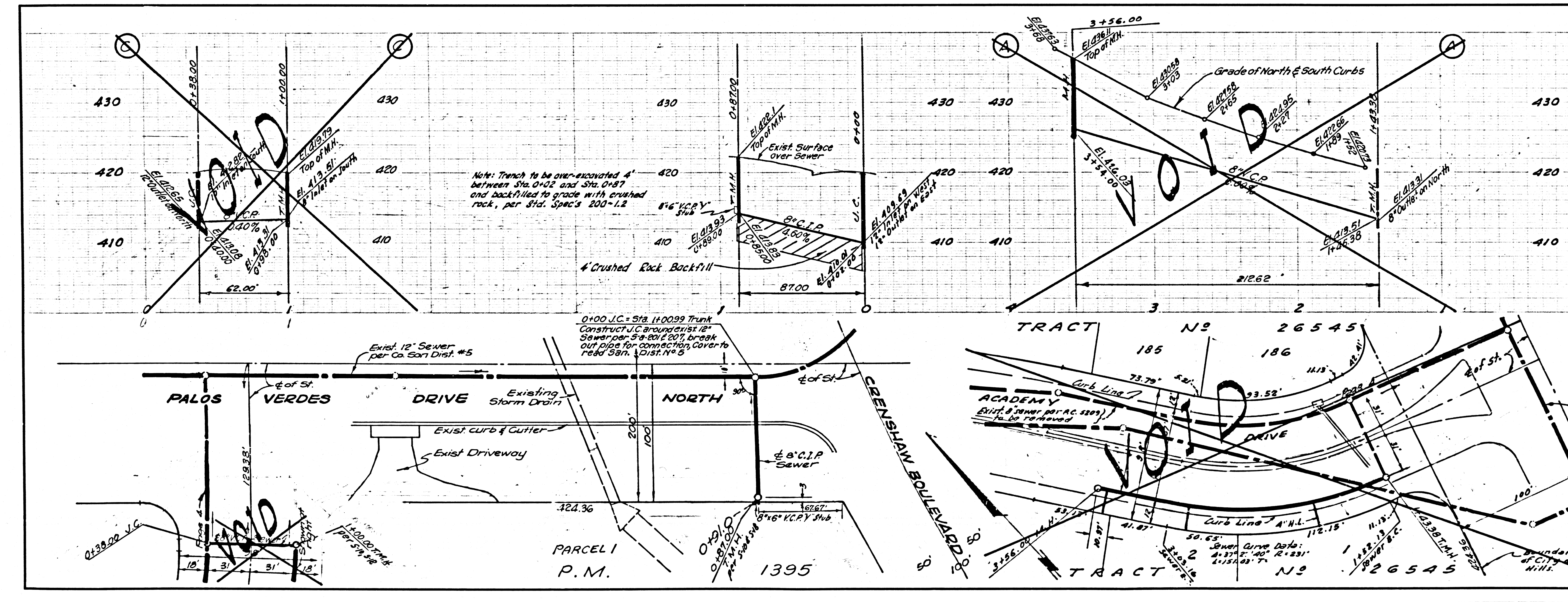


41652

SCALE: 1"=60' C. 11.00

DOUBLE SCALE

NO CHARGE FOR CONNECTIONS



41653