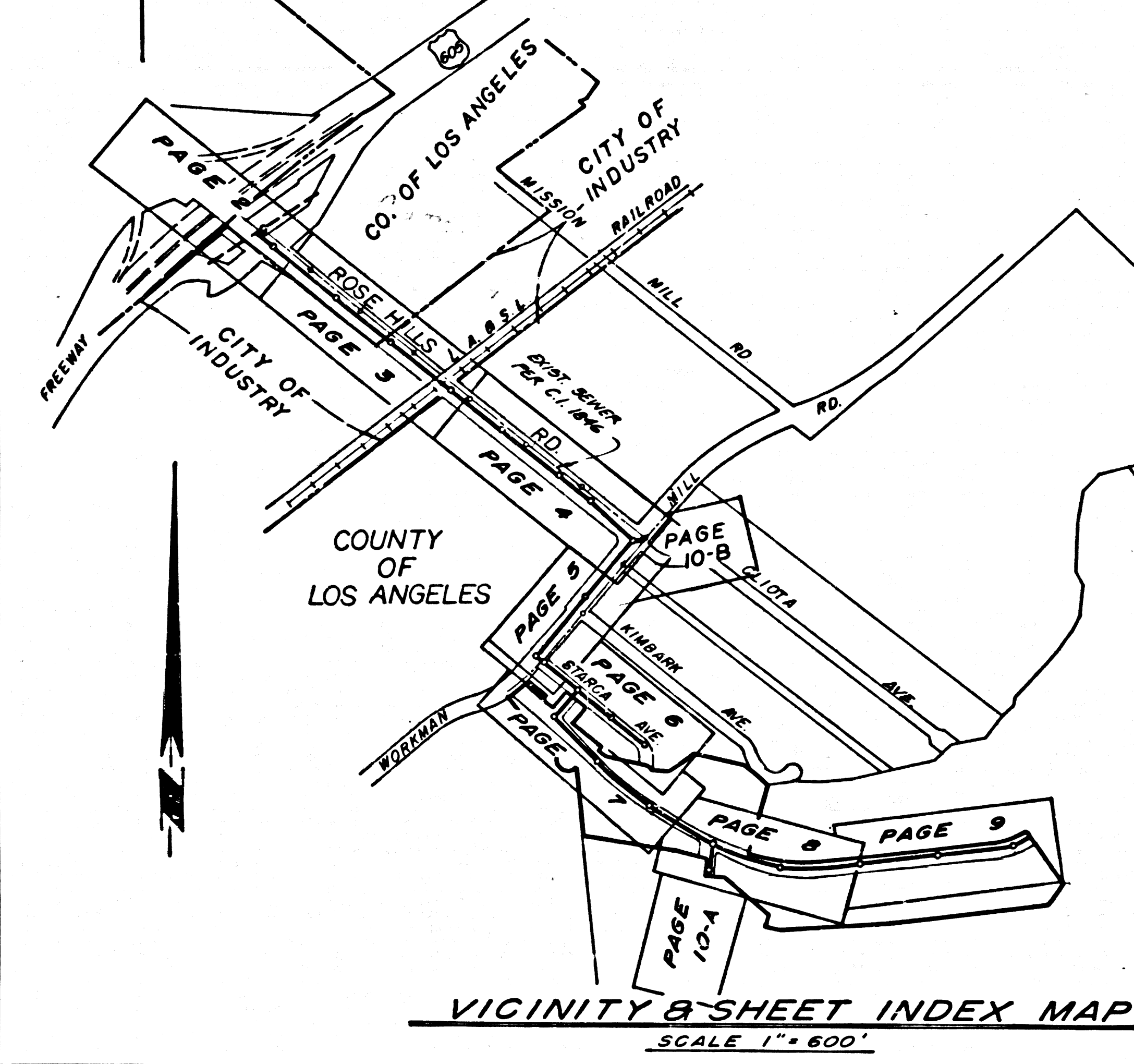


B.M. BY 6638 ELEV. 225.632
 Foot Spt. & Lead 2.4' N/E End of
 Conc. Headwall of Drain @ Sta.
 100+30 0.16 Miles S.W. to Rose Hills Rd.
 57 Wly Side of Workman Hill Rd.
 WHITTIER QUAD. 1965 ADJ.



REVISION: **A** DATE: OCT. 17, 1969
 CHANGED MAIN LINE SEWER LOCATION FROM A
 CURVED LINE TO A STRAIGHT RUN. REVISION
 SHOWN ON PAGE 2, FROM STATION 50+18.39
 TO STATION 50+55.70

APPROVED BY: *Quill E. McCollin* 10/20/69
 OFFICE OF COUNTY ENGINEER (R.C.E. NO.) 15931

REVISION: **B** DATE: NOV. 22, 1969
 REVISED HOUSE LATERAL LOCATIONS ON LOTS 8, 9, 10, 11, 12
 FROM JUNCTION CHAMBER @ STATION 44+58.40 TO MANHOLE
 @ STATION 50+55.70 DUE TO CHANGE OF TRAIL STREET GRADE.
 WALLS CHANGED IN SOME PLACES. FACTORY MANHOLES TO LOTS
 8, 9, 10, 11, 12.

APPROVED BY: *Quill E. McCollin* 11/22/69
 OFFICE OF COUNTY ENGINEER (R.C.E. NO.) 15931

REVISION: **C** DATE: APRIL 14, 1970
 CHANGED MAIN LINE SEWER LOCATION FROM A
 CURVED LINE TO A STRAIGHT RUN. REVISION
 SHOWN ON PAGE 2, FROM STATION 50+18.39
 TO STATION 50+55.70 DUE TO CHANGE OF TRAIL STREET GRADE.
 WALLS CHANGED IN SOME PLACES. FACTORY MANHOLES TO LOTS
 8, 9, 10, 11, 12.

APPROVED BY: *Quill E. McCollin* 4/14/70
 OFFICE OF COUNTY ENGINEER (R.C.E. NO.) 15931

LOS ANGELES COUNTY SAN. DIST. DATE: 5-5-70
 APPROVED BY: *L. Condures*

NOTES: (CONT.)

19. PRIOR TO THE START OF CONSTRUCTION, FIELD ELEV. SHALL BE CERTIFIED THAT THIS SEWER, AS INDICATED ON PAGE 2, CROSSING UNDER THE STORM DRAIN NO. (STA. 13+00.00) CAN BE CONSTRUCTED AS SHOWN ON THESE PLANS WITH THE CUT SHEETS.

20. DURING THE COURSE OF CONSTRUCTION, IT IS FOUND THAT WATER LINES ARE CLOSER TO THE SEWER THAN SHOWN ON THESE PLANS OR CONSTRUCTION WILL BE ALLOWED UNTIL APPROVED BY THE COUNTY ENGINEER.

21. NO PROVISIONAL HOUSE CONNECTION PERMITS SHALL BE ISSUED UNTIL THIS PRIVATE CONTRACT HAS BEEN ACCEPTED FOR PUBLIC USE BY THE CONSTRUCTION DIVISION OF THE COUNTY ENGINEER AND CITY OF INDUSTRY PRIVATE CONTRACT NO. 8251 HAS BEEN ACCEPTED FOR PUBLIC USE BY THE CITY OF INDUSTRY.

County Sanitation Districts shall be notified prior to the following so that required inspection can be made (Phone 629-1069 at a call-center)

Once Building District trunk sewer. Acceptance of the project.

No connections for the disposal of industrial waste shall be made to sewer shown on these drawings without written permission from the Chief Engineer and General Manager of the County Sanitation Districts.

NOTICE TO CONTRACTOR

THE EXISTENCE AND LOCATION OF ANY UNDERGROUND UTILITY PIPES OR STRUCTURES SHOWN ON THESE PLANS ARE OBTAINED BY A SEARCH OF THE AVAILABLE RECORDS TO THE BEST OF MY KNOWLEDGE. THERE ARE NO EXISTING UTILITIES EXCEPT AS SHOWN ON THESE PLANS.

THE CONTRACTOR IS REQUIRED TO TAKE DUE PRECAUTIONARY MEASURES TO PROTECT THE UTILITY LINES SHOWN AND ANY OTHER LINES NOT OF RECORD OR NOT SHOWN ON THESE PLANS.

Quill E. McCollin
 R.C.E. 12588

COLLECT CHARGES AS INDICATED

WHITTIER BLDG. DIST. NO. 11

- NOTES:
- HOUSE LATERALS TO BE CONSTRUCTED WITH PROPERTY LINE 4 FEET BELOW CURB GRADE EXCEPT AS NOTED.
 - PROVIDE STAKES ON THE PROPERTY LINE OR PROPERTY LINES PRODUCED AT RIGHT ANGLES TO THE SEWER LINE AT THE CENTER LINE OF EACH MANHOLE.
 - NO REPRESENTATIVE OF THE COUNTY ENGINEER WILL SURVEY OR LAY OUT ANY PORTION OF THE WORK.
 - THE PRIVATE ENGINEER SHALL FURNISH THE COUNTY ENGINEER WITH GRADE SHEETS AND STATIONING FOR ALL HOUSE LATERALS AND "Y" OR "T" BRANCHES AND SHALL PROVIDE STAKES FOR THEM AT THEIR PROPER LOCATIONS WITH STATIONING PLAINLY MARKED. ALL HOUSE LATERALS SHALL BE CONSTRUCTED IN A STRAIGHT ALIGNMENT AT RIGHT ANGLES FROM THE MAIN LINE SEWER EXCEPT AS SHOWN ON THE PLANS. HOUSE LATERALS FROM CHIMNEYS SHALL NOT HAVE AN ANGLE OF LESS THAN 45° WITH THE MAIN LINE SEWER. ANY CHANGE IN ALIGNMENT SHALL BE REQUESTED IN WRITING BY THE PRIVATE ENGINEER.
 - THE PRIVATE ENGINEER SHALL FURNISH THE HOUSE LATERAL DEPTH AT THE PROPERTY LINE BELOW THE TOP OF CURB GRADE FOR EACH HOUSE LATERAL ON THE GRADE SHEET.
 - NO REVISIONS SHALL BE MADE IN THESE PLANS WITHOUT THE APPROVAL OF THE COUNTY ENGINEER.
 - THE CONTRACTOR SHALL NOTIFY THE CONSTRUCTION DIVISION BY TELEPHONE, MARSHAL 9-4747, EXT. 5151, AT LEAST TWENTY-FOUR HOURS BEFORE STARTING ANY WORK UNDER THIS CONTRACT.
 - ALL STRUCTURES SHALL BE BUILT FOR CONNECTIONS TO MAINLINE SEWERS EXCEPT AS NOTED.
 - MANHOLE TOPS IN UNIMPROVED RIGHTS OF WAY TO BE SIX INCHES ABOVE FINISHED GRADE.
 - USE STEEL STRENGTH PIPE. ALL PIPE IS STANDARD DEPTH EXCEPT AS NOTED.
 - VERTICAL CLAY PIPE JOINTS SHALL BE TYPE "T", OR "Q" PER STANDARD SPECIFICATIONS SECTION 300.2.
 - IF A POWER POLE IS WITHIN THREE FEET OF THE SEWER, THE SEWER SHALL BE ENCASED, PER S-22, TWO FEET ON EACH SIDE FROM THE POINT OF INTERFERENCE.
 - IF DURING THE COURSE OF CONSTRUCTION IT IS DETERMINED THAT THERE IS LESS THAN FOUR FEET OF COVER OVER THE TOP OF A MAIN LINE OR HOUSE LATERAL V.C.P. SEWER WHICH IS NOT INDICATED ON THE PLANS, THE PIPE SHALL BE ENCASED PER S-22, UNLESS OTHERWISE APPROVED BY THE COUNTY ENGINEER.
 - RESURFACE ALL TRENCHES WITHIN PAVED AREAS TO MEET L.A. COUNTY ROAD DEPT. OR CALIFORNIA STATE HIGHWAY REQUIREMENTS IN ACCORDANCE WITH PERMITS.
 - SEWERS TO BE TESTED FOR LEAKAGE PER SECTION 300.2.5.7 OF THE STANDARD SPECIFICATIONS.
 - REFER TO SECTION 7.18.1.1 OF THE STANDARD SPECIFICATIONS, REGARDING SANITARY ODORS.
 - ALL JOINTS BETWEEN CAST IRON PIPE AND VITRIFIED CLAY PIPE SHALL BE MADE WITH A RUBBER SLEEVE JOINT, TYPE "C" OR "D", (SEE LEFT).
 - THE FOLLOWING LATEST REVISED STANDARD PLANS ON FILE IN THE OFFICE OF THE COUNTY ENGINEER SHALL APPLY IN THE CONSTRUCTION OF THIS PROJECT.

| | |
|---|------|
| GENERAL PUBLIC SANITY REQUIREMENTS | S-1 |
| BRICK MANHOLE | S-2 |
| NON-REINFORCED PRECAST CONCRETE MANHOLE | S-3 |
| REINFORCED PRECAST CONCRETE MANHOLE | S-4 |
| MANHOLE FRAME AND COVER | S-5 |
| STANDARD MANHOLE TRIP | S-17 |
| BRIDGING FOR SEWER PIPE | S-21 |
| CRACKING AND ENCASEMENT | S-23 |
| WYE OR TE SUPPORT | S-24 |
| ADJUSTABLE TRENCH WYTHE | S-25 |
| TRAP M.H. BASE | S-10 |
| TRAP M.H. CASTING | S-18 |
| SPECIAL HOUSE LATERALS | S-25 |

CITY OF INDUSTRY
 APPROVED FOR OUTLET PURPOSES (I.P.C. 145)
 BY: *E.J. Epperson* 7/16/69
 E.J. EPPERSON CITY ENG. DATE

CITY OF INDUSTRY
 APPROVED PLANS PER REV. C THIS SHEET
 APPROVED FOR OUTLET PURPOSE (I.P.C. 145)
 BY: *E.J. Epperson* 4/30/70
 E.J. EPPERSON CITY ENG. DATE

PROFILE, ALIGNMENT AND GRADE OF
 SANITARY SEWERS P.C. 8251
 TO BE CONSTRUCTED IN PAGE 1
 TRACT NO 30700

PRIVATE CONTRACT NO. 8251
 W.S. 37
 5 SHEETS; 10 PAGES
 SCALE: VERT. 1" = 4'
 HORIZ. 1" = 40'
 APRIL 19, 1969
 PREPARED IN THE OFFICES OF
 WILLARD ENGINEERING ASSOCIATES
 ANAHEIM, CALIFORNIA
 BY: *Don W. Noel*
 REG. C. E. NO. 12508

NOTE:
 GRADES TO WHICH THIS IMPROVEMENT IS TO BE CONSTRUCTED ARE SHOWN ON PLANS AND PROFILES. GRADE POINTS FOR TOP OF CURB, CENTER LINE OF STREETS, OR CENTER LINE OF ALLEYS ARE SHOWN BY CIRCLES ON PROFILES. ALL POINTS BETWEEN DESIGNATED POINTS THE GRADE SHALL BE ESTABLISHED SO AS TO CONFORM TO A STRAIGHT LINE DRAWN BETWEEN SAID DESIGNATED POINTS. ELEVATIONS ARE IN FEET ABOVE U.S.C. & G.S. SEA LEVEL DATUM OF 1929.

WORK SHALL BE CONSTRUCTED ACCORDING TO THE STANDARD SPECIFICATIONS FOR PUBLIC WORKS CONSTRUCTION AND SPECIAL PROVISIONS FOR THE CONSTRUCTION OF SANITARY SEWERS DATED JAN. 2, 1968, AS REVISED, AND SHALL BE SUPERVISED BY THE PRESENCE OF THE COUNTY ENGINEER.

BEFORE WORK CAN BE STARTED, THE CONTRACTOR MUST OBTAIN A PERMIT TO EXCAVATE IN COUNTY STREETS FROM THE L.A. COUNTY ROAD DEPT., DISTRICT OFFICE NO. 1, 120 SOUTH SPRING STREET, LOS ANGELES, CALIFORNIA. REGIONAL OFFICE, SUPPLEMENT TO COVER THE COST OF CONSTRUCTION INSPECTION AND RECORD PLANS.

APPROVAL OF THIS PLAN BY THE COUNTY OF LOS ANGELES DOES NOT CONSTITUTE A REPRESENTATION AS TO THE ACCURACY OF THE LOCATION OF OR THE EXISTENCE OR NON-EXISTENCE OF ANY UNDERGROUND UTILITY PIPE, OR STRUCTURE WITHIN THE LIMITS OF THIS PROJECT. THIS NOTE APPLIES TO ALL PAGES.

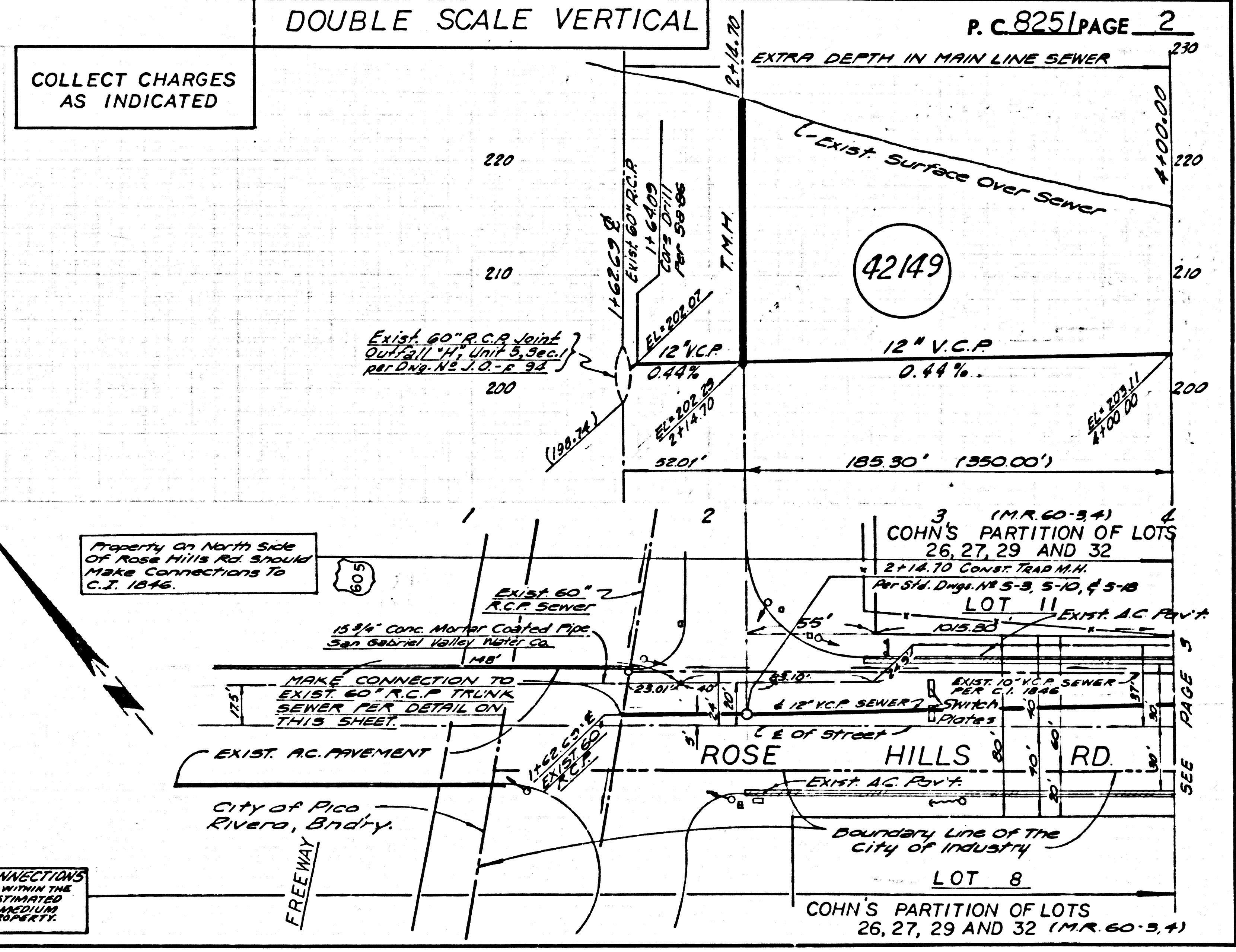
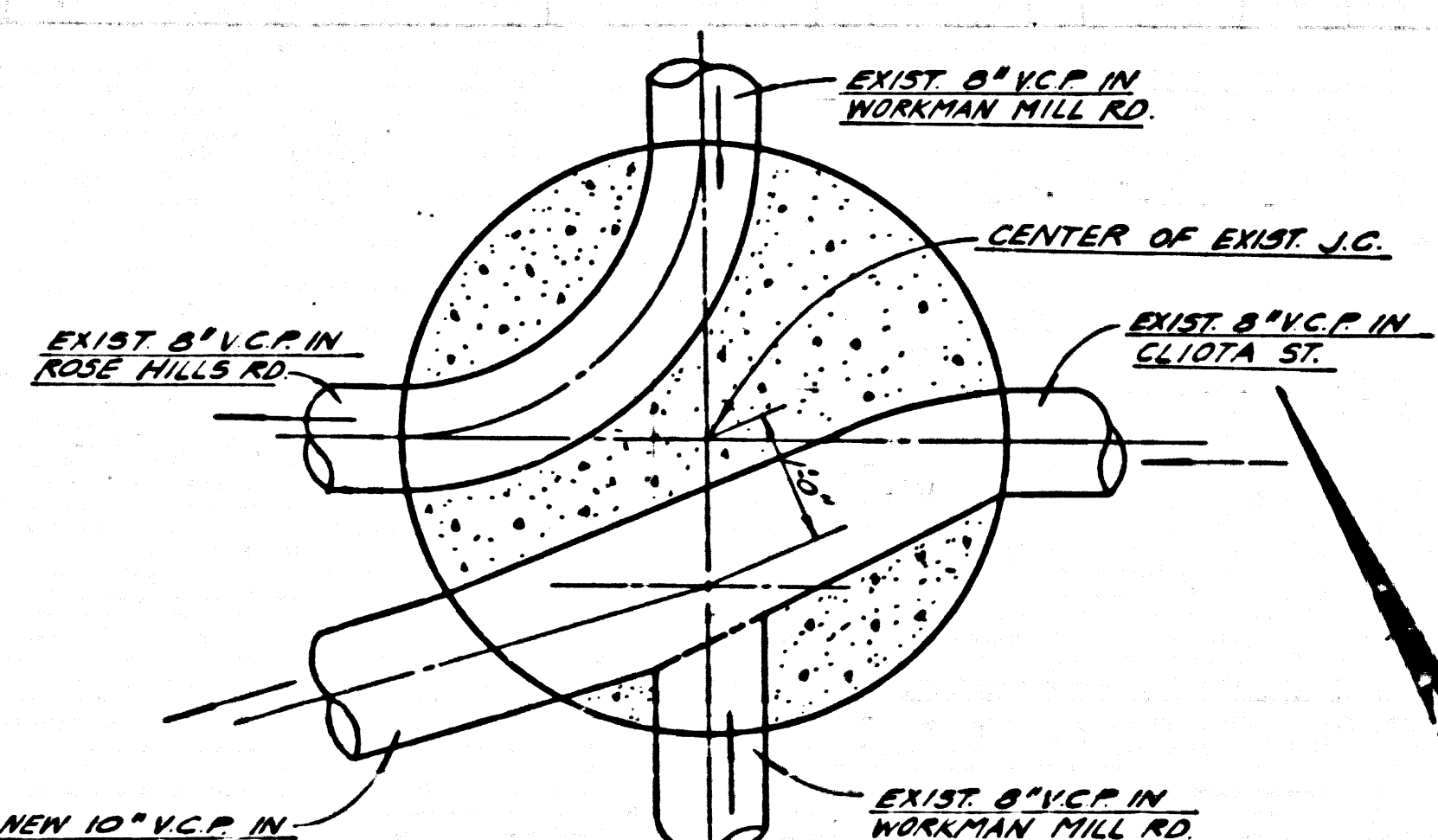
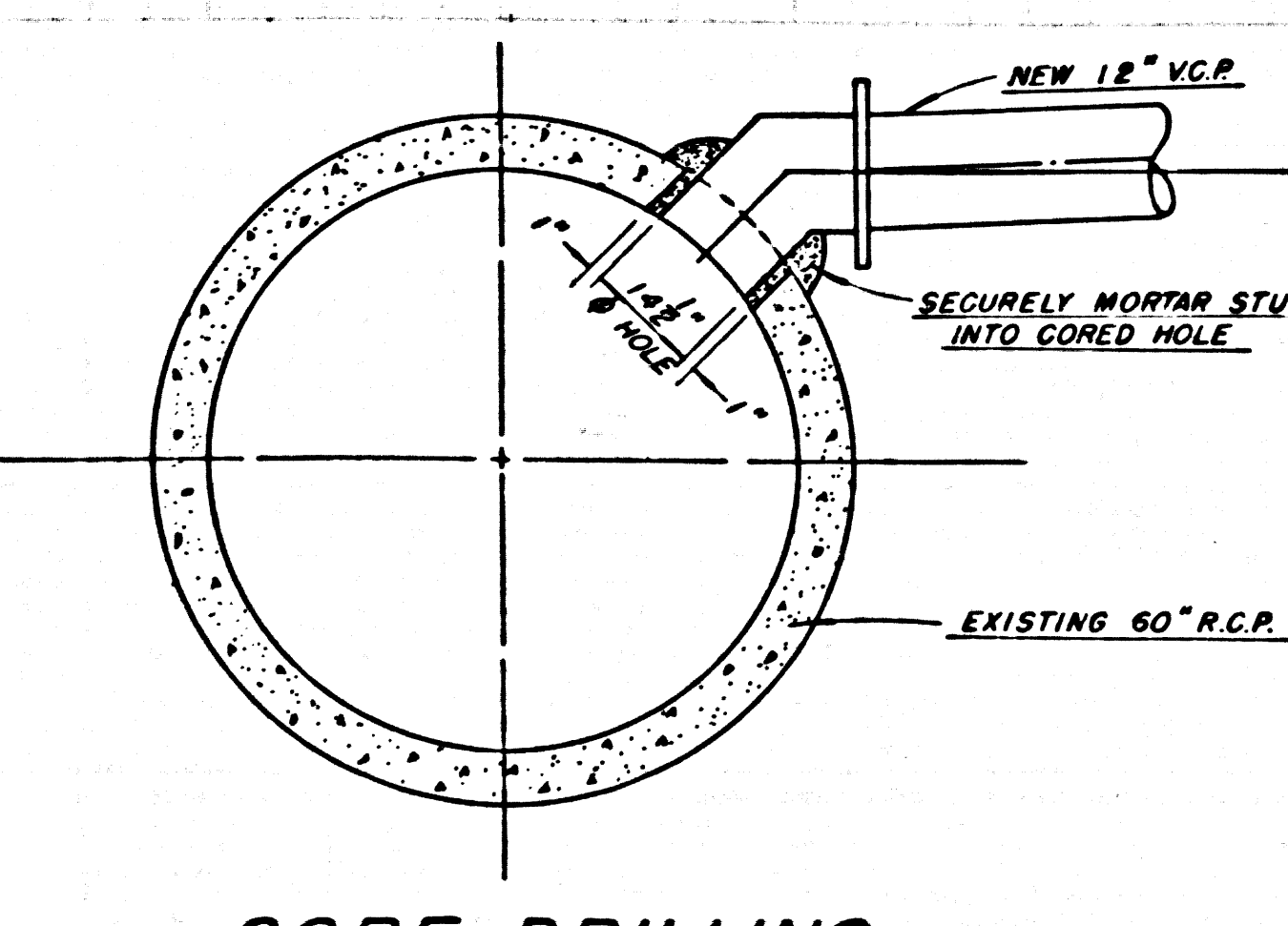
IF WORK IS TO BE DONE IN A STATE HIGHWAY, A PERMIT MUST BE OBTAINED FROM THE STATE OF CALIFORNIA, DIVISION OF HIGHWAYS, 120 SOUTH SPRING STREET, LOS ANGELES, CALIFORNIA.

COUNTY OF LOS ANGELES, CALIFORNIA
 JOHN A. LAMBLE, COUNTY ENGINEER J. D. PARKHURST, CHIEF ENGINEER
 CO. SAN. DIST. NO. 11
 APPROVED BY: *Quill E. McCollin* 7/16/69 APPROVED BY: *J. D. Parkhurst*
 LOS ANGELES, CALIFORNIA DATE OFFICE ENGINEER
 CHECKED BY: *Quill E. McCollin* 7/16/69
 REG. C.E. NO. 15931 DATE

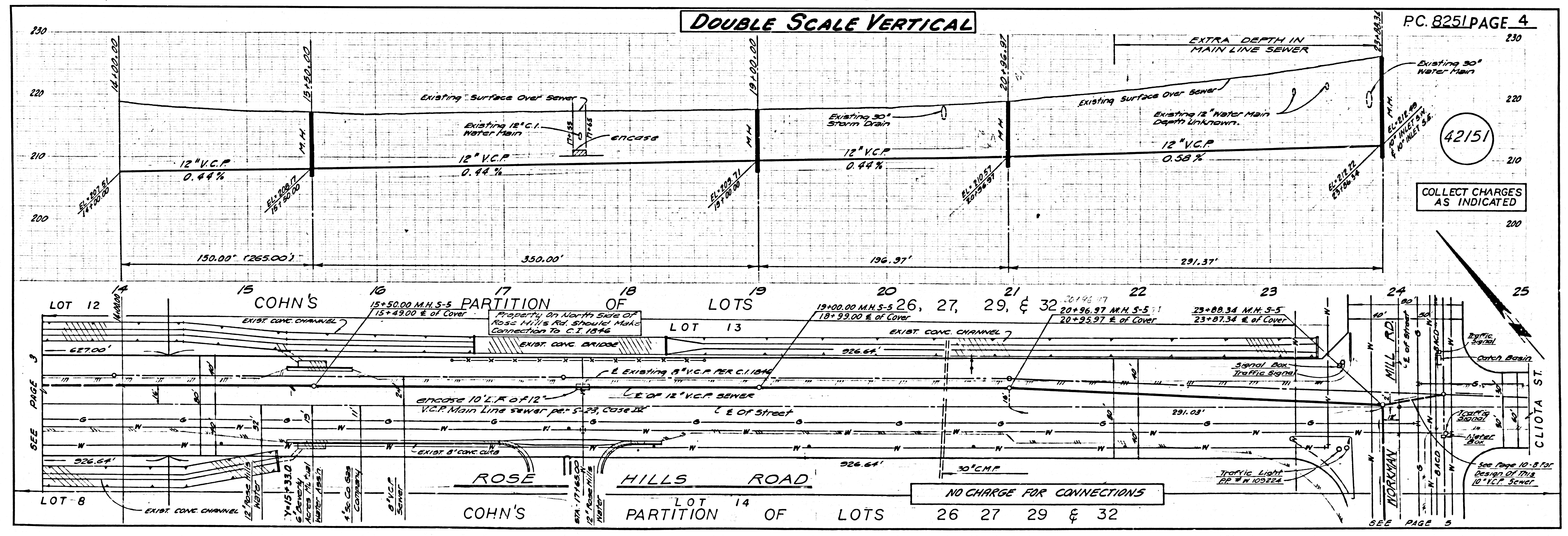
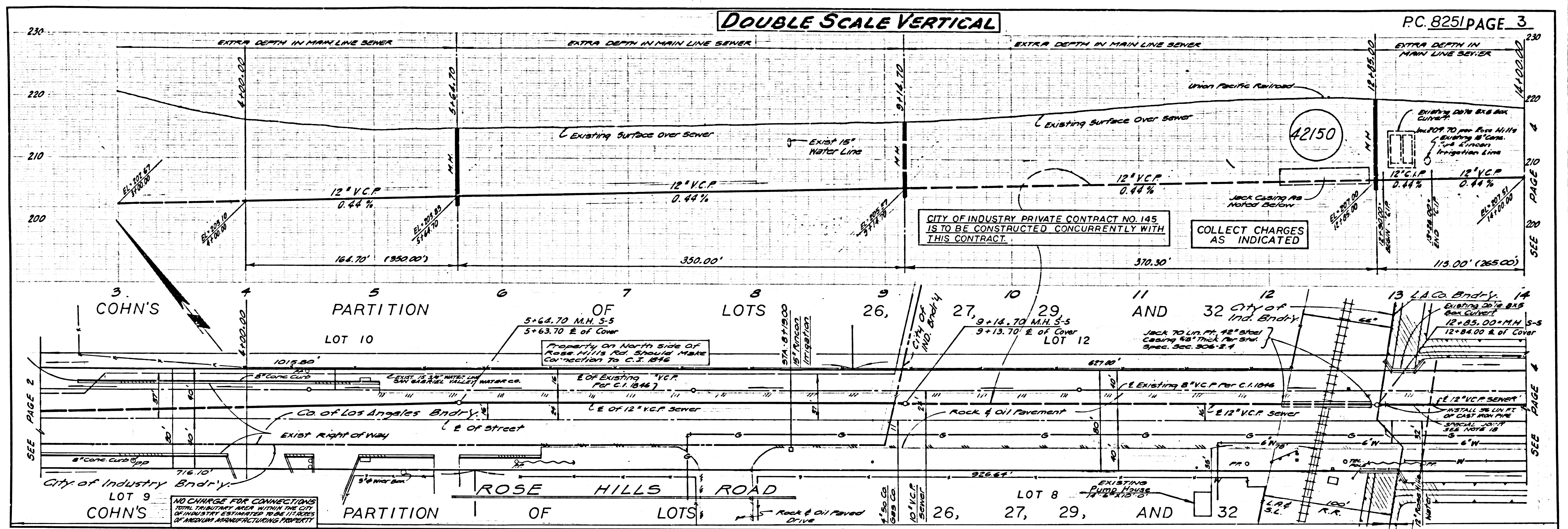
42148

REVISION: **D** DATE: AUG. 13, 1970
 CHANGED MAIN LINE SEWER ALIGNMENT FROM STA. 1+52.63
 TO STA. 1+51.45 TO CLEARANCE OF 3.54' UNDER
 LINE FROM STA. 1+70 TO STA. 1+70.

APPROVED BY: *Quill E. McCollin* 8/24/70
 OFFICE OF COUNTY ENGINEER (R.C.E. NO.) 15931

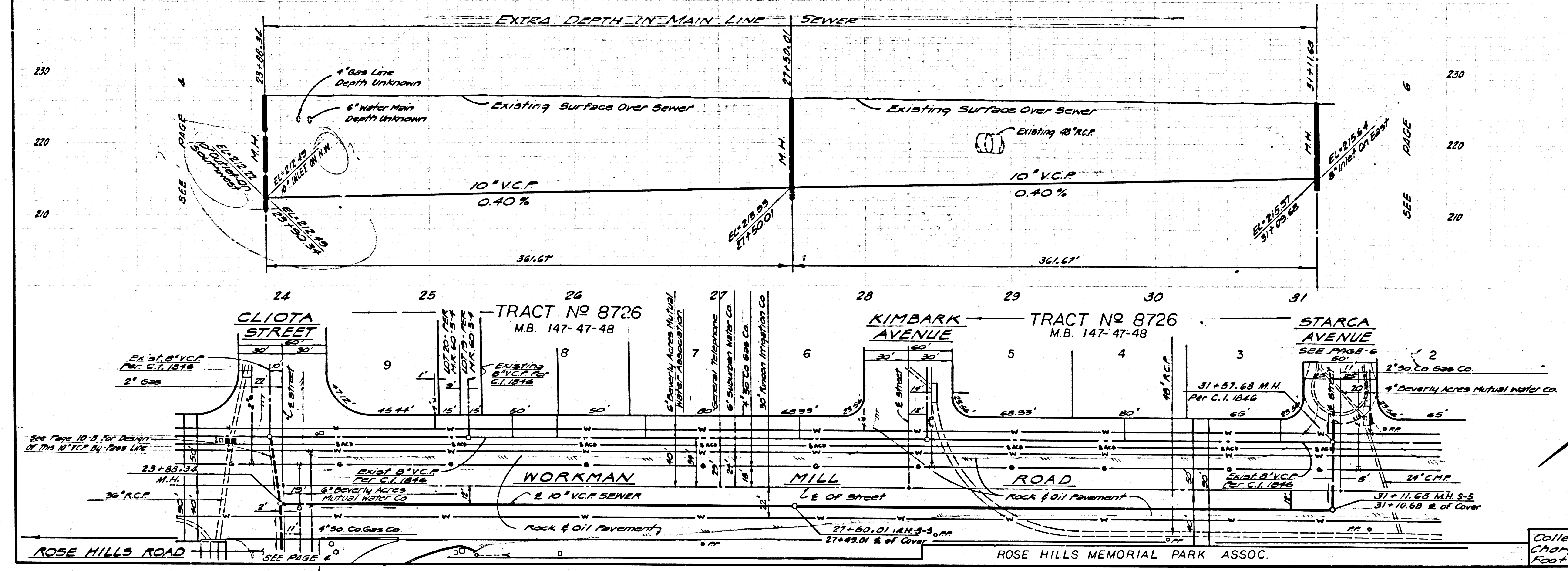


NO CHARGE FOR CONNECTIONS FROM TRUNKLINE AREA WITHIN THE CITY OF INDUSTRY ESTABLISHED TO BE PUBLIC UTILITY AND RESERVED MANUFACTURER'S PROPERTY.



DOUBLE SCALE VERTICAL

COLLECT CHARGES AS INDICATED

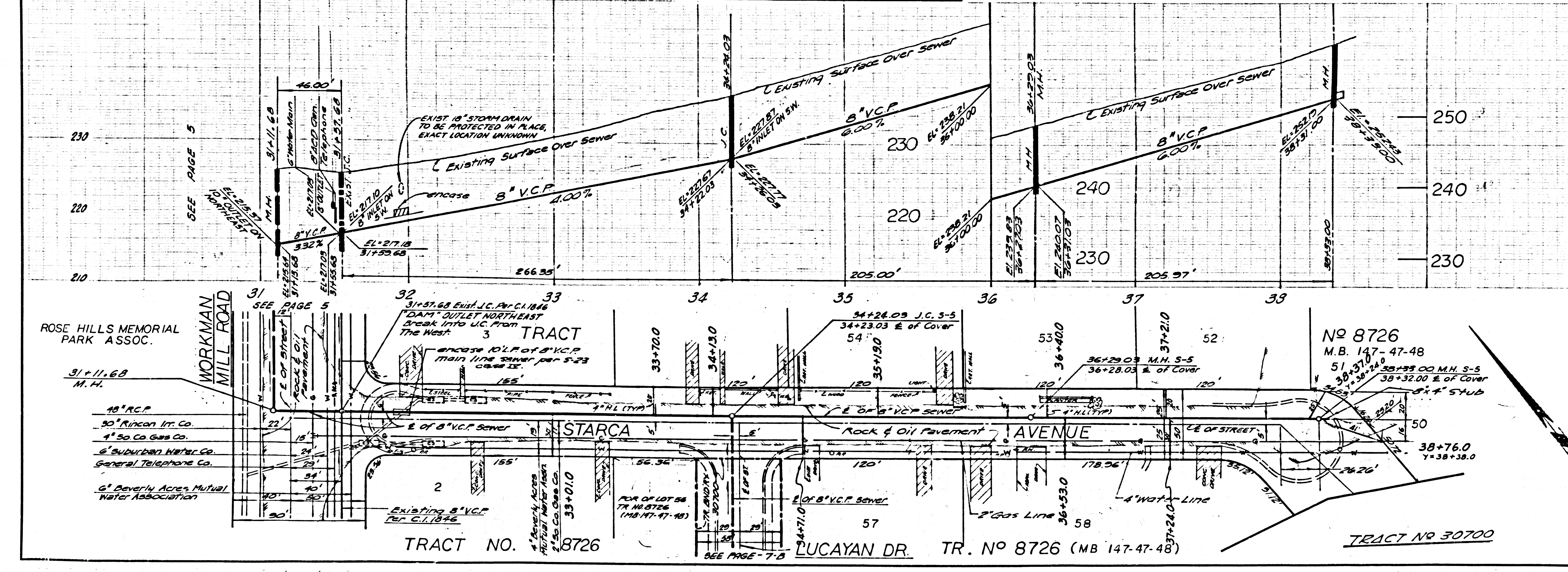


42152

Collect Ordinance Frontage Charge \$3.00 per Front Foot - \$100.00 minimum (County)

DOUBLE SCALE VERTICAL

No Charge For Connections



42153

