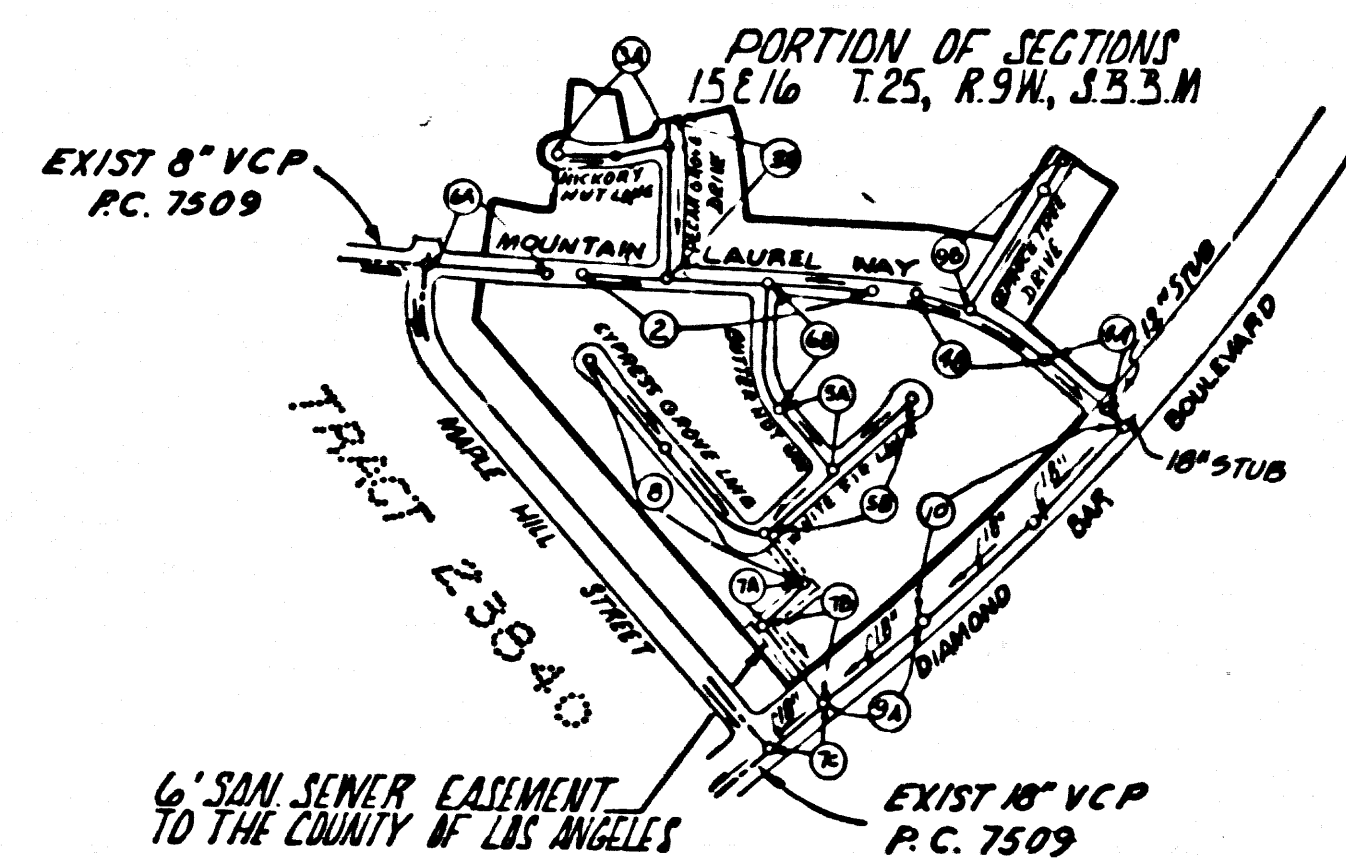


B.M. B.G. 2109 ELEV. 843.521  
 BEGINS AT PARTITIONER ROAD AND DIAMOND BAR  
 BLVD. THENCE 1 MILE NLY ALONG DIAMOND BAR  
 BLVD. TO CONCRETE HEADWALL, P.D.B.M. TAG  
 NEAR CENTER 65 FT. ELY OF E.  
 OTTERBEIN QUAD. 19 65



INDEX MAP  
 TRACT No. 28949  
 P.C. 8254  
 SCALE 1"=600'

PRIVATE ENGINEER'S  
 NOTICE TO CONTRACTOR  
 THE EXISTENCE AND LOCATION OF ANY UNDERGROUND UTILITY PIPES  
 OR STRUCTURES SHOWN ON THESE PLANS ARE OBTAINED BY A SEARCH  
 OF THE AVAILABLE RECORDS TO THE BEST OF OUR KNOWLEDGE THERE  
 ARE NO EXISTING UTILITIES EXCEPT AS SHOWN ON THIS MAP.  
 THE CONTRACTOR IS REQUIRED TO TAKE PRECAUTIONARY MEASURES  
 TO PROTECT THE UTILITY LINES SHOWN AND ANY OTHER LINES NOT  
 RECORDED OR NOT SHOWN ON THIS DRAWING.

NOTE: NUMBERS IN CIRCLES INDICATE PAGE NUMBERS.

ALL FILL TO BE IN PLACE  
 PRIOR TO THE CONSTRUCTION  
 OF THIS SEWER

NOTICE TO CONTRACTOR  
 THE CONTRACTOR SHALL NOTIFY  
 SOUTHERN CALIFORNIA GAS COMP-  
 ANY P. O. BOX 146 BREA CALIFORNIA  
 PHONE 579-2889. 48 HOURS  
 PRIOR TO STARTING ANY WORK  
 IN THE VICINITY OF THE 30" GAS  
 PIPE

COLLECT CHARGES  
 AS INDICATED

DOUBLE SCALE  
 SAN DIMAS BLDG. DIST. NO. 10

PROFILE, ALIGNMENT AND GRADE OF  
 SANITARY SEWERS  
 CONSTRUCTED IN

TRACT No. 28949  
 PRIVATE CONTRACT NO. 8254

W.S. 39  
 5 SHEETS; 10 PAGES  
 SCALE: HORIZ. 1"=80' VERT. 1"=8'  
 FEBRUARY, 1969  
 PREPARED IN THE OFFICES OF  
 ERVIN ENGINEERING  
 729 S. PARK VIEW ST. LOS ANGELES, CALIF. 90037  
 REG. C. E. NO. 11932

- NOTES:
- HOUSE LATERALS TO BE CONSTRUCTED WITH INVERTS AT PROPERTY LINE 6 FEET BELOW CURB GRADE EXCEPT AS NOTED.
  - PROVIDE STAKES ON THE PROPERTY LINE OR PROPERTY LINES PRODUCED AT RIGHT ANGLES TO THE SEWER LINE AT THE CENTER LINE OF EACH MANHOLE.
  - NO REPRESENTATIVE OF THE COUNTY ENGINEER WILL SURVEY OR LAY OUT ANY PORTION OF THE WORK.
  - THE PRIVATE ENGINEER SHALL FURNISH THE COUNTY ENGINEER WITH GRADE SHEETS AND STATIONING FOR ALL HOUSE LATERALS AND "T" OR "TT" BRANCHES AND SHALL PROVIDE STAKES FOR THEM AT THEIR PROPER LOCATIONS WITH STATIONING PLAINLY MARKED. ALL HOUSE LATERALS SHALL BE CONSTRUCTED IN A STRAIGHT ALIGNMENT AT RIGHT ANGLES FROM THE MAIN LINE SEWER EXCEPT AS SHOWN ON THE PLANS. HOUSE LATERALS FROM CHIMNEYS SHALL NOT HAVE AN ANGLE OF LESS THAN 45° WITH THE MAIN LINE SEWER. ANY CHANGE IN ALIGNMENT SHALL BE REQUESTED IN WRITING BY THE PRIVATE ENGINEER.
  - THE PRIVATE ENGINEER SHALL FURNISH THE HOUSE LATERAL DEPTH AT THE PROPERTY LINE BELOW THE TOP OF CURB ELEVATION FOR EACH HOUSE LATERAL ON THE GRADE SHEET.
  - NO REVISIONS SHALL BE MADE IN THESE PLANS WITHOUT THE APPROVAL OF THE COUNTY ENGINEER.
  - THE CONTRACTOR SHALL NOTIFY THE CONSTRUCTION DIVISION BY TELEPHONE, MAINSON 9-4707, EXT. 8158, AT LEAST TWENTY-FOUR HOURS BEFORE STARTING ANY WORK UNDER THIS CONTRACT.
  - ALL STRUCTURES SHALL BE EITHER BRICK MANHOLES PER S-5 OR PRECAST CONCRETE MANHOLES PER S-5 OR S-6, EXCEPT AS NOTED.
  - "T" OR "TT" BRANCHES MAY BE USED FOR CONNECTIONS TO MANHOLE SEWERS EXCEPT AS NOTED.
  - MANHOLE TOPS IN UNIMPROVED PORTS OF WAY TO BE 6 1/2 INCHES ABOVE FINISHED GRADE.
  - USE EXTRA STRENGTH PIPE. ALL PIPE IS STANDARD DEPTH EXCEPT AS NOTED.
  - VITRIFIED CLAY PIPE JOINTS SHALL BE TYPE "B", "T", OR "TT" PER STANDARD SPECIFICATIONS SECTION 306-2.
  - IF A POWER POLE IS WITHIN THREE FEET OF THE SEWER, THE SEWER SHALL BE ENCASED, PER S-23, TWO FEET ON EACH SIDE FROM THE POINT OF INTERFERENCE.
  - IF DURING THE COURSE OF CONSTRUCTION IT IS DETERMINED THAT THERE IS LESS THAN FOUR FEET OF COVER OVER THE TOP OF A MAIN LINE OR HOUSE LATERAL V.C.P. SEWER WHICH IS NOT INDICATED ON THE PLANS, THE PIPE SHALL BE ENCASED PER S-23, UNLESS OTHERWISE APPROVED BY THE COUNTY ENGINEER.
  - RESURFACE ALL TRENCHES WITHIN PAVED AREAS TO MEET L.A. COUNTY ROAD DEPT. OR CALIFORNIA STATE HIGHWAY REQUIREMENTS IN ACCORDANCE WITH PERMITS.
  - SEWERS TO BE TESTED FOR LEAKAGE PER SECTION 306-2.3.7 OF THE STANDARD SPECIFICATIONS, REGARDING SAFETY ORDERS.
  - REFER TO SECTION 7-18.4.1 OF THE STANDARD SPECIFICATIONS, REGARDING SAFETY ORDERS.
  - ALL JOINTS BETWEEN CAST IRON PIPE AND VITRIFIED CLAY PIPE SHALL BE MADE WITH A RUBBER SLEEVE JOINT, TYPE "C" OR "TT", WITH WASHING IF NECESSARY PER STANDARD SPECIFICATIONS, SECTION 306-2.

THE FOLLOWING LATEST REVISED STANDARD PLANS ON FILE IN THE OFFICE OF THE COUNTY ENGINEER SHALL APPLY IN THE CONSTRUCTION OF THIS PROJECT:

LEACH	.....	S-1
MINIMUM PUBLIC SAFETY REQUIREMENTS	.....	S-2
BRICK MANHOLE	.....	S-3
NON-BEHNDORF PRECAST CONCRETE MANHOLE	.....	S-4
BEHDORF PRECAST CONCRETE MANHOLE	.....	S-5
MANHOLE FRAME AND COVER	.....	S-6
STANDARD MANHOLE STEP	.....	S-7
RECORDS FOR SEWER PIPE	.....	S-8
CRADLING AND ENCASEMENT	.....	S-9
WY ON THE SUPPORT	.....	S-10
ALLOWABLE TRENCH WIDTHS	.....	S-11

County Sanitation Districts shall be notified just prior to the following so that required inspection can be made (Phone 337-1023 - - 800-6099)

Acceptance of the project.

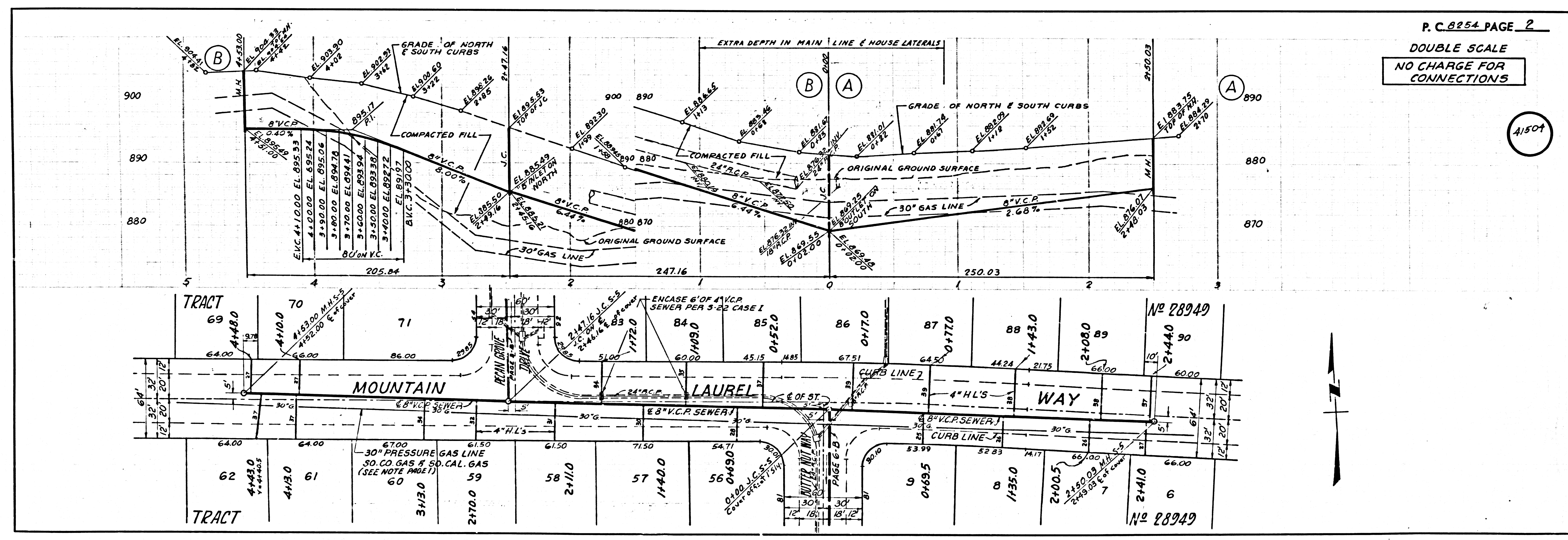
No connections for the disposal of industrial wastes shall be made to sewers shown on these drawings without written permission from the Chief Engineer and General Manager of the County Sanitation Districts.

NOTE:  
 GRADES TO WHICH THIS IMPROVEMENT IS TO BE CONSTRUCTED ARE SHOWN ON PLANS AND PROFILES. GRADE POINTS FOR TOP OF CURB, CENTER LINE OF STREETS, OR CENTER LINE OF ALLEYS ARE SHOWN BY CIRCLES ON PROFILES. AT ALL POINTS BETWEEN DESIGNATED POINTS THE GRADE SHALL BE ESTABLISHED SO AS TO CONFORM TO A STRAIGHT LINE DRAWN BETWEEN SAID DESIGNATED POINTS. ELEVATIONS ARE IN FEET ABOVE M.S.L. & S.F. SEA LEVEL DATUM OF 1929.  
 WORK SHALL BE CONSTRUCTED ACCORDING TO THE STANDARD SPECIFICATIONS FOR PUBLIC WORKS CONSTRUCTION AND SPECIAL PROVISIONS FOR THE CONSTRUCTION OF SANITARY SEWERS DATED JAN. 2, 1968 AS REVISED, AND SHALL BE PROSECUTED ONLY IN THE PRESENCE OF THE COUNTY ENGINEER.  
 BEFORE WORK CAN BE STARTED, THE CONTRACTOR MUST OBTAIN A PERMIT TO EXCAVATE IN COUNTY STREETS FROM THE L.A. COUNTY ROAD DEPT., DISTRICT OFFICE NO. 1, AND PAY A FEE TO THE COUNTY ENGINEER, ROOM 308, COUNTY ENGINEERING BUILDING, 100 WEST BROAD STREET OR 801 S. GRAY ST., ANAHEIM, CALIF. DISTRICT OFFICE, SUBJECT TO COVER THE COST OF CONSTRUCTION INSPECTION AND RECORD PLANS.  
 APPROVAL OF THIS PLAN BY THE COUNTY OF LOS ANGELES DOES NOT CONSTITUTE A REPRESENTATION AS TO THE ACCURACY OF THE LOCATION OR OF THE EXISTENCE OR NON-EXISTENCE OF ANY UNDERGROUND UTILITY PIPE, OR STRUCTURE WITHIN THE LIMITS OF THIS PROJECT. THIS NOTE APPLIES TO ALL PAGES.  
 IF WORK IS TO BE DONE IN A STATE HIGHWAY, A PERMIT MUST BE OBTAINED FROM THE STATE OF CALIFORNIA, DIVISION OF HIGHWAYS, 120 SOUTH SPRING STREET, LOS ANGELES, CALIFORNIA.

COUNTY OF LOS ANGELES, CALIFORNIA  
 JOHN A. LAMBIE, COUNTY ENGINEER  
 J. D. PARKHURST, CHIEF ENGINEER

APPROVED BY: *[Signature]* APPROVED BY: *[Signature]*  
 JAW DAVIS REGIONAL ENGINEER DISTRICT OFFICE ENGINEER

CHECKED BY: *[Signature]*  
 REG. C.E. NO. 14443



P.C. 8254 PAGE 2  
 DOUBLE SCALE  
 NO CHARGE FOR CONNECTIONS

