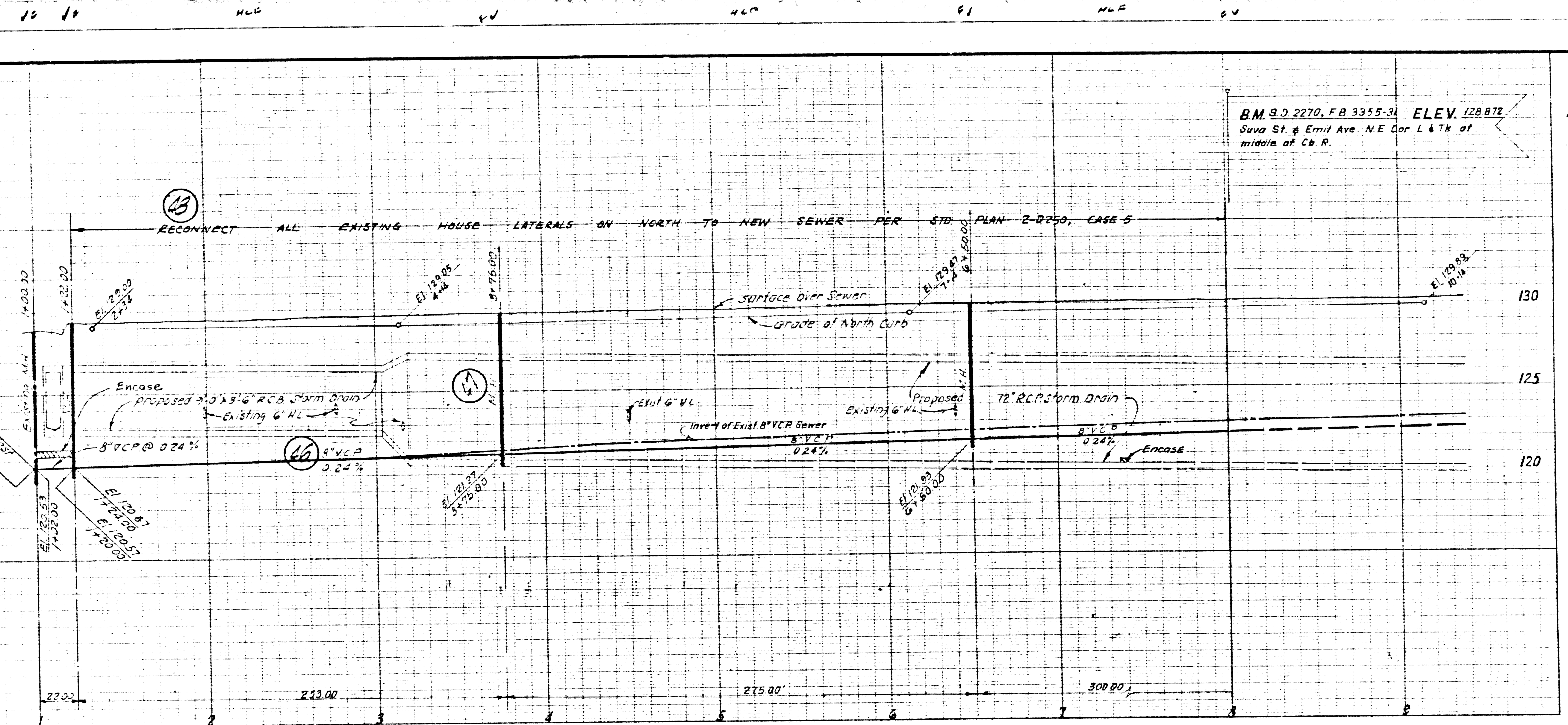


SCALE  
 Horiz 1" = 40'  
 Vert 1" = 4'

130  
 125  
 120

BM 9.0 2270, FB 3355-3 ELEV. 128.872  
 Suva St. & Emil Ave. NE Cor. L & 1/4 of  
 middle of Co. R.



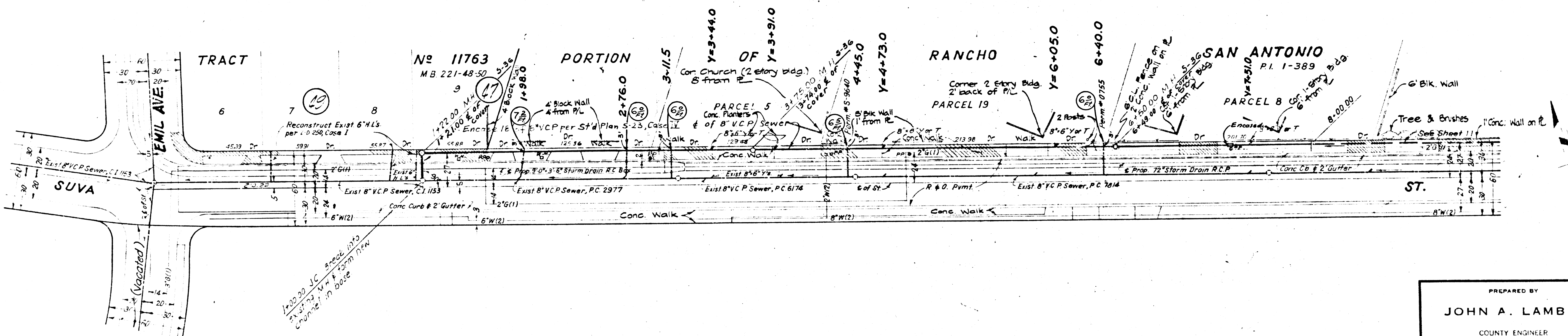
- GENERAL SEWER NOTES**
- JANITARY SEWERS SHALL BE CONSTRUCTED IN ACCORDANCE WITH THE STANDARD SPECIFICATIONS FOR PUBLIC WORKS CONSTRUCTION (HEREINAFTER REFERRED TO AS THE STANDARD SPECIFICATIONS), SPECIAL PROVISIONS AND STANDARD PLANS ON FILE IN THE OFFICE OF THE COUNTY ENGINEER, SANITATION DIVISION.
  - VITRIFIED CLAY PIPE JOINTS SHALL BE TYPE 'D', 'R' 'S', PER SECTION 208-2 OF STANDARD SPECIFICATIONS.
  - 'T' OR 'Y' BRANCHES MAY BE USED FOR CONNECTION TO MAIN LINE SEWERS.
  - SEWER PIPE AND APPURTENANCES SHALL BE ABANDONED IN ACCORDANCE WITH SECTION 306-3 OF STANDARD SPECIFICATIONS.
  - EXISTING SEWER SERVICES AND FLOW SHALL BE MAINTAINED AT ALL TIMES.
  - THE CONTRACTOR SHALL NOTIFY THE CONSTRUCTION DIVISION OF THE COUNTY ENGINEER BY TELEPHONE 628-4767, EXT 91551, AT LEAST TWENTY-FOUR HOURS BEFORE STARTING ANY WORK UNDER THIS PROJECT.
  - THE FOLLOWING LATEST REVISED STANDARD PLANS SHALL APPLY IN THE CONSTRUCTION OF THIS PROJECT: S-3, S-10, S-17, S-21, S-23, S-26 & S-33.

County Sanitation Districts shall be notified prior to the following no later than 10:00 AM on the date shown.

A duplicate of the project.

No connections for the disposal of industrial waste shall be made to any sewer line under construction unless approved by the County Engineer and the Sanitation Districts.

CITY OF BELL GARDENS



42693

1958 STORM DRAIN BOND ISSUE  
 LOS ANGELES COUNTY  
 FLOOD CONTROL DISTRICT

SUVA STREET  
 PROJECT NO. 695  
 (SUPPLEMENTAL)  
 SANITARY SEWER RECONSTRUCTION

REVISIONS		
MARK	DATE	DESCRIPTION

The underground utility Companies are follows:  
 (1) Southern California Gas Co.  
 (2) Park Water Co.  
 (3) Power Lines - 600 GP. Edison Co.  
 (4) Sewers - County of Los Angeles

APPROVED  
**JOHN D. PARKHURST**  
 CHIEF ENGINEER  
 CO SAN DIST NO 1

PREPARED BY  
**JOHN A. LAMBIE**  
 COUNTY ENGINEER

**C.C. 8259**  
 recommended by  
*Amelia S. H. C. N.*  
 ASST COUNTY ENGINEER, SANITATION DIVISION

DRAWN BY: *SHERYL DAVIS*  
 CHECKED BY: *JOHN A. LAMBIE*  
 DATE: *3/12/69*

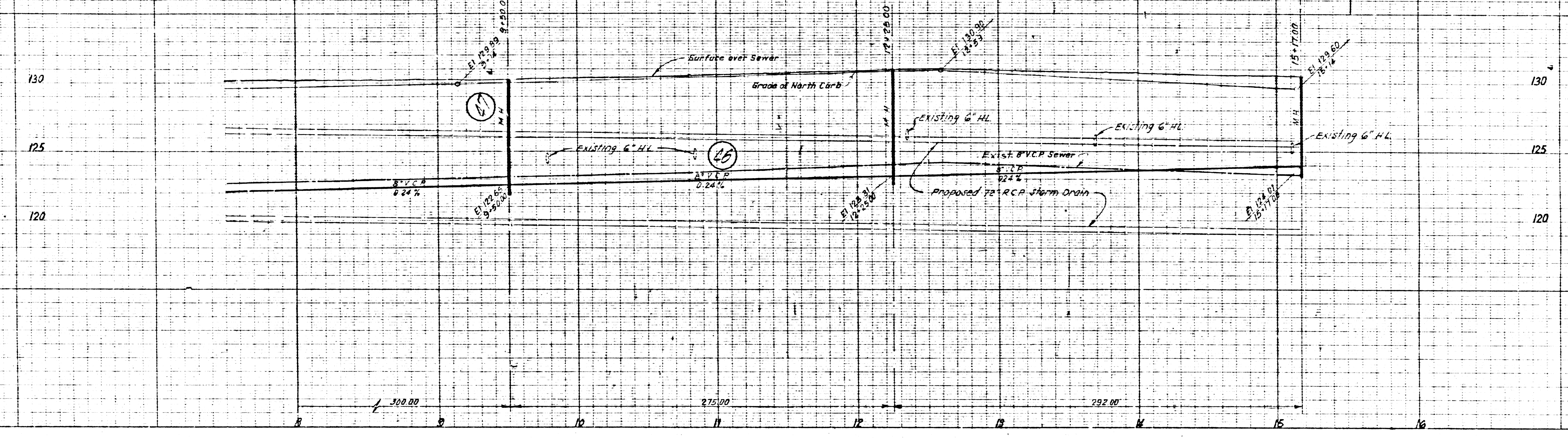
RECOMMENDED BY: *Amelia S. H. C. N.*  
 APPROVED BY: *John A. Lambie*  
 DATE: *1/27/69*

SCALE: \_\_\_\_\_ DATE: *Jan. 71* DWG. NO. *275-695-D-710*  
 SHEET 10 OF 13

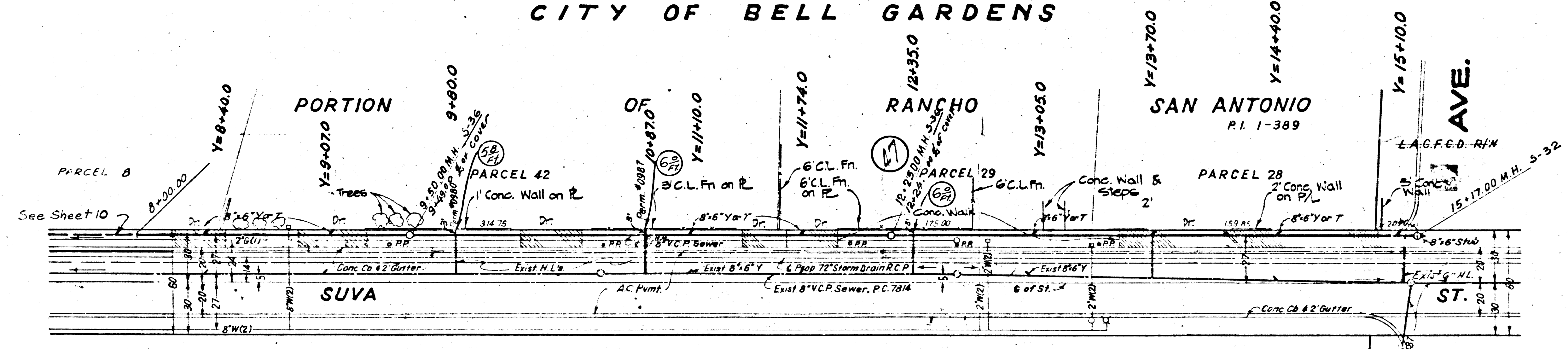
SCALE  
HORIZ. 1"=40'  
VERT. 1"=4'

B.M. S.D. 2270, F.A. 3355-31 ELEV. 128.872  
Curve of 4.4111 Ave. N.E. Cor. L & R. of  
middle of C.R. 2

RECONNECT ALL EXISTING HOUSE LATERALS ON NORTH TO NEW SEWER PER STANDARD DWG. 2-D-250 CASE 5



CITY OF BELL GARDENS



42694

19.58 STORM DRAIN BOND ISSUE  
LOS ANGELES COUNTY  
FLOOD CONTROL DISTRICT

PREPARED BY  
**JOHN A. LAMBIE**  
COUNTY ENGINEER

SUVA STREET  
PROJECT NO. 695  
(SUPPLEMENTAL)  
SANITARY SEWER RECONSTRUCTION

APPROVED  
**JOHN D. PARKHURST**  
CHIEF ENGINEER  
C.C. SAN DIST. NO. 1

Recommended by  
**C.C. 8259**  
COUNTY ENGINEER

RECOMMENDED BY [Signature]  
APPROVED BY [Signature]  
DATE JUN 71  
DWG. NO. 275-695-D 7.11  
SHEET 11 OF 13

The underground utility Companies are as follows:  
(1) Southern California Gas Co.  
(2) Park Water Co.

REVISIONS			
NO.	MARK	DATE	DESCRIPTION