

B.M. BY 5333 ELEV. 1042.493
 8' x 5" tag ctr. hole over drain pipe
 of cur. 18" dia. approx. 4' int. dia.
 Topanga Canyon Rd and Mulholland
 Hwy. 2 1/2 mi. S. post (408 + 58)
 MALIBU QUAD. 1965

THE FOLLOWING LATEST REVISED STANDARD PLANS ON FILE IN THE OFFICE OF THE COUNTY ENGINEER SHALL BE IN THE POSSESSION OF THE CONTRACTOR AT THE COMMENCEMENT OF THIS PROJECT.

MANHOLE	5-1
MANHOLE FRAMES AND COVERS	5-2
BRICK MANHOLE	5-3
MANHOLE FRAMES AND COVERS	5-4
MANHOLE FRAMES AND COVERS	5-5
MANHOLE FRAMES AND COVERS	5-6
MANHOLE FRAMES AND COVERS	5-7
MANHOLE FRAMES AND COVERS	5-8
MANHOLE FRAMES AND COVERS	5-9
MANHOLE FRAMES AND COVERS	5-10
MANHOLE FRAMES AND COVERS	5-11
MANHOLE FRAMES AND COVERS	5-12
MANHOLE FRAMES AND COVERS	5-13
MANHOLE FRAMES AND COVERS	5-14
MANHOLE FRAMES AND COVERS	5-15
MANHOLE FRAMES AND COVERS	5-16
MANHOLE FRAMES AND COVERS	5-17
MANHOLE FRAMES AND COVERS	5-18
MANHOLE FRAMES AND COVERS	5-19
MANHOLE FRAMES AND COVERS	5-20
MANHOLE FRAMES AND COVERS	5-21
MANHOLE FRAMES AND COVERS	5-22
MANHOLE FRAMES AND COVERS	5-23
MANHOLE FRAMES AND COVERS	5-24
MANHOLE FRAMES AND COVERS	5-25
MANHOLE FRAMES AND COVERS	5-26
MANHOLE FRAMES AND COVERS	5-27
MANHOLE FRAMES AND COVERS	5-28
MANHOLE FRAMES AND COVERS	5-29
MANHOLE FRAMES AND COVERS	5-30
MANHOLE FRAMES AND COVERS	5-31
MANHOLE FRAMES AND COVERS	5-32
MANHOLE FRAMES AND COVERS	5-33
MANHOLE FRAMES AND COVERS	5-34
MANHOLE FRAMES AND COVERS	5-35
MANHOLE FRAMES AND COVERS	5-36
MANHOLE FRAMES AND COVERS	5-37
MANHOLE FRAMES AND COVERS	5-38
MANHOLE FRAMES AND COVERS	5-39
MANHOLE FRAMES AND COVERS	5-40
MANHOLE FRAMES AND COVERS	5-41
MANHOLE FRAMES AND COVERS	5-42
MANHOLE FRAMES AND COVERS	5-43
MANHOLE FRAMES AND COVERS	5-44
MANHOLE FRAMES AND COVERS	5-45
MANHOLE FRAMES AND COVERS	5-46
MANHOLE FRAMES AND COVERS	5-47
MANHOLE FRAMES AND COVERS	5-48
MANHOLE FRAMES AND COVERS	5-49
MANHOLE FRAMES AND COVERS	5-50
MANHOLE FRAMES AND COVERS	5-51
MANHOLE FRAMES AND COVERS	5-52
MANHOLE FRAMES AND COVERS	5-53
MANHOLE FRAMES AND COVERS	5-54
MANHOLE FRAMES AND COVERS	5-55
MANHOLE FRAMES AND COVERS	5-56
MANHOLE FRAMES AND COVERS	5-57
MANHOLE FRAMES AND COVERS	5-58
MANHOLE FRAMES AND COVERS	5-59
MANHOLE FRAMES AND COVERS	5-60
MANHOLE FRAMES AND COVERS	5-61
MANHOLE FRAMES AND COVERS	5-62
MANHOLE FRAMES AND COVERS	5-63
MANHOLE FRAMES AND COVERS	5-64
MANHOLE FRAMES AND COVERS	5-65
MANHOLE FRAMES AND COVERS	5-66
MANHOLE FRAMES AND COVERS	5-67
MANHOLE FRAMES AND COVERS	5-68
MANHOLE FRAMES AND COVERS	5-69
MANHOLE FRAMES AND COVERS	5-70
MANHOLE FRAMES AND COVERS	5-71
MANHOLE FRAMES AND COVERS	5-72
MANHOLE FRAMES AND COVERS	5-73
MANHOLE FRAMES AND COVERS	5-74
MANHOLE FRAMES AND COVERS	5-75
MANHOLE FRAMES AND COVERS	5-76
MANHOLE FRAMES AND COVERS	5-77
MANHOLE FRAMES AND COVERS	5-78
MANHOLE FRAMES AND COVERS	5-79
MANHOLE FRAMES AND COVERS	5-80
MANHOLE FRAMES AND COVERS	5-81
MANHOLE FRAMES AND COVERS	5-82
MANHOLE FRAMES AND COVERS	5-83
MANHOLE FRAMES AND COVERS	5-84
MANHOLE FRAMES AND COVERS	5-85
MANHOLE FRAMES AND COVERS	5-86
MANHOLE FRAMES AND COVERS	5-87
MANHOLE FRAMES AND COVERS	5-88
MANHOLE FRAMES AND COVERS	5-89
MANHOLE FRAMES AND COVERS	5-90
MANHOLE FRAMES AND COVERS	5-91
MANHOLE FRAMES AND COVERS	5-92
MANHOLE FRAMES AND COVERS	5-93
MANHOLE FRAMES AND COVERS	5-94
MANHOLE FRAMES AND COVERS	5-95
MANHOLE FRAMES AND COVERS	5-96
MANHOLE FRAMES AND COVERS	5-97
MANHOLE FRAMES AND COVERS	5-98
MANHOLE FRAMES AND COVERS	5-99
MANHOLE FRAMES AND COVERS	5-100

CALABASAS BLDG. DIST. NO. 91

PROFILE ALIGNMENT AND GRADE OF P.C. 8263
 SANITARY SEWERS PAGE 1
 TO BE CONSTRUCTED IN

MEADOWLARK DRIVE 41072

PRIVATE CONTRACT NO. 8263

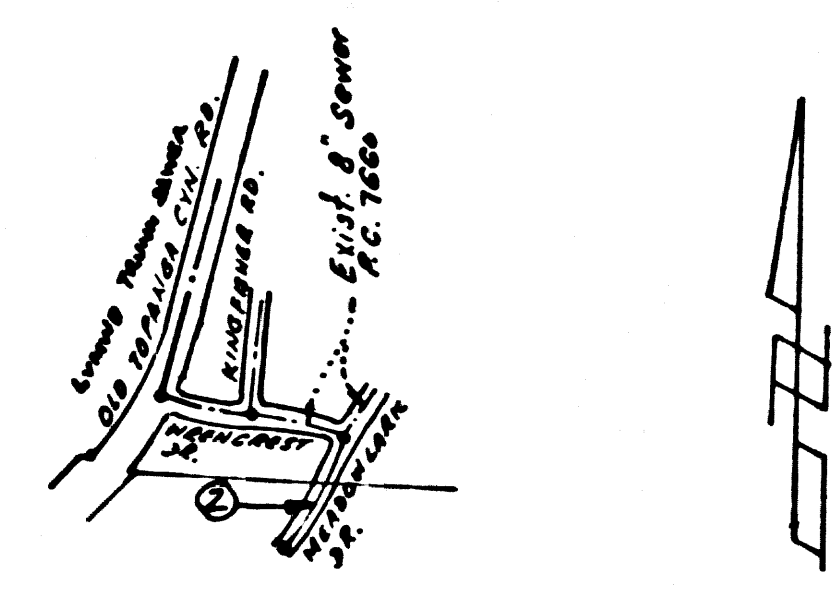
W.S. 60
 1 SHEETS, 2 PAGES

SCALE: VERT. 1" = 4' HORIZ. 1" = 40' MARCH, 1969

PREPARED IN THE OFFICES OF
 RICHARDS - SWARTZWELDER CONST. CO.

By Lee Richards
 REG. C. E. NO. 16717

FOR LEGEND SEE PLAN NO. S-1



KEY MAP
 P.C. 8263
 SCALE 1" = 400'

- NOTES:
- PROVIDE STAKES ON THE PROPERTY LINE OR PROPERTY LINES PRODUCED AT RIGHT ANGLES TO THE SEWER LINE AT THE CENTER LINE OF EACH MANHOLE.
 - NO REPRESENTATIVE OF THE COUNTY ENGINEER WILL SURVEY OR LAY OUT ANY PORTION OF THE WORK.
 - THE PRIVATE ENGINEER SHALL FURNISH THE COUNTY ENGINEER WITH GRADE SHEETS AND STATIONING FOR ALL HOUSE LATERALS "T" OR "T" BRANCHES AND SHALL PROVIDE STAKES FOR THEM AT THEIR PROPER LOCATIONS WITH STATIONING PLAINLY MARKED. ALL HOUSE LATERALS SHALL BE CONSTRUCTED IN A STRAIGHT ALIGNMENT AT RIGHT ANGLES FROM THE MAIN LINE SEWER EXCEPT AS SHOWN ON THE PLANS. HOUSE LATERALS FROM CHIMNEYS SHALL NOT HAVE AN ANGLE OF LESS THAN 45° WITH THE MAIN LINE SEWER. ANY CHANGE IN ALIGNMENT SHALL BE REQUESTED IN WRITING BY THE PRIVATE ENGINEER.
 - THE PRIVATE ENGINEER SHALL FURNISH THE HOUSE LATERAL DEPTH AT THE PROPERTY LINE BELOW THE TOP OF CURB ELEVATION FOR EACH HOUSE LATERAL ON THE GRADE SHEET.
 - NO REVISIONS SHALL BE MADE IN THESE PLANS WITHOUT THE APPROVAL OF THE COUNTY ENGINEER.
 - THE CONTRACTOR SHALL NOTIFY THE CONSTRUCTION DIVISION BY TELEPHONE, MADISON 9-4700, EXT. 8158, AT LEAST TWENTY-FOUR HOURS BEFORE STARTING ANY WORK UNDER THIS CONTRACT.
 - MANHOLES SHALL BE BRICK DRIVE STRUCTURES PER S.S. PRECAST CONCRETE MANHOLES PER S-5 OR S-6 MAY BE USED AS AN ALTERNATE IN LOCATIONS APPROVED BY THE COUNTY ENGINEER.
 - USE STANDARD MANHOLE FRAMES AND COVERS, S-15, EXCEPT AS NOTED.
 - MANHOLE TOPS IN UNIMPROVED RIGHTS-OF-WAY TO BE SIX INCHES ABOVE FINISHED GRADE.
 - USE EXTRA STRENGTH PIPE. ALL PIPE IS STANDARD DEPTH EXCEPT AS NOTED.
 - USE ABSORBERICAL COMPRESSION JOINTS PER S.S. PRECAST CONCRETE MANHOLES PER S-5 OR S-6.
 - IF A POWER HOLE IS WITHIN THREE FEET OF THE SEWER, THE SEWER SHALL BE ENCASED, PER S-23, TWO FEET ON EACH SIDE FROM THE POINT OF INTERFERENCE.
 - IF DURING THE COURSE OF CONSTRUCTION IT IS DETERMINED THAT THERE IS LESS THAN FOUR FEET OF COVER OVER THE TOP OF A MAIN LINE OR HOUSE LATERAL V.C.P. SEWER WHICH IS NOT INDICATED ON THE PLANS, THE PIPE SHALL BE ENCASED PER S-23, UNLESS OTHERWISE APPROVED BY THE COUNTY ENGINEER.
 - HOUSE LATERALS TO BE CONSTRUCTED AT 1/8" PER FOOT TO PROPERTY LINE.
 - RESURFACE ALL TRENCHES WITHIN PAVED AREAS TO MEET L.A. COUNTY ROAD DEPT. OR CALIFORNIA STATE HIGHWAY REQUIREMENTS IN ACCORDANCE WITH PERMITS.
 - VERTICAL CLEARANCE SHALL BE 7'6" "T", "T", OR "T" PER STANDARD SPECIFICATIONS SECTION 208.3.
 - SEWER TO BE SET BY AIR PRESSURE METHOD PER S.C.C. 304.8.3.7.2. UNLESS OTHERWISE INDICATED.
 - DEPTH TO SECTION 210.4.1 OF THE STANDARD SPECIFICATIONS REGARDING EIGHTY FEET.
 - ALL JOINTS BETWEEN CAST IRON PIPE AND VITRIFIED CLAY PIPE SHALL BE MADE WITH A SUBMERGIBLE JOINT, THE "C" OR "V".

NOTICE TO CONTRACTOR
 The existence and location of any underground utility pipes or structures shown on these plans are obtained by a search of the available records. To the best of my knowledge there are no existing utilities except as shown on these plans. The contractor is required to take due precautionary measures to protect the utility lines shown and any other lines not of record or not shown on these plans.
Lee Richards
 REG. C. E. NO. 16717

COLLECT CHARGES AS INDICATED

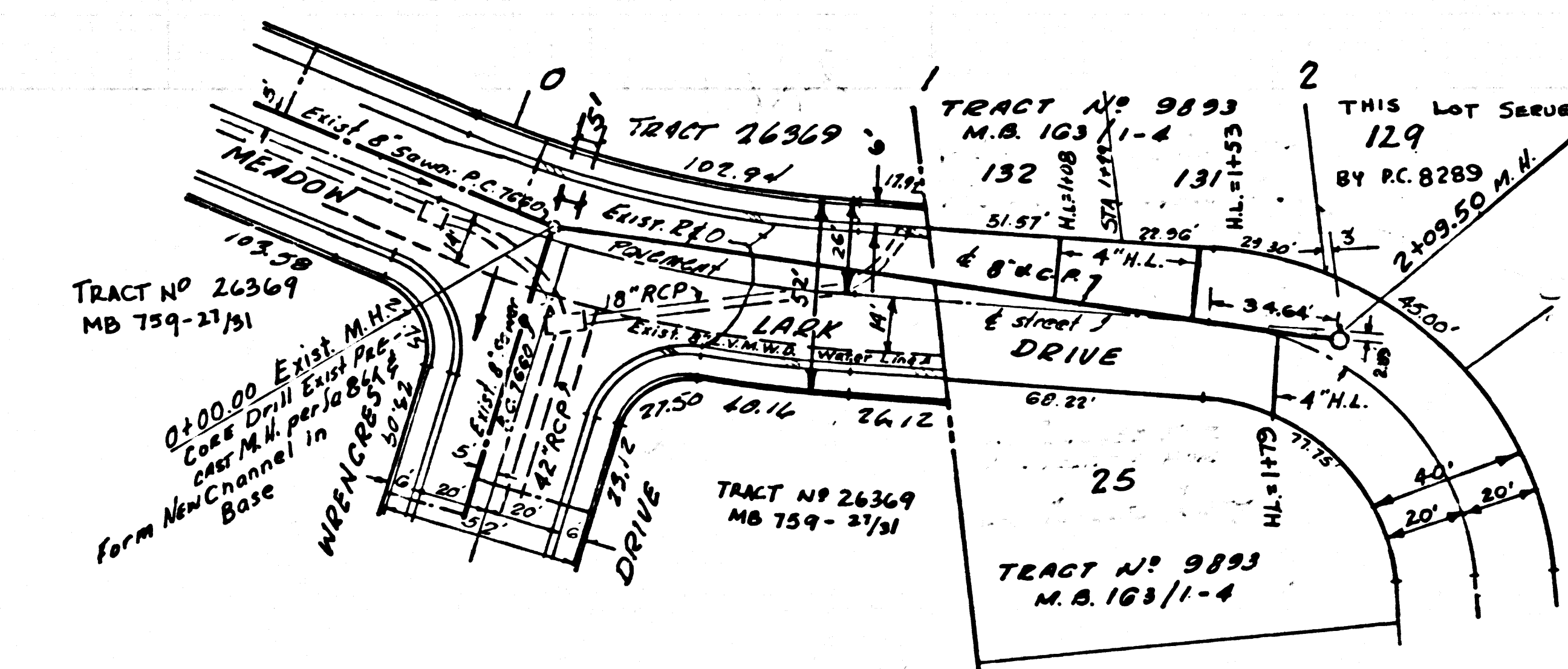
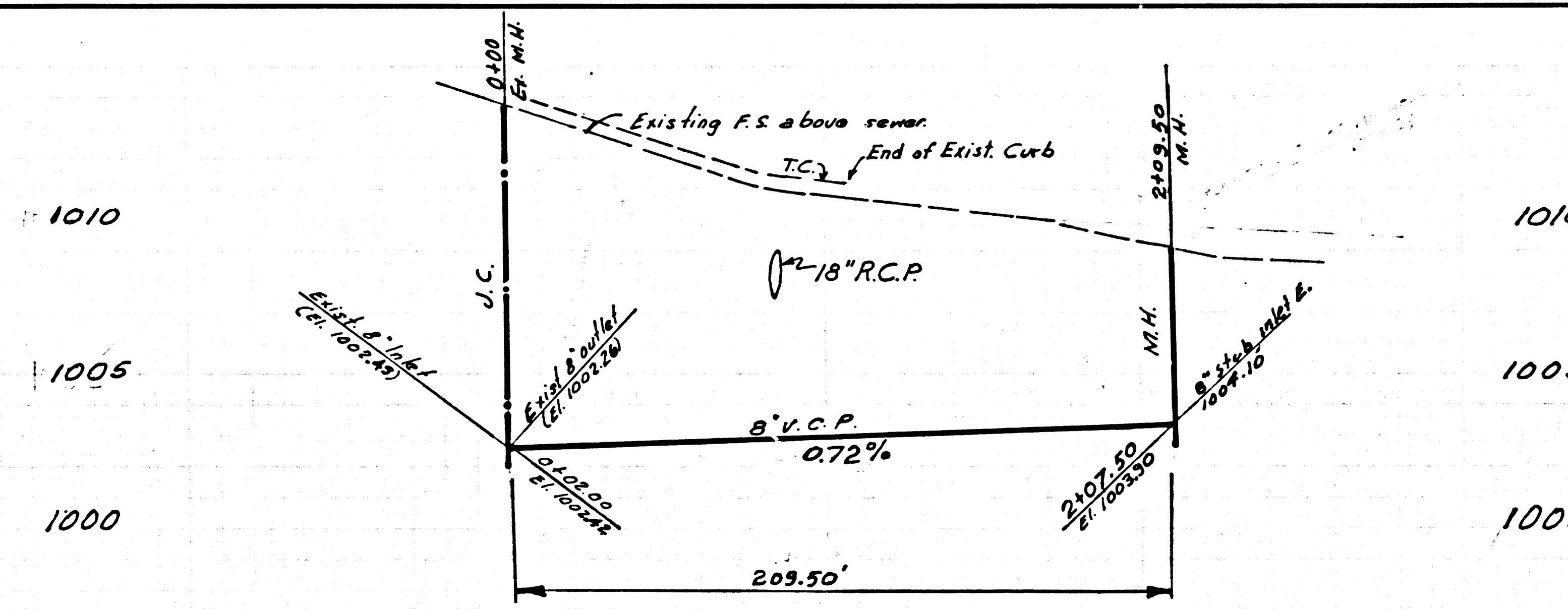
REVISION NO. 1 JUNE 11, 1969
 Revised rate of grade on main line sewer raised Elev. of outlet at M.H.
 Added inlet to M.H.
 Length of Manhole changed per Field Measurement
 Approved Lee Richards
 Office of County Engineer R.E. # 10086

COUNTY OF LOS ANGELES, CALIFORNIA
 JOHN A. LAMBIE, COUNTY ENGINEER L.A. VIRGINES MUNICIPAL WATER DIST.

APPROVED BY Lee Richards
 REGIONAL ENGINEER

CHECKED BY Lee Richards
 REG. C. E. NO. 16717

J.N. 0369.65



P.C. 8263 PAGE 2

SEE L.V.M.W.D. FOR CONNECTION CHARGES

COLLECT NO CHARGES FOR L.A. COUNTY

41073